

W Mills St
Columbus, NC 28722

BUILD TO SUIT

LEASE COST TO BE DETERMINED
BASED ON TENANT SPECS

LAND FOR DEVELOPMENT

Aerial - Site View



Approximately 1/2 acre available for
Build to Suit

Lot adjacent to Tractor Supply parking lot
and behind Dollar General

Convenient location with great visibility from
West Mills Street and Shuford Road

Easily accessible from State Route 26

Population Density Shading



Population Density

By Blockgroups



Demographic Data

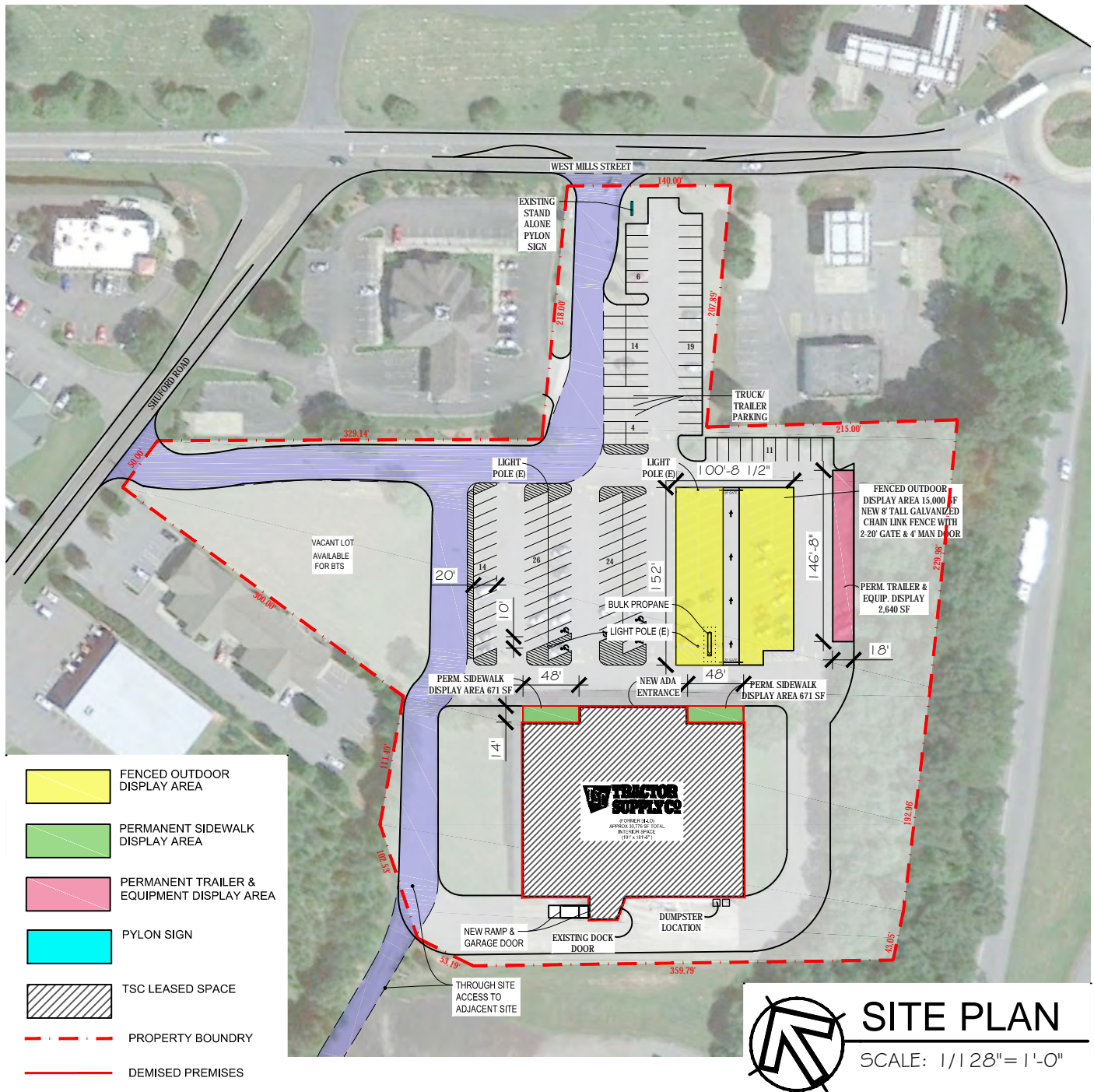
	1 mi radius	3 mi radius	5 mi radius
Population (2019)	1,423	6,071	12,792
Households (2019)	705	3,049	6,232
Median household income (2019)	\$51,465	\$51,777	\$54,504
Total Employees	2,032	4,086	6,004
Total Establishments	198	498	819

COCCA DEVELOPMENT, LTD

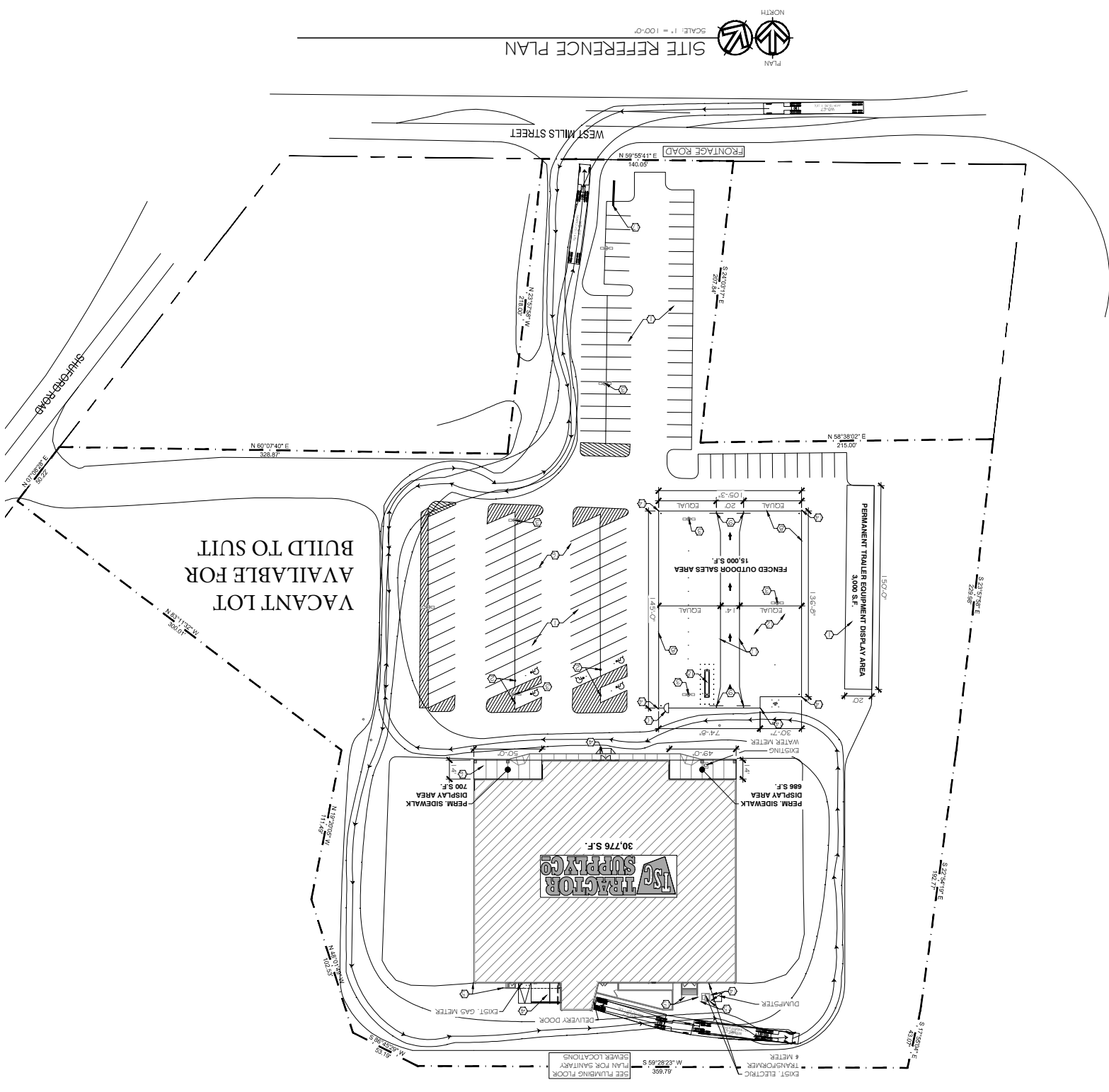
100 DEBARTOLO PLACE SUITE 400 BOARDMAN, OHIO 44512
(330) 729-1010

WWW.COCCADEVELOPMENT.COM

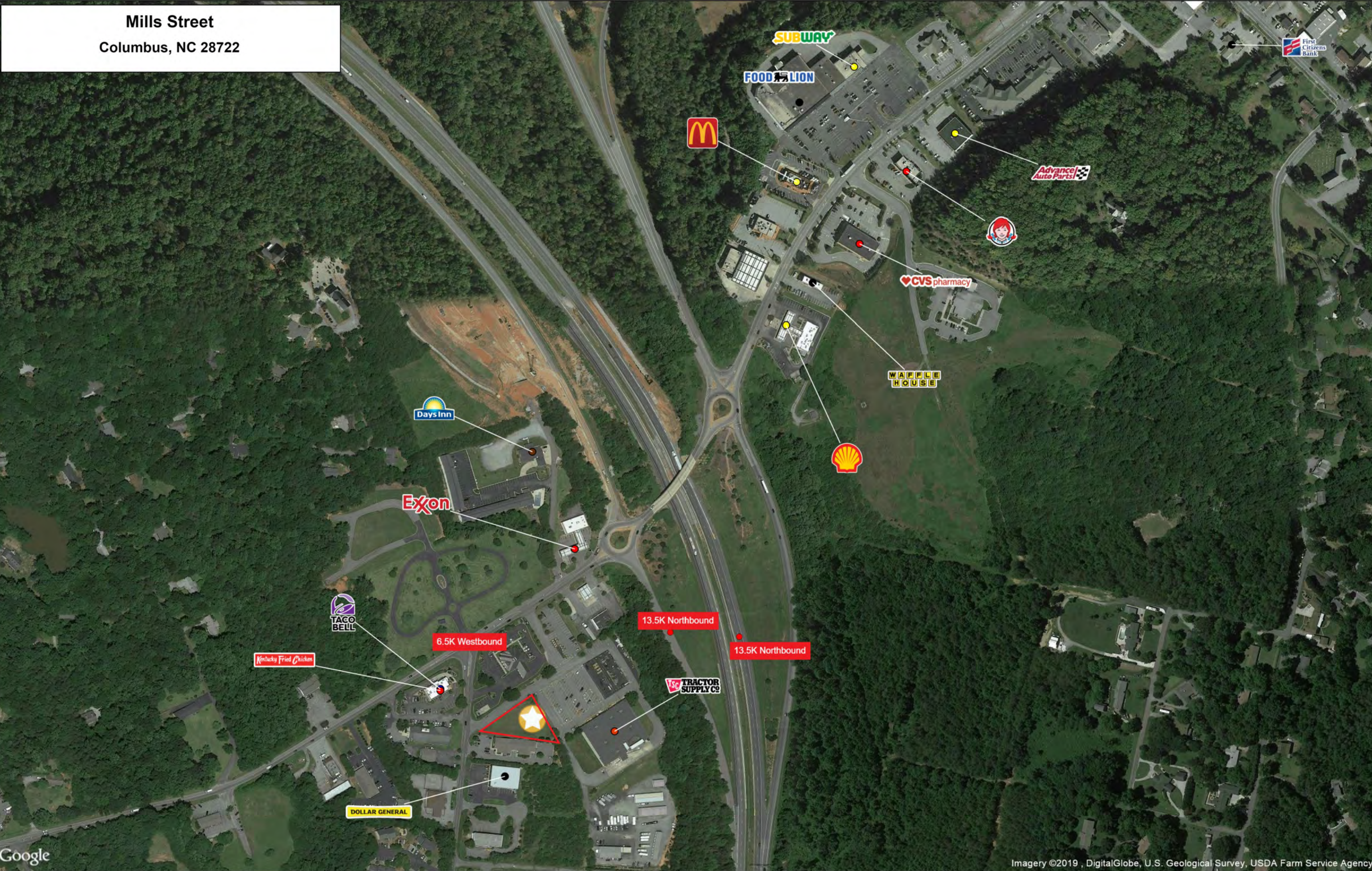
This map was produced using data from private and government sources deemed to be reliable. The information herein is provided without representation or warranty.



COLOR CODED SITE PLAN		SITE LOCATION: 651 WEST MILLS STREET COLUMBUS, NORTH CAROLINA 28722	
TENANT: TRACTOR SUPPLY CO.	DEVELOPER	DESIGNER	DATE:
TSC BLDG AREA: 30,584 SF	COMPANY: COCCA DEVELOPMENT	COMPANY: COCCA DEVELOPMENT	7-14-17
FENCED AREA SIZE: 15,000 SF	NAME: ANTHONY COCCA	NAME: KELLI CHOVAN	7-18-17
TRAILER DISPLAY: 2,640 SF	PHONE #: 330-729-1010	PHONE #: 330-729-1010	9-5-17
SIDEWALK DISPLAY: 644 SF	TSC- S.F. AREA		9-14-17
ACREAGE: 6.10 ACRES			9-15-17
PARKING SPACES (CARS): 118			
PARKING SPACES (W/ TRAILER): 3			
	SALES AREA	20,114 S.F.	
	RECEIVING / STOCK	5,990 S.F.	
	CORE AREA *	1,400 S.F.	
	UN-USED AREA **	3,272 S.F.	
	GROSS SQUARE FOOTAGE:	30,776 S.F.	



Mills Street
Columbus, NC 28722



Google

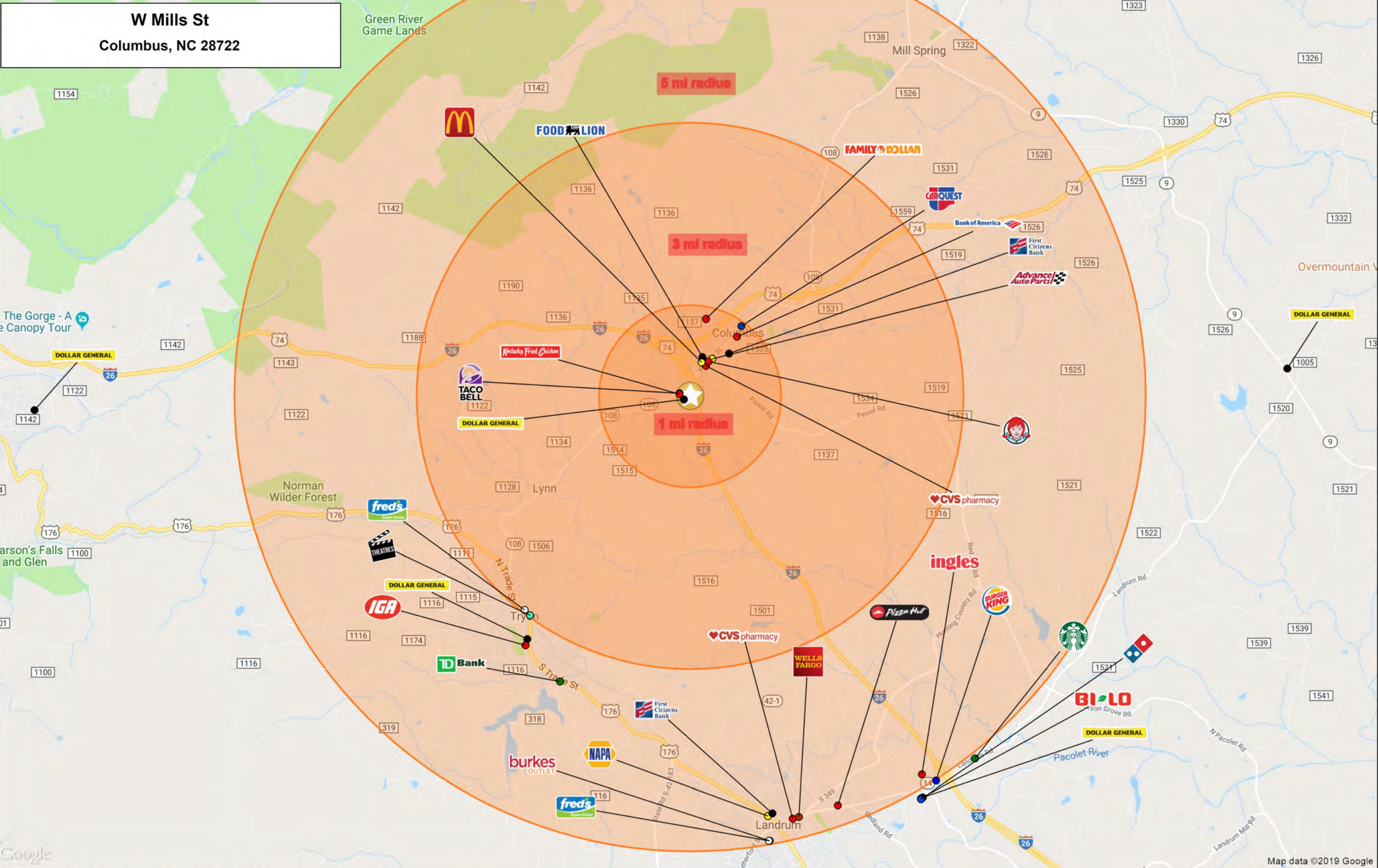
This map was produced using data from private and government sources deemed to be reliable. The information herein is provided without representation or warranty

Imagery ©2019 , DigitalGlobe, U.S. Geological Survey, USDA Farm Service Agency

©2019, SITES USA Inc., Chandler, AZ (480) 491-1112. All Rights Reserved.

Lat: 35.24554 Long: -82.20552 Zoom: 17
Logos are for identification purposes only and may be trademarks of their respective companies.

W Mills St
Columbus, NC 28722



Lat: 35.23701 Long: -82.20726 Zoom: 13

Logos are for identification purposes only and may be trademarks of their respective companies

Map data ©2019 Google

©2019, SITES USA Inc., Chandler, AZ (480) 491-1112. All Rights Reserved.

This map was produced using data from private and government sources deemed to be reliable. The information herein is provided without representation or warranty.

GRAPHIC PROFILE

2000-2010 Census, 2019 Estimates with 2024 Projections

Calculated using Weighted Block Centroid from Block Groups

Lat/Lon: 35.2431/-82.2064

RGRAP3

W Mills St

Columbus, NC 28722

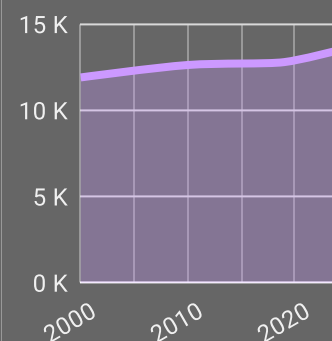
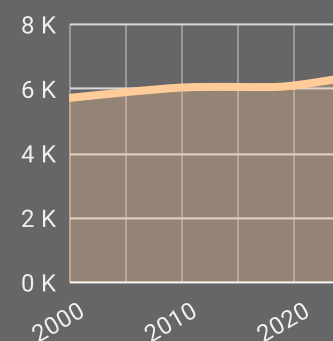
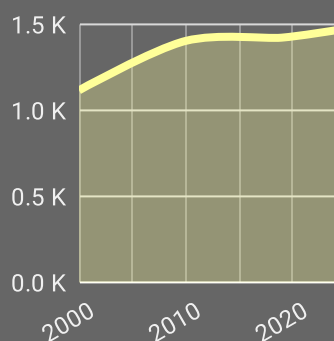
1 mi radius

3 mi radius

5 mi radius

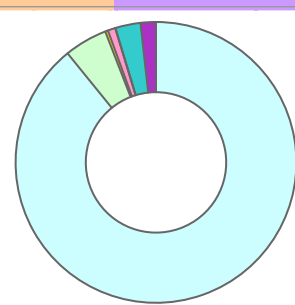
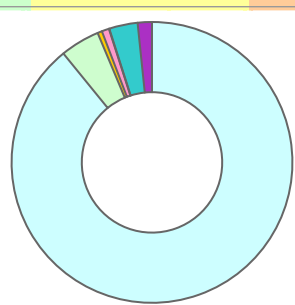
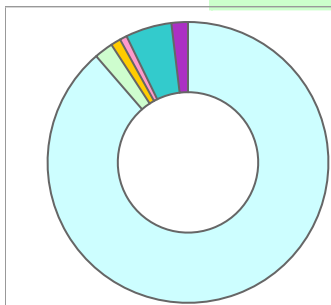
Population

Estimated Population (2019)	1,423	6,071	12,792
Projected Population (2024)	1,465	6,317	13,466
Census Population (2010)	1,404	6,041	12,627
Census Population (2000)	1,116	5,717	11,906
Projected Annual Growth (2019-2024)	42 0.6%	246 0.8%	674 1.1%
Historical Annual Growth (2010-2019)	19 0.1%	30 -	165 0.1%
Historical Annual Growth (2000-2010)	288 2.6%	324 0.6%	722 0.6%
Estimated Population Density (2019)	453 psm	215 psm	163 psm
Trade Area Size	3.1 sq mi	28.3 sq mi	78.5 sq mi



Race and Ethnicity (2019)

Not Hispanic or Latino Population	1,297 91.1%	5,671 93.4%	12,011 93.9%
White	1,231 94.9%	5,254 92.6%	11,078 92.2%
Black or African American	31 2.4%	276 4.9%	631 5.3%
American Indian or Alaska Native	2 0.2%	4 -	13 0.1%
Asian	12 0.9%	51 0.9%	109 0.9%
Hawaiian or Pacific Islander	- -	1 -	2 -
Other Race	2 0.1%	8 0.1%	11 -
Two or More Races	19 1.5%	77 1.3%	166 1.4%
Hispanic or Latino Population	126 8.9%	400 6.6%	782 6.1%
White	30 24.0%	156 39.1%	327 41.9%
Black or African American	- -	- -	3 0.3%
American Indian or Alaska Native	14 11.3%	27 6.7%	28 3.6%
Asian	- -	- -	2 0.3%
Hispanic Hawaiian or Pacific Islander	- -	2 0.5%	2 0.3%
Other Race	74 58.6%	191 47.7%	360 46.0%
Two or More Races	8 6.1%	23 5.7%	60 7.6%



White Black or African American American Indian or Alaska Native Asian Hawaiian or Pacific Islander Other Race 2+ Races

Lat/Lon: 35.2431/-82.2064

RGRAP3

W Mills St

Columbus, NC 28722

1 mi radius

3 mi radius

5 mi radius

Age Distribution (2019)

Age Under 5 Years	62	4.4%	213	3.5%	467	3.6%
Age 5 to 9 Years	53	3.7%	217	3.6%	503	3.9%
Age 10 to 14 Years	65	4.6%	263	4.3%	596	4.7%
Age 15 to 19 Years	58	4.1%	242	4.0%	588	4.6%
Age 20 to 24 Years	63	4.4%	238	3.9%	533	4.2%
Age 25 to 29 Years	65	4.6%	247	4.1%	549	4.3%
Age 30 to 34 Years	44	3.1%	188	3.1%	462	3.6%
Age 35 to 39 Years	42	2.9%	180	3.0%	475	3.7%
Age 40 to 44 Years	62	4.3%	252	4.1%	550	4.3%
Age 45 to 49 Years	66	4.6%	282	4.6%	686	5.4%
Age 50 to 54 Years	72	5.0%	349	5.8%	801	6.3%
Age 55 to 59 Years	81	5.7%	392	6.5%	969	7.6%
Age 60 to 64 Years	77	5.4%	463	7.6%	1,097	8.6%
Age 65 to 69 Years	97	6.8%	488	8.0%	1,097	8.6%
Age 70 to 74 Years	111	7.8%	549	9.0%	1,081	8.4%
Age 75 to 79 Years	121	8.5%	503	8.3%	882	6.9%
Age 80 to 84 Years	102	7.2%	396	6.5%	639	5.0%
Age 85 Years or Over	180	12.7%	609	10.0%	816	6.4%
Median Age	58.0		58.6		55.0	

Generation (2019)

iGeneration (Age Under 15 Years)	181	12.7%	693	11.4%	1,566	12.2%
Generation 9/11 Millennials (Age 15 to 34 Years)	231	16.2%	915	15.1%	2,132	16.7%
Gen Xers (Age 35 to 49 Years)	169	11.9%	714	11.8%	1,712	13.4%
Baby Boomers (Age 50 to 74 Years)	439	30.8%	2,241	36.9%	5,046	39.4%
Silent Generation (Age 75 to 84 Years)	224	15.7%	899	14.8%	1,521	11.9%
G.I. Generation (Age 85 Years or Over)	180	12.7%	609	10.0%	816	6.4%

40%

30%

20%

10%

0%

iGEN

GEN

GEN X

BOOMER

SILENT

GEN GI

40%

30%

20%

10%

0%

iGEN

GEN

GEN X

BOOMER

SILENT

GEN GI

40%

30%

20%

10%

0%

iGEN

GEN

GEN X

BOOMER

SILENT

GEN GI

©2019, Sites USA, Chandler, Arizona, 480-491-1112

page 2 of 3

Demographic Source: Applied Geographic Solutions 4/2019, TIGER Geography

This report was produced using data from private and government sources deemed to be reliable. The information herein is provided without representation or warranty.

GRAPHIC PROFILE

2000-2010 Census, 2019 Estimates with 2024 Projections

Calculated using Weighted Block Centroid from Block Groups

Lat/Lon: 35.2431/-82.2064

RGRAP3

W Mills St

Columbus, NC 28722

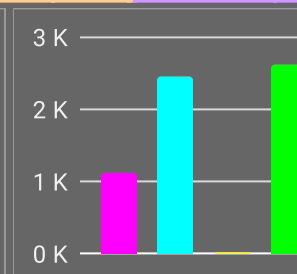
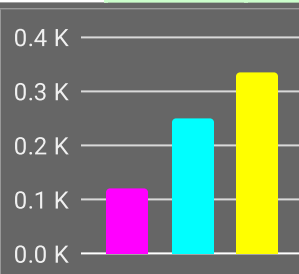
1 mi radius

3 mi radius

5 mi radius

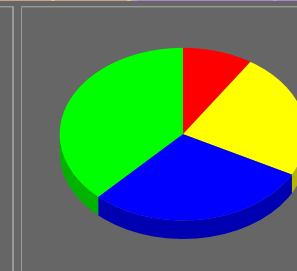
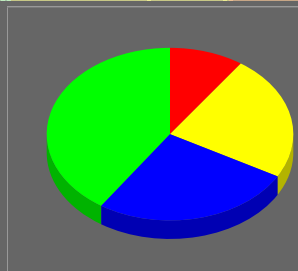
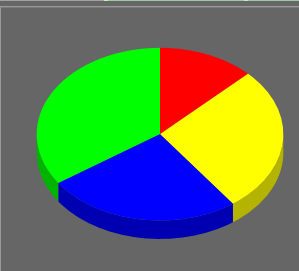
Household Type (2019)

Total Households	705	3,049	6,232
Family Households	370 52.4%	1,629 53.4%	3,586 57.5%
Family Households with Children	119 32.2%	488 29.9%	1,126 31.4%
Family Households No Children	251 67.8%	1,141 70.1%	2,460 68.6%
Non-Family Households	336 47.6%	1,419 46.6%	2,647 42.5%
Non-Family Households with Children	- -	5 0.3%	12 0.5%
Non-Family Households No Children	336 99.9%	1,415 99.7%	2,634 99.5%



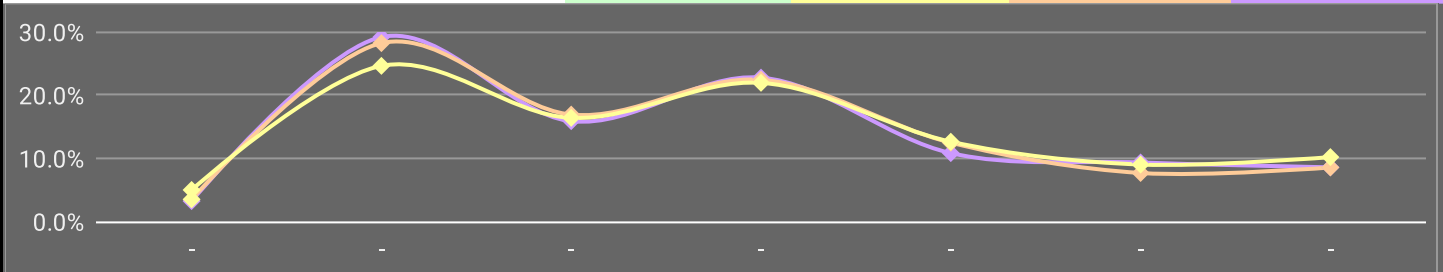
Education Attainment (2019)

Elementary or Some High School	142 12.7%	477 9.7%	930 9.2%
High School Graduate	306 27.3%	1,146 23.4%	2,381 23.6%
Some College or Associate Degree	286 25.5%	1,287 26.3%	2,959 29.3%
Bachelor or Graduate Degree	388 34.6%	1,988 40.6%	3,836 38.0%



Household Income (2019)

Estimated Average Household Income	\$76,580	\$72,217	\$73,156
Estimated Median Household Income	\$51,465	\$51,777	\$54,504
HH Income Under \$10,000	23 3.3%	108 3.5%	313 5.0%
HH Income \$10,000 to \$34,999	206 29.2%	861 28.3%	1,537 24.7%
HH Income \$35,000 to \$49,999	112 15.9%	517 16.9%	1,024 16.4%
HH Income \$50,000 to \$74,999	161 22.8%	685 22.5%	1,369 22.0%
HH Income \$75,000 to \$99,999	77 10.9%	381 12.5%	789 12.7%
HH Income \$100,000 to \$149,999	66 9.4%	235 7.7%	564 9.0%
HH Income \$150,000 or More	61 8.6%	262 8.6%	637 10.2%



This report was produced using data from private and government sources deemed to be reliable. The information herein is provided without representation or warranty.

EXPANDED PROFILE

2000-2010 Census, 2019 Estimates with 2024 Projections

Calculated using Weighted Block Centroid from Block Groups

Lat/Lon: 35.2431/-82.2064

RF5

W Mills St

Columbus, NC 28722

Population

	1 mi radius	3 mi radius	5 mi radius
Estimated Population (2019)	1,423	6,071	12,792
Projected Population (2024)	1,465	6,317	13,466
Census Population (2010)	1,404	6,041	12,627
Census Population (2000)	1,116	5,717	11,906
Projected Annual Growth (2019 to 2024)	42 0.6%	246 0.8%	674 1.1%
Historical Annual Growth (2010 to 2019)	19 0.1%	30 -	165 0.1%
Historical Annual Growth (2000 to 2010)	288 2.6%	324 0.6%	722 0.6%
Estimated Population Density (2019)	453 psm	215 psm	163 psm
Trade Area Size	3.1 sq mi	28.3 sq mi	78.5 sq mi

Households

Estimated Households (2019)	705	3,049	6,232
Projected Households (2024)	714	3,123	6,433
Census Households (2010)	644	2,814	5,743
Census Households (2000)	520	2,616	5,319
Estimated Households with Children (2019)	119 16.9%	492 16.1%	1,139 18.3%
Estimated Average Household Size (2019)	1.94	1.93	2.01

Average Household Income

Estimated Average Household Income (2019)	\$76,580	\$72,217	\$73,156
Projected Average Household Income (2024)	\$90,196	\$87,863	\$86,218
Estimated Average Family Income (2019)	\$116,563	\$96,824	\$94,191

Median Household Income

Estimated Median Household Income (2019)	\$51,465	\$51,777	\$54,504
Projected Median Household Income (2024)	\$60,431	\$60,187	\$63,262
Estimated Median Family Income (2019)	\$66,419	\$64,238	\$68,318

Per Capita Income

Estimated Per Capita Income (2019)	\$38,395	\$36,533	\$35,799
Projected Per Capita Income (2024)	\$44,359	\$43,693	\$41,335
Estimated Per Capita Income 5 Year Growth	\$5,965 15.5%	\$7,160 19.6%	\$5,536 15.5%
Estimated Average Household Net Worth (2019)	\$416,345	\$404,267	\$448,817

Daytime Demos (2019)

Total Businesses	198	498	819
Total Employees	2,032	4,086	6,004
Company Headquarter Businesses	2 0.8%	2 0.4%	2 0.2%
Company Headquarter Employees	213 10.5%	276 6.8%	276 4.6%
Employee Population per Business	10.3	8.2	7.3
Residential Population per Business	7.2	12.2	15.6

This report was produced using data from private and government sources deemed to be reliable. The information herein is provided without representation or warranty.

EXPANDED PROFILE

2000-2010 Census, 2019 Estimates with 2024 Projections

Calculated using Weighted Block Centroid from Block Groups

Lat/Lon: 35.2431/-82.2064

RF5

W Mills St

Columbus, NC 28722

Race & Ethnicity

	1 mi radius		3 mi radius		5 mi radius	
White (2019)	1,261	88.6%	5,410	89.1%	11,405	89.2%
Black or African American (2019)	31	2.2%	276	4.5%	634	5.0%
American Indian or Alaska Native (2019)	16	1.1%	31	0.5%	42	0.3%
Asian (2019)	12	0.8%	52	0.9%	111	0.9%
Hawaiian or Pacific Islander (2019)	-	-	3	-	4	-
Other Race (2019)	76	5.3%	199	3.3%	371	2.9%
Two or More Races (2019)	27	1.9%	99	1.6%	226	1.8%
Not Hispanic or Latino Population (2019)	1,297	91.1%	5,671	93.4%	12,011	93.9%
Hispanic or Latino Population (2019)	126	8.9%	400	6.6%	782	6.1%
Not Hispanic or Latino Population (2024)	1,322	90.2%	5,834	92.4%	12,524	93.0%
Hispanic or Latino Population (2024)	143	9.8%	483	7.6%	943	7.0%
Not Hispanic or Latino Population (2010)	1,286	91.6%	5,689	94.2%	11,960	94.7%
Hispanic or Latino Population (2010)	118	8.4%	352	5.8%	667	5.3%
Not Hispanic or Latino Population (2000)	1,079	96.6%	5,547	97.0%	11,610	97.5%
Hispanic or Latino Population (2000)	38	3.4%	170	3.0%	295	2.5%
Projected Hispanic Annual Growth (2019 to 2024)	17	2.7%	83	4.1%	161	4.1%
Historic Hispanic Annual Growth (2000 to 2019)	89	12.3%	231	7.1%	486	8.7%

Age Distribution (2019)

Age Under 5	62	4.4%	213	3.5%	467	3.6%
Age 5 to 9 Years	53	3.7%	217	3.6%	503	3.9%
Age 10 to 14 Years	65	4.6%	263	4.3%	596	4.7%
Age 15 to 19 Years	58	4.1%	242	4.0%	588	4.6%
Age 20 to 24 Years	63	4.4%	238	3.9%	533	4.2%
Age 25 to 29 Years	65	4.6%	247	4.1%	549	4.3%
Age 30 to 34 Years	44	3.1%	188	3.1%	462	3.6%
Age 35 to 39 Years	42	2.9%	180	3.0%	475	3.7%
Age 40 to 44 Years	62	4.3%	252	4.1%	550	4.3%
Age 45 to 49 Years	66	4.6%	282	4.6%	686	5.4%
Age 50 to 54 Years	72	5.0%	349	5.8%	801	6.3%
Age 55 to 59 Years	81	5.7%	392	6.5%	969	7.6%
Age 60 to 64 Years	77	5.4%	463	7.6%	1,097	8.6%
Age 65 to 74 Years	209	14.7%	1,037	17.1%	2,178	17.0%
Age 75 to 84 Years	224	15.7%	899	14.8%	1,521	11.9%
Age 85 Years or Over	180	12.7%	609	10.0%	816	6.4%
Median Age	58.0		58.6		55.0	

Gender Age Distribution (2019)

Female Population	794	55.8%	3,325	54.8%	6,793	53.1%
Age 0 to 19 Years	117	14.7%	462	13.9%	1,064	15.7%
Age 20 to 64 Years	302	38.1%	1,362	41.0%	3,181	46.8%
Age 65 Years or Over	375	47.2%	1,501	45.1%	2,549	37.5%
Female Median Age	61.9		61.3		56.9	
Male Population	629	44.2%	2,746	45.2%	5,999	46.9%
Age 0 to 19 Years	122	19.4%	473	17.2%	1,090	18.2%
Age 20 to 64 Years	269	42.8%	1,229	44.7%	2,943	49.1%
Age 65 Years or Over	238	37.8%	1,044	38.0%	1,966	32.8%
Male Median Age	52.1		55.1		52.8	

This report was produced using data from private and government sources deemed to be reliable. The information herein is provided without representation or warranty.

EXPANDED PROFILE

2000-2010 Census, 2019 Estimates with 2024 Projections

Calculated using Weighted Block Centroid from Block Groups

Lat/Lon: 35.2431/-82.2064

RF5

W Mills St

Columbus, NC 28722

1 mi radius

3 mi radius

5 mi radius

Household Income Distribution (2019)

HH Income \$200,000 or More	28	3.9%	104	3.4%	244	3.9%
HH Income \$150,000 to \$199,999	33	4.7%	158	5.2%	393	6.3%
HH Income \$100,000 to \$149,999	66	9.4%	235	7.7%	564	9.0%
HH Income \$75,000 to \$99,999	77	10.9%	381	12.5%	789	12.7%
HH Income \$50,000 to \$74,999	161	22.8%	685	22.5%	1,369	22.0%
HH Income \$35,000 to \$49,999	112	15.9%	517	16.9%	1,024	16.4%
HH Income \$25,000 to \$34,999	90	12.7%	429	14.1%	677	10.9%
HH Income \$15,000 to \$24,999	84	11.8%	331	10.8%	662	10.6%
HH Income Under \$15,000	56	7.9%	210	6.9%	511	8.2%
HH Income \$35,000 or More	476	67.5%	2,079	68.2%	4,383	70.3%
HH Income \$75,000 or More	203	28.8%	878	28.8%	1,990	31.9%

Housing (2019)

Total Housing Units	772		3,529		7,432	
Housing Units Occupied	705	91.4%	3,049	86.4%	6,232	83.9%
Housing Units Owner-Occupied	416	59.0%	2,084	68.4%	4,600	73.8%
Housing Units, Renter-Occupied	289	41.0%	965	31.6%	1,632	26.2%
Housing Units, Vacant	66	9.4%	481	15.8%	1,200	19.3%

Marital Status (2019)

Never Married	273	22.0%	1,118	20.8%	2,549	22.7%
Currently Married	591	47.6%	2,467	45.9%	5,605	49.9%
Separated	49	4.0%	318	5.9%	492	4.4%
Widowed	171	13.8%	801	14.9%	1,193	10.6%
Divorced	157	12.7%	674	12.5%	1,388	12.4%

Household Type (2019)

Population Family	1,019	71.6%	4,350	71.7%	9,648	75.4%
Population Non-Family	351	24.7%	1,533	25.3%	2,905	22.7%
Population Group Quarters	53	3.7%	188	3.1%	240	1.9%
Family Households	370	52.4%	1,629	53.4%	3,586	57.5%
Non-Family Households	336	47.6%	1,419	46.6%	2,647	42.5%
Married Couple with Children	73	12.4%	316	12.8%	732	13.1%
Average Family Household Size	2.8		2.7		2.7	

Household Size (2019)

1 Person Households	321	45.4%	1,323	43.4%	2,422	38.9%
2 Person Households	233	33.0%	1,128	37.0%	2,433	39.0%
3 Person Households	66	9.3%	269	8.8%	626	10.1%
4 Person Households	50	7.1%	186	6.1%	444	7.1%
5 Person Households	23	3.2%	86	2.8%	194	3.1%
6 or More Person Households	14	2.0%	56	1.8%	113	1.8%

Household Vehicles (2019)

Households with 0 Vehicles Available	88	12.5%	334	10.9%	460	7.4%
Households with 1 Vehicles Available	215	30.5%	832	27.3%	1,672	26.8%
Households with 2 or More Vehicles Available	402	57.0%	1,883	61.8%	4,101	65.8%
Total Vehicles Available	1,240		5,664		12,405	
Average Vehicles Per Household	1.8		1.9		2.0	

This report was produced using data from private and government sources deemed to be reliable. The information herein is provided without representation or warranty.

EXPANDED PROFILE

2000-2010 Census, 2019 Estimates with 2024 Projections

Calculated using Weighted Block Centroid from Block Groups

Lat/Lon: 35.2431/-82.2064

RF5

W Mills St

Columbus, NC 28722

1 mi radius

3 mi radius

5 mi radius

Labor Force (2019)

Estimated Labor Population Age 16 Years or Over	1,226		5,320		11,093	
Estimated Civilian Employed	560	45.7%	2,374	44.6%	5,312	47.9%
Estimated Civilian Unemployed	24	2.0%	79	1.5%	206	1.9%
Estimated in Armed Forces	11	0.9%	20	0.4%	21	0.2%
Estimated Not in Labor Force	630	51.4%	2,847	53.5%	5,554	50.1%
Unemployment Rate	2.0%		1.5%		1.9%	

Occupation (2019)

Occupation: Population Age 16 Years or Over	560		2,374		5,312	
Management, Business, Financial Operations	86	15.3%	395	16.6%	827	15.6%
Professional, Related	119	21.3%	527	22.2%	1,120	21.1%
Service	123	22.0%	531	22.4%	1,063	20.0%
Sales, Office	127	22.7%	537	22.6%	1,323	24.9%
Farming, Fishing, Forestry	-	-	1	-	3	-
Construct, Extraction, Maintenance	59	10.4%	246	10.3%	522	9.8%
Production, Transport Material Moving	46	8.2%	137	5.8%	454	8.5%
White Collar Workers	332	59.3%	1,459	61.5%	3,270	61.6%
Blue Collar Workers	228	40.7%	915	38.5%	2,042	38.4%

Consumer Expenditure (2019)

Total Household Expenditure	\$41.48 M		\$171.54 M		\$353.76 M	
Total Non-Retail Expenditure	\$21.99 M	53.0%	\$90.78 M	52.9%	\$186.96 M	52.8%
Total Retail Expenditure	\$19.5 M	47.0%	\$80.76 M	47.1%	\$166.81 M	47.2%
Apparel	\$1.41 M	3.4%	\$5.84 M	3.4%	\$12.11 M	3.4%
Contributions	\$1.35 M	3.2%	\$5.59 M	3.3%	\$11.56 M	3.3%
Education	\$1.11 M	2.7%	\$4.53 M	2.6%	\$9.62 M	2.7%
Entertainment	\$2.29 M	5.5%	\$9.51 M	5.5%	\$19.75 M	5.6%
Food and Beverages	\$6.12 M	14.8%	\$25.29 M	14.7%	\$52.09 M	14.7%
Furnishings and Equipment	\$1.43 M	3.4%	\$5.93 M	3.5%	\$12.3 M	3.5%
Gifts	\$997.07 K	2.4%	\$4.1 M	2.4%	\$8.46 M	2.4%
Health Care	\$3.68 M	8.9%	\$15.29 M	8.9%	\$31.25 M	8.8%
Household Operations	\$1.62 M	3.9%	\$6.72 M	3.9%	\$13.88 M	3.9%
Miscellaneous Expenses	\$791.7 K	1.9%	\$3.28 M	1.9%	\$6.75 M	1.9%
Personal Care	\$555.49 K	1.3%	\$2.3 M	1.3%	\$4.74 M	1.3%
Personal Insurance	\$279.7 K	0.7%	\$1.17 M	0.7%	\$2.44 M	0.7%
Reading	\$93.07 K	0.2%	\$385.59 K	0.2%	\$791.25 K	0.2%
Shelter	\$8.82 M	21.3%	\$36.29 M	21.2%	\$74.58 M	21.1%
Tobacco	\$274.52 K	0.7%	\$1.13 M	0.7%	\$2.29 M	0.6%
Transportation	\$7.48 M	18.0%	\$31 M	18.1%	\$64.17 M	18.1%
Utilities	\$3.19 M	7.7%	\$13.21 M	7.7%	\$26.98 M	7.6%

Educational Attainment (2019)

Adult Population Age 25 Years or Over	1,121		4,898		10,106	
Elementary (Grade Level 0 to 8)	82	7.3%	271	5.5%	423	4.2%
Some High School (Grade Level 9 to 11)	60	5.3%	206	4.2%	507	5.0%
High School Graduate	306	27.3%	1,146	23.4%	2,381	23.6%
Some College	189	16.9%	881	18.0%	1,997	19.8%
Associate Degree Only	97	8.6%	406	8.3%	961	9.5%
Bachelor Degree Only	245	21.8%	1,210	24.7%	2,395	23.7%
Graduate Degree	143	12.7%	777	15.9%	1,441	14.3%

This report was produced using data from private and government sources deemed to be reliable. The information herein is provided without representation or warranty.

EXPANDED PROFILE

2000-2010 Census, 2019 Estimates with 2024 Projections

Calculated using Weighted Block Centroid from Block Groups

Lat/Lon: 35.2431/-82.2064

RF5

W Mills St

Columbus, NC 28722

Units In Structure (2019)

	1 mi radius		3 mi radius		5 mi radius	
1 Detached Unit	452	70.3%	2,137	75.9%	4,740	82.5%
1 Attached Unit	18	2.8%	77	2.7%	125	2.2%
2 to 4 Units	23	3.6%	161	5.7%	272	4.7%
5 to 9 Units	29	4.5%	143	5.1%	184	3.2%
10 to 19 Units	7	1.0%	63	2.2%	99	1.7%
20 to 49 Units	16	2.5%	49	1.7%	52	0.9%
50 or More Units	99	15.3%	196	7.0%	215	3.7%
Mobile Home or Trailer	61	9.5%	223	7.9%	544	9.5%
Other Structure	-	-	-	-	2	-

Homes Built By Year (2019)

Homes Built 2010 or later	6	1.0%	44	1.5%	108	1.9%
Homes Built 2000 to 2009	76	11.8%	337	12.0%	862	15.0%
Homes Built 1990 to 1999	140	21.8%	582	20.7%	1,162	20.2%
Homes Built 1980 to 1989	116	18.0%	508	18.0%	972	16.9%
Homes Built 1970 to 1979	81	12.6%	424	15.1%	745	13.0%
Homes Built 1960 to 1969	74	11.5%	332	11.8%	694	12.1%
Homes Built 1950 to 1959	89	13.8%	263	9.3%	558	9.7%
Homes Built Before 1949	122	19.0%	560	19.9%	1,133	19.7%

Home Values (2019)

Home Values \$1,000,000 or More	2	0.4%	51	2.6%	78	1.8%
Home Values \$500,000 to \$999,999	18	4.6%	120	6.2%	381	9.0%
Home Values \$400,000 to \$499,999	11	2.9%	117	6.1%	260	6.1%
Home Values \$300,000 to \$399,999	42	10.9%	305	15.8%	663	15.7%
Home Values \$200,000 to \$299,999	70	18.2%	447	23.2%	959	22.7%
Home Values \$150,000 to \$199,999	78	20.5%	315	16.4%	707	16.7%
Home Values \$100,000 to \$149,999	123	32.3%	419	21.7%	824	19.5%
Home Values \$70,000 to \$99,999	26	6.7%	150	7.8%	315	7.5%
Home Values \$50,000 to \$69,999	9	2.4%	40	2.1%	136	3.2%
Home Values \$25,000 to \$49,999	16	4.1%	47	2.4%	91	2.2%
Home Values Under \$25,000	11	2.9%	48	2.5%	129	3.0%
Owner-Occupied Median Home Value	\$160,841		\$209,143		\$220,387	
Renter-Occupied Median Rent	\$697		\$826		\$752	

Transportation To Work (2019)

Drive to Work Alone	532	86.9%	2,197	83.9%	4,554	80.1%
Drive to Work in Carpool	48	7.8%	257	9.8%	622	11.0%
Travel to Work by Public Transportation	9	1.5%	23	0.9%	35	0.6%
Drive to Work on Motorcycle	-	-	2	-	14	0.2%
Walk or Bicycle to Work	2	0.3%	25	0.9%	83	1.5%
Other Means	12	2.0%	40	1.5%	71	1.3%
Work at Home	10	1.6%	74	2.8%	302	5.3%

Travel Time (2019)

Travel to Work in 14 Minutes or Less	225	36.8%	823	31.4%	1,699	29.9%
Travel to Work in 15 to 29 Minutes	123	20.0%	612	23.4%	1,359	23.9%
Travel to Work in 30 to 59 Minutes	196	32.0%	810	30.9%	1,786	31.4%
Travel to Work in 60 Minutes or More	8	1.3%	63	2.4%	187	3.3%
Average Minutes Travel to Work	19.1		20.2		21.4	

This report was produced using data from private and government sources deemed to be reliable. The information herein is provided without representation or warranty.