

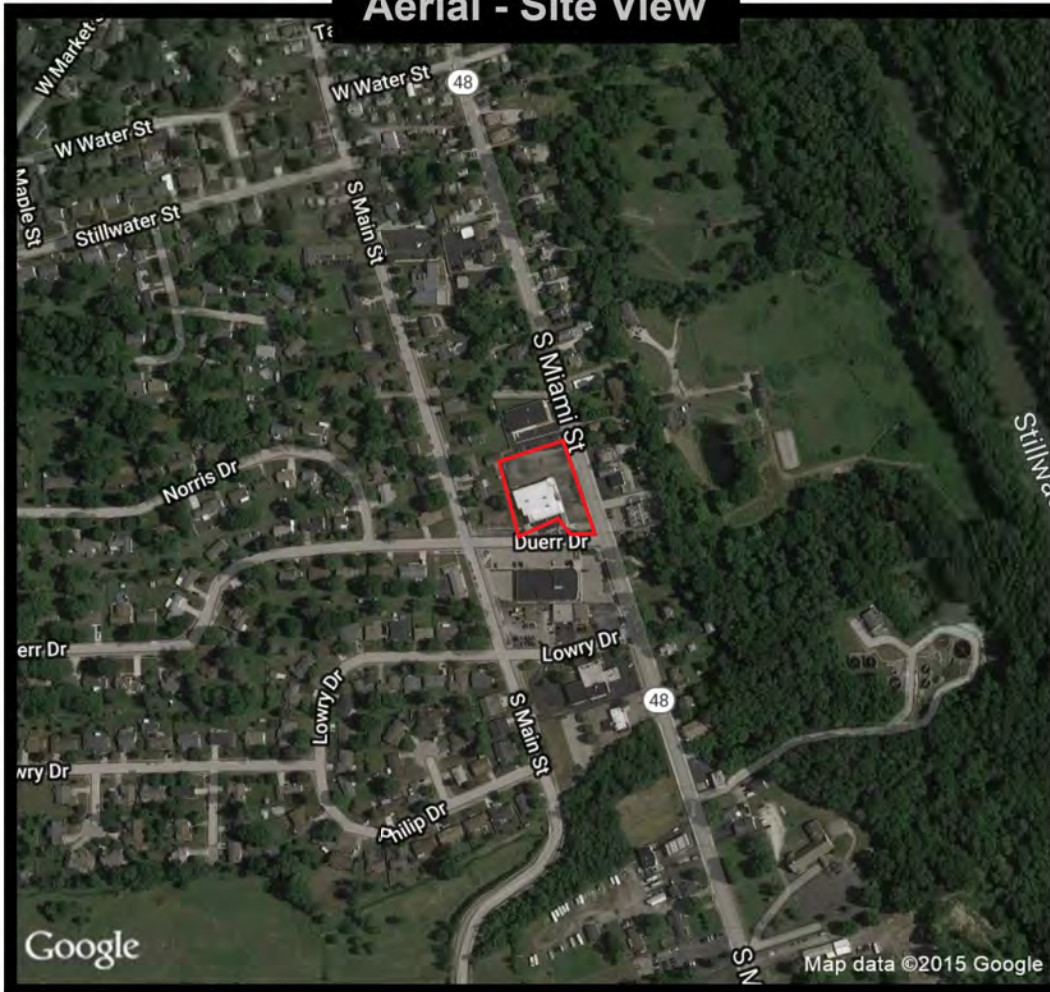
689 S Miami St
West Milton, OH 45383

\$12/sq. ft. NNN

*NNN includes but not limited to Real Estate Taxes, Insurance, and CAM (such as parking lot maintenance, snow removal, lawn care, etc.)

RETAIL SPACE FOR LEASE

Aerial - Site View



2,225 sq. ft. available in newly-remodeled building with Dollar Tree and adjacent to Subway, next to O'Reilly Auto Parts

Large parking lot and tenant pylon sign available

Approximately 14 miles Northwest of Dayton

Population Density Shading



Population Density

By Blockgroups

- 7,500 or more
- 5,000 to 7,500
- 2,500 to 5,000
- 1,000 to 2,500
- Less than 1,000

Demographic Data

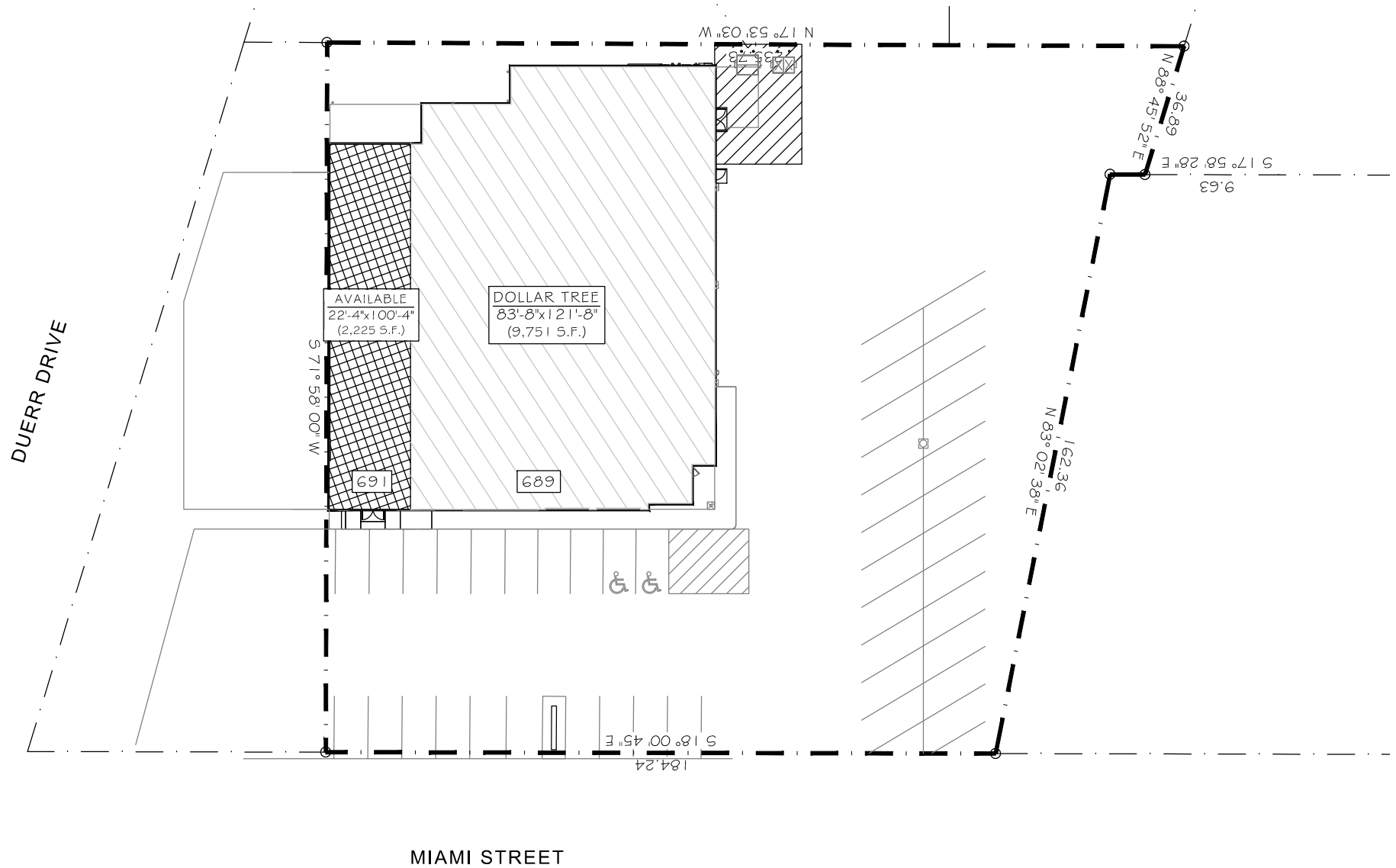
	1 mi radius	3 mi radius	5 mi radius
Population (2019)	4,093	8,593	19,241
Households (2019)	1,787	3,616	8,035
Median household income (2019)	\$51,616	\$58,226	\$66,134
Total Employees	712	1,298	2,262
Total Establishments	106	199	323

COCCA DEVELOPMENT, LTD

100 DEBARTOLO PLACE SUITE 400 BOARDMAN, OHIO 44512
(330) 729-1010

WWW.COCCADEVELOPMENT.COM

This map was produced using data from private and government sources deemed to be reliable. The information herein is provided without representation or warranty.

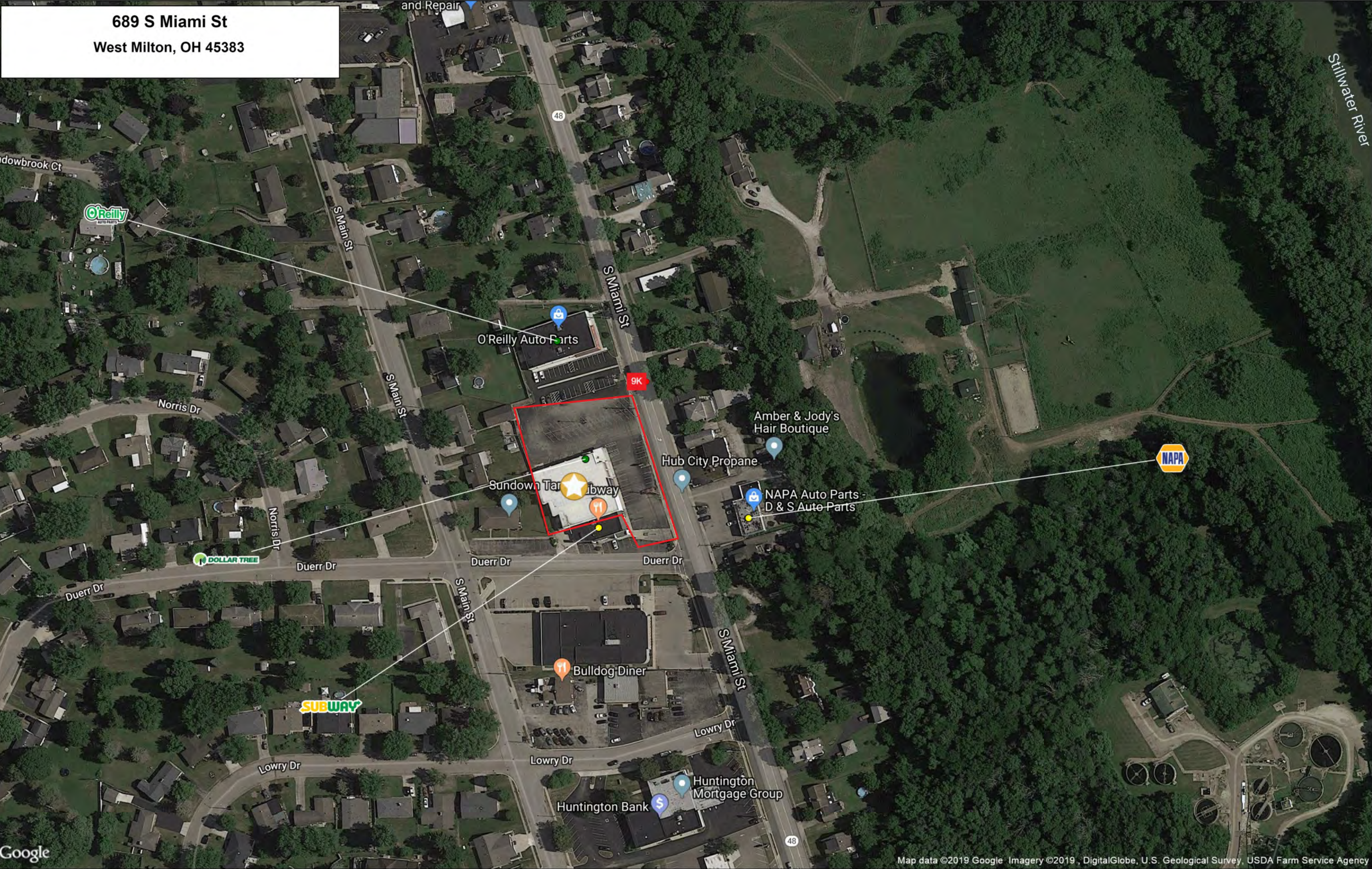


SITE PLAN

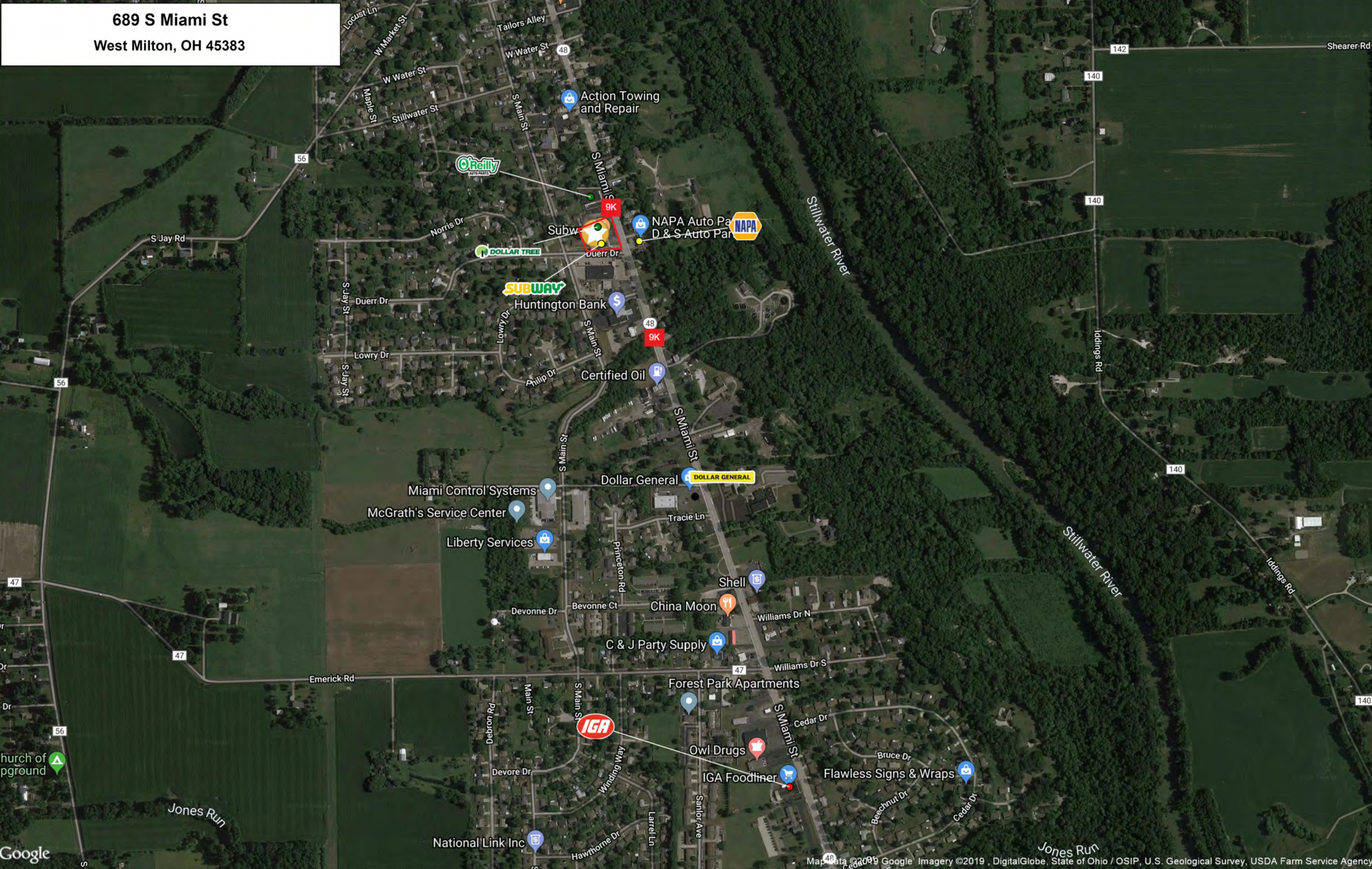
SCALE: 1" = 40'-0"

691 & 689 SOUTH MIAMI STREET
WEST MILTON, OHIO 45383
MIAMI COUNTY

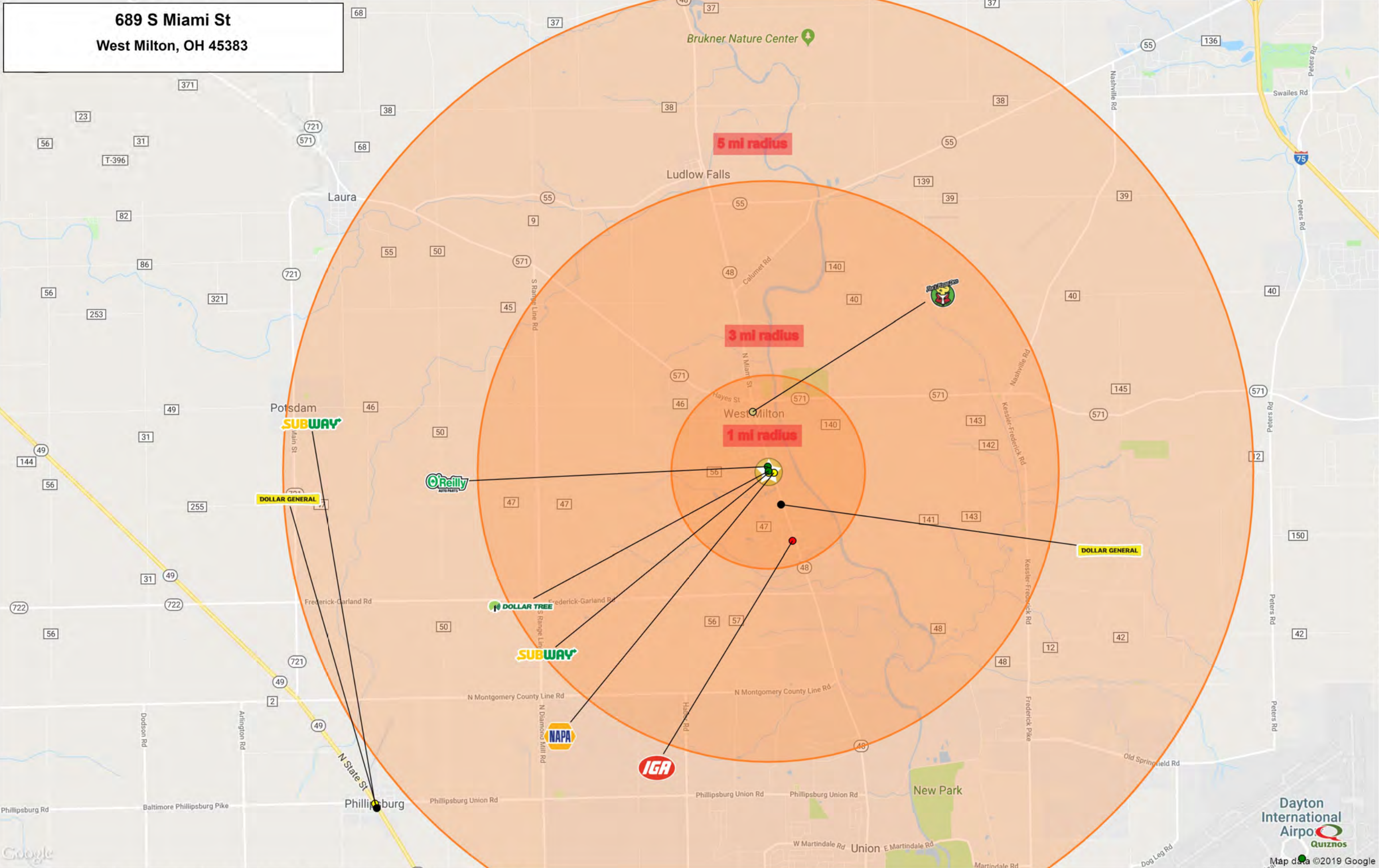
689 S Miami St
West Milton, OH 45383



689 S Miami St
West Milton, OH 45383



689 S Miami St
West Milton, OH 45383



GRAPHIC PROFILE

2000-2010 Census, 2019 Estimates with 2024 Projections

Calculated using Weighted Block Centroid from Block Groups

Lat/Lon: 39.9539/-84.3252

RGRAP3

689 S Miami St

West Milton, OH 45383

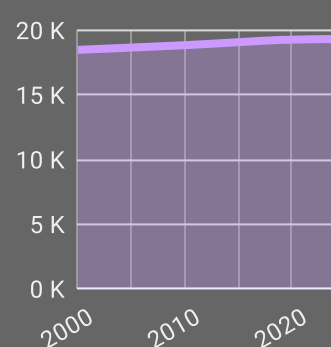
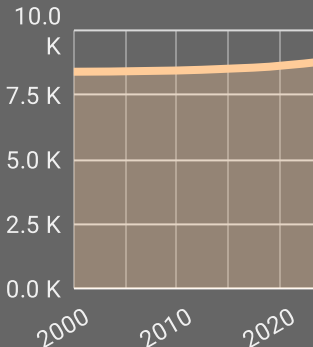
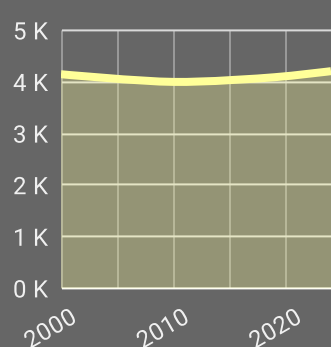
1 mi radius

3 mi radius

5 mi radius

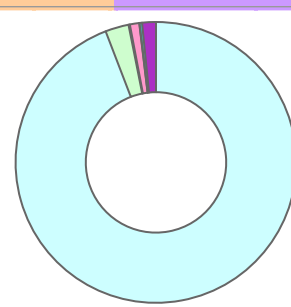
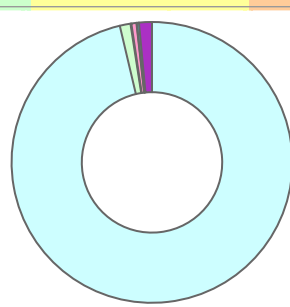
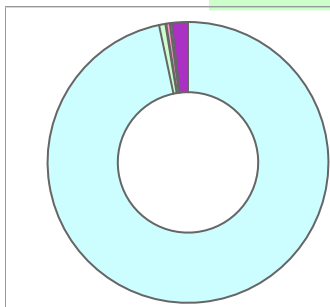
Population

Estimated Population (2019)	4,093	8,593	19,241
Projected Population (2024)	4,210	8,788	19,307
Census Population (2010)	4,002	8,445	18,833
Census Population (2000)	4,151	8,398	18,474
Projected Annual Growth (2019-2024)	117 0.6%	195 0.5%	65 -
Historical Annual Growth (2010-2019)	91 0.2%	148 0.2%	408 0.2%
Historical Annual Growth (2000-2010)	-149 -0.4%	47 -	359 0.2%
Estimated Population Density (2019)	1,303 psm	304 psm	245 psm
Trade Area Size	3.1 sq mi	28.3 sq mi	78.5 sq mi



Race and Ethnicity (2019)

Not Hispanic or Latino Population	4,045 98.8%	8,485 98.7%	18,931 98.4%
White	3,935 97.3%	8,215 96.8%	17,905 94.6%
Black or African American	30 0.7%	106 1.2%	513 2.7%
American Indian or Alaska Native	4 -	9 0.1%	30 0.2%
Asian	15 0.4%	48 0.6%	204 1.1%
Hawaiian or Pacific Islander	- -	3 -	4 -
Other Race	- -	- -	3 -
Two or More Races	60 1.5%	104 1.2%	271 1.4%
Hispanic or Latino Population	48 1.2%	108 1.3%	310 1.6%
White	21 45.0%	61 56.0%	212 68.4%
Black or African American	- -	- -	6 2.0%
American Indian or Alaska Native	- -	- -	- -
Asian	2 4.0%	2 1.8%	3 0.9%
Hispanic Hawaiian or Pacific Islander	- -	- -	- -
Other Race	9 19.2%	22 19.9%	55 17.7%
Two or More Races	15 31.8%	24 22.0%	34 10.9%



White Black or African American American Indian or Alaska Native Asian Hawaiian or Pacific Islander Other Race 2+ Races

GRAPHIC PROFILE

2000-2010 Census, 2019 Estimates with 2024 Projections

Calculated using Weighted Block Centroid from Block Groups

Lat/Lon: 39.9539/-84.3252

RGRAP3

689 S Miami St

West Milton, OH 45383

1 mi radius

3 mi radius

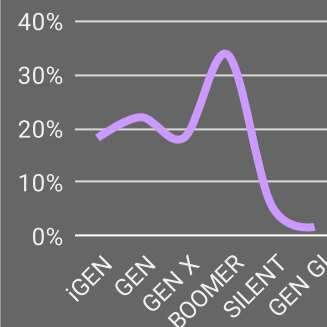
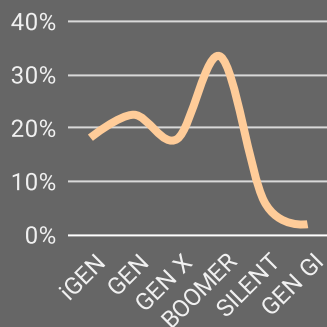
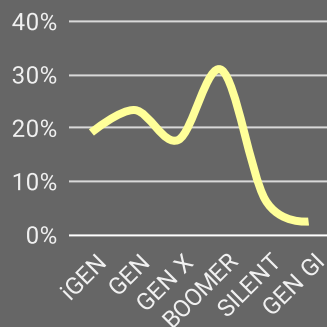
5 mi radius

Age Distribution (2019)

Age Under 5 Years	248	6.1%	481	5.6%	1,075	5.6%
Age 5 to 9 Years	249	6.1%	505	5.9%	1,168	6.1%
Age 10 to 14 Years	285	7.0%	573	6.7%	1,266	6.6%
Age 15 to 19 Years	245	6.0%	527	6.1%	1,160	6.0%
Age 20 to 24 Years	225	5.5%	450	5.2%	938	4.9%
Age 25 to 29 Years	260	6.4%	479	5.6%	1,073	5.6%
Age 30 to 34 Years	224	5.5%	474	5.5%	1,084	5.6%
Age 35 to 39 Years	252	6.1%	506	5.9%	1,154	6.0%
Age 40 to 44 Years	232	5.7%	492	5.7%	1,127	5.9%
Age 45 to 49 Years	242	5.9%	542	6.3%	1,248	6.5%
Age 50 to 54 Years	239	5.9%	563	6.5%	1,307	6.8%
Age 55 to 59 Years	265	6.5%	612	7.1%	1,442	7.5%
Age 60 to 64 Years	265	6.5%	610	7.1%	1,372	7.1%
Age 65 to 69 Years	263	6.4%	573	6.7%	1,274	6.6%
Age 70 to 74 Years	230	5.6%	506	5.9%	1,102	5.7%
Age 75 to 79 Years	169	4.1%	346	4.0%	729	3.8%
Age 80 to 84 Years	99	2.4%	188	2.2%	394	2.0%
Age 85 Years or Over	100	2.4%	167	1.9%	328	1.7%
Median Age	40.3		42.0		42.0	

Generation (2019)

iGeneration (Age Under 15 Years)	783	19.1%	1,559	18.1%	3,509	18.2%
Generation 9/11 Millennials (Age 15 to 34 Years)	955	23.3%	1,929	22.5%	4,255	22.1%
Gen Xers (Age 35 to 49 Years)	726	17.7%	1,540	17.9%	3,528	18.3%
Baby Boomers (Age 50 to 74 Years)	1,262	30.8%	2,863	33.3%	6,496	33.8%
Silent Generation (Age 75 to 84 Years)	268	6.5%	535	6.2%	1,124	5.8%
G.I. Generation (Age 85 Years or Over)	100	2.4%	167	1.9%	328	1.7%



This report was produced using data from private and government sources deemed to be reliable. The information herein is provided without representation or warranty.

GRAPHIC PROFILE

2000-2010 Census, 2019 Estimates with 2024 Projections

Calculated using Weighted Block Centroid from Block Groups

Lat/Lon: 39.9539/-84.3252

RGRAP3

689 S Miami St

West Milton, OH 45383

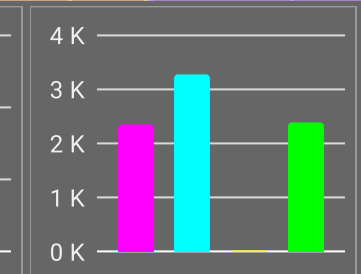
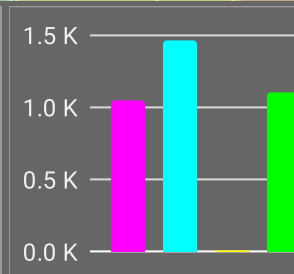
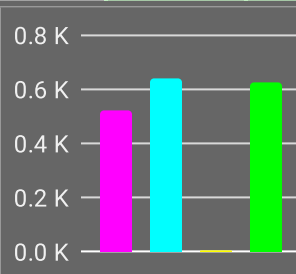
1 mi radius

3 mi radius

5 mi radius

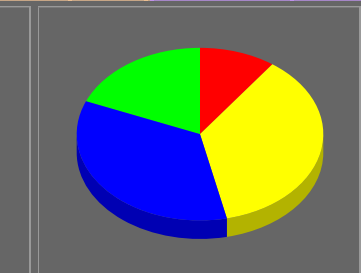
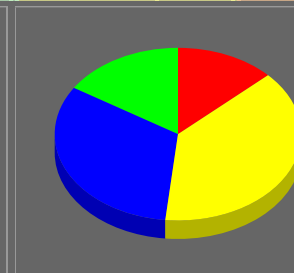
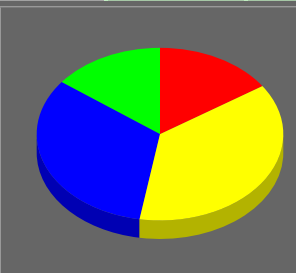
Household Type (2019)

Total Households	1,787	3,616	8,035
Family Households	1,158 64.8%	2,508 69.4%	5,637 70.2%
Family Households with Children	521 45.0%	1,049 41.8%	2,358 41.8%
Family Households No Children	637 55.0%	1,459 58.2%	3,279 58.2%
Non-Family Households	629 35.2%	1,108 30.6%	2,398 29.8%
Non-Family Households with Children	6 0.9%	11 1.0%	19 0.8%
Non-Family Households No Children	623 99.1%	1,097 99.0%	2,379 99.2%



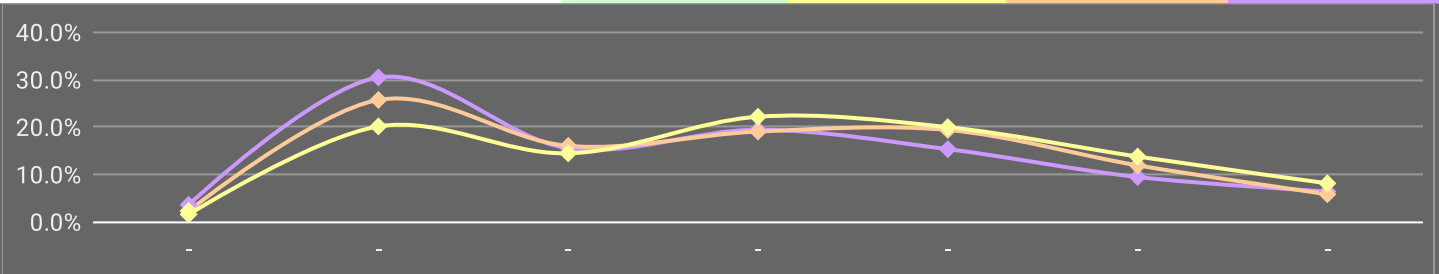
Education Attainment (2019)

Elementary or Some High School	443 15.6%	789 13.0%	1,361 10.0%
High School Graduate	1,052 37.1%	2,339 38.6%	4,979 36.5%
Some College or Associate Degree	927 32.6%	1,960 32.4%	4,734 34.7%
Bachelor or Graduate Degree	417 14.7%	969 16.0%	2,560 18.8%



Household Income (2019)

Estimated Average Household Income	\$60,188	\$63,165	\$75,974
Estimated Median Household Income	\$51,616	\$58,226	\$66,134
HH Income Under \$10,000	64 3.6%	82 2.3%	124 1.5%
HH Income \$10,000 to \$34,999	544 30.4%	929 25.7%	1,615 20.1%
HH Income \$35,000 to \$49,999	277 15.5%	578 16.0%	1,159 14.4%
HH Income \$50,000 to \$74,999	347 19.4%	688 19.0%	1,780 22.1%
HH Income \$75,000 to \$99,999	273 15.3%	700 19.4%	1,603 19.9%
HH Income \$100,000 to \$149,999	168 9.4%	430 11.9%	1,105 13.7%
HH Income \$150,000 or More	114 6.4%	209 5.8%	650 8.1%



This report was produced using data from private and government sources deemed to be reliable. The information herein is provided without representation or warranty.

EXPANDED PROFILE

2000-2010 Census, 2019 Estimates with 2024 Projections

Calculated using Weighted Block Centroid from Block Groups

Lat/Lon: 39.9539/-84.3252

RF5

689 S Miami St		1 mi radius		3 mi radius		5 mi radius	
West Milton, OH 45383							
Population							
Estimated Population (2019)	4,093		8,593		19,241		
Projected Population (2024)	4,210		8,788		19,307		
Census Population (2010)	4,002		8,445		18,833		
Census Population (2000)	4,151		8,398		18,474		
Projected Annual Growth (2019 to 2024)	117	0.6%	195	0.5%	65	-	
Historical Annual Growth (2010 to 2019)	91	0.2%	148	0.2%	408	0.2%	
Historical Annual Growth (2000 to 2010)	-149	-0.4%	47	-	359	0.2%	
Estimated Population Density (2019)	1,303	psm	304	psm	245	psm	
Trade Area Size	3.1	sq mi	28.3	sq mi	78.5	sq mi	
Households							
Estimated Households (2019)	1,787		3,616		8,035		
Projected Households (2024)	1,800		3,631		7,964		
Census Households (2010)	1,714		3,472		7,601		
Census Households (2000)	1,700		3,323		7,111		
Estimated Households with Children (2019)	527	29.5%	1,060	29.3%	2,378	29.6%	
Estimated Average Household Size (2019)	2.29		2.38		2.39		
Average Household Income							
Estimated Average Household Income (2019)	\$60,188		\$63,165		\$75,974		
Projected Average Household Income (2024)	\$70,735		\$70,845		\$89,171		
Estimated Average Family Income (2019)	\$73,201		\$74,143		\$91,022		
Median Household Income							
Estimated Median Household Income (2019)	\$51,616		\$58,226		\$66,134		
Projected Median Household Income (2024)	\$59,059		\$66,774		\$76,539		
Estimated Median Family Income (2019)	\$66,595		\$71,564		\$78,979		
Per Capita Income							
Estimated Per Capita Income (2019)	\$26,273		\$26,579		\$31,733		
Projected Per Capita Income (2024)	\$30,235		\$29,269		\$36,787		
Estimated Per Capita Income 5 Year Growth	\$3,962	15.1%	\$2,690	10.1%	\$5,055	15.9%	
Estimated Average Household Net Worth (2019)	\$320,282		\$340,446		\$441,159		
Daytime Demos (2019)							
Total Businesses	106		199		323		
Total Employees	712		1,298		2,262		
Company Headquarter Businesses	-	-	-	-	-	-	
Company Headquarter Employees	-	-	-	-	26	1.2%	
Employee Population per Business	6.7		6.5		7.0		
Residential Population per Business	38.6		43.3		59.6		

EXPANDED PROFILE

2000-2010 Census, 2019 Estimates with 2024 Projections

Calculated using Weighted Block Centroid from Block Groups

Lat/Lon: 39.9539/-84.3252

RF5

689 S Miami St

West Milton, OH 45383

Race & Ethnicity

	1 mi radius		3 mi radius		5 mi radius	
White (2019)	3,957	96.7%	8,276	96.3%	18,117	94.2%
Black or African American (2019)	30	0.7%	106	1.2%	519	2.7%
American Indian or Alaska Native (2019)	4	-	9	0.1%	30	0.2%
Asian (2019)	17	0.4%	50	0.6%	207	1.1%
Hawaiian or Pacific Islander (2019)	-	-	3	-	4	-
Other Race (2019)	9	0.2%	22	0.3%	58	0.3%
Two or More Races (2019)	76	1.8%	128	1.5%	305	1.6%
Not Hispanic or Latino Population (2019)	4,045	98.8%	8,485	98.7%	18,931	98.4%
Hispanic or Latino Population (2019)	48	1.2%	108	1.3%	310	1.6%
Not Hispanic or Latino Population (2024)	4,160	98.8%	8,672	98.7%	18,981	98.3%
Hispanic or Latino Population (2024)	50	1.2%	116	1.3%	325	1.7%
Not Hispanic or Latino Population (2010)	3,971	99.2%	8,374	99.2%	18,630	98.9%
Hispanic or Latino Population (2010)	31	0.8%	71	0.8%	203	1.1%
Not Hispanic or Latino Population (2000)	4,123	99.3%	8,351	99.4%	18,338	99.3%
Hispanic or Latino Population (2000)	28	0.7%	48	0.6%	136	0.7%
Projected Hispanic Annual Growth (2019 to 2024)	2	1.0%	8	1.4%	15	1.0%
Historic Hispanic Annual Growth (2000 to 2019)	20	3.8%	61	6.7%	174	6.7%

Age Distribution (2019)

Age Under 5	248	6.1%	481	5.6%	1,075	5.6%
Age 5 to 9 Years	249	6.1%	505	5.9%	1,168	6.1%
Age 10 to 14 Years	285	7.0%	573	6.7%	1,266	6.6%
Age 15 to 19 Years	245	6.0%	527	6.1%	1,160	6.0%
Age 20 to 24 Years	225	5.5%	450	5.2%	938	4.9%
Age 25 to 29 Years	260	6.4%	479	5.6%	1,073	5.6%
Age 30 to 34 Years	224	5.5%	474	5.5%	1,084	5.6%
Age 35 to 39 Years	252	6.1%	506	5.9%	1,154	6.0%
Age 40 to 44 Years	232	5.7%	492	5.7%	1,127	5.9%
Age 45 to 49 Years	242	5.9%	542	6.3%	1,248	6.5%
Age 50 to 54 Years	239	5.9%	563	6.5%	1,307	6.8%
Age 55 to 59 Years	265	6.5%	612	7.1%	1,442	7.5%
Age 60 to 64 Years	265	6.5%	610	7.1%	1,372	7.1%
Age 65 to 74 Years	492	12.0%	1,079	12.6%	2,376	12.3%
Age 75 to 84 Years	268	6.5%	535	6.2%	1,124	5.8%
Age 85 Years or Over	100	2.4%	167	1.9%	328	1.7%
Median Age	40.3		42.0		42.0	

Gender Age Distribution (2019)

Female Population	2,149	52.5%	4,412	51.3%	9,829	51.1%
Age 0 to 19 Years	517	24.1%	1,032	23.4%	2,314	23.5%
Age 20 to 64 Years	1,128	52.5%	2,395	54.3%	5,426	55.2%
Age 65 Years or Over	503	23.4%	986	22.3%	2,089	21.3%
Female Median Age	42.3		43.3		43.0	
Male Population	1,944	47.5%	4,181	48.7%	9,412	48.9%
Age 0 to 19 Years	510	26.2%	1,054	25.2%	2,356	25.0%
Age 20 to 64 Years	1,077	55.4%	2,333	55.8%	5,318	56.5%
Age 65 Years or Over	357	18.4%	794	19.0%	1,738	18.5%
Male Median Age	38.6		40.9		41.1	

This report was produced using data from private and government sources deemed to be reliable. The information herein is provided without representation or warranty.

EXPANDED PROFILE

2000-2010 Census, 2019 Estimates with 2024 Projections

Calculated using Weighted Block Centroid from Block Groups

Lat/Lon: 39.9539/-84.3252

RF5

689 S Miami St

West Milton, OH 45383

1 mi radius

3 mi radius

5 mi radius

Household Income Distribution (2019)

HH Income \$200,000 or More	5	0.3%	30	0.8%	245	3.0%
HH Income \$150,000 to \$199,999	109	6.1%	179	5.0%	405	5.0%
HH Income \$100,000 to \$149,999	168	9.4%	430	11.9%	1,105	13.7%
HH Income \$75,000 to \$99,999	273	15.3%	700	19.4%	1,603	19.9%
HH Income \$50,000 to \$74,999	347	19.4%	688	19.0%	1,780	22.1%
HH Income \$35,000 to \$49,999	277	15.5%	578	16.0%	1,159	14.4%
HH Income \$25,000 to \$34,999	216	12.1%	431	11.9%	807	10.0%
HH Income \$15,000 to \$24,999	204	11.4%	318	8.8%	557	6.9%
HH Income Under \$15,000	187	10.5%	262	7.3%	375	4.7%
HH Income \$35,000 or More	1,179	66.0%	2,605	72.0%	6,296	78.4%
HH Income \$75,000 or More	556	31.1%	1,339	37.0%	3,358	41.8%

Housing (2019)

Total Housing Units	1,831		3,735		8,330	
Housing Units Occupied	1,787	97.6%	3,616	96.8%	8,035	96.5%
Housing Units Owner-Occupied	1,154	64.6%	2,682	74.2%	6,400	79.6%
Housing Units, Renter-Occupied	633	35.4%	934	25.8%	1,636	20.4%
Housing Units, Vacant	45	2.5%	119	3.3%	295	3.7%

Marital Status (2019)

Never Married	1,007	30.4%	1,819	25.9%	3,855	24.5%
Currently Married	1,415	42.7%	3,557	50.6%	8,843	56.2%
Separated	277	8.4%	427	6.1%	645	4.1%
Widowed	304	9.2%	554	7.9%	982	6.2%
Divorced	308	9.3%	677	9.6%	1,408	8.9%

Household Type (2019)

Population Family	3,381	82.6%	7,329	85.3%	16,455	85.5%
Population Non-Family	712	17.4%	1,264	14.7%	2,770	14.4%
Population Group Quarters	-	-	-	-	16	-
Family Households	1,158	64.8%	2,508	69.4%	5,637	70.2%
Non-Family Households	629	35.2%	1,108	30.6%	2,398	29.8%
Married Couple with Children	284	20.1%	668	18.8%	1,614	18.2%
Average Family Household Size	2.9		2.9		2.9	

Household Size (2019)

1 Person Households	558	31.2%	973	26.9%	2,074	25.8%
2 Person Households	652	36.5%	1,406	38.9%	3,169	39.4%
3 Person Households	250	14.0%	530	14.7%	1,185	14.7%
4 Person Households	195	10.9%	424	11.7%	981	12.2%
5 Person Households	87	4.9%	184	5.1%	417	5.2%
6 or More Person Households	44	2.5%	99	2.7%	210	2.6%

Household Vehicles (2019)

Households with 0 Vehicles Available	91	5.1%	105	2.9%	175	2.2%
Households with 1 Vehicles Available	591	33.1%	1,023	28.3%	2,077	25.8%
Households with 2 or More Vehicles Available	1,105	61.8%	2,488	68.8%	5,783	72.0%
Total Vehicles Available	3,474		7,692		17,322	
Average Vehicles Per Household	1.9		2.1		2.2	

This report was produced using data from private and government sources deemed to be reliable. The information herein is provided without representation or warranty.

EXPANDED PROFILE

2000-2010 Census, 2019 Estimates with 2024 Projections

Calculated using Weighted Block Centroid from Block Groups

Lat/Lon: 39.9539/-84.3252

RF5

689 S Miami St

West Milton, OH 45383

1 mi radius

3 mi radius

5 mi radius

Labor Force (2019)

Estimated Labor Population Age 16 Years or Over	3,259		6,929		15,498	
Estimated Civilian Employed	2,127	65.3%	4,395	63.4%	10,254	66.2%
Estimated Civilian Unemployed	28	0.9%	83	1.2%	228	1.5%
Estimated in Armed Forces	-	-	5	-	17	0.1%
Estimated Not in Labor Force	1,104	33.9%	2,446	35.3%	4,998	32.3%
Unemployment Rate	0.9%		1.2%		1.5%	

Occupation (2019)

Occupation: Population Age 16 Years or Over	2,127		4,395		10,254	
Management, Business, Financial Operations	209	9.8%	443	10.1%	1,210	11.8%
Professional, Related	261	12.3%	799	18.2%	2,104	20.5%
Service	491	23.1%	878	20.0%	1,888	18.4%
Sales, Office	414	19.4%	835	19.0%	2,258	22.0%
Farming, Fishing, Forestry	-	-	2	-	22	0.2%
Construct, Extraction, Maintenance	269	12.7%	447	10.2%	825	8.0%
Production, Transport Material Moving	483	22.7%	992	22.6%	1,947	19.0%
White Collar Workers	883	41.5%	2,076	47.2%	5,572	54.3%
Blue Collar Workers	1,244	58.5%	2,319	52.8%	4,682	45.7%

Consumer Expenditure (2019)

Total Household Expenditure	\$88.59 M		\$185.2 M		\$466.78 M	
Total Non-Retail Expenditure	\$46.66 M	52.7%	\$97.23 M	52.5%	\$244.99 M	52.5%
Total Retail Expenditure	\$41.93 M	47.3%	\$87.97 M	47.5%	\$221.79 M	47.5%
Apparel	\$3.05 M	3.4%	\$6.38 M	3.4%	\$16.16 M	3.5%
Contributions	\$2.76 M	3.1%	\$5.81 M	3.1%	\$14.95 M	3.2%
Education	\$2.33 M	2.6%	\$4.84 M	2.6%	\$12.61 M	2.7%
Entertainment	\$4.9 M	5.5%	\$10.31 M	5.6%	\$26.25 M	5.6%
Food and Beverages	\$13.2 M	14.9%	\$27.54 M	14.9%	\$69.08 M	14.8%
Furnishings and Equipment	\$3.05 M	3.4%	\$6.43 M	3.5%	\$16.35 M	3.5%
Gifts	\$2.01 M	2.3%	\$4.24 M	2.3%	\$11.02 M	2.4%
Health Care	\$7.78 M	8.8%	\$16.31 M	8.8%	\$40.78 M	8.7%
Household Operations	\$3.43 M	3.9%	\$7.17 M	3.9%	\$18.18 M	3.9%
Miscellaneous Expenses	\$1.67 M	1.9%	\$3.49 M	1.9%	\$8.82 M	1.9%
Personal Care	\$1.19 M	1.3%	\$2.49 M	1.3%	\$6.26 M	1.3%
Personal Insurance	\$591.32 K	0.7%	\$1.26 M	0.7%	\$3.24 M	0.7%
Reading	\$193.62 K	0.2%	\$404.88 K	0.2%	\$1.02 M	0.2%
Shelter	\$18.77 M	21.2%	\$38.91 M	21.0%	\$97.55 M	20.9%
Tobacco	\$599.81 K	0.7%	\$1.23 M	0.7%	\$2.96 M	0.6%
Transportation	\$16.19 M	18.3%	\$34.11 M	18.4%	\$86.16 M	18.5%
Utilities	\$6.87 M	7.8%	\$14.28 M	7.7%	\$35.4 M	7.6%

Educational Attainment (2019)

Adult Population Age 25 Years or Over	2,840		6,058		13,634	
Elementary (Grade Level 0 to 8)	26	0.9%	60	1.0%	167	1.2%
Some High School (Grade Level 9 to 11)	417	14.7%	729	12.0%	1,194	8.8%
High School Graduate	1,052	37.1%	2,339	38.6%	4,979	36.5%
Some College	717	25.3%	1,453	24.0%	3,380	24.8%
Associate Degree Only	210	7.4%	506	8.4%	1,355	9.9%
Bachelor Degree Only	293	10.3%	685	11.3%	1,728	12.7%
Graduate Degree	124	4.4%	284	4.7%	832	6.1%

This report was produced using data from private and government sources deemed to be reliable. The information herein is provided without representation or warranty.

EXPANDED PROFILE

2000-2010 Census, 2019 Estimates with 2024 Projections

Calculated using Weighted Block Centroid from Block Groups

Lat/Lon: 39.9539/-84.3252

RF5

689 S Miami St

West Milton, OH 45383

Units In Structure (2019)

	1 mi radius		3 mi radius		5 mi radius	
1 Detached Unit	1,401	81.7%	3,004	86.5%	6,887	90.6%
1 Attached Unit	43	2.5%	153	4.4%	465	6.1%
2 to 4 Units	241	14.1%	281	8.1%	363	4.8%
5 to 9 Units	34	2.0%	39	1.1%	68	0.9%
10 to 19 Units	2	-	4	0.1%	20	0.3%
20 to 49 Units	32	1.9%	46	1.3%	75	1.0%
50 or More Units	-	-	-	-	6	-
Mobile Home or Trailer	33	1.9%	88	2.5%	153	2.0%
Other Structure	-	-	-	-	-	-

Homes Built By Year (2019)

Homes Built 2010 or later	13	0.8%	41	1.2%	129	1.7%
Homes Built 2000 to 2009	52	3.0%	267	7.7%	744	9.8%
Homes Built 1990 to 1999	152	8.9%	348	10.0%	784	10.3%
Homes Built 1980 to 1989	149	8.7%	291	8.4%	686	9.0%
Homes Built 1970 to 1979	329	19.2%	795	22.9%	1,879	24.7%
Homes Built 1960 to 1969	241	14.0%	472	13.6%	1,202	15.8%
Homes Built 1950 to 1959	379	22.1%	567	16.3%	1,021	13.4%
Homes Built Before 1949	471	27.5%	835	24.0%	1,591	20.9%

Home Values (2019)

Home Values \$1,000,000 or More	1	-	2	-	15	0.3%
Home Values \$500,000 to \$999,999	25	2.3%	70	2.7%	128	2.1%
Home Values \$400,000 to \$499,999	41	3.7%	64	2.5%	111	1.8%
Home Values \$300,000 to \$399,999	6	0.5%	49	1.9%	230	3.8%
Home Values \$200,000 to \$299,999	118	10.6%	416	16.2%	971	16.1%
Home Values \$150,000 to \$199,999	225	20.2%	588	22.9%	1,333	22.1%
Home Values \$100,000 to \$149,999	397	35.8%	775	30.1%	1,506	25.0%
Home Values \$70,000 to \$99,999	278	25.0%	564	21.9%	1,498	24.8%
Home Values \$50,000 to \$69,999	37	3.3%	56	2.2%	284	4.7%
Home Values \$25,000 to \$49,999	1	0.1%	17	0.7%	137	2.3%
Home Values Under \$25,000	25	2.2%	78	3.1%	175	2.9%
Owner-Occupied Median Home Value	\$126,007		\$138,385		\$134,703	
Renter-Occupied Median Rent	\$532		\$556		\$614	

Transportation To Work (2019)

Drive to Work Alone	1,656	80.8%	3,614	85.0%	7,938	84.6%
Drive to Work in Carpool	220	10.8%	360	8.5%	813	8.7%
Travel to Work by Public Transportation	-	-	-	-	34	0.4%
Drive to Work on Motorcycle	-	-	-	-	-	-
Walk or Bicycle to Work	74	3.6%	86	2.0%	145	1.5%
Other Means	-	-	3	-	48	0.5%
Work at Home	99	4.8%	186	4.4%	404	4.3%

Travel Time (2019)

Travel to Work in 14 Minutes or Less	423	20.6%	970	22.8%	2,332	24.9%
Travel to Work in 15 to 29 Minutes	1,095	53.4%	1,915	45.1%	4,407	47.0%
Travel to Work in 30 to 59 Minutes	432	21.1%	1,212	28.5%	2,730	29.1%
Travel to Work in 60 Minutes or More	73	3.6%	103	2.4%	349	3.7%
Average Minutes Travel to Work	20.5		22.6		22.4	

This report was produced using data from private and government sources deemed to be reliable. The information herein is provided without representation or warranty.