

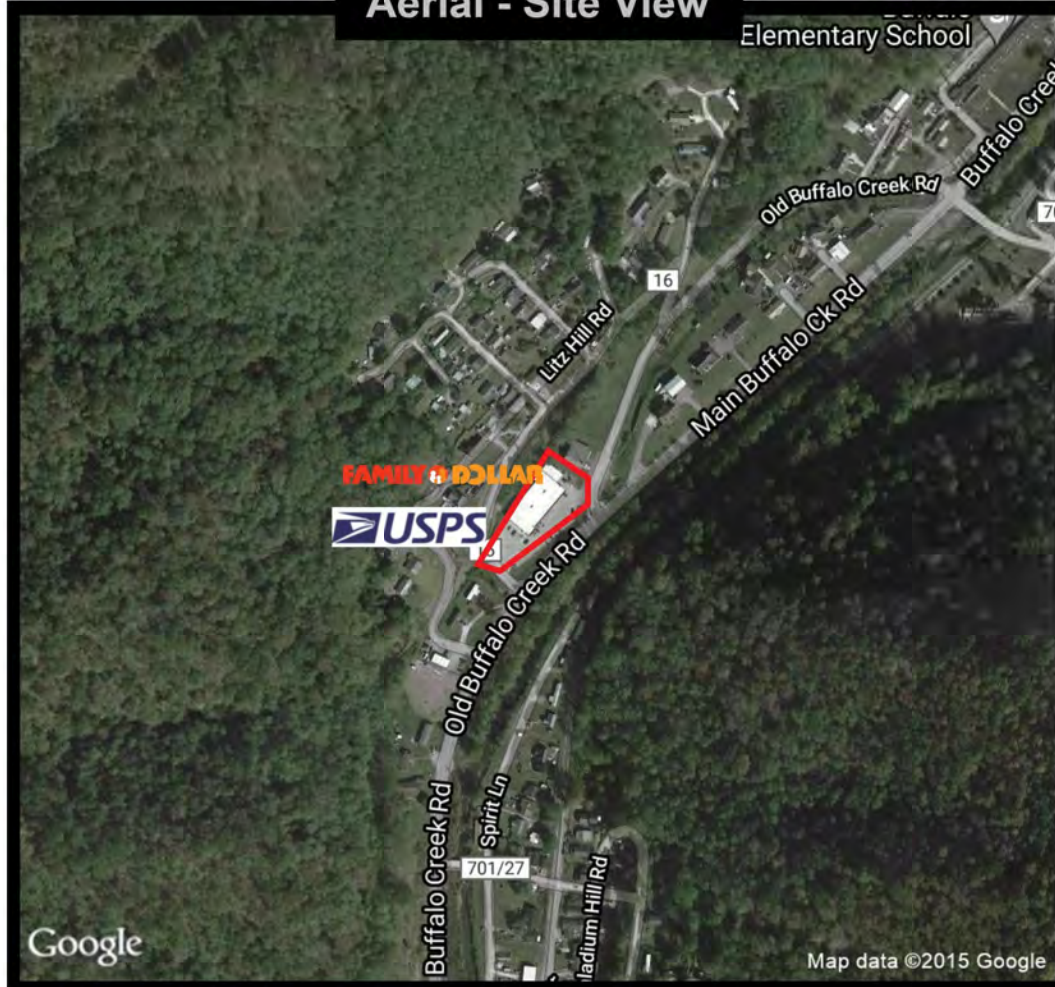
1997 Buffalo Creek Rd
 Accoville, WV 25606

\$7/sf + NNN*

*\$2.25/sf NNN includes but not limited to Real Estate Taxes, Insurance, and CAM (such as parking lot maintenance, snow removal, lawn care, etc.)

RETAIL SPACE FOR LEASE

Aerial - Site View

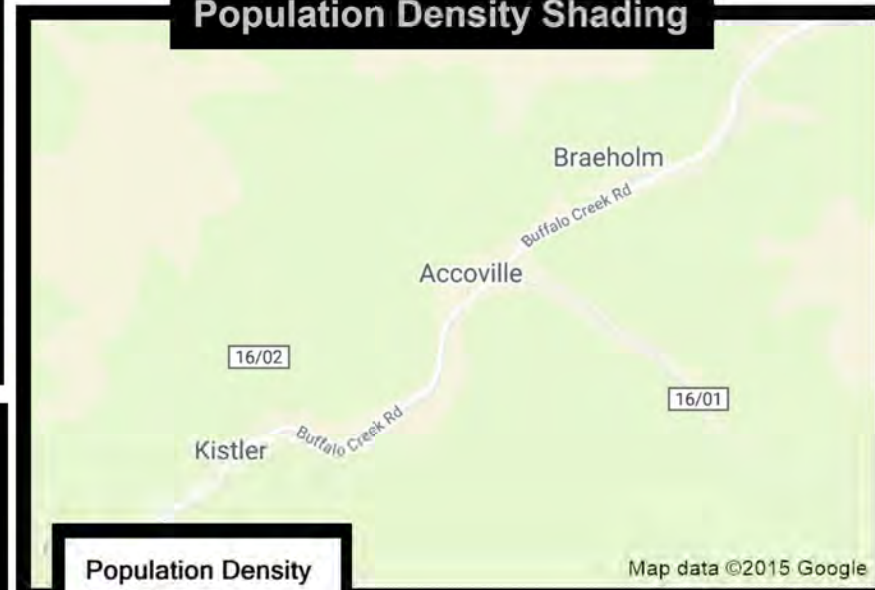


Join Family Dollar & USPS in former Foodland building

7,123 sf available - can be split per tenant needs

Ample parking and tenant pylon sign

Population Density Shading



Demographic Data

	3 mi radius	5 mi radius	10 mi radius
Population (2021)	3,338	4,955	14,577
Households (2021)	1,353	2,005	5,977
Median household income (2021)	\$42,567	\$41,643	\$40,430
Total Employees	426	492	1,859
Total Establishments	60	68	181

Population Density

By Blockgroups

- 7,500 or more
- 5,000 to 7,500
- 2,500 to 5,000
- 1,000 to 2,500
- Less than 1,000

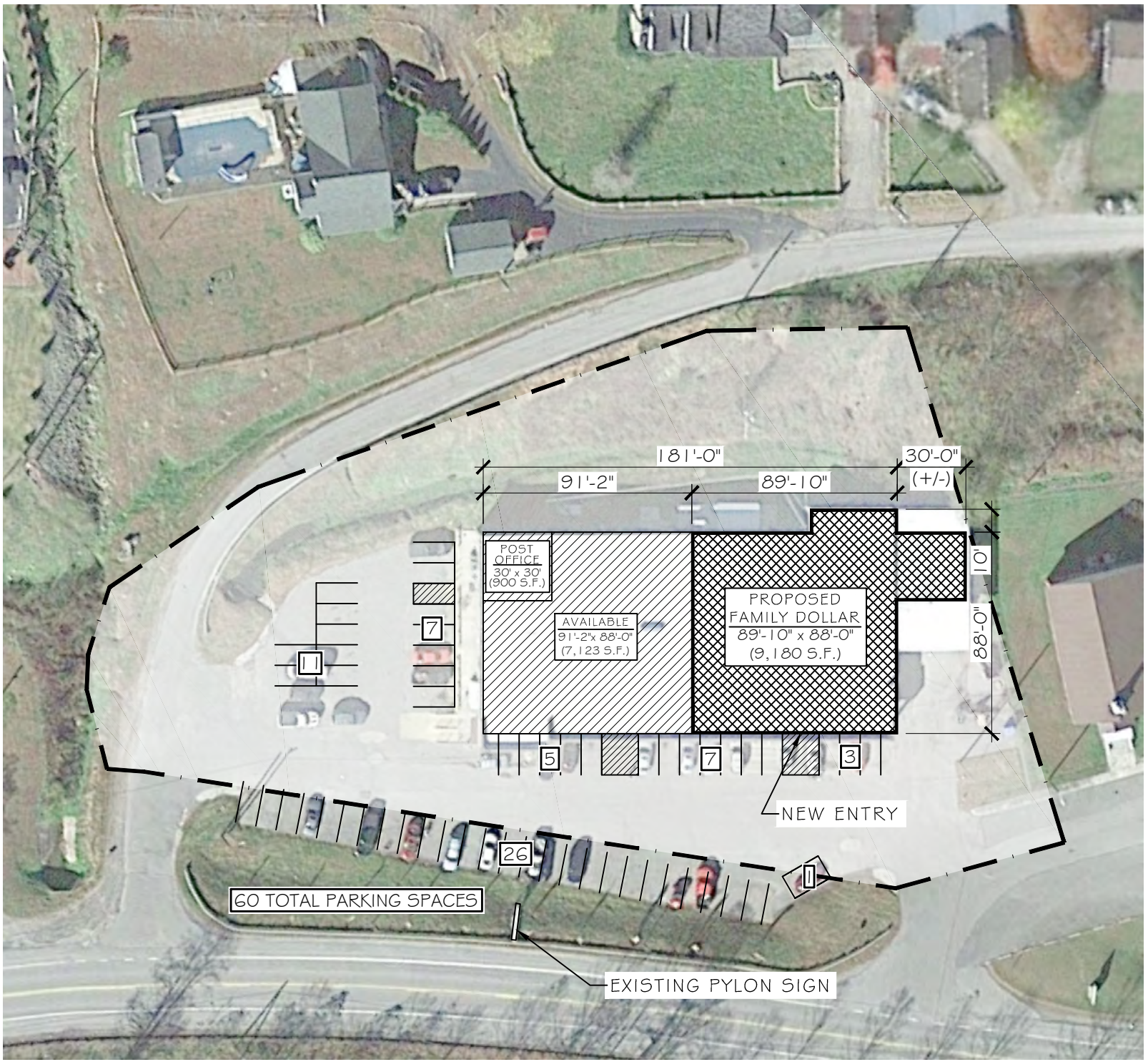
COCCA DEVELOPMENT, LTD

100 DEBARTOLO PLACE SUITE 400 BOARDMAN, OHIO 44512
 (330) 729-1010

WWW.COCCADEVELOPMENT.COM

This map was produced using data from private and government sources deemed to be reliable. The information herein is provided without representation or warranty.

I:\Land Projects\2006 Drawing After C-1\2\Accoville WV Dollar Tree 2020\Drawings\05 Preliminary\20_0207 - Accoville WV (Family D



SCALE: 1" = 60'-0"

ACCOVILLE, WV
 RT. 16 BUFFALO CREEK RD.
 LOGAN COUNTY

SITE PLAN

SITE DATA SUMMARY

DATE PREPARED: 02/07/20

DRAWN BY:

BES

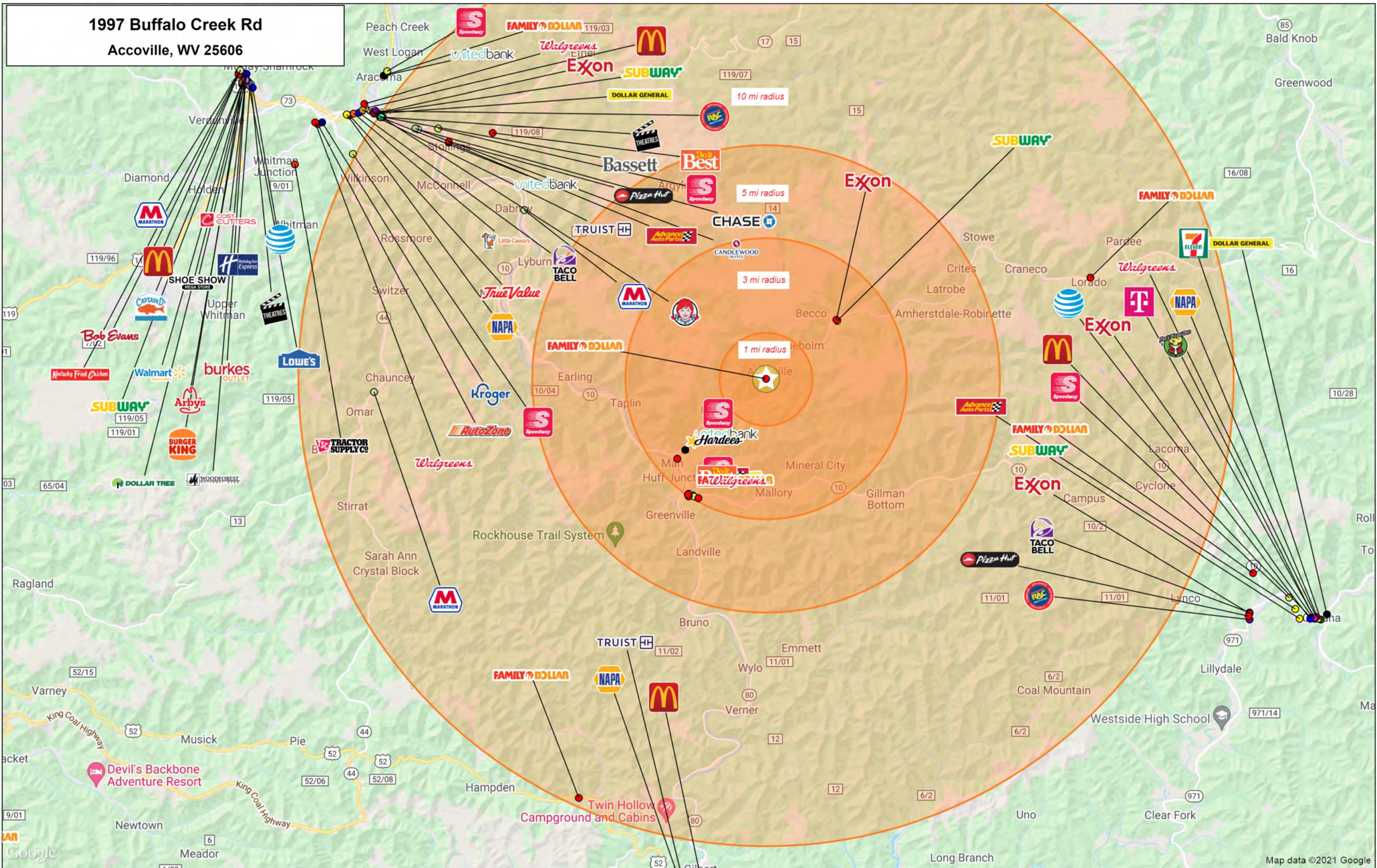
PREPARED FOR:



COCCA
 DEVELOPMENT LTD.

100 DeBARTOLO PLACE, SUITE 400
 BOARDMAN, OH 44512
 PHONE: 330-729-1010
 FAX: 330-729-1008

**1997 Buffalo Creek Rd
Accoville, WV 25606**



This map was produced using data from private and government sources deemed to be reliable. The information herein is provided without representation or warranty.

©2021, SITES USA Inc., Chandler, AZ (480) 491-1112. All Rights Reserved.

Lat: 37.74800 Long: -81.87149 Zoom: 12

Logos are for identification purposes only and may be trademarks of their respective companies.

Map data ©2021 Google

1997 Buffalo Creek Rd
Accoville, WV 25606



1997 Buffalo Creek Rd
Accoville, WV 25606



Google

Map data ©2021 Google

This map was produced using data from private and government sources deemed to be reliable. The information herein is provided without representation or warranty

©2021, SITES USA Inc., Chandler, AZ (480) 491-1112. All Rights Reserved.

Lat: 37.76569 Long: -81.83810 Zoom: 17
Logos are for identification purposes only and may be trademarks of their respective companies.

GRAPHIC PROFILE

2000-2010 Census, 2021 Estimates with 2026 Projections

Calculated using Weighted Block Centroid from Block Groups

Lat/Lon: 37.7661/-81.8411

RGRAP3

1997 Buffalo Creek Rd

Accoville, WV 25606

1 mi radius

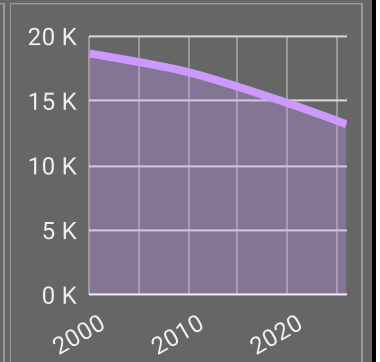
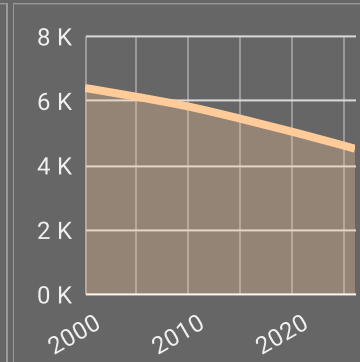
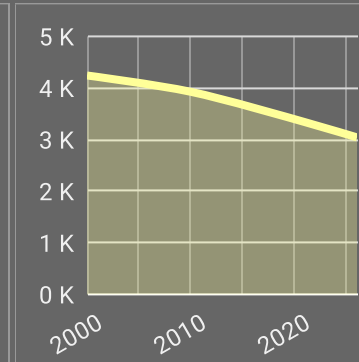
3 mi radius

5 mi radius

10 mi radius

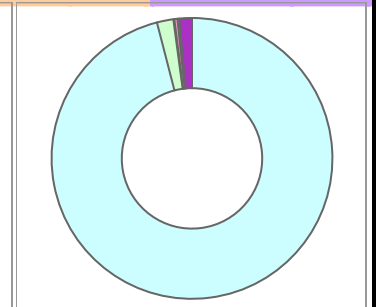
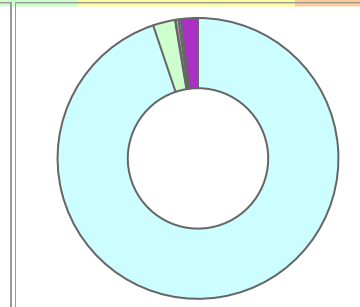
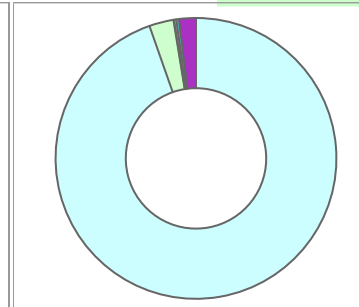
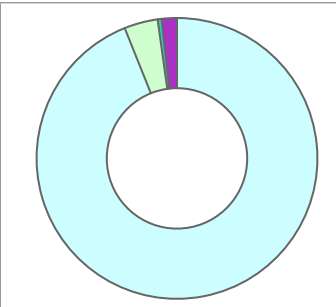
Population

Estimated Population (2021)	908	3,338	4,955	14,577
Projected Population (2026)	826	3,043	4,517	13,184
Census Population (2010)	1,049	3,926	5,823	17,207
Census Population (2000)	1,073	4,242	6,400	18,648
Projected Annual Growth (2021-2026)	-82 -1.8%	-295 -1.8%	-438 -1.8%	-1,393 -1.9%
Historical Annual Growth (2010-2021)	-141 -1.4%	-588 -1.6%	-868 -1.6%	-2,631 -1.6%
Historical Annual Growth (2000-2010)	-24 -0.2%	-316 -0.7%	-577 -0.9%	-1,441 -0.8%
Estimated Population Density (2021)	289 <i>psm</i>	118 <i>psm</i>	63 <i>psm</i>	46 <i>psm</i>
Trade Area Size	3.1 <i>sq mi</i>	28.3 <i>sq mi</i>	78.5 <i>sq mi</i>	314.0 <i>sq mi</i>



Race and Ethnicity (2021)

Not Hispanic or Latino Population	897 98.7%	3,301 98.9%	4,903 99.0%	14,378 98.6%
White	846 94.3%	3,133 94.9%	4,664 95.1%	13,843 96.3%
Black or African American	34 3.8%	92 2.8%	124 2.5%	272 1.9%
American Indian or Alaska Native	- -	2 -	3 -	13 -
Asian	- -	9 0.3%	17 0.3%	51 0.4%
Hawaiian or Pacific Islander	- -	- -	- -	- -
Other Race	- -	- -	- -	3 -
Two or More Races	16 1.8%	65 2.0%	95 1.9%	195 1.4%
Hispanic or Latino Population	12 1.3%	37 1.1%	52 1.0%	199 1.4%
White	6 55.0%	24 63.8%	34 65.0%	147 74.0%
Black or African American	1 9.0%	2 4.8%	2 3.9%	4 2.2%
American Indian or Alaska Native	- -	- -	- -	3 1.5%
Asian	- -	- -	- -	- -
Hispanic Hawaiian or Pacific Islander	- -	- -	- -	- -
Other Race	4 35.6%	10 28.1%	13 25.4%	27 13.6%
Two or More Races	- -	- -	2 3.9%	17 8.3%



White Black or African American American Indian or Alaska Native Asian Hawaiian or Pacific Islander Other Race 2+ Races

This report was produced using data from private and government sources deemed to be reliable. The information herein is provided without representation or warranty.

GRAPHIC PROFILE

2000-2010 Census, 2021 Estimates with 2026 Projections

Calculated using Weighted Block Centroid from Block Groups

Lat/Lon: 37.7661/-81.8411

RGRAP3

1997 Buffalo Creek Rd

Accoville, WV 25606

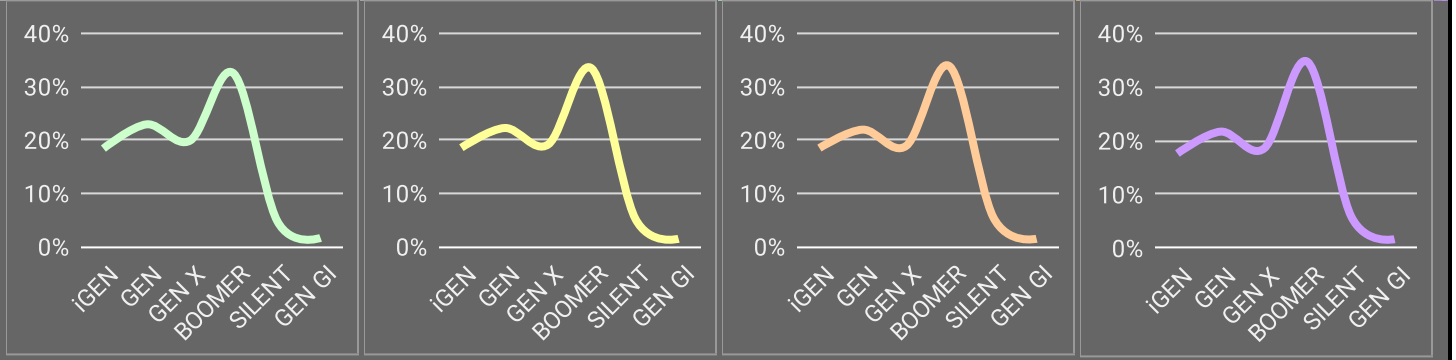
1 mi radius 3 mi radius 5 mi radius 10 mi radius

Age Distribution (2021)

Age Group	1 mi radius	3 mi radius	5 mi radius	10 mi radius
Age Under 5 Years	48 5.3%	184 5.5%	272 5.5%	773 5.3%
Age 5 to 9 Years	56 6.2%	214 6.4%	316 6.4%	888 6.1%
Age 10 to 14 Years	62 6.9%	220 6.6%	325 6.6%	903 6.2%
Age 15 to 19 Years	54 5.9%	190 5.7%	280 5.6%	832 5.7%
Age 20 to 24 Years	49 5.4%	172 5.1%	252 5.1%	749 5.1%
Age 25 to 29 Years	52 5.7%	188 5.6%	276 5.6%	805 5.5%
Age 30 to 34 Years	54 5.9%	191 5.7%	278 5.6%	772 5.3%
Age 35 to 39 Years	51 5.6%	185 5.5%	271 5.5%	802 5.5%
Age 40 to 44 Years	65 7.1%	222 6.7%	322 6.5%	940 6.5%
Age 45 to 49 Years	65 7.1%	232 6.9%	343 6.9%	963 6.6%
Age 50 to 54 Years	58 6.3%	222 6.6%	326 6.6%	975 6.7%
Age 55 to 59 Years	59 6.5%	221 6.6%	326 6.6%	950 6.5%
Age 60 to 64 Years	61 6.8%	233 7.0%	351 7.1%	1,101 7.6%
Age 65 to 69 Years	67 7.4%	256 7.7%	391 7.9%	1,141 7.8%
Age 70 to 74 Years	49 5.4%	182 5.5%	279 5.6%	879 6.0%
Age 75 to 79 Years	28 3.1%	110 3.3%	170 3.4%	538 3.7%
Age 80 to 84 Years	16 1.7%	66 2.0%	105 2.1%	322 2.2%
Age 85 Years or Over	15 1.6%	49 1.5%	72 1.5%	242 1.7%
Median Age	41.2	41.9	42.3	43.1

Generation (2021)

Generation	1 mi radius	3 mi radius	5 mi radius	10 mi radius
iGeneration (Age Under 15 Years)	167 18.4%	618 18.5%	914 18.4%	2,564 17.6%
Generation 9/11 Millennials (Age 15 to 34 Years)	208 22.9%	742 22.2%	1,086 21.9%	3,158 21.7%
Gen Xers (Age 35 to 49 Years)	180 19.9%	639 19.1%	936 18.9%	2,706 18.6%
Baby Boomers (Age 50 to 74 Years)	294 32.4%	1,114 33.4%	1,673 33.8%	5,047 34.6%
Silent Generation (Age 75 to 84 Years)	44 4.8%	176 5.3%	275 5.5%	860 5.9%
G.I. Generation (Age 85 Years or Over)	15 1.6%	49 1.5%	72 1.5%	242 1.7%



This report was produced using data from private and government sources deemed to be reliable. The information herein is provided without representation or warranty.

GRAPHIC PROFILE

2000-2010 Census, 2021 Estimates with 2026 Projections

Calculated using Weighted Block Centroid from Block Groups

Lat/Lon: 37.7661/-81.8411

RGRAP3

1997 Buffalo Creek Rd

Accoville, WV 25606

1 mi radius

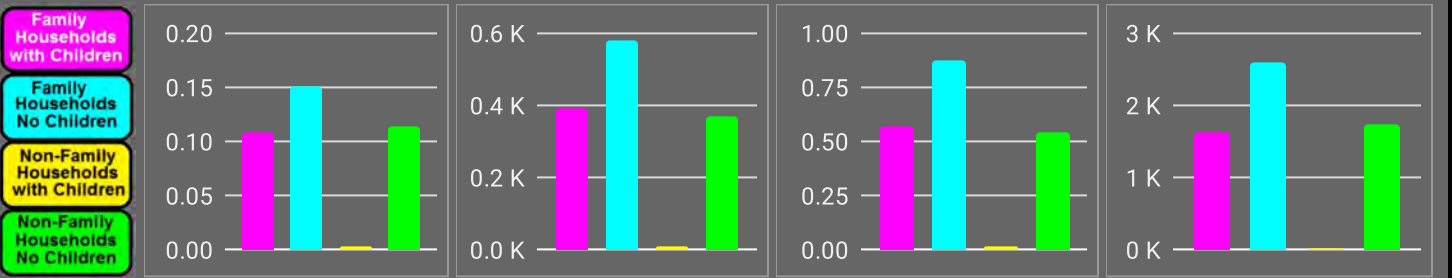
3 mi radius

5 mi radius

10 mi radius

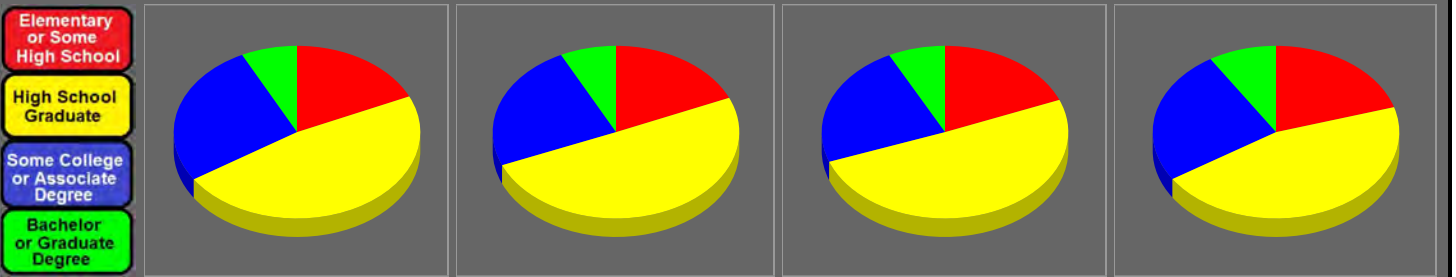
Household Type (2021)

	1 mi radius	3 mi radius	5 mi radius	10 mi radius
Total Households	377	1,353	2,005	5,977
Family Households	260 69.2%	973 71.9%	1,449 72.3%	4,230 70.8%
Family Households with Children	109 41.8%	391 40.2%	574 39.6%	1,628 38.5%
Family Households No Children	152 58.2%	582 59.8%	875 60.4%	2,602 61.5%
Non-Family Households	116 30.8%	381 28.1%	556 27.7%	1,747 29.2%
Non-Family Households with Children	3 2.5%	9 2.5%	13 2.3%	24 1.4%
Non-Family Households No Children	113 97.5%	371 97.5%	543 97.7%	1,723 98.6%



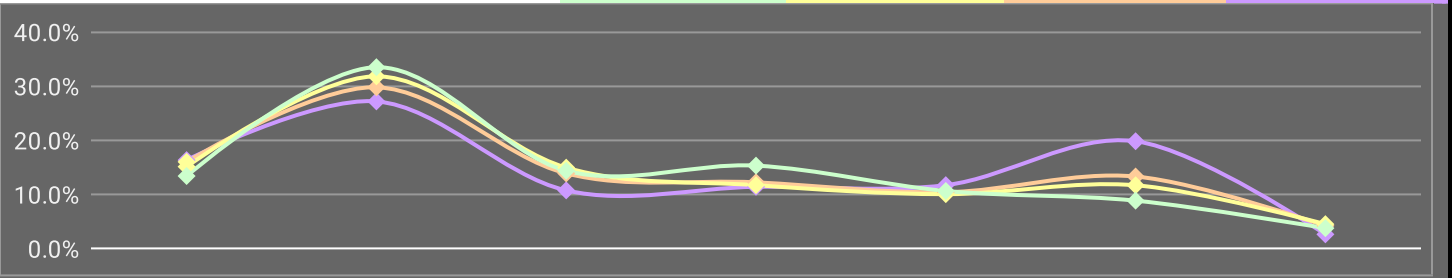
Education Attainment (2021)

	1 mi radius	3 mi radius	5 mi radius	10 mi radius
Elementary or Some High School	116 18.2%	436 18.5%	663 18.9%	2,120 20.3%
High School Graduate	304 47.6%	1,185 50.3%	1,773 50.5%	4,749 45.5%
Some College or Associate Degree	172 26.9%	563 23.9%	811 23.1%	2,631 25.2%
Bachelor or Graduate Degree	47 7.4%	174 7.4%	263 7.5%	931 8.9%



Household Income (2021)

	1 mi radius	3 mi radius	5 mi radius	10 mi radius
Estimated Average Household Income	\$62,886	\$63,280	\$62,343	\$58,028
Estimated Median Household Income	\$45,464	\$42,567	\$41,643	\$40,430
HH Income Under \$10,000	62 16.4%	217 16.0%	304 15.1%	802 13.4%
HH Income \$10,000 to \$34,999	102 27.2%	403 29.8%	638 31.8%	2,003 33.5%
HH Income \$35,000 to \$49,999	41 10.8%	188 13.9%	300 15.0%	861 14.4%
HH Income \$50,000 to \$74,999	43 11.4%	166 12.3%	235 11.7%	917 15.3%
HH Income \$75,000 to \$99,999	44 11.7%	141 10.4%	202 10.1%	637 10.7%
HH Income \$100,000 to \$149,999	75 19.8%	180 13.3%	235 11.7%	530 8.9%
HH Income \$150,000 or More	10 2.7%	57 4.2%	91 4.5%	227 3.8%



This report was produced using data from private and government sources deemed to be reliable. The information herein is provided without representation or warranty.

EXPANDED PROFILE

2000-2010 Census, 2021 Estimates with 2026 Projections

Calculated using Weighted Block Centroid from Block Groups

Lat/Lon: 37.7661/-81.8411

RF5

1997 Buffalo Creek Rd

Accoville, WV 25606

	1 mi radius	3 mi radius	5 mi radius	10 mi radius
Population				
Estimated Population (2021)	908	3,338	4,955	14,577
Projected Population (2026)	826	3,043	4,517	13,184
Census Population (2010)	1,049	3,926	5,823	17,207
Census Population (2000)	1,073	4,242	6,400	18,648
Projected Annual Growth (2021 to 2026)	-82 -1.8%	-295 -1.8%	-438 -1.8%	-1,393 -1.9%
Historical Annual Growth (2010 to 2021)	-141 -1.2%	-588 -1.4%	-868 -1.4%	-2,631 -1.4%
Historical Annual Growth (2000 to 2010)	-24 -0.2%	-316 -0.7%	-577 -0.9%	-1,441 -0.8%
Estimated Population Density (2021)	289 psm	118 psm	63 psm	46 psm
Trade Area Size	3.1 sq mi	28.3 sq mi	78.5 sq mi	314.0 sq mi
Households				
Estimated Households (2021)	377	1,353	2,005	5,977
Projected Households (2026)	350	1,263	1,872	5,531
Census Households (2010)	429	1,570	2,324	6,962
Census Households (2000)	434	1,665	2,502	7,410
Estimated Households with Children (2021)	112 29.7%	400 29.6%	587 29.3%	1,652 27.6%
Estimated Average Household Size (2021)	2.41	2.46	2.46	2.43
Average Household Income				
Estimated Average Household Income (2021)	\$62,886	\$63,280	\$62,343	\$58,028
Projected Average Household Income (2026)	\$48,849	\$60,338	\$63,446	\$78,963
Estimated Average Family Income (2021)	\$75,524	\$74,927	\$73,441	\$66,988
Median Household Income				
Estimated Median Household Income (2021)	\$45,464	\$42,567	\$41,643	\$40,430
Projected Median Household Income (2026)	\$49,686	\$47,854	\$47,132	\$46,233
Estimated Median Family Income (2021)	\$56,851	\$50,111	\$47,654	\$46,363
Per Capita Income				
Estimated Per Capita Income (2021)	\$26,087	\$25,684	\$25,259	\$23,826
Projected Per Capita Income (2026)	\$20,725	\$25,076	\$26,330	\$33,164
Estimated Per Capita Income 5 Year Growth	-\$5,361 -20.6%	-\$608 -2.4%	\$1,071 4.2%	\$9,338 39.2%
Estimated Average Household Net Worth (2021)	\$305,618	\$323,231	\$320,702	\$276,251
Daytime Demos (2021)				
Total Businesses	-	60	68	181
Total Employees	4	426	492	1,859
Company Headquarter Businesses	-	-	-	2 1.2%
Company Headquarter Employees	-	-	-	50 2.7%
Employee Population per Business	6.5	7.1	7.3	10.3
Residential Population per Business	1,482.2	55.5	73.0	80.6

This report was produced using data from private and government sources deemed to be reliable. The information herein is provided without representation or warranty.

EXPANDED PROFILE

2000-2010 Census, 2021 Estimates with 2026 Projections

Calculated using Weighted Block Centroid from Block Groups

Lat/Lon: 37.7661/-81.8411

RF5

1997 Buffalo Creek Rd

Accoville, WV 25606

Race & Ethnicity

	1 mi radius		3 mi radius		5 mi radius		10 mi radius	
White (2021)	852	93.8%	3,157	94.6%	4,698	94.8%	13,990	96.0%
Black or African American (2021)	35	3.9%	94	2.8%	126	2.5%	277	1.9%
American Indian or Alaska Native (2021)	-	-	2	-	4	-	16	0.1%
Asian (2021)	-	-	9	0.3%	17	0.3%	52	0.4%
Hawaiian or Pacific Islander (2021)	-	-	-	-	-	-	-	-
Other Race (2021)	4	0.5%	10	0.3%	13	0.3%	30	0.2%
Two or More Races (2021)	16	1.8%	66	2.0%	97	2.0%	212	1.5%
Not Hispanic or Latino Population (2021)	897	98.7%	3,301	98.9%	4,903	99.0%	14,378	98.6%
Hispanic or Latino Population (2021)	12	1.3%	37	1.1%	52	1.0%	199	1.4%
Not Hispanic or Latino Population (2026)	816	98.8%	3,009	98.9%	4,469	98.9%	13,008	98.7%
Hispanic or Latino Population (2026)	10	1.2%	34	1.1%	48	1.1%	176	1.3%
Not Hispanic or Latino Population (2010)	1,042	99.4%	3,906	99.5%	5,796	99.5%	17,089	99.3%
Hispanic or Latino Population (2010)	7	0.6%	20	0.5%	27	0.5%	118	0.7%
Not Hispanic or Latino Population (2000)	1,069	99.7%	4,223	99.5%	6,368	99.5%	18,529	99.4%
Hispanic or Latino Population (2000)	4	0.3%	20	0.5%	32	0.5%	120	0.6%
Projected Hispanic Annual Growth (2021 to 2026)	-1	-2.3%	-3	-1.6%	-4	-1.4%	-23	-2.3%
Historic Hispanic Annual Growth (2000 to 2021)	8	10.4%	17	4.2%	20	3.0%	79	3.1%

Age Distribution (2021)

Age Under 5	48	5.3%	184	5.5%	272	5.5%	773	5.3%
Age 5 to 9 Years	56	6.2%	214	6.4%	316	6.4%	888	6.1%
Age 10 to 14 Years	62	6.9%	220	6.6%	325	6.6%	903	6.2%
Age 15 to 19 Years	54	5.9%	190	5.7%	280	5.6%	832	5.7%
Age 20 to 24 Years	49	5.4%	172	5.1%	252	5.1%	749	5.1%
Age 25 to 29 Years	52	5.7%	188	5.6%	276	5.6%	805	5.5%
Age 30 to 34 Years	54	5.9%	191	5.7%	278	5.6%	772	5.3%
Age 35 to 39 Years	51	5.6%	185	5.5%	271	5.5%	802	5.5%
Age 40 to 44 Years	65	7.1%	222	6.7%	322	6.5%	940	6.5%
Age 45 to 49 Years	65	7.1%	232	6.9%	343	6.9%	963	6.6%
Age 50 to 54 Years	58	6.3%	222	6.6%	326	6.6%	975	6.7%
Age 55 to 59 Years	59	6.5%	221	6.6%	326	6.6%	950	6.5%
Age 60 to 64 Years	61	6.8%	233	7.0%	351	7.1%	1,101	7.6%
Age 65 to 74 Years	116	12.8%	438	13.1%	670	13.5%	2,021	13.9%
Age 75 to 84 Years	44	4.8%	176	5.3%	275	5.5%	860	5.9%
Age 85 Years or Over	15	1.6%	49	1.5%	72	1.5%	242	1.7%
Median Age	41.2		41.9		42.3		43.1	

Gender Age Distribution (2021)

Female Population	468	51.5%	1,707	51.1%	2,524	50.9%	7,430	51.0%
Age 0 to 19 Years	109	23.3%	396	23.2%	578	22.9%	1,663	22.4%
Age 20 to 64 Years	259	55.3%	935	54.8%	1,376	54.5%	4,016	54.1%
Age 65 Years or Over	100	21.4%	375	22.0%	571	22.6%	1,751	23.6%
Female Median Age	42.1		43.3		43.8		44.6	
Male Population	440	48.5%	1,631	48.9%	2,431	49.1%	7,146	49.0%
Age 0 to 19 Years	111	25.3%	413	25.3%	616	25.3%	1,733	24.3%
Age 20 to 64 Years	254	57.8%	930	57.0%	1,369	56.3%	4,042	56.6%
Age 65 Years or Over	74	16.9%	288	17.7%	446	18.4%	1,371	19.2%
Male Median Age	40.4		40.4		40.6		41.6	

This report was produced using data from private and government sources deemed to be reliable. The information herein is provided without representation or warranty.

EXPANDED PROFILE

2000-2010 Census, 2021 Estimates with 2026 Projections

Calculated using Weighted Block Centroid from Block Groups

Lat/Lon: 37.7661/-81.8411

RF5

1997 Buffalo Creek Rd

Accoville, WV 25606

Household Income Distribution (2021)

	1 mi radius		3 mi radius		5 mi radius		10 mi radius	
HH Income \$200,000 or More	6	1.7%	37	2.8%	55	2.8%	107	1.8%
HH Income \$150,000 to \$199,999	4	1.0%	20	1.5%	36	1.8%	120	2.0%
HH Income \$100,000 to \$149,999	75	19.8%	180	13.3%	235	11.7%	530	8.9%
HH Income \$75,000 to \$99,999	44	11.7%	141	10.4%	202	10.1%	637	10.7%
HH Income \$50,000 to \$74,999	43	11.4%	166	12.3%	235	11.7%	917	15.3%
HH Income \$35,000 to \$49,999	41	10.8%	188	13.9%	300	15.0%	861	14.4%
HH Income \$25,000 to \$34,999	34	9.1%	140	10.3%	231	11.5%	792	13.2%
HH Income \$15,000 to \$24,999	34	9.1%	135	10.0%	217	10.8%	663	11.1%
HH Income Under \$15,000	96	25.4%	346	25.5%	494	24.7%	1,351	22.6%
HH Income \$35,000 or More	213	56.4%	733	54.2%	1,063	53.0%	3,172	53.1%
HH Income \$75,000 or More	129	34.2%	379	28.0%	528	26.3%	1,394	23.3%

Housing (2021)

	1 mi radius		3 mi radius		5 mi radius		10 mi radius	
Total Housing Units	482		1,722		2,549		7,808	
Housing Units Occupied	377	78.1%	1,353	78.6%	2,005	78.7%	5,977	76.6%
Housing Units Owner-Occupied	243	64.6%	976	72.1%	1,472	73.4%	4,443	74.3%
Housing Units, Renter-Occupied	133	35.4%	378	27.9%	533	26.6%	1,535	25.7%
Housing Units, Vacant	106	28.1%	368	27.2%	544	27.1%	1,831	30.6%

Marital Status (2021)

	1 mi radius		3 mi radius		5 mi radius		10 mi radius	
Never Married	218	29.4%	725	26.6%	1,059	26.2%	2,915	24.3%
Currently Married	370	50.0%	1,429	52.5%	2,137	52.9%	6,384	53.1%
Separated	9	1.2%	67	2.5%	108	2.7%	282	2.3%
Widowed	82	11.0%	255	9.4%	375	9.3%	1,055	8.8%
Divorced	62	8.4%	244	9.0%	361	8.9%	1,377	11.5%

Household Type (2021)

	1 mi radius		3 mi radius		5 mi radius		10 mi radius	
Population Family	769	84.7%	2,880	86.3%	4,286	86.5%	12,502	85.8%
Population Non-Family	138	15.2%	447	13.4%	649	13.1%	1,994	13.7%
Population Group Quarters	1	0.1%	11	0.3%	20	0.4%	80	0.5%
Family Households	260	69.2%	973	71.9%	1,449	72.3%	4,230	70.8%
Non-Family Households	116	30.8%	381	28.1%	556	27.7%	1,747	29.2%
Married Couple with Children	66	17.7%	254	17.8%	378	17.7%	1,091	17.1%
Average Family Household Size	3.0		3.0		3.0		3.0	

Household Size (2021)

	1 mi radius		3 mi radius		5 mi radius		10 mi radius	
1 Person Households	101	26.8%	333	24.6%	486	24.2%	1,558	26.1%
2 Person Households	133	35.4%	486	35.9%	730	36.4%	2,143	35.8%
3 Person Households	74	19.8%	268	19.8%	391	19.5%	1,103	18.5%
4 Person Households	39	10.4%	162	12.0%	244	12.2%	727	12.2%
5 Person Households	18	4.8%	69	5.1%	102	5.1%	288	4.8%
6 or More Person Households	11	2.8%	36	2.6%	53	2.6%	159	2.7%

Household Vehicles (2021)

	1 mi radius		3 mi radius		5 mi radius		10 mi radius	
Households with 0 Vehicles Available	42	11.3%	175	12.9%	268	13.4%	742	12.4%
Households with 1 Vehicles Available	137	36.4%	496	36.6%	734	36.6%	2,231	37.3%
Households with 2 or More Vehicles Available	197	52.3%	682	50.4%	1,003	50.0%	3,004	50.3%
Total Vehicles Available	582		2,103		3,108		9,509	
Average Vehicles Per Household	1.5		1.6		1.6		1.6	

This report was produced using data from private and government sources deemed to be reliable. The information herein is provided without representation or warranty.

EXPANDED PROFILE

2000-2010 Census, 2021 Estimates with 2026 Projections

Calculated using Weighted Block Centroid from Block Groups

Lat/Lon: 37.7661/-81.8411

RF5

1997 Buffalo Creek Rd

Accoville, WV 25606

Labor Force (2021)

	1 mi radius		3 mi radius		5 mi radius		10 mi radius	
Estimated Labor Population Age 16 Years or Over	726		2,676		3,982		11,843	
Estimated Civilian Employed	279	38.4%	934	34.9%	1,353	34.0%	4,159	35.1%
Estimated Civilian Unemployed	22	3.0%	81	3.0%	112	2.8%	415	3.5%
Estimated in Armed Forces	-	-	-	-	-	-	-	-
Estimated Not in Labor Force	426	58.6%	1,661	62.1%	2,516	63.2%	7,269	61.4%
Unemployment Rate	3.0%		3.0%		2.8%		3.5%	

Occupation (2021)

	1 mi radius		3 mi radius		5 mi radius		10 mi radius	
Occupation: Population Age 16 Years or Over	279		934		1,353		4,159	
Management, Business, Financial Operations	19	6.8%	73	7.8%	121	8.9%	385	9.3%
Professional, Related	61	21.7%	193	20.6%	264	19.5%	732	17.6%
Service	53	19.0%	199	21.3%	298	22.0%	807	19.4%
Sales, Office	42	15.2%	139	14.9%	203	15.0%	939	22.6%
Farming, Fishing, Forestry	-	-	-	-	-	-	7	0.2%
Construct, Extraction, Maintenance	66	23.7%	196	21.0%	265	19.6%	702	16.9%
Production, Transport Material Moving	38	13.5%	134	14.4%	201	14.8%	587	14.1%
White Collar Workers	122	43.7%	405	43.3%	589	43.5%	2,056	49.4%
Blue Collar Workers	157	56.3%	529	56.7%	765	56.5%	2,103	50.6%

Consumer Expenditure (2021)

	1 mi radius		3 mi radius		5 mi radius		10 mi radius	
Total Household Expenditure	\$19.26 M		\$69.31 M		\$101.5 M		\$288.1 M	
Total Non-Retail Expenditure	\$10.15 M	52.7%	\$36.59 M	52.8%	\$53.61 M	52.8%	\$152.12 M	52.8%
Total Retail Expenditure	\$9.11 M	47.3%	\$32.72 M	47.2%	\$47.89 M	47.2%	\$135.98 M	47.2%
Apparel	\$665.71 K	3.5%	\$2.4 M	3.5%	\$3.51 M	3.5%	\$9.91 M	3.4%
Contributions	\$593.08 K	3.1%	\$2.16 M	3.1%	\$3.17 M	3.1%	\$8.95 M	3.1%
Education	\$537.02 K	2.8%	\$1.95 M	2.8%	\$2.85 M	2.8%	\$7.88 M	2.7%
Entertainment	\$1.06 M	5.5%	\$3.82 M	5.5%	\$5.59 M	5.5%	\$15.82 M	5.5%
Food and Beverages	\$2.88 M	15.0%	\$10.36 M	14.9%	\$15.16 M	14.9%	\$43.06 M	14.9%
Furnishings and Equipment	\$663.2 K	3.4%	\$2.38 M	3.4%	\$3.49 M	3.4%	\$9.85 M	3.4%
Gifts	\$455.1 K	2.4%	\$1.63 M	2.4%	\$2.38 M	2.3%	\$6.63 M	2.3%
Health Care	\$1.68 M	8.7%	\$6.05 M	8.7%	\$8.88 M	8.8%	\$25.41 M	8.8%
Household Operations	\$743.48 K	3.9%	\$2.69 M	3.9%	\$3.95 M	3.9%	\$11.19 M	3.9%
Miscellaneous Expenses	\$362.57 K	1.9%	\$1.31 M	1.9%	\$1.91 M	1.9%	\$5.42 M	1.9%
Personal Care	\$260.03 K	1.4%	\$932.31 K	1.3%	\$1.36 M	1.3%	\$3.87 M	1.3%
Personal Insurance	\$128.5 K	0.7%	\$464.65 K	0.7%	\$681.19 K	0.7%	\$1.91 M	0.7%
Reading	\$41.62 K	0.2%	\$150.54 K	0.2%	\$220.96 K	0.2%	\$628.27 K	0.2%
Shelter	\$4.08 M	21.2%	\$14.66 M	21.2%	\$21.47 M	21.2%	\$60.94 M	21.2%
Tobacco	\$131.5 K	0.7%	\$474.62 K	0.7%	\$696.47 K	0.7%	\$2.01 M	0.7%
Transportation	\$3.49 M	18.1%	\$12.5 M	18.0%	\$18.28 M	18.0%	\$51.97 M	18.0%
Utilities	\$1.49 M	7.7%	\$5.39 M	7.8%	\$7.9 M	7.8%	\$22.63 M	7.9%

Educational Attainment (2021)

	1 mi radius		3 mi radius		5 mi radius		10 mi radius	
Adult Population Age 25 Years or Over	639		2,357		3,509		10,431	
Elementary (Grade Level 0 to 8)	44	6.9%	145	6.2%	219	6.3%	735	7.0%
Some High School (Grade Level 9 to 11)	72	11.3%	290	12.3%	444	12.7%	1,385	13.3%
High School Graduate	304	47.6%	1,185	50.3%	1,773	50.5%	4,749	45.5%
Some College	135	21.2%	427	18.1%	610	17.4%	1,851	17.7%
Associate Degree Only	36	5.7%	136	5.8%	201	5.7%	780	7.5%
Bachelor Degree Only	19	3.0%	71	3.0%	106	3.0%	537	5.2%
Graduate Degree	28	4.4%	102	4.3%	157	4.5%	394	3.8%

This report was produced using data from private and government sources deemed to be reliable. The information herein is provided without representation or warranty.

EXPANDED PROFILE

2000-2010 Census, 2021 Estimates with 2026 Projections

Calculated using Weighted Block Centroid from Block Groups

Lat/Lon: 37.7661/-81.8411

RF5

1997 Buffalo Creek Rd

Accoville, WV 25606

Units In Structure (2021)

	1 mi radius		3 mi radius		5 mi radius		10 mi radius	
1 Detached Unit	268	62.4%	967	61.6%	1,447	62.3%	4,091	58.8%
1 Attached Unit	1	0.3%	5	0.3%	8	0.4%	70	1.0%
2 to 4 Units	5	1.1%	18	1.1%	27	1.2%	135	1.9%
5 to 9 Units	8	1.9%	23	1.5%	35	1.5%	121	1.7%
10 to 19 Units	5	1.2%	9	0.6%	10	0.4%	27	0.4%
20 to 49 Units	4	1.0%	9	0.5%	10	0.4%	61	0.9%
50 or More Units	7	1.6%	17	1.1%	24	1.0%	37	0.5%
Mobile Home or Trailer	78	18.2%	298	19.0%	425	18.3%	1,411	20.3%
Other Structure	-	-	7	0.5%	17	0.7%	23	0.3%

Homes Built By Year (2021)

Homes Built 2010 or later	6	1.3%	36	2.3%	54	2.3%	126	1.8%
Homes Built 2000 to 2009	61	14.1%	174	11.1%	246	10.6%	603	8.7%
Homes Built 1990 to 1999	48	11.1%	184	11.7%	266	11.5%	846	12.2%
Homes Built 1980 to 1989	33	7.7%	155	9.9%	222	9.6%	712	10.2%
Homes Built 1970 to 1979	77	17.9%	254	16.2%	368	15.8%	1,017	14.6%
Homes Built 1960 to 1969	54	12.5%	140	8.9%	196	8.4%	459	6.6%
Homes Built 1950 to 1959	32	7.6%	150	9.5%	243	10.4%	617	8.9%
Homes Built Before 1949	66	15.5%	259	16.5%	411	17.7%	1,597	22.9%

Home Values (2021)

Home Values \$1,000,000 or More	-	-	-	-	-	-	-	-
Home Values \$500,000 to \$999,999	-	-	-	-	-	-	5	0.1%
Home Values \$400,000 to \$499,999	-	-	-	-	-	-	-	-
Home Values \$300,000 to \$399,999	13	5.3%	43	4.4%	72	4.9%	86	1.9%
Home Values \$200,000 to \$299,999	3	1.4%	34	3.5%	61	4.1%	274	6.2%
Home Values \$150,000 to \$199,999	25	10.4%	97	9.9%	140	9.5%	444	10.0%
Home Values \$100,000 to \$149,999	53	21.9%	228	23.4%	353	23.9%	746	16.8%
Home Values \$70,000 to \$99,999	78	32.1%	241	24.7%	324	22.0%	920	20.7%
Home Values \$50,000 to \$69,999	35	14.3%	149	15.3%	241	16.4%	742	16.7%
Home Values \$25,000 to \$49,999	21	8.6%	100	10.3%	149	10.1%	604	13.6%
Home Values Under \$25,000	15	6.0%	84	8.6%	132	8.9%	623	14.0%
Owner-Occupied Median Home Value	\$88,206		\$91,605		\$92,910		\$78,083	
Renter-Occupied Median Rent	\$476		\$454		\$445		\$424	

Transportation To Work (2021)

Drive to Work Alone	233	86.3%	848	85.6%	1,257	85.6%	3,650	85.4%
Drive to Work in Carpool	25	9.4%	105	10.6%	158	10.7%	422	9.9%
Travel to Work by Public Transportation	1	0.5%	4	0.4%	8	0.5%	24	0.6%
Drive to Work on Motorcycle	-	-	-	-	-	-	-	-
Walk or Bicycle to Work	10	3.8%	27	2.7%	34	2.3%	113	2.6%
Other Means	-	-	-	-	-	-	9	0.2%
Work at Home	-	-	7	0.7%	13	0.9%	54	1.3%

Travel Time (2021)

Travel to Work in 14 Minutes or Less	92	34.1%	293	29.6%	431	29.3%	1,402	32.8%
Travel to Work in 15 to 29 Minutes	110	40.7%	307	31.0%	419	28.5%	1,312	30.7%
Travel to Work in 30 to 59 Minutes	44	16.4%	191	19.3%	284	19.4%	832	19.5%
Travel to Work in 60 Minutes or More	32	11.7%	134	13.5%	202	13.8%	560	13.1%
Average Minutes Travel to Work	19.9		23.3		23.5		23.1	

This report was produced using data from private and government sources deemed to be reliable. The information herein is provided without representation or warranty.