

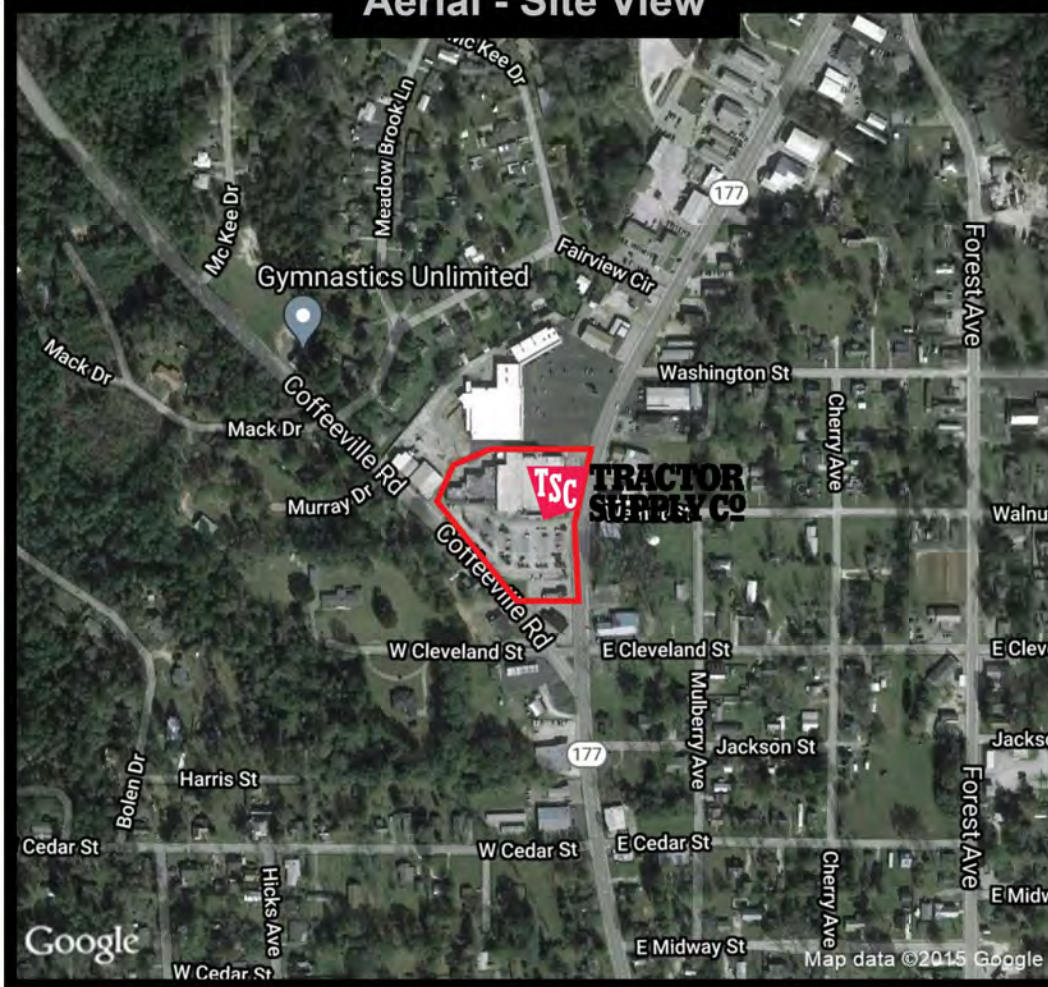
1011 College Ave  
Jackson, AL 36545

**\$8/sf + NNN\***

\*\$1.50/sf NNN includes but not limited to Real Estate Taxes, Insurance, and CAM (such as parking lot maintenance, snow removal, lawn care, etc.)

**RETAIL SPACE FOR LEASE**

**Aerial - Site View**



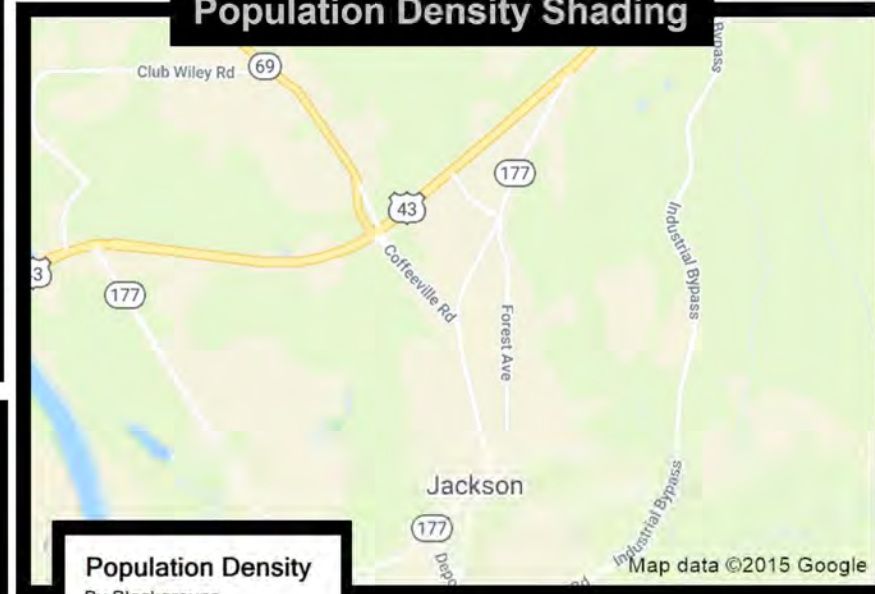
**Join Tractor Supply and Hair Bazaar**

Space available from 651 sf to 18,847 sf

Multiple units can be combined as needed to demise for prospective tenant

Large parking lot and tenant pylon sign

**Population Density Shading**



**Demographic Data**

	3 mi radius	5 mi radius	10 mi radius
Population (2021)	4,923	6,497	11,017
Households (2021)	2,004	2,637	4,439
Median household income (2021)	\$42,641	\$44,149	\$43,469
Total Employees	3,305	4,017	4,157
Total Establishments	267	318	348

**Population Density**

By Blockgroups

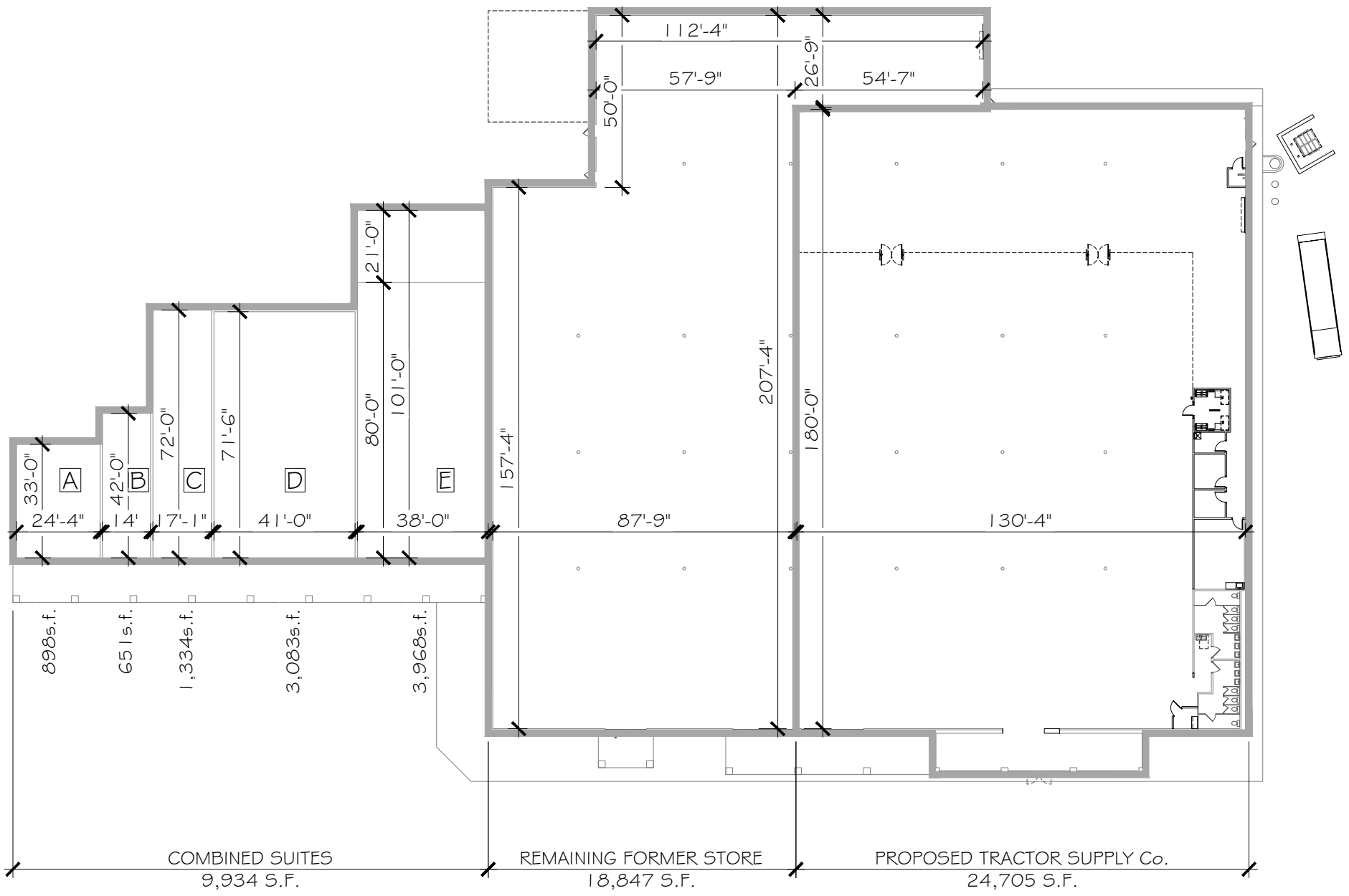
- 7,500 or more
- 5,000 to 7,500
- 2,500 to 5,000
- 1,000 to 2,500
- Less than 1,000

**COCCA DEVELOPMENT, LTD**

100 DEBAROLO PLACE SUITE 400 BOARDMAN, OHIO 44512  
(330) 729-1010

[WWW.COCCADEVELOPMENT.COM](http://WWW.COCCADEVELOPMENT.COM)

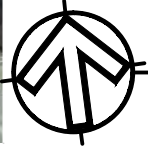
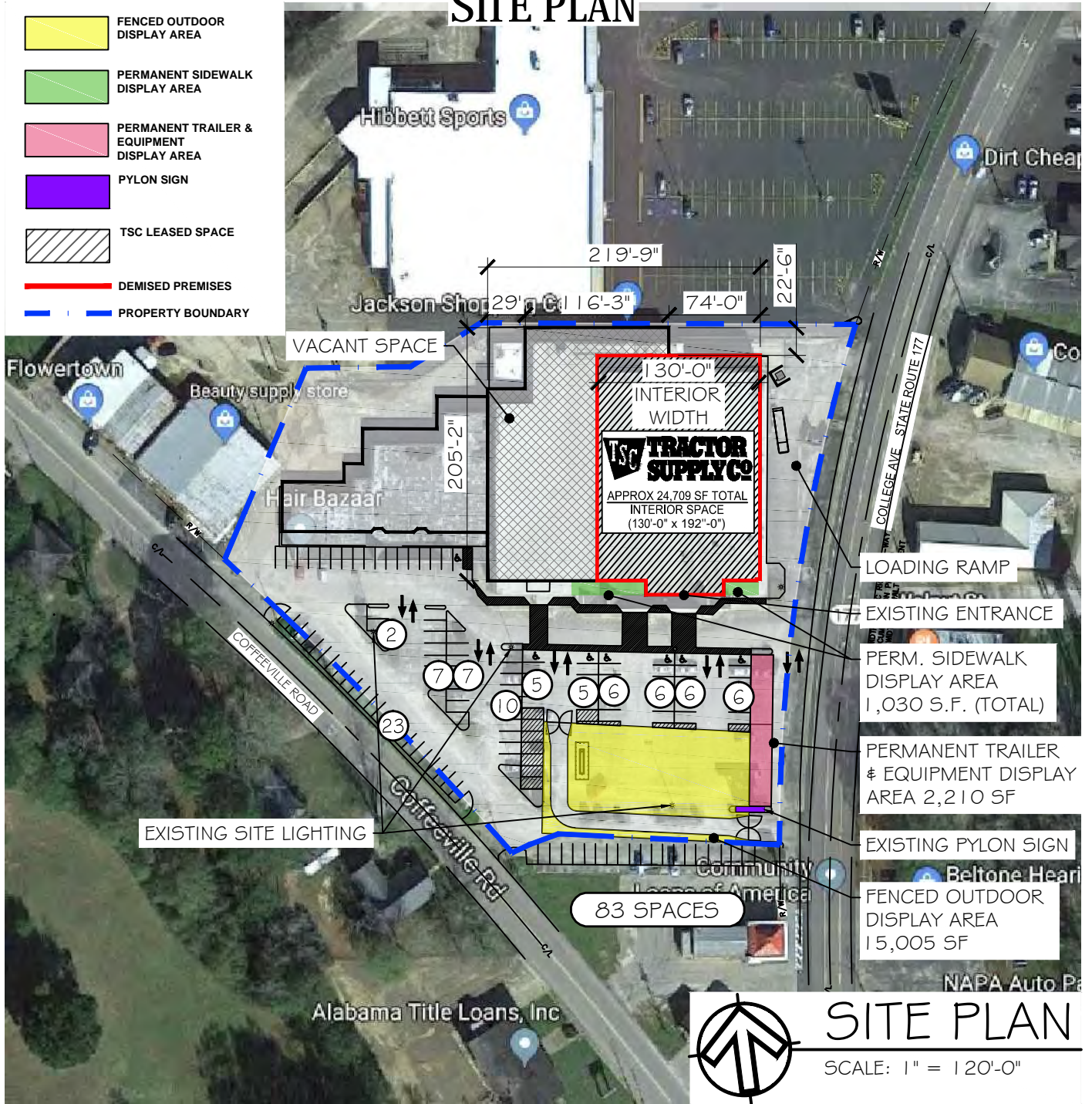
This map was produced using data from private and government sources deemed to be reliable.





# SITE PLAN

- FENCED OUTDOOR DISPLAY AREA
- PERMANENT SIDEWALK DISPLAY AREA
- PERMANENT TRAILER & EQUIPMENT DISPLAY AREA
- PYLON SIGN
- TSC LEASED SPACE
- DEMISED PREMISES
- PROPERTY BOUNDARY



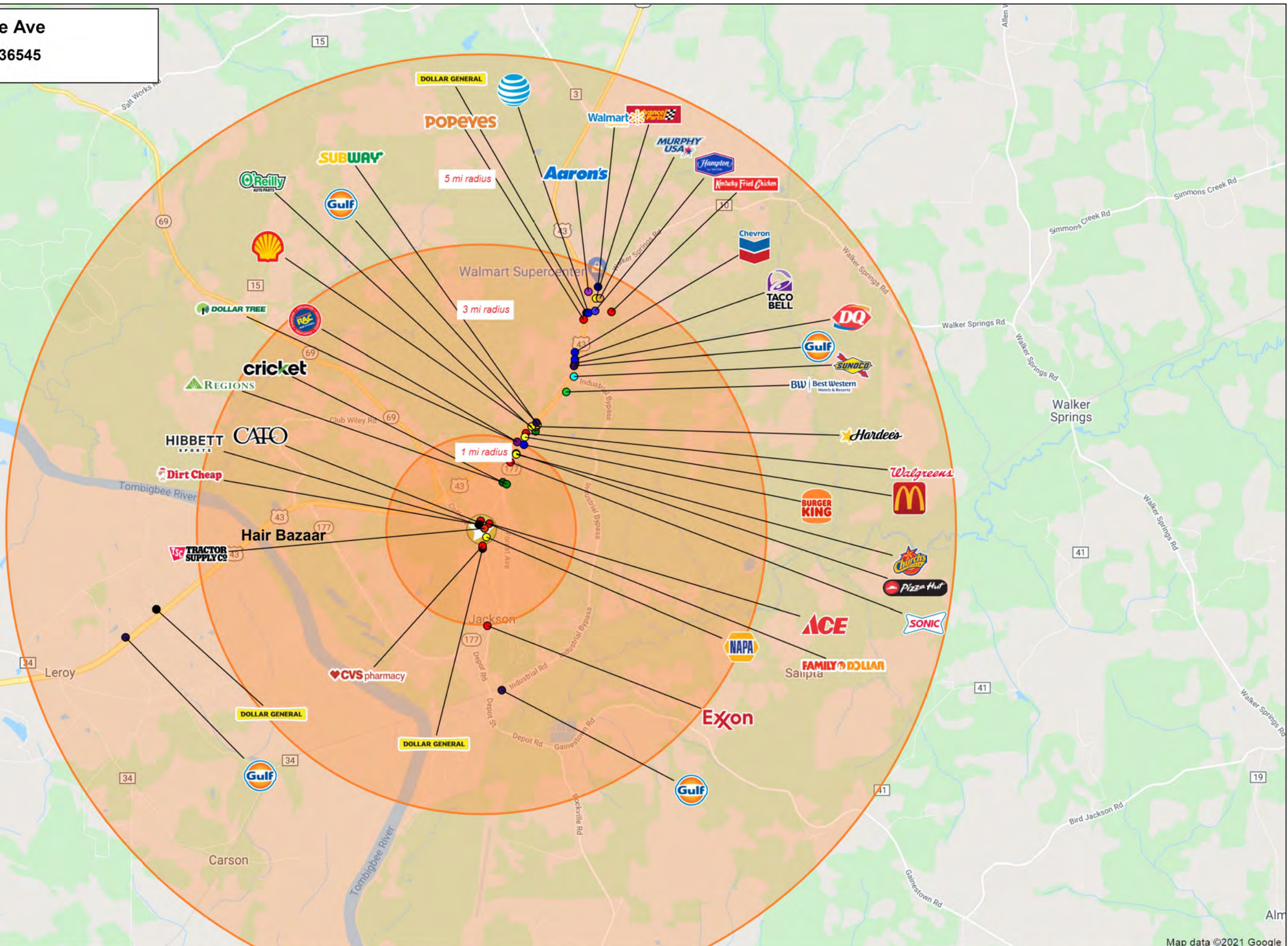
## SITE PLAN

SCALE: 1" = 120'-0"

COLOR CODED SITE PLAN		SITE LOCATION:	
		1011 COLLEGE AVE JACKSON, ALABAMA 36545 CLARKE COUNTY	
TENANT: TRACTOR SUPPLY CO.		DEVELOPER	DESIGNER
TSC BLDG AREA:	24,709 SF	COMPANY: COCCA DEVELOPMENT	COMPANY: COCCA DEVELOPMENT
FENCED AREA SIZE:	15,005 SF	NAME: ANTHONY COCCA	NAME: BILL SCHROEDER
TRAILER DISPLAY:	2,210 SF	PHONE #: 330-729-1010	PHONE #: 330-729-1010
SIDEWALK DISPLAY:	1,030 SF	TSC- S.F. AREA	
ACREAGE:	3.7 ACRES		
PARKING SPACES (CARS):	83(TOTAL)	SALES AREA	17,208 S.F.
		RECEIVING / STOCK	6,038 S.F.
		CORE AREA	1,463 S.F.
		GROSS SQUARE FOOTAGE:	24,709 S.F.
			DATE:
			1/07/20
			1/09/20
			1/27/20
			1/29/20
			1/30/20
			7/28/20

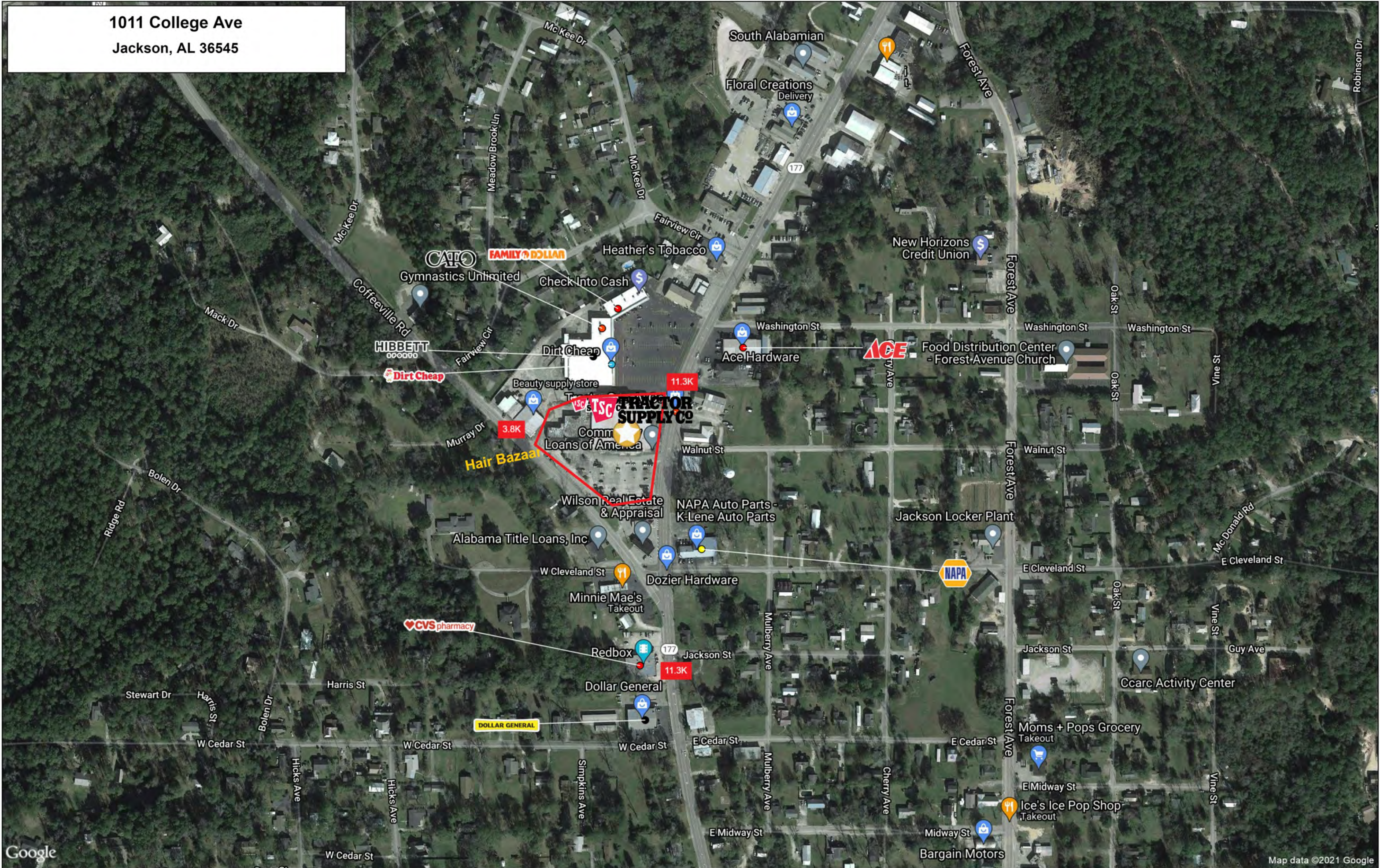


1011 College Ave  
Jackson, AL 36545





1011 College Ave  
Jackson, AL 36545



Google

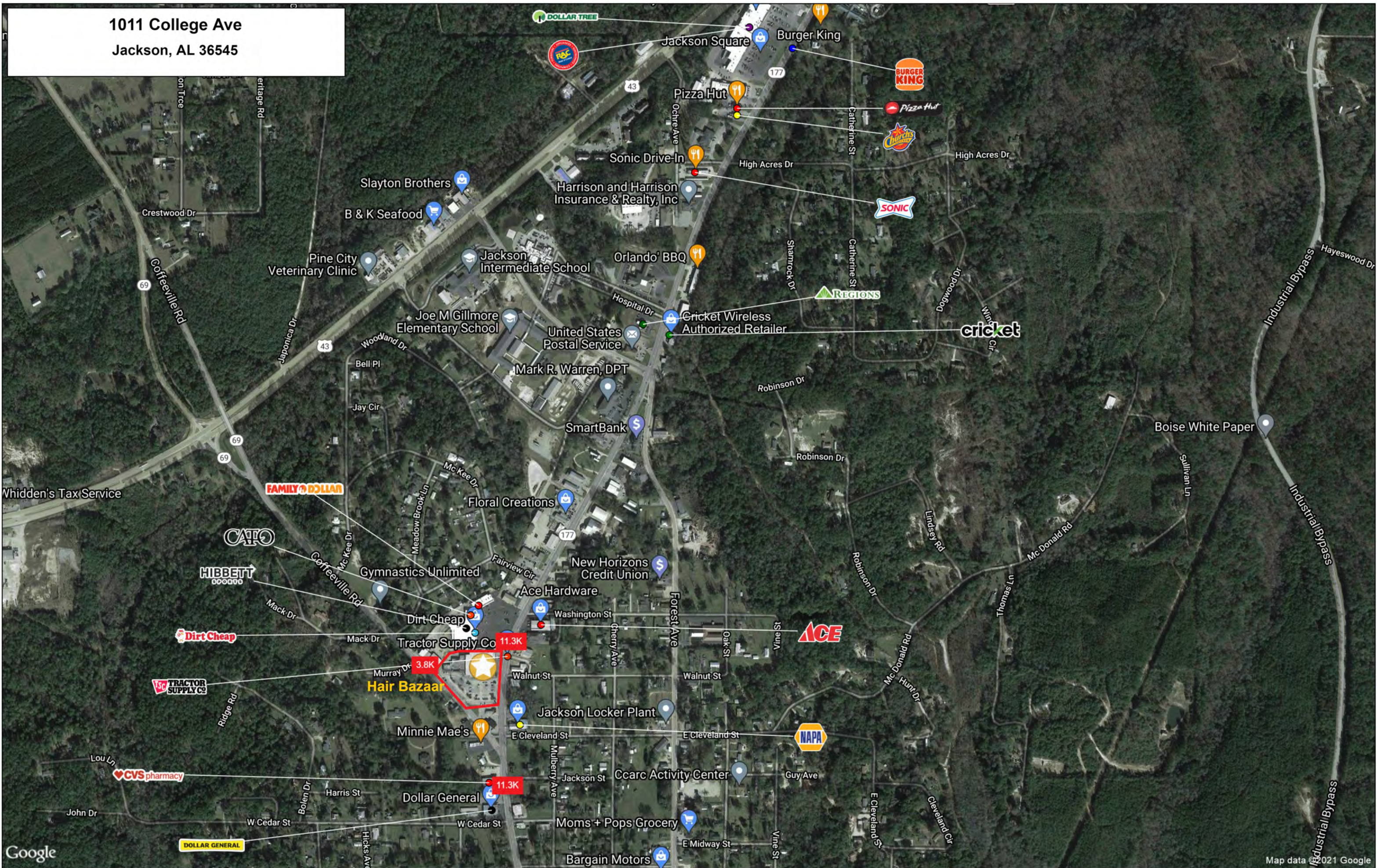
This map was produced using data from private and government sources deemed to be reliable. The information herein is provided without representation or warranty

Map data ©2021 Google  
©2021, SITES USA Inc., Chandler, AZ (480) 491-1112. All Rights Reserved.

Lat: 31.52253 Long: -87.89555 Zoom: 17  
Logos are for identification purposes only and may be trademarks of their respective companies.



1011 College Ave  
Jackson, AL 36545



Google

Map data © 2021 Google

This map was produced using data from private and government sources deemed to be reliable. The information herein is provided without representation or warranty

©2021, SITES USA Inc., Chandler, AZ (480) 491-1112. All Rights Reserved.

Lat: 31.52736 Long: -87.89131 Zoom: 16

Logos are for identification purposes only and may be trademarks of their respective companies.



# GRAPHIC PROFILE

2000-2010 Census, 2021 Estimates with 2026 Projections

Calculated using Weighted Block Centroid from Block Groups

Lat/Lon: 31.5226/-87.8963

RGRAP3

## 1011 College Ave

Jackson, AL 36545

1 mi radius

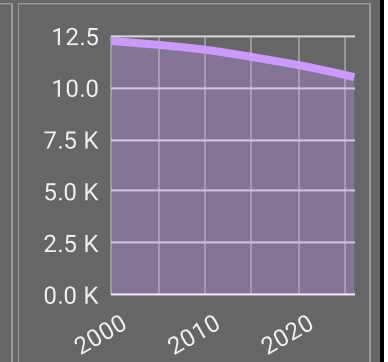
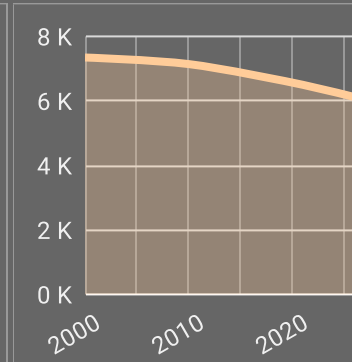
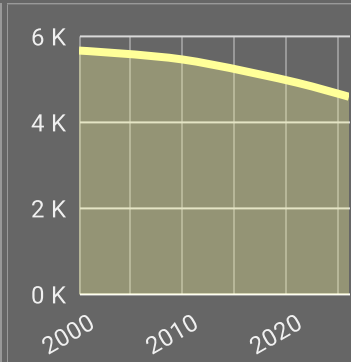
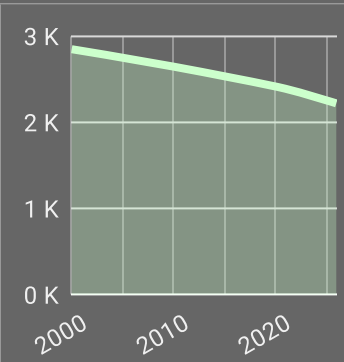
3 mi radius

5 mi radius

10 mi radius

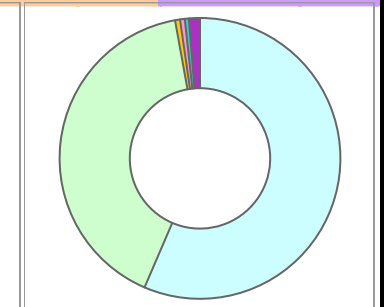
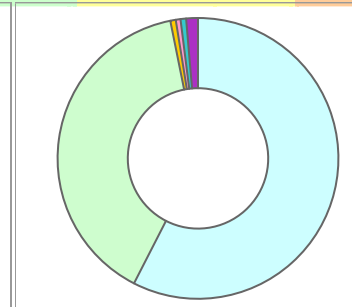
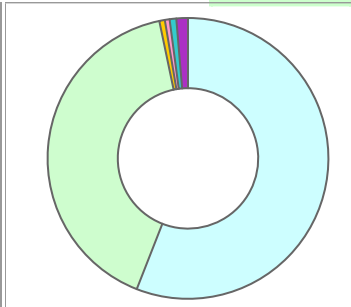
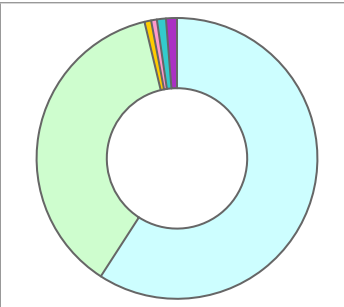
### Population

Estimated Population (2021)	2,389	4,923	6,497	11,017
Projected Population (2026)	2,220	4,596	6,115	10,518
Census Population (2010)	2,646	5,462	7,141	11,843
Census Population (2000)	2,848	5,670	7,345	12,265
Projected Annual Growth (2021-2026)	-170 -1.4%	-327 -1.3%	-383 -1.2%	-499 -0.9%
Historical Annual Growth (2010-2021)	-257 -1.0%	-539 -1.0%	-644 -0.9%	-826 -0.7%
Historical Annual Growth (2000-2010)	-202 -0.7%	-208 -0.4%	-204 -0.3%	-422 -0.3%
Estimated Population Density (2021)	761 <i>psm</i>	174 <i>psm</i>	83 <i>psm</i>	35 <i>psm</i>
Trade Area Size	3.1 <i>sq mi</i>	28.3 <i>sq mi</i>	78.5 <i>sq mi</i>	314.0 <i>sq mi</i>



### Race and Ethnicity (2021)

Not Hispanic or Latino Population	2,326 97.3%	4,819 97.9%	6,373 98.1%	10,837 98.4%
White	1,392 59.9%	2,718 56.4%	3,693 57.9%	6,157 56.8%
Black or African American	877 37.7%	1,990 41.3%	2,531 39.7%	4,441 41.0%
American Indian or Alaska Native	18 0.8%	31 0.6%	41 0.6%	63 0.6%
Asian	16 0.7%	25 0.5%	33 0.5%	56 0.5%
Hawaiian or Pacific Islander	- -	- -	- -	- -
Other Race	- -	- -	- -	2 -
Two or More Races	22 1.0%	55 1.1%	75 1.2%	117 1.1%
Hispanic or Latino Population	64 2.7%	104 2.1%	124 1.9%	180 1.6%
White	20 31.7%	37 35.0%	44 35.6%	63 34.8%
Black or African American	10 16.5%	18 16.9%	22 18.1%	41 22.9%
American Indian or Alaska Native	- -	- -	- -	- -
Asian	- -	2 2.1%	3 2.1%	3 1.7%
Hispanic Hawaiian or Pacific Islander	- -	- -	- -	- -
Other Race	25 39.1%	38 36.2%	42 33.6%	50 27.9%
Two or More Races	8 11.9%	10 9.8%	13 10.6%	22 12.1%



White Black or African American American Indian or Alaska Native Asian Hawaiian or Pacific Islander Other Race 2+ Races

This report was produced using data from private and government sources deemed to be reliable. The information herein is provided without representation or warranty.

# GRAPHIC PROFILE

2000-2010 Census, 2021 Estimates with 2026 Projections

Calculated using Weighted Block Centroid from Block Groups

Lat/Lon: 31.5226/-87.8963

RGRAP3

**1011 College Ave**

**Jackson, AL 36545**

1 mi radius

3 mi radius

5 mi radius

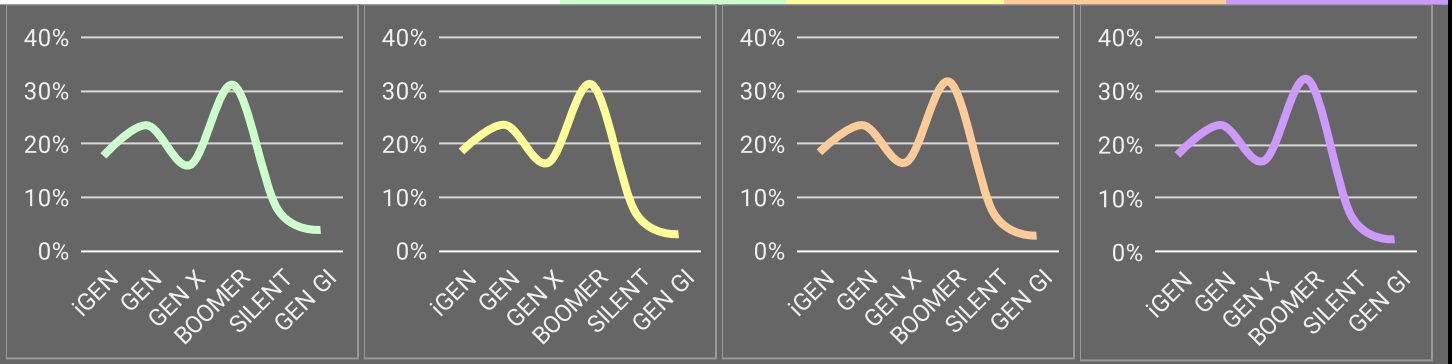
10 mi radius

## Age Distribution (2021)

Age Group	1 mi radius	3 mi radius	5 mi radius	10 mi radius
Age Under 5 Years	149 6.2%	321 6.5%	417 6.4%	674 6.1%
Age 5 to 9 Years	137 5.7%	294 6.0%	390 6.0%	656 6.0%
Age 10 to 14 Years	138 5.8%	299 6.1%	390 6.0%	662 6.0%
Age 15 to 19 Years	125 5.2%	266 5.4%	356 5.5%	616 5.6%
Age 20 to 24 Years	140 5.9%	283 5.8%	368 5.7%	624 5.7%
Age 25 to 29 Years	167 7.0%	322 6.5%	420 6.5%	722 6.6%
Age 30 to 34 Years	129 5.4%	289 5.9%	382 5.9%	642 5.8%
Age 35 to 39 Years	119 5.0%	260 5.3%	343 5.3%	587 5.3%
Age 40 to 44 Years	126 5.3%	271 5.5%	358 5.5%	628 5.7%
Age 45 to 49 Years	138 5.8%	279 5.7%	375 5.8%	659 6.0%
Age 50 to 54 Years	165 6.9%	338 6.9%	448 6.9%	751 6.8%
Age 55 to 59 Years	171 7.2%	364 7.4%	488 7.5%	817 7.4%
Age 60 to 64 Years	138 5.8%	302 6.1%	411 6.3%	740 6.7%
Age 65 to 69 Years	136 5.7%	276 5.6%	373 5.7%	662 6.0%
Age 70 to 74 Years	131 5.5%	252 5.1%	331 5.1%	567 5.1%
Age 75 to 79 Years	107 4.5%	209 4.2%	278 4.3%	462 4.2%
Age 80 to 84 Years	81 3.4%	148 3.0%	187 2.9%	287 2.6%
Age 85 Years or Over	93 3.9%	151 3.1%	182 2.8%	261 2.4%
Median Age	42.6	41.4	41.6	41.7

## Generation (2021)

Generation	1 mi radius	3 mi radius	5 mi radius	10 mi radius
iGeneration (Age Under 15 Years)	424 17.7%	914 18.6%	1,196 18.4%	1,992 18.1%
Generation 9/11 Millennials (Age 15 to 34 Years)	561 23.5%	1,160 23.6%	1,526 23.5%	2,604 23.6%
Gen Xers (Age 35 to 49 Years)	383 16.0%	810 16.5%	1,076 16.6%	1,874 17.0%
Baby Boomers (Age 50 to 74 Years)	741 31.0%	1,532 31.1%	2,052 31.6%	3,538 32.1%
Silent Generation (Age 75 to 84 Years)	188 7.9%	356 7.2%	465 7.2%	748 6.8%
G.I. Generation (Age 85 Years or Over)	93 3.9%	151 3.1%	182 2.8%	261 2.4%



This report was produced using data from private and government sources deemed to be reliable. The information herein is provided without representation or warranty.



# GRAPHIC PROFILE

2000-2010 Census, 2021 Estimates with 2026 Projections

Calculated using Weighted Block Centroid from Block Groups

Lat/Lon: 31.5226/-87.8963

RGRAP3

## 1011 College Ave

Jackson, AL 36545

1 mi radius

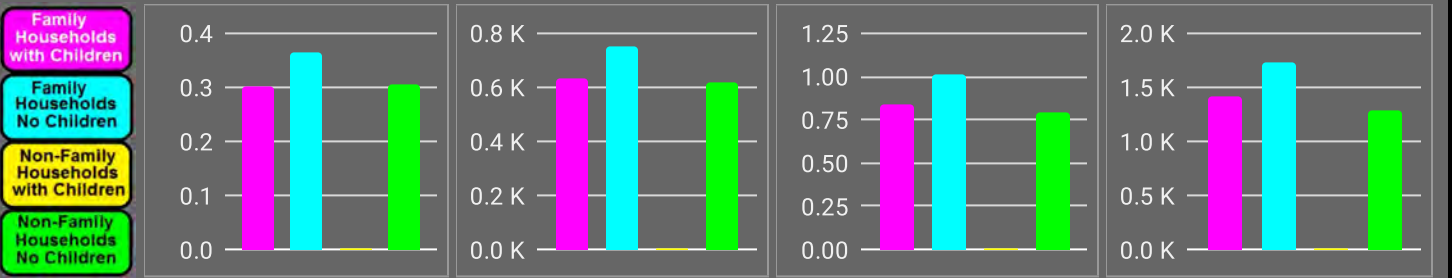
3 mi radius

5 mi radius

10 mi radius

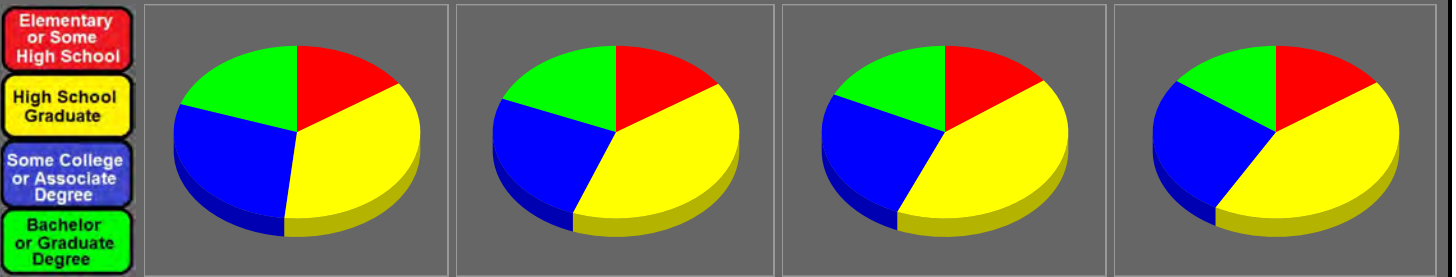
### Household Type (2021)

	1 mi radius	3 mi radius	5 mi radius	10 mi radius
Total Households	971	2,004	2,637	4,439
Family Households	663 68.3%	1,384 69.1%	1,846 70.0%	3,152 71.0%
Family Households with Children	300 45.3%	632 45.7%	834 45.2%	1,422 45.1%
Family Households No Children	363 54.7%	752 54.3%	1,012 54.8%	1,730 54.9%
Non-Family Households	308 31.7%	620 30.9%	791 30.0%	1,287 29.0%
Non-Family Households with Children	2 0.6%	3 0.4%	3 0.4%	6 0.5%
Non-Family Households No Children	306 99.4%	617 99.6%	788 99.6%	1,281 99.5%



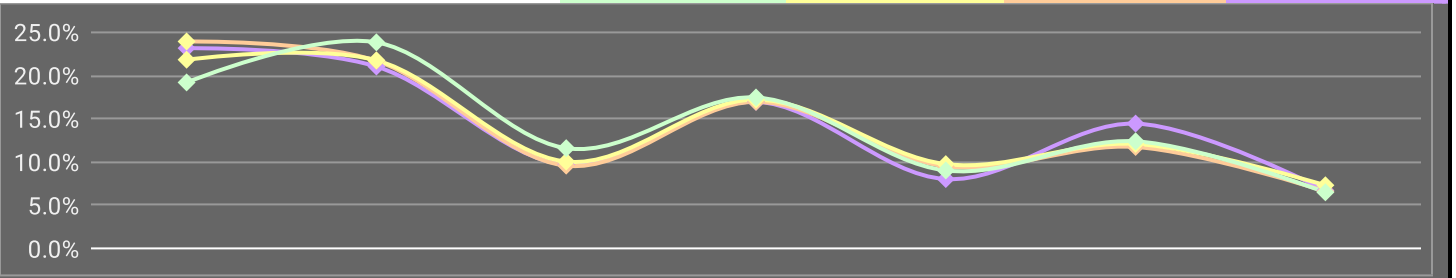
### Education Attainment (2021)

	1 mi radius	3 mi radius	5 mi radius	10 mi radius
Elementary or Some High School	263 15.4%	538 15.5%	676 14.8%	1,186 15.2%
High School Graduate	615 36.2%	1,389 40.1%	1,901 41.5%	3,341 42.9%
Some College or Associate Degree	487 28.6%	887 25.6%	1,184 25.9%	2,096 26.9%
Bachelor or Graduate Degree	336 19.7%	646 18.7%	816 17.8%	1,163 14.9%



### Household Income (2021)

	1 mi radius	3 mi radius	5 mi radius	10 mi radius
Estimated Average Household Income	\$62,059	\$58,133	\$60,446	\$58,449
Estimated Median Household Income	\$46,940	\$42,641	\$44,149	\$43,469
HH Income Under \$10,000	225 23.1%	479 23.9%	575 21.8%	852 19.2%
HH Income \$10,000 to \$34,999	204 21.0%	435 21.7%	573 21.7%	1,057 23.8%
HH Income \$35,000 to \$49,999	94 9.7%	192 9.6%	265 10.1%	515 11.6%
HH Income \$50,000 to \$74,999	165 17.0%	340 16.9%	454 17.2%	775 17.5%
HH Income \$75,000 to \$99,999	78 8.0%	190 9.5%	257 9.8%	401 9.0%
HH Income \$100,000 to \$149,999	140 14.4%	235 11.7%	319 12.1%	550 12.4%
HH Income \$150,000 or More	65 6.7%	133 6.6%	193 7.3%	289 6.5%



This report was produced using data from private and government sources deemed to be reliable. The information herein is provided without representation or warranty.



# EXPANDED PROFILE

2000-2010 Census, 2021 Estimates with 2026 Projections

Calculated using Weighted Block Centroid from Block Groups

Lat/Lon: 31.5226/-87.8963

RF5

## 1011 College Ave

## Jackson, AL 36545

	1 mi radius	3 mi radius	5 mi radius	10 mi radius
<b>Population</b>				
Estimated Population (2021)	2,389	4,923	6,497	11,017
Projected Population (2026)	2,220	4,596	6,115	10,518
Census Population (2010)	2,646	5,462	7,141	11,843
Census Population (2000)	2,848	5,670	7,345	12,265
Projected Annual Growth (2021 to 2026)	-170 -1.4%	-327 -1.3%	-383 -1.2%	-499 -0.9%
Historical Annual Growth (2010 to 2021)	-257 -0.9%	-539 -0.9%	-644 -0.8%	-826 -0.6%
Historical Annual Growth (2000 to 2010)	-202 -0.7%	-208 -0.4%	-204 -0.3%	-422 -0.3%
Estimated Population Density (2021)	761 psm	174 psm	83 psm	35 psm
Trade Area Size	3.1 sq mi	28.3 sq mi	78.5 sq mi	314.0 sq mi
<b>Households</b>				
Estimated Households (2021)	971	2,004	2,637	4,439
Projected Households (2026)	926	1,924	2,551	4,354
Census Households (2010)	1,056	2,175	2,834	4,665
Census Households (2000)	1,095	2,165	2,796	4,589
Estimated Households with Children (2021)	302 31.1%	635 31.7%	837 31.7%	1,428 32.2%
Estimated Average Household Size (2021)	2.38	2.42	2.43	2.46
<b>Average Household Income</b>				
Estimated Average Household Income (2021)	\$62,059	\$58,133	\$60,446	\$58,449
Projected Average Household Income (2026)	\$86,306	\$76,570	\$77,492	\$70,008
Estimated Average Family Income (2021)	\$77,430	\$70,366	\$71,895	\$68,709
<b>Median Household Income</b>				
Estimated Median Household Income (2021)	\$46,940	\$42,641	\$44,149	\$43,469
Projected Median Household Income (2026)	\$51,731	\$46,941	\$49,244	\$49,006
Estimated Median Family Income (2021)	\$57,245	\$55,589	\$57,966	\$55,947
<b>Per Capita Income</b>				
Estimated Per Capita Income (2021)	\$25,409	\$23,768	\$24,616	\$23,633
Projected Per Capita Income (2026)	\$36,213	\$32,161	\$32,418	\$29,063
Estimated Per Capita Income 5 Year Growth	\$10,804 42.5%	\$8,393 35.3%	\$7,802 31.7%	\$5,430 23.0%
Estimated Average Household Net Worth (2021)	\$337,178	\$329,127	\$350,850	\$337,249
<b>Daytime Demos (2021)</b>				
Total Businesses	201	267	318	348
Total Employees	2,178	3,305	4,017	4,157
Company Headquarter Businesses	13 6.4%	14 5.3%	15 4.9%	16 4.6%
Company Headquarter Employees	256 11.7%	276 8.4%	288 7.2%	291 7.0%
Employee Population per Business	10.9	12.4	12.6	11.9
Residential Population per Business	11.9	18.5	20.4	31.6

This report was produced using data from private and government sources deemed to be reliable. The information herein is provided without representation or warranty.



# EXPANDED PROFILE

2000-2010 Census, 2021 Estimates with 2026 Projections

Calculated using Weighted Block Centroid from Block Groups

Lat/Lon: 31.5226/-87.8963

RF5

## 1011 College Ave

## Jackson, AL 36545

### Race & Ethnicity

	1 mi radius		3 mi radius		5 mi radius		10 mi radius	
White (2021)	1,413	59.1%	2,754	55.9%	3,737	57.5%	6,219	56.5%
Black or African American (2021)	887	37.1%	2,007	40.8%	2,553	39.3%	4,482	40.7%
American Indian or Alaska Native (2021)	18	0.8%	31	0.6%	41	0.6%	64	0.6%
Asian (2021)	16	0.7%	27	0.5%	35	0.5%	59	0.5%
Hawaiian or Pacific Islander (2021)	-	-	-	-	-	-	1	-
Other Race (2021)	25	1.0%	38	0.8%	43	0.7%	52	0.5%
Two or More Races (2021)	30	1.3%	66	1.3%	88	1.4%	139	1.3%
Not Hispanic or Latino Population (2021)	2,326	97.3%	4,819	97.9%	6,373	98.1%	10,837	98.4%
Hispanic or Latino Population (2021)	64	2.7%	104	2.1%	124	1.9%	180	1.6%
Not Hispanic or Latino Population (2026)	2,163	97.4%	4,502	98.0%	6,002	98.2%	10,353	98.4%
Hispanic or Latino Population (2026)	57	2.6%	94	2.0%	112	1.8%	165	1.6%
Not Hispanic or Latino Population (2010)	2,600	98.2%	5,387	98.6%	7,054	98.8%	11,721	99.0%
Hispanic or Latino Population (2010)	46	1.8%	75	1.4%	87	1.2%	122	1.0%
Not Hispanic or Latino Population (2000)	2,825	99.2%	5,634	99.4%	7,302	99.4%	12,195	99.4%
Hispanic or Latino Population (2000)	23	0.8%	36	0.6%	43	0.6%	70	0.6%
Projected Hispanic Annual Growth (2021 to 2026)	-7	-2.1%	-10	-2.0%	-12	-1.9%	-14	-1.6%
Historic Hispanic Annual Growth (2000 to 2021)	41	8.7%	68	9.0%	81	8.9%	109	7.4%

### Age Distribution (2021)

Age Under 5	149	6.2%	321	6.5%	417	6.4%	674	6.1%
Age 5 to 9 Years	137	5.7%	294	6.0%	390	6.0%	656	6.0%
Age 10 to 14 Years	138	5.8%	299	6.1%	390	6.0%	662	6.0%
Age 15 to 19 Years	125	5.2%	266	5.4%	356	5.5%	616	5.6%
Age 20 to 24 Years	140	5.9%	283	5.8%	368	5.7%	624	5.7%
Age 25 to 29 Years	167	7.0%	322	6.5%	420	6.5%	722	6.6%
Age 30 to 34 Years	129	5.4%	289	5.9%	382	5.9%	642	5.8%
Age 35 to 39 Years	119	5.0%	260	5.3%	343	5.3%	587	5.3%
Age 40 to 44 Years	126	5.3%	271	5.5%	358	5.5%	628	5.7%
Age 45 to 49 Years	138	5.8%	279	5.7%	375	5.8%	659	6.0%
Age 50 to 54 Years	165	6.9%	338	6.9%	448	6.9%	751	6.8%
Age 55 to 59 Years	171	7.2%	364	7.4%	488	7.5%	817	7.4%
Age 60 to 64 Years	138	5.8%	302	6.1%	411	6.3%	740	6.7%
Age 65 to 74 Years	266	11.1%	529	10.7%	705	10.8%	1,229	11.2%
Age 75 to 84 Years	188	7.9%	356	7.2%	465	7.2%	748	6.8%
Age 85 Years or Over	93	3.9%	151	3.1%	182	2.8%	261	2.4%
Median Age	42.6		41.4		41.6		41.7	

### Gender Age Distribution (2021)

Female Population	1,266	53.0%	2,613	53.1%	3,432	52.8%	5,737	52.1%
Age 0 to 19 Years	271	21.4%	595	22.8%	790	23.0%	1,324	23.1%
Age 20 to 64 Years	682	53.9%	1,432	54.8%	1,885	54.9%	3,183	55.5%
Age 65 Years or Over	313	24.7%	587	22.5%	756	22.0%	1,230	21.4%
Female Median Age	44.3		42.3		42.2		42.2	
Male Population	1,124	47.0%	2,310	46.9%	3,065	47.2%	5,280	47.9%
Age 0 to 19 Years	277	24.7%	584	25.3%	761	24.8%	1,284	24.3%
Age 20 to 64 Years	613	54.5%	1,276	55.2%	1,708	55.7%	2,987	56.6%
Age 65 Years or Over	234	20.8%	450	19.5%	596	19.4%	1,008	19.1%
Male Median Age	41.2		40.6		41.1		41.2	

This report was produced using data from private and government sources deemed to be reliable. The information herein is provided without representation or warranty.



# EXPANDED PROFILE

2000-2010 Census, 2021 Estimates with 2026 Projections

Calculated using Weighted Block Centroid from Block Groups

Lat/Lon: 31.5226/-87.8963

RF5

## 1011 College Ave

## Jackson, AL 36545

### Household Income Distribution (2021)

	1 mi radius		3 mi radius		5 mi radius		10 mi radius	
HH Income \$200,000 or More	18	1.8%	36	1.8%	54	2.1%	90	2.0%
HH Income \$150,000 to \$199,999	48	4.9%	97	4.8%	139	5.3%	199	4.5%
HH Income \$100,000 to \$149,999	140	14.4%	235	11.7%	319	12.1%	550	12.4%
HH Income \$75,000 to \$99,999	78	8.0%	190	9.5%	257	9.8%	401	9.0%
HH Income \$50,000 to \$74,999	165	17.0%	340	16.9%	454	17.2%	775	17.5%
HH Income \$35,000 to \$49,999	94	9.7%	192	9.6%	265	10.1%	515	11.6%
HH Income \$25,000 to \$34,999	89	9.2%	206	10.3%	274	10.4%	489	11.0%
HH Income \$15,000 to \$24,999	68	7.1%	154	7.7%	212	8.0%	401	9.0%
HH Income Under \$15,000	272	28.0%	554	27.7%	663	25.1%	1,020	23.0%
HH Income \$35,000 or More	542	55.8%	1,090	54.4%	1,489	56.4%	2,530	57.0%
HH Income \$75,000 or More	284	29.2%	558	27.9%	770	29.2%	1,240	27.9%

### Housing (2021)

	1 mi radius		3 mi radius		5 mi radius		10 mi radius	
Total Housing Units	1,211		2,502		3,294		5,649	
Housing Units Occupied	971	80.2%	2,004	80.1%	2,637	80.1%	4,439	78.6%
Housing Units Owner-Occupied	708	72.9%	1,455	72.6%	1,964	74.5%	3,499	78.8%
Housing Units, Renter-Occupied	263	27.1%	549	27.4%	673	25.5%	941	21.2%
Housing Units, Vacant	240	24.7%	499	24.9%	656	24.9%	1,209	27.2%

### Marital Status (2021)

	1 mi radius		3 mi radius		5 mi radius		10 mi radius	
Never Married	597	30.4%	1,438	35.9%	1,880	35.5%	3,021	33.5%
Currently Married	888	45.2%	1,668	41.6%	2,191	41.3%	3,806	42.2%
Separated	78	4.0%	207	5.2%	254	4.8%	389	4.3%
Widowed	174	8.9%	304	7.6%	416	7.8%	667	7.4%
Divorced	228	11.6%	393	9.8%	560	10.6%	1,143	12.7%

### Household Type (2021)

	1 mi radius		3 mi radius		5 mi radius		10 mi radius	
Population Family	1,978	82.8%	4,163	84.6%	5,550	85.4%	9,503	86.3%
Population Non-Family	337	14.1%	678	13.8%	865	13.3%	1,404	12.7%
Population Group Quarters	74	3.1%	82	1.7%	83	1.3%	109	1.0%
Family Households	663	68.3%	1,384	69.1%	1,846	70.0%	3,152	71.0%
Non-Family Households	308	31.7%	620	30.9%	791	30.0%	1,287	29.0%
Married Couple with Children	182	20.5%	369	22.1%	498	22.7%	879	23.1%
Average Family Household Size	3.0		3.0		3.0		3.0	

### Household Size (2021)

	1 mi radius		3 mi radius		5 mi radius		10 mi radius	
1 Person Households	288	29.7%	580	28.9%	739	28.0%	1,199	27.0%
2 Person Households	332	34.2%	679	33.9%	901	34.2%	1,515	34.1%
3 Person Households	151	15.5%	317	15.8%	427	16.2%	743	16.7%
4 Person Households	125	12.8%	270	13.5%	357	13.5%	609	13.7%
5 Person Households	43	4.4%	91	4.5%	127	4.8%	240	5.4%
6 or More Person Households	32	3.3%	68	3.4%	86	3.2%	132	3.0%

### Household Vehicles (2021)

	1 mi radius		3 mi radius		5 mi radius		10 mi radius	
Households with 0 Vehicles Available	55	5.7%	178	8.9%	233	8.8%	341	7.7%
Households with 1 Vehicles Available	270	27.8%	492	24.6%	614	23.3%	1,007	22.7%
Households with 2 or More Vehicles Available	646	66.5%	1,333	66.5%	1,791	67.9%	3,092	69.6%
Total Vehicles Available	1,978		4,125		5,579		9,588	
Average Vehicles Per Household	2.0		2.1		2.1		2.2	

This report was produced using data from private and government sources deemed to be reliable. The information herein is provided without representation or warranty.



# EXPANDED PROFILE

2000-2010 Census, 2021 Estimates with 2026 Projections

Calculated using Weighted Block Centroid from Block Groups

Lat/Lon: 31.5226/-87.8963

RF5

## 1011 College Ave

### Jackson, AL 36545

	1 mi radius		3 mi radius		5 mi radius		10 mi radius	
<b>Labor Force (2021)</b>								
Estimated Labor Population Age 16 Years or Over	1,937		3,946		5,217		8,885	
Estimated Civilian Employed	820	42.3%	1,722	43.6%	2,305	44.2%	3,900	43.9%
Estimated Civilian Unemployed	58	3.0%	158	4.0%	202	3.9%	311	3.5%
Estimated in Armed Forces	-	-	-	-	-	-	-	-
Estimated Not in Labor Force	1,060	54.7%	2,066	52.4%	2,710	51.9%	4,673	52.6%
Unemployment Rate	3.0%		4.0%		3.9%		3.5%	
<b>Occupation (2021)</b>								
Occupation: Population Age 16 Years or Over	820		1,722		2,305		3,900	
Management, Business, Financial Operations	65	8.0%	135	7.9%	181	7.9%	318	8.1%
Professional, Related	142	17.3%	348	20.2%	471	20.5%	792	20.3%
Service	88	10.7%	206	12.0%	310	13.5%	603	15.5%
Sales, Office	192	23.5%	337	19.5%	419	18.2%	679	17.4%
Farming, Fishing, Forestry	5	0.6%	24	1.4%	29	1.3%	49	1.3%
Construct, Extraction, Maintenance	94	11.5%	223	12.9%	302	13.1%	480	12.3%
Production, Transport Material Moving	233	28.4%	449	26.1%	591	25.6%	980	25.1%
White Collar Workers	399	48.7%	820	47.6%	1,072	46.5%	1,788	45.8%
Blue Collar Workers	420	51.3%	902	52.4%	1,233	53.5%	2,112	54.2%
<b>Consumer Expenditure (2021)</b>								
Total Household Expenditure	\$49.15 M		\$96.74 M		\$130.61 M		\$214.91 M	
Total Non-Retail Expenditure	\$25.93 M	52.7%	\$51.04 M	52.8%	\$68.9 M	52.8%	\$113.27 M	52.7%
Total Retail Expenditure	\$23.22 M	47.3%	\$45.69 M	47.2%	\$61.71 M	47.2%	\$101.64 M	47.3%
Apparel	\$1.7 M	3.5%	\$3.35 M	3.5%	\$4.53 M	3.5%	\$7.44 M	3.5%
Contributions	\$1.53 M	3.1%	\$3.01 M	3.1%	\$4.09 M	3.1%	\$6.73 M	3.1%
Education	\$1.41 M	2.9%	\$2.76 M	2.8%	\$3.73 M	2.9%	\$6.05 M	2.8%
Entertainment	\$2.73 M	5.6%	\$5.37 M	5.6%	\$7.27 M	5.6%	\$11.96 M	5.6%
Food and Beverages	\$7.33 M	14.9%	\$14.44 M	14.9%	\$19.46 M	14.9%	\$32.01 M	14.9%
Furnishings and Equipment	\$1.7 M	3.5%	\$3.33 M	3.4%	\$4.52 M	3.5%	\$7.43 M	3.5%
Gifts	\$1.11 M	2.3%	\$2.19 M	2.3%	\$2.98 M	2.3%	\$4.91 M	2.3%
Health Care	\$4.25 M	8.6%	\$8.37 M	8.7%	\$11.3 M	8.7%	\$18.68 M	8.7%
Household Operations	\$1.91 M	3.9%	\$3.75 M	3.9%	\$5.07 M	3.9%	\$8.34 M	3.9%
Miscellaneous Expenses	\$927.73 K	1.9%	\$1.82 M	1.9%	\$2.47 M	1.9%	\$4.06 M	1.9%
Personal Care	\$657.92 K	1.3%	\$1.29 M	1.3%	\$1.75 M	1.3%	\$2.88 M	1.3%
Personal Insurance	\$330.13 K	0.7%	\$648.79 K	0.7%	\$883.92 K	0.7%	\$1.46 M	0.7%
Reading	\$106.59 K	0.2%	\$209.54 K	0.2%	\$283.45 K	0.2%	\$466.6 K	0.2%
Shelter	\$10.43 M	21.2%	\$20.56 M	21.3%	\$27.71 M	21.2%	\$45.47 M	21.2%
Tobacco	\$330.67 K	0.7%	\$654.35 K	0.7%	\$871.64 K	0.7%	\$1.44 M	0.7%
Transportation	\$8.91 M	18.1%	\$17.52 M	18.1%	\$23.69 M	18.1%	\$39.05 M	18.2%
Utilities	\$3.78 M	7.7%	\$7.45 M	7.7%	\$10.01 M	7.7%	\$16.54 M	7.7%
<b>Educational Attainment (2021)</b>								
Adult Population Age 25 Years or Over	1,701		3,460		4,577		7,785	
Elementary (Grade Level 0 to 8)	88	5.1%	176	5.1%	222	4.8%	331	4.3%
Some High School (Grade Level 9 to 11)	175	10.3%	362	10.5%	454	9.9%	855	11.0%
High School Graduate	615	36.2%	1,389	40.1%	1,901	41.5%	3,341	42.9%
Some College	345	20.3%	616	17.8%	820	17.9%	1,432	18.4%
Associate Degree Only	142	8.3%	271	7.8%	364	8.0%	664	8.5%
Bachelor Degree Only	183	10.7%	369	10.7%	461	10.1%	645	8.3%
Graduate Degree	153	9.0%	278	8.0%	355	7.8%	518	6.7%

This report was produced using data from private and government sources deemed to be reliable. The information herein is provided without representation or warranty.



# EXPANDED PROFILE

2000-2010 Census, 2021 Estimates with 2026 Projections

Calculated using Weighted Block Centroid from Block Groups

Lat/Lon: 31.5226/-87.8963

RF5

## 1011 College Ave

### Jackson, AL 36545

#### Units In Structure (2021)

	1 mi radius		3 mi radius		5 mi radius		10 mi radius	
1 Detached Unit	752	71.3%	1,446	66.5%	1,896	66.9%	3,037	65.1%
1 Attached Unit	4	0.4%	6	0.3%	7	0.2%	7	0.2%
2 to 4 Units	50	4.7%	116	5.3%	130	4.6%	153	3.3%
5 to 9 Units	50	4.7%	71	3.3%	77	2.7%	89	1.9%
10 to 19 Units	10	1.0%	42	1.9%	47	1.7%	49	1.1%
20 to 49 Units	3	0.3%	10	0.5%	12	0.4%	13	0.3%
50 or More Units	-	-	2	-	2	-	7	0.2%
Mobile Home or Trailer	99	9.4%	306	14.1%	461	16.3%	1,077	23.1%
Other Structure	1	0.1%	5	0.2%	6	0.2%	7	0.2%

#### Homes Built By Year (2021)

Homes Built 2010 or later	4	0.4%	12	0.6%	37	1.3%	107	2.3%
Homes Built 2000 to 2009	77	7.3%	131	6.0%	198	7.0%	456	9.8%
Homes Built 1990 to 1999	159	15.1%	379	17.4%	514	18.1%	948	20.3%
Homes Built 1980 to 1989	195	18.5%	448	20.6%	570	20.1%	919	19.7%
Homes Built 1970 to 1979	84	8.0%	231	10.6%	349	12.3%	673	14.4%
Homes Built 1960 to 1969	215	20.4%	425	19.6%	494	17.4%	617	13.2%
Homes Built 1950 to 1959	130	12.3%	208	9.6%	268	9.5%	410	8.8%
Homes Built Before 1949	105	10.0%	168	7.7%	206	7.3%	309	6.6%

#### Home Values (2021)

Home Values \$1,000,000 or More	-	-	6	0.4%	9	0.5%	9	0.3%
Home Values \$500,000 to \$999,999	12	1.7%	33	2.3%	44	2.2%	79	2.3%
Home Values \$400,000 to \$499,999	4	0.6%	15	1.0%	19	1.0%	30	0.9%
Home Values \$300,000 to \$399,999	39	5.5%	94	6.4%	127	6.5%	200	5.7%
Home Values \$200,000 to \$299,999	96	13.6%	232	16.0%	320	16.3%	581	16.6%
Home Values \$150,000 to \$199,999	118	16.7%	196	13.5%	250	12.7%	416	11.9%
Home Values \$100,000 to \$149,999	211	29.8%	409	28.1%	526	26.8%	736	21.0%
Home Values \$70,000 to \$99,999	78	11.1%	152	10.5%	208	10.6%	376	10.8%
Home Values \$50,000 to \$69,999	52	7.3%	95	6.5%	121	6.2%	220	6.3%
Home Values \$25,000 to \$49,999	50	7.0%	117	8.0%	157	8.0%	282	8.1%
Home Values Under \$25,000	47	6.7%	107	7.4%	185	9.4%	570	16.3%
Owner-Occupied Median Home Value	\$131,810		\$133,605		\$131,197		\$120,429	
Renter-Occupied Median Rent	\$451		\$418		\$416		\$416	

#### Transportation To Work (2021)

Drive to Work Alone	765	93.5%	1,491	88.5%	1,954	87.8%	3,300	87.5%
Drive to Work in Carpool	37	4.6%	162	9.6%	234	10.5%	419	11.1%
Travel to Work by Public Transportation	-	-	-	-	-	-	-	-
Drive to Work on Motorcycle	-	-	-	-	-	-	-	-
Walk or Bicycle to Work	12	1.5%	14	0.8%	15	0.7%	17	0.5%
Other Means	2	0.3%	8	0.5%	11	0.5%	15	0.4%
Work at Home	2	0.2%	9	0.5%	10	0.4%	19	0.5%

#### Travel Time (2021)

Travel to Work in 14 Minutes or Less	468	57.2%	869	51.6%	1,075	48.3%	1,428	37.9%
Travel to Work in 15 to 29 Minutes	132	16.2%	294	17.5%	483	21.7%	1,131	30.0%
Travel to Work in 30 to 59 Minutes	133	16.2%	336	20.0%	462	20.8%	845	22.4%
Travel to Work in 60 Minutes or More	83	10.1%	213	12.6%	276	12.4%	481	12.7%
Average Minutes Travel to Work	14.3		17.9		18.1		19.4	

This report was produced using data from private and government sources deemed to be reliable. The information herein is provided without representation or warranty.