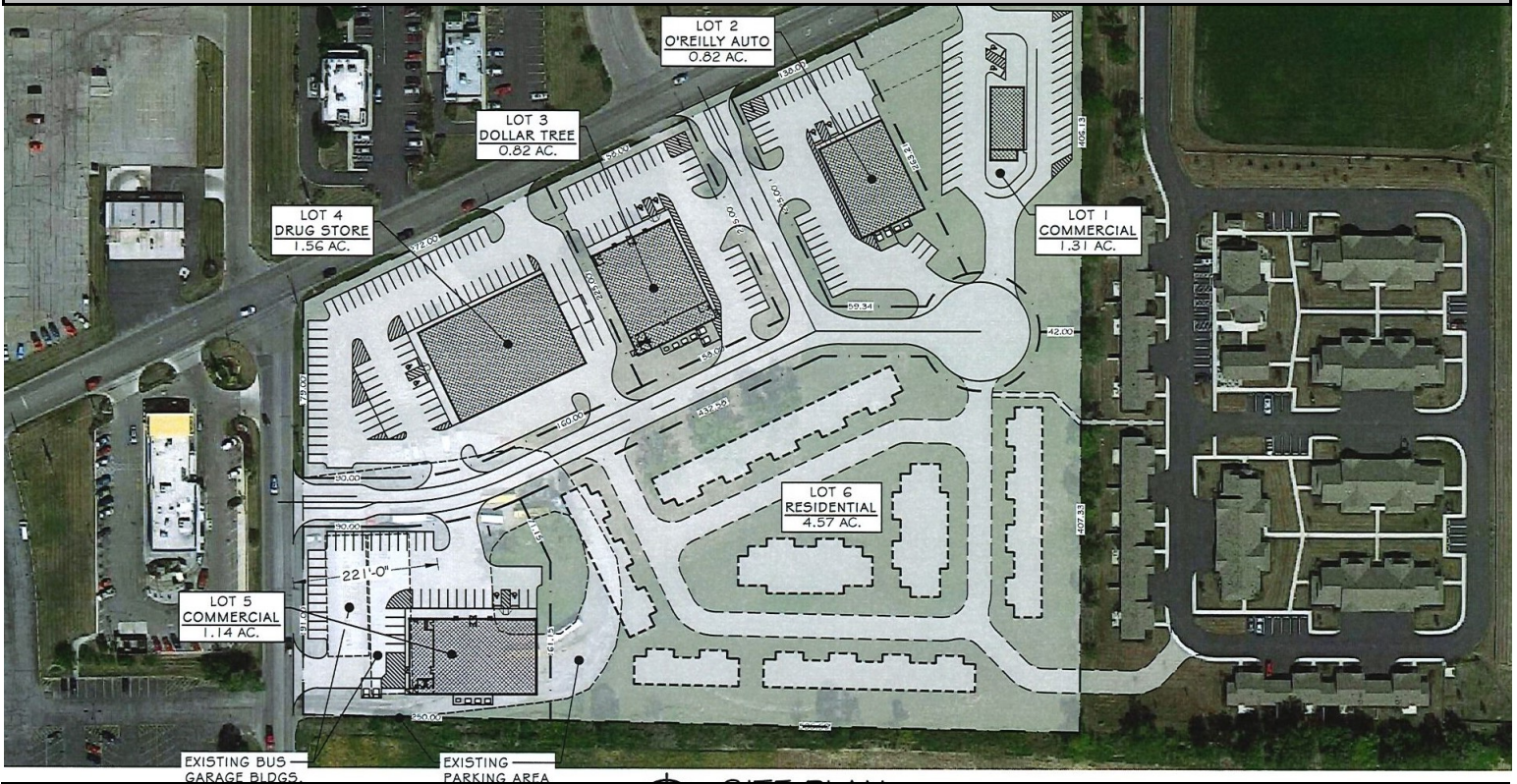


COCCA DEVELOPMENT

VACANT LAND AVAILABLE FOR BTS 1000 EAST COLUMBUS STREET KENTON, OH 43326



- Join the new development planned to include Dollar Tree and O'Reilly Auto Parts in new development approximately 1/2 mile South of WalMart
- Large ample parking lot
- Easy egress/ingress onto Columbus Street

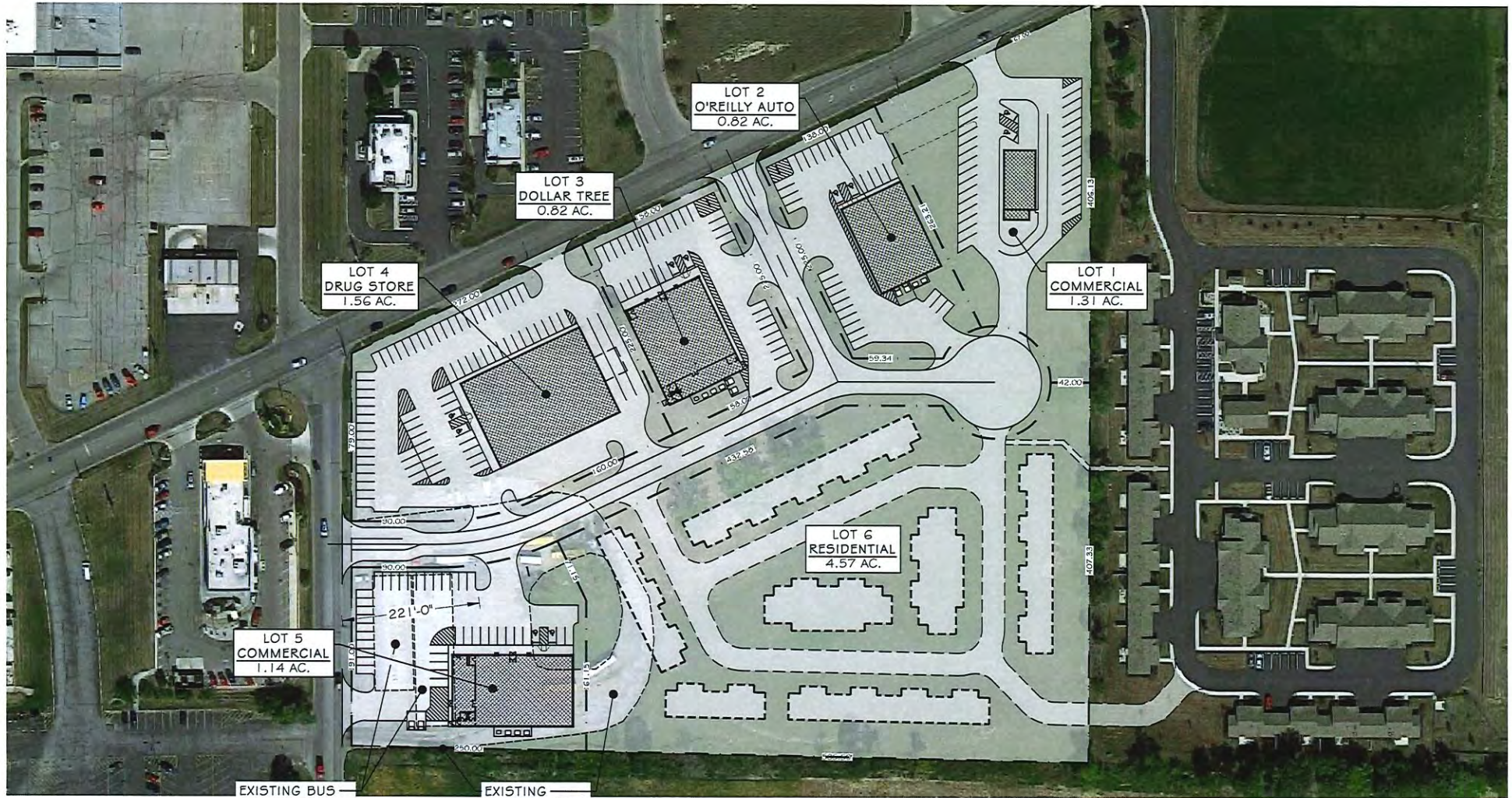
AVAILABLE SUITE AREA—\$/square foot NNN:

Approximately 12 Acres
WILL BUILD TO SUIT

NNN: Base rent plus prorata share of Real Estate Taxes, Insurance, and Common Area expenses, including but not limited to snow removal, lawn care, and parking lot maintenance. Tenant pays separately metered utilities for gas, electric, water, sewer, & trash removal.

CALL 330-729-1010 FOR MORE INFORMATION

www.coccadevelopment.com



SITE PLAN

SCALE: 1" = 100'-0"

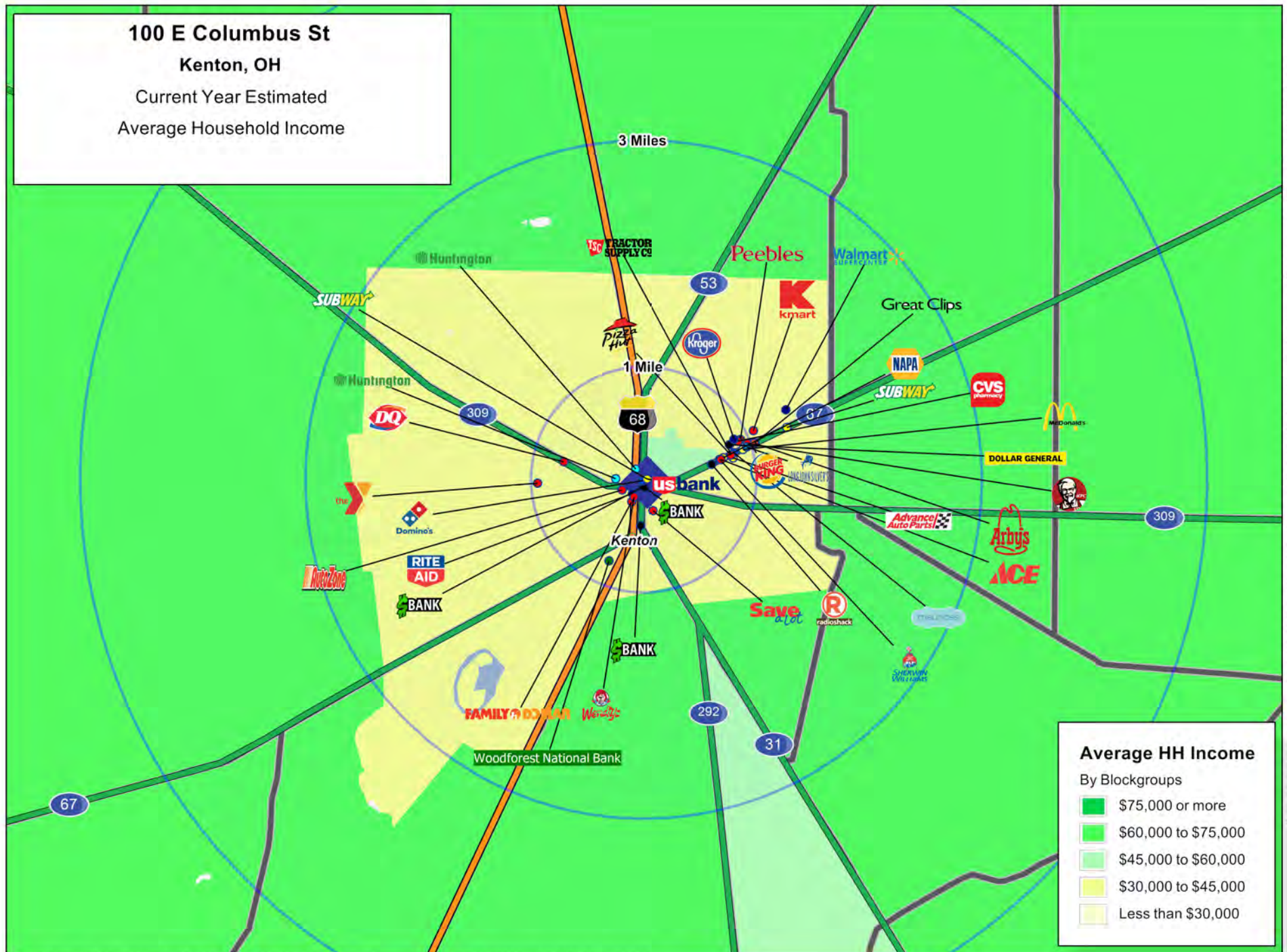
DEVELOPED & MANAGED BY
Cocca Development, LTD
 100 DEBARTOLO PLACE, SUITE 400
 BIRMINGHAM, OH 44812
 PHONE: 330-728-1010
 FAX: 330-728-1008

RETAIL PLAZA
 1000 E. COLUMBUS ST. & JACOB PARROTT BLVD.
 KENTON, OH 43326
 HARDIN COUNTY

100 East Columbus Street
Kenton, OH 43326



100 E Columbus St
Kenton, OH
 Current Year Estimated
 Average Household Income



This map was produced using data from private and government sources deemed to be reliable. The information herein is provided without representation or warranty.

GRAPHIC PROFILE

2000-2010 Census, 2014 Estimates with 2019 Projections

Calculated using Proportional Block Groups

Lat/Lon: 40.6481/-83.6078

RGRAP3

100 E Columbus St

Kenton, OH

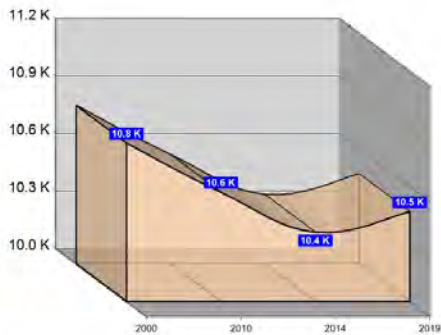
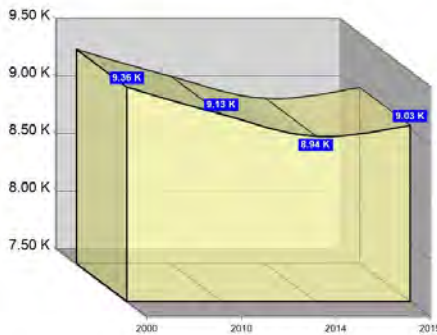
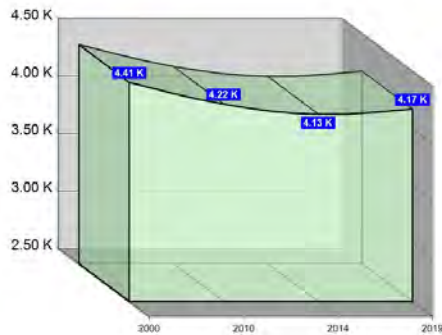
1 Mile

3 Miles

5 Miles

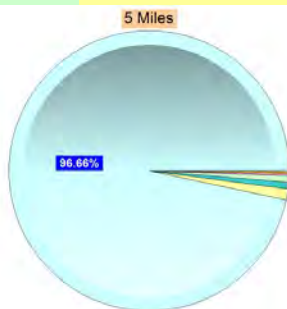
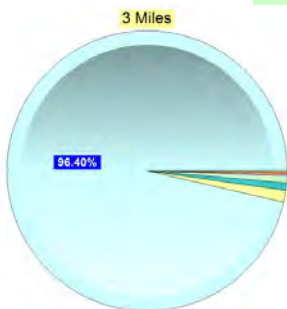
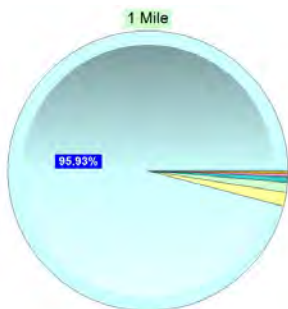
Population

Estimated Population (2014)	4,129	8,938	10,361
Projected Population (2019)	4,172	9,030	10,468
Census Population (2010)	4,216	9,128	10,569
Census Population (2000)	4,406	9,363	10,826
Projected Annual Growth (2014-2019)	44 0.2%	92 0.2%	107 0.2%
Historical Annual Growth (2010-2014)	-87 -1.1%	-190 -0.6%	-208 -0.6%
Historical Annual Growth (2000-2010)	-189 -0.4%	-235 -0.3%	-256 -0.2%
Estimated Population Density (2014)	1,315 psm	316 psm	132 psm
Trade Area Size	3.1 sq mi	28.3 sq mi	78.5 sq mi



Race and Ethnicity (2014)

Not Hispanic or Latino Population	4,040 97.8%	8,724 97.6%	10,138 97.8%
White	3,910 96.8%	8,501 97.4%	9,892 97.6%
Black or African American	46 1.1%	71 0.8%	76 0.7%
American Indian or Alaska Native	6 0.1%	12 0.1%	14 0.1%
Asian	14 0.4%	24 0.3%	28 0.3%
Hawaiian or Pacific Islander	- -	2 -	2 -
Other Race	2 0.1%	4 -	6 0.1%
Two or More Races	60 1.5%	111 1.3%	120 1.2%
Hispanic or Latino Population	89 2.2%	213 2.4%	223 2.2%
White	50 56.4%	115 54.2%	123 54.9%
Black or African American	2 2.2%	2 0.9%	2 0.9%
American Indian or Alaska Native	4 4.5%	4 1.9%	4 1.9%
Asian	- -	- -	- 0.1%
Hispanic Hawaiian or Pacific Islander	4 4.1%	9 4.2%	9 4.0%
Other Race	24 27.1%	72 33.9%	74 33.0%
Two or More Races	5 5.7%	10 4.8%	11 5.1%



White Black or African American American Indian or Alaska Native Asian Hawaiian or Pacific Islander Other Race 2+ Races

This report was produced using data from private and government sources deemed to be reliable. The information herein is provided without representation or warranty.

GRAPHIC PROFILE

2000-2010 Census, 2014 Estimates with 2019 Projections

Calculated using Proportional Block Groups

Lat/Lon: 40.6481/-83.6078

RGRAP3

100 E Columbus St

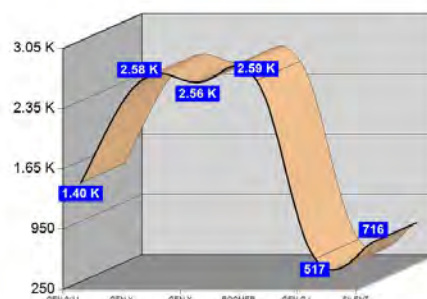
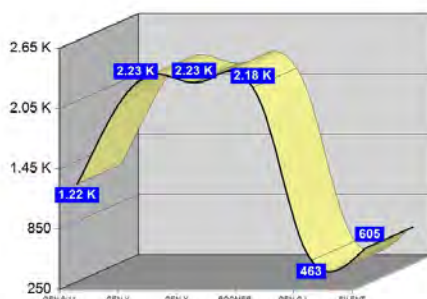
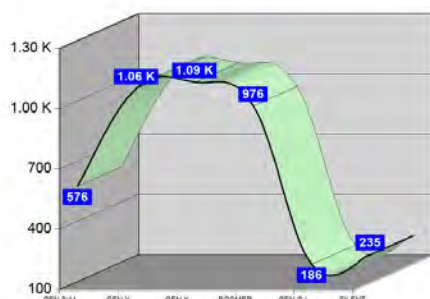
Kenton, OH

Age Distribution (2014)

	1 Mile		3 Miles		5 Miles	
Age Under 5 Years	300	7.3%	636	7.1%	717	6.9%
Age 5 to 9 Years	275	6.7%	589	6.6%	685	6.6%
Age 10 to 14 Years	291	7.0%	602	6.7%	703	6.8%
Age 15 to 19 Years	270	6.5%	558	6.2%	659	6.4%
Age 20 to 24 Years	231	5.6%	478	5.3%	538	5.2%
Age 25 to 29 Years	301	7.3%	595	6.7%	663	6.4%
Age 30 to 34 Years	276	6.7%	559	6.3%	630	6.1%
Age 35 to 39 Years	251	6.1%	521	5.8%	607	5.9%
Age 40 to 44 Years	276	6.7%	567	6.3%	659	6.4%
Age 45 to 49 Years	260	6.3%	580	6.5%	679	6.6%
Age 50 to 54 Years	273	6.6%	572	6.4%	679	6.6%
Age 55 to 59 Years	295	7.1%	619	6.9%	722	7.0%
Age 60 to 64 Years	229	5.5%	558	6.2%	659	6.4%
Age 65 to 69 Years	179	4.3%	436	4.9%	528	5.1%
Age 70 to 74 Years	135	3.3%	335	3.8%	403	3.9%
Age 75 to 79 Years	100	2.4%	270	3.0%	312	3.0%
Age 80 to 84 Years	87	2.1%	209	2.3%	236	2.3%
Age 85 Years or Over	100	2.4%	254	2.8%	281	2.7%
Median Age	36.8		38.7		39.0	

Generation (2014)

Generation 9/11 Millennials (Age Under 10 Years)	576	13.9%	1,225	13.7%	1,402	13.5%
Gen Y to Echo Boomers (Age 10 to 29 Years)	1,093	26.5%	2,233	25.0%	2,563	24.7%
Gen Xers (Age 30 to 49 Years)	1,063	25.7%	2,227	24.9%	2,575	24.9%
Baby Boomers (Age 50 to 69 Years)	976	23.6%	2,185	24.4%	2,588	25.0%
Silent Generation (Age 70 to 79 Years)	235	5.7%	605	6.8%	716	6.9%
G.I. Generation (Age 80 Years or Over)	186	4.5%	463	5.2%	517	5.0%



This report was produced using data from private and government sources deemed to be reliable. The information herein is provided without representation or warranty.

GRAPHIC PROFILE

2000-2010 Census, 2014 Estimates with 2019 Projections

Calculated using Proportional Block Groups

Lat/Lon: 40.6481/-83.6078

RGRAP3

100 E Columbus St

Kenton, OH

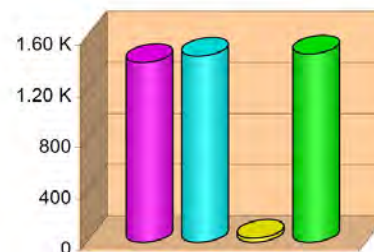
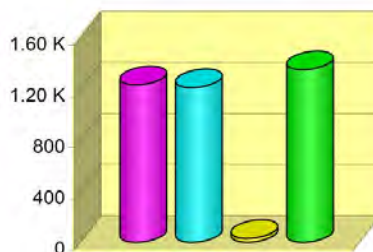
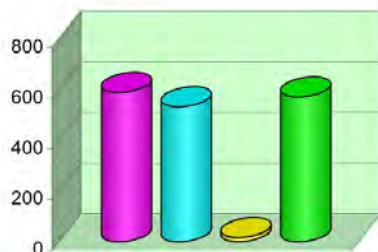
1 Mile

3 Miles

5 Miles

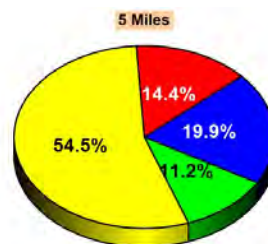
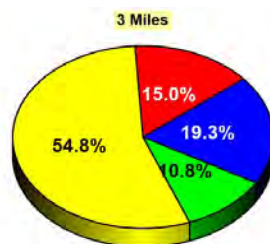
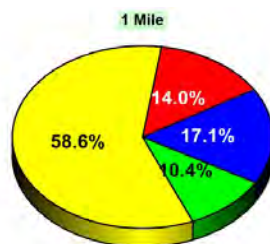
Household Type (2014)

Total Households	1,716	3,821	4,367
Family Households	1,126 31.1%	2,441 31.7%	2,861 33.3%
Family Households with Children	591 52.5%	1,231 50.4%	1,405 49.1%
Family Households No Children	534 47.5%	1,209 49.6%	1,456 50.9%
Non-Family Households	590 31.1%	1,380 31.7%	1,506 33.3%
Non-Family Households with Children	17 2.8%	30 2.2%	32 2.1%
Non-Family Households No Children	574 97.2%	1,350 97.8%	1,474 97.9%



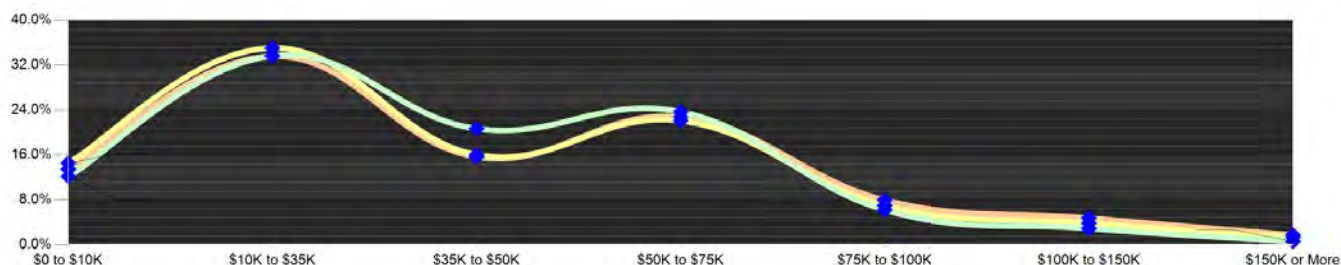
Education Attainment (2014)

Elementary or Some High School	378 14.0%	893 15.0%	997 14.4%
High School Graduate	1,586 58.6%	3,266 54.8%	3,782 54.5%
Some College or Associate Degree	462 17.1%	1,151 19.3%	1,383 19.9%
Bachelor or Graduate Degree	281 10.4%	645 10.8%	774 11.2%



Household Income (2014)

Estimated Average Household Income	\$39,401	\$38,331	\$40,818
Estimated Median Household Income	\$35,667	\$32,698	\$35,211
HH Income Under \$10,000	209 12.2%	557 14.6%	589 13.5%
HH Income \$10,000 to \$34,999	578 33.7%	1,340 35.1%	1,468 33.6%
HH Income \$35,000 to \$49,999	355 20.7%	614 16.1%	684 15.7%
HH Income \$50,000 to \$74,999	407 23.7%	845 22.1%	994 22.8%
HH Income \$75,000 to \$99,999	50 2.9%	148 3.9%	208 4.8%
HH Income \$100,000 to \$149,999	50 2.9%	148 3.9%	208 4.8%
HH Income \$150,000 or More	10 0.6%	51 1.3%	76 1.7%



This report was produced using data from private and government sources deemed to be reliable. The information herein is provided without representation or warranty.

EXPANDED PROFILE

2000-2010 Census, 2014 Estimates with 2019 Projections

Calculated using Proportional Block Groups

Lat/Lon: 40.6481/-83.6078

RF5

100 E Columbus St Kenton, OH	1 Mile	3 Miles	5 Miles
Population			
Estimated Population (2014)	4,129	8,938	10,361
Projected Population (2019)	4,172	9,030	10,468
Census Population (2010)	4,216	9,128	10,569
Census Population (2000)	4,406	9,363	10,826
Projected Annual Growth (2014 to 2019)	44 0.2%	92 0.2%	107 0.2%
Historical Annual Growth (2010 to 2014)	-87 -0.5%	-190 -0.5%	-208 -0.5%
Historical Annual Growth (2000 to 2010)	-189 -0.4%	-235 -0.3%	-256 -0.2%
Estimated Population Density (2014)	1,315 psm	316 psm	132 psm
Trade Area Size	3.14 sq mi	28.26 sq mi	78.49 sq mi
Households			
Estimated Households (2014)	1,716	3,821	4,367
Projected Households (2019)	1,775	3,954	4,519
Census Households (2010)	1,661	3,699	4,228
Census Households (2000)	1,784	3,842	4,368
Estimated Households with Children (2014)	608 35.4%	1,261 33.0%	1,438 32.9%
Estimated Average Household Size (2014)	2.37	2.31	2.34
Average Household Income			
Estimated Average Household Income (2014)	\$40,293	\$41,210	\$44,041
Projected Average Household Income (2019)	\$43,393	\$44,155	\$47,304
Estimated Average Family Income (2014)	\$46,247	\$49,335	\$52,488
Median Household Income			
Estimated Median Household Income (2014)	\$36,618	\$33,805	\$36,617
Projected Median Household Income (2019)	\$39,265	\$36,209	\$39,301
Estimated Median Family Income (2014)	\$44,150	\$46,403	\$49,069
Per Capita Income			
Estimated Per Capita Income (2014)	\$16,830	\$17,701	\$18,638
Projected Per Capita Income (2019)	\$18,556	\$19,426	\$20,504
Estimated Per Capita income 5 Year Growth	\$1,726 10.3%	\$1,725 9.7%	\$1,866 10.0%
Estimated Average Household Net Worth (2014)	\$256,648	\$262,246	\$277,507
Daytime Demos (2014)			
Total Businesses	185	487	522
Total Employees	1,602	4,656	5,062
Company Headquarter Businesses	- 0.2%	1 0.2%	1 0.2%
Company Headquarter Employees	13 0.8%	32 0.7%	32 0.6%
Employee Population per Business	8.6	9.6	9.7
Residential Population per Business	22.3	18.4	19.9

This report was produced using data from private and government sources deemed to be reliable. The information herein is provided without representation or warranty.

EXPANDED PROFILE

2000-2010 Census, 2014 Estimates with 2019 Projections

Calculated using Proportional Block Groups

Lat/Lon: 40.6481/-83.6078

RF5

100 E Columbus St	1 Mile		3 Miles		5 Miles	
Kenton, OH						
Race & Ethnicity						
White (2014)	3,961	95.9%	8,616	96.4%	10,015	96.7%
Black or African American (2014)	48	1.2%	73	0.8%	78	0.7%
American Indian or Alaska Native (2014)	10	0.2%	16	0.2%	19	0.2%
Asian (2014)	14	0.4%	24	0.3%	28	0.3%
Hawaiian or Pacific Islander (2014)	4	0.1%	11	0.1%	11	0.1%
Other Race (2014)	26	0.6%	77	0.9%	79	0.8%
Two or More Races (2014)	65	1.6%	121	1.4%	131	1.3%
Not Hispanic or Latino Population (2014)	4,040	97.8%	8,724	97.6%	10,138	97.8%
Hispanic or Latino Population (2014)	89	2.2%	213	2.4%	223	2.2%
Not Hispanic or Latino Population (2019)	4,072	97.6%	8,790	97.3%	10,217	97.6%
Hispanic or Latino Population (2019)	100	2.4%	240	2.7%	251	2.4%
Not Hispanic or Latino Population (2010)	4,138	98.1%	8,941	98.0%	10,374	98.1%
Hispanic or Latino Population (2010)	78	1.9%	187	2.0%	196	1.9%
Not Hispanic or Latino Population (2000)	4,374	99.3%	9,283	99.1%	10,728	99.1%
Hispanic or Latino Population (2000)	32	0.7%	80	0.9%	98	0.9%
Projected Hispanic Annual Growth (2014 to 2019)	11	2.5%	26	2.5%	28	2.5%
Historic Hispanic Annual Growth (2000 to 2014)	57	13.0%	133	11.9%	125	9.2%
Age Distribution (2014)						
Age Under 5	300	7.3%	636	7.1%	717	6.9%
Age 5 to 9 Years	275	6.7%	589	6.6%	685	6.6%
Age 10 to 14 Years	291	7.0%	602	6.7%	703	6.8%
Age 15 to 19 Years	270	6.5%	558	6.2%	659	6.4%
Age 20 to 24 Years	231	5.6%	478	5.3%	538	5.2%
Age 25 to 29 Years	301	7.3%	595	6.7%	663	6.4%
Age 30 to 34 Years	276	6.7%	559	6.3%	630	6.1%
Age 35 to 39 Years	251	6.1%	521	5.8%	607	5.9%
Age 40 to 44 Years	276	6.7%	567	6.3%	659	6.4%
Age 45 to 49 Years	260	6.3%	580	6.5%	679	6.6%
Age 50 to 54 Years	273	6.6%	572	6.4%	679	6.6%
Age 55 to 59 Years	295	7.1%	619	6.9%	722	7.0%
Age 60 to 64 Years	229	5.5%	558	6.2%	659	6.4%
Age 65 to 74 Years	314	7.6%	771	8.6%	932	9.0%
Age 75 to 84 Years	187	4.5%	478	5.4%	548	5.3%
Age 85 Years or Over	100	2.4%	254	2.8%	281	2.7%
Median Age	36.8		38.7		39.0	
Gender Age Distribution (2014)						
Female Population	2,169	52.5%	4,687	52.4%	5,386	52.0%
Age 0 to 19 Years	578	26.6%	1,178	25.1%	1,356	25.2%
Age 20 to 64 Years	1,221	56.3%	2,566	54.8%	2,954	54.8%
Age 65 Years or Over	370	17.1%	942	20.1%	1,076	20.0%
Female Median Age	38.4		41.0		41.2	
Male Population	1,960	47.5%	4,251	47.6%	4,975	48.0%
Age 0 to 19 Years	559	28.5%	1,207	28.4%	1,408	28.3%
Age 20 to 64 Years	1,171	59.7%	2,483	58.4%	2,883	57.9%
Age 65 Years or Over	230	11.7%	561	13.2%	685	13.8%
Male Median Age	35.0		36.2		36.8	

This report was produced using data from private and government sources deemed to be reliable. The information herein is provided without representation or warranty.

EXPANDED PROFILE

2000-2010 Census, 2014 Estimates with 2019 Projections

Calculated using Proportional Block Groups

Lat/Lon: 40.6481/-83.6078

RF5

100 E Columbus St

Kenton, OH

Household Income Distribution (2014)

	1 Mile	3 Miles	5 Miles
HH Income \$200,000 or More	3 0.2%	14 0.4%	25 0.6%
HH Income \$150,000 to \$199,999	8 0.5%	36 1.0%	51 1.2%
HH Income \$100,000 to \$149,999	50 2.9%	148 3.9%	208 4.8%
HH Income \$75,000 to \$99,999	107 6.2%	267 7.0%	348 8.0%
HH Income \$50,000 to \$74,999	407 23.7%	845 22.1%	994 22.8%
HH Income \$35,000 to \$49,999	355 20.7%	614 16.1%	684 15.7%
HH Income \$25,000 to \$34,999	217 12.7%	428 11.2%	484 11.1%
HH Income \$15,000 to \$24,999	264 15.4%	628 16.4%	676 15.5%
HH Income Under \$15,000	306 17.8%	841 22.0%	897 20.5%
HH Income \$35,000 or More	929 54.1%	1,924 50.4%	2,311 52.9%
HH Income \$75,000 or More	167 9.7%	466 12.2%	632 14.5%

Housing (2014)

Total Housing Units	1,902	4,179	4,761
Housing Units Occupied	1,716 90.2%	3,821 91.4%	4,367 91.7%
Housing Units Owner-Occupied	1,065 62.1%	2,381 62.3%	2,848 65.2%
Housing Units, Renter-Occupied	650 37.9%	1,440 37.7%	1,519 34.8%
Housing Units, Vacant	187 9.8%	358 8.6%	394 8.3%

Marital Status (2014)

Never Married	950 29.1%	2,173 30.6%	2,384 28.9%
Currently Married	1,293 39.6%	2,731 38.4%	3,441 41.7%
Separated	90 2.8%	232 3.3%	256 3.1%
Widowed	354 10.9%	875 12.3%	959 11.6%
Divorced	575 17.6%	1,100 15.5%	1,217 14.7%

Household Type (2014)

Population Family	3,263 79.0%	7,034 78.7%	8,288 80.0%
Population Non-Family	810 19.6%	1,783 19.9%	1,949 18.8%
Population Group Quarters	55 1.3%	121 1.4%	124 1.2%
Family Households	1,126 65.6%	2,441 63.9%	2,861 65.5%
Non-Family Households	590 34.4%	1,380 36.1%	1,506 34.5%
Married Couple with Children	301 23.3%	659 24.1%	801 23.3%
Average Family Household Size	2.9	2.9	2.9

Household Size (2014)

1 Person Households	481 28.0%	1,178 30.8%	1,285 29.4%
2 Person Households	574 33.4%	1,250 32.7%	1,470 33.7%
3 Person Households	289 16.9%	626 16.4%	709 16.2%
4 Person Households	208 12.1%	426 11.2%	498 11.4%
5 Person Households	99 5.8%	203 5.3%	238 5.4%
6 or More Person Households	65 3.8%	138 3.6%	167 3.8%

Household Vehicles (2014)

Households with 0 Vehicles Available	213 12.4%	561 14.7%	586 13.4%
Households with 1 Vehicles Available	552 32.2%	1,289 33.7%	1,394 31.9%
Households with 2 or More Vehicles Available	950 55.4%	1,971 51.6%	2,387 54.7%
Total Vehicles Available	3,009	6,344	7,554
Average Vehicles Per Household	1.8	1.7	1.7

This report was produced using data from private and government sources deemed to be reliable. The information herein is provided without representation or warranty.

EXPANDED PROFILE

2000-2010 Census, 2014 Estimates with 2019 Projections

Calculated using Proportional Block Groups

Lat/Lon: 40.6481/-83.6078

RF5

100 E Columbus St

Kenton, OH

Labor Force (2014)

Estimated Labor Population Age 16 Years or Over	3,167		6,909		8,035	
Estimated Civilian Employed	1,673	52.8%	3,589	51.9%	4,243	52.8%
Estimated Civilian Unemployed	103	3.3%	243	3.5%	280	3.5%
Estimated in Armed Forces	-	-	-	-	-	-
Estimated Not in Labor Force	1,391	43.9%	3,077	44.5%	3,512	43.7%
Unemployment Rate	3.3%		3.5%		3.5%	

Occupation (2010)

Occupation: Population Age 16 Years or Over	1,676		3,457		4,115	
Management, Business, Financial Operations	97	5.8%	195	5.6%	271	6.6%
Professional, Related	189	11.3%	399	11.5%	515	12.5%
Service	398	23.8%	815	23.6%	919	22.3%
Sales, Office	416	24.8%	817	23.6%	932	22.7%
Farming, Fishing, Forestry	6	0.4%	10	0.3%	23	0.6%
Construct, Extraction, Maintenance	111	6.6%	196	5.7%	251	6.1%
Production, Transport Material Moving	459	27.4%	1,025	29.6%	1,204	29.3%
White Collar Workers	702	41.9%	1,411	40.8%	1,718	41.8%
Blue Collar Workers	974	58.1%	2,046	59.2%	2,397	58.2%

Consumer Expenditure (2014)

Total Household Expenditure	\$65.3 M		\$147 M		\$176 M	
Total Non-Retail Expenditure	\$37.3 M	57.1%	\$84.1 M	57.0%	\$100 M	57.1%
Total Retail Expenditure	\$28.0 M	42.9%	\$63.4 M	43.0%	\$75.3 M	42.9%
Apparel	\$3.13 M	4.8%	\$7.08 M	4.8%	\$8.43 M	4.8%
Contributions	\$2.14 M	3.3%	\$4.91 M	3.3%	\$5.92 M	3.4%
Education	\$1.35 M	2.1%	\$3.18 M	2.2%	\$3.81 M	2.2%
Entertainment	\$3.57 M	5.5%	\$8.07 M	5.5%	\$9.64 M	5.5%
Food and Beverages	\$10.4 M	16.0%	\$23.5 M	15.9%	\$27.8 M	15.8%
Furnishings and Equipment	\$2.68 M	4.1%	\$6.07 M	4.1%	\$7.30 M	4.2%
Gifts	\$1.57 M	2.4%	\$3.59 M	2.4%	\$4.31 M	2.5%
Health Care	\$4.28 M	6.6%	\$9.62 M	6.5%	\$11.4 M	6.5%
Household Operations	\$2.11 M	3.2%	\$4.83 M	3.3%	\$5.82 M	3.3%
Miscellaneous Expenses	\$1.13 M	1.7%	\$2.55 M	1.7%	\$3.02 M	1.7%
Personal Care	\$956 K	1.5%	\$2.16 M	1.5%	\$2.57 M	1.5%
Personal Insurance	\$604 K	0.9%	\$1.38 M	0.9%	\$1.66 M	0.9%
Reading	\$213 K	0.3%	\$482 K	0.3%	\$574 K	0.3%
Shelter	\$12.5 M	19.1%	\$28.3 M	19.2%	\$33.8 M	19.2%
Tobacco	\$499 K	0.8%	\$1.11 M	0.8%	\$1.30 M	0.7%
Transportation	\$13.2 M	20.3%	\$29.6 M	20.1%	\$35.4 M	20.1%
Utilities	\$4.90 M	7.5%	\$11.0 M	7.5%	\$13.0 M	7.4%

Educational Attainment (2014)

Adult Population Age 25 Years or Over	2,706		5,955		6,937	
Elementary (Grade Level 0 to 8)	131	4.9%	340	5.7%	372	5.4%
Some High School (Grade Level 9 to 11)	247	9.1%	553	9.3%	625	9.0%
High School Graduate	1,586	58.6%	3,266	54.8%	3,782	54.5%
Some College	335	12.4%	822	13.8%	971	14.0%
Associate Degree Only	126	4.7%	329	5.5%	412	5.9%
Bachelor Degree Only	164	6.1%	401	6.7%	477	6.9%
Graduate Degree	117	4.3%	244	4.1%	297	4.3%

This report was produced using data from private and government sources deemed to be reliable. The information herein is provided without representation or warranty.

EXPANDED PROFILE

2000-2010 Census, 2014 Estimates with 2019 Projections

Calculated using Proportional Block Groups

Lat/Lon: 40.6481/-83.6078

RF5

100 E Columbus St

Kenton, OH

Units In Structure (2010)

	1 Mile		3 Miles		5 Miles	
1 Detached Unit	1,200	72.2%	2,626	71.0%	3,130	74.0%
1 Attached Unit	49	3.0%	83	2.2%	89	2.1%
2 to 4 Units	220	13.2%	401	10.9%	405	9.6%
5 to 9 Units	37	2.2%	99	2.7%	100	2.4%
10 to 19 Units	68	4.1%	214	5.8%	216	5.1%
20 to 49 Units	26	1.6%	102	2.8%	102	2.4%
50 or More Units	29	1.8%	64	1.7%	64	1.5%
Mobile Home or Trailer	33	2.0%	109	2.9%	122	2.9%
Other Structure	-	-	-	-	-	-

Homes Built By Year (2010)

Homes Built 2005 or later	35	2.1%	65	1.8%	79	1.9%
Homes Built 2000 to 2004	46	2.8%	125	3.4%	160	3.8%
Homes Built 1990 to 1999	122	7.4%	312	8.4%	360	8.5%
Homes Built 1980 to 1989	117	7.0%	272	7.3%	307	7.3%
Homes Built 1970 to 1979	189	11.4%	462	12.5%	535	12.6%
Homes Built 1960 to 1969	147	8.8%	399	10.8%	452	10.7%
Homes Built 1950 to 1959	286	17.2%	566	15.3%	620	14.7%
Homes Built Before 1949	719	43.3%	1,497	40.5%	1,717	40.6%

Home Values (2010)

Home Values \$1,000,000 or More	3	0.3%	5	0.2%	5	0.2%
Home Values \$500,000 to \$999,999	17	1.7%	23	1.0%	28	1.0%
Home Values \$400,000 to \$499,999	4	0.4%	12	0.5%	24	0.9%
Home Values \$300,000 to \$399,999	7	0.7%	18	0.8%	32	1.2%
Home Values \$200,000 to \$299,999	22	2.2%	79	3.5%	140	5.1%
Home Values \$150,000 to \$199,999	76	7.5%	216	9.5%	282	10.4%
Home Values \$100,000 to \$149,999	187	18.4%	499	22.0%	671	24.7%
Home Values \$70,000 to \$99,999	365	35.9%	678	29.8%	749	27.5%
Home Values \$50,000 to \$69,999	218	21.4%	355	15.6%	383	14.1%
Home Values \$25,000 to \$49,999	80	7.9%	243	10.7%	252	9.2%
Home Values Under \$25,000	36	3.6%	144	6.3%	158	5.8%
Owner-Occupied Median Home Value	\$80,520		\$85,508		\$92,231	
Renter-Occupied Median Rent	\$390		\$382		\$385	

Transportation To Work (2010)

Drive to Work Alone	1,276	75.8%	2,516	73.8%	3,054	75.7%
Drive to Work in Carpool	288	17.1%	597	17.5%	653	16.2%
Travel to Work by Public Transportation	11	0.6%	22	0.7%	23	0.6%
Drive to Work on Motorcycle	8	0.5%	8	0.2%	8	0.2%
Walk or Bicycle to Work	60	3.6%	151	4.4%	163	4.0%
Other Means	18	1.0%	59	1.7%	60	1.5%
Work at Home	22	1.3%	58	1.7%	73	1.8%

Travel Time (2010)

Travel to Work in 14 Minutes or Less	798	48.0%	1,665	49.6%	1,885	47.6%
Travel to Work in 15 to 29 Minutes	192	11.6%	444	13.2%	646	16.3%
Travel to Work in 30 to 59 Minutes	540	32.5%	1,050	31.3%	1,205	30.4%
Travel to Work in 60 Minutes or More	131	7.9%	194	5.8%	225	5.7%
Average Minutes Travel to Work	18.8		16.7		16.8	

This report was produced using data from private and government sources deemed to be reliable. The information herein is provided without representation or warranty.