

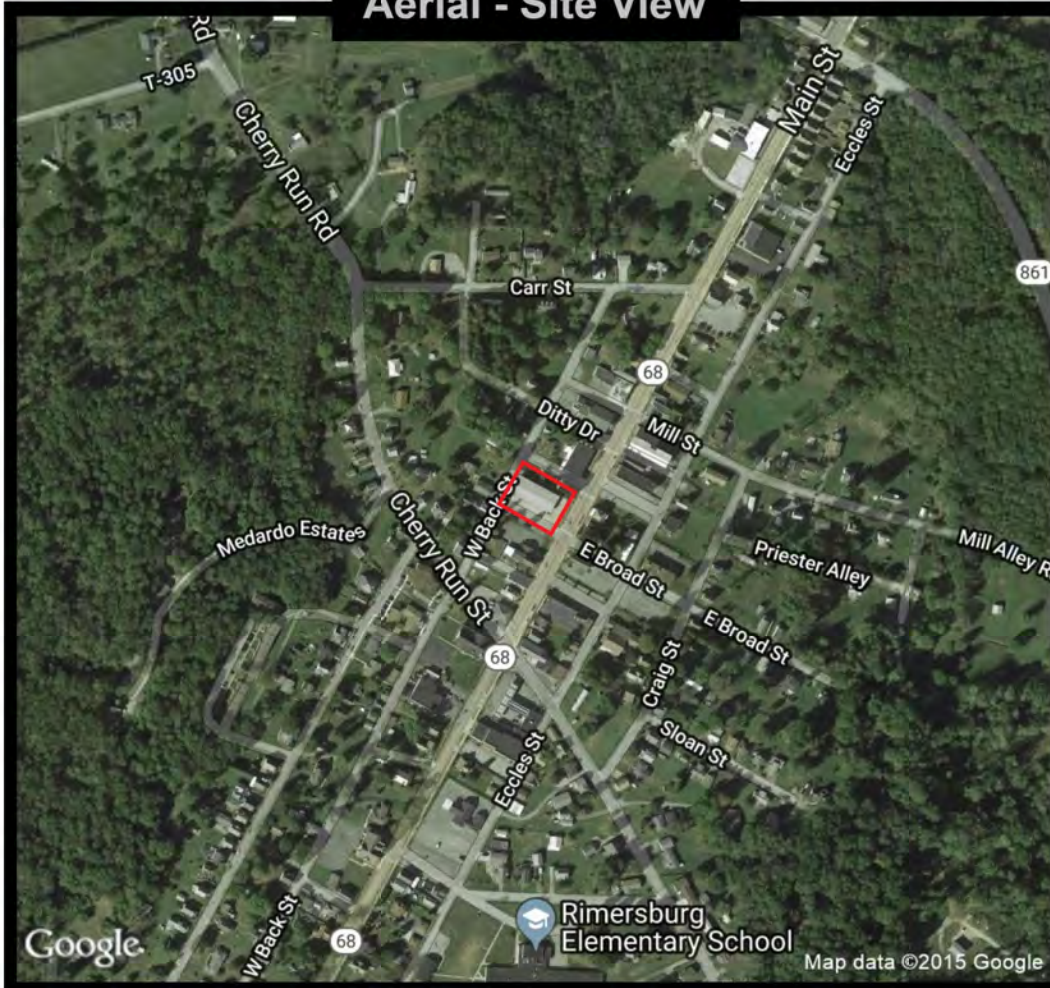
619 Main St
Rimersburg, PA 16248

\$6/sq. ft. NNN

*NNN includes but not limited to Real Estate Taxes, Insurance, and CAM (such as parking lot maintenance, snow removal, lawn care, etc.)

RETAIL SPACE FOR LEASE

Aerial - Site View



Demographic Data

	3 mi radius	5 mi radius	10 mi radius
Population (2019)	2,366	4,001	14,807
Households (2019)	1,049	1,743	6,554
Median household income (2019)	\$41,250	\$43,544	\$49,068
Total Employees	449	562	2,592
Total Establishments	83	101	443

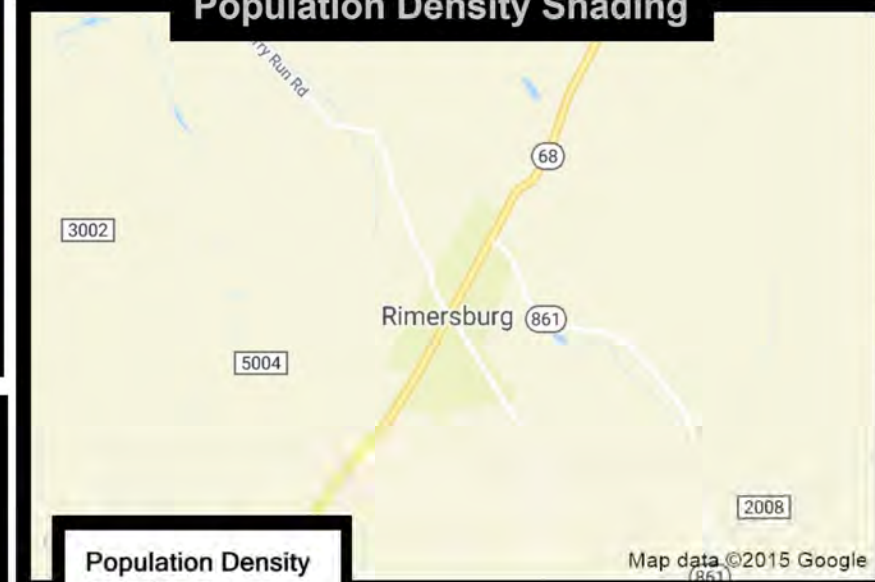


7,200 sq. ft. former Dollar General store

High visibility at corner of Main Street and Broad Street

High volume location Dollar General outgrew

Population Density Shading



Population Density

By Blockgroups

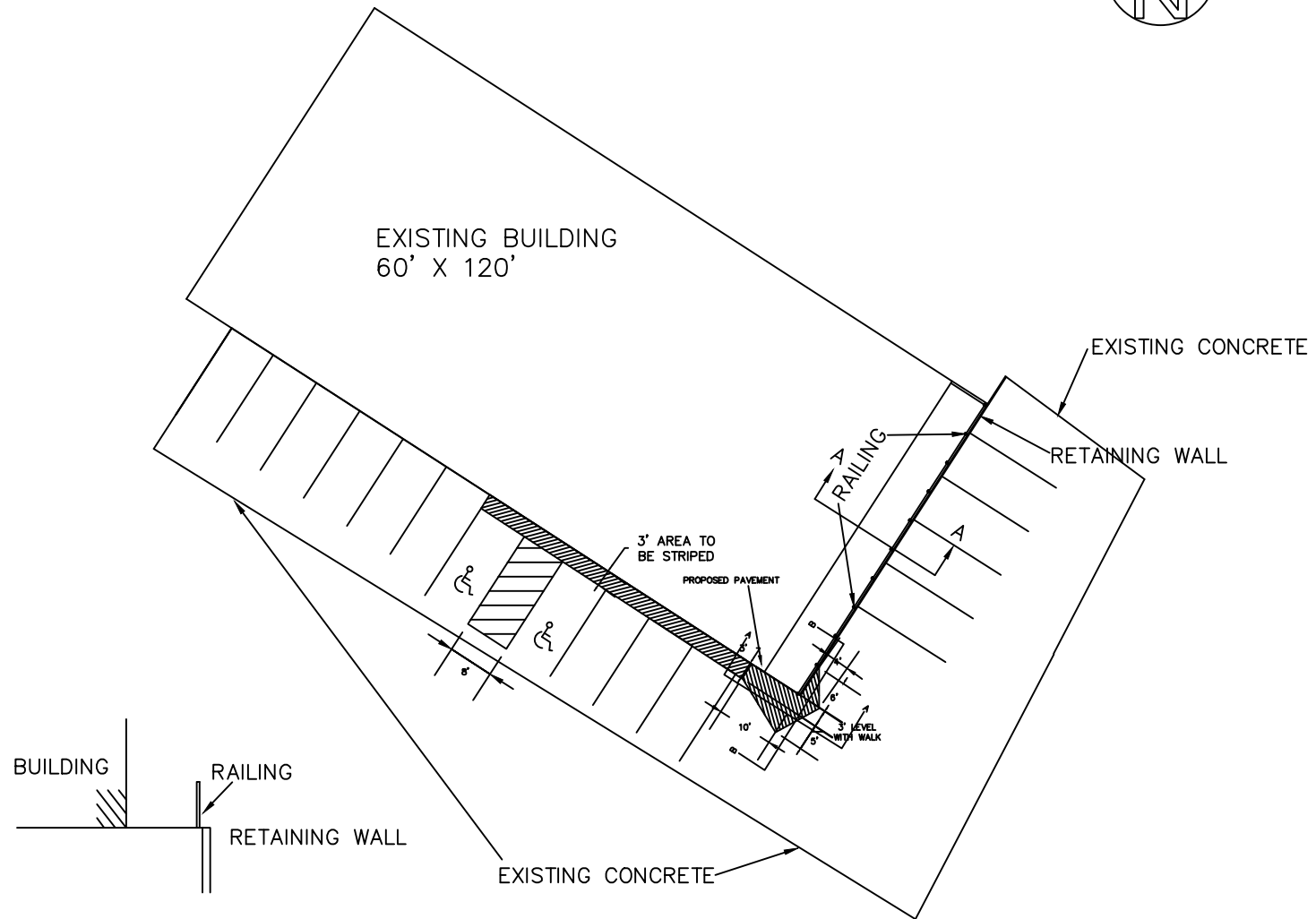
- 7,500 or more
- 5,000 to 7,500
- 2,500 to 5,000
- 1,000 to 2,500
- Less than 1,000

COCCA DEVELOPMENT, LTD

100 DEBARTOLO PLACE SUITE 400 BOARDMAN, OHIO 44512
(330) 729-1010

WWW.COCCADEVELOPMENT.COM

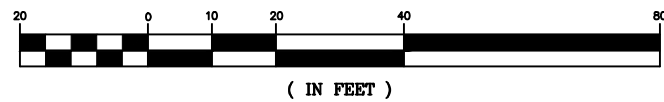
This map was produced using data from private and government sources deemed to be reliable. The information herein is provided without representation or warranty.



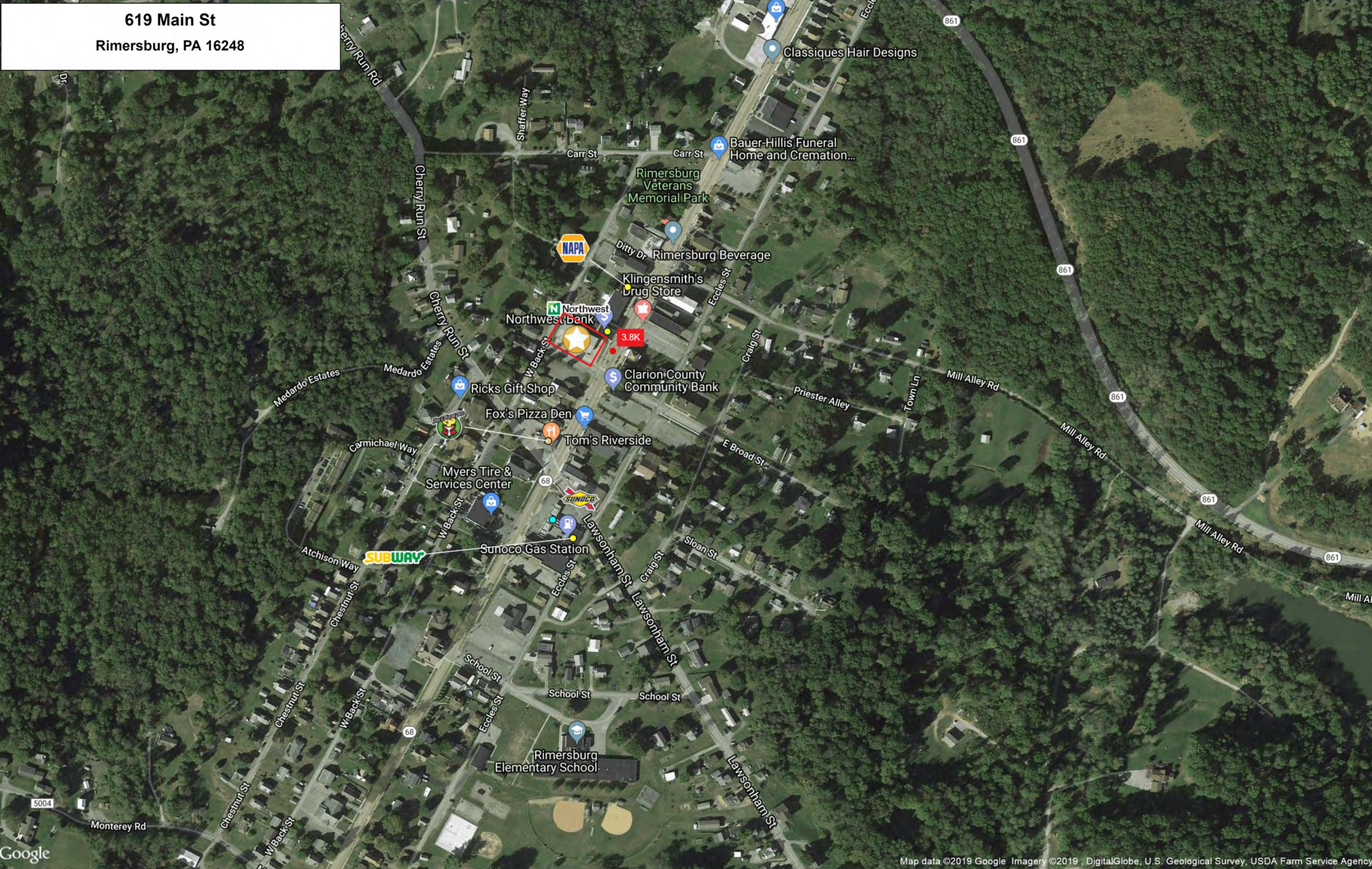
A diagram showing a cross-section of a retaining wall. On the left, a building is represented by a vertical line with diagonal hatching. To the right of the building is a horizontal line representing the ground surface. A vertical line representing the retaining wall extends downwards from the ground surface. A railing is shown as a vertical line on top of the retaining wall, with an arrow pointing to it from the label 'RAILING'. The label 'BUILDING' is above the hatched area, and 'RETAINING WALL' is to the right of the wall structure.

SECTION A-A
1"=10'

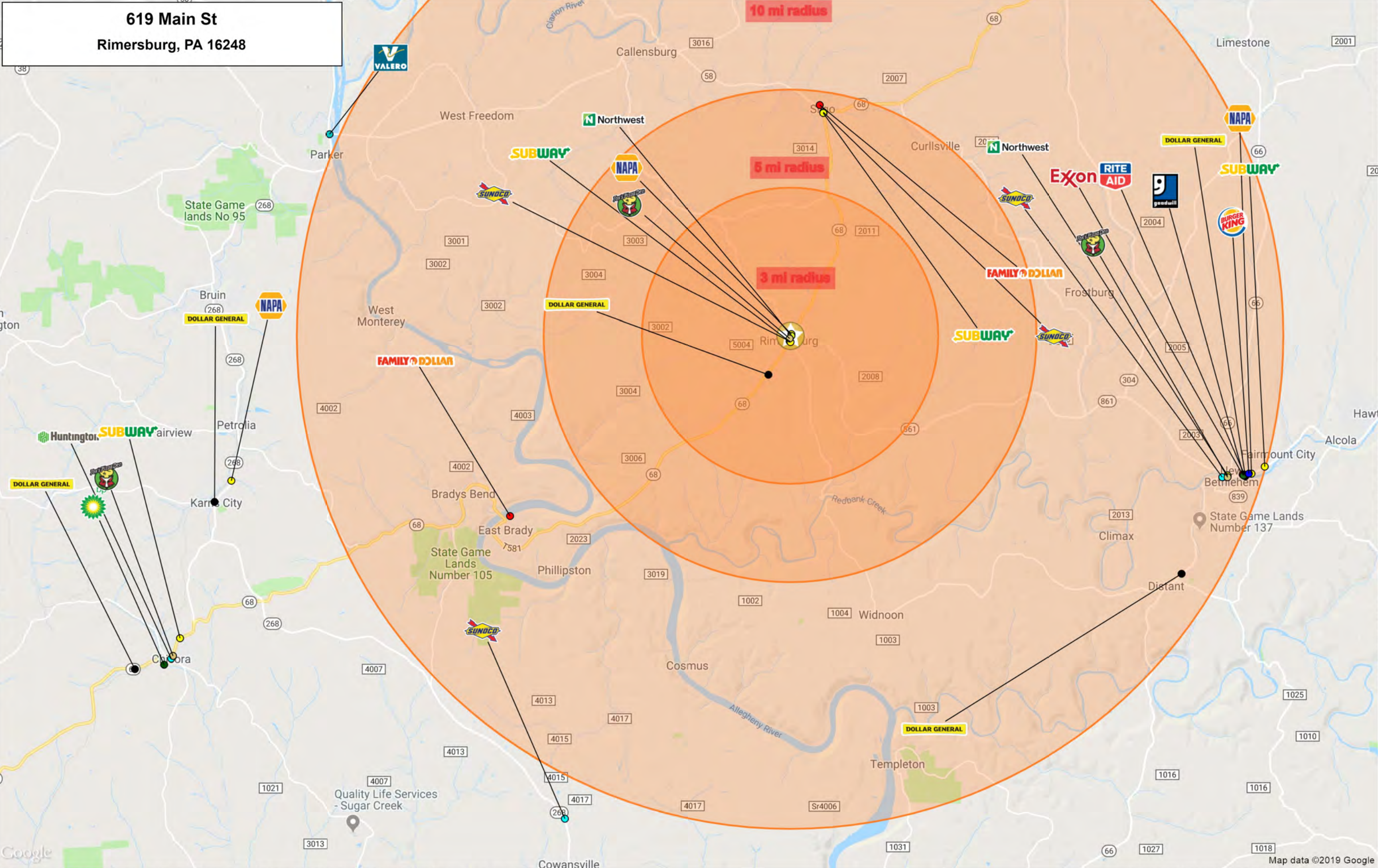
GRAPHIC SCALE



619 Main St
Rimersburg, PA 16248



619 Main St
Rimersburg, PA 16248



Logos are for identification purposes only and may be trademarks of their respective companies

Digitized by Google

Map data ©2019 Google

This map was produced using data from private and government sources deemed to be reliable. The information herein is provided without representation or warranty.

©2019, SITES USA Inc., Chandler, AZ (480) 491-1112. All Rights Reserved.

GRAPHIC PROFILE

2000-2010 Census, 2019 Estimates with 2024 Projections

Calculated using Weighted Block Centroid from Block Groups

Lat/Lon: 41.0427/-79.5027

RGRAP3

619 Main St

Rimersburg, PA 16248

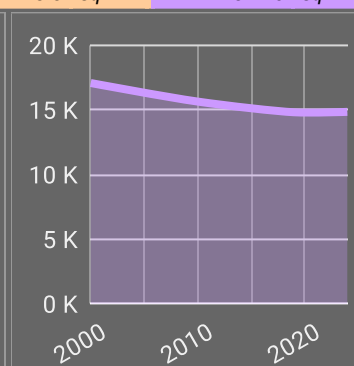
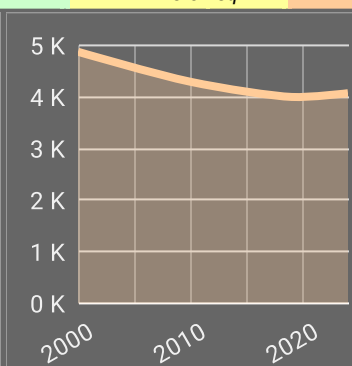
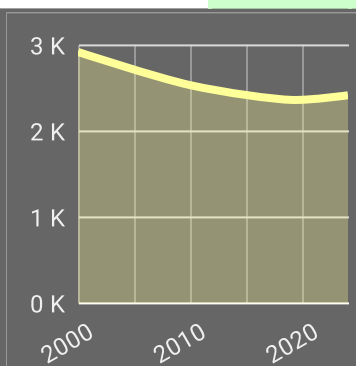
3 mi radius

5 mi radius

10 mi radius

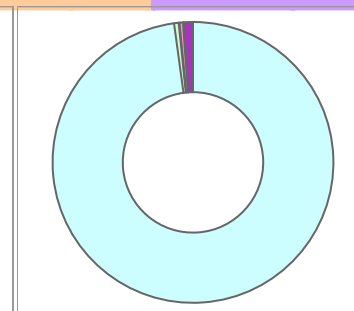
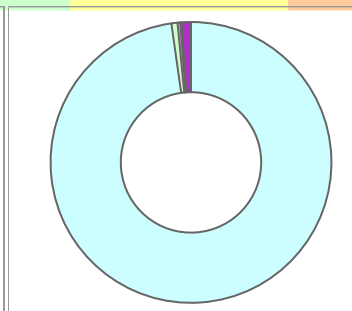
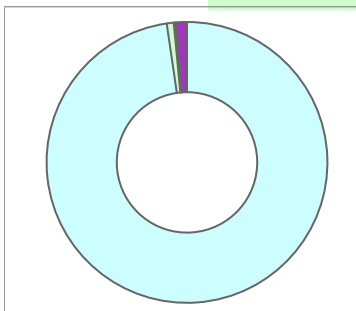
Population

Estimated Population (2019)	2,366	4,001	14,807
Projected Population (2024)	2,420	4,074	14,838
Census Population (2010)	2,537	4,295	15,633
Census Population (2000)	2,924	4,877	17,068
Projected Annual Growth (2019-2024)	54 0.5%	73 0.4%	30 -
Historical Annual Growth (2010-2019)	-171 -0.8%	-294 -0.8%	-826 -0.6%
Historical Annual Growth (2000-2010)	-387 -1.3%	-582 -1.2%	-1,435 -0.8%
Estimated Population Density (2019)	84 psm	51 psm	47 psm
Trade Area Size	28.3 sq mi	78.5 sq mi	314.0 sq mi



Race and Ethnicity (2019)

Not Hispanic or Latino Population	2,341 99.0%	3,960 99.0%	14,686 99.2%
White	2,301 98.3%	3,891 98.2%	14,412 98.1%
Black or African American	19 0.8%	28 0.7%	78 0.5%
American Indian or Alaska Native	- -	- -	9 -
Asian	5 0.2%	13 0.3%	55 0.4%
Hawaiian or Pacific Islander	- -	- -	- -
Other Race	- -	1 -	3 -
Two or More Races	16 0.7%	27 0.7%	130 0.9%
Hispanic or Latino Population	25 1.0%	40 1.0%	121 0.8%
White	9 37.9%	19 48.1%	75 61.9%
Black or African American	- -	- -	1 1.1%
American Indian or Alaska Native	- -	- -	5 4.1%
Asian	- -	- -	3 2.6%
Hispanic Hawaiian or Pacific Islander	- -	- -	- -
Other Race	4 14.2%	4 10.7%	13 10.5%
Two or More Races	12 47.8%	16 40.6%	24 19.8%



White Black or African American American Indian or Alaska Native Asian Hawaiian or Pacific Islander Other Race 2+ Races

GRAPHIC PROFILE

2000-2010 Census, 2019 Estimates with 2024 Projections

Calculated using Weighted Block Centroid from Block Groups

Lat/Lon: 41.0427/-79.5027

RGRAP3

619 Main St

Rimersburg, PA 16248

3 mi radius

5 mi radius

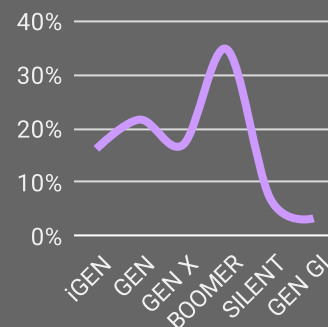
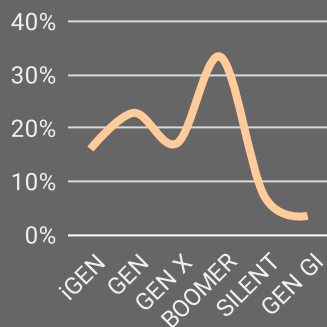
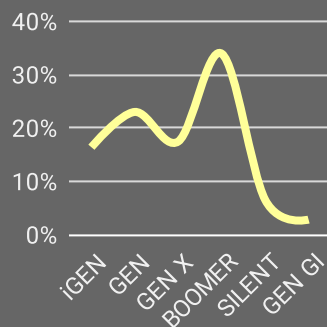
10 mi radius

Age Distribution (2019)

Age Under 5 Years	140	5.9%	229	5.7%	801	5.4%
Age 5 to 9 Years	114	4.8%	195	4.9%	771	5.2%
Age 10 to 14 Years	133	5.6%	218	5.4%	831	5.6%
Age 15 to 19 Years	120	5.1%	202	5.1%	723	4.9%
Age 20 to 24 Years	82	3.5%	152	3.8%	644	4.4%
Age 25 to 29 Years	179	7.6%	306	7.6%	997	6.7%
Age 30 to 34 Years	162	6.9%	253	6.3%	846	5.7%
Age 35 to 39 Years	145	6.1%	236	5.9%	847	5.7%
Age 40 to 44 Years	129	5.5%	211	5.3%	747	5.0%
Age 45 to 49 Years	138	5.9%	239	6.0%	927	6.3%
Age 50 to 54 Years	149	6.3%	254	6.4%	976	6.6%
Age 55 to 59 Years	191	8.1%	312	7.8%	1,168	7.9%
Age 60 to 64 Years	181	7.6%	300	7.5%	1,163	7.9%
Age 65 to 69 Years	161	6.8%	274	6.8%	1,053	7.1%
Age 70 to 74 Years	121	5.1%	192	4.8%	788	5.3%
Age 75 to 79 Years	87	3.7%	169	4.2%	596	4.0%
Age 80 to 84 Years	67	2.8%	121	3.0%	443	3.0%
Age 85 Years or Over	66	2.8%	140	3.5%	487	3.3%
Median Age	42.8		43.7		45.0	

Generation (2019)

iGeneration (Age Under 15 Years)	387	16.4%	642	16.0%	2,402	16.2%
Generation 9/11 Millennials (Age 15 to 34 Years)	544	23.0%	912	22.8%	3,210	21.7%
Gen Xers (Age 35 to 49 Years)	413	17.4%	685	17.1%	2,521	17.0%
Baby Boomers (Age 50 to 74 Years)	802	33.9%	1,332	33.3%	5,149	34.8%
Silent Generation (Age 75 to 84 Years)	154	6.5%	290	7.2%	1,039	7.0%
G.I. Generation (Age 85 Years or Over)	66	2.8%	140	3.5%	487	3.3%



This report was produced using data from private and government sources deemed to be reliable. The information herein is provided without representation or warranty.

GRAPHIC PROFILE

2000-2010 Census, 2019 Estimates with 2024 Projections

Calculated using Weighted Block Centroid from Block Groups

Lat/Lon: 41.0427/-79.5027

RGRAP3

619 Main St

Rimersburg, PA 16248

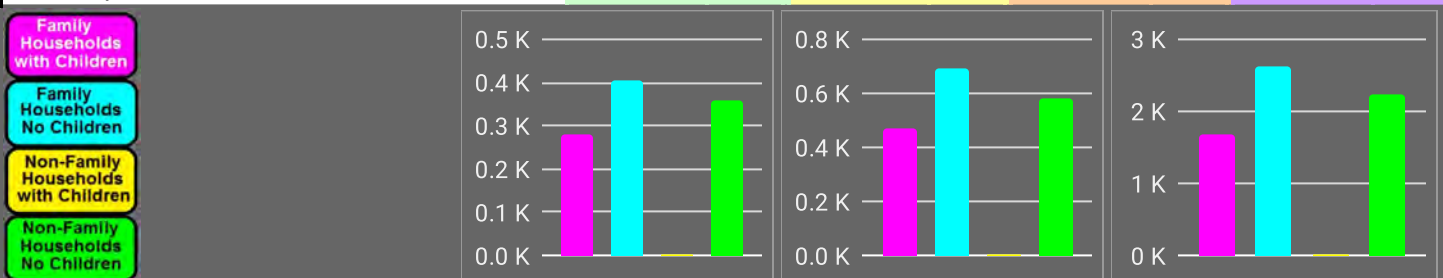
3 mi radius

5 mi radius

10 mi radius

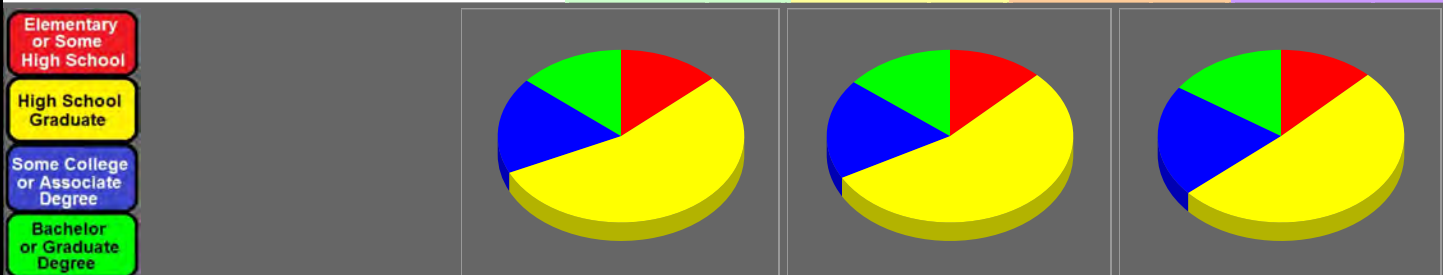
Household Type (2019)

Total Households	1,049	1,743	6,554
Family Households	685 65.3%	1,156 66.4%	4,305 65.7%
Family Households with Children	279 40.8%	467 40.4%	1,678 39.0%
Family Households No Children	406 59.2%	689 59.6%	2,626 61.0%
Non-Family Households	364 34.7%	586 33.6%	2,249 34.3%
Non-Family Households with Children	4 1.0%	7 1.2%	26 1.2%
Non-Family Households No Children	360 99.0%	579 98.8%	2,223 98.8%



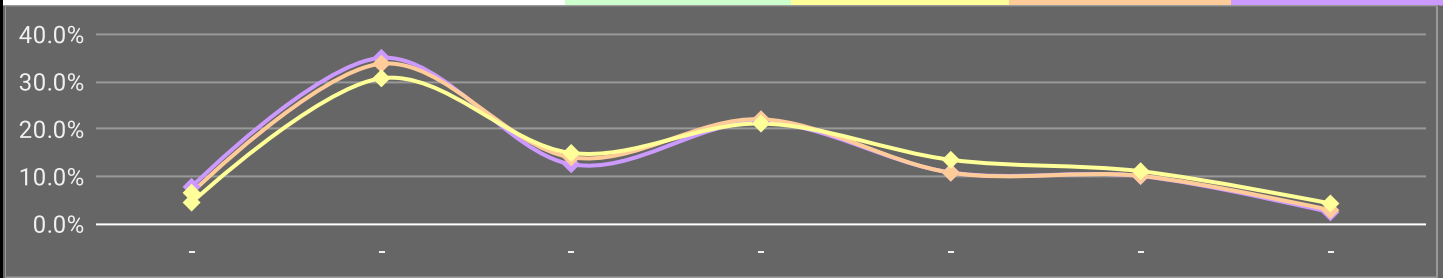
Education Attainment (2019)

Elementary or Some High School	236 13.3%	375 12.5%	1,372 12.4%
High School Graduate	972 54.7%	1,638 54.5%	5,641 51.1%
Some College or Associate Degree	321 18.1%	563 18.7%	2,311 20.9%
Bachelor or Graduate Degree	247 13.9%	429 14.3%	1,713 15.5%



Household Income (2019)

Estimated Average Household Income	\$52,033	\$52,200	\$59,019
Estimated Median Household Income	\$41,250	\$43,544	\$49,068
HH Income Under \$10,000	82 7.8%	113 6.5%	292 4.5%
HH Income \$10,000 to \$34,999	367 35.0%	588 33.8%	2,010 30.7%
HH Income \$35,000 to \$49,999	132 12.5%	244 14.0%	978 14.9%
HH Income \$50,000 to \$74,999	225 21.4%	384 22.0%	1,385 21.1%
HH Income \$75,000 to \$99,999	113 10.8%	188 10.8%	884 13.5%
HH Income \$100,000 to \$149,999	105 10.1%	176 10.1%	726 11.1%
HH Income \$150,000 or More	25 2.4%	50 2.8%	279 4.3%



This report was produced using data from private and government sources deemed to be reliable. The information herein is provided without representation or warranty.

EXPANDED PROFILE

2000-2010 Census, 2019 Estimates with 2024 Projections

Calculated using Weighted Block Centroid from Block Groups

Lat/Lon: 41.0427/-79.5027

RF5

619 Main St

Rimersburg, PA 16248

Rimersburg, PA 16248		3 mi radius		5 mi radius		10 mi radius	
Population							
Estimated Population (2019)	2,366		4,001		14,807		
Projected Population (2024)	2,420		4,074		14,838		
Census Population (2010)	2,537		4,295		15,633		
Census Population (2000)	2,924		4,877		17,068		
Projected Annual Growth (2019 to 2024)	54	0.5%	73	0.4%	30	-	
Historical Annual Growth (2010 to 2019)	-171	-0.8%	-294	-0.8%	-826	-0.6%	
Historical Annual Growth (2000 to 2010)	-387	-1.3%	-582	-1.2%	-1,435	-0.8%	
Estimated Population Density (2019)	84	psm	51	psm	47	psm	
Trade Area Size	28.3	sq mi	78.5	sq mi	314.0	sq mi	
Households							
Estimated Households (2019)	1,049		1,743		6,554		
Projected Households (2024)	1,103		1,826		6,748		
Census Households (2010)	1,046		1,735		6,415		
Census Households (2000)	1,169		1,883		6,764		
Estimated Households with Children (2019)	283	27.0%	474	27.2%	1,704	26.0%	
Estimated Average Household Size (2019)	2.25		2.27		2.24		
Average Household Income							
Estimated Average Household Income (2019)	\$52,033		\$52,200		\$59,019		
Projected Average Household Income (2024)	\$57,461		\$57,703		\$66,877		
Estimated Average Family Income (2019)	\$63,605		\$63,070		\$73,323		
Median Household Income							
Estimated Median Household Income (2019)	\$41,250		\$43,544		\$49,068		
Projected Median Household Income (2024)	\$47,608		\$50,137		\$57,093		
Estimated Median Family Income (2019)	\$54,717		\$55,677		\$62,837		
Per Capita Income							
Estimated Per Capita Income (2019)	\$23,091		\$22,825		\$26,188		
Projected Per Capita Income (2024)	\$26,197		\$25,945		\$30,480		
Estimated Per Capita Income 5 Year Growth	\$3,106	13.5%	\$3,121	13.7%	\$4,292	16.4%	
Estimated Average Household Net Worth (2019)	\$302,605		\$322,372		\$399,754		
Daytime Demos (2019)							
Total Businesses	83		101		443		
Total Employees	449		562		2,592		
Company Headquarter Businesses	-	-	-	-	-	-	
Company Headquarter Employees	-	-	-	-	-	-	
Employee Population per Business	5.4		5.6		5.9		
Residential Population per Business	28.4		39.5		33.4		

This report was produced using data from private and government sources deemed to be reliable. The information herein is provided without representation or warranty.

EXPANDED PROFILE

2000-2010 Census, 2019 Estimates with 2024 Projections

Calculated using Weighted Block Centroid from Block Groups

Lat/Lon: 41.0427/-79.5027

RF5

619 Main St

Rimersburg, PA 16248

Race & Ethnicity

	3 mi radius		5 mi radius		10 mi radius	
White (2019)	2,310	97.6%	3,911	97.7%	14,487	97.8%
Black or African American (2019)	19	0.8%	28	0.7%	79	0.5%
American Indian or Alaska Native (2019)	-	-	-	-	14	-
Asian (2019)	5	0.2%	13	0.3%	58	0.4%
Hawaiian or Pacific Islander (2019)	-	-	-	-	-	-
Other Race (2019)	5	0.2%	5	0.1%	16	0.1%
Two or More Races (2019)	27	1.2%	43	1.1%	153	1.0%
Not Hispanic or Latino Population (2019)	2,341	99.0%	3,960	99.0%	14,686	99.2%
Hispanic or Latino Population (2019)	25	1.0%	40	1.0%	121	0.8%
Not Hispanic or Latino Population (2024)	2,394	98.9%	4,032	99.0%	14,708	99.1%
Hispanic or Latino Population (2024)	26	1.1%	42	1.0%	130	0.9%
Not Hispanic or Latino Population (2010)	2,524	99.5%	4,274	99.5%	15,576	99.6%
Hispanic or Latino Population (2010)	13	0.5%	21	0.5%	57	0.4%
Not Hispanic or Latino Population (2000)	2,915	99.7%	4,857	99.6%	17,011	99.7%
Hispanic or Latino Population (2000)	9	0.3%	20	0.4%	58	0.3%
Projected Hispanic Annual Growth (2019 to 2024)	2	1.3%	1	0.5%	9	1.5%
Historic Hispanic Annual Growth (2000 to 2019)	16	9.8%	21	5.5%	63	5.8%

Age Distribution (2019)

Age Under 5	140	5.9%	229	5.7%	801	5.4%
Age 5 to 9 Years	114	4.8%	195	4.9%	771	5.2%
Age 10 to 14 Years	133	5.6%	218	5.4%	831	5.6%
Age 15 to 19 Years	120	5.1%	202	5.1%	723	4.9%
Age 20 to 24 Years	82	3.5%	152	3.8%	644	4.4%
Age 25 to 29 Years	179	7.6%	306	7.6%	997	6.7%
Age 30 to 34 Years	162	6.9%	253	6.3%	846	5.7%
Age 35 to 39 Years	145	6.1%	236	5.9%	847	5.7%
Age 40 to 44 Years	129	5.5%	211	5.3%	747	5.0%
Age 45 to 49 Years	138	5.9%	239	6.0%	927	6.3%
Age 50 to 54 Years	149	6.3%	254	6.4%	976	6.6%
Age 55 to 59 Years	191	8.1%	312	7.8%	1,168	7.9%
Age 60 to 64 Years	181	7.6%	300	7.5%	1,163	7.9%
Age 65 to 74 Years	282	11.9%	466	11.6%	1,841	12.4%
Age 75 to 84 Years	154	6.5%	290	7.2%	1,039	7.0%
Age 85 Years or Over	66	2.8%	140	3.5%	487	3.3%
Median Age	42.8		43.7		45.0	

Gender Age Distribution (2019)

Female Population	1,184	50.0%	2,015	50.4%	7,432	50.2%
Age 0 to 19 Years	233	19.6%	403	20.0%	1,519	20.4%
Age 20 to 64 Years	674	56.9%	1,110	55.1%	4,042	54.4%
Age 65 Years or Over	277	23.4%	501	24.9%	1,872	25.2%
Female Median Age	43.8		45.0		46.1	
Male Population	1,182	50.0%	1,986	49.6%	7,375	49.8%
Age 0 to 19 Years	275	23.3%	440	22.2%	1,607	21.8%
Age 20 to 64 Years	682	57.7%	1,151	57.9%	4,274	57.9%
Age 65 Years or Over	225	19.0%	395	19.9%	1,495	20.3%
Male Median Age	41.6		42.3		43.8	

This report was produced using data from private and government sources deemed to be reliable. The information herein is provided without representation or warranty.

EXPANDED PROFILE

2000-2010 Census, 2019 Estimates with 2024 Projections

Calculated using Weighted Block Centroid from Block Groups

Lat/Lon: 41.0427/-79.5027

RF5

619 Main St

Rimersburg, PA 16248

3 mi radius

5 mi radius

10 mi radius

Household Income Distribution (2019)

HH Income \$200,000 or More	5	0.5%	12	0.7%	113	1.7%
HH Income \$150,000 to \$199,999	20	1.9%	38	2.2%	166	2.5%
HH Income \$100,000 to \$149,999	105	10.1%	176	10.1%	726	11.1%
HH Income \$75,000 to \$99,999	113	10.8%	188	10.8%	884	13.5%
HH Income \$50,000 to \$74,999	225	21.4%	384	22.0%	1,385	21.1%
HH Income \$35,000 to \$49,999	132	12.5%	244	14.0%	978	14.9%
HH Income \$25,000 to \$34,999	113	10.7%	208	11.9%	697	10.6%
HH Income \$15,000 to \$24,999	185	17.6%	280	16.0%	950	14.5%
HH Income Under \$15,000	151	14.4%	214	12.3%	657	10.0%
HH Income \$35,000 or More	600	57.2%	1,041	59.7%	4,251	64.9%
HH Income \$75,000 or More	244	23.2%	413	23.7%	1,889	28.8%

Housing (2019)

Total Housing Units	1,235		2,045		8,075	
Housing Units Occupied	1,049	84.9%	1,743	85.2%	6,554	81.2%
Housing Units Owner-Occupied	728	69.4%	1,239	71.1%	4,835	73.8%
Housing Units, Renter-Occupied	321	30.6%	503	28.9%	1,719	26.2%
Housing Units, Vacant	186	17.7%	303	17.4%	1,521	23.2%

Marital Status (2019)

Never Married	573	29.0%	953	28.4%	3,330	26.8%
Currently Married	882	44.6%	1,538	45.8%	6,405	51.6%
Separated	87	4.4%	132	3.9%	407	3.3%
Widowed	211	10.7%	370	11.0%	1,164	9.4%
Divorced	226	11.4%	367	10.9%	1,099	8.9%

Household Type (2019)

Population Family	1,924	81.3%	3,244	81.1%	12,062	81.5%
Population Non-Family	439	18.6%	706	17.7%	2,604	17.6%
Population Group Quarters	3	0.1%	51	1.3%	142	1.0%
Family Households	685	65.3%	1,156	66.4%	4,305	65.7%
Non-Family Households	364	34.7%	586	33.6%	2,249	34.3%
Married Couple with Children	173	19.7%	309	20.1%	1,197	18.7%
Average Family Household Size	2.8		2.8		2.8	

Household Size (2019)

1 Person Households	309	29.4%	499	28.7%	1,967	30.0%
2 Person Households	410	39.1%	685	39.3%	2,553	39.0%
3 Person Households	160	15.3%	265	15.2%	904	13.8%
4 Person Households	101	9.7%	176	10.1%	711	10.8%
5 Person Households	45	4.3%	77	4.4%	278	4.2%
6 or More Person Households	24	2.3%	40	2.3%	141	2.2%

Household Vehicles (2019)

Households with 0 Vehicles Available	53	5.0%	84	4.8%	481	7.3%
Households with 1 Vehicles Available	351	33.5%	593	34.0%	2,063	31.5%
Households with 2 or More Vehicles Available	645	61.5%	1,066	61.2%	4,009	61.2%
Total Vehicles Available	1,964		3,275		12,150	
Average Vehicles Per Household	1.9		1.9		1.9	

This report was produced using data from private and government sources deemed to be reliable. The information herein is provided without representation or warranty.

EXPANDED PROFILE

2000-2010 Census, 2019 Estimates with 2024 Projections

Calculated using Weighted Block Centroid from Block Groups

Lat/Lon: 41.0427/-79.5027

RF5

619 Main St

Rimersburg, PA 16248

3 mi radius

5 mi radius

10 mi radius

Labor Force (2019)

Estimated Labor Population Age 16 Years or Over	1,959		3,328		12,275	
Estimated Civilian Employed	995	50.8%	1,665	50.0%	6,384	52.0%
Estimated Civilian Unemployed	61	3.1%	91	2.7%	297	2.4%
Estimated in Armed Forces	-	-	-	-	3	-
Estimated Not in Labor Force	903	46.1%	1,572	47.2%	5,591	45.5%
Unemployment Rate	3.1%		2.7%		2.4%	

Occupation (2019)

Occupation: Population Age 16 Years or Over	995		1,665		6,384	
Management, Business, Financial Operations	80	8.0%	129	7.7%	557	8.7%
Professional, Related	178	17.9%	283	17.0%	1,116	17.5%
Service	262	26.3%	422	25.4%	1,409	22.1%
Sales, Office	200	20.1%	329	19.7%	1,208	18.9%
Farming, Fishing, Forestry	2	0.2%	6	0.3%	33	0.5%
Construct, Extraction, Maintenance	144	14.5%	240	14.4%	885	13.9%
Production, Transport Material Moving	130	13.0%	257	15.4%	1,177	18.4%
White Collar Workers	458	46.0%	740	44.5%	2,881	45.1%
Blue Collar Workers	537	54.0%	925	55.5%	3,503	54.9%

Consumer Expenditure (2019)

Total Household Expenditure	\$47.13 M		\$78.45 M		\$320.63 M	
Total Non-Retail Expenditure	\$24.82 M	52.7%	\$41.3 M	52.6%	\$168.79 M	52.6%
Total Retail Expenditure	\$22.31 M	47.3%	\$37.16 M	47.4%	\$151.83 M	47.4%
Apparel	\$1.61 M	3.4%	\$2.68 M	3.4%	\$10.97 M	3.4%
Contributions	\$1.45 M	3.1%	\$2.43 M	3.1%	\$10.07 M	3.1%
Education	\$1.22 M	2.6%	\$2.02 M	2.6%	\$8.37 M	2.6%
Entertainment	\$2.58 M	5.5%	\$4.31 M	5.5%	\$17.71 M	5.5%
Food and Beverages	\$7.05 M	14.9%	\$11.71 M	14.9%	\$47.72 M	14.9%
Furnishings and Equipment	\$1.61 M	3.4%	\$2.68 M	3.4%	\$11.04 M	3.4%
Gifts	\$1.06 M	2.3%	\$1.78 M	2.3%	\$7.4 M	2.3%
Health Care	\$4.18 M	8.9%	\$6.97 M	8.9%	\$28.41 M	8.9%
Household Operations	\$1.82 M	3.9%	\$3.03 M	3.9%	\$12.43 M	3.9%
Miscellaneous Expenses	\$884.78 K	1.9%	\$1.48 M	1.9%	\$6.05 M	1.9%
Personal Care	\$630.88 K	1.3%	\$1.05 M	1.3%	\$4.3 M	1.3%
Personal Insurance	\$307.62 K	0.7%	\$515.14 K	0.7%	\$2.14 M	0.7%
Reading	\$102.56 K	0.2%	\$171.07 K	0.2%	\$702.39 K	0.2%
Shelter	\$9.98 M	21.2%	\$16.58 M	21.1%	\$67.56 M	21.1%
Tobacco	\$332.23 K	0.7%	\$548.41 K	0.7%	\$2.18 M	0.7%
Transportation	\$8.59 M	18.2%	\$14.33 M	18.3%	\$58.57 M	18.3%
Utilities	\$3.72 M	7.9%	\$6.18 M	7.9%	\$24.99 M	7.8%

Educational Attainment (2019)

Adult Population Age 25 Years or Over	1,777		3,005		11,038	
Elementary (Grade Level 0 to 8)	82	4.6%	120	4.0%	399	3.6%
Some High School (Grade Level 9 to 11)	155	8.7%	255	8.5%	973	8.8%
High School Graduate	972	54.7%	1,638	54.5%	5,641	51.1%
Some College	198	11.1%	337	11.2%	1,407	12.7%
Associate Degree Only	123	6.9%	226	7.5%	904	8.2%
Bachelor Degree Only	154	8.7%	272	9.0%	1,051	9.5%
Graduate Degree	92	5.2%	157	5.2%	662	6.0%

This report was produced using data from private and government sources deemed to be reliable. The information herein is provided without representation or warranty.

EXPANDED PROFILE

2000-2010 Census, 2019 Estimates with 2024 Projections

Calculated using Weighted Block Centroid from Block Groups

Lat/Lon: 41.0427/-79.5027

RF5

619 Main St

Rimersburg, PA 16248

Units In Structure (2019)

	3 mi radius		5 mi radius		10 mi radius	
1 Detached Unit	868	82.9%	1,464	84.4%	5,341	83.3%
1 Attached Unit	-	-	2	0.1%	43	0.7%
2 to 4 Units	44	4.2%	70	4.0%	224	3.5%
5 to 9 Units	27	2.6%	29	1.7%	72	1.1%
10 to 19 Units	15	1.4%	16	0.9%	81	1.3%
20 to 49 Units	11	1.1%	11	0.6%	60	0.9%
50 or More Units	1	0.1%	3	0.2%	138	2.2%
Mobile Home or Trailer	80	7.6%	144	8.3%	591	9.2%
Other Structure	3	0.3%	4	0.2%	5	-

Homes Built By Year (2019)

Homes Built 2010 or later	20	1.9%	30	1.8%	194	3.0%
Homes Built 2000 to 2009	77	7.4%	121	7.0%	547	8.5%
Homes Built 1990 to 1999	57	5.4%	110	6.4%	604	9.4%
Homes Built 1980 to 1989	103	9.9%	153	8.8%	533	8.3%
Homes Built 1970 to 1979	138	13.2%	237	13.7%	780	12.2%
Homes Built 1960 to 1969	67	6.4%	133	7.6%	464	7.2%
Homes Built 1950 to 1959	119	11.3%	193	11.1%	730	11.4%
Homes Built Before 1949	468	44.7%	765	44.1%	2,702	42.1%

Home Values (2019)

Home Values \$1,000,000 or More	-	-	2	0.2%	51	1.1%
Home Values \$500,000 to \$999,999	8	1.2%	19	1.5%	103	2.2%
Home Values \$400,000 to \$499,999	3	0.5%	7	0.5%	62	1.3%
Home Values \$300,000 to \$399,999	12	1.7%	25	2.0%	199	4.2%
Home Values \$200,000 to \$299,999	32	4.4%	78	6.4%	584	12.4%
Home Values \$150,000 to \$199,999	85	11.8%	145	11.9%	554	11.7%
Home Values \$100,000 to \$149,999	121	16.8%	210	17.2%	738	15.6%
Home Values \$70,000 to \$99,999	190	26.4%	308	25.2%	1,140	24.1%
Home Values \$50,000 to \$69,999	112	15.6%	175	14.3%	651	13.8%
Home Values \$25,000 to \$49,999	118	16.4%	194	15.9%	483	10.2%
Home Values Under \$25,000	46	6.3%	77	6.3%	267	5.7%
Owner-Occupied Median Home Value	\$83,650		\$87,234		\$104,451	
Renter-Occupied Median Rent	\$442		\$444		\$446	

Transportation To Work (2019)

Drive to Work Alone	891	83.3%	1,519	83.9%	5,622	83.3%
Drive to Work in Carpool	110	10.3%	168	9.3%	582	8.6%
Travel to Work by Public Transportation	-	-	2	0.1%	12	0.2%
Drive to Work on Motorcycle	2	0.2%	3	0.2%	5	-
Walk or Bicycle to Work	29	2.7%	58	3.2%	228	3.4%
Other Means	7	0.7%	12	0.7%	79	1.2%
Work at Home	31	2.9%	48	2.6%	225	3.3%

Travel Time (2019)

Travel to Work in 14 Minutes or Less	282	26.3%	455	25.1%	1,381	20.4%
Travel to Work in 15 to 29 Minutes	296	27.7%	512	28.3%	1,908	28.3%
Travel to Work in 30 to 59 Minutes	294	27.5%	493	27.3%	2,151	31.9%
Travel to Work in 60 Minutes or More	94	8.8%	159	8.8%	727	10.8%
Average Minutes Travel to Work	23.6		23.7		26.2	

This report was produced using data from private and government sources deemed to be reliable. The information herein is provided without representation or warranty.