

4857 State Route 93

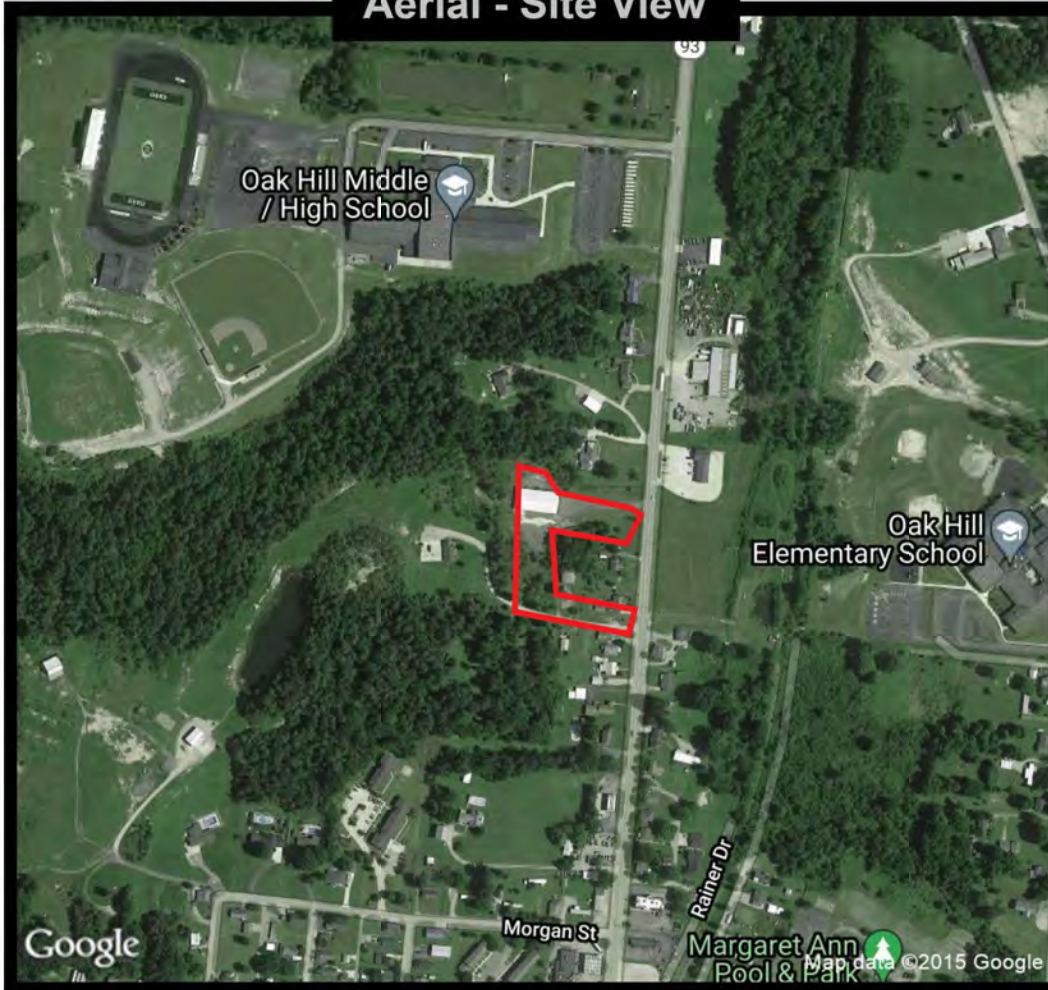
Oak Hill, OH 45656

\$5/sf + NNN*

*\$1/sf NNN includes but not limited to Real Estate Taxes, Insurance, and CAM (such as parking lot maintenance, snow removal, lawn care, etc.)

RETAIL SPACE FOR LEASE

Aerial - Site View



8,125 sf building - never occupied

Approximately 2.66 acres total

All utilities run & HVAC installed

Large parking lot & pylon street sign

Population Density Shading



Demographic Data

	3 mi radius	5 mi radius	10 mi radius
Population (2021)	3,658	5,798	14,017
Households (2021)	1,440	2,248	5,387
Median household income (2021)	\$50,348	\$51,656	\$52,684
Total Employees	805	1,032	3,731
Total Establishments	78	97	346

Population Density

By Blockgroups

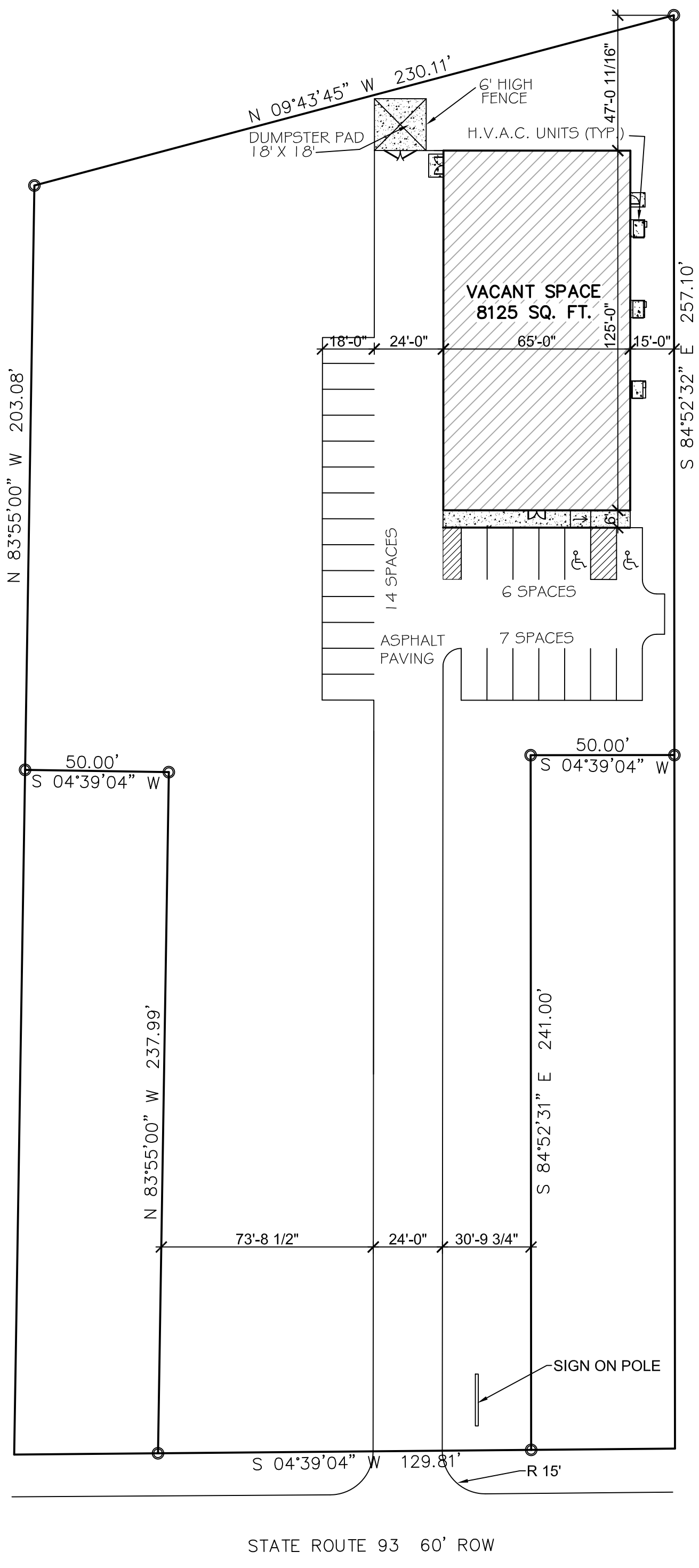
- 7,500 or more
- 5,000 to 7,500
- 2,500 to 5,000
- 1,000 to 2,500
- Less than 1,000

COCCA DEVELOPMENT, LTD

100 DEBARTOLO PLACE SUITE 400 BOARDMAN, OHIO 44512
(330) 729-1010

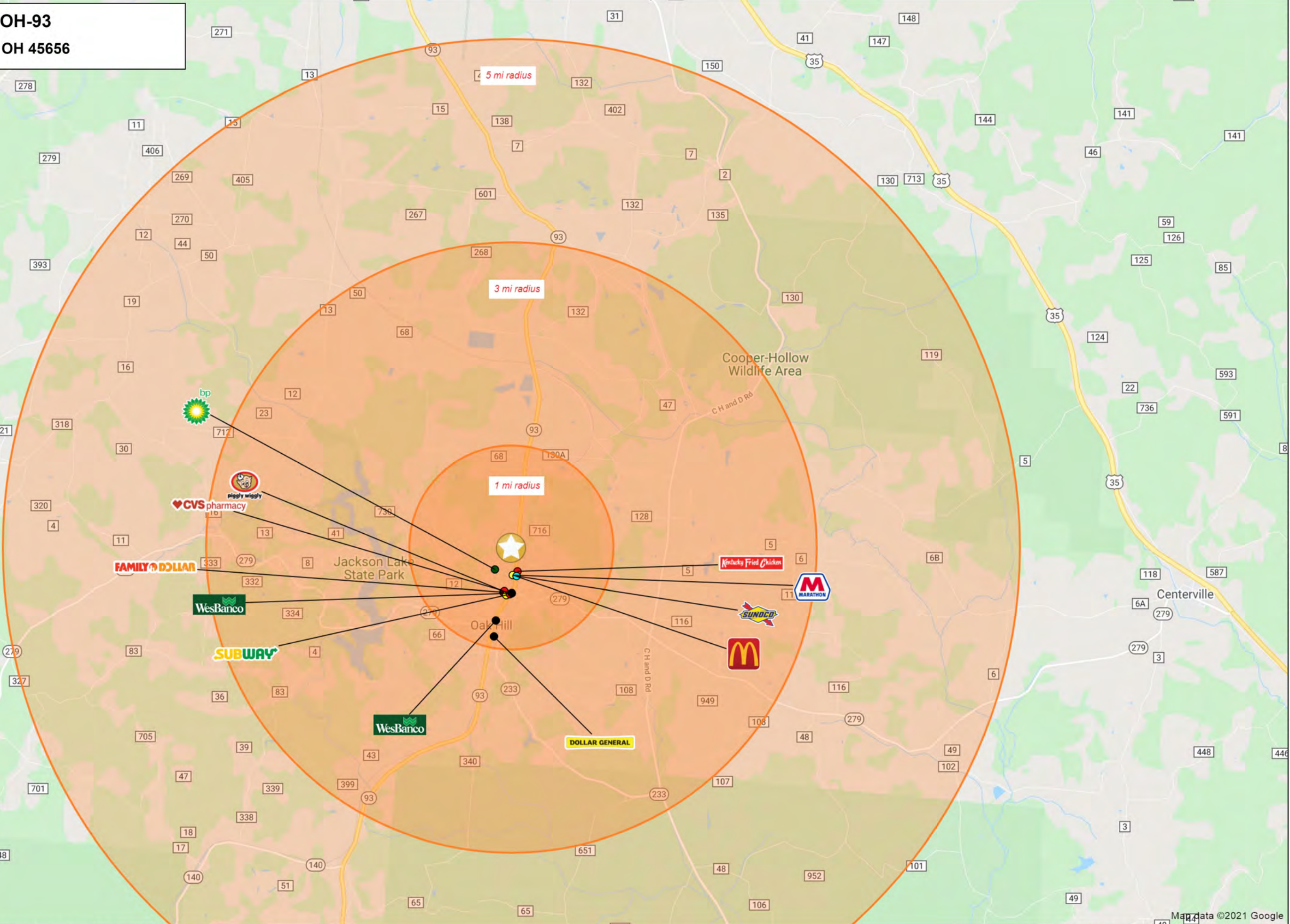
WWW.COCCADEVELOPMENT.COM

This map was produced using data from private and government sources deemed to be reliable. The information herein is provided without representation or warranty.

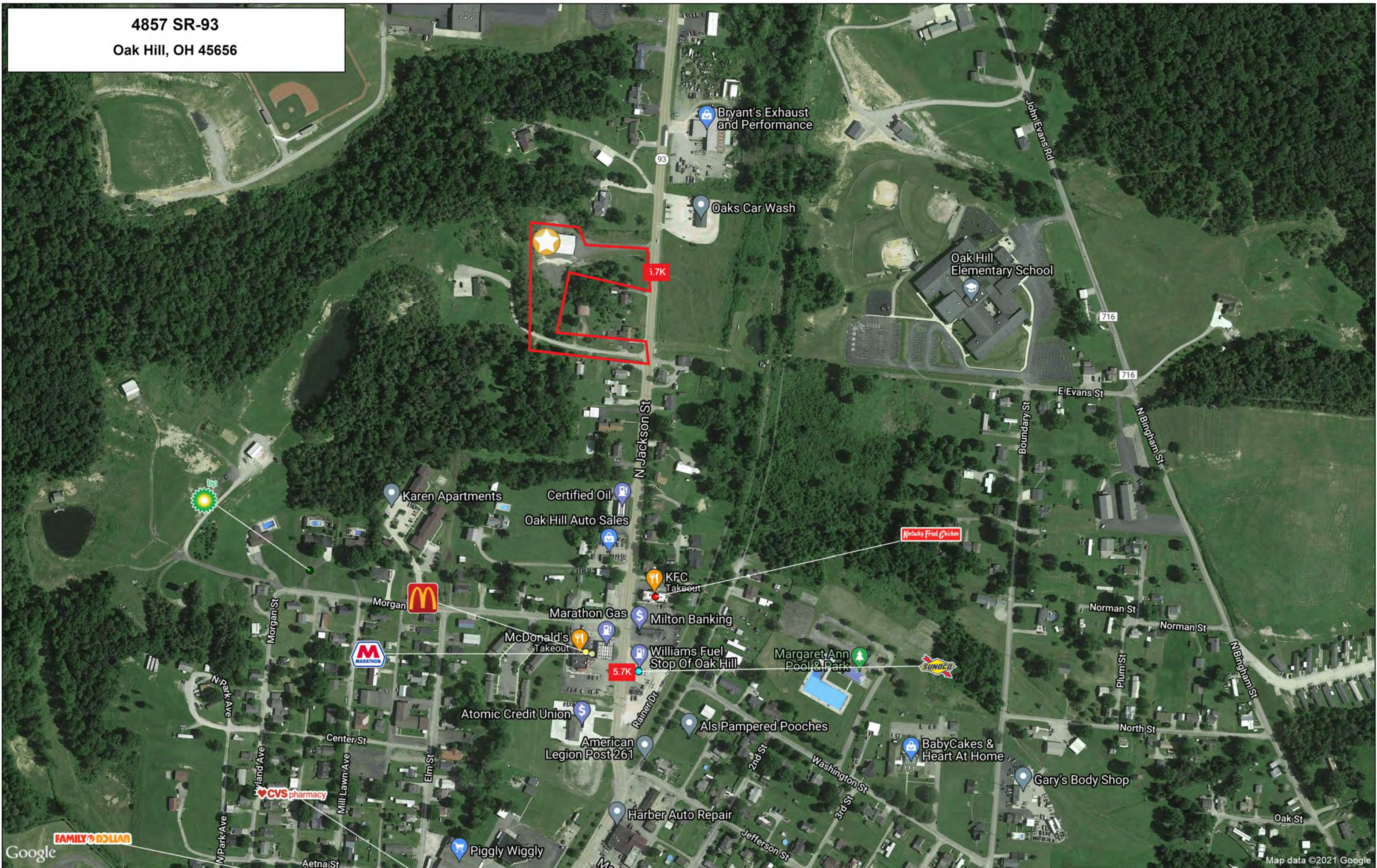


STATE ROUTE 93 60' ROW

4857 OH-93
Oak Hill, OH 45656

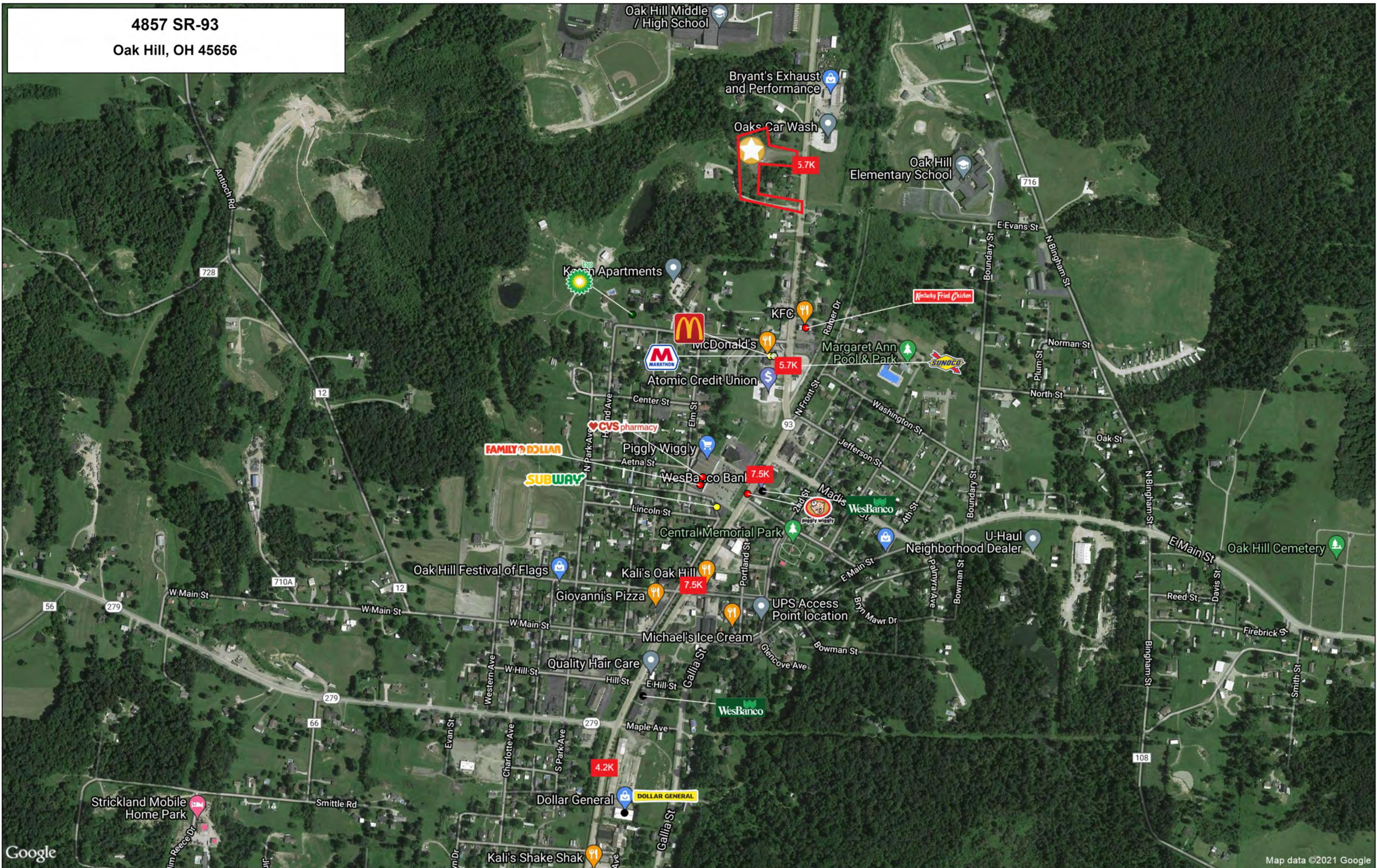


4857 SR-93
Oak Hill, OH 45656



Lat: 38.90297 Long: -82.56834 Zoom: 17
Logos are for identification purposes only and may be trademarks of their respective companies.

4857 SR-93
Oak Hill, OH 45656



Lat: 38.89939 Long: -82.57159 Zoom: 16

Logos are for identification purposes only and may be trademarks of their respective companies.

Google

Map data ©2021 Google

This map was produced using data from private and government sources deemed to be reliable. The information herein is provided without representation or warranty

©2021, SITES USA Inc., Chandler, AZ (480) 491-1112. All Rights Reserved.

GRAPHIC PROFILE

2000-2010 Census, 2021 Estimates with 2026 Projections

Calculated using Weighted Block Centroid from Block Groups

Lat/Lon: 38.9048/-82.57

RGRAP3

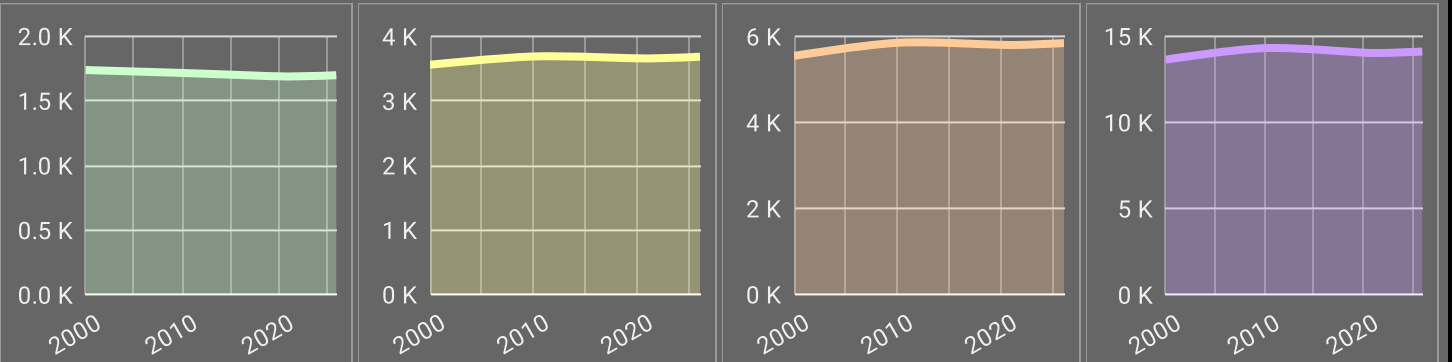
4857 OH-93

Oak Hill, OH 45656

1 mi radius 3 mi radius 5 mi radius 10 mi radius

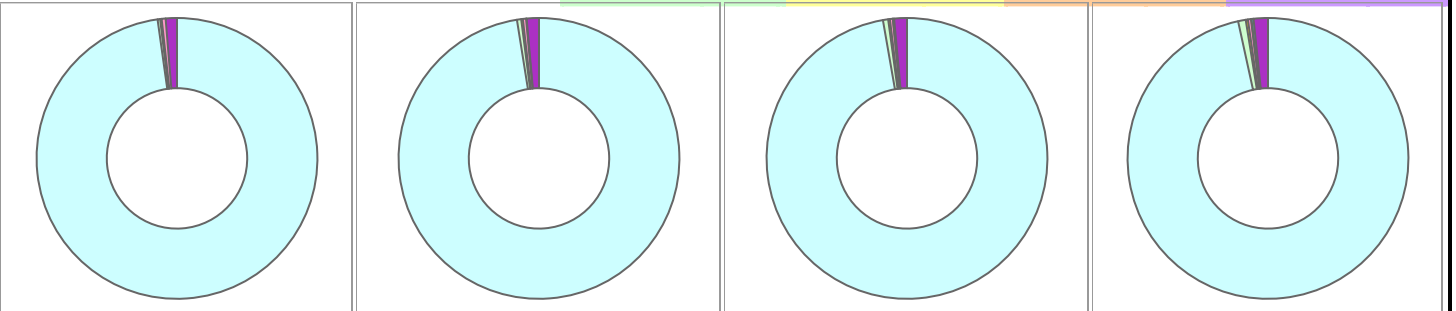
Population

Estimated Population (2021)	1,688	3,658	5,798	14,017
Projected Population (2026)	1,698	3,685	5,845	14,106
Census Population (2010)	1,715	3,689	5,852	14,303
Census Population (2000)	1,738	3,560	5,546	13,633
Projected Annual Growth (2021-2026)	10 0.1%	27 0.1%	47 0.2%	89 0.1%
Historical Annual Growth (2010-2021)	-27 -0.1%	-31 -	-54 -	-286 -0.2%
Historical Annual Growth (2000-2010)	-23 -0.1%	129 0.4%	306 0.6%	671 0.5%
Estimated Population Density (2021)	537 psm	129 psm	74 psm	45 psm
Trade Area Size	3.1 sq mi	28.3 sq mi	78.5 sq mi	314.0 sq mi



Race and Ethnicity (2021)

Not Hispanic or Latino Population	1,672 99.1%	3,627 99.2%	5,747 99.1%	13,868 98.9%
White	1,635 97.8%	3,540 97.6%	5,600 97.4%	13,443 96.9%
Black or African American	5 0.3%	17 0.5%	34 0.6%	119 0.9%
American Indian or Alaska Native	3 0.2%	7 0.2%	11 0.2%	34 0.2%
Asian	8 0.5%	14 0.4%	20 0.3%	50 0.4%
Hawaiian or Pacific Islander	- -	- -	1 -	7 -
Other Race	- -	1 -	1 -	2 -
Two or More Races	20 1.2%	48 1.3%	80 1.4%	213 1.5%
Hispanic or Latino Population	16 0.9%	31 0.8%	52 0.9%	149 1.1%
White	13 83.6%	25 80.7%	39 75.8%	95 63.6%
Black or African American	- -	1 3.2%	1 1.9%	4 2.6%
American Indian or Alaska Native	- -	- -	- -	1 0.7%
Asian	- -	- -	- -	- -
Hispanic Hawaiian or Pacific Islander	- -	- -	- -	- -
Other Race	- -	1 4.5%	6 12.4%	32 21.6%
Two or More Races	2 10.5%	4 11.5%	5 9.8%	17 11.6%



White Black or African American American Indian or Alaska Native Asian Hawaiian or Pacific Islander Other Race 2+ Races

This report was produced using data from private and government sources deemed to be reliable. The information herein is provided without representation or warranty.

GRAPHIC PROFILE

2000-2010 Census, 2021 Estimates with 2026 Projections

Calculated using Weighted Block Centroid from Block Groups

Lat/Lon: 38.9048/-82.57

RGRAP3

4857 OH-93

Oak Hill, OH 45656

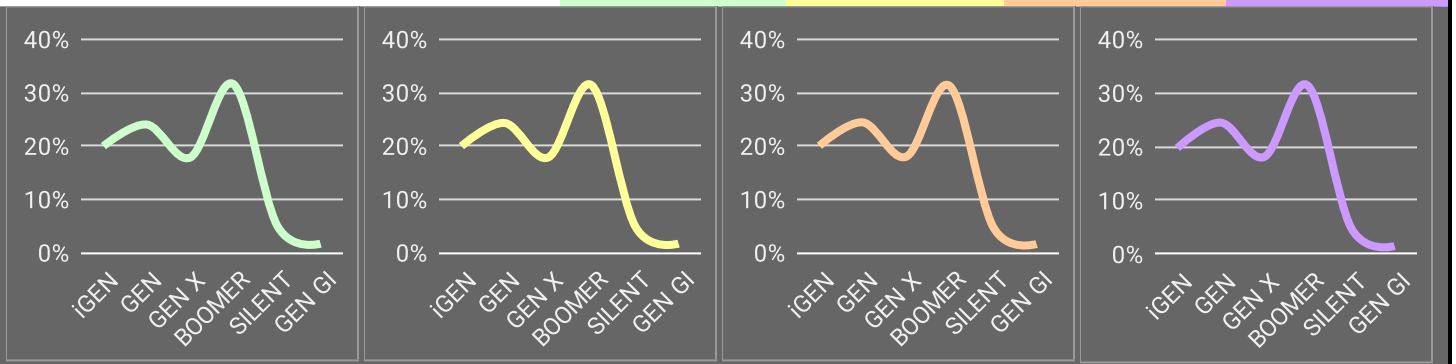
1 mi radius 3 mi radius 5 mi radius 10 mi radius

Age Distribution (2021)

Age Group	1 mi radius	3 mi radius	5 mi radius	10 mi radius
Age Under 5 Years	110 6.5%	243 6.7%	386 6.7%	902 6.4%
Age 5 to 9 Years	119 7.0%	248 6.8%	391 6.7%	917 6.5%
Age 10 to 14 Years	108 6.4%	238 6.5%	383 6.6%	946 6.7%
Age 15 to 19 Years	103 6.1%	227 6.2%	364 6.3%	894 6.4%
Age 20 to 24 Years	93 5.5%	200 5.5%	320 5.5%	816 5.8%
Age 25 to 29 Years	101 6.0%	217 5.9%	343 5.9%	831 5.9%
Age 30 to 34 Years	108 6.4%	244 6.7%	388 6.7%	888 6.3%
Age 35 to 39 Years	102 6.0%	223 6.1%	351 6.0%	837 6.0%
Age 40 to 44 Years	96 5.7%	208 5.7%	340 5.9%	839 6.0%
Age 45 to 49 Years	103 6.1%	220 6.0%	351 6.1%	859 6.1%
Age 50 to 54 Years	115 6.8%	241 6.6%	382 6.6%	894 6.4%
Age 55 to 59 Years	115 6.8%	249 6.8%	387 6.7%	934 6.7%
Age 60 to 64 Years	114 6.7%	256 7.0%	412 7.1%	993 7.1%
Age 65 to 69 Years	103 6.1%	224 6.1%	357 6.2%	883 6.3%
Age 70 to 74 Years	86 5.1%	177 4.8%	272 4.7%	694 5.0%
Age 75 to 79 Years	50 3.0%	112 3.1%	175 3.0%	430 3.1%
Age 80 to 84 Years	35 2.1%	69 1.9%	104 1.8%	254 1.8%
Age 85 Years or Over	28 1.7%	62 1.7%	93 1.6%	208 1.5%
Median Age	39.1	38.8	38.6	38.8

Generation (2021)

Generation	1 mi radius	3 mi radius	5 mi radius	10 mi radius
iGeneration (Age Under 15 Years)	337 20.0%	729 19.9%	1,160 20.0%	2,765 19.7%
Generation 9/11 Millennials (Age 15 to 34 Years)	405 24.0%	888 24.3%	1,414 24.4%	3,428 24.5%
Gen Xers (Age 35 to 49 Years)	301 17.8%	652 17.8%	1,042 18.0%	2,534 18.1%
Baby Boomers (Age 50 to 74 Years)	532 31.5%	1,146 31.3%	1,810 31.2%	4,398 31.4%
Silent Generation (Age 75 to 84 Years)	85 5.1%	181 4.9%	279 4.8%	684 4.9%
G.I. Generation (Age 85 Years or Over)	28 1.7%	62 1.7%	93 1.6%	208 1.5%



This report was produced using data from private and government sources deemed to be reliable. The information herein is provided without representation or warranty.

GRAPHIC PROFILE

2000-2010 Census, 2021 Estimates with 2026 Projections

Calculated using Weighted Block Centroid from Block Groups

Lat/Lon: 38.9048/-82.57

RGRAP3

4857 OH-93

Oak Hill, OH 45656

1 mi radius

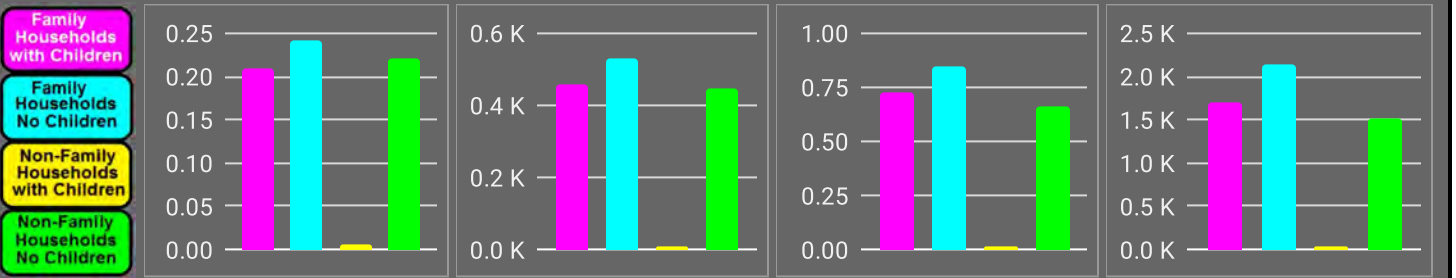
3 mi radius

5 mi radius

10 mi radius

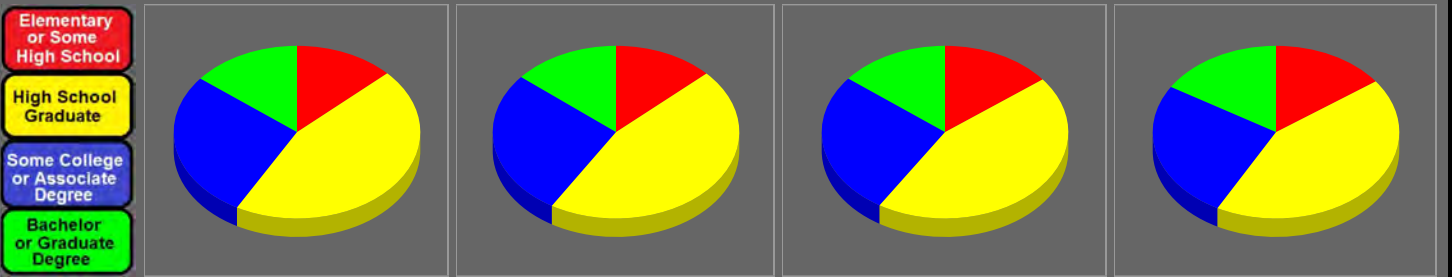
Household Type (2021)

	1 mi radius	3 mi radius	5 mi radius	10 mi radius
Total Households	677	1,440	2,248	5,387
Family Households	451 66.6%	985 68.4%	1,572 69.9%	3,833 71.2%
Family Households with Children	210 46.4%	457 46.4%	724 46.0%	1,705 44.5%
Family Households No Children	242 53.6%	528 53.6%	849 54.0%	2,129 55.5%
Non-Family Households	226 33.4%	455 31.6%	676 30.1%	1,553 28.8%
Non-Family Households with Children	5 2.2%	10 2.2%	15 2.2%	29 1.9%
Non-Family Households No Children	221 97.8%	445 97.8%	661 97.8%	1,524 98.1%



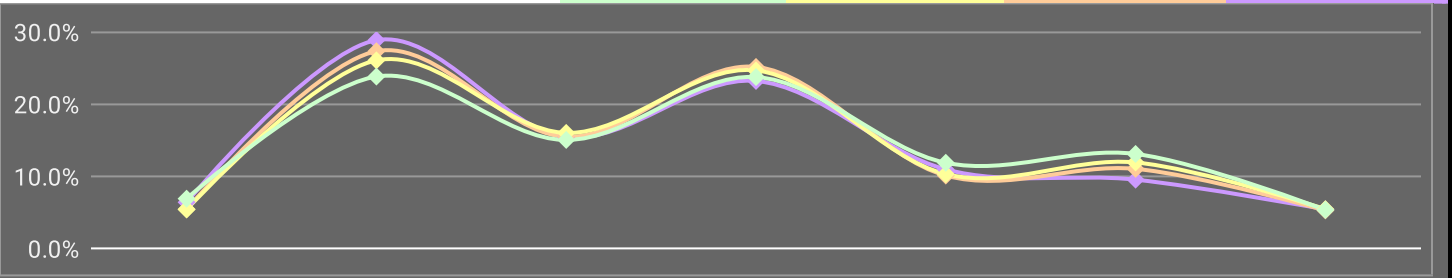
Education Attainment (2021)

	1 mi radius	3 mi radius	5 mi radius	10 mi radius
Elementary or Some High School	151 13.1%	328 13.1%	575 14.5%	1,431 15.0%
High School Graduate	520 45.0%	1,140 45.6%	1,754 44.4%	4,090 42.9%
Some College or Associate Degree	318 27.6%	683 27.3%	1,058 26.7%	2,472 25.9%
Bachelor or Graduate Degree	166 14.4%	350 14.0%	568 14.4%	1,550 16.2%



Household Income (2021)

	1 mi radius	3 mi radius	5 mi radius	10 mi radius
Estimated Average Household Income	\$71,511	\$69,583	\$69,705	\$67,510
Estimated Median Household Income	\$48,324	\$50,348	\$51,656	\$52,684
HH Income Under \$10,000	44 6.4%	79 5.5%	122 5.4%	373 6.9%
HH Income \$10,000 to \$34,999	196 28.9%	394 27.3%	586 26.1%	1,284 23.8%
HH Income \$35,000 to \$49,999	105 15.5%	223 15.5%	361 16.0%	811 15.1%
HH Income \$50,000 to \$74,999	157 23.2%	363 25.2%	555 24.7%	1,281 23.8%
HH Income \$75,000 to \$99,999	74 11.0%	146 10.1%	232 10.3%	641 11.9%
HH Income \$100,000 to \$149,999	65 9.6%	159 11.1%	269 11.9%	707 13.1%
HH Income \$150,000 or More	37 5.4%	76 5.3%	123 5.5%	289 5.4%



This report was produced using data from private and government sources deemed to be reliable. The information herein is provided without representation or warranty.

EXPANDED PROFILE

2000-2010 Census, 2021 Estimates with 2026 Projections

Calculated using Weighted Block Centroid from Block Groups

Lat/Lon: 38.9048/-82.57

RF5

4857 OH-93

Oak Hill, OH 45656

	1 mi radius	3 mi radius	5 mi radius	10 mi radius
Population				
Estimated Population (2021)	1,688	3,658	5,798	14,017
Projected Population (2026)	1,698	3,685	5,845	14,106
Census Population (2010)	1,715	3,689	5,852	14,303
Census Population (2000)	1,738	3,560	5,546	13,633
Projected Annual Growth (2021 to 2026)	10 0.1%	27 0.1%	47 0.2%	89 0.1%
Historical Annual Growth (2010 to 2021)	-27 -0.1%	-31 -	-54 -	-286 -0.2%
Historical Annual Growth (2000 to 2010)	-23 -0.1%	129 0.4%	306 0.6%	671 0.5%
Estimated Population Density (2021)	537 psm	129 psm	74 psm	45 psm
Trade Area Size	3.1 sq mi	28.3 sq mi	78.5 sq mi	314.0 sq mi
Households				
Estimated Households (2021)	677	1,440	2,248	5,387
Projected Households (2026)	680	1,446	2,258	5,402
Census Households (2010)	677	1,428	2,230	5,410
Census Households (2000)	692	1,389	2,124	5,116
Estimated Households with Children (2021)	215 31.7%	467 32.4%	738 32.8%	1,734 32.2%
Estimated Average Household Size (2021)	2.49	2.53	2.56	2.57
Average Household Income				
Estimated Average Household Income (2021)	\$71,511	\$69,583	\$69,705	\$67,510
Projected Average Household Income (2026)	\$103,655	\$96,468	\$91,652	\$81,691
Estimated Average Family Income (2021)	\$89,937	\$83,721	\$83,113	\$79,607
Median Household Income				
Estimated Median Household Income (2021)	\$48,324	\$50,348	\$51,656	\$52,684
Projected Median Household Income (2026)	\$54,928	\$57,159	\$58,767	\$60,350
Estimated Median Family Income (2021)	\$58,844	\$58,059	\$59,517	\$62,852
Per Capita Income				
Estimated Per Capita Income (2021)	\$28,715	\$27,435	\$27,075	\$26,017
Projected Per Capita Income (2026)	\$41,518	\$37,895	\$35,457	\$31,359
Estimated Per Capita Income 5 Year Growth	\$12,803 44.6%	\$10,460 38.1%	\$8,383 31.0%	\$5,342 20.5%
Estimated Average Household Net Worth (2021)	\$309,833	\$311,334	\$327,750	\$354,894
Daytime Demos (2021)				
Total Businesses	69	78	97	346
Total Employees	697	805	1,032	3,731
Company Headquarter Businesses	4 5.4%	4 5.0%	5 4.7%	15 4.3%
Company Headquarter Employees	82 11.7%	88 10.9%	98 9.5%	281 7.5%
Employee Population per Business	10.1	10.3	10.6	10.8
Residential Population per Business	24.5	46.7	59.6	40.5

This report was produced using data from private and government sources deemed to be reliable. The information herein is provided without representation or warranty.

EXPANDED PROFILE

2000-2010 Census, 2021 Estimates with 2026 Projections

Calculated using Weighted Block Centroid from Block Groups

Lat/Lon: 38.9048/-82.57

RF5

4857 OH-93

Oak Hill, OH 45656

Race & Ethnicity

	1 mi radius		3 mi radius		5 mi radius		10 mi radius	
White (2021)	1,648	97.7%	3,565	97.5%	5,639	97.3%	13,538	96.6%
Black or African American (2021)	6	0.3%	18	0.5%	35	0.6%	123	0.9%
American Indian or Alaska Native (2021)	3	0.2%	7	0.2%	11	0.2%	35	0.2%
Asian (2021)	8	0.5%	14	0.4%	20	0.3%	50	0.4%
Hawaiian or Pacific Islander (2021)	-	-	-	-	1	-	7	-
Other Race (2021)	-	-	2	-	7	0.1%	34	0.2%
Two or More Races (2021)	22	1.3%	51	1.4%	85	1.5%	231	1.6%
Not Hispanic or Latino Population (2021)	1,672	99.1%	3,627	99.2%	5,747	99.1%	13,868	98.9%
Hispanic or Latino Population (2021)	16	0.9%	31	0.8%	52	0.9%	149	1.1%
Not Hispanic or Latino Population (2026)	1,682	99.1%	3,653	99.1%	5,793	99.1%	13,956	98.9%
Hispanic or Latino Population (2026)	16	0.9%	32	0.9%	52	0.9%	150	1.1%
Not Hispanic or Latino Population (2010)	1,707	99.6%	3,675	99.6%	5,827	99.6%	14,226	99.5%
Hispanic or Latino Population (2010)	8	0.4%	14	0.4%	25	0.4%	78	0.5%
Not Hispanic or Latino Population (2000)	1,731	99.6%	3,547	99.6%	5,525	99.6%	13,573	99.6%
Hispanic or Latino Population (2000)	6	0.4%	14	0.4%	21	0.4%	59	0.4%
Projected Hispanic Annual Growth (2021 to 2026)	-	0.6%	-	0.5%	-	0.3%	-	-
Historic Hispanic Annual Growth (2000 to 2021)	9	7.2%	17	6.1%	31	7.1%	90	7.2%

Age Distribution (2021)

Age Under 5	110	6.5%	243	6.7%	386	6.7%	902	6.4%
Age 5 to 9 Years	119	7.0%	248	6.8%	391	6.7%	917	6.5%
Age 10 to 14 Years	108	6.4%	238	6.5%	383	6.6%	946	6.7%
Age 15 to 19 Years	103	6.1%	227	6.2%	364	6.3%	894	6.4%
Age 20 to 24 Years	93	5.5%	200	5.5%	320	5.5%	816	5.8%
Age 25 to 29 Years	101	6.0%	217	5.9%	343	5.9%	831	5.9%
Age 30 to 34 Years	108	6.4%	244	6.7%	388	6.7%	888	6.3%
Age 35 to 39 Years	102	6.0%	223	6.1%	351	6.0%	837	6.0%
Age 40 to 44 Years	96	5.7%	208	5.7%	340	5.9%	839	6.0%
Age 45 to 49 Years	103	6.1%	220	6.0%	351	6.1%	859	6.1%
Age 50 to 54 Years	115	6.8%	241	6.6%	382	6.6%	894	6.4%
Age 55 to 59 Years	115	6.8%	249	6.8%	387	6.7%	934	6.7%
Age 60 to 64 Years	114	6.7%	256	7.0%	412	7.1%	993	7.1%
Age 65 to 74 Years	188	11.2%	401	11.0%	628	10.8%	1,577	11.3%
Age 75 to 84 Years	85	5.1%	181	4.9%	279	4.8%	684	4.9%
Age 85 Years or Over	28	1.7%	62	1.7%	93	1.6%	208	1.5%
Median Age	39.1		38.8		38.6		38.8	

Gender Age Distribution (2021)

Female Population	860	50.9%	1,850	50.6%	2,915	50.3%	7,044	50.3%
Age 0 to 19 Years	214	24.9%	462	25.0%	732	25.1%	1,775	25.2%
Age 20 to 64 Years	463	53.9%	1,010	54.6%	1,612	55.3%	3,902	55.4%
Age 65 Years or Over	182	21.2%	377	20.4%	571	19.6%	1,366	19.4%
Female Median Age	41.6		40.8		40.3		39.9	
Male Population	828	49.1%	1,808	49.4%	2,883	49.7%	6,973	49.7%
Age 0 to 19 Years	226	27.2%	494	27.3%	793	27.5%	1,884	27.0%
Age 20 to 64 Years	483	58.3%	1,048	58.0%	1,661	57.6%	3,987	57.2%
Age 65 Years or Over	120	14.4%	266	14.7%	429	14.9%	1,102	15.8%
Male Median Age	36.9		36.9		37.1		37.7	

This report was produced using data from private and government sources deemed to be reliable. The information herein is provided without representation or warranty.

EXPANDED PROFILE

2000-2010 Census, 2021 Estimates with 2026 Projections

Calculated using Weighted Block Centroid from Block Groups

Lat/Lon: 38.9048/-82.57

RF5

4857 OH-93

Oak Hill, OH 45656

	1 mi radius		3 mi radius		5 mi radius		10 mi radius	
Household Income Distribution (2021)								
HH Income \$200,000 or More	5	0.8%	11	0.8%	27	1.2%	131	2.4%
HH Income \$150,000 to \$199,999	32	4.7%	65	4.5%	96	4.3%	158	2.9%
HH Income \$100,000 to \$149,999	65	9.6%	159	11.1%	269	11.9%	707	13.1%
HH Income \$75,000 to \$99,999	74	11.0%	146	10.1%	232	10.3%	641	11.9%
HH Income \$50,000 to \$74,999	157	23.2%	363	25.2%	555	24.7%	1,281	23.8%
HH Income \$35,000 to \$49,999	105	15.5%	223	15.5%	361	16.0%	811	15.1%
HH Income \$25,000 to \$34,999	61	9.1%	120	8.3%	188	8.4%	493	9.2%
HH Income \$15,000 to \$24,999	60	8.8%	124	8.6%	192	8.6%	491	9.1%
HH Income Under \$15,000	118	17.4%	229	15.9%	328	14.6%	673	12.5%
HH Income \$35,000 or More	438	64.7%	967	67.2%	1,540	68.5%	3,729	69.2%
HH Income \$75,000 or More	176	26.0%	382	26.5%	624	27.8%	1,637	30.4%
Housing (2021)								
Total Housing Units	771		1,645		2,573		6,227	
Housing Units Occupied	677	87.8%	1,440	87.6%	2,248	87.4%	5,387	86.5%
Housing Units Owner-Occupied	481	71.0%	1,042	72.4%	1,671	74.4%	4,118	76.4%
Housing Units, Renter-Occupied	197	29.0%	398	27.6%	577	25.6%	1,269	23.6%
Housing Units, Vacant	94	13.9%	205	14.2%	325	14.5%	840	15.6%
Marital Status (2021)								
Never Married	328	24.3%	647	22.1%	1,016	21.9%	2,591	23.0%
Currently Married	638	47.3%	1,461	49.9%	2,400	51.7%	6,069	53.9%
Separated	51	3.8%	140	4.8%	208	4.5%	430	3.8%
Widowed	148	11.0%	330	11.3%	473	10.2%	935	8.3%
Divorced	185	13.7%	349	11.9%	541	11.7%	1,227	10.9%
Household Type (2021)								
Population Family	1,404	83.2%	3,074	84.1%	4,923	84.9%	11,971	85.4%
Population Non-Family	282	16.7%	564	15.4%	835	14.4%	1,881	13.4%
Population Group Quarters	1	-	19	0.5%	40	0.7%	165	1.2%
Family Households	451	66.6%	985	68.4%	1,572	69.9%	3,833	71.2%
Non-Family Households	226	33.4%	455	31.6%	676	30.1%	1,553	28.8%
Married Couple with Children	141	22.1%	305	20.9%	490	20.4%	1,182	19.5%
Average Family Household Size	3.1		3.1		3.1		3.1	
Household Size (2021)								
1 Person Households	188	27.8%	376	26.1%	557	24.8%	1,300	24.1%
2 Person Households	220	32.5%	479	33.2%	767	34.1%	1,883	35.0%
3 Person Households	118	17.4%	252	17.5%	391	17.4%	914	17.0%
4 Person Households	86	12.7%	193	13.4%	302	13.5%	726	13.5%
5 Person Households	37	5.5%	80	5.6%	136	6.1%	338	6.3%
6 or More Person Households	28	4.1%	60	4.2%	95	4.2%	226	4.2%
Household Vehicles (2021)								
Households with 0 Vehicles Available	53	7.8%	106	7.4%	170	7.6%	368	6.8%
Households with 1 Vehicles Available	193	28.5%	410	28.5%	592	26.3%	1,269	23.6%
Households with 2 or More Vehicles Available	432	63.7%	924	64.2%	1,486	66.1%	3,749	69.6%
Total Vehicles Available	1,254		2,703		4,357		11,060	
Average Vehicles Per Household	1.9		1.9		1.9		2.1	

This report was produced using data from private and government sources deemed to be reliable. The information herein is provided without representation or warranty.

EXPANDED PROFILE

2000-2010 Census, 2021 Estimates with 2026 Projections

Calculated using Weighted Block Centroid from Block Groups

Lat/Lon: 38.9048/-82.57

RF5

4857 OH-93

Oak Hill, OH 45656

	1 mi radius		3 mi radius		5 mi radius		10 mi radius	
Labor Force (2021)								
Estimated Labor Population Age 16 Years or Over	1,329		2,874		4,553		11,064	
Estimated Civilian Employed	620	46.7%	1,348	46.9%	2,181	47.9%	5,546	50.1%
Estimated Civilian Unemployed	38	2.9%	86	3.0%	152	3.3%	444	4.0%
Estimated in Armed Forces	-	-	-	-	-	-	-	-
Estimated Not in Labor Force	671	50.4%	1,440	50.1%	2,220	48.8%	5,073	45.9%
Unemployment Rate	2.9%		3.0%		3.3%		4.0%	
Occupation (2021)								
Occupation: Population Age 16 Years or Over	620		1,348		2,181		5,546	
Management, Business, Financial Operations	47	7.5%	116	8.6%	204	9.4%	554	10.0%
Professional, Related	123	19.9%	276	20.5%	442	20.2%	1,182	21.3%
Service	101	16.4%	214	15.9%	331	15.2%	816	14.7%
Sales, Office	105	17.0%	251	18.7%	415	19.0%	1,127	20.3%
Farming, Fishing, Forestry	5	0.8%	8	0.6%	11	0.5%	14	0.2%
Construct, Extraction, Maintenance	61	9.9%	155	11.5%	256	11.7%	612	11.0%
Production, Transport Material Moving	177	28.6%	327	24.2%	522	23.9%	1,242	22.4%
White Collar Workers	275	44.4%	644	47.8%	1,061	48.6%	2,863	51.6%
Blue Collar Workers	345	55.6%	704	52.2%	1,120	51.4%	2,683	48.4%
Consumer Expenditure (2021)								
Total Household Expenditure	\$37.76 M		\$78.7 M		\$122.94 M		\$288.37 M	
Total Non-Retail Expenditure	\$19.89 M	52.7%	\$41.42 M	52.6%	\$64.68 M	52.6%	\$151.6 M	52.6%
Total Retail Expenditure	\$17.87 M	47.3%	\$37.28 M	47.4%	\$58.27 M	47.4%	\$136.77 M	47.4%
Apparel	\$1.3 M	3.5%	\$2.72 M	3.5%	\$4.25 M	3.5%	\$9.96 M	3.5%
Contributions	\$1.17 M	3.1%	\$2.43 M	3.1%	\$3.81 M	3.1%	\$9.01 M	3.1%
Education	\$1.02 M	2.7%	\$2.12 M	2.7%	\$3.32 M	2.7%	\$7.78 M	2.7%
Entertainment	\$2.09 M	5.5%	\$4.35 M	5.5%	\$6.82 M	5.5%	\$16.02 M	5.6%
Food and Beverages	\$5.63 M	14.9%	\$11.74 M	14.9%	\$18.32 M	14.9%	\$42.93 M	14.9%
Furnishings and Equipment	\$1.3 M	3.4%	\$2.71 M	3.4%	\$4.25 M	3.5%	\$9.98 M	3.5%
Gifts	\$865.1 K	2.3%	\$1.8 M	2.3%	\$2.83 M	2.3%	\$6.69 M	2.3%
Health Care	\$3.3 M	8.7%	\$6.88 M	8.7%	\$10.73 M	8.7%	\$25.19 M	8.7%
Household Operations	\$1.46 M	3.9%	\$3.04 M	3.9%	\$4.75 M	3.9%	\$11.16 M	3.9%
Miscellaneous Expenses	\$709.99 K	1.9%	\$1.48 M	1.9%	\$2.32 M	1.9%	\$5.43 M	1.9%
Personal Care	\$505.27 K	1.3%	\$1.05 M	1.3%	\$1.64 M	1.3%	\$3.86 M	1.3%
Personal Insurance	\$252.08 K	0.7%	\$526.24 K	0.7%	\$826.61 K	0.7%	\$1.95 M	0.7%
Reading	\$81.83 K	0.2%	\$170.44 K	0.2%	\$266.28 K	0.2%	\$625.24 K	0.2%
Shelter	\$8 M	21.2%	\$16.63 M	21.1%	\$25.94 M	21.1%	\$60.71 M	21.1%
Tobacco	\$257.03 K	0.7%	\$532.03 K	0.7%	\$823.28 K	0.7%	\$1.92 M	0.7%
Transportation	\$6.89 M	18.2%	\$14.4 M	18.3%	\$22.53 M	18.3%	\$52.94 M	18.4%
Utilities	\$2.93 M	7.8%	\$6.1 M	7.8%	\$9.51 M	7.7%	\$22.23 M	7.7%
Educational Attainment (2021)								
Adult Population Age 25 Years or Over	1,155		2,501		3,954		9,542	
Elementary (Grade Level 0 to 8)	59	5.1%	150	6.0%	300	7.6%	751	7.9%
Some High School (Grade Level 9 to 11)	92	7.9%	178	7.1%	275	7.0%	680	7.1%
High School Graduate	520	45.0%	1,140	45.6%	1,754	44.4%	4,090	42.9%
Some College	193	16.7%	414	16.5%	651	16.5%	1,605	16.8%
Associate Degree Only	125	10.9%	269	10.8%	407	10.3%	866	9.1%
Bachelor Degree Only	93	8.0%	204	8.1%	344	8.7%	924	9.7%
Graduate Degree	73	6.3%	146	5.8%	224	5.7%	625	6.6%

This report was produced using data from private and government sources deemed to be reliable. The information herein is provided without representation or warranty.

EXPANDED PROFILE

2000-2010 Census, 2021 Estimates with 2026 Projections

Calculated using Weighted Block Centroid from Block Groups

Lat/Lon: 38.9048/-82.57

RF5

4857 OH-93

	1 mi radius		3 mi radius		5 mi radius		10 mi radius	
Oak Hill, OH 45656								
Units In Structure (2021)								
1 Detached Unit	485	71.7%	1,006	70.5%	1,554	69.7%	3,704	68.5%
1 Attached Unit	3	0.4%	13	0.9%	22	1.0%	64	1.2%
2 to 4 Units	17	2.5%	31	2.1%	47	2.1%	158	2.9%
5 to 9 Units	6	0.9%	11	0.8%	14	0.6%	49	0.9%
10 to 19 Units	5	0.7%	13	0.9%	26	1.1%	56	1.0%
20 to 49 Units	-	-	-	-	1	-	5	-
50 or More Units	2	0.4%	6	0.5%	9	0.4%	19	0.3%
Mobile Home or Trailer	160	23.6%	358	25.1%	574	25.7%	1,331	24.6%
Other Structure	-	-	-	-	-	-	-	-
Homes Built By Year (2021)								
Homes Built 2010 or later	11	1.7%	32	2.3%	83	3.7%	237	4.4%
Homes Built 2000 to 2009	73	10.8%	170	11.9%	272	12.2%	764	14.1%
Homes Built 1990 to 1999	131	19.3%	294	20.6%	482	21.6%	1,161	21.5%
Homes Built 1980 to 1989	91	13.4%	197	13.8%	328	14.7%	700	12.9%
Homes Built 1970 to 1979	69	10.2%	166	11.6%	261	11.7%	761	14.1%
Homes Built 1960 to 1969	32	4.7%	61	4.3%	91	4.1%	302	5.6%
Homes Built 1950 to 1959	83	12.3%	161	11.3%	236	10.6%	597	11.0%
Homes Built Before 1949	188	27.7%	360	25.2%	495	22.2%	865	16.0%
Home Values (2021)								
Home Values \$1,000,000 or More	2	0.4%	4	0.4%	7	0.4%	13	0.3%
Home Values \$500,000 to \$999,999	1	0.3%	4	0.3%	10	0.6%	56	1.4%
Home Values \$400,000 to \$499,999	5	1.1%	15	1.4%	25	1.5%	43	1.0%
Home Values \$300,000 to \$399,999	6	1.2%	16	1.5%	41	2.4%	129	3.1%
Home Values \$200,000 to \$299,999	60	12.5%	145	13.9%	244	14.6%	593	14.4%
Home Values \$150,000 to \$199,999	53	11.0%	130	12.4%	201	12.0%	567	13.8%
Home Values \$100,000 to \$149,999	68	14.1%	155	14.9%	292	17.5%	826	20.1%
Home Values \$70,000 to \$99,999	99	20.7%	185	17.7%	271	16.2%	592	14.4%
Home Values \$50,000 to \$69,999	78	16.2%	140	13.4%	201	12.0%	422	10.2%
Home Values \$25,000 to \$49,999	70	14.5%	177	17.0%	286	17.1%	562	13.6%
Home Values Under \$25,000	39	8.1%	72	6.9%	93	5.6%	315	7.7%
Owner-Occupied Median Home Value	\$93,387		\$96,954		\$105,925		\$117,728	
Renter-Occupied Median Rent	\$504		\$507		\$509		\$519	
Transportation To Work (2021)								
Drive to Work Alone	563	82.2%	1,259	84.4%	1,976	83.1%	4,671	81.4%
Drive to Work in Carpool	96	14.0%	158	10.6%	237	10.0%	462	8.1%
Travel to Work by Public Transportation	-	-	-	-	2	-	43	0.7%
Drive to Work on Motorcycle	-	-	-	-	-	-	1	-
Walk or Bicycle to Work	18	2.6%	56	3.7%	124	5.2%	307	5.4%
Other Means	-	-	2	0.1%	2	0.1%	63	1.1%
Work at Home	8	1.1%	16	1.1%	36	1.5%	191	3.3%
Travel Time (2021)								
Travel to Work in 14 Minutes or Less	131	19.1%	321	21.5%	545	22.9%	1,544	26.9%
Travel to Work in 15 to 29 Minutes	208	30.4%	390	26.2%	597	25.1%	1,506	26.2%
Travel to Work in 30 to 59 Minutes	212	30.9%	457	30.7%	722	30.4%	1,585	27.6%
Travel to Work in 60 Minutes or More	62	9.1%	164	11.0%	281	11.8%	719	12.5%
Average Minutes Travel to Work	27.0		26.9		26.4		23.7	

This report was produced using data from private and government sources deemed to be reliable. The information herein is provided without representation or warranty.