

1591 US-209
Millersburg, PA 17061

\$12/sq. ft. NNN

*NNN includes but not limited to Real Estate Taxes, Insurance, and CAM (such as parking lot maintenance, snow removal, lawn care, etc.)

RETAIL SPACE FOR LEASE

Aerial - Site View



1,240 sq. ft. available in small center with Dollar General and Comcast

Approximately 226' from South Market Square and 6 miles East of State Route 147

Population Density Shading



Demographic Data

	1 mi radius	3 mi radius	5 mi radius
Population (2019)	671	6,879	12,485
Households (2019)	279	3,003	5,337
Median household income (2019)	\$58,338	\$56,047	\$60,037
Total Employees	439	2,506	3,466
Total Establishments	27	203	331

Population Density

By Blockgroups



COCCA DEVELOPMENT, LTD

100 DEBARTOLO PLACE SUITE 400 BOARDMAN, OHIO 44512
(330) 729-1010

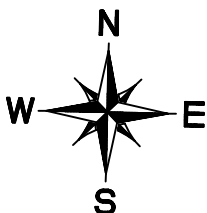
WWW.COCCADEVELOPMENT.COM

This map was produced using data from private and government sources deemed to be reliable. The information herein is provided without representation or warranty.

(Existing 33' R/W, 16' Paved)

S04°42'40"W 565.44

S77.49' 16" W
127.76'
S.R. 0209
(Existing 33' R/W, 22' Paved)



N84°31'17"E 322.94

EXISTING
POLE, LOCATION
APPROX

EXISTING
POLE, LOCATION
APPROXIMATE

NEW PAVED PARKING

EXISTING PAVED DRIVE LANE

PAVED AREA

DOLLAR GENERAL
20' X 36' (760 SF)

COMCAST CABLE
30' X 100' (3,000 SF)

DOLLAR GENERAL
72' X 100' (7,200 SF)

VACANT SPACE
20' X 62' (1,240 SF)

FENCED AREA TO BE 40' x 30'
ALL FENCING TO BE 10' TALL
WITH BARBED WIRE TOP

600.00

N 12° 10' 44" W

EXISTING PAVED PARKING TO REMAIN UNCHANGED

EXISTING PAVED PARKING LOT TO REMAIN UNCHANGED

— TO REMAIN UNCHANGED
EXISTING PAVED PARKING LOT

NOTE:

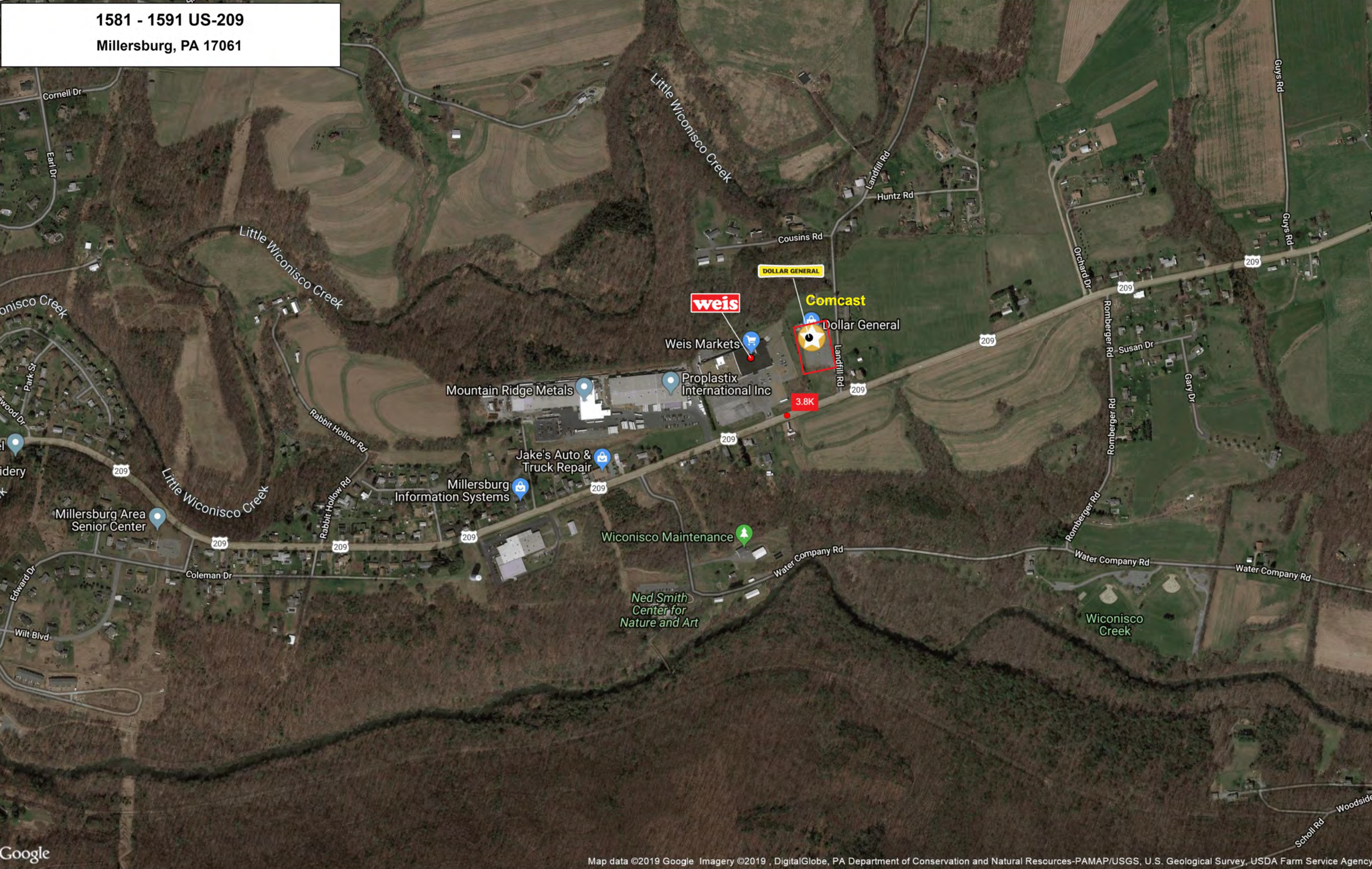
DIMENSIONS SHOWN FOR VACANT/AVAILABLE SPACES ARE APPROXIMATE & WOULD NEED TO BE FIELD VERIFIED PRIOR TO LEASING

UPDATED 11-20-15

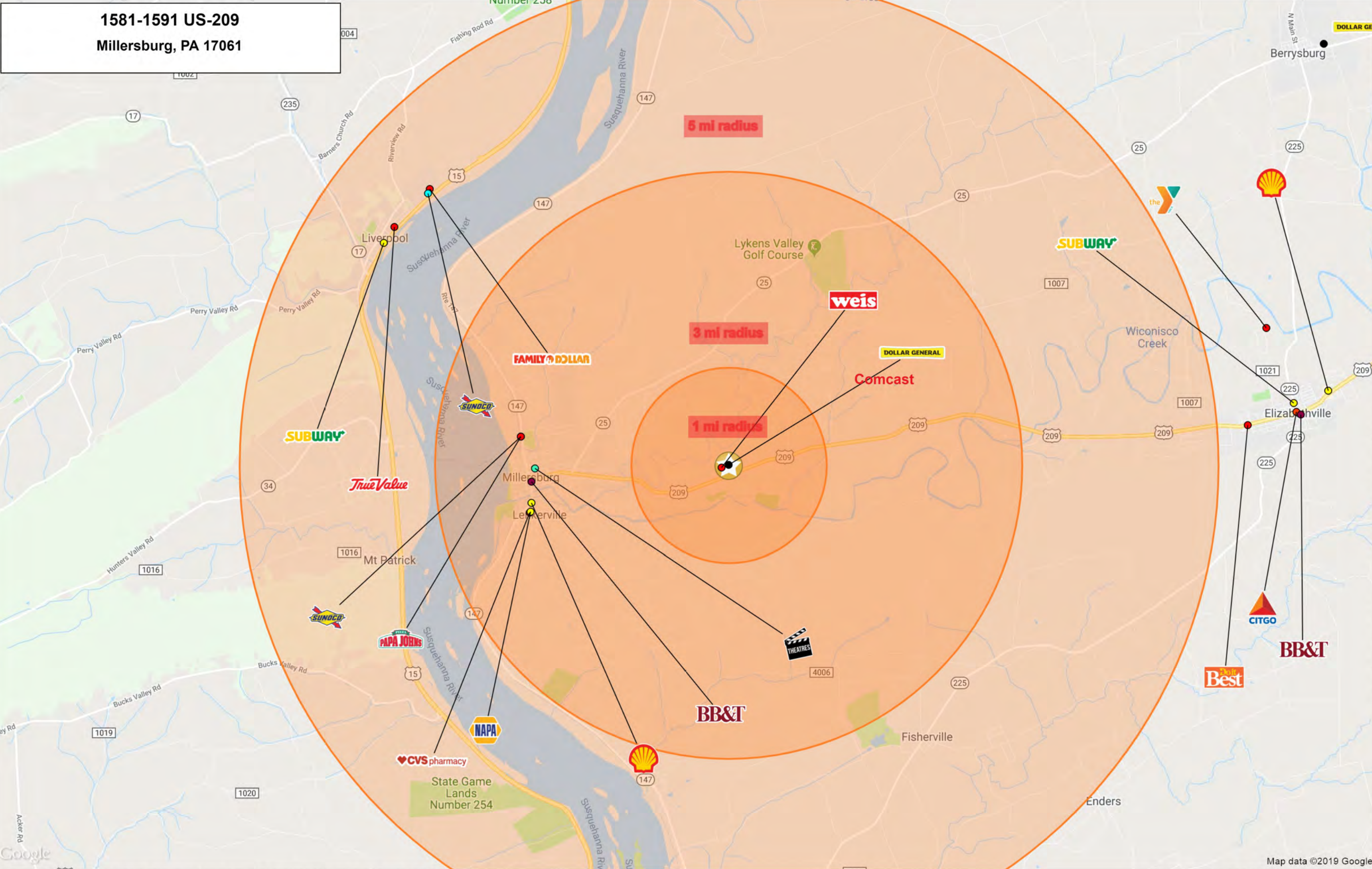
EXISTING SITE LAYOUT

 $1'' = 30'$

1581 - 1591 US-209
Millersburg, PA 17061



1581-1591 US-209
Millersburg, PA 17061



GRAPHIC PROFILE

2000-2010 Census, 2019 Estimates with 2024 Projections

Calculated using Weighted Block Centroid from Block Groups

Lat/Lon: 40.5411/-76.9223

RGRAP3

1581-1591 US-209

Millersburg, PA 17061

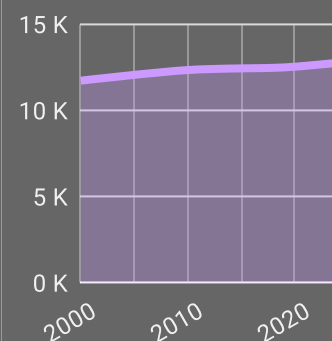
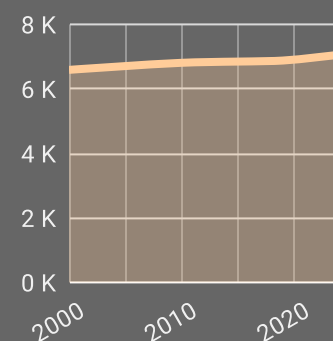
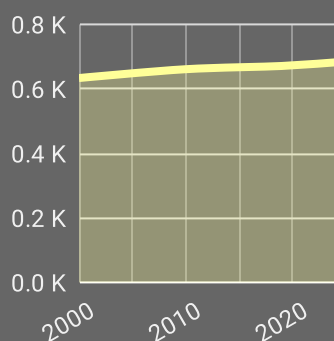
1 mi radius

3 mi radius

5 mi radius

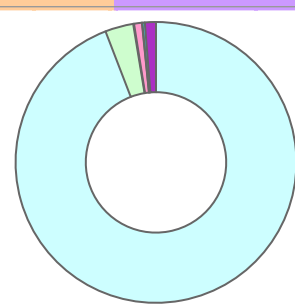
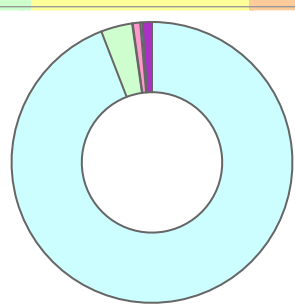
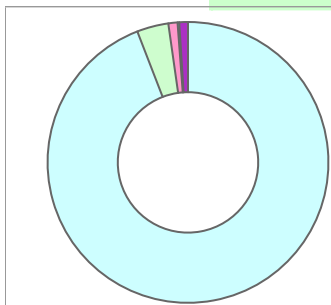
Population

Estimated Population (2019)	671	6,879	12,485
Projected Population (2024)	682	7,059	12,752
Census Population (2010)	661	6,809	12,334
Census Population (2000)	634	6,590	11,719
Projected Annual Growth (2019-2024)	11 0.3%	180 0.5%	267 0.4%
Historical Annual Growth (2010-2019)	10 0.2%	70 0.1%	151 0.1%
Historical Annual Growth (2000-2010)	27 0.4%	219 0.3%	616 0.5%
Estimated Population Density (2019)	214 psm	243 psm	159 psm
Trade Area Size	3.1 sq mi	28.3 sq mi	78.5 sq mi



Race and Ethnicity (2019)

Not Hispanic or Latino Population	656 97.7%	6,725 97.8%	12,204 97.8%
White	618 94.2%	6,357 94.5%	11,564 94.8%
Black or African American	23 3.5%	229 3.4%	360 2.9%
American Indian or Alaska Native	- -	3 -	10 -
Asian	7 1.1%	58 0.9%	112 0.9%
Hawaiian or Pacific Islander	- -	- -	1 -
Other Race	- -	6 -	7 -
Two or More Races	7 1.0%	73 1.1%	150 1.2%
Hispanic or Latino Population	15 2.3%	154 2.2%	281 2.2%
White	12 80.4%	118 76.8%	190 67.7%
Black or African American	1 7.3%	20 12.7%	46 16.4%
American Indian or Alaska Native	- -	2 1.3%	2 0.8%
Asian	- -	1 0.7%	1 0.4%
Hispanic Hawaiian or Pacific Islander	- -	- -	2 0.7%
Other Race	1 8.4%	11 7.3%	30 10.9%
Two or More Races	- -	2 1.3%	9 3.1%



White Black or African American American Indian or Alaska Native Asian Hawaiian or Pacific Islander Other Race 2+ Races

GRAPHIC PROFILE

2000-2010 Census, 2019 Estimates with 2024 Projections

Calculated using Weighted Block Centroid from Block Groups

Lat/Lon: 40.5411/-76.9223

RGRAP3

1581-1591 US-209

Millersburg, PA 17061

1 mi radius

3 mi radius

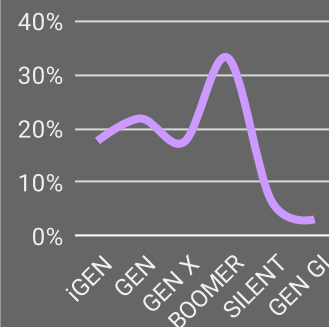
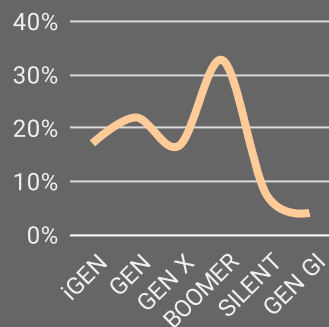
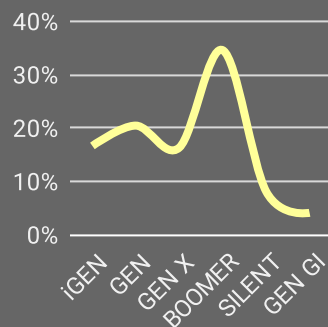
5 mi radius

Age Distribution (2019)

Age Under 5 Years	39	5.8%	437	6.4%	783	6.3%
Age 5 to 9 Years	36	5.4%	382	5.5%	739	5.9%
Age 10 to 14 Years	37	5.4%	357	5.2%	687	5.5%
Age 15 to 19 Years	31	4.7%	334	4.9%	632	5.1%
Age 20 to 24 Years	32	4.8%	357	5.2%	628	5.0%
Age 25 to 29 Years	31	4.6%	373	5.4%	680	5.4%
Age 30 to 34 Years	42	6.3%	444	6.5%	790	6.3%
Age 35 to 39 Years	36	5.3%	384	5.6%	727	5.8%
Age 40 to 44 Years	32	4.8%	355	5.2%	690	5.5%
Age 45 to 49 Years	41	6.2%	408	5.9%	771	6.2%
Age 50 to 54 Years	44	6.6%	430	6.2%	813	6.5%
Age 55 to 59 Years	47	7.0%	464	6.7%	910	7.3%
Age 60 to 64 Years	47	6.9%	451	6.6%	844	6.8%
Age 65 to 69 Years	50	7.5%	467	6.8%	847	6.8%
Age 70 to 74 Years	44	6.6%	435	6.3%	728	5.8%
Age 75 to 79 Years	29	4.4%	293	4.3%	476	3.8%
Age 80 to 84 Years	25	3.7%	228	3.3%	352	2.8%
Age 85 Years or Over	27	4.1%	279	4.1%	388	3.1%
Median Age	46.1		43.9		43.1	

Generation (2019)

iGeneration (Age Under 15 Years)	111	16.6%	1,176	17.1%	2,209	17.7%
Generation 9/11 Millennials (Age 15 to 34 Years)	137	20.4%	1,509	21.9%	2,730	21.9%
Gen Xers (Age 35 to 49 Years)	109	16.3%	1,146	16.7%	2,188	17.5%
Baby Boomers (Age 50 to 74 Years)	232	34.5%	2,247	32.7%	4,143	33.2%
Silent Generation (Age 75 to 84 Years)	54	8.1%	522	7.6%	828	6.6%
G.I. Generation (Age 85 Years or Over)	27	4.1%	279	4.1%	388	3.1%



This report was produced using data from private and government sources deemed to be reliable. The information herein is provided without representation or warranty.

GRAPHIC PROFILE

2000-2010 Census, 2019 Estimates with 2024 Projections

Calculated using Weighted Block Centroid from Block Groups

Lat/Lon: 40.5411/-76.9223

RGRAP3

1581-1591 US-209

Millersburg, PA 17061

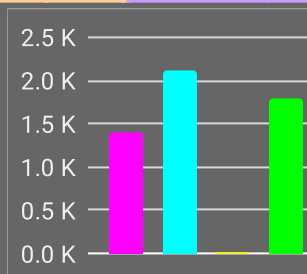
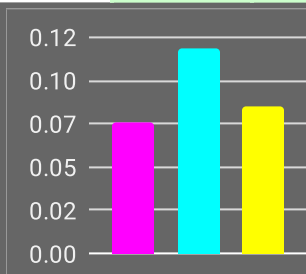
1 mi radius

3 mi radius

5 mi radius

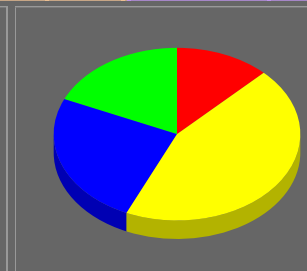
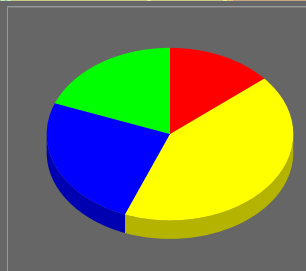
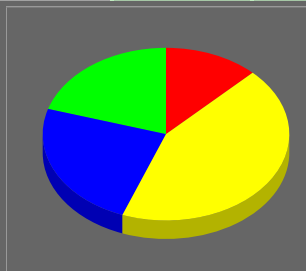
Household Type (2019)

Total Households	279	3,003	5,337
Family Households	194 69.4%	1,910 63.6%	3,533 66.2%
Family Households with Children	75 38.9%	776 40.6%	1,408 39.9%
Family Households No Children	118 61.1%	1,134 59.4%	2,125 60.1%
Non-Family Households	85 30.6%	1,092 36.4%	1,804 33.8%
Non-Family Households with Children	- -	8 0.7%	17 0.9%
Non-Family Households No Children	85 99.4%	1,085 99.3%	1,787 99.1%



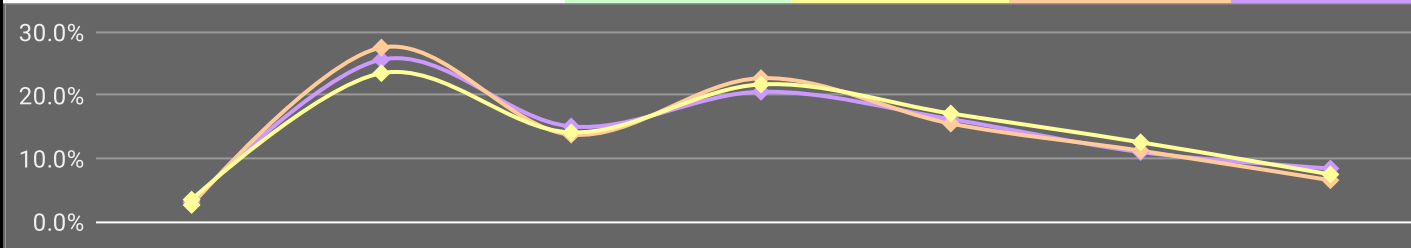
Education Attainment (2019)

Elementary or Some High School	62 12.4%	695 13.9%	1,119 12.4%
High School Graduate	215 43.3%	2,109 42.1%	3,994 44.3%
Some College or Associate Degree	119 24.0%	1,245 24.9%	2,249 24.9%
Bachelor or Graduate Degree	101 20.3%	962 19.2%	1,654 18.3%



Household Income (2019)

Estimated Average Household Income	\$70,839	\$67,275	\$67,976
Estimated Median Household Income	\$58,338	\$56,047	\$60,037
HH Income Under \$10,000	9 3.1%	79 2.6%	186 3.5%
HH Income \$10,000 to \$34,999	71 25.6%	827 27.5%	1,254 23.5%
HH Income \$35,000 to \$49,999	42 15.1%	414 13.8%	754 14.1%
HH Income \$50,000 to \$74,999	57 20.6%	682 22.7%	1,159 21.7%
HH Income \$75,000 to \$99,999	45 16.2%	466 15.5%	914 17.1%
HH Income \$100,000 to \$149,999	31 11.0%	337 11.2%	670 12.6%
HH Income \$150,000 or More	23 8.4%	197 6.6%	399 7.5%



This report was produced using data from private and government sources deemed to be reliable. The information herein is provided without representation or warranty.

EXPANDED PROFILE

2000-2010 Census, 2019 Estimates with 2024 Projections

Calculated using Weighted Block Centroid from Block Groups

Lat/Lon: 40.5411/-76.9223

RF5

1581-1591 US-209							
		1 mi radius		3 mi radius		5 mi radius	
Millersburg, PA 17061							
Population							
Estimated Population (2019)		671		6,879		12,485	
Projected Population (2024)		682		7,059		12,752	
Census Population (2010)		661		6,809		12,334	
Census Population (2000)		634		6,590		11,719	
Projected Annual Growth (2019 to 2024)		11	0.3%	180	0.5%	267	0.4%
Historical Annual Growth (2010 to 2019)		10	0.2%	70	0.1%	151	0.1%
Historical Annual Growth (2000 to 2010)		27	0.4%	219	0.3%	616	0.5%
Estimated Population Density (2019)		214	psm	243	psm	159	psm
Trade Area Size		3.1	sq mi	28.3	sq mi	78.5	sq mi
Households							
Estimated Households (2019)		279		3,003		5,337	
Projected Households (2024)		283		3,089		5,472	
Census Households (2010)		264		2,856		5,056	
Census Households (2000)		248		2,720		4,736	
Estimated Households with Children (2019)		76	27.2%	784	26.1%	1,425	26.7%
Estimated Average Household Size (2019)		2.29		2.23		2.30	
Average Household Income							
Estimated Average Household Income (2019)		\$70,839		\$67,275		\$67,976	
Projected Average Household Income (2024)		\$83,006		\$77,929		\$78,021	
Estimated Average Family Income (2019)		\$87,825		\$87,799		\$85,176	
Median Household Income							
Estimated Median Household Income (2019)		\$58,338		\$56,047		\$60,037	
Projected Median Household Income (2024)		\$67,990		\$65,451		\$69,667	
Estimated Median Family Income (2019)		\$75,873		\$75,198		\$77,200	
Per Capita Income							
Estimated Per Capita Income (2019)		\$29,744		\$29,551		\$29,180	
Projected Per Capita Income (2024)		\$34,806		\$34,285		\$33,604	
Estimated Per Capita Income 5 Year Growth		\$5,062	17.0%	\$4,735	16.0%	\$4,424	15.2%
Estimated Average Household Net Worth (2019)		\$542,541		\$483,804		\$521,239	
Daytime Demos (2019)							
Total Businesses		27		203		331	
Total Employees		439		2,506		3,466	
Company Headquarter Businesses	-	-		4	2.0%	4	1.2%
Company Headquarter Employees	-	-		118	4.7%	118	3.4%
Employee Population per Business		16.3		12.4		10.5	
Residential Population per Business		24.9		33.9		37.7	

This report was produced using data from private and government sources deemed to be reliable. The information herein is provided without representation or warranty.

EXPANDED PROFILE

2000-2010 Census, 2019 Estimates with 2024 Projections

Calculated using Weighted Block Centroid from Block Groups

Lat/Lon: 40.5411/-76.9223

RF5

1581-1591 US-209

Millersburg, PA 17061

Race & Ethnicity

	1 mi radius		3 mi radius		5 mi radius	
White (2019)	630	93.9%	6,475	94.1%	11,754	94.1%
Black or African American (2019)	24	3.6%	248	3.6%	406	3.3%
American Indian or Alaska Native (2019)	-	-	5	-	12	-
Asian (2019)	7	1.1%	59	0.9%	113	0.9%
Hawaiian or Pacific Islander (2019)	-	-	-	-	3	-
Other Race (2019)	2	0.3%	17	0.2%	38	0.3%
Two or More Races (2019)	7	1.0%	75	1.1%	159	1.3%
Not Hispanic or Latino Population (2019)	656	97.7%	6,725	97.8%	12,204	97.8%
Hispanic or Latino Population (2019)	15	2.3%	154	2.2%	281	2.2%
Not Hispanic or Latino Population (2024)	664	97.4%	6,878	97.4%	12,426	97.4%
Hispanic or Latino Population (2024)	18	2.6%	181	2.6%	325	2.6%
Not Hispanic or Latino Population (2010)	655	99.1%	6,743	99.0%	12,212	99.0%
Hispanic or Latino Population (2010)	6	0.9%	66	1.0%	123	1.0%
Not Hispanic or Latino Population (2000)	630	99.5%	6,544	99.3%	11,631	99.3%
Hispanic or Latino Population (2000)	3	0.5%	47	0.7%	88	0.7%
Projected Hispanic Annual Growth (2019 to 2024)	3	3.3%	27	3.5%	45	3.2%
Historic Hispanic Annual Growth (2000 to 2019)	12	18.2%	107	12.1%	193	11.6%

Age Distribution (2019)

Age Under 5	39	5.8%	437	6.4%	783	6.3%
Age 5 to 9 Years	36	5.4%	382	5.5%	739	5.9%
Age 10 to 14 Years	37	5.4%	357	5.2%	687	5.5%
Age 15 to 19 Years	31	4.7%	334	4.9%	632	5.1%
Age 20 to 24 Years	32	4.8%	357	5.2%	628	5.0%
Age 25 to 29 Years	31	4.6%	373	5.4%	680	5.4%
Age 30 to 34 Years	42	6.3%	444	6.5%	790	6.3%
Age 35 to 39 Years	36	5.3%	384	5.6%	727	5.8%
Age 40 to 44 Years	32	4.8%	355	5.2%	690	5.5%
Age 45 to 49 Years	41	6.2%	408	5.9%	771	6.2%
Age 50 to 54 Years	44	6.6%	430	6.2%	813	6.5%
Age 55 to 59 Years	47	7.0%	464	6.7%	910	7.3%
Age 60 to 64 Years	47	6.9%	451	6.6%	844	6.8%
Age 65 to 74 Years	94	14.0%	902	13.1%	1,575	12.6%
Age 75 to 84 Years	54	8.1%	522	7.6%	828	6.6%
Age 85 Years or Over	27	4.1%	279	4.1%	388	3.1%
Median Age	46.1		43.9		43.1	

Gender Age Distribution (2019)

Female Population	347	51.8%	3,528	51.3%	6,306	50.5%
Age 0 to 19 Years	71	20.3%	741	21.0%	1,375	21.8%
Age 20 to 64 Years	174	50.0%	1,803	51.1%	3,347	53.1%
Age 65 Years or Over	103	29.7%	985	27.9%	1,584	25.1%
Female Median Age	48.3		46.0		44.7	
Male Population	324	48.2%	3,351	48.7%	6,179	49.5%
Age 0 to 19 Years	72	22.3%	770	23.0%	1,465	23.7%
Age 20 to 64 Years	179	55.3%	1,863	55.6%	3,507	56.8%
Age 65 Years or Over	72	22.4%	718	21.4%	1,207	19.5%
Male Median Age	44.1		42.1		41.6	

This report was produced using data from private and government sources deemed to be reliable. The information herein is provided without representation or warranty.

EXPANDED PROFILE

2000-2010 Census, 2019 Estimates with 2024 Projections

Calculated using Weighted Block Centroid from Block Groups

Lat/Lon: 40.5411/-76.9223

RF5

1581-1591 US-209

Millersburg, PA 17061

Household Income Distribution (2019)

	1 mi radius		3 mi radius		5 mi radius	
HH Income \$200,000 or More	9	3.1%	76	2.5%	140	2.6%
HH Income \$150,000 to \$199,999	15	5.3%	121	4.0%	259	4.9%
HH Income \$100,000 to \$149,999	31	11.0%	337	11.2%	670	12.6%
HH Income \$75,000 to \$99,999	45	16.2%	466	15.5%	914	17.1%
HH Income \$50,000 to \$74,999	57	20.6%	682	22.7%	1,159	21.7%
HH Income \$35,000 to \$49,999	42	15.1%	414	13.8%	754	14.1%
HH Income \$25,000 to \$34,999	29	10.3%	330	11.0%	499	9.4%
HH Income \$15,000 to \$24,999	26	9.5%	333	11.1%	522	9.8%
HH Income Under \$15,000	25	9.0%	244	8.1%	419	7.9%
HH Income \$35,000 or More	199	71.3%	2,096	69.8%	3,896	73.0%
HH Income \$75,000 or More	99	35.7%	1,001	33.3%	1,983	37.2%

Housing (2019)

Total Housing Units	292		3,193		5,657	
Housing Units Occupied	279	95.5%	3,003	94.0%	5,337	94.3%
Housing Units Owner-Occupied	215	77.0%	2,062	68.7%	3,846	72.1%
Housing Units, Renter-Occupied	64	23.0%	941	31.3%	1,491	27.9%
Housing Units, Vacant	13	4.7%	190	6.3%	320	6.0%

Marital Status (2019)

Never Married	138	24.6%	1,374	24.1%	2,468	24.0%
Currently Married	305	54.6%	3,083	54.1%	5,544	54.0%
Separated	17	3.1%	160	2.8%	311	3.0%
Widowed	53	9.4%	600	10.5%	1,018	9.9%
Divorced	47	8.3%	487	8.5%	935	9.1%

Household Type (2019)

Population Family	539	80.4%	5,437	79.0%	10,168	81.4%
Population Non-Family	99	14.8%	1,256	18.3%	2,088	16.7%
Population Group Quarters	33	4.8%	186	2.7%	230	1.8%
Family Households	194	69.4%	1,910	63.6%	3,533	66.2%
Non-Family Households	85	30.6%	1,092	36.4%	1,804	33.8%
Married Couple with Children	50	16.4%	502	16.3%	953	17.2%
Average Family Household Size	2.8		2.8		2.9	

Household Size (2019)

1 Person Households	73	26.2%	953	31.7%	1,562	29.3%
2 Person Households	114	41.0%	1,112	37.0%	2,022	37.9%
3 Person Households	42	15.2%	429	14.3%	783	14.7%
4 Person Households	33	11.9%	333	11.1%	618	11.6%
5 Person Households	12	4.2%	126	4.2%	238	4.5%
6 or More Person Households	4	1.5%	50	1.7%	113	2.1%

Household Vehicles (2019)

Households with 0 Vehicles Available	15	5.4%	278	9.3%	395	7.4%
Households with 1 Vehicles Available	87	31.4%	944	31.4%	1,602	30.0%
Households with 2 or More Vehicles Available	176	63.2%	1,780	59.3%	3,339	62.6%
Total Vehicles Available	549		5,516		10,343	
Average Vehicles Per Household	2.0		1.8		1.9	

This report was produced using data from private and government sources deemed to be reliable. The information herein is provided without representation or warranty.

EXPANDED PROFILE

2000-2010 Census, 2019 Estimates with 2024 Projections

Calculated using Weighted Block Centroid from Block Groups

Lat/Lon: 40.5411/-76.9223

RF5

1581-1591 US-209

Millersburg, PA 17061

Labor Force (2019)

Estimated Labor Population Age 16 Years or Over	554		5,636		10,133	
Estimated Civilian Employed	323	58.2%	3,378	59.9%	6,183	61.0%
Estimated Civilian Unemployed	5	1.0%	46	0.8%	115	1.1%
Estimated in Armed Forces	-	-	-	-	-	-
Estimated Not in Labor Force	226	40.8%	2,213	39.3%	3,835	37.8%
Unemployment Rate	1.0%		0.8%		1.1%	

Occupation (2019)

Occupation: Population Age 16 Years or Over	323		3,378		6,183	
Management, Business, Financial Operations	32	9.9%	386	11.4%	755	12.2%
Professional, Related	53	16.4%	569	16.8%	1,013	16.4%
Service	43	13.2%	422	12.5%	839	13.6%
Sales, Office	69	21.5%	756	22.4%	1,384	22.4%
Farming, Fishing, Forestry	29	8.9%	212	6.3%	261	4.2%
Construct, Extraction, Maintenance	32	9.9%	381	11.3%	790	12.8%
Production, Transport Material Moving	65	20.2%	651	19.3%	1,141	18.5%
White Collar Workers	154	47.8%	1,711	50.7%	3,152	51.0%
Blue Collar Workers	168	52.2%	1,667	49.3%	3,031	49.0%

Consumer Expenditure (2019)

Total Household Expenditure	\$15.49 M		\$160.73 M		\$287.65 M	
Total Non-Retail Expenditure	\$8.15 M	52.6%	\$84.68 M	52.7%	\$151.36 M	52.6%
Total Retail Expenditure	\$7.34 M	47.4%	\$76.05 M	47.3%	\$136.29 M	47.4%
Apparel	\$534.74 K	3.5%	\$5.54 M	3.4%	\$9.94 M	3.5%
Contributions	\$494.9 K	3.2%	\$5.08 M	3.2%	\$9.12 M	3.2%
Education	\$420.51 K	2.7%	\$4.29 M	2.7%	\$7.77 M	2.7%
Entertainment	\$865.85 K	5.6%	\$8.93 M	5.6%	\$16.06 M	5.6%
Food and Beverages	\$2.3 M	14.8%	\$23.87 M	14.8%	\$42.68 M	14.8%
Furnishings and Equipment	\$539.3 K	3.5%	\$5.56 M	3.5%	\$10.01 M	3.5%
Gifts	\$361.67 K	2.3%	\$3.75 M	2.3%	\$6.72 M	2.3%
Health Care	\$1.36 M	8.8%	\$14.12 M	8.8%	\$25.17 M	8.7%
Household Operations	\$604.44 K	3.9%	\$6.24 M	3.9%	\$11.18 M	3.9%
Miscellaneous Expenses	\$292.39 K	1.9%	\$3.03 M	1.9%	\$5.43 M	1.9%
Personal Care	\$207.84 K	1.3%	\$2.16 M	1.3%	\$3.86 M	1.3%
Personal Insurance	\$106.47 K	0.7%	\$1.09 M	0.7%	\$1.96 M	0.7%
Reading	\$34.04 K	0.2%	\$352.49 K	0.2%	\$629.74 K	0.2%
Shelter	\$3.25 M	21.0%	\$33.91 M	21.1%	\$60.52 M	21.0%
Tobacco	\$100.67 K	0.6%	\$1.06 M	0.7%	\$1.87 M	0.7%
Transportation	\$2.84 M	18.3%	\$29.37 M	18.3%	\$52.74 M	18.3%
Utilities	\$1.19 M	7.7%	\$12.37 M	7.7%	\$21.99 M	7.6%

Educational Attainment (2019)

Adult Population Age 25 Years or Over	496		5,011		9,017	
Elementary (Grade Level 0 to 8)	14	2.8%	195	3.9%	329	3.6%
Some High School (Grade Level 9 to 11)	48	9.6%	500	10.0%	791	8.8%
High School Graduate	215	43.3%	2,109	42.1%	3,994	44.3%
Some College	73	14.8%	775	15.5%	1,372	15.2%
Associate Degree Only	46	9.2%	470	9.4%	877	9.7%
Bachelor Degree Only	77	15.4%	700	14.0%	1,121	12.4%
Graduate Degree	24	4.9%	262	5.2%	533	5.9%

This report was produced using data from private and government sources deemed to be reliable. The information herein is provided without representation or warranty.

EXPANDED PROFILE

2000-2010 Census, 2019 Estimates with 2024 Projections

Calculated using Weighted Block Centroid from Block Groups

Lat/Lon: 40.5411/-76.9223

RF5

1581-1591 US-209

Millersburg, PA 17061

Units In Structure (2019)

	1 mi radius		3 mi radius		5 mi radius	
1 Detached Unit	210	79.5%	2,034	71.2%	3,861	76.4%
1 Attached Unit	19	7.0%	325	11.4%	500	9.9%
2 to 4 Units	16	6.1%	251	8.8%	328	6.5%
5 to 9 Units	4	1.6%	73	2.6%	175	3.5%
10 to 19 Units	7	2.8%	101	3.5%	135	2.7%
20 to 49 Units	3	1.0%	47	1.6%	62	1.2%
50 or More Units	-	-	29	1.0%	35	0.7%
Mobile Home or Trailer	20	7.5%	141	4.9%	240	4.7%
Other Structure	-	-	-	-	-	-

Homes Built By Year (2019)

Homes Built 2010 or later	4	1.5%	36	1.2%	79	1.6%
Homes Built 2000 to 2009	23	8.8%	219	7.7%	452	8.9%
Homes Built 1990 to 1999	36	13.7%	358	12.5%	705	13.9%
Homes Built 1980 to 1989	28	10.5%	283	9.9%	571	11.3%
Homes Built 1970 to 1979	58	22.0%	516	18.1%	897	17.7%
Homes Built 1960 to 1969	20	7.6%	241	8.4%	414	8.2%
Homes Built 1950 to 1959	43	16.3%	430	15.0%	630	12.5%
Homes Built Before 1949	67	25.2%	921	32.3%	1,589	31.4%

Home Values (2019)

Home Values \$1,000,000 or More	-	-	-	-	2	-
Home Values \$500,000 to \$999,999	9	4.5%	67	3.4%	135	3.7%
Home Values \$400,000 to \$499,999	3	1.3%	25	1.3%	58	1.6%
Home Values \$300,000 to \$399,999	7	3.6%	86	4.4%	230	6.3%
Home Values \$200,000 to \$299,999	33	16.4%	334	17.0%	739	20.2%
Home Values \$150,000 to \$199,999	58	28.8%	502	25.5%	900	24.7%
Home Values \$100,000 to \$149,999	39	19.3%	390	19.8%	793	21.7%
Home Values \$70,000 to \$99,999	36	17.8%	372	18.9%	540	14.8%
Home Values \$50,000 to \$69,999	9	4.3%	132	6.7%	194	5.3%
Home Values \$25,000 to \$49,999	13	6.6%	89	4.5%	131	3.6%
Home Values Under \$25,000	6	3.0%	49	2.5%	94	2.6%
Owner-Occupied Median Home Value	\$150,227		\$147,310		\$158,141	
Renter-Occupied Median Rent	\$581		\$599		\$581	

Transportation To Work (2019)

Drive to Work Alone	251	74.6%	2,602	75.1%	4,817	76.6%
Drive to Work in Carpool	47	14.0%	438	12.6%	754	12.0%
Travel to Work by Public Transportation	2	0.5%	13	0.4%	25	0.4%
Drive to Work on Motorcycle	2	0.7%	14	0.4%	22	0.4%
Walk or Bicycle to Work	6	1.7%	127	3.7%	199	3.2%
Other Means	1	0.4%	17	0.5%	42	0.7%
Work at Home	27	8.1%	254	7.3%	425	6.8%

Travel Time (2019)

Travel to Work in 14 Minutes or Less	117	34.8%	1,174	33.9%	1,710	27.2%
Travel to Work in 15 to 29 Minutes	37	11.0%	489	14.1%	1,019	16.2%
Travel to Work in 30 to 59 Minutes	98	29.0%	1,085	31.3%	2,357	37.5%
Travel to Work in 60 Minutes or More	43	12.7%	369	10.6%	661	10.5%
Average Minutes Travel to Work	23.0		23.0		27.1	

This report was produced using data from private and government sources deemed to be reliable. The information herein is provided without representation or warranty.