

COCCA DEVELOPMENT

RETAIL SPACE FOR LEASE

11 GARLAND LANE

GREENVILLE, NY 12083



- Formerly Family Dollar and Photography Studio
- Join Greenville Laundromat & Pizza Parlor, with Rite Aid on adjacent lot facing Route 32
- Large parking lot; tenant pylon sign
- Gorgeous views of Catskill Mountains
- Just 21 miles south of Albany

AVAILABLE SUITE AREA—\$10.50/square foot NNN:

Approximately 8,000 square feet*

Approximately 1,320 square feet*

*Can be combined per space needs

NNN: Base rent plus prorata share of Real Estate Taxes, Insurance, and Common Area expenses, including but not limited to snow removal, lawn care, and parking lot maintenance. Tenant pays separately metered utilities for gas, electric, water, sewer, & trash removal.

CALL 330-729-1010 FOR MORE INFORMATION

www.coccadevelopment.com

EDGE OF PAVEMENT

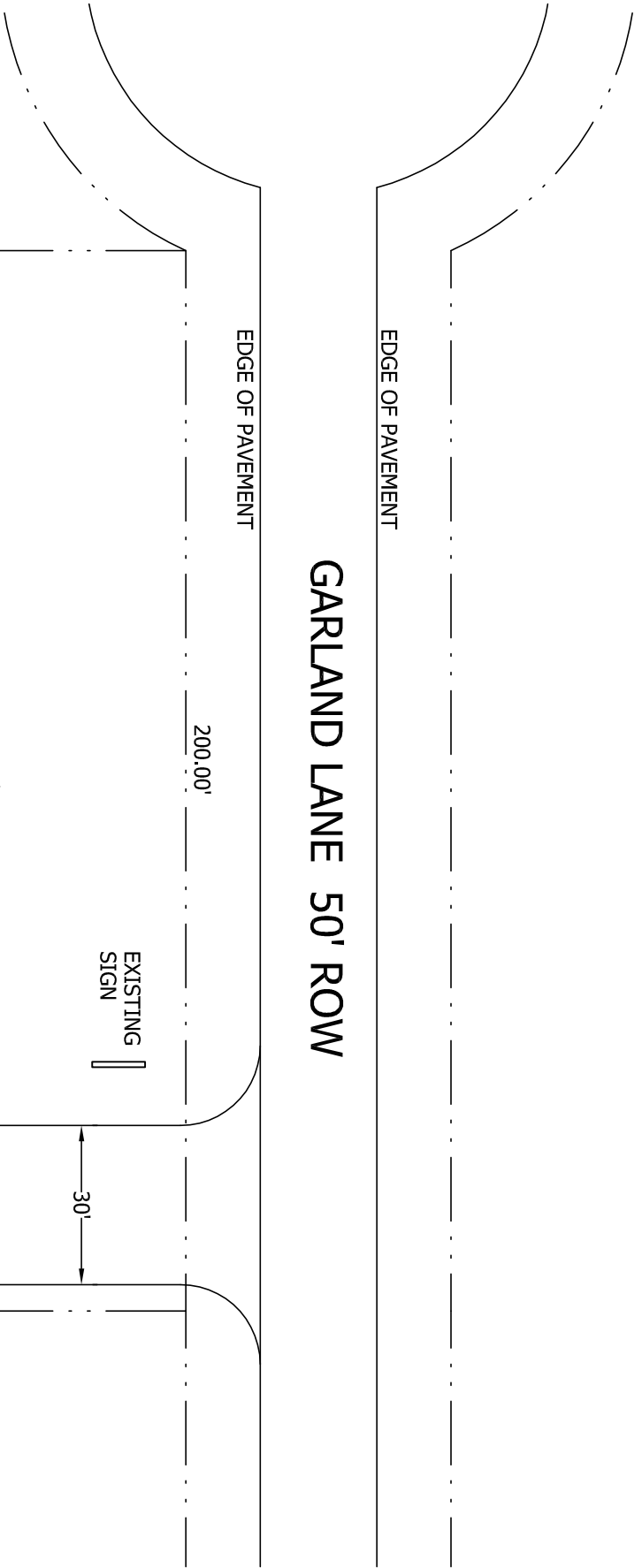
GARLAND LANE 50' ROW

EDGE OF PAVEMENT

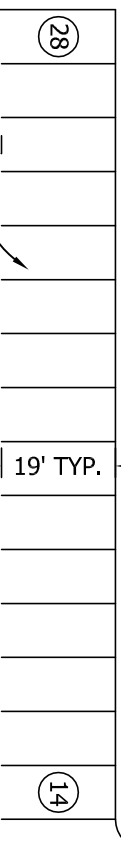
200.00'

EXISTING SIGN

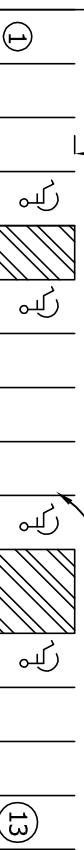
30'



EXISTING PAVED PARKING LOT TO REMAIN UNCHANGED

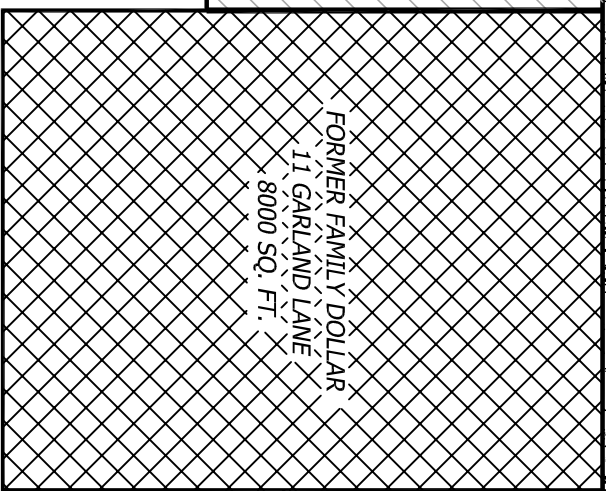
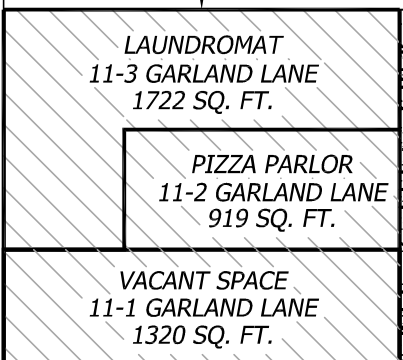


9' TYP.



238.13'

25'



28'-3 7/8"

238.13'

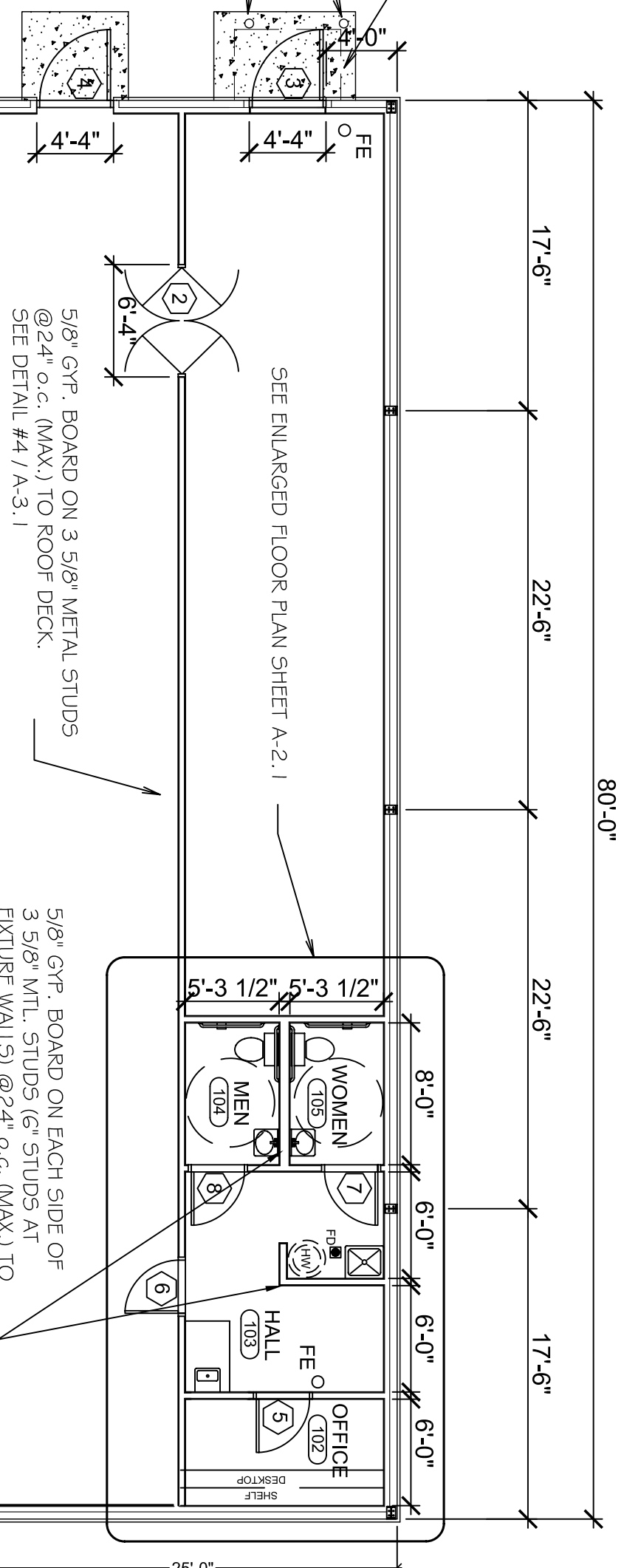
35'

200.00'

EXISTING DUMPSTER PAD 18' X 18'



4" X 6" CANOPY ABOVE DOOR
 6" DIA. PIPE BOLLARDS @ 6'-0" O.C. - FILL WITH CONCRETE



NOTE: INCOMING UTILITY SERVICE LOCATIONS (GAS, WATER & ELEC.) ARE TO BE VERIFIED IN FIELD BY OWNER.

(2) LAYERS OF 5/8" TYPE X GYP BOARD TO BOTTOM OF ROOF DECK ON INTERIOR SIDE OF 3 5/8" (20 GA.) METAL STUDS @ 24" o.c. SEE DETAIL #7 / A-3.1

(2) LAYERS OF 5/8" TYPE X GYP BOARD TO BOTTOM OF ROOF DECK ON EACH OCCUPIED SIDE OF 3 5/8" (20 GA.) METAL STUDS @ 24" o.c. SEE DETAIL #2 / A-3.1 (FUTURE TENANT SIDE TO BE APPLIED WHEN TENANT SPACE IS SECURED AND TO BE OCCUPIED)

STUDS AT FRONT WALL TO BE @ 24" o.c. INSULATED w/ R-13 BATT INSULATION w/ VAPOR BARRIER

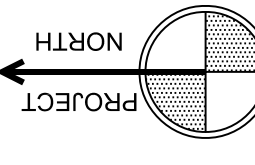
DOOR THRESHOLD NOT TO EXCEED 1/2"

6" DIA. PIPE BOLLARDS @ 6'-0" O.C. - FILL WITH CONCRETE - COORDINATE LOCATION OF HANDICAP RAMP WITH BOLLARD LOCATION AS SHOWN. MAINTAIN 5'-0" MIN. CLEAR WIDTH BETWEEN BOLLARDS AT TOP OF RAMP

OCCUPANT LOAD	
MERCANTILE	7052/300 = 235 OCCUPANTS
STORAGE	585/300 = 2 OCCUPANTS

EGRESS WIDTH	
MERCANTILE	235 * 0.2 = 47 INCHES

FLOOR PLAN
 SCALE: 1/8" = 1'-0"



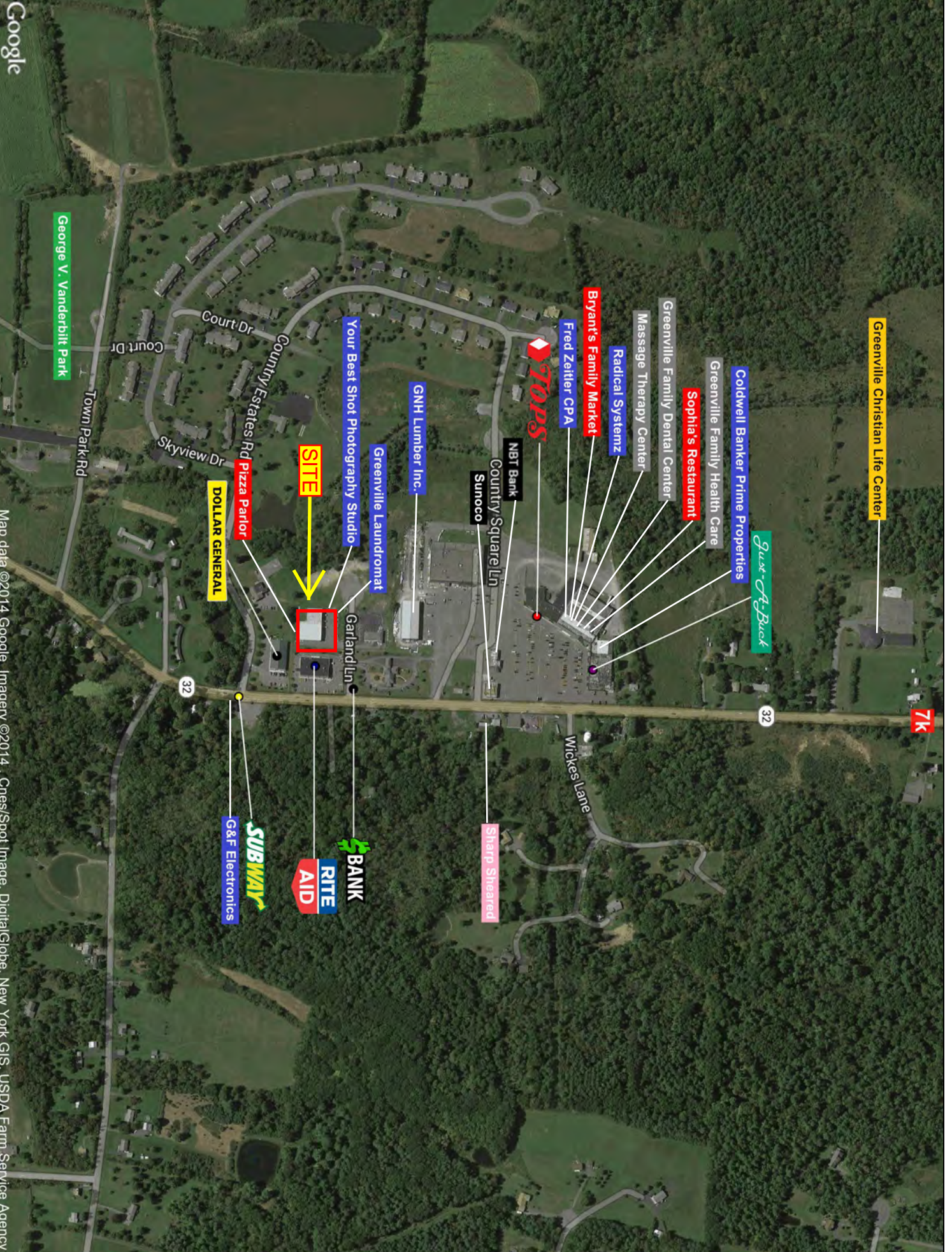
NOTE: PRE-ENGINEERED METAL BUILDING MANUFACTURER TO VERIFY COLUMN SPACING.

FD PROPERTIES, LLC
 100 DEBARTOLO PLACE SUITE 400
 BOARDMAN, OH 44512
 PHONE : 330-729-1010
 FAX: 330-729-1008

FAMILY DOLLAR
 GARLAND LANE
 TOWN OF GREENVILLE
 GREENE COUNTY, NY

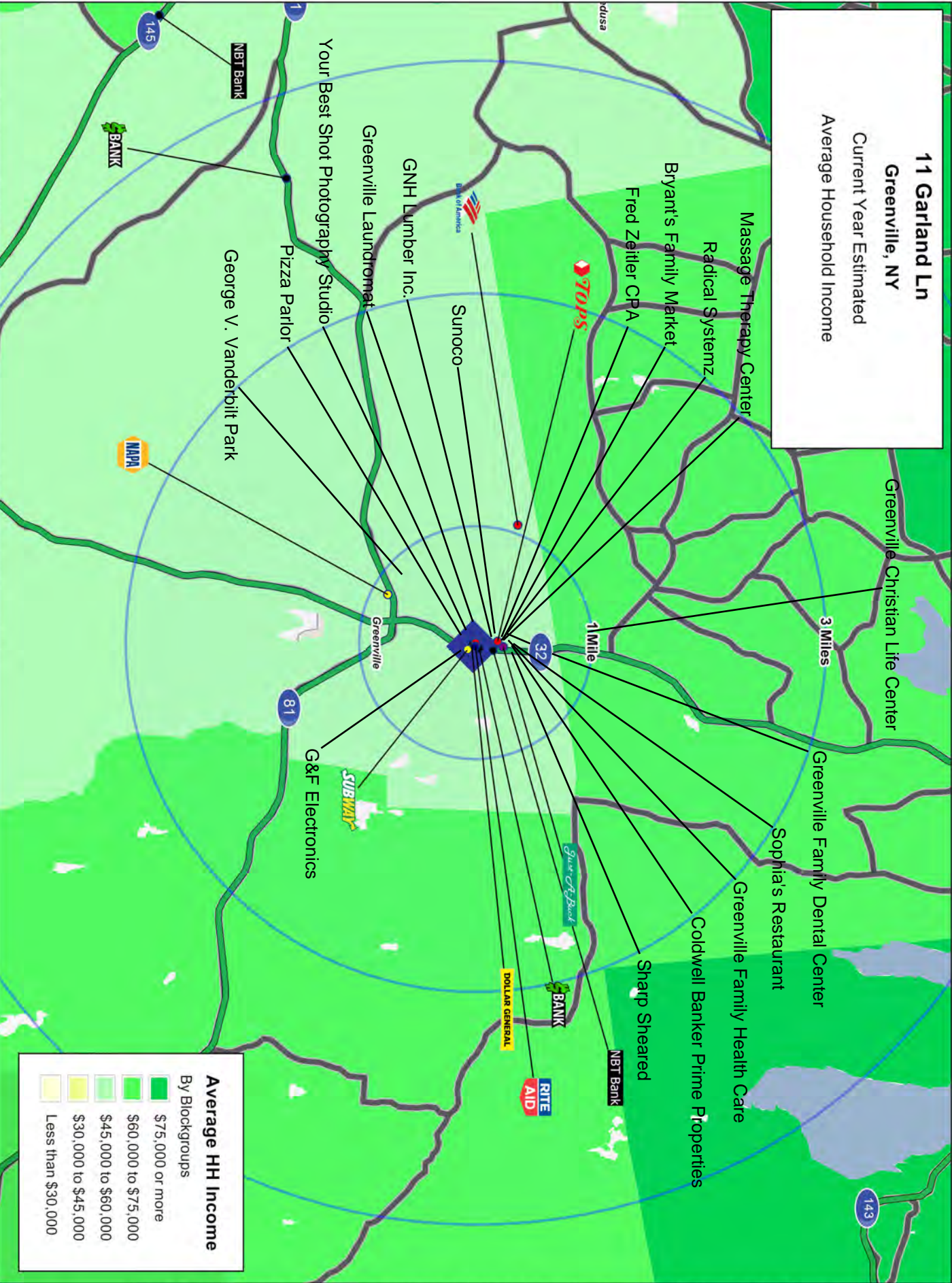
PROJECT:
 DRAWING TITLE:
FLOOR PLAN, SCHEDULES, & DETAILS

DATE:
 SCALE: NOTED
 DRAWN BY:
 SHEET #
A-2.0



Map data ©2014 Google Imagery ©2014 Ches/Spot Image, DigitalGlobe, New York GIS, USDA Farm Service Agency
This map was produced using data from private and government sources deemed to be reliable. The information herein is provided without representation or warranty

11 Garland Ln
Greenville, NY
 Current Year Estimated
 Average Household Income



Average HH Income

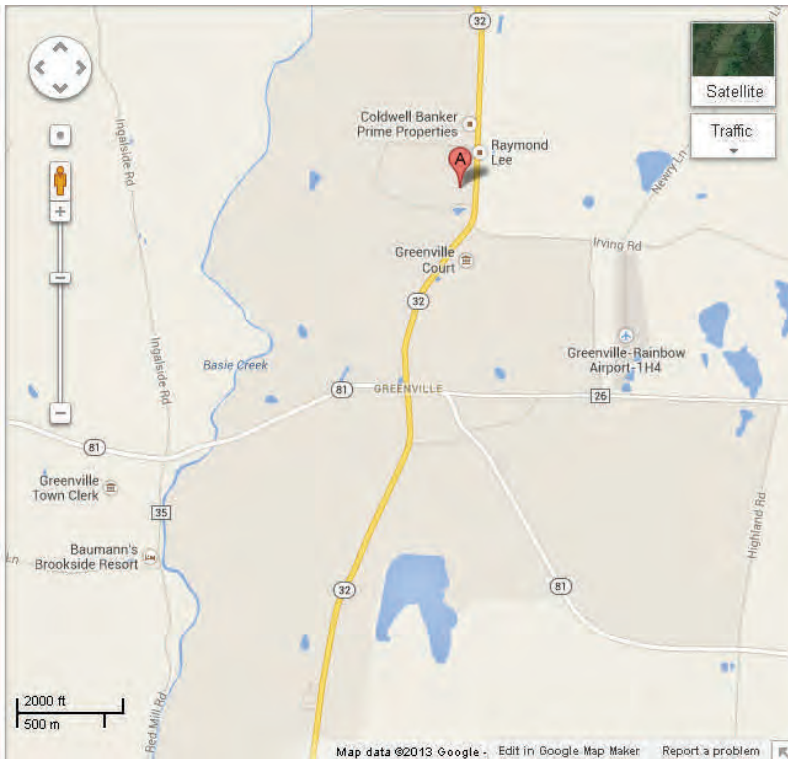
By Blockgroups

Dark Green	\$75,000 or more
Green	\$60,000 to \$75,000
Light Green	\$45,000 to \$60,000
Yellow-Green	\$30,000 to \$45,000
Yellow	Less than \$30,000

This map was produced using data from private and government sources deemed to be reliable. The information herein is provided without representation or warranty.

11 Garland Avenue

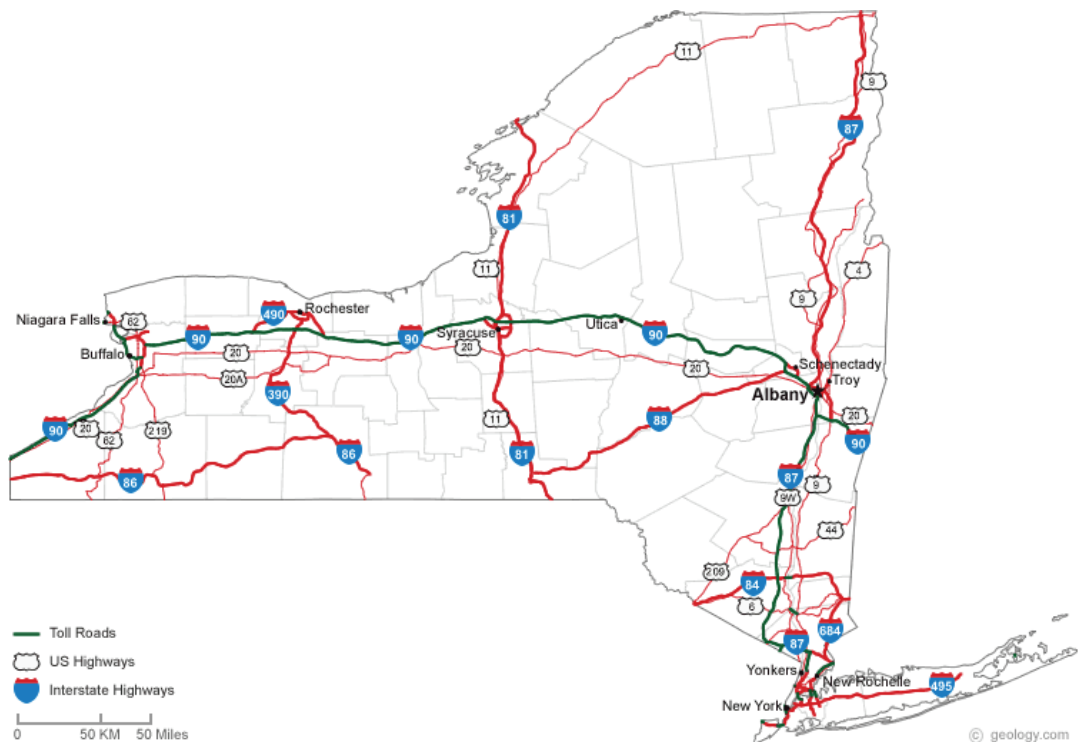
Greenville, NY 12083



The site is ideally located on Garland Avenue, approximately 21 miles south of Albany.

The average daily traffic count on Garland Ave. in front of the center is approximately 7,000.

The area is a rural environment with a friendly atmosphere. It's in close proximity to ski resorts, and there are 3 golf courses in the area.



COCCA DEVELOPMENT, LTD

11 Garland Avenue

Greenville, NY 12083

AT A GLANCE

- ◆ Located on the northern border of Green County, NY, Greenville is also 20.8 miles southwest of Albany, NY
- ◆ Nestled among the highest peaks of the Catskill Mountains and rising above the Hudson River Valley, The Great Northern Catskill of Green County offers the ultimate four seasons destination for outdoor adventures
- ◆ Breathtaking scenery and world class golf
- ◆ The town was first settled around 1774. The town was established in 1803 as the "Town of Greenfield" from the Towns of Coxsackie and Durham. It briefly changed its name to "Freehold" and assumed the name "Greenville" in 1808.

GRAPHIC PROFILE

2000-2010 Census, 2014 Estimates with 2019 Projections

Calculated using Proportional Block Groups

Lat/Lon: 42.4257/-74.0185

RGRAP3

11 Garland Ln

Greenville, NY

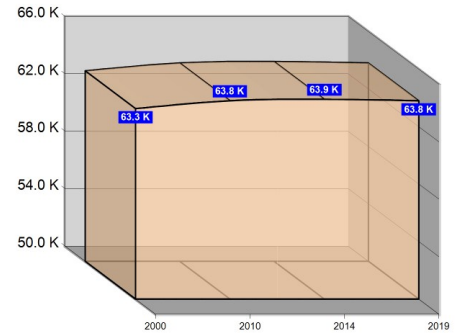
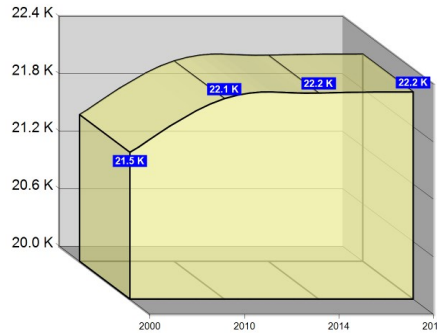
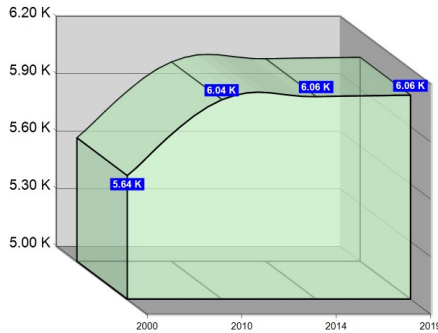
5 Miles

10 Miles

15 Miles

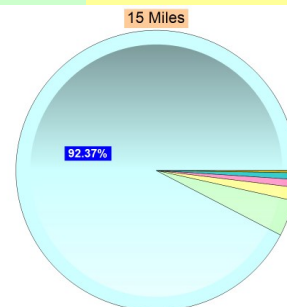
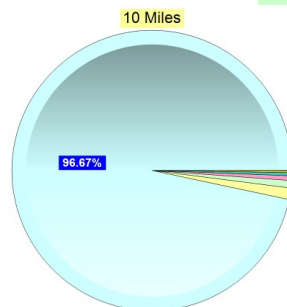
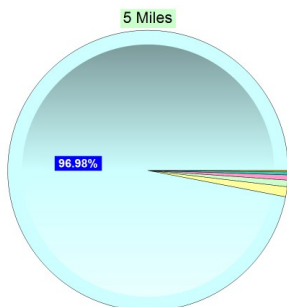
Population

Estimated Population (2014)	6,057	22,152	63,909
Projected Population (2019)	6,064	22,163	63,805
Census Population (2010)	6,040	22,092	63,799
Census Population (2000)	5,644	21,533	63,260
Projected Annual Growth (2014-2019)	7	11	-104
Historical Annual Growth (2010-2014)	17 1.6%	60 0.6%	110 0.2%
Historical Annual Growth (2000-2010)	396 0.7%	559 0.3%	539 0.1%
Estimated Population Density (2014)	77 psm	71 psm	90 psm
Trade Area Size	78.5 sq mi	314.0 sq mi	706.6 sq mi



Race and Ethnicity (2014)

Not Hispanic or Latino Population	5,910 97.6%	21,503 97.1%	61,256 95.8%
White	5,766 97.6%	20,927 97.3%	57,206 93.4%
Black or African American	37 0.6%	160 0.7%	2,429 4.0%
American Indian or Alaska Native	9 0.2%	39 0.2%	125 0.2%
Asian	36 0.6%	116 0.5%	566 0.9%
Hawaiian or Pacific Islander	- -	3 -	18 -
Other Race	3 0.1%	12 0.1%	97 0.2%
Two or More Races	58 1.0%	247 1.1%	816 1.3%
Hispanic or Latino Population	147 2.4%	648 2.9%	2,653 4.2%
White	108 73.5%	487 75.1%	1,830 69.0%
Black or African American	8 5.5%	28 4.3%	236 8.9%
American Indian or Alaska Native	1 0.7%	10 1.5%	21 0.8%
Asian	- 0.3%	5 0.8%	13 0.5%
Hispanic Hawaiian or Pacific Islander	- 0.1%	4 0.6%	4 0.2%
Other Race	17 11.6%	68 10.6%	391 14.7%
Two or More Races	12 8.3%	46 7.1%	158 6.0%



White Black or African American American Indian or Alaska Native Asian Hawaiian or Pacific Islander Other Race 2+ Races

This report was produced using data from private and government sources deemed to be reliable. The information herein is provided without representation or warranty.

GRAPHIC PROFILE

2000-2010 Census, 2014 Estimates with 2019 Projections

Calculated using Proportional Block Groups

Lat/Lon: 42.4257/-74.0185

RGRAP3

11 Garland Ln

Greenville, NY

5 Miles

10 Miles

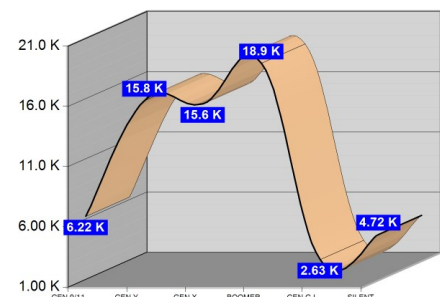
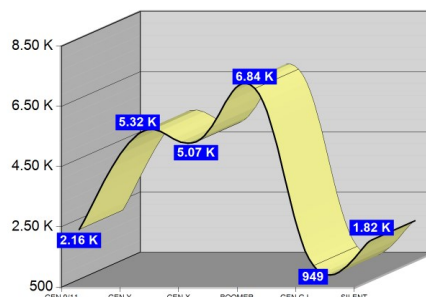
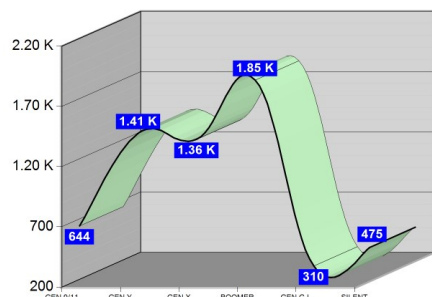
15 Miles

Age Distribution (2014)

	5 Miles	10 Miles	15 Miles
Age Under 5 Years	315 5.2%	1,057 4.8%	2,990 4.7%
Age 5 to 9 Years	329 5.4%	1,102 5.0%	3,228 5.1%
Age 10 to 14 Years	345 5.7%	1,316 5.9%	3,699 5.8%
Age 15 to 19 Years	400 6.6%	1,458 6.6%	4,474 7.0%
Age 20 to 24 Years	334 5.5%	1,222 5.5%	4,072 6.4%
Age 25 to 29 Years	283 4.7%	1,074 4.9%	3,320 5.2%
Age 30 to 34 Years	264 4.4%	996 4.5%	3,253 5.1%
Age 35 to 39 Years	301 5.0%	1,123 5.1%	3,546 5.5%
Age 40 to 44 Years	370 6.1%	1,464 6.6%	4,158 6.5%
Age 45 to 49 Years	477 7.9%	1,737 7.8%	4,883 7.6%
Age 50 to 54 Years	538 8.9%	1,926 8.7%	5,335 8.3%
Age 55 to 59 Years	484 8.0%	1,767 8.0%	5,028 7.9%
Age 60 to 64 Years	424 7.0%	1,642 7.4%	4,591 7.2%
Age 65 to 69 Years	407 6.7%	1,502 6.8%	3,984 6.2%
Age 70 to 74 Years	280 4.6%	1,109 5.0%	2,823 4.4%
Age 75 to 79 Years	194 3.2%	708 3.2%	1,899 3.0%
Age 80 to 84 Years	150 2.5%	499 2.3%	1,344 2.1%
Age 85 Years or Over	160 2.6%	450 2.0%	1,284 2.0%
Median Age	44.9	44.8	43.2

Generation (2014)

	5 Miles	10 Miles	15 Miles
Generation 9/11 Millennials (Age Under 10 Years)	644 10.6%	2,159 9.7%	6,218 9.7%
Gen Y to Echo Boomers (Age 10 to 29 Years)	1,362 22.5%	5,070 22.9%	15,564 24.4%
Gen Xers (Age 30 to 49 Years)	1,412 23.3%	5,319 24.0%	15,839 24.8%
Baby Boomers (Age 50 to 69 Years)	1,854 30.6%	6,837 30.9%	18,938 29.6%
Silent Generation (Age 70 to 79 Years)	475 7.8%	1,818 8.2%	4,721 7.4%
G.I. Generation (Age 80 Years or Over)	310 5.1%	949 4.3%	2,628 4.1%



This report was produced using data from private and government sources deemed to be reliable. The information herein is provided without representation or warranty.

GRAPHIC PROFILE

2000-2010 Census, 2014 Estimates with 2019 Projections

Calculated using Proportional Block Groups

Lat/Lon: 42.4257/-74.0185

RGRAP3

11 Garland Ln

Greenville, NY

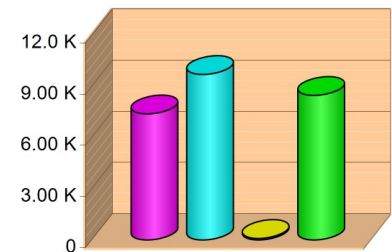
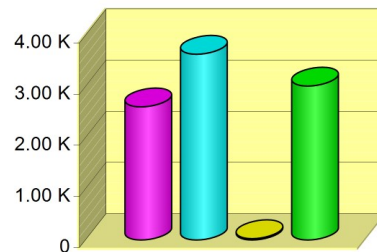
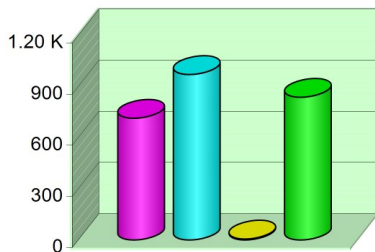
5 Miles

10 Miles

15 Miles

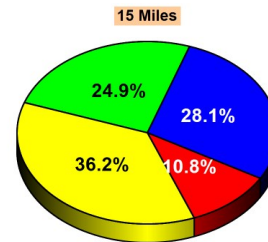
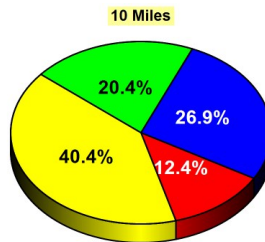
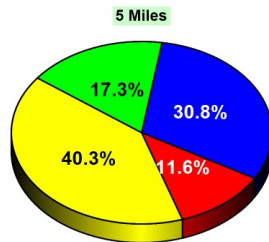
Household Type (2014)

	5 Miles	10 Miles	15 Miles
Total Households	2,528	9,274	25,683
Family Households	1,685 38.4%	6,237 39.2%	17,109 37.8%
Family Households with Children	714 42.4%	2,603 41.7%	7,399 43.2%
Family Households No Children	971 57.6%	3,633 58.3%	9,710 56.8%
Non-Family Households	843 38.4%	3,037 39.2%	8,574 37.8%
Non-Family Households with Children	6 0.7%	27 0.9%	90 1.1%
Non-Family Households No Children	837 99.3%	3,011 99.1%	8,484 98.9%



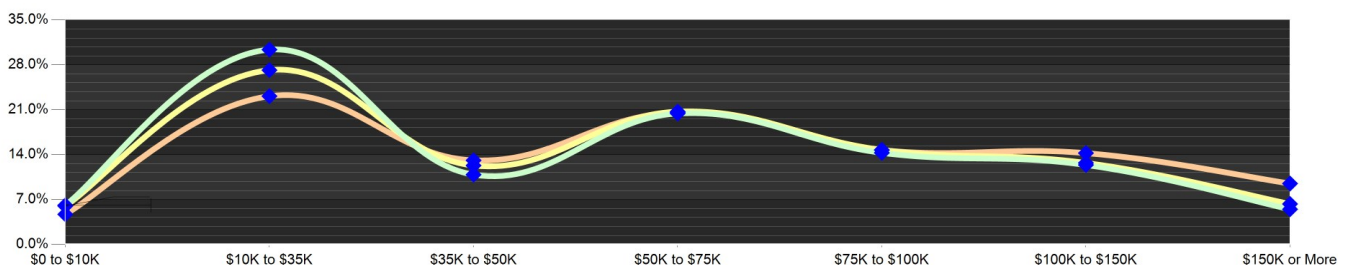
Education Attainment (2014)

	5 Miles	10 Miles	15 Miles
Elementary or Some High School	502 11.6%	1,973 12.4%	4,738 10.8%
High School Graduate	1,745 40.3%	6,446 40.4%	15,868 36.2%
Some College or Associate Degree	1,335 30.8%	4,294 26.9%	12,304 28.1%
Bachelor or Graduate Degree	747 17.3%	3,257 20.4%	10,897 24.9%



Household Income (2014)

	5 Miles	10 Miles	15 Miles
Estimated Average Household Income	\$56,792	\$62,121	\$69,210
Estimated Median Household Income	\$48,630	\$51,844	\$56,629
HH Income Under \$10,000	155 6.1%	556 6.0%	1,209 4.7%
HH Income \$10,000 to \$34,999	768 30.4%	2,521 27.2%	5,940 23.1%
HH Income \$35,000 to \$49,999	275 10.9%	1,142 12.3%	3,369 13.1%
HH Income \$50,000 to \$74,999	516 20.4%	1,921 20.7%	5,286 20.6%
HH Income \$75,000 to \$99,999	314 12.4%	1,179 12.7%	3,659 14.2%
HH Income \$100,000 to \$149,999	314 12.4%	1,179 12.7%	3,659 14.2%
HH Income \$150,000 or More	139 5.5%	586 6.3%	2,440 9.5%



This report was produced using data from private and government sources deemed to be reliable. The information herein is provided without representation or warranty.

EXPANDED PROFILE

2000-2010 Census, 2014 Estimates with 2019 Projections

Calculated using Proportional Block Groups

Lat/Lon: 42.4257/-74.0185

RF5

11 Garland Ln Greenville, NY	5 Miles	10 Miles	15 Miles
Population			
Estimated Population (2014)	6,057	22,152	63,909
Projected Population (2019)	6,064	22,163	63,805
Census Population (2010)	6,040	22,092	63,799
Census Population (2000)	5,644	21,533	63,260
Projected Annual Growth (2014 to 2019)	7 -	11 -	-104 -
Historical Annual Growth (2010 to 2014)	17 0.1%	60 0.1%	110 -
Historical Annual Growth (2000 to 2010)	396 0.7%	559 0.3%	539 0.1%
Estimated Population Density (2014)	77 psm	71 psm	90 psm
Trade Area Size	78.49 sq mi	314.02 sq mi	706.57 sq mi
Households			
Estimated Households (2014)	2,528	9,274	25,683
Projected Households (2019)	2,594	9,515	26,351
Census Households (2010)	2,472	9,071	25,148
Census Households (2000)	2,241	8,457	23,716
Estimated Households with Children (2014)	720 28.5%	2,630 28.4%	7,489 29.2%
Estimated Average Household Size (2014)	2.39	2.38	2.37
Average Household Income			
Estimated Average Household Income (2014)	\$62,719	\$66,354	\$75,584
Projected Average Household Income (2019)	\$68,096	\$72,150	\$82,230
Estimated Average Family Income (2014)	\$73,088	\$75,532	\$87,028
Median Household Income			
Estimated Median Household Income (2014)	\$50,869	\$54,546	\$61,059
Projected Median Household Income (2019)	\$55,025	\$59,529	\$66,168
Estimated Median Family Income (2014)	\$67,594	\$67,868	\$75,014
Per Capita Income			
Estimated Per Capita Income (2014)	\$26,189	\$27,795	\$30,938
Projected Per Capita Income (2019)	\$29,138	\$30,994	\$34,529
Estimated Per Capita income 5 Year Growth	\$2,949 11.3%	\$3,199 11.5%	\$3,591 11.6%
Estimated Average Household Net Worth (2014)	\$426,770	\$440,424	\$486,406
Daytime Demos (2014)			
Total Businesses	198	678	2,036
Total Employees	1,365	4,525	17,173
Company Headquarter Businesses	- -	- 0.1%	3 0.1%
Company Headquarter Employees	- -	42 0.9%	187 1.1%
Employee Population per Business	6.9	6.7	8.4
Residential Population per Business	30.6	32.7	31.4

This report was produced using data from private and government sources deemed to be reliable. The information herein is provided without representation or warranty.

EXPANDED PROFILE

2000-2010 Census, 2014 Estimates with 2019 Projections

Calculated using Proportional Block Groups

Lat/Lon: 42.4257/-74.0185

RF5

11 Garland Ln						
Greenville, NY						
	5 Miles		10 Miles		15 Miles	
Race & Ethnicity						
White (2014)	5,874	97.0%	21,414	96.7%	59,036	92.4%
Black or African American (2014)	46	0.8%	188	0.8%	2,664	4.2%
American Indian or Alaska Native (2014)	10	0.2%	49	0.2%	146	0.2%
Asian (2014)	36	0.6%	121	0.5%	579	0.9%
Hawaiian or Pacific Islander (2014)	-	-	7	-	22	-
Other Race (2014)	21	0.3%	80	0.4%	487	0.8%
Two or More Races (2014)	70	1.2%	293	1.3%	974	1.5%
Not Hispanic or Latino Population (2014)	5,910	97.6%	21,503	97.1%	61,256	95.8%
Hispanic or Latino Population (2014)	147	2.4%	648	2.9%	2,653	4.2%
Not Hispanic or Latino Population (2019)	5,902	97.3%	21,453	96.8%	60,965	95.5%
Hispanic or Latino Population (2019)	162	2.7%	710	3.2%	2,840	4.5%
Not Hispanic or Latino Population (2010)	5,904	97.8%	21,496	97.3%	61,331	96.1%
Hispanic or Latino Population (2010)	136	2.2%	596	2.7%	2,468	3.9%
Not Hispanic or Latino Population (2000)	5,561	98.5%	21,097	98.0%	61,158	96.7%
Hispanic or Latino Population (2000)	83	1.5%	435	2.0%	2,102	3.3%
Projected Hispanic Annual Growth (2014 to 2019)	15	2.0%	61	1.9%	187	1.4%
Historic Hispanic Annual Growth (2000 to 2014)	64	5.5%	213	3.5%	551	1.9%
Age Distribution (2014)						
Age Under 5	315	5.2%	1,057	4.8%	2,990	4.7%
Age 5 to 9 Years	329	5.4%	1,102	5.0%	3,228	5.1%
Age 10 to 14 Years	345	5.7%	1,316	5.9%	3,699	5.8%
Age 15 to 19 Years	400	6.6%	1,458	6.6%	4,474	7.0%
Age 20 to 24 Years	334	5.5%	1,222	5.5%	4,072	6.4%
Age 25 to 29 Years	283	4.7%	1,074	4.9%	3,320	5.2%
Age 30 to 34 Years	264	4.4%	996	4.5%	3,253	5.1%
Age 35 to 39 Years	301	5.0%	1,123	5.1%	3,546	5.5%
Age 40 to 44 Years	370	6.1%	1,464	6.6%	4,158	6.5%
Age 45 to 49 Years	477	7.9%	1,737	7.8%	4,883	7.6%
Age 50 to 54 Years	538	8.9%	1,926	8.7%	5,335	8.3%
Age 55 to 59 Years	484	8.0%	1,767	8.0%	5,028	7.9%
Age 60 to 64 Years	424	7.0%	1,642	7.4%	4,591	7.2%
Age 65 to 74 Years	687	11.3%	2,611	11.8%	6,807	10.7%
Age 75 to 84 Years	344	5.7%	1,207	5.4%	3,243	5.1%
Age 85 Years or Over	160	2.6%	450	2.0%	1,284	2.0%
Median Age	44.9		44.8		43.2	
Gender Age Distribution (2014)						
Female Population	3,045	50.3%	11,076	50.0%	30,781	48.2%
Age 0 to 19 Years	683	22.4%	2,423	21.9%	6,740	21.9%
Age 20 to 64 Years	1,727	56.7%	6,424	58.0%	18,084	58.7%
Age 65 Years or Over	635	20.9%	2,229	20.1%	5,958	19.4%
Female Median Age	45.1		44.9		44.6	
Male Population	3,012	49.7%	11,076	50.0%	33,128	51.8%
Age 0 to 19 Years	706	23.4%	2,509	22.7%	7,652	23.1%
Age 20 to 64 Years	1,750	58.1%	6,527	58.9%	20,101	60.7%
Age 65 Years or Over	557	18.5%	2,040	18.4%	5,375	16.2%
Male Median Age	44.7		44.6		41.8	

This report was produced using data from private and government sources deemed to be reliable. The information herein is provided without representation or warranty.

EXPANDED PROFILE

2000-2010 Census, 2014 Estimates with 2019 Projections

Calculated using Proportional Block Groups

Lat/Lon: 42.4257/-74.0185

RF5

11 Garland Ln

Greenville, NY

Household Income Distribution (2014)

	5 Miles		10 Miles		15 Miles	
HH Income \$200,000 or More	55	2.2%	228	2.5%	985	3.8%
HH Income \$150,000 to \$199,999	84	3.3%	358	3.9%	1,455	5.7%
HH Income \$100,000 to \$149,999	314	12.4%	1,179	12.7%	3,659	14.2%
HH Income \$75,000 to \$99,999	361	14.3%	1,368	14.7%	3,781	14.7%
HH Income \$50,000 to \$74,999	516	20.4%	1,921	20.7%	5,286	20.6%
HH Income \$35,000 to \$49,999	275	10.9%	1,142	12.3%	3,369	13.1%
HH Income \$25,000 to \$34,999	375	14.8%	1,000	10.8%	2,487	9.7%
HH Income \$15,000 to \$24,999	255	10.1%	1,156	12.5%	2,589	10.1%
HH Income Under \$15,000	293	11.6%	922	9.9%	2,072	8.1%
HH Income \$35,000 or More	1,606	63.5%	6,196	66.8%	18,535	72.2%
HH Income \$75,000 or More	814	32.2%	3,133	33.8%	9,880	38.5%

Housing (2014)

	5 Miles		10 Miles		15 Miles	
Total Housing Units	3,041		11,505		32,267	
Housing Units Occupied	2,528	83.1%	9,274	80.6%	25,683	79.6%
Housing Units Owner-Occupied	2,061	81.5%	7,455	80.4%	19,755	76.9%
Housing Units, Renter-Occupied	467	18.5%	1,819	19.6%	5,928	23.1%
Housing Units, Vacant	513	16.9%	2,231	19.4%	6,584	20.4%

Marital Status (2014)

	5 Miles		10 Miles		15 Miles	
Never Married	1,414	27.9%	5,440	29.1%	17,422	32.3%
Currently Married	2,610	51.5%	9,530	51.0%	26,246	48.6%
Separated	128	2.5%	844	4.5%	2,580	4.8%
Widowed	477	9.4%	1,282	6.9%	3,186	5.9%
Divorced	439	8.7%	1,581	8.5%	4,558	8.4%

Household Type (2014)

	5 Miles		10 Miles		15 Miles	
Population Family	4,900	80.9%	17,946	81.0%	49,168	76.9%
Population Non-Family	1,151	19.0%	4,168	18.8%	11,648	18.2%
Population Group Quarters	6	0.1%	37	0.2%	3,093	4.8%
Family Households	1,685	66.7%	6,237	67.2%	17,109	66.6%
Non-Family Households	843	33.3%	3,037	32.8%	8,574	33.4%
Married Couple with Children	519	19.9%	1,805	18.9%	5,045	19.2%
Average Family Household Size	2.9		2.9		2.9	

Household Size (2014)

	5 Miles		10 Miles		15 Miles	
1 Person Households	685	27.1%	2,449	26.4%	6,945	27.0%
2 Person Households	944	37.3%	3,479	37.5%	9,456	36.8%
3 Person Households	361	14.3%	1,440	15.5%	4,067	15.8%
4 Person Households	308	12.2%	1,139	12.3%	3,220	12.5%
5 Person Households	141	5.6%	515	5.6%	1,338	5.2%
6 or More Person Households	89	3.5%	252	2.7%	657	2.6%

Household Vehicles (2014)

	5 Miles		10 Miles		15 Miles	
Households with 0 Vehicles Available	163	6.5%	534	5.8%	1,530	6.0%
Households with 1 Vehicles Available	796	31.5%	2,833	30.5%	8,309	32.4%
Households with 2 or More Vehicles Available	1,569	62.1%	5,907	63.7%	15,844	61.7%
Total Vehicles Available	4,887		17,817		47,857	
Average Vehicles Per Household	1.9		1.9		1.9	

This report was produced using data from private and government sources deemed to be reliable. The information herein is provided without representation or warranty.

EXPANDED PROFILE

2000-2010 Census, 2014 Estimates with 2019 Projections

Calculated using Proportional Block Groups

Lat/Lon: 42.4257/-74.0185

RF5

11 Garland Ln

Greenville, NY

Labor Force (2014)

	5 Miles	10 Miles	15 Miles
Estimated Labor Population Age 16 Years or Over	4,992	18,388	50,207
Estimated Civilian Employed	2,720 54.5%	10,025 54.5%	28,704 57.2%
Estimated Civilian Unemployed	176 3.5%	718 3.9%	1,820 3.6%
Estimated in Armed Forces	1 -	15 0.1%	28 0.1%
Estimated Not in Labor Force	2,095 42.0%	7,631 41.5%	19,654 39.1%
Unemployment Rate	3.5%	3.9%	3.6%

Occupation (2010)

	5 Miles	10 Miles	15 Miles
Occupation: Population Age 16 Years or Over	2,826	10,146	29,144
Management, Business, Financial Operations	355 12.6%	1,131 11.1%	3,794 13.0%
Professional, Related	609 21.6%	2,187 21.6%	6,779 23.3%
Service	518 18.3%	1,945 19.2%	5,297 18.2%
Sales, Office	605 21.4%	2,370 23.4%	6,847 23.5%
Farming, Fishing, Forestry	21 0.7%	56 0.5%	106 0.4%
Construct, Extraction, Maintenance	417 14.7%	1,343 13.2%	3,178 10.9%
Production, Transport Material Moving	301 10.7%	1,116 11.0%	3,143 10.8%
White Collar Workers	1,570 55.5%	5,688 56.1%	17,420 59.8%
Blue Collar Workers	1,257 44.5%	4,459 43.9%	11,724 40.2%

Consumer Expenditure (2014)

	5 Miles	10 Miles	15 Miles
Total Household Expenditure	\$129 M	\$491 M	\$1.49 B
Total Non-Retail Expenditure	\$74.1 M 57.4%	\$283 M 57.5%	\$857 M 57.6%
Total Retail Expenditure	\$54.9 M 42.6%	\$209 M 42.5%	\$632 M 42.4%
Apparel	\$6.15 M 4.8%	\$23.4 M 4.8%	\$71.2 M 4.8%
Contributions	\$4.70 M 3.6%	\$18.1 M 3.7%	\$57.2 M 3.8%
Education	\$2.96 M 2.3%	\$11.4 M 2.3%	\$36.3 M 2.4%
Entertainment	\$7.19 M 5.6%	\$27.5 M 5.6%	\$83.5 M 5.6%
Food and Beverages	\$19.9 M 15.4%	\$75.4 M 15.3%	\$226 M 15.2%
Furnishings and Equipment	\$5.63 M 4.4%	\$21.6 M 4.4%	\$66.1 M 4.4%
Gifts	\$3.37 M 2.6%	\$13.0 M 2.6%	\$40.5 M 2.7%
Health Care	\$8.05 M 6.2%	\$30.4 M 6.2%	\$90.3 M 6.1%
Household Operations	\$4.53 M 3.5%	\$17.4 M 3.5%	\$54.3 M 3.6%
Miscellaneous Expenses	\$2.17 M 1.7%	\$8.25 M 1.7%	\$24.7 M 1.7%
Personal Care	\$1.87 M 1.4%	\$7.11 M 1.4%	\$21.5 M 1.4%
Personal Insurance	\$1.29 M 1.0%	\$4.98 M 1.0%	\$15.6 M 1.0%
Reading	\$423 K 0.3%	\$1.61 M 0.3%	\$4.91 M 0.3%
Shelter	\$24.9 M 19.3%	\$94.9 M 19.3%	\$288 M 19.4%
Tobacco	\$860 K 0.7%	\$3.23 M 0.7%	\$9.36 M 0.6%
Transportation	\$26.0 M 20.1%	\$98.9 M 20.1%	\$297 M 20.0%
Utilities	\$9.08 M 7.0%	\$34.3 M 7.0%	\$102 M 6.9%

Educational Attainment (2014)

	5 Miles	10 Miles	15 Miles
Adult Population Age 25 Years or Over	4,329	15,970	43,807
Elementary (Grade Level 0 to 8)	142 3.3%	634 4.0%	1,577 3.6%
Some High School (Grade Level 9 to 11)	360 8.3%	1,339 8.4%	3,160 7.2%
High School Graduate	1,745 40.3%	6,446 40.4%	15,868 36.2%
Some College	935 21.6%	2,895 18.1%	7,754 17.7%
Associate Degree Only	400 9.2%	1,399 8.8%	4,550 10.4%
Bachelor Degree Only	454 10.5%	1,701 10.7%	5,768 13.2%
Graduate Degree	293 6.8%	1,556 9.7%	5,129 11.7%

This report was produced using data from private and government sources deemed to be reliable. The information herein is provided without representation or warranty.

EXPANDED PROFILE

2000-2010 Census, 2014 Estimates with 2019 Projections

Calculated using Proportional Block Groups

Lat/Lon: 42.4257/-74.0185

RF5

11 Garland Ln Greenville, NY	5 Miles		10 Miles		15 Miles	
Units In Structure (2010)						
1 Detached Unit	1,879	76.0%	6,860	75.6%	18,144	72.1%
1 Attached Unit	46	1.8%	89	1.0%	434	1.7%
2 to 4 Units	180	7.3%	811	8.9%	2,673	10.6%
5 to 9 Units	47	1.9%	153	1.7%	709	2.8%
10 to 19 Units	11	0.4%	71	0.8%	385	1.5%
20 to 49 Units	13	0.5%	97	1.1%	357	1.4%
50 or More Units	33	1.3%	104	1.2%	346	1.4%
Mobile Home or Trailer	264	10.7%	882	9.7%	2,024	8.1%
Other Structure	-	-	4	-	76	0.3%
Homes Built By Year (2010)						
Homes Built 2005 or later	169	6.9%	410	4.5%	947	3.8%
Homes Built 2000 to 2004	139	5.6%	435	4.8%	1,048	4.2%
Homes Built 1990 to 1999	210	8.5%	835	9.2%	2,544	10.1%
Homes Built 1980 to 1989	286	11.6%	1,010	11.1%	2,797	11.1%
Homes Built 1970 to 1979	265	10.7%	1,108	12.2%	3,174	12.6%
Homes Built 1960 to 1969	270	10.9%	959	10.6%	2,620	10.4%
Homes Built 1950 to 1959	336	13.6%	1,121	12.4%	3,104	12.3%
Homes Built Before 1949	796	32.2%	3,193	35.2%	8,915	35.5%
Home Values (2010)						
Home Values \$1,000,000 or More	26	1.3%	107	1.5%	284	1.5%
Home Values \$500,000 to \$999,999	110	5.5%	417	5.7%	1,097	5.7%
Home Values \$400,000 to \$499,999	110	5.4%	374	5.1%	1,024	5.3%
Home Values \$300,000 to \$399,999	204	10.1%	862	11.8%	2,354	12.2%
Home Values \$200,000 to \$299,999	522	25.9%	1,720	23.6%	4,667	24.1%
Home Values \$150,000 to \$199,999	361	17.9%	1,414	19.4%	3,973	20.5%
Home Values \$100,000 to \$149,999	404	20.1%	1,373	18.8%	3,088	16.0%
Home Values \$70,000 to \$99,999	128	6.4%	484	6.6%	1,222	6.3%
Home Values \$50,000 to \$69,999	66	3.3%	175	2.4%	453	2.3%
Home Values \$25,000 to \$49,999	51	2.5%	187	2.6%	487	2.5%
Home Values Under \$25,000	33	1.6%	175	2.4%	696	3.6%
Owner-Occupied Median Home Value	\$207,374		\$196,858		\$202,234	
Renter-Occupied Median Rent	\$656		\$619		\$637	
Transportation To Work (2010)						
Drive to Work Alone	2,207	80.7%	7,941	80.5%	23,287	81.6%
Drive to Work in Carpool	233	8.5%	729	7.4%	2,135	7.5%
Travel to Work by Public Transportation	71	2.6%	353	3.6%	933	3.3%
Drive to Work on Motorcycle	24	0.9%	29	0.3%	104	0.4%
Walk or Bicycle to Work	31	1.1%	159	1.6%	580	2.0%
Other Means	75	2.7%	264	2.7%	489	1.7%
Work at Home	96	3.5%	384	3.9%	1,016	3.6%
Travel Time (2010)						
Travel to Work in 14 Minutes or Less	671	25.4%	2,401	25.3%	6,951	25.3%
Travel to Work in 15 to 29 Minutes	719	27.2%	2,680	28.3%	9,293	33.8%
Travel to Work in 30 to 59 Minutes	1,048	39.7%	3,636	38.4%	9,589	34.8%
Travel to Work in 60 Minutes or More	202	7.7%	758	8.0%	1,697	6.2%
Average Minutes Travel to Work	27.5		26.6		24.5	

This report was produced using data from private and government sources deemed to be reliable. The information herein is provided without representation or warranty.