

COCCA DEVELOPMENT

RETAIL SPACE FOR LEASE

1607 WHEELING AVENUE

GLENDALE, WV 26036



- Located next to Tractor Supply
- Large lot with ample parking and tenant pylon sign
- Located approximately a mile south of the center of Glen Dale on Wheeling Avenue and one and a half miles north of Moundsville
- Reynolds Memorial Hospital is 1/2 mile north; John Marshall High School is 1/4 mile north
- Walmart Supercenter is 1/2 mile south

AVAILABLE SUITE AREA—\$8/square foot NNN:

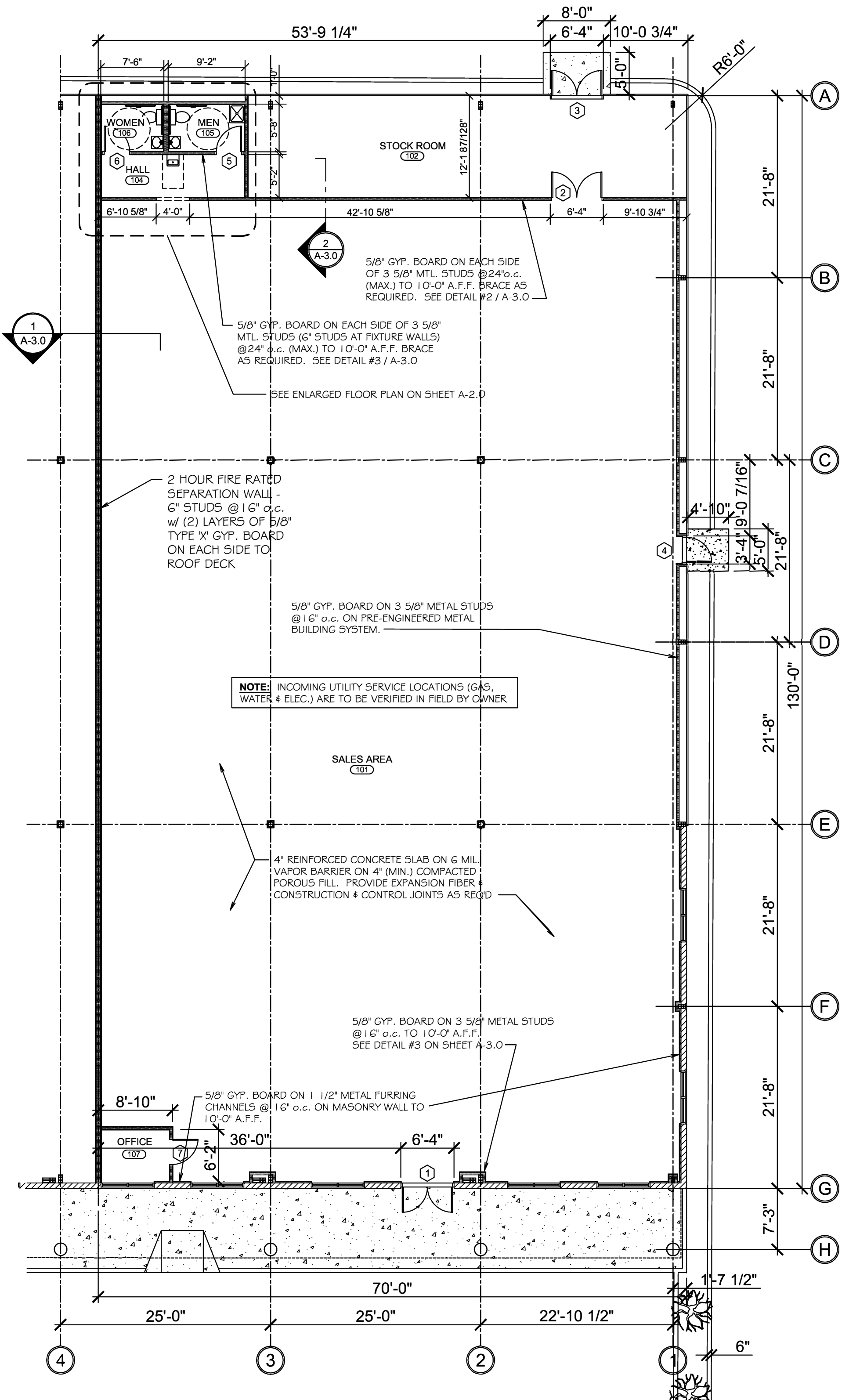
Approximately 9,100 square feet*

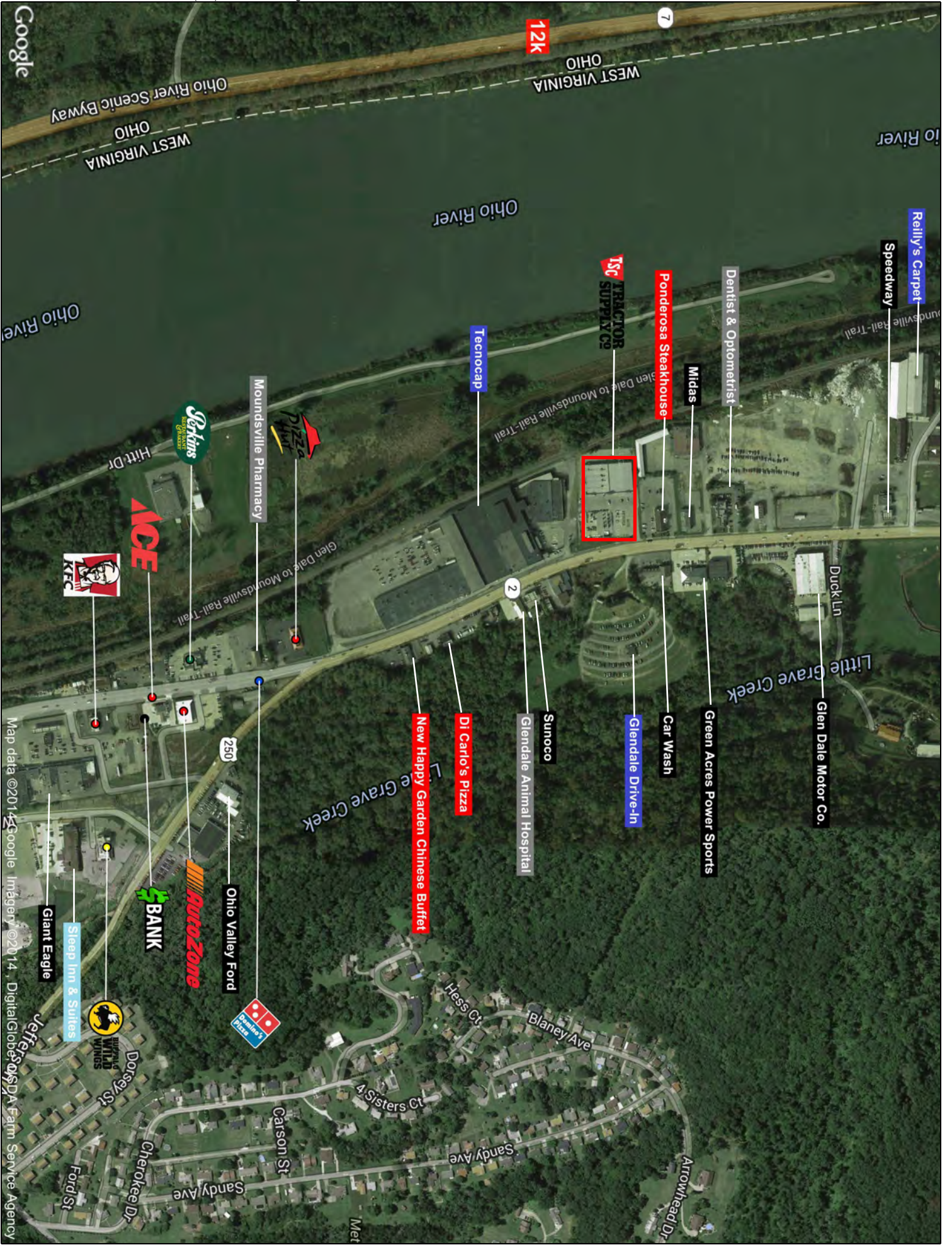
*Can be reduced for smaller space per needs

NNN: Base rent plus prorata share of Real Estate Taxes, Insurance, and Common Area expenses, including but not limited to snow removal, lawn care, and parking lot maintenance. Tenant pays separately metered utilities for gas, electric, water, sewer, & trash removal.

CALL 330-729-1010 FOR MORE INFORMATION

www.coccadevelopment.com

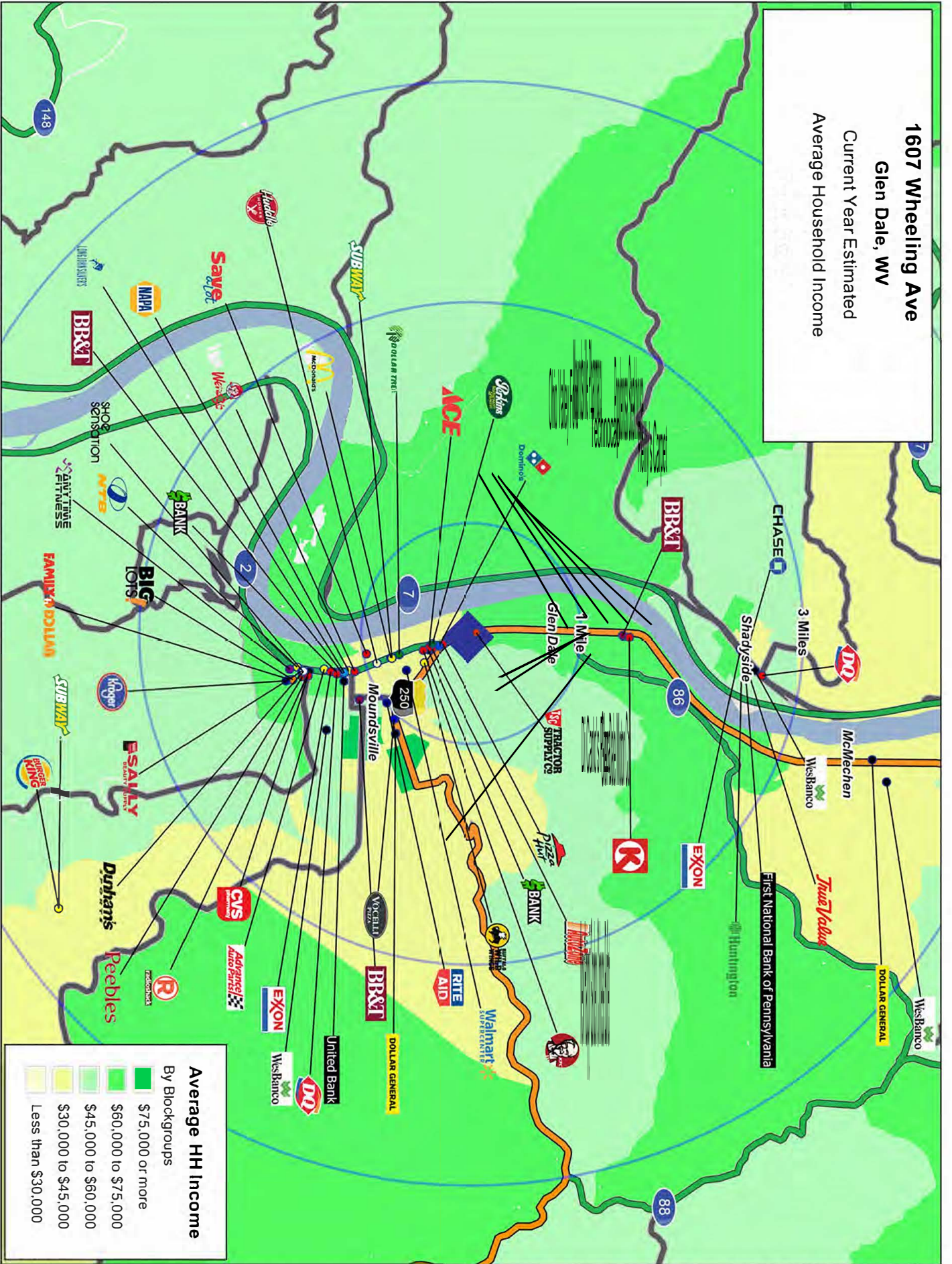




This map was produced using data from private and government sources deemed to be reliable. The information herein is provided without representation or warranty.

Map data ©2014 Google Imagery ©2014 DigitalGlobe, PA Farm Service Agency

1607 Wheeling Ave
Glen Dale, WV
 Current Year Estimated
 Average Household Income



This map was produced using data from private and government sources deemed to be reliable. The information herein is provided without representation or warranty.

1607 Wheeling Avenue

Glen Dale, WV 26036



The site is ideally located on Wheeling Avenue, 10 miles south of I-470, 12 miles south of I-70, and 53.4 miles southwest of Pittsburgh.

Glen Dale is located near the Ohio border along the Ohio River.

The average daily traffic count on Wheeling Avenue in front of the center is approximately

21,000.

The area was named after the Glen Dale Farm, which was built in the 1850s and is now called the Cockayne Farmstead. At one point, it was internationally recognized as a producer of merino wool and now features a living museum with furnishings and memorabilia from the 19th and 20th centuries.



COCCA DEVELOPMENT, LTD

1607 Wheeling Avenue Glen Dale, WV 26036

AT A GLANCE

- ◆ Located in the 'Northern Panhandle' of West Virginia in Marshall County along the Ohio River, Glen Dale is a class-four city in the state of West Virginia
- ◆ Moundsville borders the city to the south and McMechen to the north. The city is 12 miles south of Wheeling, WV and 160 miles from the State Capital of Charleston.
- ◆ Home to many famous people including major league baseball player George Brett who was born in the city; country singer Lionel Cartwright was raised in the city as was country music singer and Grand Ole Opry member Brad Paisley
- ◆ 1,877 people per square mile, with median age of 50 years

GRAPHIC PROFILE

2000-2010 Census, 2014 Estimates with 2019 Projections

Calculated using Proportional Block Groups

Lat/Lon: 39.9353/-80.7540

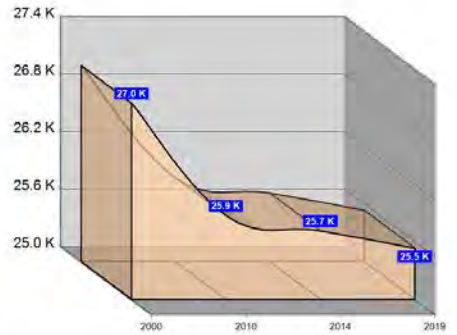
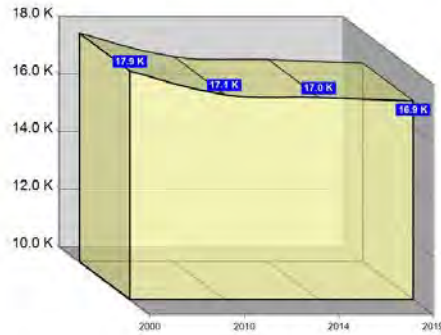
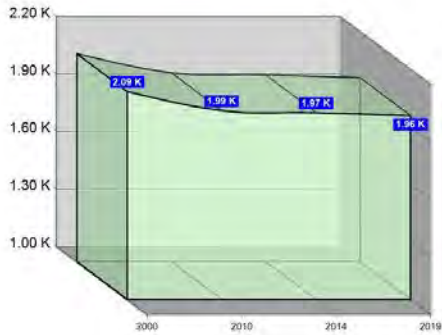
RGRAP3

1607 Wheeling Ave

Glen Dale, WV

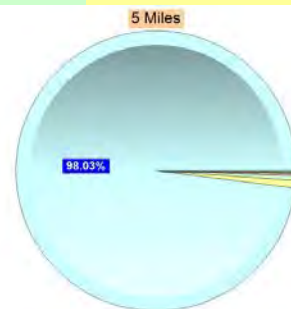
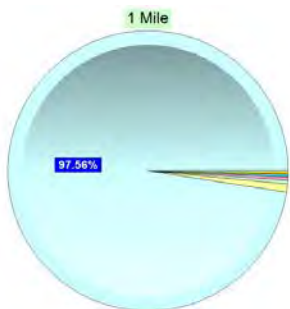
Population

	1 Mile	3 Miles	5 Miles
Estimated Population (2014)	1,975	17,025	25,716
Projected Population (2019)	1,959	16,904	25,535
Census Population (2010)	1,985	17,129	25,876
Census Population (2000)	2,085	17,949	27,049
Projected Annual Growth (2014-2019)	-16 -0.2%	-121 -0.1%	-181 -0.1%
Historical Annual Growth (2010-2014)	-11 -1.3%	-105 -1.2%	-160 -1.1%
Historical Annual Growth (2000-2010)	-100 -0.5%	-820 -0.5%	-1,173 -0.4%
Estimated Population Density (2014)	629 <i>psm</i>	602 <i>psm</i>	328 <i>psm</i>
Trade Area Size	3.1 <i>sq mi</i>	28.3 <i>sq mi</i>	78.5 <i>sq mi</i>



Race and Ethnicity (2014)

	1 Mile	3 Miles	5 Miles
Not Hispanic or Latino Population	1,942 98.4%	16,845 98.9%	25,471 99.0%
White	1,905 98.1%	16,589 98.5%	25,033 98.3%
Black or African American	8 0.4%	65 0.4%	135 0.5%
American Indian or Alaska Native	7 0.4%	24 0.1%	33 0.1%
Asian	7 0.4%	43 0.3%	64 0.3%
Hawaiian or Pacific Islander	- -	3 -	4 -
Other Race	- -	4 -	6 -
Two or More Races	15 0.8%	116 0.7%	195 0.8%
Hispanic or Latino Population	32 1.6%	179 1.1%	245 1.0%
White	21 65.6%	130 72.4%	175 71.6%
Black or African American	1 1.7%	1 0.6%	3 1.4%
American Indian or Alaska Native	- -	2 1.3%	5 2.0%
Asian	- -	- 0.2%	2 0.7%
Hispanic Hawaiian or Pacific Islander	- -	- -	- -
Other Race	7 21.9%	28 15.7%	33 13.6%
Two or More Races	3 10.8%	18 9.8%	26 10.8%



White Black or African American American Indian or Alaska Native Asian Hawaiian or Pacific Islander Other Race 2+ Races

This report was produced using data from private and government sources deemed to be reliable. The information herein is provided without representation or warranty.

GRAPHIC PROFILE

2000-2010 Census, 2014 Estimates with 2019 Projections

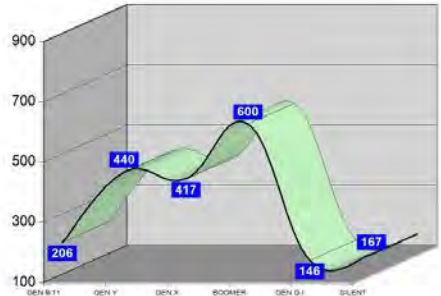
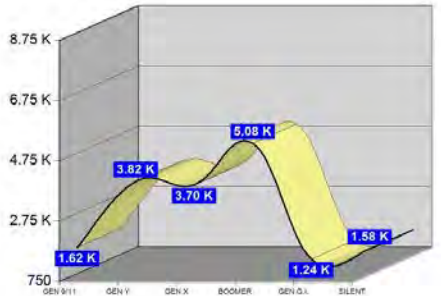
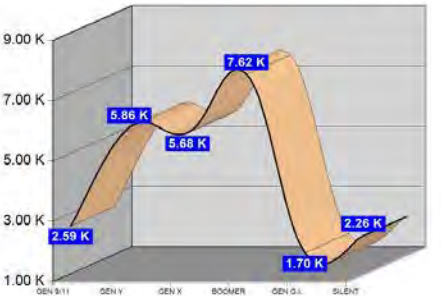
Calculated using Proportional Block Groups

Lat/Lon: 39.9353/-80.7540

RGRAP3

1607 Wheeling Ave
Glen Dale, WV

	1 Mile	3 Miles	5 Miles
Age Distribution (2014)			
Age Under 5 Years	104 5.3%	795 4.7%	1,287 5.0%
Age 5 to 9 Years	102 5.2%	825 4.8%	1,305 5.1%
Age 10 to 14 Years	106 5.3%	930 5.5%	1,424 5.5%
Age 15 to 19 Years	108 5.5%	949 5.6%	1,462 5.7%
Age 20 to 24 Years	103 5.2%	926 5.4%	1,440 5.6%
Age 25 to 29 Years	99 5.0%	893 5.2%	1,353 5.3%
Age 30 to 34 Years	107 5.4%	863 5.1%	1,310 5.1%
Age 35 to 39 Years	99 5.0%	897 5.3%	1,399 5.4%
Age 40 to 44 Years	111 5.6%	990 5.8%	1,515 5.9%
Age 45 to 49 Years	123 6.2%	1,067 6.3%	1,640 6.4%
Age 50 to 54 Years	154 7.8%	1,280 7.5%	1,928 7.5%
Age 55 to 59 Years	159 8.1%	1,391 8.2%	2,132 8.3%
Age 60 to 64 Years	161 8.1%	1,364 8.0%	2,020 7.9%
Age 65 to 69 Years	126 6.4%	1,042 6.1%	1,543 6.0%
Age 70 to 74 Years	93 4.7%	873 5.1%	1,263 4.9%
Age 75 to 79 Years	73 3.7%	703 4.1%	999 3.9%
Age 80 to 84 Years	65 3.3%	579 3.4%	800 3.1%
Age 85 Years or Over	80 4.1%	656 3.9%	898 3.5%
Median Age	45.7	46.0	45.0
Generation (2014)			
Generation 9/11 Millennials (Age Under 10 Years)	206 10.4%	1,620 9.5%	2,592 10.1%
Gen Y to Echo Boomers (Age 10 to 29 Years)	417 21.1%	3,697 21.7%	5,679 22.1%
Gen Xers (Age 30 to 49 Years)	440 22.3%	3,818 22.4%	5,863 22.8%
Baby Boomers (Age 50 to 69 Years)	600 30.4%	5,077 29.8%	7,622 29.6%
Silent Generation (Age 70 to 79 Years)	167 8.4%	1,576 9.3%	2,262 8.8%
G.I. Generation (Age 80 Years or Over)	146 7.4%	1,236 7.3%	1,698 6.6%

This report was produced using data from private and government sources deemed to be reliable. The information herein is provided without representation or warranty.

GRAPHIC PROFILE

2000-2010 Census, 2014 Estimates with 2019 Projections

Calculated using Proportional Block Groups

Lat/Lon: 39.9353/-80.7540

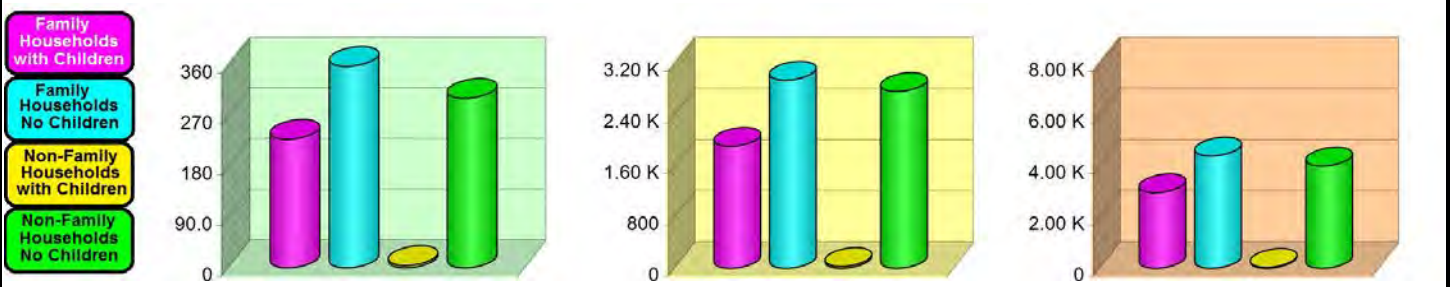
RGRAP3

1607 Wheeling Ave Glen Dale, WV

1 Mile 3 Miles 5 Miles

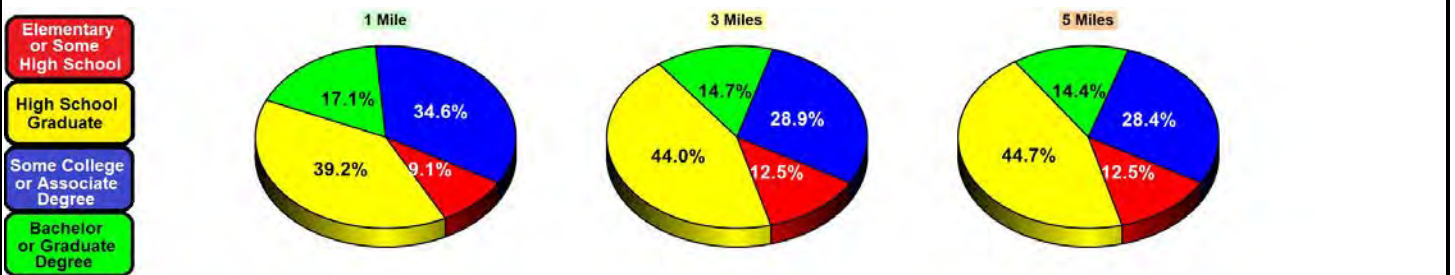
Household Type (2014)

Total Households	892	7,652	11,395
Family Households	587 40.1%	4,854 38.5%	7,355 38.6%
Family Households with Children	229 39.0%	1,911 39.4%	2,962 40.3%
Family Households No Children	358 61.0%	2,944 60.6%	4,393 59.7%
Non-Family Households	305 40.1%	2,797 38.5%	4,040 38.6%
Non-Family Households with Children	4 1.3%	31 1.1%	41 1.0%
Non-Family Households No Children	301 98.7%	2,767 98.9%	4,000 99.0%



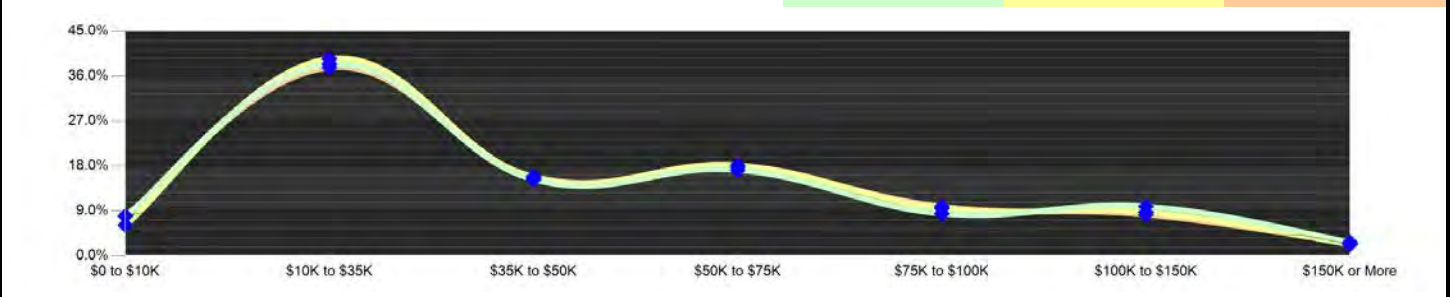
Education Attainment (2014)

Elementary or Some High School	131 9.1%	1,535 12.5%	2,302 12.5%
High School Graduate	565 39.2%	5,412 44.0%	8,219 44.7%
Some College or Associate Degree	499 34.6%	3,554 28.9%	5,226 28.4%
Bachelor or Graduate Degree	247 17.1%	1,805 14.7%	2,660 14.4%



Household Income (2014)

Estimated Average Household Income	\$49,888	\$53,989	\$50,766
Estimated Median Household Income	\$39,584	\$35,571	\$35,895
HH Income Under \$10,000	71 8.0%	469 6.1%	914 8.0%
HH Income \$10,000 to \$34,999	343 38.5%	3,021 39.5%	4,300 37.7%
HH Income \$35,000 to \$49,999	137 15.3%	1,200 15.7%	1,807 15.9%
HH Income \$50,000 to \$74,999	153 17.2%	1,388 18.1%	2,028 17.8%
HH Income \$75,000 to \$99,999	88 9.9%	670 8.8%	940 8.2%
HH Income \$100,000 to \$149,999	88 9.9%	670 8.8%	940 8.2%
HH Income \$150,000 or More	24 2.7%	175 2.3%	281 2.5%



This report was produced using data from private and government sources deemed to be reliable. The information herein is provided without representation or warranty.

EXPANDED PROFILE

2000-2010 Census, 2014 Estimates with 2019 Projections

Calculated using Proportional Block Groups

Lat/Lon: 39.9353/-80.7540

RF5

1607 Wheeling Ave Glen Dale, WV	1 Mile	3 Miles	5 Miles
Population			
Estimated Population (2014)	1,975	17,025	25,716
Projected Population (2019)	1,959	16,904	25,535
Census Population (2010)	1,985	17,129	25,876
Census Population (2000)	2,085	17,949	27,049
Projected Annual Growth (2014 to 2019)	-16 -0.2%	-121 -0.1%	-181 -0.1%
Historical Annual Growth (2010 to 2014)	-11 -0.1%	-105 -0.2%	-160 -0.2%
Historical Annual Growth (2000 to 2010)	-100 -0.5%	-820 -0.5%	-1,173 -0.4%
Estimated Population Density (2014)	629 <i>psm</i>	602 <i>psm</i>	328 <i>psm</i>
Trade Area Size	3.14 <i>sq mi</i>	28.26 <i>sq mi</i>	78.49 <i>sq mi</i>
Households			
Estimated Households (2014)	892	7,652	11,395
Projected Households (2019)	908	7,785	11,593
Census Households (2010)	879	7,548	11,241
Census Households (2000)	904	7,693	11,377
Estimated Households with Children (2014)	233 26.1%	1,941 25.4%	3,002 26.3%
Estimated Average Household Size (2014)	2.20	2.18	2.22
Average Household Income			
Estimated Average Household Income (2014)	\$49,168	\$58,262	\$54,924
Projected Average Household Income (2019)	\$53,425	\$63,281	\$59,584
Estimated Average Family Income (2014)	\$57,618	\$70,190	\$65,878
Median Household Income			
Estimated Median Household Income (2014)	\$43,157	\$41,256	\$40,777
Projected Median Household Income (2019)	\$46,327	\$44,362	\$43,897
Estimated Median Family Income (2014)	\$51,850	\$52,272	\$52,021
Per Capita Income			
Estimated Per Capita Income (2014)	\$22,251	\$26,324	\$24,474
Projected Per Capita Income (2019)	\$24,799	\$29,299	\$27,204
Estimated Per Capita income 5 Year Growth	\$2,549 11.5%	\$2,974 11.3%	\$2,730 11.2%
Estimated Average Household Net Worth (2014)	\$326,735	\$290,451	\$290,422
Daytime Demos (2014)			
Total Businesses	263	802	1,043
Total Employees	2,679	7,966	9,628
Company Headquarter Businesses	1 0.3%	2 0.2%	3 0.3%
Company Headquarter Employees	8 0.3%	210 2.6%	229 2.4%
Employee Population per Business	10.2	9.9	9.2
Residential Population per Business	7.5	21.2	24.7

This report was produced using data from private and government sources deemed to be reliable. The information herein is provided without representation or warranty.

EXPANDED PROFILE

2000-2010 Census, 2014 Estimates with 2019 Projections

Calculated using Proportional Block Groups

Lat/Lon: 39.9353/-80.7540

RF5

1607 Wheeling Ave

Glen Dale, WV

Race & Ethnicity

	1 Mile		3 Miles		5 Miles	
White (2014)	1,926	97.6%	16,719	98.2%	25,209	98.0%
Black or African American (2014)	9	0.4%	66	0.4%	139	0.5%
American Indian or Alaska Native (2014)	7	0.4%	26	0.2%	38	0.1%
Asian (2014)	7	0.4%	43	0.3%	66	0.3%
Hawaiian or Pacific Islander (2014)	-	-	3	-	4	-
Other Race (2014)	7	0.4%	32	0.2%	39	0.2%
Two or More Races (2014)	18	0.9%	134	0.8%	222	0.9%
Not Hispanic or Latino Population (2014)	1,942	98.4%	16,845	98.9%	25,471	99.0%
Hispanic or Latino Population (2014)	32	1.6%	179	1.1%	245	1.0%
Not Hispanic or Latino Population (2019)	1,923	98.2%	16,699	98.8%	25,256	98.9%
Hispanic or Latino Population (2019)	36	1.8%	205	1.2%	279	1.1%
Not Hispanic or Latino Population (2010)	1,957	98.6%	16,973	99.1%	25,663	99.2%
Hispanic or Latino Population (2010)	28	1.4%	156	0.9%	213	0.8%
Not Hispanic or Latino Population (2000)	2,065	99.0%	17,812	99.2%	26,870	99.3%
Hispanic or Latino Population (2000)	20	1.0%	137	0.8%	179	0.7%
Projected Hispanic Annual Growth (2014 to 2019)	3	2.1%	26	2.9%	35	2.9%
Historic Hispanic Annual Growth (2000 to 2014)	12	4.2%	42	2.2%	66	2.6%

Age Distribution (2014)

Age Under 5	104	5.3%	795	4.7%	1,287	5.0%
Age 5 to 9 Years	102	5.2%	825	4.8%	1,305	5.1%
Age 10 to 14 Years	106	5.3%	930	5.5%	1,424	5.5%
Age 15 to 19 Years	108	5.5%	949	5.6%	1,462	5.7%
Age 20 to 24 Years	103	5.2%	926	5.4%	1,440	5.6%
Age 25 to 29 Years	99	5.0%	893	5.2%	1,353	5.3%
Age 30 to 34 Years	107	5.4%	863	5.1%	1,310	5.1%
Age 35 to 39 Years	99	5.0%	897	5.3%	1,399	5.4%
Age 40 to 44 Years	111	5.6%	990	5.8%	1,515	5.9%
Age 45 to 49 Years	123	6.2%	1,067	6.3%	1,640	6.4%
Age 50 to 54 Years	154	7.8%	1,280	7.5%	1,928	7.5%
Age 55 to 59 Years	159	8.1%	1,391	8.2%	2,132	8.3%
Age 60 to 64 Years	161	8.1%	1,364	8.0%	2,020	7.9%
Age 65 to 74 Years	219	11.1%	1,915	11.2%	2,805	10.9%
Age 75 to 84 Years	139	7.0%	1,282	7.5%	1,799	7.0%
Age 85 Years or Over	80	4.1%	656	3.9%	898	3.5%
Median Age	45.7		46.0		45.0	

Gender Age Distribution (2014)

Female Population	1,038	52.6%	9,034	53.1%	13,482	52.4%
Age 0 to 19 Years	218	21.0%	1,761	19.5%	2,715	20.1%
Age 20 to 64 Years	571	55.0%	4,985	55.2%	7,545	56.0%
Age 65 Years or Over	250	24.1%	2,288	25.3%	3,221	23.9%
Female Median Age	46.6		47.9		46.8	
Male Population	937	47.4%	7,991	46.9%	12,234	47.6%
Age 0 to 19 Years	202	21.6%	1,738	21.8%	2,763	22.6%
Age 20 to 64 Years	546	58.3%	4,687	58.7%	7,190	58.8%
Age 65 Years or Over	189	20.1%	1,566	19.6%	2,281	18.6%
Male Median Age	44.8		43.9		43.1	

This report was produced using data from private and government sources deemed to be reliable. The information herein is provided without representation or warranty.

EXPANDED PROFILE

2000-2010 Census, 2014 Estimates with 2019 Projections

Calculated using Proportional Block Groups

Lat/Lon: 39.9353/-80.7540

RF5

1607 Wheeling Ave Glen Dale, WV	1 Mile		3 Miles		5 Miles	
Household Income Distribution (2014)						
HH Income \$200,000 or More	8	0.9%	86	1.1%	112	1.0%
HH Income \$150,000 to \$199,999	16	1.8%	89	1.2%	169	1.5%
HH Income \$100,000 to \$149,999	88	9.9%	670	8.8%	940	8.2%
HH Income \$75,000 to \$99,999	76	8.5%	728	9.5%	1,125	9.9%
HH Income \$50,000 to \$74,999	153	17.2%	1,388	18.1%	2,028	17.8%
HH Income \$35,000 to \$49,999	137	15.3%	1,200	15.7%	1,807	15.9%
HH Income \$25,000 to \$34,999	143	16.0%	1,207	15.8%	1,733	15.2%
HH Income \$15,000 to \$24,999	144	16.2%	1,343	17.5%	1,823	16.0%
HH Income Under \$15,000	127	14.2%	940	12.3%	1,659	14.6%
HH Income \$35,000 or More	478	53.6%	4,161	54.4%	6,180	54.2%
HH Income \$75,000 or More	188	21.1%	1,573	20.6%	2,346	20.6%
Housing (2014)						
Total Housing Units	975		8,245		12,363	
Housing Units Occupied	892	91.5%	7,652	92.8%	11,395	92.2%
Housing Units Owner-Occupied	614	68.8%	5,546	72.5%	8,310	72.9%
Housing Units, Renter-Occupied	278	31.2%	2,106	27.5%	3,085	27.1%
Housing Units, Vacant	83	8.5%	593	7.2%	968	7.8%
Marital Status (2014)						
Never Married	408	24.5%	3,186	22.0%	4,936	22.7%
Currently Married	777	46.7%	7,341	50.7%	11,143	51.3%
Separated	46	2.8%	440	3.0%	638	2.9%
Widowed	213	12.8%	1,705	11.8%	2,265	10.4%
Divorced	218	13.1%	1,803	12.5%	2,719	12.5%
Household Type (2014)						
Population Family	1,571	79.6%	13,129	77.1%	20,153	78.4%
Population Non-Family	393	19.9%	3,589	21.1%	5,155	20.0%
Population Group Quarters	10	0.5%	306	1.8%	409	1.6%
Family Households	587	65.8%	4,854	63.4%	7,355	64.5%
Non-Family Households	305	34.2%	2,797	36.6%	4,040	35.5%
Married Couple with Children	126	16.3%	1,167	15.9%	1,815	16.3%
Average Family Household Size	2.7		2.7		2.7	
Household Size (2014)						
1 Person Households	266	29.8%	2,428	31.7%	3,518	30.9%
2 Person Households	346	38.7%	2,854	37.3%	4,197	36.8%
3 Person Households	140	15.7%	1,152	15.0%	1,772	15.5%
4 Person Households	92	10.3%	815	10.7%	1,250	11.0%
5 Person Households	37	4.1%	280	3.7%	461	4.0%
6 or More Person Households	12	1.4%	123	1.6%	198	1.7%
Household Vehicles (2014)						
Households with 0 Vehicles Available	59	6.6%	666	8.7%	955	8.4%
Households with 1 Vehicles Available	406	45.5%	3,328	43.5%	4,755	41.7%
Households with 2 or More Vehicles Available	428	48.0%	3,658	47.8%	5,685	49.9%
Total Vehicles Available	1,398		11,924		18,137	
Average Vehicles Per Household	1.6		1.6		1.6	

This report was produced using data from private and government sources deemed to be reliable. The information herein is provided without representation or warranty.

EXPANDED PROFILE

2000-2010 Census, 2014 Estimates with 2019 Projections

Calculated using Proportional Block Groups

Lat/Lon: 39.9353/-80.7540

RF5

1607 Wheeling Ave Glen Dale, WV	1 Mile	3 Miles	5 Miles
Labor Force (2014)			
Estimated Labor Population Age 16 Years or Over	1,632	13,979	20,998
Estimated Civilian Employed	815 49.9%	6,900 49.4%	10,434 49.7%
Estimated Civilian Unemployed	50 3.1%	487 3.5%	803 3.8%
Estimated in Armed Forces	8 0.5%	28 0.2%	30 0.1%
Estimated Not in Labor Force	759 46.5%	6,564 47.0%	9,730 46.3%
Unemployment Rate	3.1%	3.5%	3.8%
Occupation (2010)			
Occupation: Population Age 16 Years or Over	833	6,774	10,238
Management, Business, Financial Operations	100 12.0%	611 9.0%	878 8.6%
Professional, Related	182 21.8%	1,422 21.0%	2,055 20.1%
Service	164 19.7%	1,497 22.1%	2,254 22.0%
Sales, Office	230 27.6%	1,733 25.6%	2,607 25.5%
Farming, Fishing, Forestry	1 0.1%	5 0.1%	6 0.1%
Construct, Extraction, Maintenance	53 6.3%	690 10.2%	1,128 11.0%
Production, Transport Material Moving	104 12.5%	816 12.0%	1,311 12.8%
White Collar Workers	512 61.4%	3,766 55.6%	5,540 54.1%
Blue Collar Workers	322 38.6%	3,008 44.4%	4,698 45.9%
Consumer Expenditure (2014)			
Total Household Expenditure	\$38.5 M	\$366 M	\$526 M
Total Non-Retail Expenditure	\$22.0 M 57.2%	\$209 M 57.1%	\$300 M 57.1%
Total Retail Expenditure	\$16.5 M 42.8%	\$157 M 42.9%	\$225 M 42.9%
Apparel	\$1.83 M 4.7%	\$17.3 M 4.7%	\$24.9 M 4.7%
Contributions	\$1.34 M 3.5%	\$12.7 M 3.5%	\$18.3 M 3.5%
Education	\$851 K 2.2%	\$7.91 M 2.2%	\$11.4 M 2.2%
Entertainment	\$2.13 M 5.5%	\$20.3 M 5.5%	\$29.1 M 5.5%
Food and Beverages	\$6.02 M 15.6%	\$57.3 M 15.7%	\$82.3 M 15.7%
Furnishings and Equipment	\$1.63 M 4.2%	\$15.5 M 4.2%	\$22.2 M 4.2%
Gifts	\$980 K 2.5%	\$9.26 M 2.5%	\$13.3 M 2.5%
Health Care	\$2.48 M 6.4%	\$23.8 M 6.5%	\$34.1 M 6.5%
Household Operations	\$1.31 M 3.4%	\$12.4 M 3.4%	\$17.8 M 3.4%
Miscellaneous Expenses	\$661 K 1.7%	\$6.32 M 1.7%	\$9.04 M 1.7%
Personal Care	\$561 K 1.5%	\$5.33 M 1.5%	\$7.66 M 1.5%
Personal Insurance	\$373 K 1.0%	\$3.52 M 1.0%	\$5.06 M 1.0%
Reading	\$127 K 0.3%	\$1.21 M 0.3%	\$1.73 M 0.3%
Shelter	\$7.40 M 19.2%	\$70.3 M 19.2%	\$101 M 19.2%
Tobacco	\$274 K 0.7%	\$2.64 M 0.7%	\$3.79 M 0.7%
Transportation	\$7.75 M 20.1%	\$73.7 M 20.1%	\$106 M 20.1%
Utilities	\$2.79 M 7.3%	\$26.7 M 7.3%	\$38.3 M 7.3%
Educational Attainment (2014)			
Adult Population Age 25 Years or Over	1,442	12,307	18,406
Elementary (Grade Level 0 to 8)	8 0.6%	529 4.3%	708 3.8%
Some High School (Grade Level 9 to 11)	123 8.5%	1,006 8.2%	1,595 8.7%
High School Graduate	565 39.2%	5,412 44.0%	8,219 44.7%
Some College	356 24.7%	2,606 21.2%	3,839 20.9%
Associate Degree Only	142 9.9%	948 7.7%	1,387 7.5%
Bachelor Degree Only	126 8.7%	1,264 10.3%	1,847 10.0%
Graduate Degree	121 8.4%	541 4.4%	813 4.4%

This report was produced using data from private and government sources deemed to be reliable. The information herein is provided without representation or warranty.

EXPANDED PROFILE

2000-2010 Census, 2014 Estimates with 2019 Projections

Calculated using Proportional Block Groups

Lat/Lon: 39.9353/-80.7540

RF5

1607 Wheeling Ave Glen Dale, WV	1 Mile		3 Miles		5 Miles	
Units In Structure (2010)						
1 Detached Unit	701	79.7%	5,814	77.0%	8,563	76.2%
1 Attached Unit	27	3.0%	155	2.1%	220	2.0%
2 to 4 Units	59	6.7%	493	6.5%	779	6.9%
5 to 9 Units	16	1.8%	117	1.6%	289	2.6%
10 to 19 Units	11	1.3%	83	1.1%	121	1.1%
20 to 49 Units	1	0.2%	108	1.4%	144	1.3%
50 or More Units	2	0.2%	112	1.5%	149	1.3%
Mobile Home or Trailer	61	6.9%	664	8.8%	974	8.7%
Other Structure	1	0.1%	2	-	3	-
Homes Built By Year (2010)						
Homes Built 2005 or later	13	1.4%	158	2.1%	253	2.2%
Homes Built 2000 to 2004	27	3.1%	226	3.0%	360	3.2%
Homes Built 1990 to 1999	92	10.5%	682	9.0%	1,025	9.1%
Homes Built 1980 to 1989	82	9.4%	654	8.7%	1,008	9.0%
Homes Built 1970 to 1979	130	14.7%	1,023	13.6%	1,699	15.1%
Homes Built 1960 to 1969	78	8.9%	846	11.2%	1,256	11.2%
Homes Built 1950 to 1959	158	18.0%	1,180	15.6%	1,693	15.1%
Homes Built Before 1949	299	34.0%	2,780	36.8%	3,948	35.1%
Home Values (2010)						
Home Values \$1,000,000 or More	1	0.1%	26	0.5%	26	0.3%
Home Values \$500,000 to \$999,999	7	1.1%	17	0.3%	21	0.3%
Home Values \$400,000 to \$499,999	4	0.6%	25	0.5%	41	0.5%
Home Values \$300,000 to \$399,999	10	1.6%	74	1.4%	120	1.5%
Home Values \$200,000 to \$299,999	64	10.7%	376	6.9%	613	7.5%
Home Values \$150,000 to \$199,999	77	12.8%	462	8.5%	738	9.0%
Home Values \$100,000 to \$149,999	110	18.3%	893	16.4%	1,361	16.7%
Home Values \$70,000 to \$99,999	152	25.3%	1,530	28.1%	2,187	26.8%
Home Values \$50,000 to \$69,999	63	10.5%	963	17.7%	1,384	16.9%
Home Values \$25,000 to \$49,999	40	6.6%	550	10.1%	934	11.4%
Home Values Under \$25,000	74	12.4%	534	9.8%	744	9.1%
Owner-Occupied Median Home Value	\$100,314		\$84,850		\$86,113	
Renter-Occupied Median Rent	\$361		\$381		\$364	
Transportation To Work (2010)						
Drive to Work Alone	666	82.8%	5,750	86.3%	8,656	86.2%
Drive to Work in Carpool	66	8.2%	502	7.5%	822	8.2%
Travel to Work by Public Transportation	-	-	3	-	8	0.1%
Drive to Work on Motorcycle	-	-	1	-	1	-
Walk or Bicycle to Work	29	3.6%	178	2.7%	223	2.2%
Other Means	22	2.7%	65	1.0%	101	1.0%
Work at Home	21	2.6%	167	2.5%	234	2.3%
Travel Time (2010)						
Travel to Work in 14 Minutes or Less	357	45.6%	2,295	35.3%	3,317	33.8%
Travel to Work in 15 to 29 Minutes	288	36.8%	2,606	40.1%	3,927	40.0%
Travel to Work in 30 to 59 Minutes	109	13.9%	1,272	19.6%	2,037	20.8%
Travel to Work in 60 Minutes or More	28	3.6%	326	5.0%	530	5.4%
Average Minutes Travel to Work	15.4		19.7		19.8	

This report was produced using data from private and government sources deemed to be reliable. The information herein is provided without representation or warranty.