

COCCA DEVELOPMENT

RETAIL SPACE FOR LEASE
28-52 MONONGAHELA AVENUE
GLASSPORT, PA 15045



- Join Dollar General, Mama Pepino's Pizza, Laundry Mat, Subway, and Tube City
- Ideal for storage or small office/dance studio in rear of building
- Located approximately 5 miles east of the Allegheny County Airport, approximately 5.5 miles east of Century III Mall, and approximately 6 miles north of PA-43

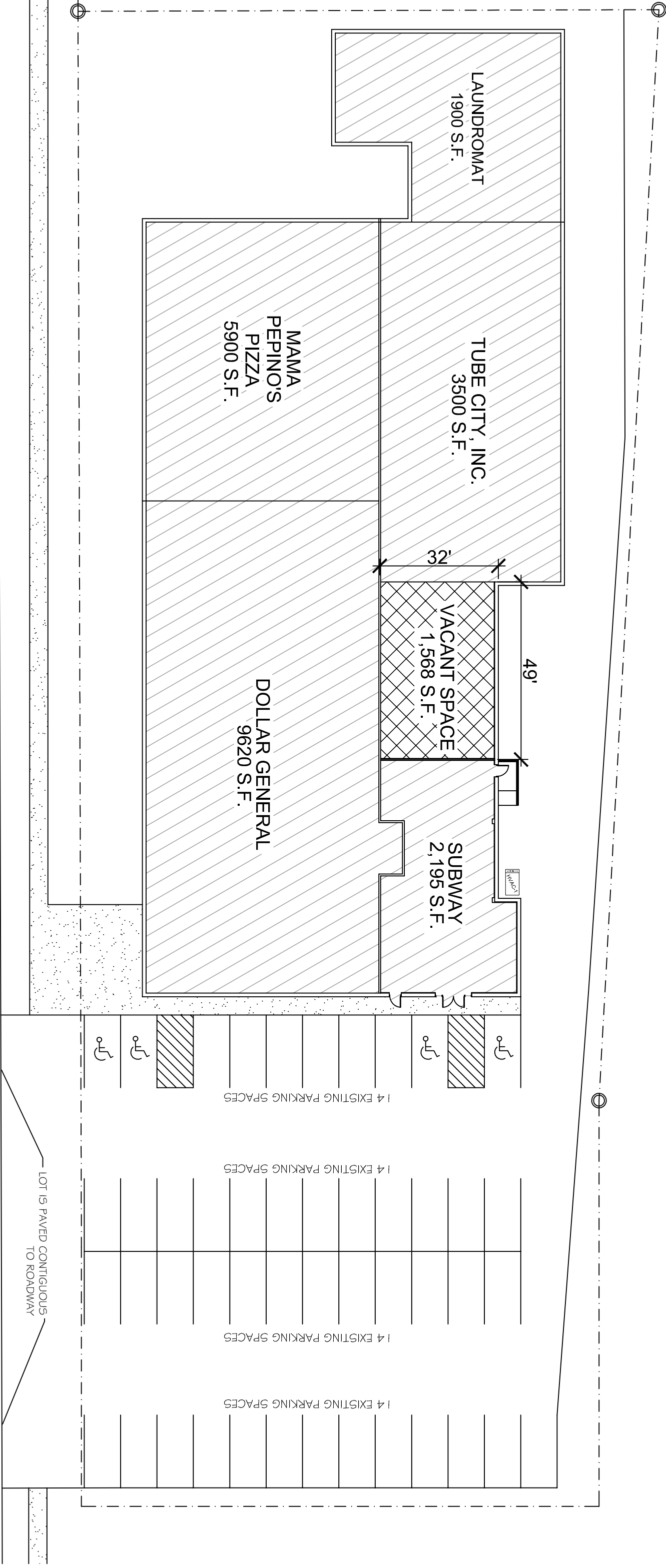
AVAILABLE AREA—\$6/square foot NNN:

Approximately 1,568 square feet

NNN: Base rent plus prorata share of Real Estate Taxes, Insurance, and Common Area expenses, including but not limited to snow removal, lawn care, and parking lot maintenance. Tenant pays separately metered utilities for gas, electric, water, sewer, & trash removal.

CALL 330-729-1010 FOR MORE INFORMATION

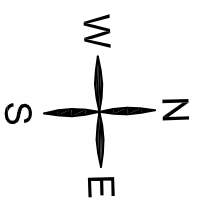
www.coccadevelopment.com

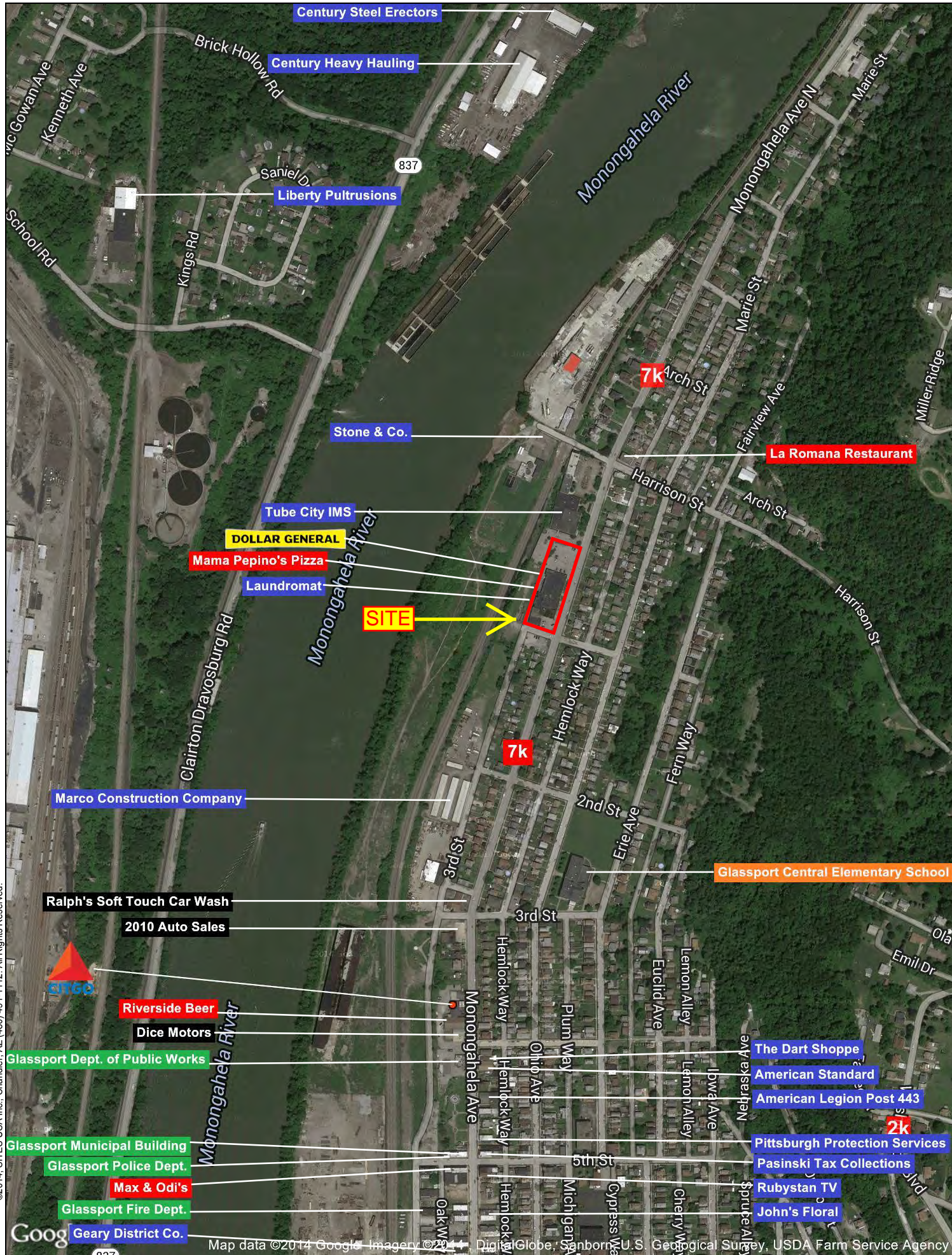


MONONGAHELA AVE.

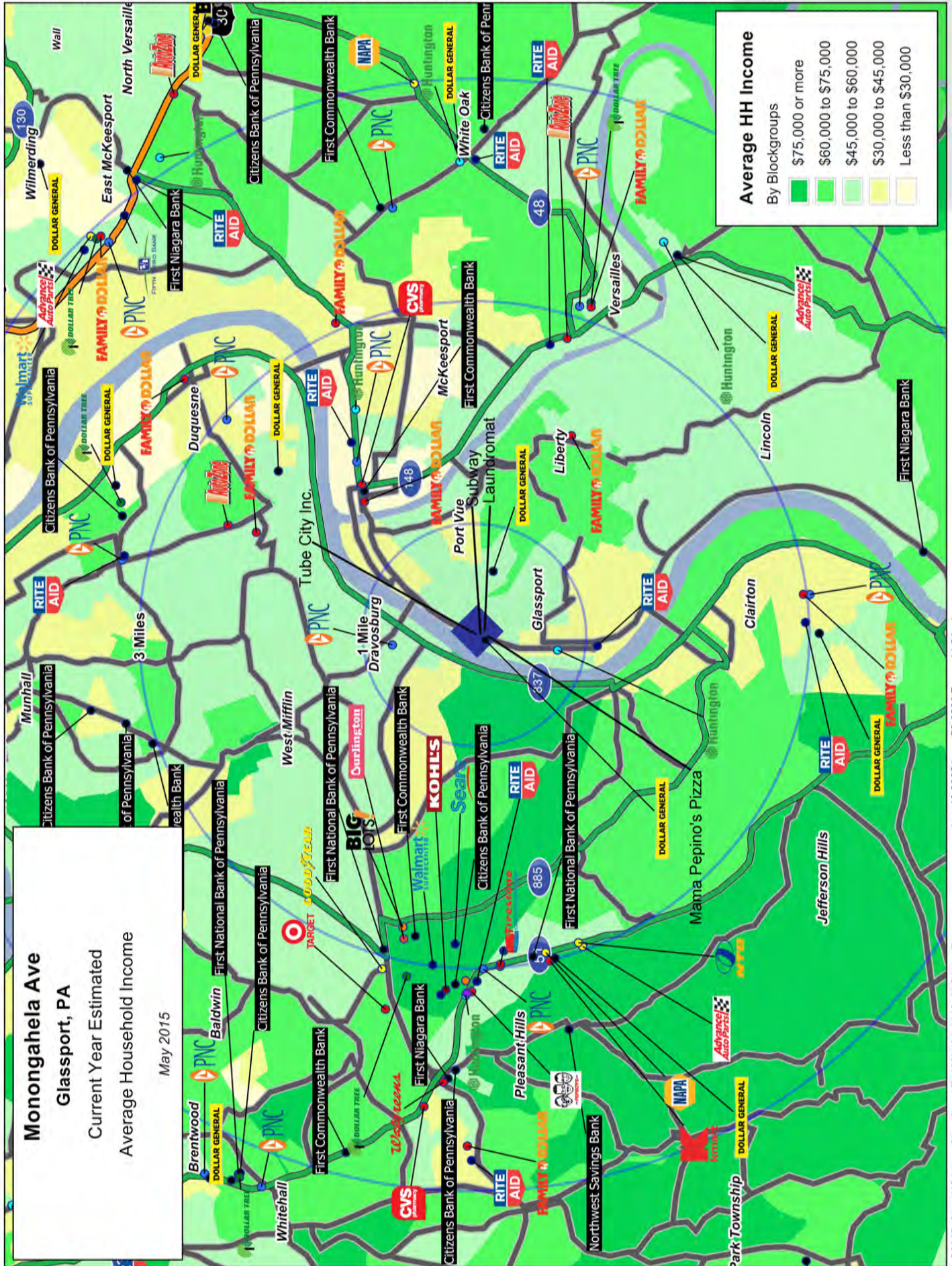
NOTE:
DIMENSIONS SHOWN FOR VACANT/AVAILABLE SPACES ARE APPROXIMATE & WOULD NEED TO BE FIELD VERIFIED PRIOR TO LEASING

UPDATED 11-20-15





This map was produced using data from private and government sources deemed to be reliable. The information herein is provided without representation or warranty.



COCCA DEVELOPMENT, LTD

28 Monongahela Avenue Glassport, PA 15045

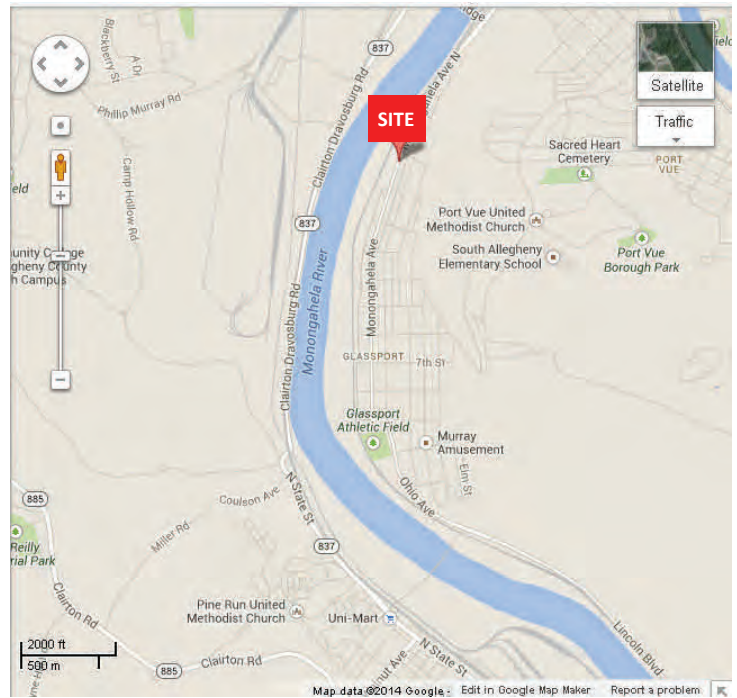
AT A GLANCE

- ◆ Glassport is located on the Monongahela River just outside the city limits of Pittsburgh, with easy access to the Downtown Pittsburgh area, as well as a short drive to the Allegheny County Airport located in West Mifflin, Pennsylvania.
- ◆ The town was built around a mill called The United States Glass Company in 1894, which came to be known as the “Glass House.” The company’s subsidiary Glassport Land Co, laid out the city’s original plot plan.
- ◆ Glassport was originally named after the Pittsburgh Glass Company, which was located near the Monongahela River on Seventh Street. The company specialized in "pressed glass," tableware, and other glass products made from molds.
- ◆ Bringing recognition to the area, former NFL player George Hays was born and raised in Glassport.

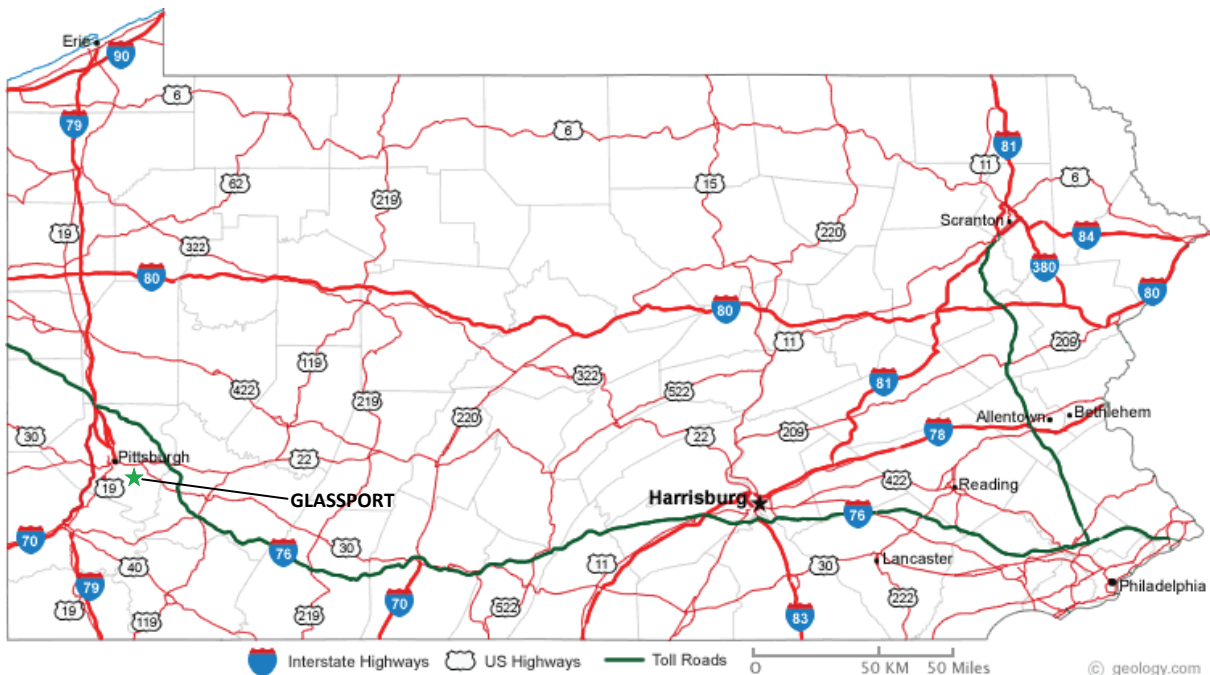
28 Monongahela Avenue Glassport, PA 15045

The site is ideally located on Monongahela Avenue, approximately six miles north of PA Route 51.

The average daily traffic count on Monongahela Ave, in front of the center, is approximately 7,000.



Glassport is located in Allegheny County, the second highest populated county in Pennsylvania (Over 1,200,000 people as of 2013). The town is situated between the Monongahela and Youghiogheny Rivers, located approximately six miles south of the city of Pittsburgh.



GRAPHIC PROFILE

2000-2010 Census, 2014 Estimates with 2019 Projections

Calculated using Proportional Block Groups

Lat/Lon: 40.3366/-79.8902

RGRAP3

Monongahela Ave

Glassport, PA

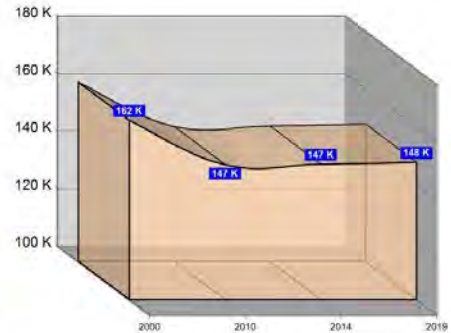
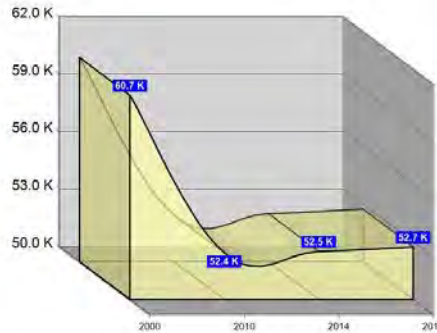
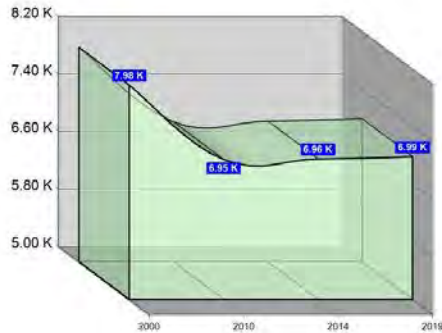
1 Mile

3 Miles

5 Miles

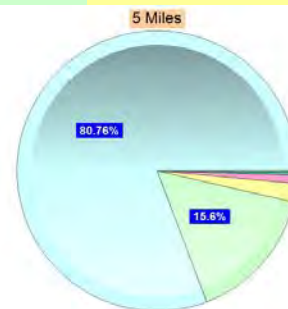
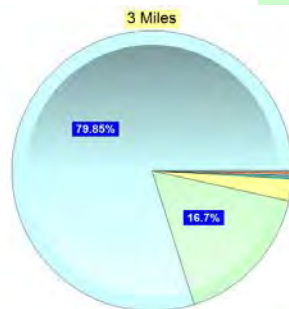
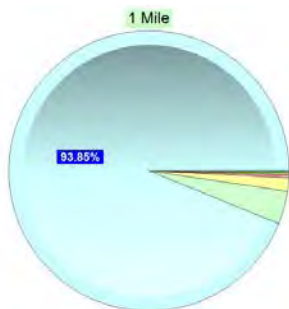
Population

Estimated Population (2014)	6,955	52,499	147,115
Projected Population (2019)	6,986	52,731	147,777
Census Population (2010)	6,946	52,425	146,906
Census Population (2000)	7,983	60,660	162,382
Projected Annual Growth (2014-2019)	31 0.1%	232 0.1%	663 0.1%
Historical Annual Growth (2010-2014)	9 -3.7%	74 -3.9%	209 -2.6%
Historical Annual Growth (2000-2010)	-1,037 -1.3%	-8,235 -1.4%	-15,476 -1.0%
Estimated Population Density (2014)	2,216 <i>psm</i>	1,858 <i>psm</i>	1,874 <i>psm</i>
Trade Area Size	3.1 <i>sq mi</i>	28.3 <i>sq mi</i>	78.5 <i>sq mi</i>



Race and Ethnicity (2014)

Not Hispanic or Latino Population	6,848 98.5%	51,593 98.3%	144,771 98.4%
White	6,447 94.1%	41,437 80.3%	117,530 81.2%
Black or African American	261 3.8%	8,621 16.7%	22,651 15.6%
American Indian or Alaska Native	17 0.2%	99 0.2%	199 0.1%
Asian	21 0.3%	173 0.3%	1,397 1.0%
Hawaiian or Pacific Islander	3 -	14 -	32 -
Other Race	7 0.1%	72 0.1%	164 0.1%
Two or More Races	92 1.3%	1,179 2.3%	2,799 1.9%
Hispanic or Latino Population	107 1.5%	907 1.7%	2,343 1.6%
White	80 75.2%	486 53.6%	1,276 54.5%
Black or African American	4 3.8%	140 15.4%	365 15.6%
American Indian or Alaska Native	- -	8 0.9%	31 1.3%
Asian	- 0.4%	1 0.1%	7 0.3%
Hispanic Hawaiian or Pacific Islander	- -	- -	3 0.1%
Other Race	7 6.6%	109 12.0%	311 13.3%
Two or More Races	15 14.0%	163 18.0%	349 14.9%



White Black or African American American Indian or Alaska Native Asian Hawaiian or Pacific Islander Other Race 2+ Races

This report was produced using data from private and government sources deemed to be reliable. The information herein is provided without representation or warranty.

GRAPHIC PROFILE

2000-2010 Census, 2014 Estimates with 2019 Projections

Calculated using Proportional Block Groups

Lat/Lon: 40.3366/-79.8902

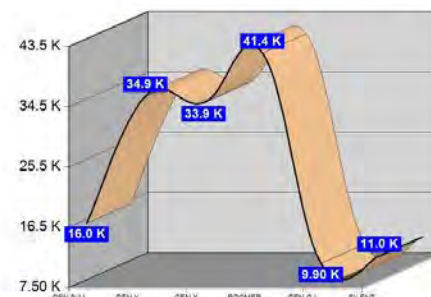
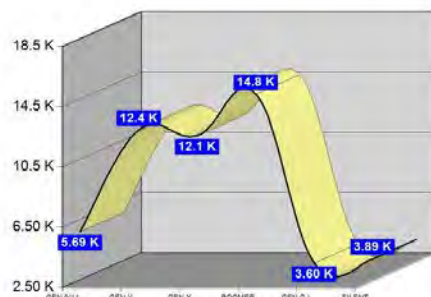
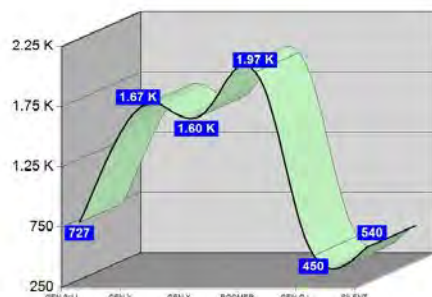
RGRAP3

Monongahela Ave Glassport, PA

	1 Mile		3 Miles		5 Miles	
Age Distribution (2014)						
Age Under 5 Years	371	5.3%	2,916	5.6%	8,149	5.5%
Age 5 to 9 Years	356	5.1%	2,771	5.3%	7,802	5.3%
Age 10 to 14 Years	352	5.1%	2,876	5.5%	8,040	5.5%
Age 15 to 19 Years	400	5.8%	3,186	6.1%	8,780	6.0%
Age 20 to 24 Years	408	5.9%	2,831	5.4%	7,988	5.4%
Age 25 to 29 Years	435	6.3%	3,167	6.0%	9,120	6.2%
Age 30 to 34 Years	441	6.3%	3,217	6.1%	9,131	6.2%
Age 35 to 39 Years	392	5.6%	2,897	5.5%	8,038	5.5%
Age 40 to 44 Years	400	5.7%	2,958	5.6%	8,274	5.6%
Age 45 to 49 Years	434	6.2%	3,371	6.4%	9,482	6.4%
Age 50 to 54 Years	532	7.7%	4,003	7.6%	11,276	7.7%
Age 55 to 59 Years	543	7.8%	4,205	8.0%	11,726	8.0%
Age 60 to 64 Years	500	7.2%	3,748	7.1%	10,351	7.0%
Age 65 to 69 Years	400	5.8%	2,868	5.5%	8,016	5.4%
Age 70 to 74 Years	304	4.4%	2,166	4.1%	6,166	4.2%
Age 75 to 79 Years	236	3.4%	1,722	3.3%	4,877	3.3%
Age 80 to 84 Years	222	3.2%	1,632	3.1%	4,455	3.0%
Age 85 Years or Over	228	3.3%	1,966	3.7%	5,440	3.7%
Median Age	42.9		42.9		42.7	

	1 Mile		3 Miles		5 Miles	
Generation (2014)						
Generation 9/11 Millennials (Age Under 10 Years)	727	10.5%	5,687	10.8%	15,951	10.8%
Gen Y to Echo Boomers (Age 10 to 29 Years)	1,596	22.9%	12,060	23.0%	33,928	23.1%
Gen Xers (Age 30 to 49 Years)	1,667	24.0%	12,442	23.7%	34,926	23.7%
Baby Boomers (Age 50 to 69 Years)	1,975	28.4%	14,824	28.2%	41,370	28.1%
Silent Generation (Age 70 to 79 Years)	540	7.8%	3,889	7.4%	11,043	7.5%
G.I. Generation (Age 80 Years or Over)	450	6.5%	3,597	6.9%	9,896	6.7%

This report was produced using data from private and government sources deemed to be reliable. The information herein is provided without representation or warranty.



GRAPHIC PROFILE

2000-2010 Census, 2014 Estimates with 2019 Projections

Calculated using Proportional Block Groups

Lat/Lon: 40.3366/-79.8902

RGRAP3

Monongahela Ave Glassport, PA

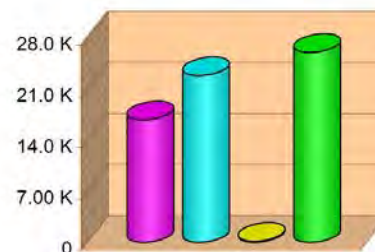
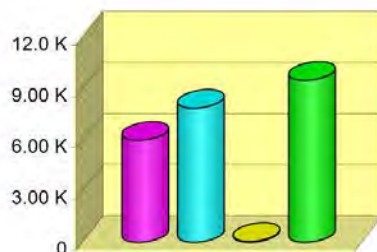
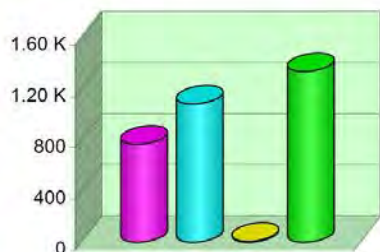
1 Mile

3 Miles

5 Miles

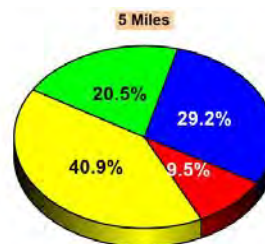
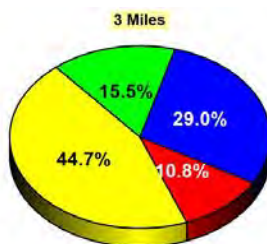
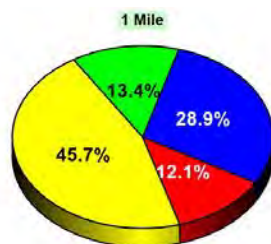
Household Type (2014)

	1 Mile	3 Miles	5 Miles
Total Households	3,190	23,397	65,716
Family Households	1,847 33.9%	13,846 33.6%	39,579 34.7%
Family Households with Children	766 41.5%	5,981 43.2%	16,762 42.4%
Family Households No Children	1,081 58.5%	7,864 56.8%	22,817 57.6%
Non-Family Households	1,342 33.9%	9,551 33.6%	26,137 34.7%
Non-Family Households with Children	8 0.6%	50 0.5%	144 0.6%
Non-Family Households No Children	1,335 99.4%	9,501 99.5%	25,993 99.4%



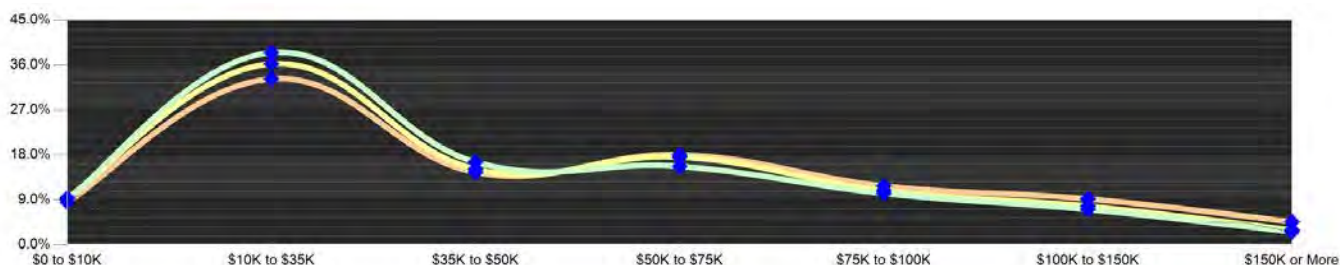
Education Attainment (2014)

	1 Mile	3 Miles	5 Miles
Elementary or Some High School	608 12.1%	4,004 10.8%	9,902 9.5%
High School Graduate	2,303 45.7%	16,522 44.7%	42,780 40.9%
Some College or Associate Degree	1,454 28.9%	10,721 29.0%	30,576 29.2%
Bachelor or Graduate Degree	673 13.4%	5,718 15.5%	21,407 20.5%



Household Income (2014)

	1 Mile	3 Miles	5 Miles
Estimated Average Household Income	\$42,379	\$44,618	\$49,992
Estimated Median Household Income	\$36,135	\$38,025	\$41,098
HH Income Under \$10,000	292 9.2%	2,202 9.4%	5,628 8.6%
HH Income \$10,000 to \$34,999	1,229 38.5%	8,486 36.3%	21,861 33.3%
HH Income \$35,000 to \$49,999	529 16.6%	3,547 15.2%	9,544 14.5%
HH Income \$50,000 to \$74,999	501 15.7%	4,116 17.6%	11,859 18.0%
HH Income \$75,000 to \$99,999	226 7.1%	1,813 7.7%	6,045 9.2%
HH Income \$100,000 to \$149,999	226 7.1%	1,813 7.7%	6,045 9.2%
HH Income \$150,000 or More	83 2.6%	694 3.0%	3,026 4.6%



This report was produced using data from private and government sources deemed to be reliable. The information herein is provided without representation or warranty.

EXPANDED PROFILE

2000-2010 Census, 2014 Estimates with 2019 Projections

Calculated using Proportional Block Groups

Lat/Lon: 40.3366/-79.8902

RF5

Monongahela Ave Glassport, PA	1 Mile	3 Miles	5 Miles
Population			
Estimated Population (2014)	6,955	52,499	147,115
Projected Population (2019)	6,986	52,731	147,777
Census Population (2010)	6,946	52,425	146,906
Census Population (2000)	7,983	60,660	162,382
Projected Annual Growth (2014 to 2019)	31 0.1%	232 0.1%	663 0.1%
Historical Annual Growth (2010 to 2014)	9 -	74 -	209 -
Historical Annual Growth (2000 to 2010)	-1,037 -1.3%	-8,235 -1.4%	-15,476 -1.0%
Estimated Population Density (2014)	2,216 <i>psm</i>	1,858 <i>psm</i>	1,874 <i>psm</i>
Trade Area Size	3.14 <i>sq mi</i>	28.26 <i>sq mi</i>	78.49 <i>sq mi</i>
Households			
Estimated Households (2014)	3,190	23,397	65,716
Projected Households (2019)	3,267	23,959	67,303
Census Households (2010)	3,126	22,920	64,379
Census Households (2000)	3,490	25,414	68,482
Estimated Households with Children (2014)	774 24.3%	6,032 25.8%	16,905 25.7%
Estimated Average Household Size (2014)	2.17	2.20	2.21
Average Household Income			
Estimated Average Household Income (2014)	\$46,706	\$48,578	\$54,835
Projected Average Household Income (2019)	\$50,377	\$52,605	\$59,424
Estimated Average Family Income (2014)	\$59,396	\$59,734	\$67,785
Median Household Income			
Estimated Median Household Income (2014)	\$38,608	\$41,768	\$45,590
Projected Median Household Income (2019)	\$41,891	\$45,098	\$49,315
Estimated Median Family Income (2014)	\$52,524	\$53,366	\$59,639
Per Capita Income			
Estimated Per Capita Income (2014)	\$21,472	\$21,843	\$24,635
Projected Per Capita Income (2019)	\$23,615	\$24,112	\$27,217
Estimated Per Capita income 5 Year Growth	\$2,143 10.0%	\$2,270 10.4%	\$2,582 10.5%
Estimated Average Household Net Worth (2014)	\$301,770	\$310,042	\$340,215
Daytime Demos (2014)			
Total Businesses	278	2,058	5,354
Total Employees	3,355	27,349	61,257
Company Headquarter Businesses	3 1.1%	11 0.5%	18 0.3%
Company Headquarter Employees	196 5.9%	561 2.1%	1,254 2.0%
Employee Population per Business	12.1	13.3	11.4
Residential Population per Business	25.0	25.5	27.5

This report was produced using data from private and government sources deemed to be reliable. The information herein is provided without representation or warranty.

EXPANDED PROFILE

2000-2010 Census, 2014 Estimates with 2019 Projections

Calculated using Proportional Block Groups

Lat/Lon: 40.3366/-79.8902

RF5

Monongahela Ave		1 Mile		3 Miles		5 Miles	
Glassport, PA							
Race & Ethnicity							
White (2014)	6,528	93.9%	41,923	79.9%	118,806	80.8%	
Black or African American (2014)	265	3.8%	8,760	16.7%	23,017	15.6%	
American Indian or Alaska Native (2014)	17	0.2%	107	0.2%	230	0.2%	
Asian (2014)	22	0.3%	174	0.3%	1,404	1.0%	
Hawaiian or Pacific Islander (2014)	3	-	14	-	35	-	
Other Race (2014)	14	0.2%	181	0.3%	476	0.3%	
Two or More Races (2014)	107	1.5%	1,342	2.6%	3,148	2.1%	
Not Hispanic or Latino Population (2014)	6,848	98.5%	51,593	98.3%	144,771	98.4%	
Hispanic or Latino Population (2014)	107	1.5%	907	1.7%	2,343	1.6%	
Not Hispanic or Latino Population (2019)	6,866	98.3%	51,708	98.1%	145,136	98.2%	
Hispanic or Latino Population (2019)	120	1.7%	1,023	1.9%	2,642	1.8%	
Not Hispanic or Latino Population (2010)	6,856	98.7%	51,657	98.5%	144,923	98.7%	
Hispanic or Latino Population (2010)	90	1.3%	768	1.5%	1,982	1.3%	
Not Hispanic or Latino Population (2000)	7,919	99.2%	60,103	99.1%	161,081	99.2%	
Hispanic or Latino Population (2000)	63	0.8%	558	0.9%	1,301	0.8%	
Projected Hispanic Annual Growth (2014 to 2019)	13	2.5%	117	2.6%	299	2.5%	
Historic Hispanic Annual Growth (2000 to 2014)	44	4.9%	349	4.5%	1,042	5.7%	
Age Distribution (2014)							
Age Under 5	371	5.3%	2,916	5.6%	8,149	5.5%	
Age 5 to 9 Years	356	5.1%	2,771	5.3%	7,802	5.3%	
Age 10 to 14 Years	352	5.1%	2,876	5.5%	8,040	5.5%	
Age 15 to 19 Years	400	5.8%	3,186	6.1%	8,780	6.0%	
Age 20 to 24 Years	408	5.9%	2,831	5.4%	7,988	5.4%	
Age 25 to 29 Years	435	6.3%	3,167	6.0%	9,120	6.2%	
Age 30 to 34 Years	441	6.3%	3,217	6.1%	9,131	6.2%	
Age 35 to 39 Years	392	5.6%	2,897	5.5%	8,038	5.5%	
Age 40 to 44 Years	400	5.7%	2,958	5.6%	8,274	5.6%	
Age 45 to 49 Years	434	6.2%	3,371	6.4%	9,482	6.4%	
Age 50 to 54 Years	532	7.7%	4,003	7.6%	11,276	7.7%	
Age 55 to 59 Years	543	7.8%	4,205	8.0%	11,726	8.0%	
Age 60 to 64 Years	500	7.2%	3,748	7.1%	10,351	7.0%	
Age 65 to 74 Years	704	10.1%	5,035	9.6%	14,182	9.6%	
Age 75 to 84 Years	458	6.6%	3,354	6.4%	9,332	6.3%	
Age 85 Years or Over	228	3.3%	1,966	3.7%	5,440	3.7%	
Median Age	42.9		42.9		42.7		
Gender Age Distribution (2014)							
Female Population	3,641	52.3%	27,774	52.9%	77,677	52.8%	
Age 0 to 19 Years	732	20.1%	5,858	21.1%	16,118	20.8%	
Age 20 to 64 Years	2,086	57.3%	15,691	56.5%	44,186	56.9%	
Age 65 Years or Over	822	22.6%	6,224	22.4%	17,373	22.4%	
Female Median Age	44.8		44.8		44.7		
Male Population	3,314	47.7%	24,726	47.1%	69,438	47.2%	
Age 0 to 19 Years	747	22.5%	5,890	23.8%	16,653	24.0%	
Age 20 to 64 Years	1,999	60.3%	14,705	59.5%	41,203	59.3%	
Age 65 Years or Over	568	17.2%	4,130	16.7%	11,582	16.7%	
Male Median Age	40.6		40.7		40.3		

This report was produced using data from private and government sources deemed to be reliable. The information herein is provided without representation or warranty.

EXPANDED PROFILE

2000-2010 Census, 2014 Estimates with 2019 Projections

Calculated using Proportional Block Groups

Lat/Lon: 40.3366/-79.8902

RF5

Monongahela Ave Glassport, PA	1 Mile		3 Miles		5 Miles	
Household Income Distribution (2014)						
HH Income \$200,000 or More	27	0.8%	259	1.1%	1,325	2.0%
HH Income \$150,000 to \$199,999	56	1.8%	435	1.9%	1,701	2.6%
HH Income \$100,000 to \$149,999	226	7.1%	1,813	7.7%	6,045	9.2%
HH Income \$75,000 to \$99,999	329	10.3%	2,538	10.8%	7,752	11.8%
HH Income \$50,000 to \$74,999	501	15.7%	4,116	17.6%	11,859	18.0%
HH Income \$35,000 to \$49,999	529	16.6%	3,547	15.2%	9,544	14.5%
HH Income \$25,000 to \$34,999	538	16.9%	3,279	14.0%	8,439	12.8%
HH Income \$15,000 to \$24,999	501	15.7%	3,586	15.3%	9,363	14.2%
HH Income Under \$15,000	482	15.1%	3,823	16.3%	9,688	14.7%
HH Income \$35,000 or More	1,668	52.3%	12,709	54.3%	38,226	58.2%
HH Income \$75,000 or More	638	20.0%	5,045	21.6%	16,824	25.6%
Housing (2014)						
Total Housing Units	3,521		26,199		72,494	
Housing Units Occupied	3,190	90.6%	23,397	89.3%	65,716	90.7%
Housing Units Owner-Occupied	2,077	65.1%	15,608	66.7%	43,903	66.8%
Housing Units, Renter-Occupied	1,113	34.9%	7,788	33.3%	21,813	33.2%
Housing Units, Vacant	332	9.4%	2,802	10.7%	6,778	9.3%
Marital Status (2014)						
Never Married	1,884	32.1%	15,028	34.2%	40,827	33.2%
Currently Married	2,364	40.2%	17,104	38.9%	51,988	42.2%
Separated	293	5.0%	1,882	4.3%	4,865	4.0%
Widowed	590	10.0%	4,818	11.0%	12,324	10.0%
Divorced	744	12.7%	5,104	11.6%	13,118	10.7%
Household Type (2014)						
Population Family	5,282	75.9%	39,873	75.9%	113,132	76.9%
Population Non-Family	1,643	23.6%	11,624	22.1%	31,917	21.7%
Population Group Quarters	30	0.4%	1,002	1.9%	2,066	1.4%
Family Households	1,847	57.9%	13,846	59.2%	39,579	60.2%
Non-Family Households	1,342	42.1%	9,551	40.8%	26,137	39.8%
Married Couple with Children	410	17.4%	2,931	17.1%	9,165	17.6%
Average Family Household Size	2.9		2.9		2.9	
Household Size (2014)						
1 Person Households	1,146	35.9%	8,284	35.4%	22,678	34.5%
2 Person Households	1,041	32.6%	7,597	32.5%	21,745	33.1%
3 Person Households	494	15.5%	3,551	15.2%	10,081	15.3%
4 Person Households	313	9.8%	2,383	10.2%	6,998	10.6%
5 Person Households	129	4.0%	1,014	4.3%	2,759	4.2%
6 or More Person Households	68	2.1%	568	2.4%	1,456	2.2%
Household Vehicles (2014)						
Households with 0 Vehicles Available	431	13.5%	4,060	17.4%	10,805	16.4%
Households with 1 Vehicles Available	1,344	42.1%	9,793	41.9%	26,884	40.9%
Households with 2 or More Vehicles Available	1,414	44.3%	9,543	40.8%	28,027	42.6%
Total Vehicles Available	4,761		32,072		92,443	
Average Vehicles Per Household	1.5		1.4		1.4	

This report was produced using data from private and government sources deemed to be reliable. The information herein is provided without representation or warranty.

EXPANDED PROFILE

2000-2010 Census, 2014 Estimates with 2019 Projections

Calculated using Proportional Block Groups

Lat/Lon: 40.3366/-79.8902

RF5

Monongahela Ave Glassport, PA	1 Mile	3 Miles	5 Miles
Labor Force (2014)			
Estimated Labor Population Age 16 Years or Over	5,772	42,371	119,568
Estimated Civilian Employed	3,098 53.7%	22,483 53.1%	66,293 55.4%
Estimated Civilian Unemployed	310 5.4%	2,056 4.9%	5,210 4.4%
Estimated in Armed Forces	- -	21 0.1%	41 -
Estimated Not in Labor Force	2,365 41.0%	17,811 42.0%	48,024 40.2%
Unemployment Rate	5.4%	4.9%	4.4%
Occupation (2010)			
Occupation: Population Age 16 Years or Over	3,215	21,926	64,326
Management, Business, Financial Operations	280 8.7%	2,074 9.5%	7,383 11.5%
Professional, Related	589 18.3%	4,123 18.8%	12,765 19.8%
Service	628 19.5%	4,490 20.5%	12,992 20.2%
Sales, Office	967 30.1%	6,146 28.0%	17,673 27.5%
Farming, Fishing, Forestry	1 -	37 0.2%	101 0.2%
Construct, Extraction, Maintenance	356 11.1%	2,230 10.2%	5,489 8.5%
Production, Transport Material Moving	393 12.2%	2,826 12.9%	7,923 12.3%
White Collar Workers	1,836 57.1%	12,343 56.3%	37,821 58.8%
Blue Collar Workers	1,379 42.9%	9,583 43.7%	26,505 41.2%
Consumer Expenditure (2014)			
Total Household Expenditure	\$133 M	\$1.00 B	\$3.05 B
Total Non-Retail Expenditure	\$76.0 M 57.1%	\$572 M 57.2%	\$1.74 B 57.3%
Total Retail Expenditure	\$57.2 M 42.9%	\$429 M 42.8%	\$1.30 B 42.7%
Apparel	\$6.32 M 4.7%	\$47.7 M 4.8%	\$145 M 4.8%
Contributions	\$4.62 M 3.5%	\$35.0 M 3.5%	\$109 M 3.6%
Education	\$2.92 M 2.2%	\$22.3 M 2.2%	\$70.2 M 2.3%
Entertainment	\$7.37 M 5.5%	\$55.5 M 5.5%	\$169 M 5.6%
Food and Beverages	\$20.9 M 15.7%	\$157 M 15.6%	\$472 M 15.5%
Furnishings and Equipment	\$5.63 M 4.2%	\$42.6 M 4.3%	\$131 M 4.3%
Gifts	\$3.35 M 2.5%	\$25.4 M 2.5%	\$78.9 M 2.6%
Health Care	\$8.65 M 6.5%	\$64.4 M 6.4%	\$193 M 6.3%
Household Operations	\$4.48 M 3.4%	\$34.0 M 3.4%	\$106 M 3.5%
Miscellaneous Expenses	\$2.30 M 1.7%	\$17.2 M 1.7%	\$51.9 M 1.7%
Personal Care	\$1.94 M 1.5%	\$14.6 M 1.5%	\$44.3 M 1.5%
Personal Insurance	\$1.28 M 1.0%	\$9.67 M 1.0%	\$30.1 M 1.0%
Reading	\$439 K 0.3%	\$3.30 M 0.3%	\$10.1 M 0.3%
Shelter	\$25.6 M 19.2%	\$193 M 19.2%	\$587 M 19.3%
Tobacco	\$970 K 0.7%	\$7.15 M 0.7%	\$21.0 M 0.7%
Transportation	\$26.7 M 20.1%	\$201 M 20.0%	\$608 M 20.0%
Utilities	\$9.76 M 7.3%	\$72.8 M 7.3%	\$218 M 7.2%
Educational Attainment (2014)			
Adult Population Age 25 Years or Over	5,038	36,966	104,665
Elementary (Grade Level 0 to 8)	201 4.0%	1,004 2.7%	2,661 2.5%
Some High School (Grade Level 9 to 11)	407 8.1%	3,000 8.1%	7,241 6.9%
High School Graduate	2,303 45.7%	16,522 44.7%	42,780 40.9%
Some College	964 19.1%	6,692 18.1%	19,868 19.0%
Associate Degree Only	490 9.7%	4,029 10.9%	10,709 10.2%
Bachelor Degree Only	536 10.6%	4,044 10.9%	14,379 13.7%
Graduate Degree	137 2.7%	1,674 4.5%	7,028 6.7%

This report was produced using data from private and government sources deemed to be reliable. The information herein is provided without representation or warranty.

EXPANDED PROFILE

2000-2010 Census, 2014 Estimates with 2019 Projections

Calculated using Proportional Block Groups

Lat/Lon: 40.3366/-79.8902

RF5

Monongahela Ave Glassport, PA	1 Mile		3 Miles		5 Miles	
Units In Structure (2010)						
1 Detached Unit	2,310	73.9%	16,839	73.5%	45,494	70.7%
1 Attached Unit	252	8.1%	1,953	8.5%	5,466	8.5%
2 to 4 Units	270	8.6%	1,334	5.8%	3,807	5.9%
5 to 9 Units	180	5.8%	849	3.7%	3,093	4.8%
10 to 19 Units	56	1.8%	422	1.8%	1,855	2.9%
20 to 49 Units	35	1.1%	314	1.4%	1,502	2.3%
50 or More Units	8	0.3%	871	3.8%	2,502	3.9%
Mobile Home or Trailer	15	0.5%	338	1.5%	659	1.0%
Other Structure	-	-	1	-	1	-
Homes Built By Year (2010)						
Homes Built 2005 or later	41	1.3%	353	1.5%	1,219	1.9%
Homes Built 2000 to 2004	58	1.9%	506	2.2%	1,891	2.9%
Homes Built 1990 to 1999	132	4.2%	1,096	4.8%	3,413	5.3%
Homes Built 1980 to 1989	135	4.3%	1,334	5.8%	4,118	6.4%
Homes Built 1970 to 1979	233	7.5%	1,991	8.7%	6,223	9.7%
Homes Built 1960 to 1969	279	8.9%	2,260	9.9%	7,330	11.4%
Homes Built 1950 to 1959	835	26.7%	5,442	23.7%	14,702	22.8%
Homes Built Before 1949	1,413	45.2%	9,938	43.4%	25,484	39.6%
Home Values (2010)						
Home Values \$1,000,000 or More	3	0.1%	32	0.2%	91	0.2%
Home Values \$500,000 to \$999,999	22	1.1%	154	1.0%	448	1.0%
Home Values \$400,000 to \$499,999	18	0.9%	146	0.9%	416	1.0%
Home Values \$300,000 to \$399,999	40	1.9%	322	2.1%	1,319	3.1%
Home Values \$200,000 to \$299,999	106	5.2%	951	6.2%	3,563	8.3%
Home Values \$150,000 to \$199,999	161	7.9%	1,274	8.3%	4,509	10.5%
Home Values \$100,000 to \$149,999	212	10.4%	1,989	13.0%	8,277	19.2%
Home Values \$70,000 to \$99,999	462	22.6%	3,963	25.8%	10,473	24.3%
Home Values \$50,000 to \$69,999	475	23.2%	2,775	18.1%	6,129	14.2%
Home Values \$25,000 to \$49,999	405	19.8%	2,311	15.1%	5,218	12.1%
Home Values Under \$25,000	141	6.9%	1,428	9.3%	2,697	6.3%
Owner-Occupied Median Home Value	\$73,884		\$77,301		\$93,655	
Renter-Occupied Median Rent	\$384		\$447		\$489	
Transportation To Work (2010)						
Drive to Work Alone	2,541	79.4%	16,322	75.8%	47,622	75.6%
Drive to Work in Carpool	323	10.1%	2,199	10.2%	6,290	10.0%
Travel to Work by Public Transportation	127	4.0%	1,505	7.0%	5,201	8.3%
Drive to Work on Motorcycle	-	-	5	-	41	0.1%
Walk or Bicycle to Work	135	4.2%	786	3.7%	1,895	3.0%
Other Means	3	0.1%	77	0.4%	311	0.5%
Work at Home	72	2.3%	650	3.0%	1,643	2.6%
Travel Time (2010)						
Travel to Work in 14 Minutes or Less	911	29.1%	5,783	27.7%	15,543	25.3%
Travel to Work in 15 to 29 Minutes	1,136	36.3%	7,029	33.6%	19,499	31.8%
Travel to Work in 30 to 59 Minutes	862	27.5%	6,505	31.1%	21,287	34.7%
Travel to Work in 60 Minutes or More	219	7.0%	1,578	7.6%	5,030	8.2%
Average Minutes Travel to Work	20.8		22.1		24.2	

This report was produced using data from private and government sources deemed to be reliable. The information herein is provided without representation or warranty.