

# COCCA DEVELOPMENT

## OFFICE/WAREHOUSE SPACE FOR LEASE

**1690 TIBBETTS-WICK ROAD**

GIRARD, OH 44420



- Join Baker Installations in office/warehouse space with shared loading docks
- Easy ingress & egress onto Tibbetts-Wick Road
- Ideal location with convenient access to Interstate 80 ramp, between Route 422 and Belmont Avenue (Route 194)

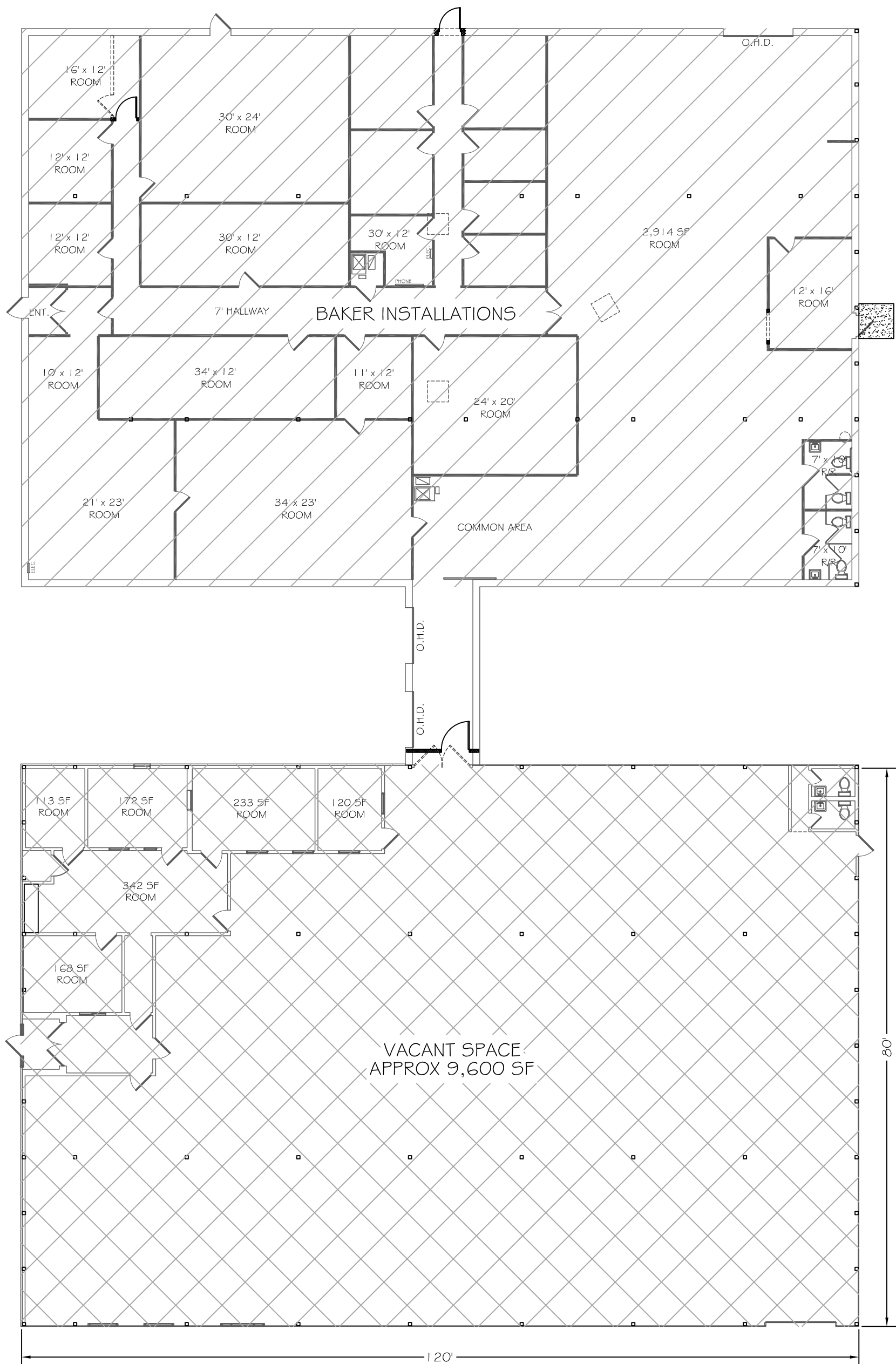
**AVAILABLE SUITE AREA—\$6/square foot NNN:**

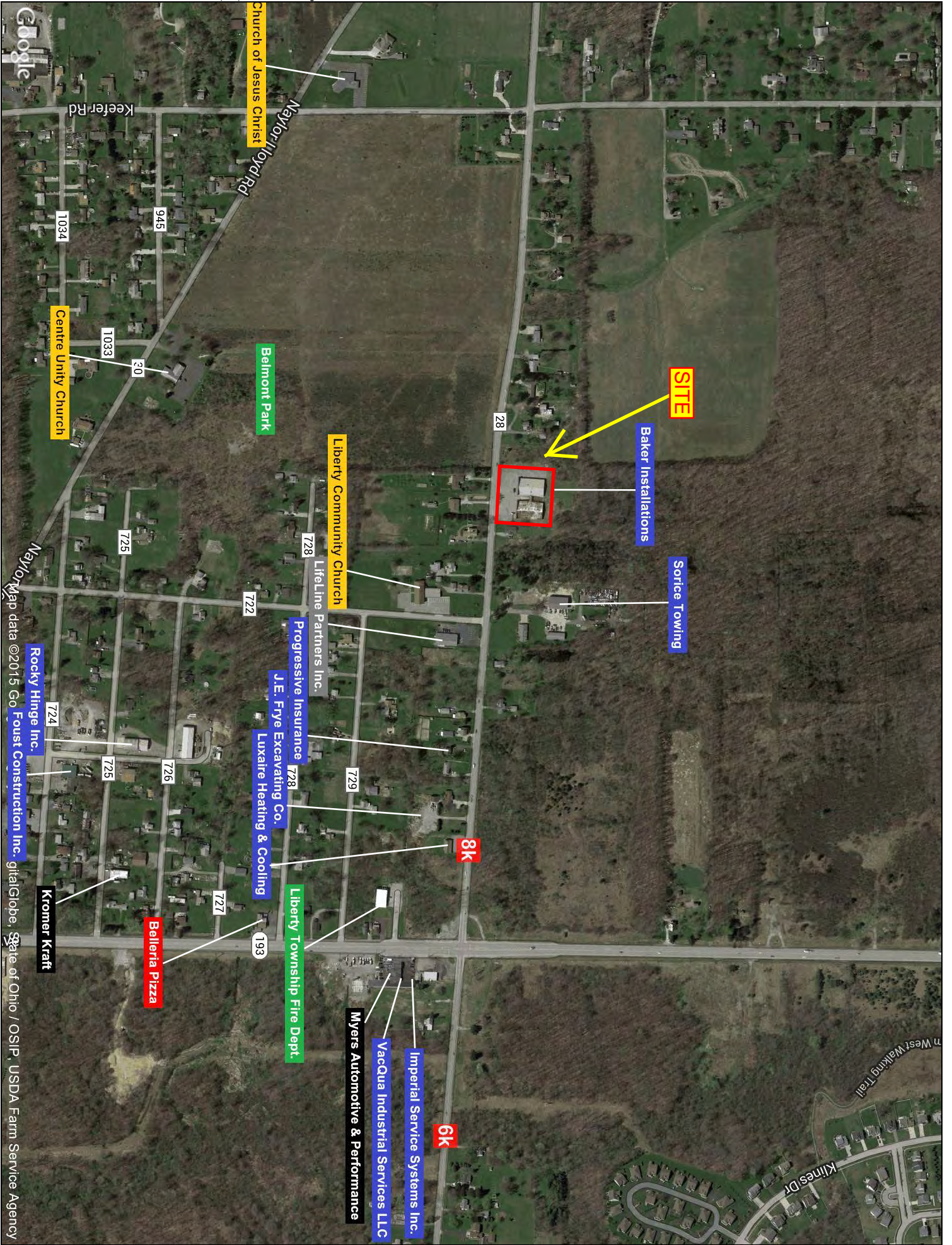
Approximately 9,800 square feet

NNN: Base rent plus Real Estate Taxes and Insurance. Tenant pays separately metered utilities for gas, electric, water, sewer, & trash removal as well as own property maintenance including snow removal and lawn care.

**CALL 330-729-1010 FOR MORE INFORMATION**

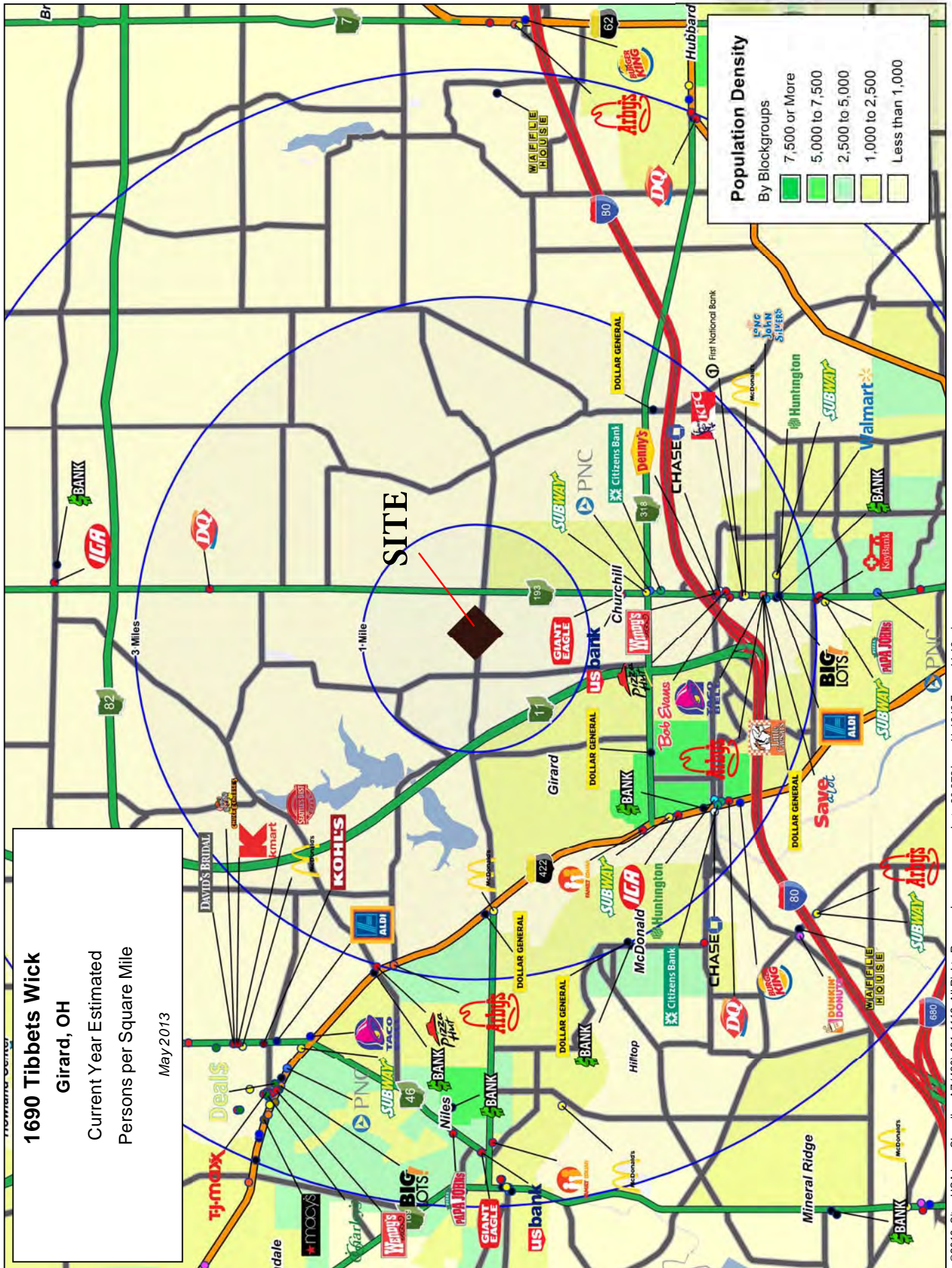
**[www.coccadevelopment.com](http://www.coccadevelopment.com)**





This map was produced using data from private and government sources deemed to be reliable. The information herein is provided without representation or warranty.

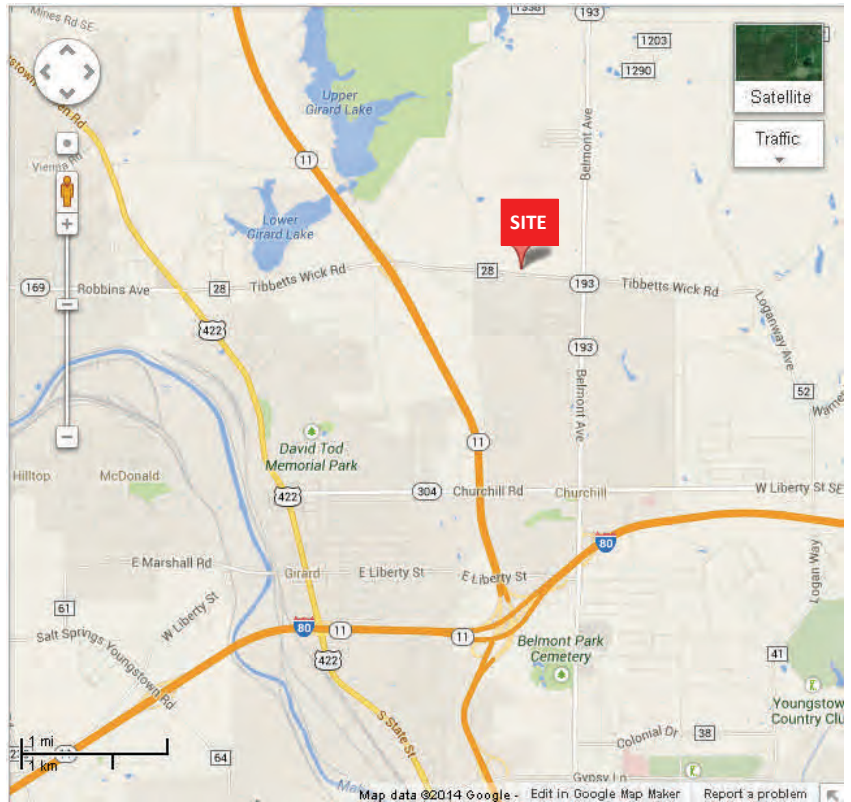
This map was produced using data from private and government sources deemed to be reliable. The information herein is provided without representation or warranty.



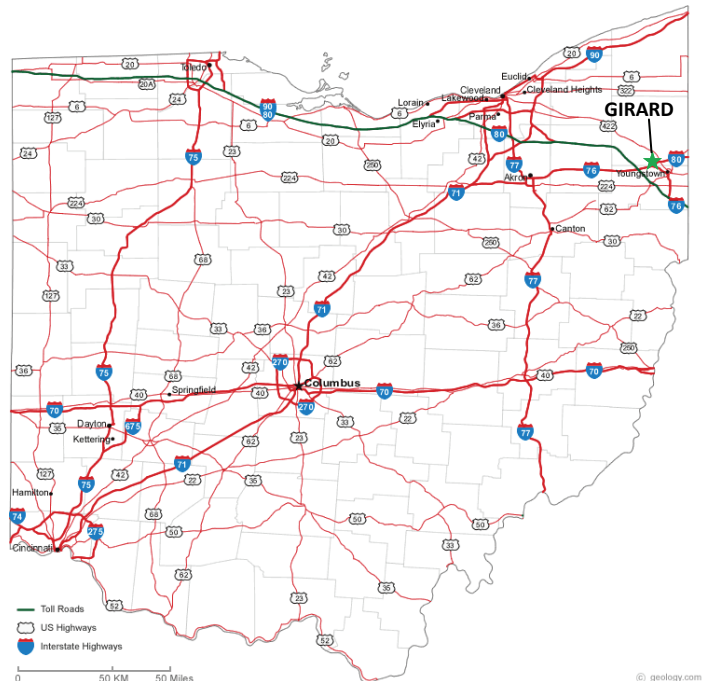
©2013, Sites USA Inc., Chandler, AZ (480) 491-1112. All Rights Reserved. Lat: -80.672 Lon: 41.1843 Zoom: 11.12 mi

# 1690 Tibbetts-Wick Road Girard, OH 44420

The site is ideally located on Tibbetts-Wick Road, 1 mile east of OH-11. The average daily traffic count on Tibbetts-Wick Rd. in front of the center is approximately 8,000 cars.



Situated on the northeast portion of the state, it is only 16 miles from Erie, PA.



# COCCA DEVELOPMENT, LTD

**1690 Tibbetts-Wick Road Girard, OH 44420**

## **AT A GLANCE**

- ◆ Girard is a city in Trumbull County, Ohio and is part of the Youngstown-Warren-Boardman, OH-PA Metropolitan Statistical Area
- ◆ Believed it was named for Stephen Girard, philanthropist and founder of Girard College at Philadelphia, Pennsylvania. It remained static until the Ohio and Erie Canal was completed
- ◆ Located 5 miles North of Youngstown OH, 44 miles East of Akron OH and 72 miles Northwest of Pittsburgh, PA
- ◆ Birthplace of Kathleen Bradley (Female model and former Barker Beauty on 'The Price is Right' from 1990-2001), and resident Mel Triplett (former American Football running back who played 8 seasons with the New York Giants).

# GRAPHIC PROFILE

2000-2010 Census, 2014 Estimates with 2019 Projections

Calculated using Proportional Block Groups

Lat/Lon: 41.1842/-80.6724

RGRAP3

## 1690 Tibbets Wick

Girard, OH

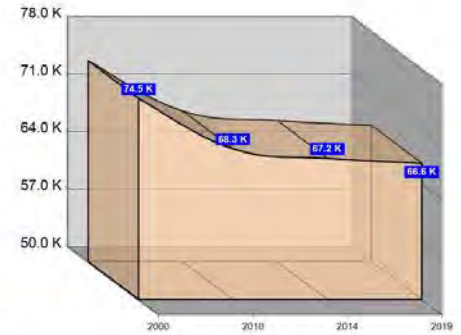
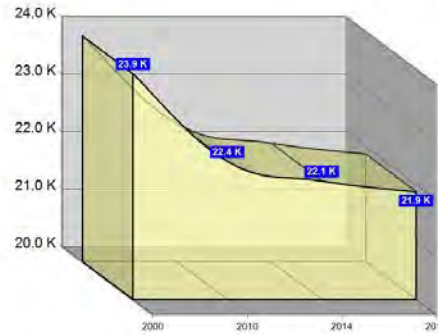
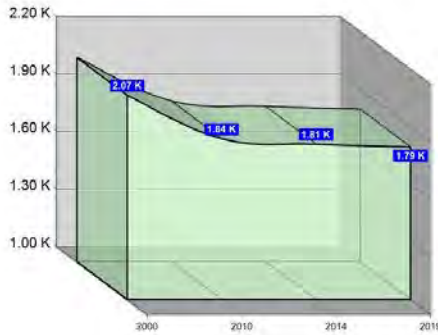
1 Mile

3 Miles

5 Miles

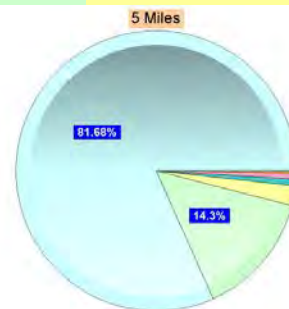
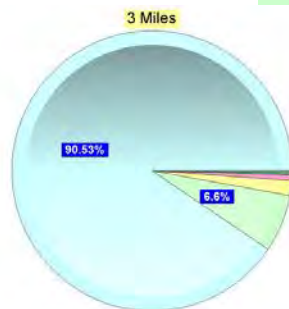
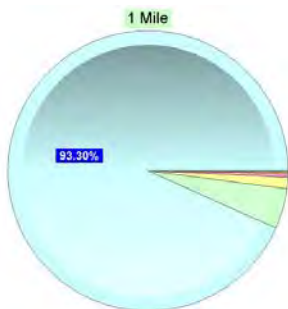
### Population

Estimated Population (2014)	1,811	22,059	67,179
Projected Population (2019)	1,795	21,870	66,576
Census Population (2010)	1,838	22,399	68,327
Census Population (2000)	2,066	23,927	74,484
Projected Annual Growth (2014-2019)	-16 -0.2%	-188 -0.2%	-603 -0.2%
Historical Annual Growth (2010-2014)	-28 -3.1%	-341 -1.7%	-1,148 -2.3%
Historical Annual Growth (2000-2010)	-227 -1.1%	-1,528 -0.6%	-6,156 -0.8%
Estimated Population Density (2014)	577 psm	780 psm	856 psm
Trade Area Size	3.1 sq mi	28.3 sq mi	78.5 sq mi



### Race and Ethnicity (2014)

Not Hispanic or Latino Population	1,768	97.6%	21,575	97.8%	64,953	96.7%
White	1,656	93.6%	19,628	91.0%	53,686	82.7%
Black or African American	81	4.6%	1,432	6.6%	9,361	14.4%
American Indian or Alaska Native	2	0.1%	31	0.1%	126	0.2%
Asian	9	0.5%	140	0.6%	483	0.7%
Hawaiian or Pacific Islander	-	-	7	-	16	-
Other Race	-	-	18	0.1%	48	0.1%
Two or More Races	20	1.1%	318	1.5%	1,234	1.9%
Hispanic or Latino Population	43	2.4%	484	2.2%	2,226	3.3%
White	34	79.2%	343	70.8%	1,187	53.3%
Black or African American	3	7.6%	32	6.7%	261	11.7%
American Indian or Alaska Native	1	1.4%	8	1.6%	21	0.9%
Asian	-	-	1	0.2%	4	0.2%
Hispanic Hawaiian or Pacific Islander	-	-	-	-	1	-
Other Race	1	2.8%	41	8.5%	455	20.5%
Two or More Races	4	9.0%	59	12.3%	297	13.3%



White Black or African American American Indian or Alaska Native Asian Hawaiian or Pacific Islander Other Race 2+ Races

This report was produced using data from private and government sources deemed to be reliable. The information herein is provided without representation or warranty.

# GRAPHIC PROFILE

2000-2010 Census, 2014 Estimates with 2019 Projections

Calculated using Proportional Block Groups

Lat/Lon: 41.1842/-80.6724

RGRAP3

## 1690 Tibbets Wick

### Girard, OH

1 Mile

3 Miles

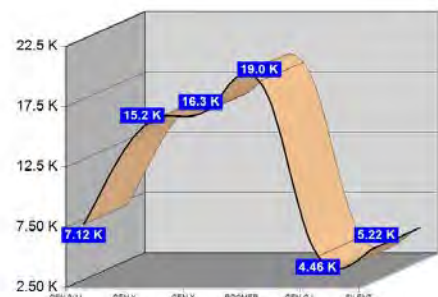
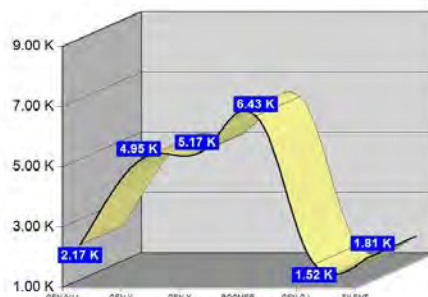
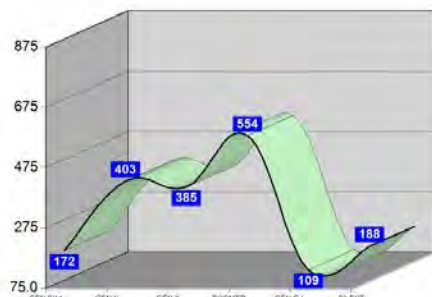
5 Miles

#### Age Distribution (2014)

	1 Mile	3 Miles	5 Miles
Age Under 5 Years	81 4.5%	1,031 4.7%	3,518 5.2%
Age 5 to 9 Years	91 5.1%	1,144 5.2%	3,603 5.4%
Age 10 to 14 Years	96 5.3%	1,223 5.5%	3,695 5.5%
Age 15 to 19 Years	101 5.6%	1,353 6.1%	4,176 6.2%
Age 20 to 24 Years	102 5.6%	1,387 6.3%	4,519 6.7%
Age 25 to 29 Years	86 4.7%	1,211 5.5%	3,885 5.8%
Age 30 to 34 Years	97 5.4%	1,148 5.2%	3,641 5.4%
Age 35 to 39 Years	95 5.3%	1,084 4.9%	3,462 5.2%
Age 40 to 44 Years	91 5.0%	1,254 5.7%	3,782 5.6%
Age 45 to 49 Years	120 6.6%	1,464 6.6%	4,268 6.4%
Age 50 to 54 Years	151 8.3%	1,778 8.1%	5,052 7.5%
Age 55 to 59 Years	154 8.5%	1,820 8.3%	5,301 7.9%
Age 60 to 64 Years	135 7.5%	1,605 7.3%	4,821 7.2%
Age 65 to 69 Years	114 6.3%	1,230 5.6%	3,782 5.6%
Age 70 to 74 Years	105 5.8%	980 4.4%	2,880 4.3%
Age 75 to 79 Years	83 4.6%	828 3.8%	2,339 3.5%
Age 80 to 84 Years	55 3.1%	700 3.2%	1,935 2.9%
Age 85 Years or Over	54 3.0%	819 3.7%	2,522 3.8%
Median Age	46.6	44.4	43.0

#### Generation (2014)

	1 Mile	3 Miles	5 Miles
Generation 9/11 Millennials (Age Under 10 Years)	172 9.5%	2,175 9.9%	7,121 10.6%
Gen Y to Echo Boomers (Age 10 to 29 Years)	385 21.2%	5,174 23.5%	16,274 24.2%
Gen Xers (Age 30 to 49 Years)	403 22.3%	4,949 22.4%	15,152 22.6%
Baby Boomers (Age 50 to 69 Years)	554 30.6%	6,434 29.2%	18,956 28.2%
Silent Generation (Age 70 to 79 Years)	188 10.4%	1,808 8.2%	5,219 7.8%
G.I. Generation (Age 80 Years or Over)	109 6.0%	1,519 6.9%	4,457 6.6%



This report was produced using data from private and government sources deemed to be reliable. The information herein is provided without representation or warranty.



# GRAPHIC PROFILE

2000-2010 Census, 2014 Estimates with 2019 Projections

Calculated using Proportional Block Groups

Lat/Lon: 41.1842/-80.6724

RGRAP3

## 1690 Tibbets Wick

Girard, OH

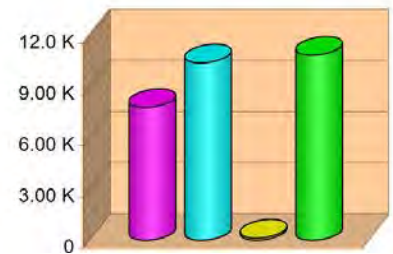
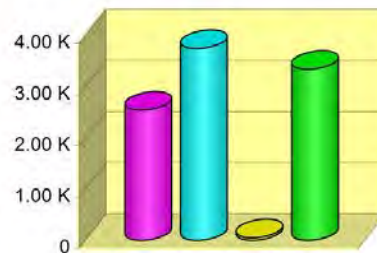
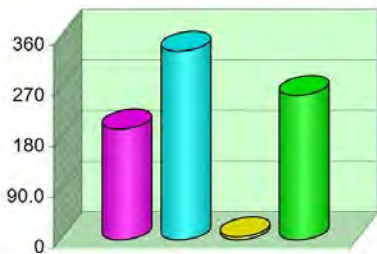
1 Mile

3 Miles

5 Miles

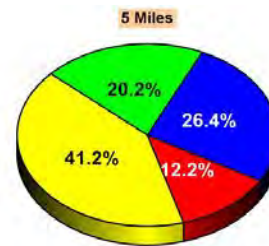
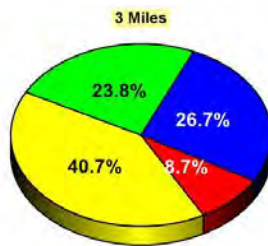
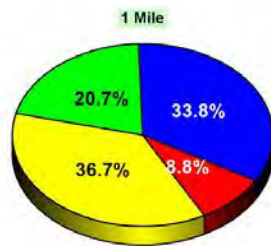
### Household Type (2014)

	1 Mile	3 Miles	5 Miles
Total Households	795	9,686	29,180
Family Households	533 42.2%	6,293 38.7%	18,198 35.7%
Family Households with Children	197 37.0%	2,544 40.4%	7,791 42.8%
Family Households No Children	336 63.0%	3,749 59.6%	10,406 57.2%
Non-Family Households	262 42.2%	3,393 38.7%	10,983 35.7%
Non-Family Households with Children	5 2.0%	50 1.5%	130 1.2%
Non-Family Households No Children	257 98.0%	3,343 98.5%	10,853 98.8%



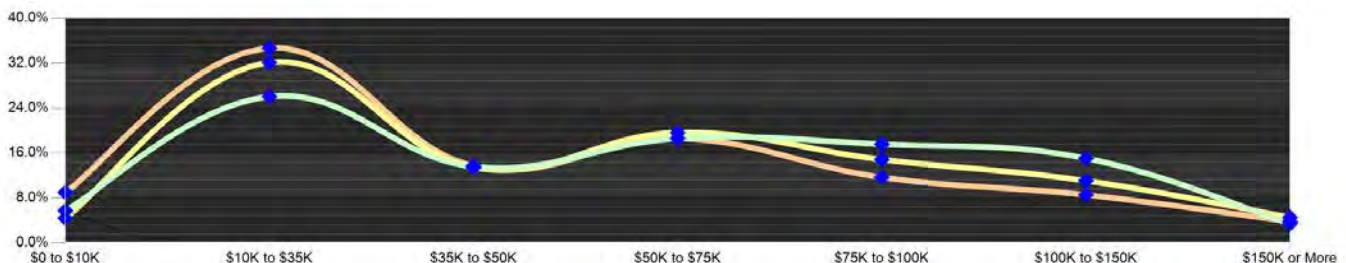
### Education Attainment (2014)

	1 Mile	3 Miles	5 Miles
Elementary or Some High School	118 8.8%	1,376 8.7%	5,611 12.2%
High School Graduate	489 36.7%	6,432 40.7%	18,971 41.2%
Some College or Associate Degree	451 33.8%	4,221 26.7%	12,161 26.4%
Bachelor or Graduate Degree	276 20.7%	3,760 23.8%	9,292 20.2%



### Household Income (2014)

	1 Mile	3 Miles	5 Miles
Estimated Average Household Income	\$54,936	\$56,244	\$48,662
Estimated Median Household Income	\$48,411	\$46,603	\$40,215
HH Income Under \$10,000	46 5.7%	425 4.4%	2,623 9.0%
HH Income \$10,000 to \$34,999	207 26.1%	3,112 32.1%	10,118 34.7%
HH Income \$35,000 to \$49,999	108 13.6%	1,299 13.4%	4,001 13.7%
HH Income \$50,000 to \$74,999	148 18.6%	1,903 19.6%	5,434 18.6%
HH Income \$75,000 to \$99,999	120 15.1%	1,071 11.1%	2,492 8.5%
HH Income \$100,000 to \$149,999	120 15.1%	1,071 11.1%	2,492 8.5%
HH Income \$150,000 or More	27 3.4%	439 4.5%	1,105 3.8%



This report was produced using data from private and government sources deemed to be reliable. The information herein is provided without representation or warranty.

# EXPANDED PROFILE

2000-2010 Census, 2014 Estimates with 2019 Projections

Calculated using Proportional Block Groups

Lat/Lon: 41.1842/-80.6724

RF5

## 1690 Tibbets Wick

### Girard, OH

#### Population

	1 Mile	3 Miles	5 Miles
Estimated Population (2014)	1,811	22,059	67,179
Projected Population (2019)	1,795	21,870	66,576
Census Population (2010)	1,838	22,399	68,327
Census Population (2000)	2,066	23,927	74,484
Projected Annual Growth (2014 to 2019)	-16 -0.2%	-188 -0.2%	-603 -0.2%
Historical Annual Growth (2010 to 2014)	-28 -0.4%	-341 -0.4%	-1,148 -0.4%
Historical Annual Growth (2000 to 2010)	-227 -1.1%	-1,528 -0.6%	-6,156 -0.8%
Estimated Population Density (2014)	577 <i>psm</i>	780 <i>psm</i>	856 <i>psm</i>
Trade Area Size	3.14 <i>sq mi</i>	28.26 <i>sq mi</i>	78.49 <i>sq mi</i>

#### Households

Estimated Households (2014)	795	9,686	29,180
Projected Households (2019)	807	9,835	29,632
Census Households (2010)	780	9,508	28,655
Census Households (2000)	839	9,771	30,016
Estimated Households with Children (2014)	202 25.5%	2,594 26.8%	7,921 27.1%
Estimated Average Household Size (2014)	2.27	2.26	2.23

#### Average Household Income

Estimated Average Household Income (2014)	\$62,768	\$62,379	\$53,570
Projected Average Household Income (2019)	\$68,222	\$67,753	\$58,184
Estimated Average Family Income (2014)	\$70,170	\$73,658	\$64,751

#### Median Household Income

Estimated Median Household Income (2014)	\$52,680	\$50,457	\$44,000
Projected Median Household Income (2019)	\$56,986	\$54,896	\$47,719
Estimated Median Family Income (2014)	\$70,272	\$64,690	\$56,926

#### Per Capita Income

Estimated Per Capita Income (2014)	\$27,586	\$27,438	\$23,565
Projected Per Capita Income (2019)	\$30,729	\$30,522	\$26,231
Estimated Per Capita income 5 Year Growth	\$3,144 11.4%	\$3,084 11.2%	\$2,666 11.3%
Estimated Average Household Net Worth (2014)	\$379,273	\$382,716	\$345,832

#### Daytime Demos (2014)

Total Businesses	91	1,060	3,198
Total Employees	1,648	12,020	53,313
Company Headquarter Businesses	2 2.4%	4 0.4%	24 0.7%
Company Headquarter Employees	268 16.3%	1,016 8.5%	11,496 21.6%
Employee Population per Business	18.2	11.3	16.7
Residential Population per Business	20.0	20.8	21.0

This report was produced using data from private and government sources deemed to be reliable. The information herein is provided without representation or warranty.

# EXPANDED PROFILE

2000-2010 Census, 2014 Estimates with 2019 Projections

Calculated using Proportional Block Groups

Lat/Lon: 41.1842/-80.6724

RF5

## 1690 Tibbets Wick

### Girard, OH

#### Race & Ethnicity

	1 Mile		3 Miles		5 Miles	
White (2014)	1,690	93.3%	19,971	90.5%	54,873	81.7%
Black or African American (2014)	84	4.7%	1,464	6.6%	9,622	14.3%
American Indian or Alaska Native (2014)	3	0.2%	38	0.2%	147	0.2%
Asian (2014)	9	0.5%	141	0.6%	487	0.7%
Hawaiian or Pacific Islander (2014)	-	-	7	-	17	-
Other Race (2014)	2	0.1%	59	0.3%	504	0.7%
Two or More Races (2014)	24	1.3%	378	1.7%	1,531	2.3%
Not Hispanic or Latino Population (2014)	1,768	97.6%	21,575	97.8%	64,953	96.7%
Hispanic or Latino Population (2014)	43	2.4%	484	2.2%	2,226	3.3%
Not Hispanic or Latino Population (2019)	1,746	97.3%	21,315	97.5%	64,141	96.3%
Hispanic or Latino Population (2019)	49	2.7%	555	2.5%	2,435	3.7%
Not Hispanic or Latino Population (2010)	1,801	98.0%	21,980	98.1%	66,216	96.9%
Hispanic or Latino Population (2010)	37	2.0%	420	1.9%	2,111	3.1%
Not Hispanic or Latino Population (2000)	2,048	99.1%	23,709	99.1%	73,356	98.5%
Hispanic or Latino Population (2000)	18	0.9%	219	0.9%	1,127	1.5%
Projected Hispanic Annual Growth (2014 to 2019)	6	2.7%	71	2.9%	209	1.9%
Historic Hispanic Annual Growth (2000 to 2014)	25	10.3%	265	8.7%	1,099	7.0%

#### Age Distribution (2014)

	1 Mile		3 Miles		5 Miles	
Age Under 5	81	4.5%	1,031	4.7%	3,518	5.2%
Age 5 to 9 Years	91	5.1%	1,144	5.2%	3,603	5.4%
Age 10 to 14 Years	96	5.3%	1,223	5.5%	3,695	5.5%
Age 15 to 19 Years	101	5.6%	1,353	6.1%	4,176	6.2%
Age 20 to 24 Years	102	5.6%	1,387	6.3%	4,519	6.7%
Age 25 to 29 Years	86	4.7%	1,211	5.5%	3,885	5.8%
Age 30 to 34 Years	97	5.4%	1,148	5.2%	3,641	5.4%
Age 35 to 39 Years	95	5.3%	1,084	4.9%	3,462	5.2%
Age 40 to 44 Years	91	5.0%	1,254	5.7%	3,782	5.6%
Age 45 to 49 Years	120	6.6%	1,464	6.6%	4,268	6.4%
Age 50 to 54 Years	151	8.3%	1,778	8.1%	5,052	7.5%
Age 55 to 59 Years	154	8.5%	1,820	8.3%	5,301	7.9%
Age 60 to 64 Years	135	7.5%	1,605	7.3%	4,821	7.2%
Age 65 to 74 Years	219	12.1%	2,210	10.0%	6,662	9.9%
Age 75 to 84 Years	138	7.6%	1,528	6.9%	4,274	6.4%
Age 85 Years or Over	54	3.0%	819	3.7%	2,522	3.8%
Median Age	46.6		44.4		43.0	

#### Gender Age Distribution (2014)

	1 Mile		3 Miles		5 Miles	
Female Population	922	50.9%	11,491	52.1%	34,857	51.9%
Age 0 to 19 Years	170	18.5%	2,309	20.1%	7,376	21.2%
Age 20 to 64 Years	514	55.7%	6,531	56.8%	19,573	56.2%
Age 65 Years or Over	238	25.8%	2,651	23.1%	7,908	22.7%
Female Median Age	48.9		46.4		45.1	
Male Population	889	49.1%	10,567	47.9%	32,323	48.1%
Age 0 to 19 Years	199	22.4%	2,442	23.1%	7,616	23.6%
Age 20 to 64 Years	518	58.2%	6,220	58.9%	19,157	59.3%
Age 65 Years or Over	172	19.4%	1,905	18.0%	5,550	17.2%
Male Median Age	43.9		42.2		40.7	

This report was produced using data from private and government sources deemed to be reliable. The information herein is provided without representation or warranty.

# EXPANDED PROFILE

2000-2010 Census, 2014 Estimates with 2019 Projections

Calculated using Proportional Block Groups

Lat/Lon: 41.1842/-80.6724

RF5

1690 Tibbets Wick Girard, OH	1 Mile		3 Miles		5 Miles	
<b>Household Income Distribution (2014)</b>						
HH Income \$200,000 or More	8	1.0%	156	1.6%	423	1.5%
HH Income \$150,000 to \$199,999	19	2.4%	282	2.9%	682	2.3%
HH Income \$100,000 to \$149,999	120	15.1%	1,071	11.1%	2,492	8.5%
HH Income \$75,000 to \$99,999	140	17.6%	1,437	14.8%	3,408	11.7%
HH Income \$50,000 to \$74,999	148	18.6%	1,903	19.6%	5,434	18.6%
HH Income \$35,000 to \$49,999	108	13.6%	1,299	13.4%	4,001	13.7%
HH Income \$25,000 to \$34,999	102	12.9%	1,244	12.8%	3,707	12.7%
HH Income \$15,000 to \$24,999	76	9.6%	1,338	13.8%	4,369	15.0%
HH Income Under \$15,000	74	9.3%	955	9.9%	4,665	16.0%
HH Income \$35,000 or More	542	68.2%	6,149	63.5%	16,440	56.3%
HH Income \$75,000 or More	286	36.0%	2,947	30.4%	7,005	24.0%
<b>Housing (2014)</b>						
Total Housing Units	843		10,466		32,228	
Housing Units Occupied	795	94.3%	9,686	92.5%	29,180	90.5%
Housing Units Owner-Occupied	645	81.1%	7,009	72.4%	19,608	67.2%
Housing Units, Renter-Occupied	150	18.9%	2,677	27.6%	9,572	32.8%
Housing Units, Vacant	48	5.7%	781	7.5%	3,047	9.5%
<b>Marital Status (2014)</b>						
Never Married	463	30.0%	5,635	30.2%	17,728	31.5%
Currently Married	769	49.9%	8,980	48.1%	24,026	42.6%
Separated	88	5.7%	582	3.1%	2,330	4.1%
Widowed	97	6.3%	1,435	7.7%	4,931	8.7%
Divorced	125	8.1%	2,029	10.9%	7,348	13.0%
<b>Household Type (2014)</b>						
Population Family	1,452	80.2%	17,473	79.2%	50,910	75.8%
Population Non-Family	353	19.5%	4,445	20.2%	14,260	21.2%
Population Group Quarters	6	0.3%	141	0.6%	2,010	3.0%
Family Households	533	67.0%	6,293	65.0%	18,198	62.4%
Non-Family Households	262	33.0%	3,393	35.0%	10,983	37.6%
Married Couple with Children	125	16.3%	1,565	17.4%	4,177	17.4%
Average Family Household Size	2.7		2.8		2.8	
<b>Household Size (2014)</b>						
1 Person Households	220	27.7%	2,885	29.8%	9,413	32.3%
2 Person Households	305	38.4%	3,479	35.9%	9,992	34.2%
3 Person Households	127	16.0%	1,529	15.8%	4,485	15.4%
4 Person Households	80	10.1%	1,065	11.0%	3,116	10.7%
5 Person Households	44	5.6%	487	5.0%	1,423	4.9%
6 or More Person Households	18	2.3%	240	2.5%	752	2.6%
<b>Household Vehicles (2014)</b>						
Households with 0 Vehicles Available	34	4.3%	533	5.5%	2,533	8.7%
Households with 1 Vehicles Available	238	29.9%	3,546	36.6%	11,246	38.5%
Households with 2 or More Vehicles Available	523	65.8%	5,607	57.9%	15,402	52.8%
Total Vehicles Available	1,481		17,260		48,305	
Average Vehicles Per Household	1.9		1.8		1.7	

This report was produced using data from private and government sources deemed to be reliable. The information herein is provided without representation or warranty.

# EXPANDED PROFILE

2000-2010 Census, 2014 Estimates with 2019 Projections

Calculated using Proportional Block Groups

Lat/Lon: 41.1842/-80.6724

RF5

## 1690 Tibbets Wick

### Girard, OH

#### Labor Force (2014)

	1 Mile	3 Miles	5 Miles
Estimated Labor Population Age 16 Years or Over	1,515	18,236	53,583
Estimated Civilian Employed	918 60.6%	10,319 56.6%	28,426 53.1%
Estimated Civilian Unemployed	42 2.8%	648 3.6%	2,297 4.3%
Estimated in Armed Forces	1 0.1%	34 0.2%	65 0.1%
Estimated Not in Labor Force	554 36.6%	7,236 39.7%	22,794 42.5%
Unemployment Rate	2.8%	3.6%	4.3%

#### Occupation (2010)

	1 Mile	3 Miles	5 Miles
Occupation: Population Age 16 Years or Over	835	10,017	27,395
Management, Business, Financial Operations	102 12.2%	1,185 11.8%	2,907 10.6%
Professional, Related	132 15.8%	2,213 22.1%	5,499 20.1%
Service	165 19.8%	2,084 20.8%	5,919 21.6%
Sales, Office	241 28.9%	2,428 24.2%	6,684 24.4%
Farming, Fishing, Forestry	- -	1 -	53 0.2%
Construct, Extraction, Maintenance	58 6.9%	743 7.4%	2,021 7.4%
Production, Transport Material Moving	137 16.4%	1,363 13.6%	4,312 15.7%
White Collar Workers	475 56.9%	5,826 58.2%	15,091 55.1%
Blue Collar Workers	360 43.1%	4,191 41.8%	12,305 44.9%

#### Consumer Expenditure (2014)

	1 Mile	3 Miles	5 Miles
Total Household Expenditure	\$40.6 M	\$489 M	\$1.33 B
Total Non-Retail Expenditure	\$23.3 M 57.5%	\$281 M 57.4%	\$761 M 57.3%
Total Retail Expenditure	\$17.3 M 42.5%	\$208 M 42.6%	\$568 M 42.7%
Apparel	\$1.92 M 4.7%	\$23.3 M 4.8%	\$63.4 M 4.8%
Contributions	\$1.44 M 3.6%	\$17.7 M 3.6%	\$47.2 M 3.6%
Education	\$912 K 2.2%	\$11.1 M 2.3%	\$30.1 M 2.3%
Entertainment	\$2.26 M 5.6%	\$27.3 M 5.6%	\$73.7 M 5.5%
Food and Beverages	\$6.25 M 15.4%	\$75.5 M 15.4%	\$207 M 15.6%
Furnishings and Equipment	\$1.78 M 4.4%	\$21.3 M 4.4%	\$56.9 M 4.3%
Gifts	\$1.05 M 2.6%	\$12.7 M 2.6%	\$34.0 M 2.6%
Health Care	\$2.54 M 6.3%	\$30.7 M 6.3%	\$84.5 M 6.4%
Household Operations	\$1.41 M 3.5%	\$17.1 M 3.5%	\$45.8 M 3.4%
Miscellaneous Expenses	\$684 K 1.7%	\$8.25 M 1.7%	\$22.6 M 1.7%
Personal Care	\$589 K 1.5%	\$7.11 M 1.5%	\$19.4 M 1.5%
Personal Insurance	\$401 K 1.0%	\$4.88 M 1.0%	\$13.0 M 1.0%
Reading	\$134 K 0.3%	\$1.61 M 0.3%	\$4.38 M 0.3%
Shelter	\$7.82 M 19.3%	\$94.2 M 19.3%	\$256 M 19.2%
Tobacco	\$271 K 0.7%	\$3.30 M 0.7%	\$9.28 M 0.7%
Transportation	\$8.26 M 20.4%	\$98.7 M 20.2%	\$267 M 20.1%
Utilities	\$2.85 M 7.0%	\$34.6 M 7.1%	\$95.6 M 7.2%

#### Educational Attainment (2014)

	1 Mile	3 Miles	5 Miles
Adult Population Age 25 Years or Over	1,334	15,789	46,035
Elementary (Grade Level 0 to 8)	16 1.2%	358 2.3%	1,561 3.4%
Some High School (Grade Level 9 to 11)	102 7.6%	1,018 6.4%	4,051 8.8%
High School Graduate	489 36.7%	6,432 40.7%	18,971 41.2%
Some College	362 27.1%	3,147 19.9%	9,308 20.2%
Associate Degree Only	89 6.7%	1,075 6.8%	2,853 6.2%
Bachelor Degree Only	220 16.5%	2,528 16.0%	6,005 13.0%
Graduate Degree	56 4.2%	1,232 7.8%	3,287 7.1%

This report was produced using data from private and government sources deemed to be reliable. The information herein is provided without representation or warranty.

# EXPANDED PROFILE

2000-2010 Census, 2014 Estimates with 2019 Projections

Calculated using Proportional Block Groups

Lat/Lon: 41.1842/-80.6724

RF5

1690 Tibbets Wick Girard, OH	1 Mile		3 Miles		5 Miles	
<b>Units In Structure (2010)</b>						
1 Detached Unit	630	80.7%	7,245	76.2%	20,832	72.7%
1 Attached Unit	40	5.2%	268	2.8%	932	3.3%
2 to 4 Units	38	4.9%	540	5.7%	1,978	6.9%
5 to 9 Units	1	0.1%	373	3.9%	1,288	4.5%
10 to 19 Units	30	3.8%	384	4.0%	905	3.2%
20 to 49 Units	-	0.1%	126	1.3%	616	2.1%
50 or More Units	4	0.5%	264	2.8%	1,068	3.7%
Mobile Home or Trailer	38	4.8%	308	3.2%	1,037	3.6%
Other Structure	-	-	-	-	-	-
<b>Homes Built By Year (2010)</b>						
Homes Built 2005 or later	18	2.3%	185	1.9%	646	2.3%
Homes Built 2000 to 2004	77	9.9%	452	4.8%	1,141	4.0%
Homes Built 1990 to 1999	76	9.8%	920	9.7%	2,634	9.2%
Homes Built 1980 to 1989	58	7.4%	667	7.0%	2,051	7.2%
Homes Built 1970 to 1979	121	15.5%	1,630	17.1%	4,710	16.4%
Homes Built 1960 to 1969	173	22.1%	1,434	15.1%	3,754	13.1%
Homes Built 1950 to 1959	125	16.0%	1,910	20.1%	5,317	18.6%
Homes Built Before 1949	132	16.9%	2,309	24.3%	8,402	29.3%
<b>Home Values (2010)</b>						
Home Values \$1,000,000 or More	2	0.3%	33	0.5%	66	0.3%
Home Values \$500,000 to \$999,999	7	1.2%	76	1.1%	222	1.2%
Home Values \$400,000 to \$499,999	2	0.3%	71	1.0%	144	0.8%
Home Values \$300,000 to \$399,999	16	2.6%	209	3.0%	458	2.4%
Home Values \$200,000 to \$299,999	89	14.0%	690	10.0%	1,565	8.1%
Home Values \$150,000 to \$199,999	99	15.7%	1,063	15.5%	2,404	12.5%
Home Values \$100,000 to \$149,999	178	28.1%	1,643	23.9%	4,136	21.5%
Home Values \$70,000 to \$99,999	145	23.0%	1,801	26.2%	4,954	25.8%
Home Values \$50,000 to \$69,999	45	7.1%	687	10.0%	2,198	11.4%
Home Values \$25,000 to \$49,999	20	3.2%	316	4.6%	1,538	8.0%
Home Values Under \$25,000	28	4.5%	279	4.1%	1,534	8.0%
Owner-Occupied Median Home Value	\$128,892		\$120,806		\$104,239	
Renter-Occupied Median Rent	\$451		\$479		\$459	
<b>Transportation To Work (2010)</b>						
Drive to Work Alone	715	88.2%	8,855	90.0%	23,509	87.5%
Drive to Work in Carpool	85	10.5%	629	6.4%	1,748	6.5%
Travel to Work by Public Transportation	2	0.2%	31	0.3%	280	1.0%
Drive to Work on Motorcycle	-	-	8	0.1%	11	-
Walk or Bicycle to Work	2	0.3%	119	1.2%	531	2.0%
Other Means	-	-	20	0.2%	190	0.7%
Work at Home	6	0.8%	181	1.8%	588	2.2%
<b>Travel Time (2010)</b>						
Travel to Work in 14 Minutes or Less	237	29.5%	3,508	36.3%	10,104	38.5%
Travel to Work in 15 to 29 Minutes	437	54.3%	4,413	45.7%	11,251	42.8%
Travel to Work in 30 to 59 Minutes	68	8.5%	1,150	11.9%	3,451	13.1%
Travel to Work in 60 Minutes or More	62	7.7%	590	6.1%	1,463	5.6%
Average Minutes Travel to Work	18.4		17.2		17.1	

This report was produced using data from private and government sources deemed to be reliable. The information herein is provided without representation or warranty.