

# COCCA DEVELOPMENT

## RETAIL SPACE FOR LEASE

**615 WALNUT STREET**

EAST LIVERPOOL, OH 43920



- Join Dollar General in prime retail space in East Liverpool
- Conveniently located near Rite Aid, True Value, & Auto Zone
- Front door parking; wide frontage on tenant space
- Easy ingress & egress on Walnut Street

### AVAILABLE SUITE AREA—\$6/square foot NNN:

Approximately 4,500 square feet\*

\*Can be reduced per space needs

NNN: Base rent plus prorata share of Real Estate Taxes, Insurance, and Common Area expenses, including but not limited to snow removal, lawn care, and parking lot maintenance. Tenant pays separately metered utilities for gas, electric, water, sewer, & trash removal.

**CALL 330-729-1010 FOR MORE INFORMATION**

[www.coccadevelopment.com](http://www.coccadevelopment.com)

POTTERS LANE 16' RW

108'-10 1/2"

APPLE ALLEY 16' RW

186'-5 1/2"

WALNUT STREET 60' RW

158'-4 3/4"

PARKING LOT PAVEMENT  
GOES TO EDGE OF ROAD  
ALONG WALNUT STREET

DELIVERY  
DOORS

EXISTING  
ASPHALT PAVING

EXISTING  
ASPHALT PAVING

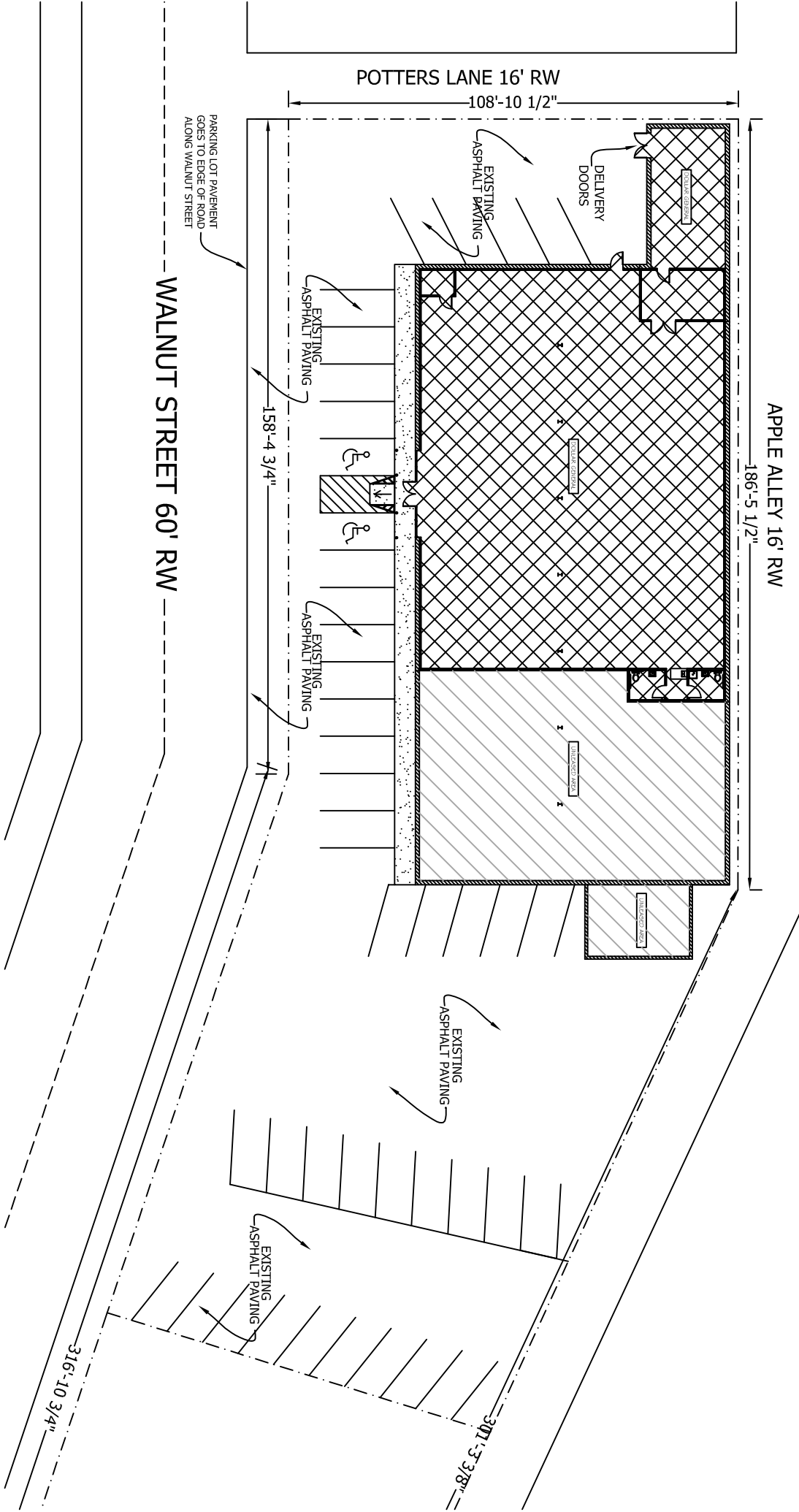
EXISTING  
ASPHALT PAVING

EXISTING  
ASPHALT PAVING

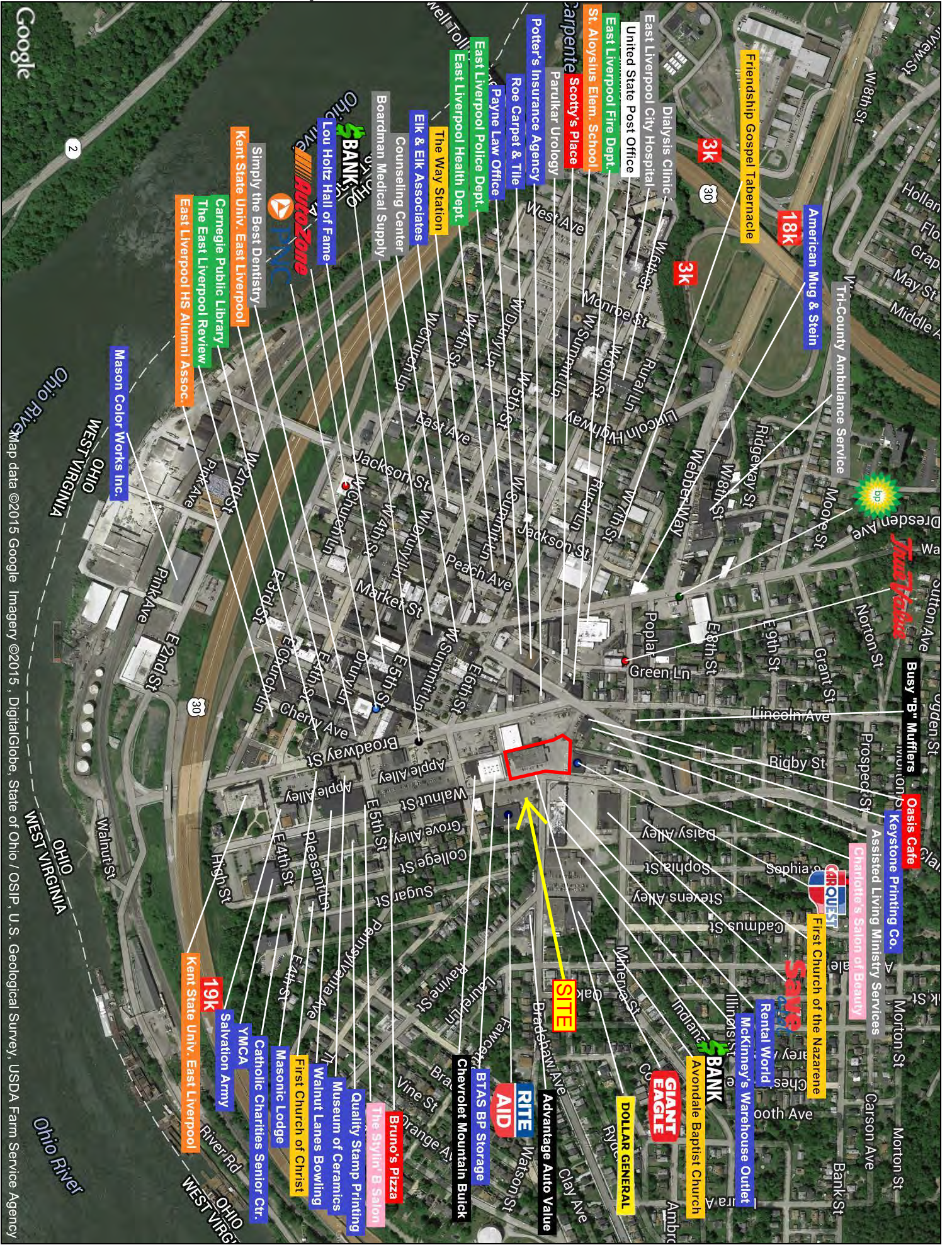
EXISTING  
ASPHALT PAVING

316'-10 3/4"

301'-3 3/8"







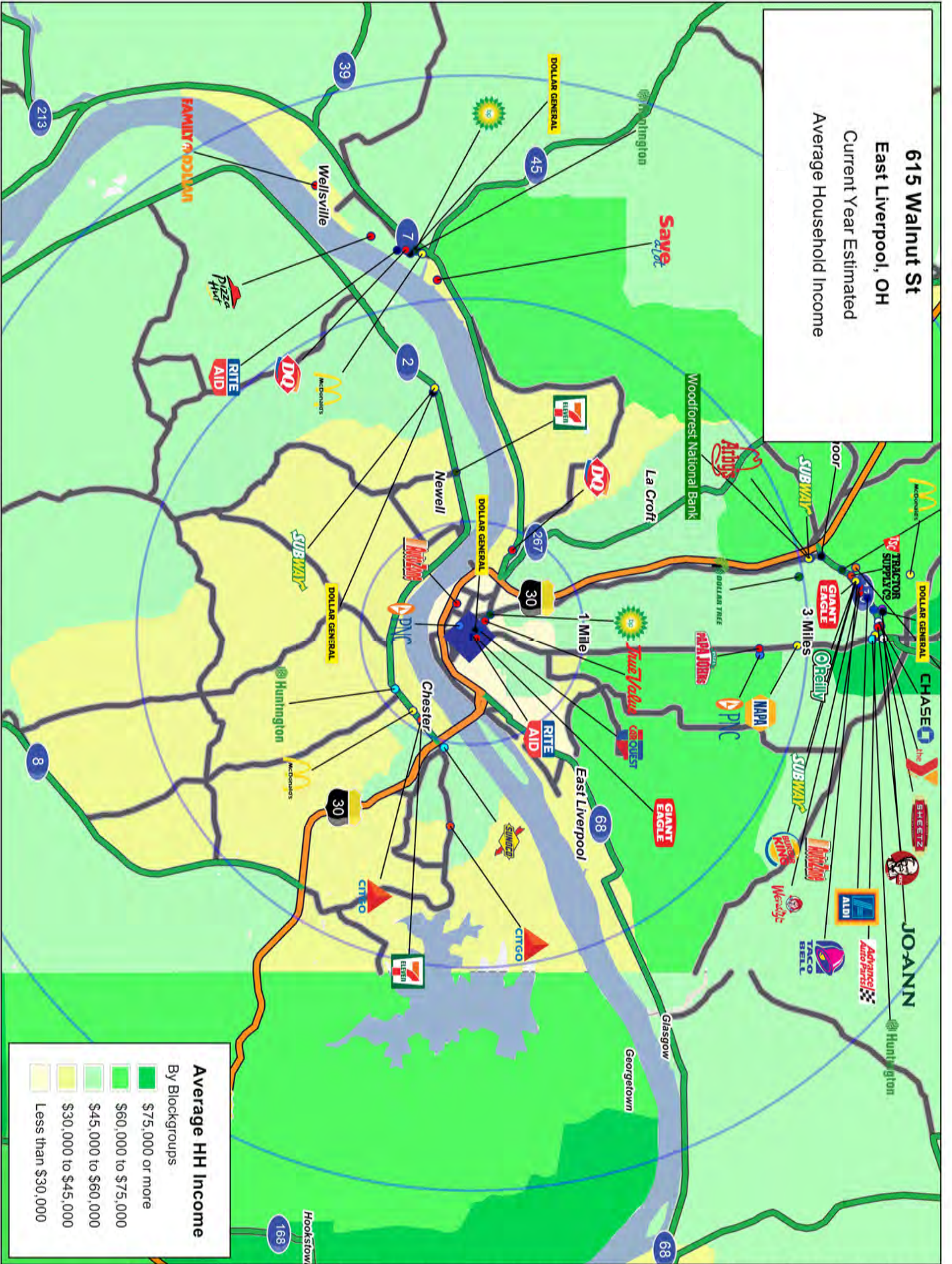
Google

2

This map was produced using data from private and government sources deemed to be reliable. The information herein is provided without representation or warranty.



**615 Walnut St**  
**East Liverpool, OH**  
 Current Year Estimated  
 Average Household Income



**Average HH Income**  
 By Blockgroups

- \$75,000 or more
- \$60,000 to \$75,000
- \$45,000 to \$60,000
- \$30,000 to \$45,000
- Less than \$30,000

This map was produced using data from private and government sources deemed to be reliable. The information herein is provided without representation or warranty.



# 615 Walnut Street East Liverpool, OH 43920

The site is ideally located on Walnut Street, approximately one mile from US-30. The average daily traffic count on Walnut St. in front of the center is approximately 1,000.



1

East Liverpool offers the charm and comfort of small town life with the easy access to larger cities.



# COCCA DEVELOPMENT, LTD

**615 Walnut Street**

**East Liverpool, OH 43920**

## **AT A GLANCE**

- ◆ East Liverpool is a city in Columbiana County, Ohio. It is located along the Ohio River and borders the states of Pennsylvania and West Virginia. East Liverpool is a major city in the Salem, Ohio Metropolitan Statistical Area, which includes all of Columbiana County
- ◆ Historically referred to as the “Pottery Capital of the World” due to the large number of potteries in the city
- ◆ Also known as the hometown of former University of Notre Dame football coach Lou Holtz
- ◆ As of 1914, East Liverpool was served by the Cleveland and Pittsburgh Railroad
- ◆ Ideally located 1 hour west of Pittsburgh and 2 hours south of Cleveland.

# GRAPHIC PROFILE

2000-2010 Census, 2014 Estimates with 2019 Projections

Calculated using Proportional Block Groups

Lat/Lon: 40.6203/-80.5769

RGRAP3

## 615 Walnut St

## East Liverpool, OH

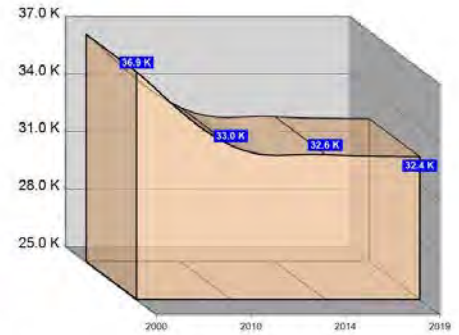
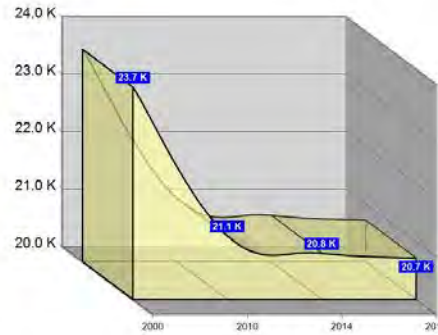
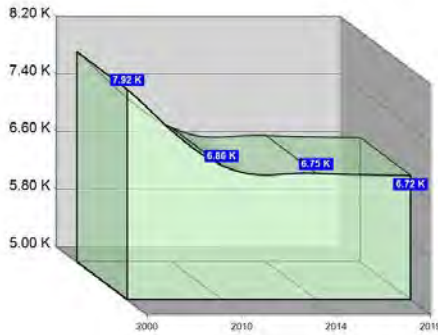
1 Mile

3 Miles

5 Miles

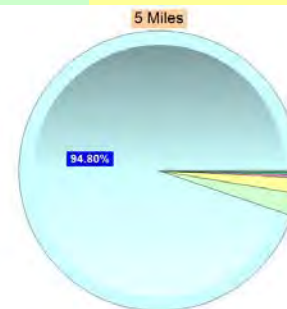
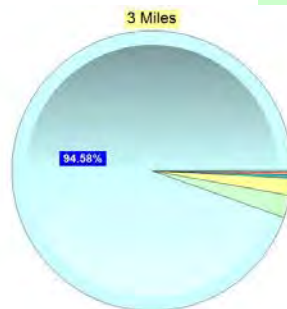
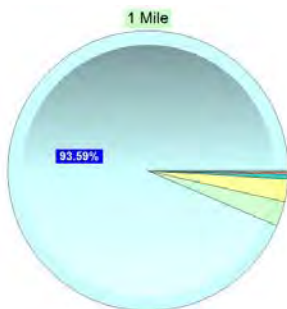
### Population

Estimated Population (2014)	6,755	20,802	32,558
Projected Population (2019)	6,725	20,717	32,441
Census Population (2010)	6,863	21,103	33,035
Census Population (2000)	7,924	23,696	36,869
Projected Annual Growth (2014-2019)	-30 -0.1%	-86 -0.1%	-117 -0.1%
Historical Annual Growth (2010-2014)	-108 -3.9%	-301 -3.1%	-477 -2.9%
Historical Annual Growth (2000-2010)	-1,061 -1.3%	-2,592 -1.1%	-3,834 -1.0%
Estimated Population Density (2014)	2,152 <i>psm</i>	736 <i>psm</i>	415 <i>psm</i>
Trade Area Size	3.1 <i>sq mi</i>	28.3 <i>sq mi</i>	78.5 <i>sq mi</i>



### Race and Ethnicity (2014)

Not Hispanic or Latino Population	6,646	98.4%	20,555	98.8%	32,207	98.9%
White	6,261	94.2%	19,519	95.0%	30,643	95.1%
Black or African American	191	2.9%	540	2.6%	835	2.6%
American Indian or Alaska Native	10	0.1%	29	0.1%	43	0.1%
Asian	15	0.2%	61	0.3%	97	0.3%
Hawaiian or Pacific Islander	1	-	2	-	4	-
Other Race	5	0.1%	14	0.1%	24	0.1%
Two or More Races	163	2.5%	390	1.9%	561	1.7%
Hispanic or Latino Population	108	1.6%	248	1.2%	351	1.1%
White	60	55.5%	156	62.9%	222	63.2%
Black or African American	1	1.0%	2	0.7%	5	1.3%
American Indian or Alaska Native	-	0.2%	3	1.3%	8	2.2%
Asian	-	0.2%	5	1.8%	6	1.6%
Hispanic Hawaiian or Pacific Islander	-	-	-	0.1%	4	1.0%
Other Race	34	30.9%	61	24.6%	76	21.6%
Two or More Races	13	12.3%	21	8.5%	31	8.9%



White Black or African American American Indian or Alaska Native Asian Hawaiian or Pacific Islander Other Race 2+ Races

This report was produced using data from private and government sources deemed to be reliable. The information herein is provided without representation or warranty.

# GRAPHIC PROFILE

2000-2010 Census, 2014 Estimates with 2019 Projections

Calculated using Proportional Block Groups

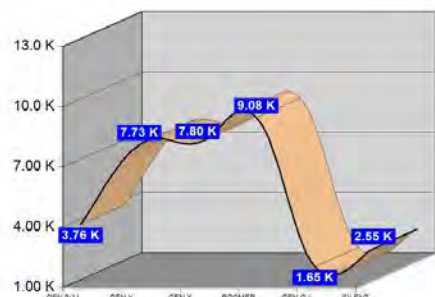
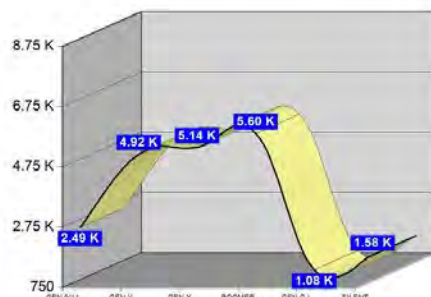
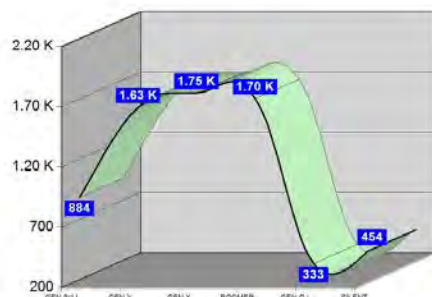
Lat/Lon: 40.6203/-80.5769

RGRAP3

## 615 Walnut St East Liverpool, OH

	1 Mile		3 Miles		5 Miles	
<b>Age Distribution (2014)</b>						
Age Under 5 Years	468	6.9%	1,275	6.1%	1,883	5.8%
Age 5 to 9 Years	415	6.1%	1,210	5.8%	1,873	5.8%
Age 10 to 14 Years	439	6.5%	1,349	6.5%	2,111	6.5%
Age 15 to 19 Years	458	6.8%	1,338	6.4%	2,039	6.3%
Age 20 to 24 Years	470	7.0%	1,330	6.4%	1,940	6.0%
Age 25 to 29 Years	381	5.6%	1,122	5.4%	1,706	5.2%
Age 30 to 34 Years	410	6.1%	1,192	5.7%	1,817	5.6%
Age 35 to 39 Years	390	5.8%	1,159	5.6%	1,830	5.6%
Age 40 to 44 Years	406	6.0%	1,242	6.0%	1,964	6.0%
Age 45 to 49 Years	426	6.3%	1,326	6.4%	2,119	6.5%
Age 50 to 54 Years	455	6.7%	1,512	7.3%	2,459	7.6%
Age 55 to 59 Years	471	7.0%	1,542	7.4%	2,531	7.8%
Age 60 to 64 Years	456	6.8%	1,441	6.9%	2,303	7.1%
Age 65 to 69 Years	320	4.7%	1,110	5.3%	1,783	5.5%
Age 70 to 74 Years	259	3.8%	859	4.1%	1,415	4.3%
Age 75 to 79 Years	195	2.9%	720	3.5%	1,136	3.5%
Age 80 to 84 Years	154	2.3%	535	2.6%	825	2.5%
Age 85 Years or Over	179	2.7%	542	2.6%	821	2.5%
Median Age	38.2		40.6		41.6	

	1 Mile		3 Miles		5 Miles	
<b>Generation (2014)</b>						
Generation 9/11 Millennials (Age Under 10 Years)	884	13.1%	2,485	11.9%	3,757	11.5%
Gen Y to Echo Boomers (Age 10 to 29 Years)	1,749	25.9%	5,138	24.7%	7,797	23.9%
Gen Xers (Age 30 to 49 Years)	1,632	24.2%	4,919	23.6%	7,730	23.7%
Baby Boomers (Age 50 to 69 Years)	1,703	25.2%	5,604	26.9%	9,076	27.9%
Silent Generation (Age 70 to 79 Years)	454	6.7%	1,579	7.6%	2,551	7.8%
G.I. Generation (Age 80 Years or Over)	333	4.9%	1,076	5.2%	1,647	5.1%



This report was produced using data from private and government sources deemed to be reliable. The information herein is provided without representation or warranty.



# GRAPHIC PROFILE

2000-2010 Census, 2014 Estimates with 2019 Projections

Calculated using Proportional Block Groups

Lat/Lon: 40.6203/-80.5769

RGRAP3

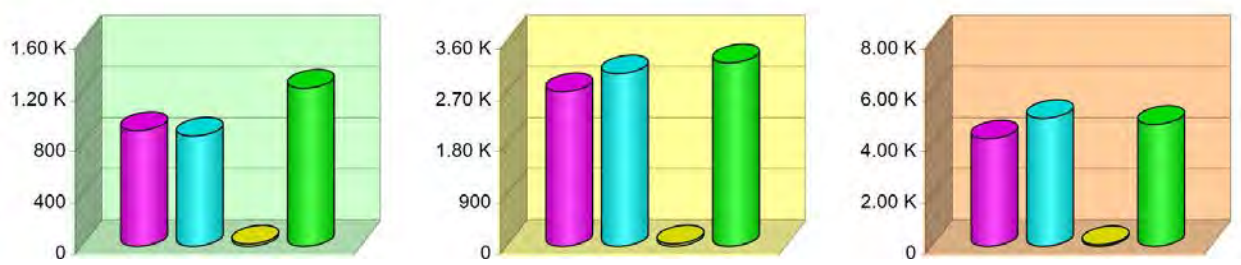
## 615 Walnut St East Liverpool, OH

1 Mile      3 Miles      5 Miles

### Household Type (2014)

	1 Mile	3 Miles	5 Miles
Total Households	3,021	9,026	14,039
Family Households	1,767 28.5%	5,755 33.6%	9,202 35.6%
Family Households with Children	905 51.2%	2,718 47.2%	4,199 45.6%
Family Households No Children	862 48.8%	3,036 52.8%	5,003 54.4%
Non-Family Households	1,254 28.5%	3,272 33.6%	4,837 35.6%
Non-Family Households with Children	18 1.4%	44 1.3%	67 1.4%
Non-Family Households No Children	1,236 98.6%	3,228 98.7%	4,770 98.6%

- Family Households with Children
- Family Households No Children
- Non-Family Households with Children
- Non-Family Households No Children



### Education Attainment (2014)

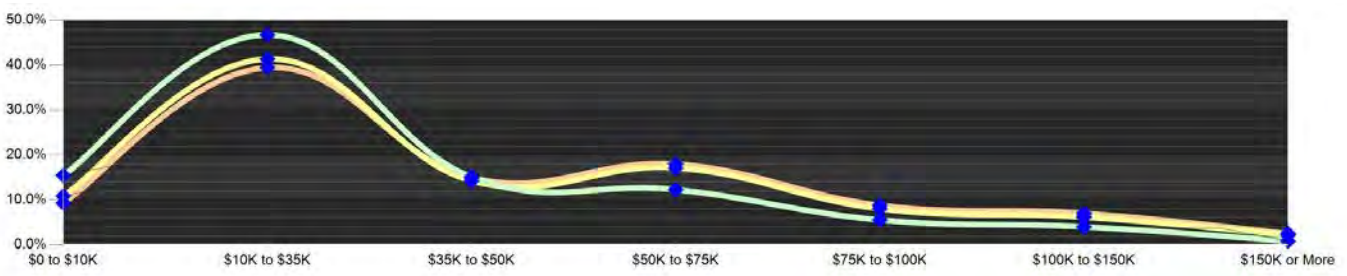
	1 Mile	3 Miles	5 Miles
Elementary or Some High School	955 21.5%	2,537 18.1%	3,705 16.5%
High School Graduate	1,943 43.8%	6,370 45.3%	10,253 45.7%
Some College or Associate Degree	1,205 27.2%	3,933 28.0%	6,327 28.2%
Bachelor or Graduate Degree	332 7.5%	1,210 8.6%	2,126 9.5%

- Elementary or Some High School
- High School Graduate
- Some College or Associate Degree
- Bachelor or Graduate Degree



### Household Income (2014)

	1 Mile	3 Miles	5 Miles
Estimated Average Household Income	\$32,246	\$39,664	\$42,589
Estimated Median Household Income	\$26,106	\$31,930	\$34,704
HH Income Under \$10,000	468 15.5%	982 10.9%	1,308 9.3%
HH Income \$10,000 to \$34,999	1,412 46.8%	3,736 41.4%	5,541 39.5%
HH Income \$35,000 to \$49,999	456 15.1%	1,286 14.2%	2,098 14.9%
HH Income \$50,000 to \$74,999	371 12.3%	1,547 17.1%	2,522 18.0%
HH Income \$75,000 to \$99,999	121 4.0%	558 6.2%	982 7.0%
HH Income \$100,000 to \$149,999	121 4.0%	558 6.2%	982 7.0%
HH Income \$150,000 or More	25 0.8%	194 2.1%	352 2.5%



This report was produced using data from private and government sources deemed to be reliable. The information herein is provided without representation or warranty.

# EXPANDED PROFILE

2000-2010 Census, 2014 Estimates with 2019 Projections

Calculated using Proportional Block Groups

Lat/Lon: 40.6203/-80.5769

RF5

615 Walnut St East Liverpool, OH	1 Mile	3 Miles	5 Miles
<b>Population</b>			
Estimated Population (2014)	6,755	20,802	32,558
Projected Population (2019)	6,725	20,717	32,441
Census Population (2010)	6,863	21,103	33,035
Census Population (2000)	7,924	23,696	36,869
Projected Annual Growth (2014 to 2019)	-30 -0.1%	-86 -0.1%	-117 -0.1%
Historical Annual Growth (2010 to 2014)	-108 -0.4%	-301 -0.4%	-477 -0.4%
Historical Annual Growth (2000 to 2010)	-1,061 -1.3%	-2,592 -1.1%	-3,834 -1.0%
Estimated Population Density (2014)	2,152 <i>psm</i>	736 <i>psm</i>	415 <i>psm</i>
Trade Area Size	3.14 <i>sq mi</i>	28.26 <i>sq mi</i>	78.49 <i>sq mi</i>
<b>Households</b>			
Estimated Households (2014)	3,021	9,026	14,039
Projected Households (2019)	3,067	9,165	14,259
Census Households (2010)	2,980	8,904	13,846
Census Households (2000)	3,282	9,670	14,917
Estimated Households with Children (2014)	923 30.6%	2,762 30.6%	4,266 30.4%
Estimated Average Household Size (2014)	2.21	2.27	2.30
<b>Average Household Income</b>			
Estimated Average Household Income (2014)	\$34,064	\$43,622	\$47,618
Projected Average Household Income (2019)	\$36,986	\$47,167	\$51,516
Estimated Average Family Income (2014)	\$42,823	\$53,424	\$58,217
<b>Median Household Income</b>			
Estimated Median Household Income (2014)	\$27,332	\$35,384	\$38,123
Projected Median Household Income (2019)	\$29,795	\$38,220	\$41,223
Estimated Median Family Income (2014)	\$37,188	\$45,083	\$47,609
<b>Per Capita Income</b>			
Estimated Per Capita Income (2014)	\$15,307	\$19,029	\$20,609
Projected Per Capita Income (2019)	\$16,949	\$20,979	\$22,727
Estimated Per Capita income 5 Year Growth	\$1,642 10.7%	\$1,950 10.2%	\$2,119 10.3%
Estimated Average Household Net Worth (2014)	\$243,534	\$290,097	\$307,485
<b>Daytime Demos (2014)</b>			
Total Businesses	411	828	1,225
Total Employees	3,816	9,297	12,618
Company Headquarter Businesses	2 0.5%	7 0.9%	10 0.8%
Company Headquarter Employees	52 1.4%	196 2.1%	357 2.8%
Employee Population per Business	9.3	11.2	10.3
Residential Population per Business	16.4	25.1	26.6

This report was produced using data from private and government sources deemed to be reliable. The information herein is provided without representation or warranty.



# EXPANDED PROFILE

2000-2010 Census, 2014 Estimates with 2019 Projections

Calculated using Proportional Block Groups

Lat/Lon: 40.6203/-80.5769

RF5

615 Walnut St		1 Mile		3 Miles		5 Miles	
East Liverpool, OH							
<b>Race &amp; Ethnicity</b>							
White (2014)	6,321	93.6%	19,675	94.6%	30,865	94.8%	
Black or African American (2014)	192	2.8%	541	2.6%	839	2.6%	
American Indian or Alaska Native (2014)	10	0.1%	33	0.2%	51	0.2%	
Asian (2014)	15	0.2%	66	0.3%	102	0.3%	
Hawaiian or Pacific Islander (2014)	1	-	2	-	8	-	
Other Race (2014)	38	0.6%	75	0.4%	100	0.3%	
Two or More Races (2014)	177	2.6%	411	2.0%	593	1.8%	
Not Hispanic or Latino Population (2014)	6,646	98.4%	20,555	98.8%	32,207	98.9%	
Hispanic or Latino Population (2014)	108	1.6%	248	1.2%	351	1.1%	
Not Hispanic or Latino Population (2019)	6,598	98.1%	20,428	98.6%	32,031	98.7%	
Hispanic or Latino Population (2019)	127	1.9%	289	1.4%	410	1.3%	
Not Hispanic or Latino Population (2010)	6,768	98.6%	20,887	99.0%	32,729	99.1%	
Hispanic or Latino Population (2010)	95	1.4%	217	1.0%	306	0.9%	
Not Hispanic or Latino Population (2000)	7,860	99.2%	23,532	99.3%	36,625	99.3%	
Hispanic or Latino Population (2000)	63	0.8%	164	0.7%	244	0.7%	
Projected Hispanic Annual Growth (2014 to 2019)	18	3.4%	41	3.3%	59	3.4%	
Historic Hispanic Annual Growth (2000 to 2014)	45	5.1%	84	3.7%	106	3.1%	
<b>Age Distribution (2014)</b>							
Age Under 5	468	6.9%	1,275	6.1%	1,883	5.8%	
Age 5 to 9 Years	415	6.1%	1,210	5.8%	1,873	5.8%	
Age 10 to 14 Years	439	6.5%	1,349	6.5%	2,111	6.5%	
Age 15 to 19 Years	458	6.8%	1,338	6.4%	2,039	6.3%	
Age 20 to 24 Years	470	7.0%	1,330	6.4%	1,940	6.0%	
Age 25 to 29 Years	381	5.6%	1,122	5.4%	1,706	5.2%	
Age 30 to 34 Years	410	6.1%	1,192	5.7%	1,817	5.6%	
Age 35 to 39 Years	390	5.8%	1,159	5.6%	1,830	5.6%	
Age 40 to 44 Years	406	6.0%	1,242	6.0%	1,964	6.0%	
Age 45 to 49 Years	426	6.3%	1,326	6.4%	2,119	6.5%	
Age 50 to 54 Years	455	6.7%	1,512	7.3%	2,459	7.6%	
Age 55 to 59 Years	471	7.0%	1,542	7.4%	2,531	7.8%	
Age 60 to 64 Years	456	6.8%	1,441	6.9%	2,303	7.1%	
Age 65 to 74 Years	579	8.6%	1,969	9.5%	3,199	9.8%	
Age 75 to 84 Years	349	5.2%	1,254	6.0%	1,961	6.0%	
Age 85 Years or Over	179	2.7%	542	2.6%	821	2.5%	
Median Age	38.2		40.6		41.6		
<b>Gender Age Distribution (2014)</b>							
Female Population	3,522	52.1%	10,814	52.0%	16,832	51.7%	
Age 0 to 19 Years	866	24.6%	2,541	23.5%	3,898	23.2%	
Age 20 to 64 Years	1,981	56.3%	6,081	56.2%	9,510	56.5%	
Age 65 Years or Over	675	19.2%	2,193	20.3%	3,424	20.3%	
Female Median Age	39.6		42.0		43.0		
Male Population	3,233	47.9%	9,988	48.0%	15,726	48.3%	
Age 0 to 19 Years	915	28.3%	2,631	26.3%	4,009	25.5%	
Age 20 to 64 Years	1,885	58.3%	5,785	57.9%	9,159	58.2%	
Age 65 Years or Over	432	13.4%	1,572	15.7%	2,557	16.3%	
Male Median Age	36.5		39.1		40.2		

This report was produced using data from private and government sources deemed to be reliable. The information herein is provided without representation or warranty.

# EXPANDED PROFILE

2000-2010 Census, 2014 Estimates with 2019 Projections

Calculated using Proportional Block Groups

Lat/Lon: 40.6203/-80.5769

RF5

## 615 Walnut St

### East Liverpool, OH

#### Household Income Distribution (2014)

	1 Mile		3 Miles		5 Miles	
HH Income \$200,000 or More	5	0.2%	62	0.7%	133	0.9%
HH Income \$150,000 to \$199,999	20	0.7%	132	1.5%	219	1.6%
HH Income \$100,000 to \$149,999	121	4.0%	558	6.2%	982	7.0%
HH Income \$75,000 to \$99,999	167	5.5%	724	8.0%	1,236	8.8%
HH Income \$50,000 to \$74,999	371	12.3%	1,547	17.1%	2,522	18.0%
HH Income \$35,000 to \$49,999	456	15.1%	1,286	14.2%	2,098	14.9%
HH Income \$25,000 to \$34,999	465	15.4%	1,485	16.5%	2,243	16.0%
HH Income \$15,000 to \$24,999	632	20.9%	1,587	17.6%	2,375	16.9%
HH Income Under \$15,000	782	25.9%	1,646	18.2%	2,232	15.9%
HH Income \$35,000 or More	1,141	37.8%	4,309	47.7%	7,190	51.2%
HH Income \$75,000 or More	313	10.4%	1,476	16.4%	2,570	18.3%

#### Housing (2014)

	1 Mile		3 Miles		5 Miles	
Total Housing Units	3,496		10,009		15,480	
Housing Units Occupied	3,021	86.4%	9,026	90.2%	14,039	90.7%
Housing Units Owner-Occupied	1,487	49.2%	5,731	63.5%	9,528	67.9%
Housing Units, Renter-Occupied	1,534	50.8%	3,295	36.5%	4,511	32.1%
Housing Units, Vacant	475	13.6%	982	9.8%	1,441	9.3%

#### Marital Status (2014)

	1 Mile		3 Miles		5 Miles	
Never Married	1,488	27.4%	4,326	25.5%	6,208	23.3%
Currently Married	2,164	39.8%	7,586	44.7%	13,075	49.0%
Separated	445	8.2%	875	5.2%	1,213	4.5%
Widowed	547	10.1%	1,718	10.1%	2,507	9.4%
Divorced	787	14.5%	2,463	14.5%	3,687	13.8%

#### Household Type (2014)

	1 Mile		3 Miles		5 Miles	
Population Family	5,112	75.7%	16,296	78.3%	25,967	79.8%
Population Non-Family	1,570	23.2%	4,238	20.4%	6,270	19.3%
Population Group Quarters	72	1.1%	268	1.3%	320	1.0%
Family Households	1,767	58.5%	5,755	63.8%	9,202	65.5%
Non-Family Households	1,254	41.5%	3,272	36.2%	4,837	34.5%
Married Couple with Children	411	19.0%	1,412	18.6%	2,323	17.8%
Average Family Household Size	2.9		2.8		2.8	

#### Household Size (2014)

	1 Mile		3 Miles		5 Miles	
1 Person Households	1,104	36.5%	2,801	31.0%	4,136	29.5%
2 Person Households	905	29.9%	3,069	34.0%	4,928	35.1%
3 Person Households	459	15.2%	1,467	16.2%	2,307	16.4%
4 Person Households	310	10.2%	996	11.0%	1,600	11.4%
5 Person Households	156	5.2%	466	5.2%	717	5.1%
6 or More Person Households	87	2.9%	229	2.5%	350	2.5%

#### Household Vehicles (2014)

	1 Mile		3 Miles		5 Miles	
Households with 0 Vehicles Available	483	16.0%	1,038	11.5%	1,423	10.1%
Households with 1 Vehicles Available	1,380	45.7%	3,567	39.5%	5,210	37.1%
Households with 2 or More Vehicles Available	1,158	38.3%	4,421	49.0%	7,405	52.7%
Total Vehicles Available	4,071		14,139		23,189	
Average Vehicles Per Household	1.3		1.6		1.7	

This report was produced using data from private and government sources deemed to be reliable. The information herein is provided without representation or warranty.



# EXPANDED PROFILE

2000-2010 Census, 2014 Estimates with 2019 Projections

Calculated using Proportional Block Groups

Lat/Lon: 40.6203/-80.5769

RF5

## 615 Walnut St

### East Liverpool, OH

#### Labor Force (2014)

	1 Mile	3 Miles	5 Miles
Estimated Labor Population Age 16 Years or Over	5,266	16,422	25,947
Estimated Civilian Employed	2,445 46.4%	8,282 50.4%	13,320 51.3%
Estimated Civilian Unemployed	263 5.0%	753 4.6%	1,143 4.4%
Estimated in Armed Forces	4 0.1%	14 0.1%	17 0.1%
Estimated Not in Labor Force	2,554 48.5%	7,372 44.9%	11,465 44.2%
Unemployment Rate	5.0%	4.6%	4.4%

#### Occupation (2010)

	1 Mile	3 Miles	5 Miles
Occupation: Population Age 16 Years or Over	2,477	8,189	13,152
Management, Business, Financial Operations	163 6.6%	657 8.0%	1,083 8.2%
Professional, Related	399 16.1%	1,299 15.9%	2,097 15.9%
Service	566 22.9%	1,877 22.9%	2,925 22.2%
Sales, Office	545 22.0%	1,719 21.0%	2,846 21.6%
Farming, Fishing, Forestry	5 0.2%	15 0.2%	28 0.2%
Construct, Extraction, Maintenance	177 7.1%	557 6.8%	1,060 8.1%
Production, Transport Material Moving	622 25.1%	2,064 25.2%	3,114 23.7%
White Collar Workers	1,107 44.7%	3,676 44.9%	6,025 45.8%
Blue Collar Workers	1,370 55.3%	4,513 55.1%	7,127 54.2%

#### Consumer Expenditure (2014)

	1 Mile	3 Miles	5 Miles
Total Household Expenditure	\$104 M	\$361 M	\$593 M
Total Non-Retail Expenditure	\$58.9 M 56.8%	\$206 M 57.1%	\$339 M 57.1%
Total Retail Expenditure	\$44.8 M 43.2%	\$155 M 42.9%	\$254 M 42.9%
Apparel	\$4.95 M 4.8%	\$17.2 M 4.8%	\$28.2 M 4.8%
Contributions	\$3.41 M 3.3%	\$12.3 M 3.4%	\$20.5 M 3.5%
Education	\$2.26 M 2.2%	\$7.86 M 2.2%	\$12.9 M 2.2%
Entertainment	\$5.64 M 5.4%	\$19.8 M 5.5%	\$32.8 M 5.5%
Food and Beverages	\$16.6 M 16.0%	\$56.9 M 15.8%	\$93.2 M 15.7%
Furnishings and Equipment	\$4.20 M 4.1%	\$15.0 M 4.2%	\$24.9 M 4.2%
Gifts	\$2.51 M 2.4%	\$8.98 M 2.5%	\$14.9 M 2.5%
Health Care	\$6.93 M 6.7%	\$23.5 M 6.5%	\$38.5 M 6.5%
Household Operations	\$3.36 M 3.2%	\$12.0 M 3.3%	\$20.0 M 3.4%
Miscellaneous Expenses	\$1.81 M 1.7%	\$6.23 M 1.7%	\$10.2 M 1.7%
Personal Care	\$1.52 M 1.5%	\$5.26 M 1.5%	\$8.64 M 1.5%
Personal Insurance	\$955 K 0.9%	\$3.43 M 1.0%	\$5.69 M 1.0%
Reading	\$340 K 0.3%	\$1.18 M 0.3%	\$1.95 M 0.3%
Shelter	\$19.9 M 19.2%	\$69.2 M 19.2%	\$114 M 19.2%
Tobacco	\$809 K 0.8%	\$2.66 M 0.7%	\$4.32 M 0.7%
Transportation	\$20.6 M 19.8%	\$72.3 M 20.1%	\$119 M 20.1%
Utilities	\$7.89 M 7.6%	\$26.6 M 7.4%	\$43.5 M 7.3%

#### Educational Attainment (2014)

	1 Mile	3 Miles	5 Miles
Adult Population Age 25 Years or Over	4,434	14,051	22,412
Elementary (Grade Level 0 to 8)	285 6.4%	812 5.8%	1,093 4.9%
Some High School (Grade Level 9 to 11)	670 15.1%	1,725 12.3%	2,612 11.7%
High School Graduate	1,943 43.8%	6,370 45.3%	10,253 45.7%
Some College	775 17.5%	2,539 18.1%	4,113 18.4%
Associate Degree Only	430 9.7%	1,395 9.9%	2,214 9.9%
Bachelor Degree Only	182 4.1%	642 4.6%	1,271 5.7%
Graduate Degree	150 3.4%	568 4.0%	856 3.8%

This report was produced using data from private and government sources deemed to be reliable. The information herein is provided without representation or warranty.

# EXPANDED PROFILE

2000-2010 Census, 2014 Estimates with 2019 Projections

Calculated using Proportional Block Groups

Lat/Lon: 40.6203/-80.5769

RF5

## 615 Walnut St

### East Liverpool, OH

#### Units In Structure (2010)

	1 Mile		3 Miles		5 Miles	
1 Detached Unit	1,959	65.7%	6,624	74.4%	10,270	74.2%
1 Attached Unit	96	3.2%	191	2.2%	306	2.2%
2 to 4 Units	411	13.8%	687	7.7%	1,006	7.3%
5 to 9 Units	95	3.2%	186	2.1%	233	1.7%
10 to 19 Units	46	1.5%	169	1.9%	209	1.5%
20 to 49 Units	77	2.6%	135	1.5%	165	1.2%
50 or More Units	222	7.4%	330	3.7%	451	3.3%
Mobile Home or Trailer	75	2.5%	581	6.5%	1,195	8.6%
Other Structure	-	-	-	-	10	0.1%

#### Homes Built By Year (2010)

	1 Mile		3 Miles		5 Miles	
Homes Built 2005 or later	43	1.4%	164	1.8%	312	2.3%
Homes Built 2000 to 2004	56	1.9%	273	3.1%	559	4.0%
Homes Built 1990 to 1999	146	4.9%	524	5.9%	1,009	7.3%
Homes Built 1980 to 1989	265	8.9%	759	8.5%	1,176	8.5%
Homes Built 1970 to 1979	262	8.8%	1,034	11.6%	1,826	13.2%
Homes Built 1960 to 1969	312	10.5%	972	10.9%	1,546	11.2%
Homes Built 1950 to 1959	397	13.3%	1,347	15.1%	2,123	15.3%
Homes Built Before 1949	1,499	50.3%	3,831	43.0%	5,295	38.2%

#### Home Values (2010)

	1 Mile		3 Miles		5 Miles	
Home Values \$1,000,000 or More	3	0.2%	6	0.1%	13	0.1%
Home Values \$500,000 to \$999,999	6	0.4%	12	0.2%	37	0.4%
Home Values \$400,000 to \$499,999	2	0.1%	9	0.2%	29	0.3%
Home Values \$300,000 to \$399,999	14	1.0%	66	1.2%	155	1.7%
Home Values \$200,000 to \$299,999	67	4.6%	260	4.6%	487	5.2%
Home Values \$150,000 to \$199,999	46	3.2%	364	6.5%	839	9.0%
Home Values \$100,000 to \$149,999	163	11.2%	760	13.5%	1,483	15.8%
Home Values \$70,000 to \$99,999	284	19.5%	1,219	21.7%	1,984	21.2%
Home Values \$50,000 to \$69,999	278	19.1%	997	17.7%	1,452	15.5%
Home Values \$25,000 to \$49,999	348	23.9%	1,036	18.4%	1,550	16.6%
Home Values Under \$25,000	246	16.9%	900	16.0%	1,331	14.2%
Owner-Occupied Median Home Value	\$62,656		\$70,845		\$79,608	
Renter-Occupied Median Rent	\$382		\$393		\$398	

#### Transportation To Work (2010)

	1 Mile		3 Miles		5 Miles	
Drive to Work Alone	1,862	77.0%	6,552	81.8%	10,645	82.5%
Drive to Work in Carpool	281	11.6%	853	10.6%	1,390	10.8%
Travel to Work by Public Transportation	79	3.3%	141	1.8%	184	1.4%
Drive to Work on Motorcycle	-	-	1	-	4	-
Walk or Bicycle to Work	126	5.2%	239	3.0%	314	2.4%
Other Means	12	0.5%	95	1.2%	122	0.9%
Work at Home	58	2.4%	132	1.7%	238	1.8%

#### Travel Time (2010)

	1 Mile		3 Miles		5 Miles	
Travel to Work in 14 Minutes or Less	1,132	47.9%	3,588	45.5%	5,065	40.0%
Travel to Work in 15 to 29 Minutes	650	27.5%	2,247	28.5%	3,738	29.5%
Travel to Work in 30 to 59 Minutes	460	19.5%	1,603	20.3%	3,112	24.6%
Travel to Work in 60 Minutes or More	120	5.1%	442	5.6%	743	5.9%
Average Minutes Travel to Work	15.3		15.8		18.0	

This report was produced using data from private and government sources deemed to be reliable. The information herein is provided without representation or warranty.