

COCCA DEVELOPMENT

RETAIL SPACE FOR LEASE

1548 STATE ROUTE 15

DUNCANNON, PA 17020



- Join Dollar General in small center, with Sheetz located in adjacent lot
- Ample parking along side
- Front wall sign
- Great visibility at the intersection of State Route 15 and State Route 11

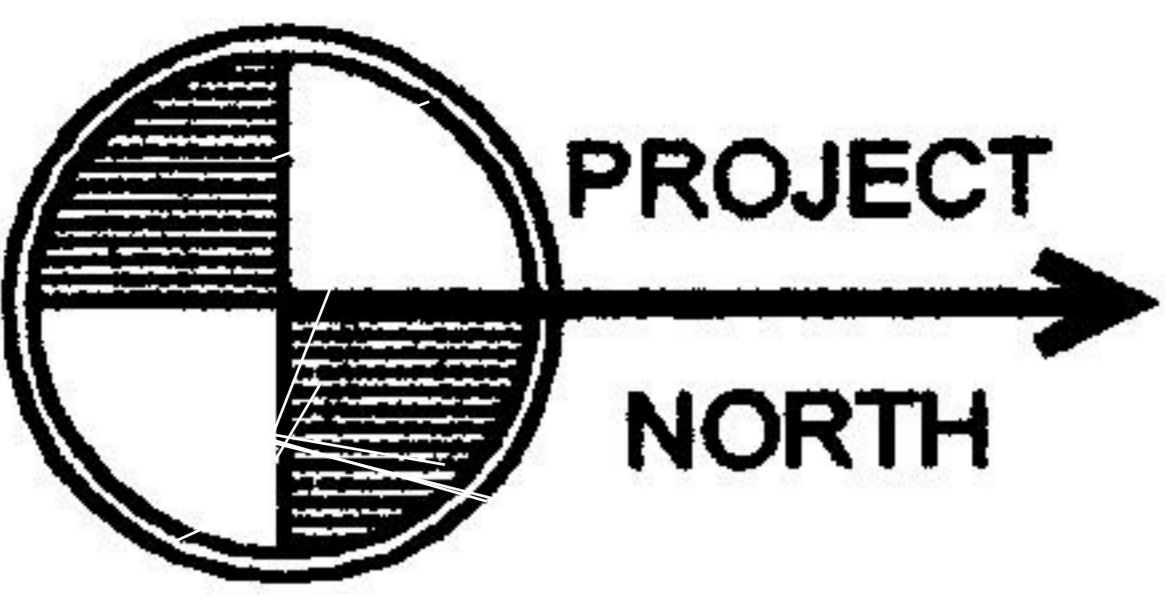
AVAILABLE SUITE AREA—\$10/square foot NNN:

Approximately 2,500 square feet

NNN: Base rent plus prorata share of Real Estate Taxes, Insurance, and Common Area expenses, including but not limited to snow removal, lawn care, and parking lot maintenance. Tenant pays separately metered utilities for gas, electric, water, sewer, and trash removal.

CALL 330-729-1010 FOR MORE INFORMATION

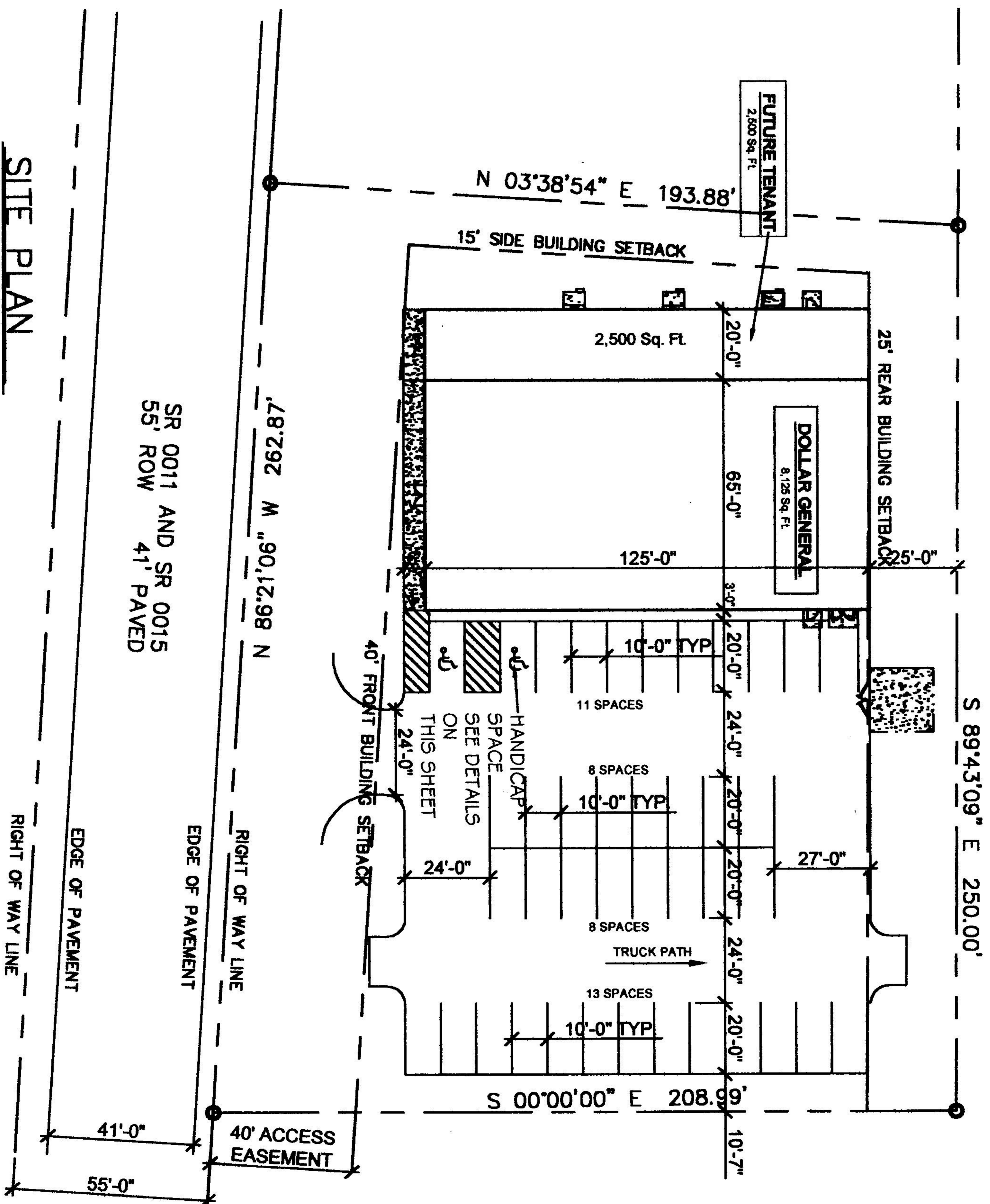
www.coccadevelopment.com



SITE PLAN

SCALE: 1" = 30'-0"

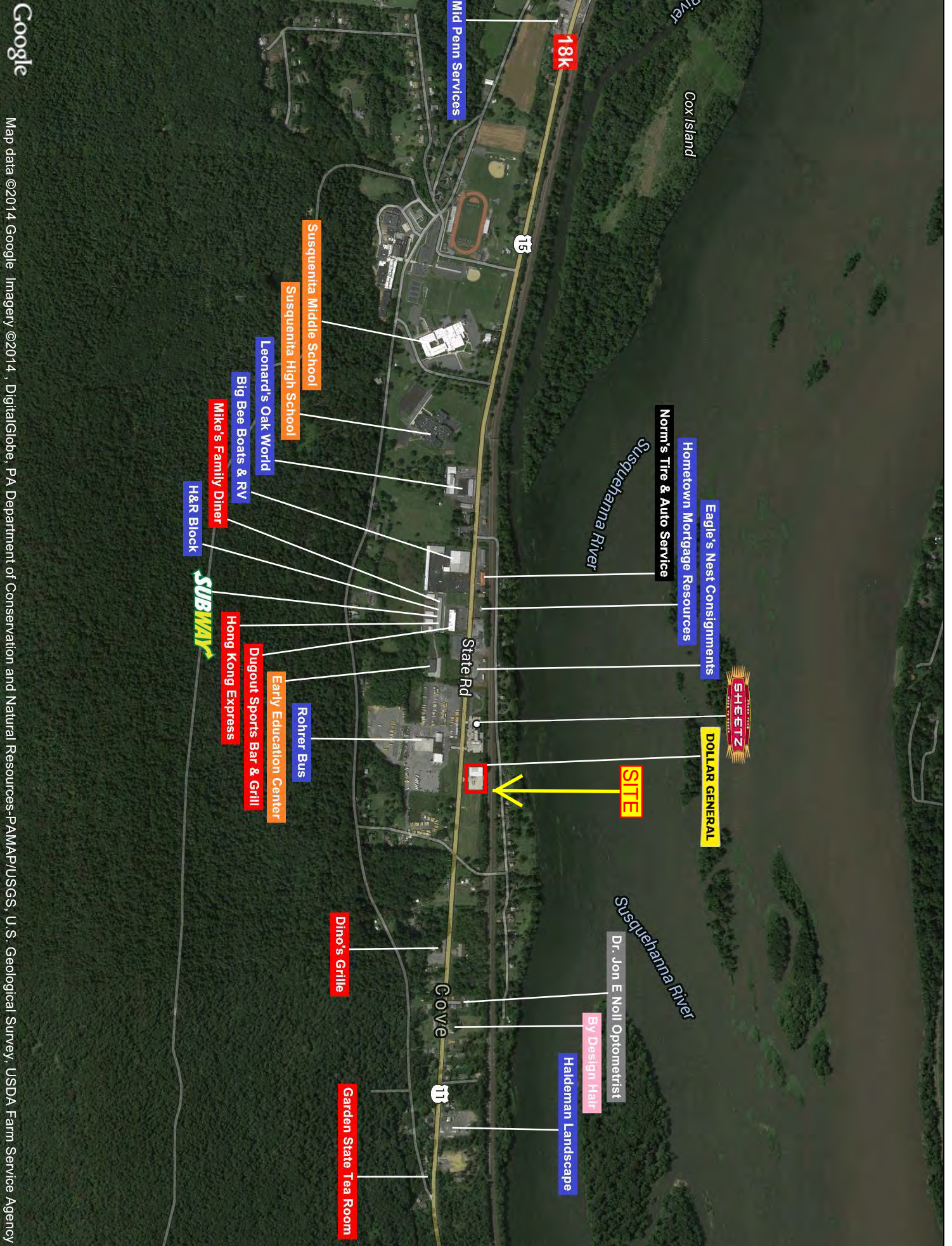
SR 0011 AND SR 0015
55' ROW
41' PAVED



EDGE OF PAVEMENT
RIGHT OF WAY LINE
EDGE OF PAVEMENT
RIGHT OF WAY LINE

41'-0"
55'-0"

40' ACCESS
EASEMENT

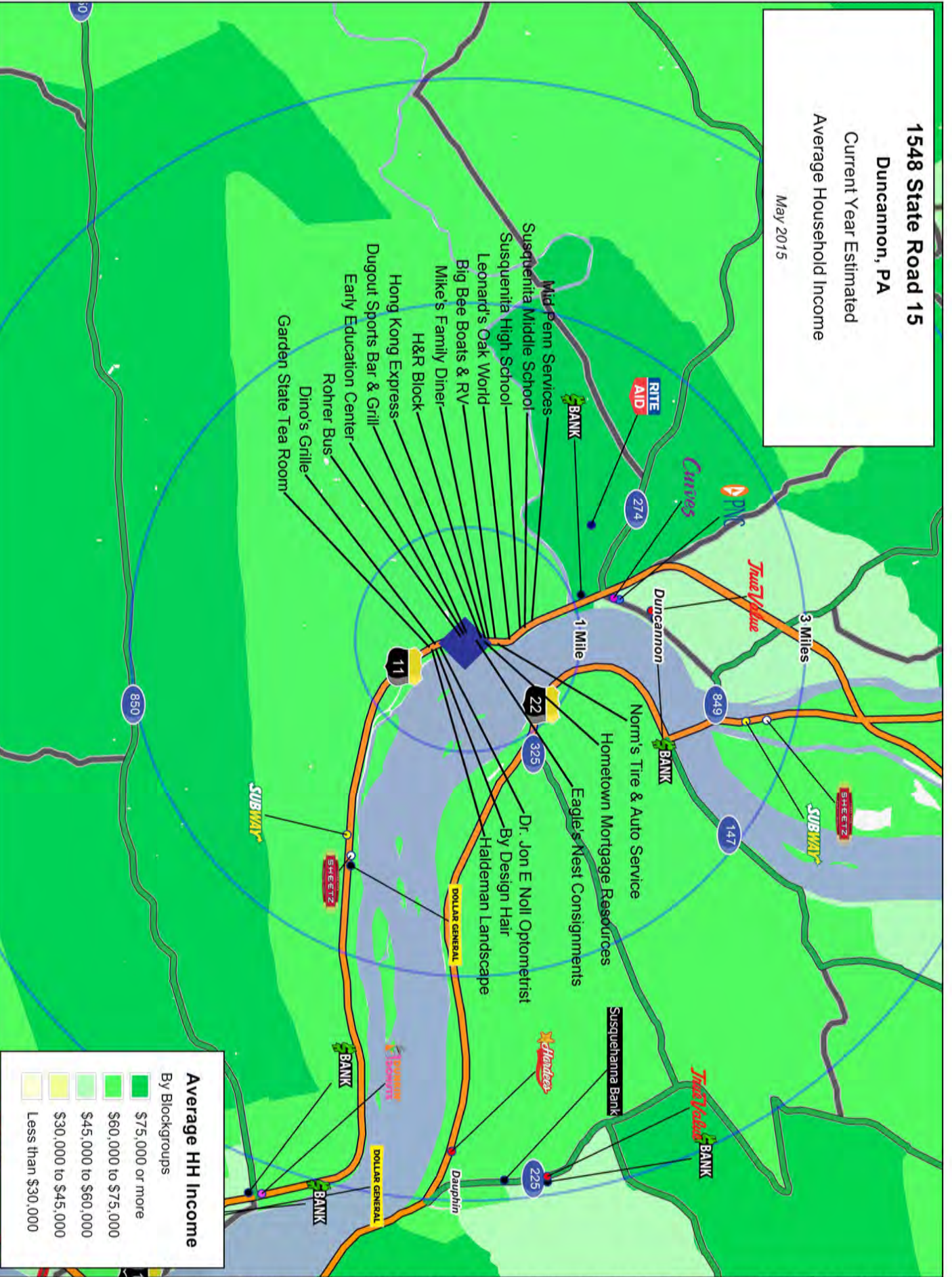


Google

Map data ©2014 Google Imagery ©2014, DigitalGlobe, PA Department of Conservation and Natural Resources-PAMAP/USGS, U.S. Geological Survey, USDA Farm Service Agency
This map was produced using data from private and government sources deemed to be reliable. The information herein is provided without representation or warranty

- 18K
- Mid Penn Services
- Susquehanna Middle School
- Susquehanna High School
- Leonard's Oak World
- Big Bee Boats & RV
- Mike's Family Diner
- H&R Block
- SUBWAY
- Hong Kong Express
- Dugout Sports Bar & Grill
- Early Education Center
- Rohrer Bus
- State Rd
- Susquehanna River
- Norm's Tire & Auto Service
- Hometown Mortgage Resources
- Eagle's Nest Consignments
- SHEETZ
- DOLLAR GENERAL
- SITE
- Susquehanna River
- Dr. Jon E Noll Optometrist
- By Design Hair
- Haldeaman Landscape
- Cove
- Dino's Grille
- Garden State Tee Room

1548 State Road 15
Duncannon, PA
 Current Year Estimated
 Average Household Income
 May 2015



Average HH Income
 By Blockgroups

- \$75,000 or more
- \$60,000 to \$75,000
- \$45,000 to \$60,000
- \$30,000 to \$45,000
- Less than \$30,000

This map was produced using data from private and government sources deemed to be reliable. The information herein is provided without representation or warranty.

COCCA DEVELOPMENT, LTD

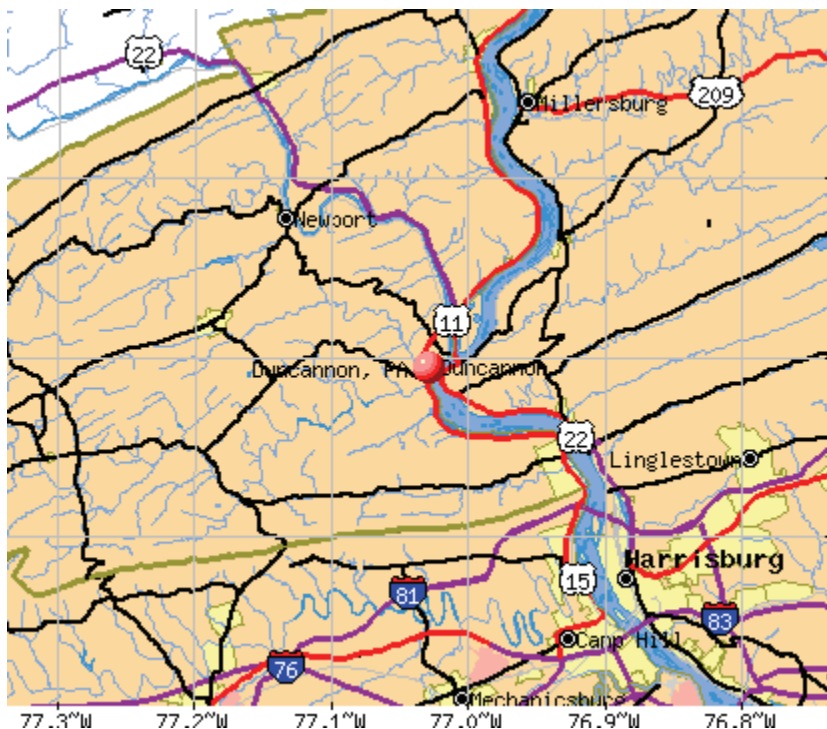
1548 State Route 15 Duncannon, PA 17020

AT A GLANCE

- ◆ Duncannon is the common name for the community and surrounding area while the formal official name is the Borough of Duncannon. It's name is derived from Duncan's Island in the Susquehanna River
- ◆ The Standard Novelty Works of Duncannon, PA helped made the famous Lightning Guider sleds from 1904-1990.
- ◆ Iron ore is found in many localities, and several furnaces are in operation in the county.
- ◆ The original population of was Scotch, Irish, and English; but the Germans and their descendants now predominate.
- ◆ Duncannon, Pennsylvania, is 45 miles northwest of Lancaster, Pennsylvania (center to center) and 78 miles north of Baltimore, Maryland.

1548 State Route 15

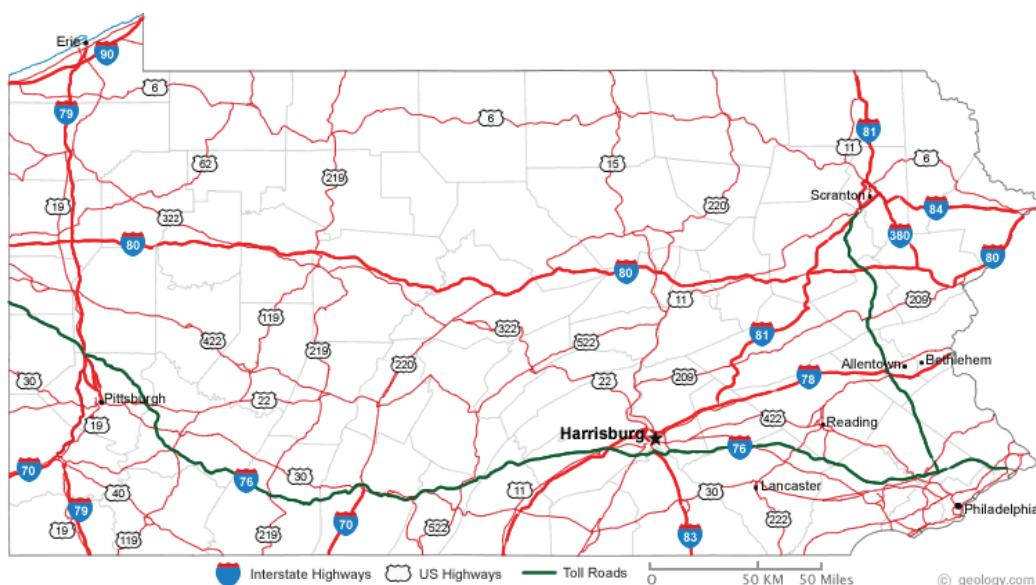
Duncannon, PA 17020



Duncannon is a borough in Perry County. The site is ideally located at 1548 State Route 15 and is .7 miles off of N. Market Street and 2 miles from US-322E / US-22E. Harrisburg which is the capital city of Pennsylvania, is 15 miles south of Duncannon, PA.

The daily traffic count on State Route 15 is 18,000.

Duncannon Borough is located in central Pennsylvania near the Susquehanna River which at 464 miles long, it is the longest river on the American east coast that drains into the Atlantic Ocean.



GRAPHIC PROFILE

2000-2010 Census, 2014 Estimates with 2019 Projections

Calculated using Proportional Block Groups

Lat/Lon: 40.3707/-77.0239

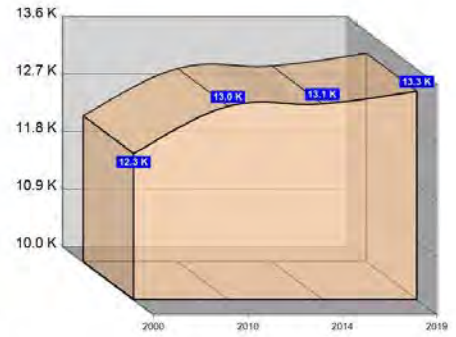
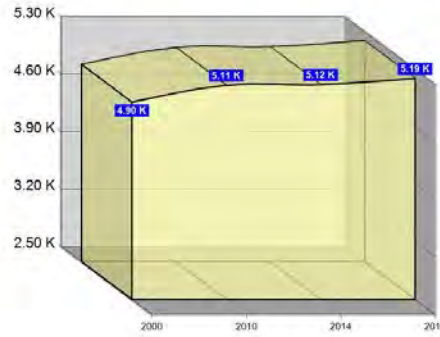
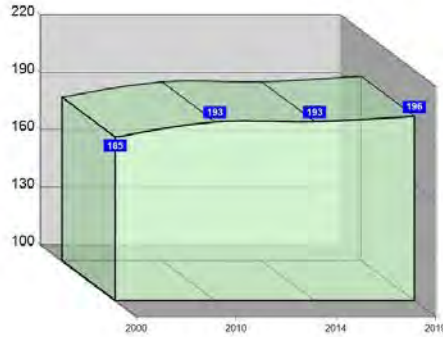
RGRAP3

1548 State Road 15

Duncannon, PA

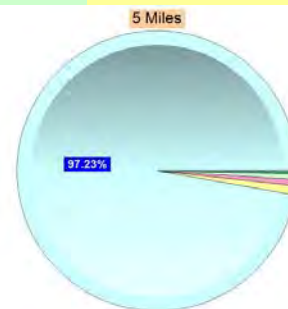
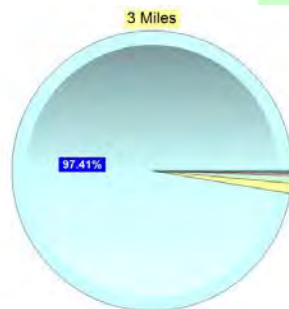
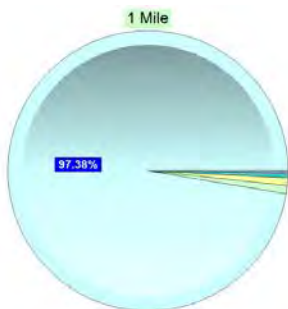
Population

	1 Mile	3 Miles	5 Miles
Estimated Population (2014)	193	5,118	13,063
Projected Population (2019)	196	5,192	13,261
Census Population (2010)	193	5,109	13,025
Census Population (2000)	185	4,904	12,286
Projected Annual Growth (2014-2019)	3 0.3%	74 0.3%	198 0.3%
Historical Annual Growth (2010-2014)	- 1.0%	9 1.0%	39 1.4%
Historical Annual Growth (2000-2010)	8 0.4%	205 0.4%	739 0.6%
Estimated Population Density (2014)	62 psm	181 psm	166 psm
Trade Area Size	3.1 sq mi	28.3 sq mi	78.5 sq mi



Race and Ethnicity (2014)

	1 Mile	3 Miles	5 Miles
Not Hispanic or Latino Population	189 97.6%	5,015 98.0%	12,845 98.3%
White	185 98.1%	4,899 97.7%	12,532 97.6%
Black or African American	2 1.0%	41 0.8%	81 0.6%
American Indian or Alaska Native	- -	5 0.1%	12 0.1%
Asian	- 0.2%	15 0.3%	92 0.7%
Hawaiian or Pacific Islander	- -	- -	3 -
Other Race	- -	1 -	3 -
Two or More Races	1 0.7%	54 1.1%	121 0.9%
Hispanic or Latino Population	5 2.4%	103 2.0%	218 1.7%
White	3 68.3%	86 84.1%	169 77.2%
Black or African American	- 0.3%	1 1.4%	4 1.8%
American Indian or Alaska Native	- -	- -	1 0.3%
Asian	- 0.3%	- 0.5%	2 0.7%
Hispanic Hawaiian or Pacific Islander	- -	- -	- -
Other Race	1 25.0%	9 8.4%	27 12.2%
Two or More Races	- 6.1%	6 5.6%	17 7.8%



White Black or African American American Indian or Alaska Native Asian Hawaiian or Pacific Islander Other Race 2+ Races

This report was produced using data from private and government sources deemed to be reliable. The information herein is provided without representation or warranty.

GRAPHIC PROFILE

2000-2010 Census, 2014 Estimates with 2019 Projections

Calculated using Proportional Block Groups

Lat/Lon: 40.3707/-77.0239

RGRAP3

1548 State Road 15

Duncannon, PA

1 Mile

3 Miles

5 Miles

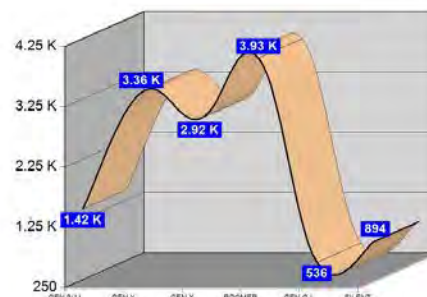
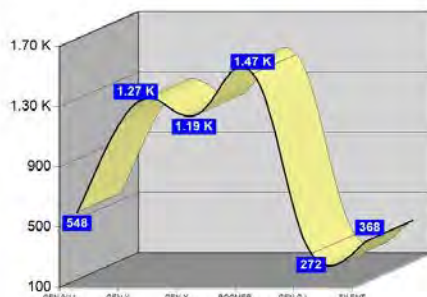
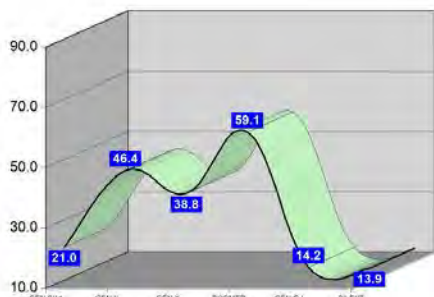
Age Distribution (2014)

Age Group	1 Mile	3 Miles	5 Miles
Age Under 5 Years	12 6.3%	296 5.8%	737 5.6%
Age 5 to 9 Years	9 4.5%	253 4.9%	685 5.2%
Age 10 to 14 Years	9 4.6%	279 5.5%	722 5.5%
Age 15 to 19 Years	10 4.9%	287 5.6%	768 5.9%
Age 20 to 24 Years	9 4.8%	329 6.4%	745 5.7%
Age 25 to 29 Years	11 5.7%	295 5.8%	684 5.2%
Age 30 to 34 Years	11 5.9%	298 5.8%	748 5.7%
Age 35 to 39 Years	10 5.4%	279 5.4%	742 5.7%
Age 40 to 44 Years	11 5.5%	318 6.2%	873 6.7%
Age 45 to 49 Years	14 7.2%	377 7.4%	1,000 7.7%
Age 50 to 54 Years	16 8.4%	403 7.9%	1,082 8.3%
Age 55 to 59 Years	16 8.2%	406 7.9%	1,083 8.3%
Age 60 to 64 Years	15 8.0%	382 7.5%	1,028 7.9%
Age 65 to 69 Years	12 6.0%	278 5.4%	737 5.6%
Age 70 to 74 Years	7 3.7%	203 4.0%	523 4.0%
Age 75 to 79 Years	7 3.4%	165 3.2%	372 2.8%
Age 80 to 84 Years	5 2.3%	124 2.4%	263 2.0%
Age 85 Years or Over	10 5.0%	148 2.9%	272 2.1%
Median Age	45.6	42.5	42.8

Generation (2014)

Generation	1 Mile	3 Miles	5 Miles
Generation 9/11 Millennials (Age Under 10 Years)	21 10.8%	548 10.7%	1,421 10.9%
Gen Y to Echo Boomers (Age 10 to 29 Years)	39 20.0%	1,190 23.3%	2,918 22.3%
Gen Xers (Age 30 to 49 Years)	46 24.0%	1,271 24.8%	3,362 25.7%
Baby Boomers (Age 50 to 69 Years)	59 30.6%	1,469 28.7%	3,931 30.1%
Silent Generation (Age 70 to 79 Years)	14 7.2%	368 7.2%	894 6.8%
G.I. Generation (Age 80 Years or Over)	14 7.3%	272 5.3%	536 4.1%

This report was produced using data from private and government sources deemed to be reliable. The information herein is provided without representation or warranty.



GRAPHIC PROFILE

2000-2010 Census, 2014 Estimates with 2019 Projections

Calculated using Proportional Block Groups

Lat/Lon: 40.3707/-77.0239

RGRAP3

1548 State Road 15

Duncannon, PA

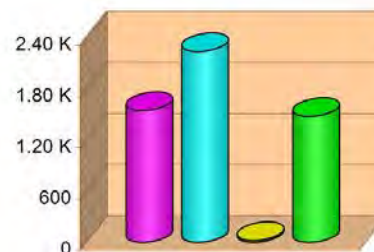
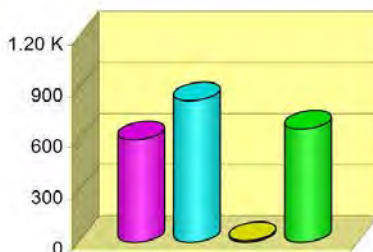
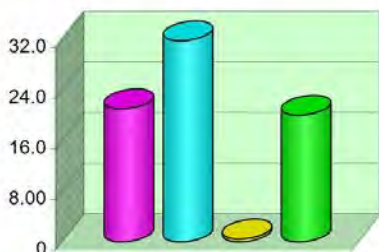
1 Mile

3 Miles

5 Miles

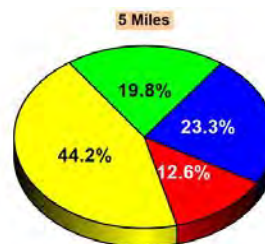
Household Type (2014)

	1 Mile	3 Miles	5 Miles
Total Households	73	2,106	5,281
Family Households	53 43.4%	1,432 39.4%	3,784 42.4%
Family Households with Children	21 39.8%	601 42.0%	1,546 40.9%
Family Households No Children	32 60.2%	831 58.0%	2,238 59.1%
Non-Family Households	20 43.4%	674 39.4%	1,497 42.4%
Non-Family Households with Children	- 2.2%	10 1.5%	21 1.4%
Non-Family Households No Children	20 97.8%	664 98.5%	1,476 98.6%



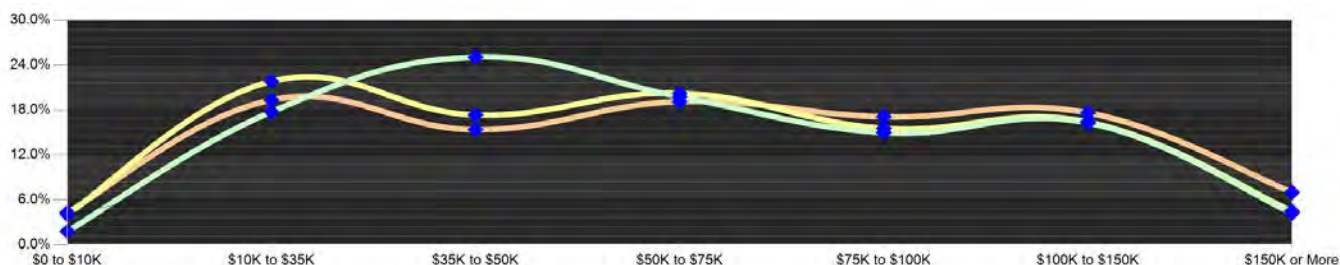
Education Attainment (2014)

	1 Mile	3 Miles	5 Miles
Elementary or Some High School	23 17.5%	537 15.0%	1,171 12.6%
High School Graduate	58 43.6%	1,656 46.4%	4,098 44.2%
Some College or Associate Degree	28 21.2%	794 22.2%	2,157 23.3%
Bachelor or Graduate Degree	24 17.7%	585 16.4%	1,838 19.8%



Household Income (2014)

	1 Mile	3 Miles	5 Miles
Estimated Average Household Income	\$60,340	\$58,381	\$66,771
Estimated Median Household Income	\$47,564	\$49,876	\$57,742
HH Income Under \$10,000	1 1.8%	86 4.1%	228 4.3%
HH Income \$10,000 to \$34,999	13 17.8%	460 21.8%	1,022 19.4%
HH Income \$35,000 to \$49,999	18 25.1%	365 17.4%	813 15.4%
HH Income \$50,000 to \$74,999	15 19.8%	426 20.2%	1,011 19.1%
HH Income \$75,000 to \$99,999	12 16.3%	346 16.4%	932 17.6%
HH Income \$100,000 to \$149,999	12 16.3%	346 16.4%	932 17.6%
HH Income \$150,000 or More	3 4.2%	94 4.5%	371 7.0%



This report was produced using data from private and government sources deemed to be reliable. The information herein is provided without representation or warranty.

EXPANDED PROFILE

2000-2010 Census, 2014 Estimates with 2019 Projections

Calculated using Proportional Block Groups

Lat/Lon: 40.3707/-77.0239

RF5

1548 State Road 15 Duncannon, PA	1 Mile	3 Miles	5 Miles
Population			
Estimated Population (2014)	193	5,118	13,063
Projected Population (2019)	196	5,192	13,261
Census Population (2010)	193	5,109	13,025
Census Population (2000)	185	4,904	12,286
Projected Annual Growth (2014 to 2019)	3 0.3%	74 0.3%	198 0.3%
Historical Annual Growth (2010 to 2014)	- -	9 -	39 0.1%
Historical Annual Growth (2000 to 2010)	8 0.4%	205 0.4%	739 0.6%
Estimated Population Density (2014)	62 <i>psm</i>	181 <i>psm</i>	166 <i>psm</i>
Trade Area Size	3.14 <i>sq mi</i>	28.26 <i>sq mi</i>	78.49 <i>sq mi</i>
Households			
Estimated Households (2014)	73	2,106	5,281
Projected Households (2019)	76	2,175	5,462
Census Households (2010)	72	2,063	5,169
Census Households (2000)	70	1,972	4,809
Estimated Households with Children (2014)	21 29.3%	611 29.0%	1,567 29.7%
Estimated Average Household Size (2014)	2.48	2.38	2.45
Average Household Income			
Estimated Average Household Income (2014)	\$65,071	\$65,285	\$74,426
Projected Average Household Income (2019)	\$69,890	\$70,932	\$81,099
Estimated Average Family Income (2014)	\$70,297	\$73,929	\$84,498
Median Household Income			
Estimated Median Household Income (2014)	\$56,475	\$58,536	\$65,904
Projected Median Household Income (2019)	\$61,866	\$63,840	\$71,582
Estimated Median Family Income (2014)	\$64,062	\$68,623	\$76,024
Per Capita Income			
Estimated Per Capita Income (2014)	\$25,184	\$27,040	\$30,186
Projected Per Capita Income (2019)	\$27,526	\$29,905	\$33,510
Estimated Per Capita income 5 Year Growth	\$2,342 9.3%	\$2,865 10.6%	\$3,324 11.0%
Estimated Average Household Net Worth (2014)	\$400,338	\$388,724	\$438,327
Daytime Demos (2014)			
Total Businesses	9	181	347
Total Employees	82	1,046	1,923
Company Headquarter Businesses	- -	- -	- 0.1%
Company Headquarter Employees	- -	- -	18 1.0%
Employee Population per Business	8.9	5.8	5.5
Residential Population per Business	21.1	28.2	37.6

This report was produced using data from private and government sources deemed to be reliable. The information herein is provided without representation or warranty.

EXPANDED PROFILE

2000-2010 Census, 2014 Estimates with 2019 Projections

Calculated using Proportional Block Groups

Lat/Lon: 40.3707/-77.0239

RF5

1548 State Road 15

Duncannon, PA

Race & Ethnicity

	1 Mile		3 Miles		5 Miles	
White (2014)	188	97.4%	4,985	97.4%	12,701	97.2%
Black or African American (2014)	2	0.9%	43	0.8%	85	0.7%
American Indian or Alaska Native (2014)	-	-	5	0.1%	13	0.1%
Asian (2014)	-	0.2%	16	0.3%	94	0.7%
Hawaiian or Pacific Islander (2014)	-	-	-	-	3	-
Other Race (2014)	1	0.6%	10	0.2%	30	0.2%
Two or More Races (2014)	2	0.9%	59	1.2%	138	1.1%
Not Hispanic or Latino Population (2014)	189	97.6%	5,015	98.0%	12,845	98.3%
Hispanic or Latino Population (2014)	5	2.4%	103	2.0%	218	1.7%
Not Hispanic or Latino Population (2019)	191	97.2%	5,071	97.7%	13,006	98.1%
Hispanic or Latino Population (2019)	5	2.8%	121	2.3%	255	1.9%
Not Hispanic or Latino Population (2010)	190	98.1%	5,025	98.3%	12,844	98.6%
Hispanic or Latino Population (2010)	4	1.9%	84	1.7%	181	1.4%
Not Hispanic or Latino Population (2000)	184	99.5%	4,869	99.3%	12,210	99.4%
Hispanic or Latino Population (2000)	1	0.5%	36	0.7%	76	0.6%
Projected Hispanic Annual Growth (2014 to 2019)	1	3.8%	18	3.6%	37	3.4%
Historic Hispanic Annual Growth (2000 to 2014)	4	27.1%	67	13.5%	142	13.3%

Age Distribution (2014)

	1 Mile		3 Miles		5 Miles	
Age Under 5	12	6.3%	296	5.8%	737	5.6%
Age 5 to 9 Years	9	4.5%	253	4.9%	685	5.2%
Age 10 to 14 Years	9	4.6%	279	5.5%	722	5.5%
Age 15 to 19 Years	10	4.9%	287	5.6%	768	5.9%
Age 20 to 24 Years	9	4.8%	329	6.4%	745	5.7%
Age 25 to 29 Years	11	5.7%	295	5.8%	684	5.2%
Age 30 to 34 Years	11	5.9%	298	5.8%	748	5.7%
Age 35 to 39 Years	10	5.4%	279	5.4%	742	5.7%
Age 40 to 44 Years	11	5.5%	318	6.2%	873	6.7%
Age 45 to 49 Years	14	7.2%	377	7.4%	1,000	7.7%
Age 50 to 54 Years	16	8.4%	403	7.9%	1,082	8.3%
Age 55 to 59 Years	16	8.2%	406	7.9%	1,083	8.3%
Age 60 to 64 Years	15	8.0%	382	7.5%	1,028	7.9%
Age 65 to 74 Years	19	9.7%	480	9.4%	1,260	9.6%
Age 75 to 84 Years	11	5.8%	290	5.7%	635	4.9%
Age 85 Years or Over	10	5.0%	148	2.9%	272	2.1%
Median Age	45.6		42.5		42.8	

Gender Age Distribution (2014)

	1 Mile		3 Miles		5 Miles	
Female Population	102	52.7%	2,632	51.4%	6,633	50.8%
Age 0 to 19 Years	20	19.2%	558	21.2%	1,442	21.7%
Age 20 to 64 Years	57	56.5%	1,530	58.1%	3,972	59.9%
Age 65 Years or Over	25	24.3%	544	20.7%	1,220	18.4%
Female Median Age	46.8		43.6		43.5	
Male Population	92	47.3%	2,485	48.6%	6,430	49.2%
Age 0 to 19 Years	20	21.7%	556	22.4%	1,469	22.8%
Age 20 to 64 Years	57	62.0%	1,555	62.6%	4,013	62.4%
Age 65 Years or Over	15	16.3%	374	15.0%	948	14.7%
Male Median Age	44.4		41.5		42.0	

This report was produced using data from private and government sources deemed to be reliable. The information herein is provided without representation or warranty.

EXPANDED PROFILE

2000-2010 Census, 2014 Estimates with 2019 Projections

Calculated using Proportional Block Groups

Lat/Lon: 40.3707/-77.0239

RF5

1548 State Road 15

Duncannon, PA

Household Income Distribution (2014)

	1 Mile		3 Miles		5 Miles	
HH Income \$200,000 or More	-	0.5%	13	0.6%	116	2.2%
HH Income \$150,000 to \$199,999	3	3.8%	81	3.9%	255	4.8%
HH Income \$100,000 to \$149,999	12	16.3%	346	16.4%	932	17.6%
HH Income \$75,000 to \$99,999	11	15.0%	328	15.6%	904	17.1%
HH Income \$50,000 to \$74,999	15	19.8%	426	20.2%	1,011	19.1%
HH Income \$35,000 to \$49,999	18	25.1%	365	17.4%	813	15.4%
HH Income \$25,000 to \$34,999	7	10.1%	241	11.5%	527	10.0%
HH Income \$15,000 to \$24,999	4	5.0%	150	7.1%	339	6.4%
HH Income Under \$15,000	3	4.5%	155	7.4%	384	7.3%
HH Income \$35,000 or More	59	80.4%	1,560	74.1%	4,031	76.3%
HH Income \$75,000 or More	26	35.5%	768	36.5%	2,206	41.8%

Housing (2014)

	1 Mile		3 Miles		5 Miles	
Total Housing Units	80		2,247		5,595	
Housing Units Occupied	73	91.8%	2,106	93.7%	5,281	94.4%
Housing Units Owner-Occupied	60	81.3%	1,523	72.3%	4,248	80.4%
Housing Units, Renter-Occupied	14	18.7%	582	27.7%	1,033	19.6%
Housing Units, Vacant	7	8.2%	142	6.3%	314	5.6%

Marital Status (2014)

	1 Mile		3 Miles		5 Miles	
Never Married	38	23.4%	1,084	25.3%	2,638	24.2%
Currently Married	84	51.1%	2,256	52.6%	6,113	56.0%
Separated	2	1.3%	137	3.2%	341	3.1%
Widowed	17	10.2%	304	7.1%	679	6.2%
Divorced	23	14.0%	509	11.9%	1,148	10.5%

Household Type (2014)

	1 Mile		3 Miles		5 Miles	
Population Family	150	77.4%	4,059	79.3%	10,764	82.4%
Population Non-Family	32	16.6%	955	18.7%	2,154	16.5%
Population Group Quarters	12	6.0%	104	2.0%	145	1.1%
Family Households	53	72.1%	1,432	68.0%	3,784	71.7%
Non-Family Households	20	27.9%	674	32.0%	1,497	28.3%
Married Couple with Children	16	19.0%	405	17.9%	1,139	18.6%
Average Family Household Size	2.8		2.8		2.8	

Household Size (2014)

	1 Mile		3 Miles		5 Miles	
1 Person Households	16	22.0%	552	26.2%	1,212	23.0%
2 Person Households	29	40.0%	773	36.7%	2,035	38.5%
3 Person Households	11	15.4%	365	17.3%	924	17.5%
4 Person Households	11	15.0%	256	12.2%	685	13.0%
5 Person Households	3	3.5%	107	5.1%	289	5.5%
6 or More Person Households	3	4.1%	52	2.5%	136	2.6%

Household Vehicles (2014)

	1 Mile		3 Miles		5 Miles	
Households with 0 Vehicles Available	1	1.9%	103	4.9%	199	3.8%
Households with 1 Vehicles Available	19	26.3%	561	26.6%	1,284	24.3%
Households with 2 or More Vehicles Available	53	71.8%	1,441	68.5%	3,798	71.9%
Total Vehicles Available	147		4,289		11,192	
Average Vehicles Per Household	2.0		2.0		2.1	

This report was produced using data from private and government sources deemed to be reliable. The information herein is provided without representation or warranty.

EXPANDED PROFILE

2000-2010 Census, 2014 Estimates with 2019 Projections

Calculated using Proportional Block Groups

Lat/Lon: 40.3707/-77.0239

RF5

1548 State Road 15

Duncannon, PA

Labor Force (2014)

	1 Mile	3 Miles	5 Miles
Estimated Labor Population Age 16 Years or Over	150	4,137	10,620
Estimated Civilian Employed	94 62.4%	2,591 62.6%	6,711 63.2%
Estimated Civilian Unemployed	6 4.2%	166 4.0%	430 4.1%
Estimated in Armed Forces	- -	1 -	4 -
Estimated Not in Labor Force	50 33.3%	1,379 33.3%	3,475 32.7%
Unemployment Rate	4.2%	4.0%	4.1%

Occupation (2010)

	1 Mile	3 Miles	5 Miles
Occupation: Population Age 16 Years or Over	83	2,383	6,392
Management, Business, Financial Operations	11 13.3%	306 12.8%	858 13.4%
Professional, Related	11 13.6%	350 14.7%	1,081 16.9%
Service	17 20.4%	409 17.2%	948 14.8%
Sales, Office	19 23.4%	706 29.6%	1,917 30.0%
Farming, Fishing, Forestry	- -	7 0.3%	16 0.3%
Construct, Extraction, Maintenance	10 11.7%	249 10.5%	646 10.1%
Production, Transport Material Moving	15 17.6%	356 14.9%	927 14.5%
White Collar Workers	42 50.3%	1,362 57.2%	3,855 60.3%
Blue Collar Workers	41 49.7%	1,021 42.8%	2,537 39.7%

Consumer Expenditure (2014)

	1 Mile	3 Miles	5 Miles
Total Household Expenditure	\$3.84 M	\$110 M	\$303 M
Total Non-Retail Expenditure	\$2.21 M 57.5%	\$63.5 M 57.5%	\$174 M 57.6%
Total Retail Expenditure	\$1.63 M 42.5%	\$47.0 M 42.5%	\$128 M 42.4%
Apparel	\$181 K 4.7%	\$5.24 M 4.7%	\$14.4 M 4.8%
Contributions	\$136 K 3.6%	\$3.94 M 3.6%	\$11.3 M 3.7%
Education	\$85.8 K 2.2%	\$2.53 M 2.3%	\$7.27 M 2.4%
Entertainment	\$215 K 5.6%	\$6.17 M 5.6%	\$17.0 M 5.6%
Food and Beverages	\$590 K 15.4%	\$17.0 M 15.4%	\$46.0 M 15.2%
Furnishings and Equipment	\$169 K 4.4%	\$4.86 M 4.4%	\$13.5 M 4.5%
Gifts	\$99.9 K 2.6%	\$2.89 M 2.6%	\$8.15 M 2.7%
Health Care	\$238 K 6.2%	\$6.83 M 6.2%	\$18.3 M 6.1%
Household Operations	\$134 K 3.5%	\$3.88 M 3.5%	\$11.0 M 3.6%
Miscellaneous Expenses	\$65.0 K 1.7%	\$1.87 M 1.7%	\$5.03 M 1.7%
Personal Care	\$55.5 K 1.4%	\$1.60 M 1.4%	\$4.37 M 1.4%
Personal Insurance	\$38.3 K 1.0%	\$1.10 M 1.0%	\$3.13 M 1.0%
Reading	\$12.6 K 0.3%	\$363 K 0.3%	\$996 K 0.3%
Shelter	\$738 K 19.2%	\$21.3 M 19.3%	\$58.6 M 19.3%
Tobacco	\$25.6 K 0.7%	\$730 K 0.7%	\$1.90 M 0.6%
Transportation	\$785 K 20.4%	\$22.5 M 20.3%	\$61.0 M 20.2%
Utilities	\$269 K 7.0%	\$7.74 M 7.0%	\$20.7 M 6.9%

Educational Attainment (2014)

	1 Mile	3 Miles	5 Miles
Adult Population Age 25 Years or Over	133	3,571	9,263
Elementary (Grade Level 0 to 8)	10 7.5%	220 6.2%	427 4.6%
Some High School (Grade Level 9 to 11)	13 10.0%	317 8.9%	744 8.0%
High School Graduate	58 43.6%	1,656 46.4%	4,098 44.2%
Some College	20 15.0%	524 14.7%	1,430 15.4%
Associate Degree Only	8 6.3%	270 7.6%	726 7.8%
Bachelor Degree Only	19 14.2%	437 12.2%	1,307 14.1%
Graduate Degree	5 3.6%	147 4.1%	531 5.7%

This report was produced using data from private and government sources deemed to be reliable. The information herein is provided without representation or warranty.

EXPANDED PROFILE

2000-2010 Census, 2014 Estimates with 2019 Projections

Calculated using Proportional Block Groups

Lat/Lon: 40.3707/-77.0239

RF5

1548 State Road 15

Duncannon, PA

Units In Structure (2010)

	1 Mile		3 Miles		5 Miles	
1 Detached Unit	62	87.0%	1,428	69.2%	3,949	76.4%
1 Attached Unit	3	3.7%	170	8.2%	337	6.5%
2 to 4 Units	1	1.8%	118	5.7%	187	3.6%
5 to 9 Units	-	-	158	7.7%	240	4.6%
10 to 19 Units	-	0.2%	33	1.6%	54	1.0%
20 to 49 Units	-	-	51	2.5%	67	1.3%
50 or More Units	-	-	4	0.2%	13	0.2%
Mobile Home or Trailer	5	7.2%	101	4.9%	322	6.2%
Other Structure	-	-	-	-	-	-

Homes Built By Year (2010)

Homes Built 2005 or later	1	1.7%	70	3.4%	226	4.4%
Homes Built 2000 to 2004	2	3.4%	109	5.3%	310	6.0%
Homes Built 1990 to 1999	7	9.4%	172	8.3%	474	9.2%
Homes Built 1980 to 1989	7	9.2%	239	11.6%	722	14.0%
Homes Built 1970 to 1979	13	18.3%	296	14.3%	824	15.9%
Homes Built 1960 to 1969	4	5.4%	184	8.9%	470	9.1%
Homes Built 1950 to 1959	16	22.2%	278	13.5%	659	12.8%
Homes Built Before 1949	22	30.3%	716	34.7%	1,484	28.7%

Home Values (2010)

Home Values \$1,000,000 or More	-	0.3%	2	0.1%	25	0.6%
Home Values \$500,000 to \$999,999	-	0.8%	14	0.9%	64	1.6%
Home Values \$400,000 to \$499,999	-	0.9%	26	1.8%	87	2.1%
Home Values \$300,000 to \$399,999	6	10.2%	85	5.7%	276	6.6%
Home Values \$200,000 to \$299,999	9	15.1%	244	16.4%	768	18.5%
Home Values \$150,000 to \$199,999	10	17.9%	334	22.4%	1,008	24.3%
Home Values \$100,000 to \$149,999	15	25.3%	368	24.7%	958	23.1%
Home Values \$70,000 to \$99,999	8	13.8%	243	16.3%	483	11.6%
Home Values \$50,000 to \$69,999	2	2.6%	67	4.5%	158	3.8%
Home Values \$25,000 to \$49,999	6	10.2%	70	4.7%	159	3.8%
Home Values Under \$25,000	2	3.0%	36	2.4%	166	4.0%
Owner-Occupied Median Home Value	\$137,869		\$143,250		\$157,666	
Renter-Occupied Median Rent	\$524		\$521		\$544	

Transportation To Work (2010)

Drive to Work Alone	68	80.2%	1,936	82.4%	5,297	84.6%
Drive to Work in Carpool	13	15.1%	297	12.6%	659	10.5%
Travel to Work by Public Transportation	-	0.2%	10	0.4%	31	0.5%
Drive to Work on Motorcycle	-	-	3	0.1%	11	0.2%
Walk or Bicycle to Work	-	0.2%	14	0.6%	31	0.5%
Other Means	1	1.6%	18	0.8%	28	0.5%
Work at Home	2	2.6%	72	3.1%	201	3.2%

Travel Time (2010)

Travel to Work in 14 Minutes or Less	8	9.4%	334	14.7%	838	13.8%
Travel to Work in 15 to 29 Minutes	32	39.0%	856	37.6%	2,417	39.9%
Travel to Work in 30 to 59 Minutes	36	43.7%	977	42.9%	2,525	41.7%
Travel to Work in 60 Minutes or More	7	7.9%	110	4.8%	277	4.6%
Average Minutes Travel to Work	28.8		27.9		27.1	

This report was produced using data from private and government sources deemed to be reliable. The information herein is provided without representation or warranty.