

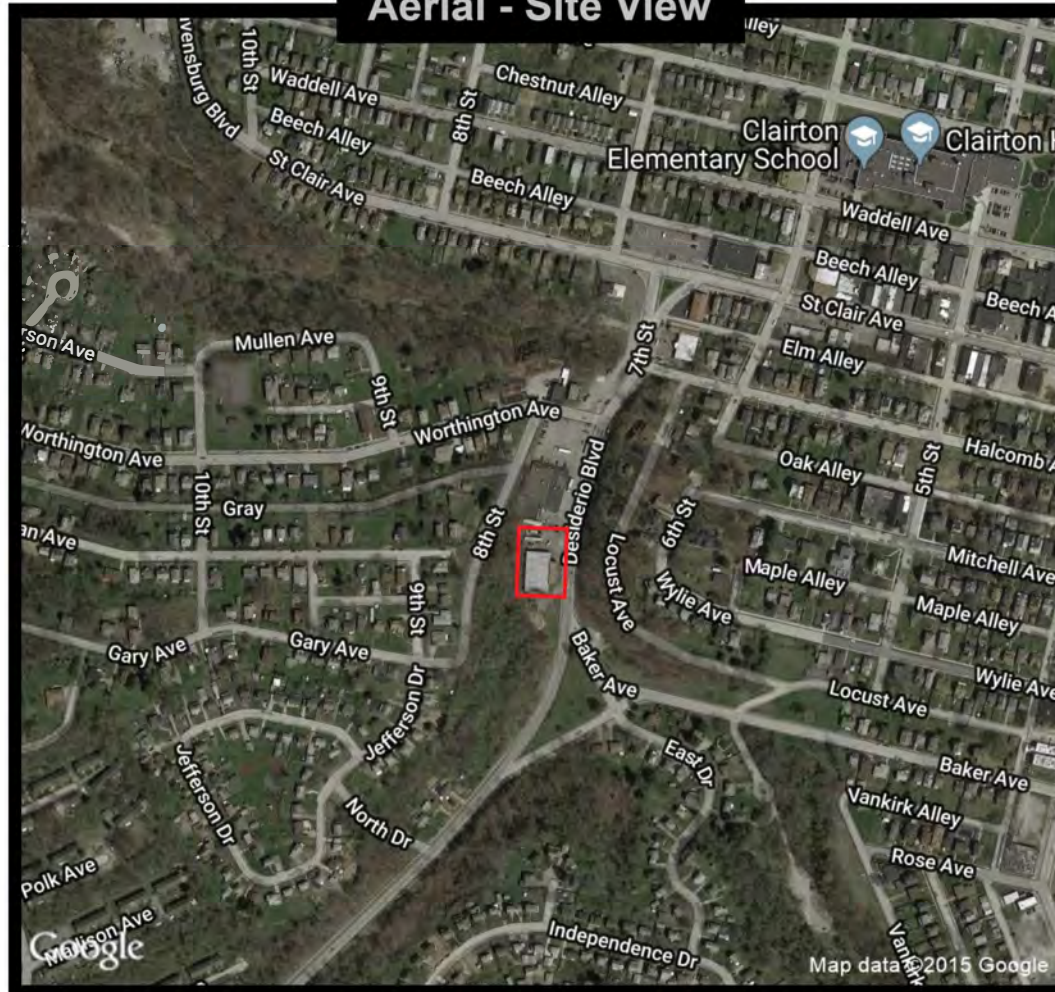
700 Worthington Ave
Clairton, PA 15025

\$3/sq. ft. NNN

*NNN includes but not limited to Real Estate Taxes, Insurance, and CAM (such as parking lot maintenance, snow removal, lawn care, etc.)

RETAIL SPACE FOR LEASE

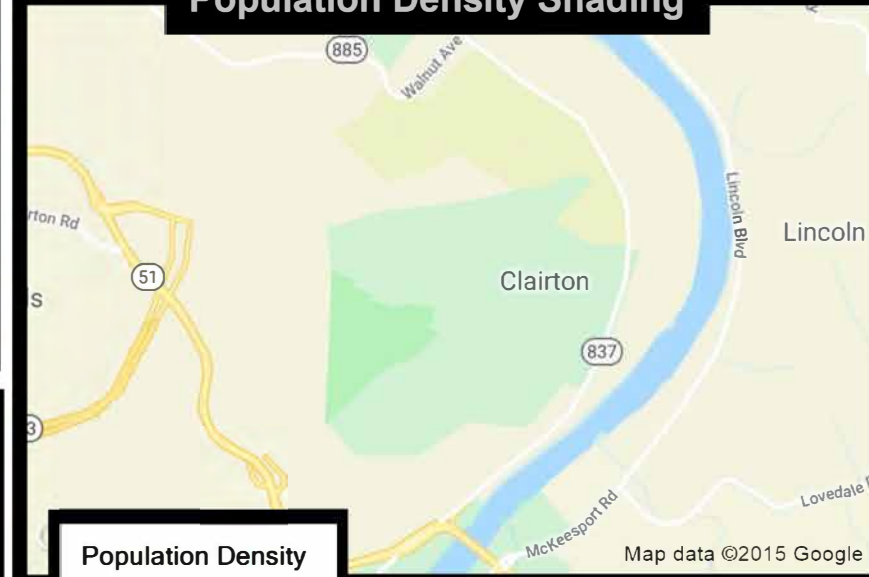
Aerial - Site View



4,760 sq. ft. available in rear of building with Dollar General and Metro PCS; ideal for storage or business with no frontage needed

Easily accessible from 7th Street/Worthington Avenue and 8th Street

Population Density Shading



Population Density

By Blockgroups

- 7,500 or more
- 5,000 to 7,500
- 2,500 to 5,000
- 1,000 to 2,500
- Less than 1,000

Demographic Data

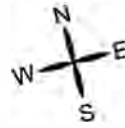
	1 mi radius	3 mi radius	5 mi radius
Population (2019)	5,860	23,493	83,804
Households (2019)	2,776	10,684	37,710
Median household income (2019)	\$40,749	\$54,844	\$58,273
Total Employees	1,234	9,814	31,639
Total Establishments	146	984	3,093

COCCA DEVELOPMENT, LTD

100 DEBARTOLO PLACE SUITE 400 BOARDMAN, OHIO 44512
(330) 729-1010

WWW.COCCADEVELOPMENT.COM

This map was produced using data from private and government sources deemed to be reliable. The information herein is provided without representation or warranty.



WORTHINGTON AVENUE

8th STREET

SEVENTH STREET

303.10'

300.00'

192.12'

148.49'

30' EXISTING DRIVEWAY

DE Pylon SIGN

EXISTING HANDICAP RAMP, SEE DETAILS THIS SHEET

HANDICAP PARKING SIGNS MOUNTED TO BUILDING FACE

METRO PCS
2,693 SF

DOLLAR GENERAL SPACE
9,540 SF

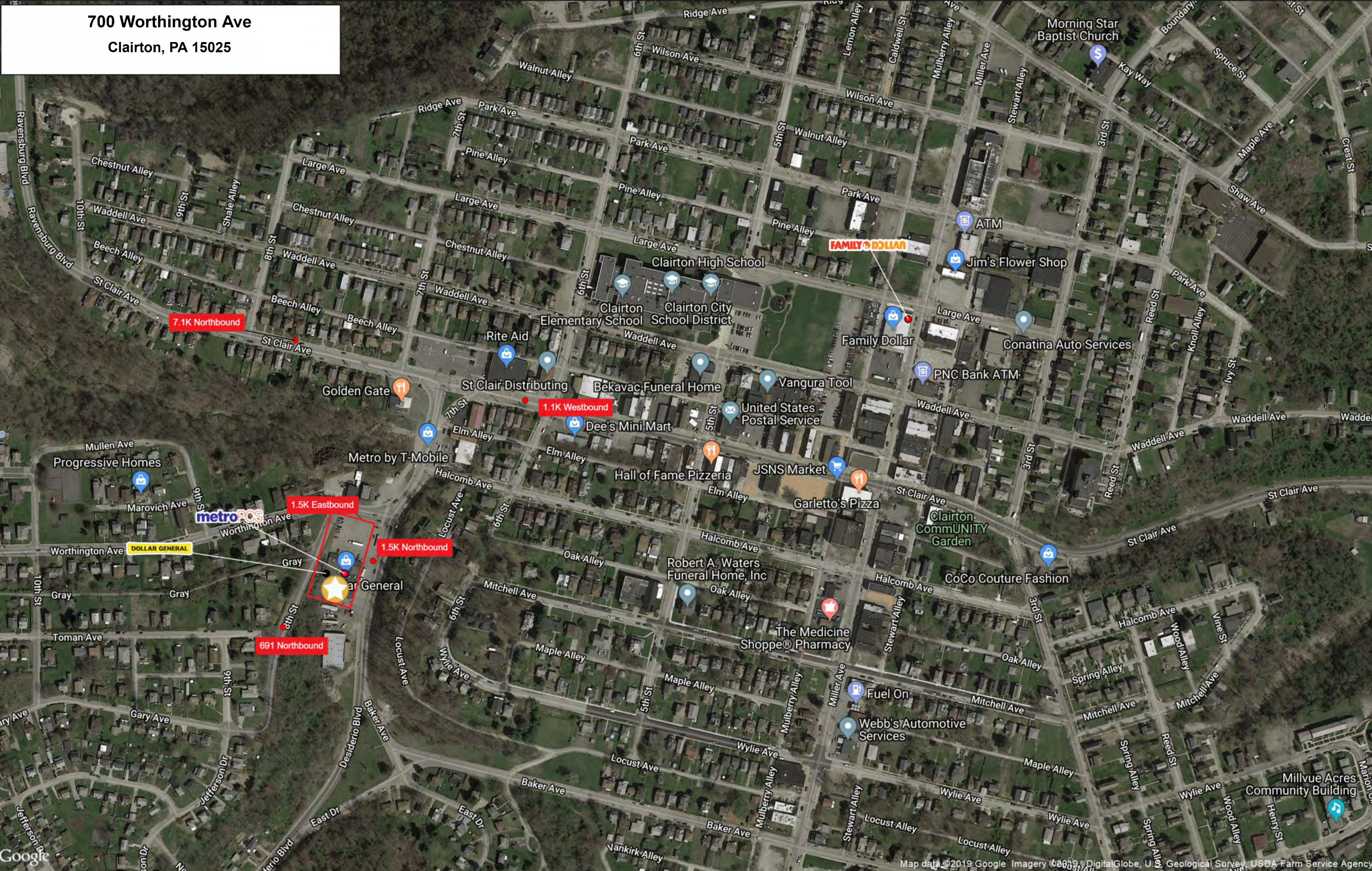
EM EXIT HALLWAY
TOTAL = 475 SF

VACANT SPACE
APPROX 4,760 SF

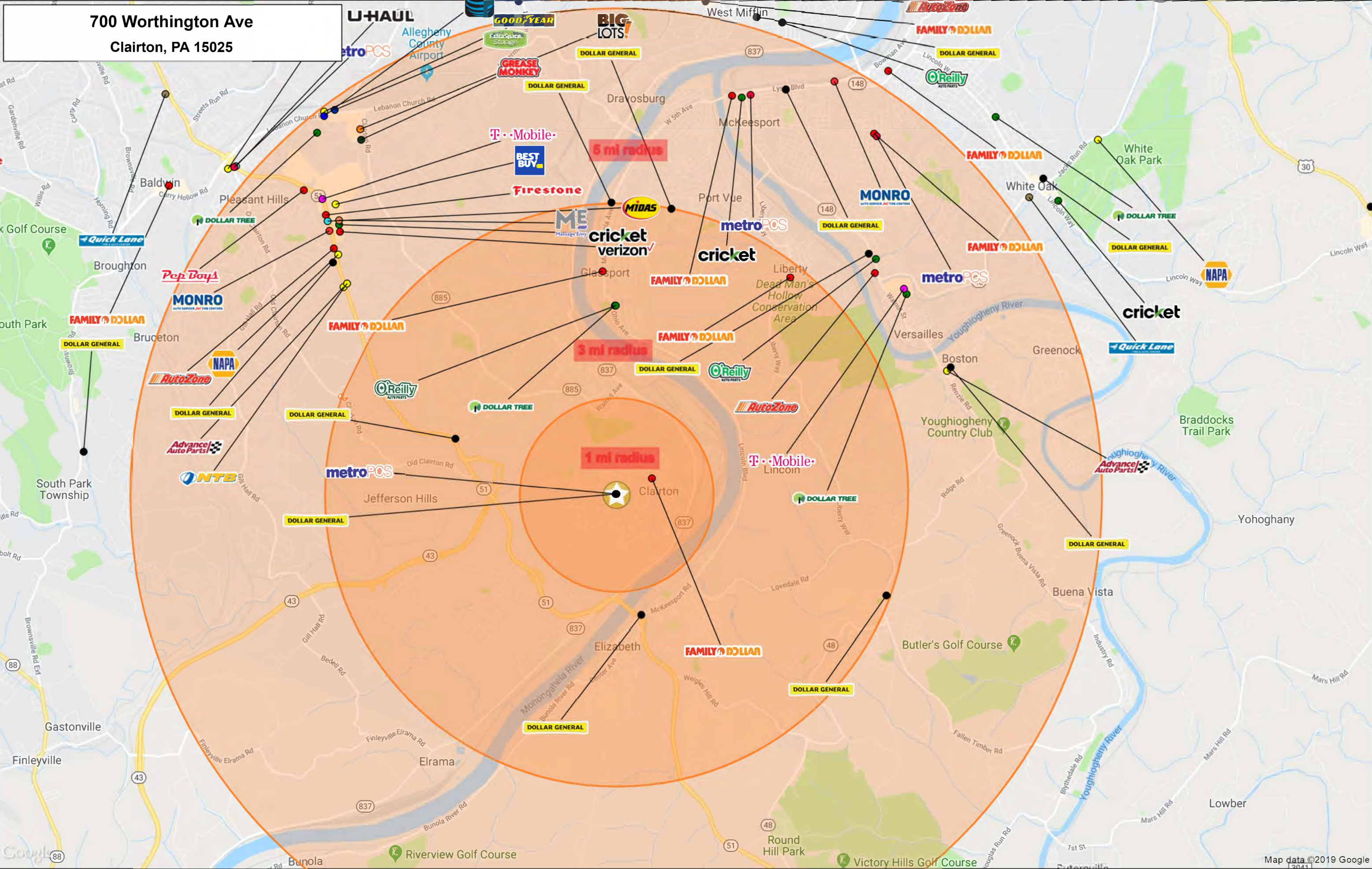
6" WIDE x 4" TALL CURB FOR PAVEMENT PROTECTION
1:12 SLOPE MINIMUM FROM LANDING TO PARKING LOT GRADE

PAVED TO ROADWAY

700 Worthington Ave
Clairton, PA 15025



700 Worthington Ave
Clairton, PA 15025



GRAPHIC PROFILE

2000-2010 Census, 2019 Estimates with 2024 Projections

Calculated using Weighted Block Centroid from Block Groups

Lat/Lon: 40.2917/-79.8901

RGRAP3

700 Worthington Ave

Clairton, PA 15025

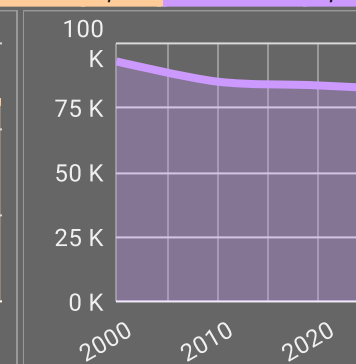
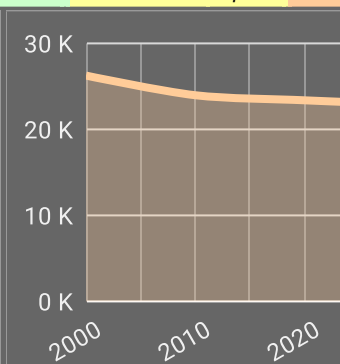
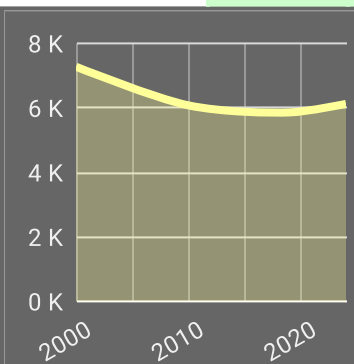
1 mi radius

3 mi radius

5 mi radius

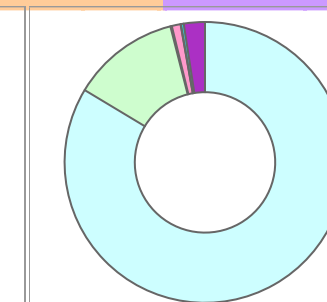
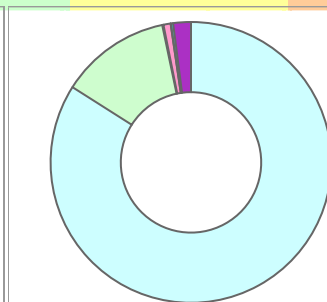
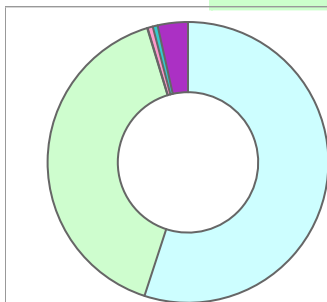
Population

Estimated Population (2019)	5,860	23,436	83,793
Projected Population (2024)	6,125	23,177	82,872
Census Population (2010)	6,078	23,974	85,088
Census Population (2000)	7,278	26,258	92,924
Projected Annual Growth (2019-2024)	265 0.9%	-259 -0.2%	-921 -0.2%
Historical Annual Growth (2010-2019)	-218 -0.4%	-538 -0.3%	-1,295 -0.2%
Historical Annual Growth (2000-2010)	-1,200 -1.6%	-2,284 -0.9%	-7,836 -0.8%
Estimated Population Density (2019)	1,866 psm	829 psm	1,067 psm
Trade Area Size	3.1 sq mi	28.3 sq mi	78.5 sq mi



Race and Ethnicity (2019)

Not Hispanic or Latino Population	5,714 97.5%	23,056 98.4%	82,193 98.1%
White	3,166 55.4%	19,452 84.4%	69,166 84.2%
Black or African American	2,333 40.8%	2,947 12.8%	10,253 12.5%
American Indian or Alaska Native	3 -	26 0.1%	118 0.1%
Asian	34 0.6%	191 0.8%	835 1.0%
Hawaiian or Pacific Islander	- -	2 -	13 -
Other Race	15 0.3%	25 0.1%	74 -
Two or More Races	164 2.9%	414 1.8%	1,734 2.1%
Hispanic or Latino Population	146 2.5%	380 1.6%	1,600 1.9%
White	58 39.8%	234 61.6%	895 56.0%
Black or African American	27 18.8%	32 8.4%	153 9.6%
American Indian or Alaska Native	- -	7 1.9%	23 1.4%
Asian	2 1.4%	2 0.6%	12 0.8%
Hispanic Hawaiian or Pacific Islander	- -	- -	6 0.4%
Other Race	18 12.6%	40 10.5%	212 13.3%
Two or More Races	40 27.4%	63 16.7%	298 18.6%



White Black or African American American Indian or Alaska Native Asian Hawaiian or Pacific Islander Other Race 2+ Races

Lat/Lon: 40.2917/-79.8901

RGRAP3

700 Worthington Ave
Clairton, PA 15025

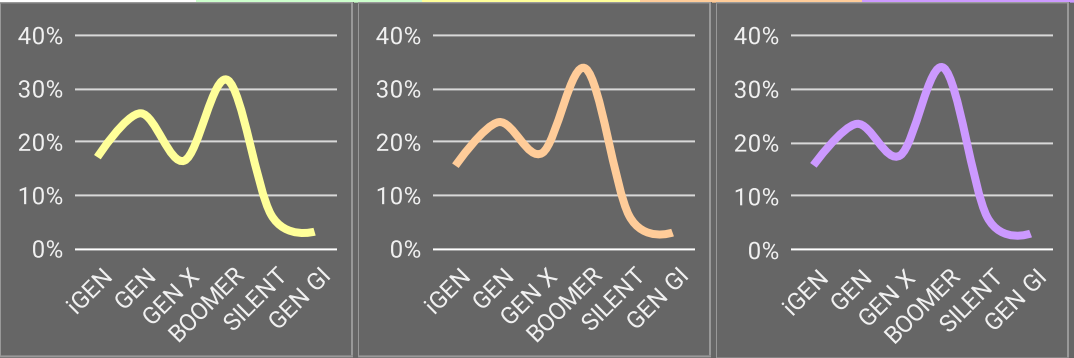
1 mi radius 3 mi radius 5 mi radius

Age Distribution (2019)

Age Under 5 Years	372	6.3%	1,227	5.2%	4,351	5.2%
Age 5 to 9 Years	308	5.3%	1,163	5.0%	4,359	5.2%
Age 10 to 14 Years	323	5.5%	1,248	5.3%	4,497	5.4%
Age 15 to 19 Years	333	5.7%	1,283	5.5%	4,774	5.7%
Age 20 to 24 Years	330	5.6%	1,167	5.0%	4,164	5.0%
Age 25 to 29 Years	414	7.1%	1,504	6.4%	5,208	6.2%
Age 30 to 34 Years	410	7.0%	1,599	6.8%	5,534	6.6%
Age 35 to 39 Years	367	6.3%	1,547	6.6%	5,431	6.5%
Age 40 to 44 Years	277	4.7%	1,263	5.4%	4,473	5.3%
Age 45 to 49 Years	321	5.5%	1,387	5.9%	4,861	5.8%
Age 50 to 54 Years	361	6.2%	1,506	6.4%	5,387	6.4%
Age 55 to 59 Years	444	7.6%	1,789	7.6%	6,528	7.8%
Age 60 to 64 Years	446	7.6%	1,840	7.8%	6,644	7.9%
Age 65 to 69 Years	354	6.0%	1,583	6.8%	5,616	6.7%
Age 70 to 74 Years	245	4.2%	1,185	5.1%	4,233	5.1%
Age 75 to 79 Years	215	3.7%	848	3.6%	2,995	3.6%
Age 80 to 84 Years	155	2.7%	595	2.5%	2,166	2.6%
Age 85 Years or Over	185	3.2%	702	3.0%	2,572	3.1%
Median Age	40.2		42.6		42.8	

Generation (2019)

iGeneration (Age Under 15 Years)	1,003	17.1%	3,638	15.5%	13,207	15.8%
Generation 9/11 Millennials (Age 15 to 34 Years)	1,485	25.3%	5,552	23.7%	19,679	23.5%
Gen Xers (Age 35 to 49 Years)	965	16.5%	4,198	17.9%	14,764	17.6%
Baby Boomers (Age 50 to 74 Years)	1,850	31.6%	7,902	33.7%	28,409	33.9%
Silent Generation (Age 75 to 84 Years)	371	6.3%	1,443	6.2%	5,161	6.2%
G.I. Generation (Age 85 Years or Over)	185	3.2%	702	3.0%	2,572	3.1%



This report was produced using data from private and government sources deemed to be reliable. The information herein is provided without representation or warranty.

GRAPHIC PROFILE

2000-2010 Census, 2019 Estimates with 2024 Projections

Calculated using Weighted Block Centroid from Block Groups

Lat/Lon: 40.2917/-79.8901

RGRAP3

700 Worthington Ave

Clairton, PA 15025

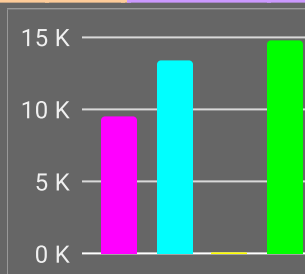
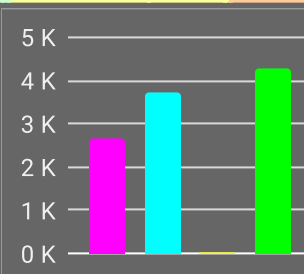
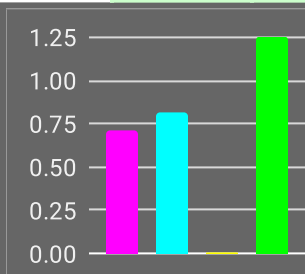
1 mi radius

3 mi radius

5 mi radius

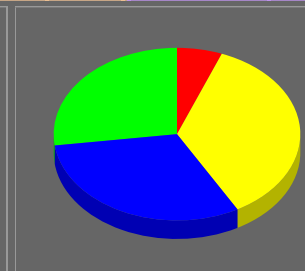
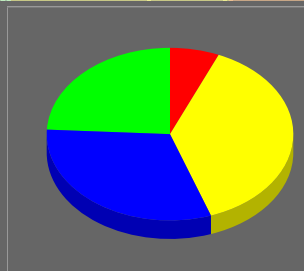
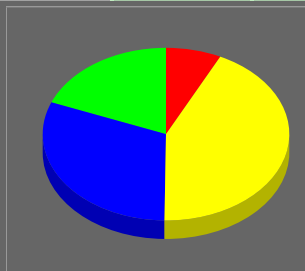
Household Type (2019)

Total Households	2,776	10,657	37,705
Family Households	1,524 54.9%	6,383 59.9%	22,796 60.5%
Family Households with Children	709 46.5%	2,655 41.6%	9,459 41.5%
Family Households No Children	816 53.5%	3,727 58.4%	13,336 58.5%
Non-Family Households	1,251 45.1%	4,275 40.1%	14,909 39.5%
Non-Family Households with Children	2 0.2%	19 0.4%	100 0.7%
Non-Family Households No Children	1,249 99.8%	4,256 99.6%	14,809 99.3%



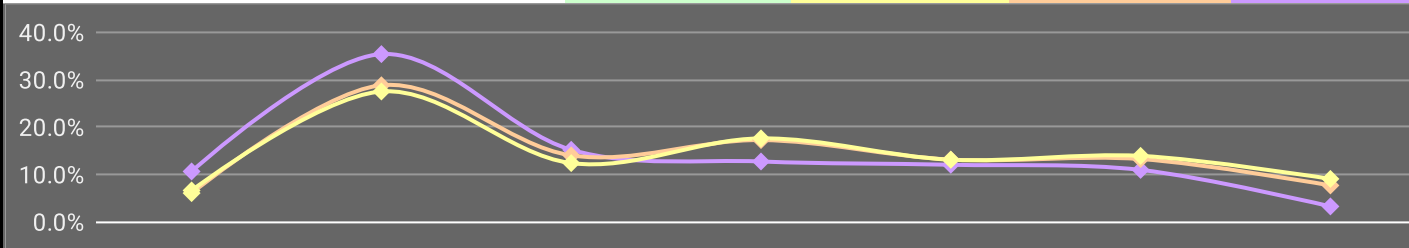
Education Attainment (2019)

Elementary or Some High School	304 7.3%	1,121 6.5%	3,650 5.9%
High School Graduate	1,801 42.9%	6,619 38.2%	22,148 35.9%
Some College or Associate Degree	1,293 30.8%	5,417 31.2%	19,145 31.1%
Bachelor or Graduate Degree	796 19.0%	4,192 24.2%	16,706 27.1%



Household Income (2019)

Estimated Average Household Income	\$48,828	\$68,058	\$73,153
Estimated Median Household Income	\$40,749	\$54,876	\$58,274
HH Income Under \$10,000	294 10.6%	643 6.0%	2,486 6.6%
HH Income \$10,000 to \$34,999	981 35.4%	3,068 28.8%	10,358 27.5%
HH Income \$35,000 to \$49,999	421 15.2%	1,491 14.0%	4,661 12.4%
HH Income \$50,000 to \$74,999	353 12.7%	1,836 17.2%	6,628 17.6%
HH Income \$75,000 to \$99,999	333 12.0%	1,396 13.1%	4,931 13.1%
HH Income \$100,000 to \$149,999	303 10.9%	1,409 13.2%	5,237 13.9%
HH Income \$150,000 or More	89 3.2%	815 7.6%	3,404 9.0%



This report was produced using data from private and government sources deemed to be reliable. The information herein is provided without representation or warranty.

EXPANDED PROFILE

2000-2010 Census, 2019 Estimates with 2024 Projections

Calculated using Weighted Block Centroid from Block Groups

Lat/Lon: 40.2917/-79.8901

RF5

700 Worthington Ave		1 mi radius		3 mi radius		5 mi radius	
Clairton, PA 15025							
Population							
Estimated Population (2019)	5,860		23,436		83,793		
Projected Population (2024)	6,125		23,177		82,872		
Census Population (2010)	6,078		23,974		85,088		
Census Population (2000)	7,278		26,258		92,924		
Projected Annual Growth (2019 to 2024)	265	0.9%	-259	-0.2%	-921	-0.2%	
Historical Annual Growth (2010 to 2019)	-218	-0.4%	-538	-0.3%	-1,295	-0.2%	
Historical Annual Growth (2000 to 2010)	-1,200	-1.6%	-2,284	-0.9%	-7,836	-0.8%	
Estimated Population Density (2019)	1,866	psm	829	psm	1,067	psm	
Trade Area Size	3.1	sq mi	28.3	sq mi	78.5	sq mi	
Households							
Estimated Households (2019)	2,776		10,657		37,705		
Projected Households (2024)	2,996		10,891		38,436		
Census Households (2010)	2,735		10,344		36,375		
Census Households (2000)	3,166		11,080		38,137		
Estimated Households with Children (2019)	711	25.6%	2,674	25.1%	9,560	25.4%	
Estimated Average Household Size (2019)	2.10		2.19		2.19		
Average Household Income							
Estimated Average Household Income (2019)	\$48,828		\$68,058		\$73,153		
Projected Average Household Income (2024)	\$53,439		\$82,297		\$89,796		
Estimated Average Family Income (2019)	\$65,706		\$85,978		\$93,589		
Median Household Income							
Estimated Median Household Income (2019)	\$40,749		\$54,876		\$58,274		
Projected Median Household Income (2024)	\$47,406		\$63,602		\$67,343		
Estimated Median Family Income (2019)	\$54,736		\$71,964		\$78,511		
Per Capita Income							
Estimated Per Capita Income (2019)	\$23,198		\$31,008		\$33,055		
Projected Per Capita Income (2024)	\$26,203		\$38,733		\$41,786		
Estimated Per Capita Income 5 Year Growth	\$3,005	13.0%	\$7,725	24.9%	\$8,731	26.4%	
Estimated Average Household Net Worth (2019)	\$336,003		\$521,896		\$580,724		
Daytime Demos (2019)							
Total Businesses	146		981		3,085		
Total Employees	1,234		9,800		31,597		
Company Headquarter Businesses	-	-	3	0.3%	15	0.5%	
Company Headquarter Employees	26	2.1%	1,871	19.1%	3,111	9.8%	
Employee Population per Business	8.5		10.0		10.2		
Residential Population per Business	40.3		23.9		27.2		

This report was produced using data from private and government sources deemed to be reliable. The information herein is provided without representation or warranty.

EXPANDED PROFILE

2000-2010 Census, 2019 Estimates with 2024 Projections

Calculated using Weighted Block Centroid from Block Groups

Lat/Lon: 40.2917/-79.8901

RF5

700 Worthington Ave

Clairton, PA 15025

1 mi radius

3 mi radius

5 mi radius

Race & Ethnicity

White (2019)	3,224	55.0%	19,686	84.0%	70,061	83.6%
Black or African American (2019)	2,361	40.3%	2,979	12.7%	10,406	12.4%
American Indian or Alaska Native (2019)	3	-	34	0.1%	140	0.2%
Asian (2019)	36	0.6%	193	0.8%	847	1.0%
Hawaiian or Pacific Islander (2019)	-	-	3	-	19	-
Other Race (2019)	33	0.6%	64	0.3%	287	0.3%
Two or More Races (2019)	204	3.5%	478	2.0%	2,032	2.4%
Not Hispanic or Latino Population (2019)	5,714	97.5%	23,056	98.4%	82,193	98.1%
Hispanic or Latino Population (2019)	146	2.5%	380	1.6%	1,600	1.9%
Not Hispanic or Latino Population (2024)	5,963	97.3%	22,748	98.1%	81,118	97.9%
Hispanic or Latino Population (2024)	162	2.7%	429	1.9%	1,754	2.1%
Not Hispanic or Latino Population (2010)	5,975	98.3%	23,734	99.0%	84,042	98.8%
Hispanic or Latino Population (2010)	103	1.7%	240	1.0%	1,046	1.2%
Not Hispanic or Latino Population (2000)	7,223	99.3%	26,105	99.4%	92,194	99.2%
Hispanic or Latino Population (2000)	55	0.7%	153	0.6%	730	0.8%
Projected Hispanic Annual Growth (2019 to 2024)	16	2.3%	49	2.6%	155	1.9%
Historic Hispanic Annual Growth (2000 to 2019)	92	8.8%	226	7.8%	870	6.3%

Age Distribution (2019)

Age Under 5	372	6.3%	1,227	5.2%	4,351	5.2%
Age 5 to 9 Years	308	5.3%	1,163	5.0%	4,359	5.2%
Age 10 to 14 Years	323	5.5%	1,248	5.3%	4,497	5.4%
Age 15 to 19 Years	333	5.7%	1,283	5.5%	4,774	5.7%
Age 20 to 24 Years	330	5.6%	1,167	5.0%	4,164	5.0%
Age 25 to 29 Years	414	7.1%	1,504	6.4%	5,208	6.2%
Age 30 to 34 Years	410	7.0%	1,599	6.8%	5,534	6.6%
Age 35 to 39 Years	367	6.3%	1,547	6.6%	5,431	6.5%
Age 40 to 44 Years	277	4.7%	1,263	5.4%	4,473	5.3%
Age 45 to 49 Years	321	5.5%	1,387	5.9%	4,861	5.8%
Age 50 to 54 Years	361	6.2%	1,506	6.4%	5,387	6.4%
Age 55 to 59 Years	444	7.6%	1,789	7.6%	6,528	7.8%
Age 60 to 64 Years	446	7.6%	1,840	7.8%	6,644	7.9%
Age 65 to 74 Years	599	10.2%	2,768	11.8%	9,849	11.8%
Age 75 to 84 Years	371	6.3%	1,443	6.2%	5,161	6.2%
Age 85 Years or Over	185	3.2%	702	3.0%	2,572	3.1%
Median Age	40.2		42.6		42.8	

Gender Age Distribution (2019)

Female Population	3,186	54.4%	12,206	52.1%	43,534	52.0%
Age 0 to 19 Years	650	20.4%	2,434	19.9%	8,832	20.3%
Age 20 to 64 Years	1,852	58.1%	6,963	57.0%	24,569	56.4%
Age 65 Years or Over	683	21.4%	2,809	23.0%	10,133	23.3%
Female Median Age	43.0		44.6		44.7	
Male Population	2,674	45.6%	11,231	47.9%	40,259	48.0%
Age 0 to 19 Years	686	25.6%	2,487	22.1%	9,148	22.7%
Age 20 to 64 Years	1,517	56.7%	6,639	59.1%	23,661	58.8%
Age 65 Years or Over	472	17.7%	2,104	18.7%	7,450	18.5%
Male Median Age	37.7		40.9		41.0	

This report was produced using data from private and government sources deemed to be reliable. The information herein is provided without representation or warranty.

EXPANDED PROFILE

2000-2010 Census, 2019 Estimates with 2024 Projections

Calculated using Weighted Block Centroid from Block Groups

Lat/Lon: 40.2917/-79.8901

RF5

700 Worthington Ave

Clairton, PA 15025

1 mi radius

3 mi radius

5 mi radius

Household Income Distribution (2019)

HH Income \$200,000 or More	19	0.7%	301	2.8%	1,389	3.7%
HH Income \$150,000 to \$199,999	70	2.5%	514	4.8%	2,016	5.3%
HH Income \$100,000 to \$149,999	303	10.9%	1,409	13.2%	5,237	13.9%
HH Income \$75,000 to \$99,999	333	12.0%	1,396	13.1%	4,931	13.1%
HH Income \$50,000 to \$74,999	353	12.7%	1,836	17.2%	6,628	17.6%
HH Income \$35,000 to \$49,999	421	15.2%	1,491	14.0%	4,661	12.4%
HH Income \$25,000 to \$34,999	481	17.3%	1,334	12.5%	3,668	9.7%
HH Income \$15,000 to \$24,999	310	11.2%	1,137	10.7%	4,464	11.8%
HH Income Under \$15,000	485	17.5%	1,239	11.6%	4,711	12.5%
HH Income \$35,000 or More	1,500	54.0%	6,947	65.2%	24,861	65.9%
HH Income \$75,000 or More	726	26.2%	3,620	34.0%	13,572	36.0%

Housing (2019)

Total Housing Units	3,229		11,723		41,146	
Housing Units Occupied	2,776	86.0%	10,657	90.9%	37,705	91.6%
Housing Units Owner-Occupied	1,703	61.3%	7,525	70.6%	26,764	71.0%
Housing Units, Renter-Occupied	1,073	38.7%	3,133	29.4%	10,941	29.0%
Housing Units, Vacant	453	16.3%	1,066	10.0%	3,441	9.1%

Marital Status (2019)

Never Married	2,247	46.3%	6,559	33.1%	22,956	32.5%
Currently Married	1,401	28.9%	8,603	43.5%	31,563	44.7%
Separated	244	5.0%	831	4.2%	2,268	3.2%
Widowed	438	9.0%	1,649	8.3%	6,379	9.0%
Divorced	527	10.8%	2,156	10.9%	7,420	10.5%

Household Type (2019)

Population Family	4,438	75.7%	18,443	78.7%	65,645	78.3%
Population Non-Family	1,393	23.8%	4,856	20.7%	16,890	20.2%
Population Group Quarters	29	0.5%	137	0.6%	1,258	1.5%
Family Households	1,524	54.9%	6,383	59.9%	22,796	60.5%
Non-Family Households	1,251	45.1%	4,275	40.1%	14,909	39.5%
Married Couple with Children	246	17.5%	1,512	17.6%	5,555	17.6%
Average Family Household Size	2.9		2.9		2.9	

Household Size (2019)

1 Person Households	1,116	40.2%	3,739	35.1%	13,174	34.9%
2 Person Households	866	31.2%	3,649	34.2%	13,024	34.5%
3 Person Households	371	13.4%	1,535	14.4%	5,366	14.2%
4 Person Households	257	9.2%	1,106	10.4%	3,922	10.4%
5 Person Households	108	3.9%	435	4.1%	1,481	3.9%
6 or More Person Households	58	2.1%	194	1.8%	738	2.0%

Household Vehicles (2019)

Households with 0 Vehicles Available	577	20.8%	1,189	11.2%	4,674	12.4%
Households with 1 Vehicles Available	1,086	39.1%	4,007	37.6%	13,789	36.6%
Households with 2 or More Vehicles Available	1,113	40.1%	5,462	51.2%	19,242	51.0%
Total Vehicles Available	3,721		17,344		60,627	
Average Vehicles Per Household	1.3		1.6		1.6	

This report was produced using data from private and government sources deemed to be reliable. The information herein is provided without representation or warranty.

EXPANDED PROFILE

2000-2010 Census, 2019 Estimates with 2024 Projections

Calculated using Weighted Block Centroid from Block Groups

Lat/Lon: 40.2917/-79.8901

RF5

700 Worthington Ave

Clairton, PA 15025

1 mi radius

3 mi radius

5 mi radius

Labor Force (2019)

Estimated Labor Population Age 16 Years or Over	4,804		19,568		69,733	
Estimated Civilian Employed	2,534	52.7%	11,530	58.9%	40,873	58.6%
Estimated Civilian Unemployed	244	5.1%	608	3.1%	2,178	3.1%
Estimated in Armed Forces	-	-	11	-	33	-
Estimated Not in Labor Force	2,027	42.2%	7,419	37.9%	26,650	38.2%
Unemployment Rate	5.1%		3.1%		3.1%	

Occupation (2019)

Occupation: Population Age 16 Years or Over	2,534		11,530		40,873	
Management, Business, Financial Operations	373	14.7%	1,713	14.9%	6,093	14.9%
Professional, Related	495	19.5%	2,345	20.3%	9,121	22.3%
Service	610	24.1%	2,196	19.0%	7,346	18.0%
Sales, Office	710	28.0%	2,930	25.4%	10,022	24.5%
Farming, Fishing, Forestry	-	-	6	-	29	-
Construct, Extraction, Maintenance	103	4.1%	881	7.6%	3,168	7.8%
Production, Transport Material Moving	241	9.5%	1,458	12.6%	5,093	12.5%
White Collar Workers	1,579	62.3%	6,988	60.6%	25,236	61.7%
Blue Collar Workers	955	37.7%	4,542	39.4%	15,637	38.3%

Consumer Expenditure (2019)

Total Household Expenditure	\$118.94 M		\$570.85 M		\$2.12 B	
Total Non-Retail Expenditure	\$62.92 M	52.9%	\$301.2 M	52.8%	\$1.12 B	52.8%
Total Retail Expenditure	\$56.03 M	47.1%	\$269.66 M	47.2%	\$999.7 M	47.2%
Apparel	\$4.1 M	3.4%	\$19.78 M	3.5%	\$73.62 M	3.5%
Contributions	\$3.68 M	3.1%	\$18.22 M	3.2%	\$68.18 M	3.2%
Education	\$3.21 M	2.7%	\$15.92 M	2.8%	\$60.42 M	2.9%
Entertainment	\$6.51 M	5.5%	\$31.83 M	5.6%	\$118.66 M	5.6%
Food and Beverages	\$17.79 M	15.0%	\$84.62 M	14.8%	\$313.27 M	14.8%
Furnishings and Equipment	\$4.06 M	3.4%	\$19.83 M	3.5%	\$73.89 M	3.5%
Gifts	\$2.71 M	2.3%	\$13.47 M	2.4%	\$50.54 M	2.4%
Health Care	\$10.46 M	8.8%	\$49.71 M	8.7%	\$183.4 M	8.7%
Household Operations	\$4.6 M	3.9%	\$22.29 M	3.9%	\$82.92 M	3.9%
Miscellaneous Expenses	\$2.25 M	1.9%	\$10.81 M	1.9%	\$40.17 M	1.9%
Personal Care	\$1.6 M	1.3%	\$7.68 M	1.3%	\$28.49 M	1.3%
Personal Insurance	\$777.88 K	0.7%	\$3.9 M	0.7%	\$14.63 M	0.7%
Reading	\$259.13 K	0.2%	\$1.25 M	0.2%	\$4.65 M	0.2%
Shelter	\$25.38 M	21.3%	\$120.44 M	21.1%	\$446.52 M	21.1%
Tobacco	\$833.77 K	0.7%	\$3.71 M	0.7%	\$13.48 M	0.6%
Transportation	\$21.4 M	18.0%	\$103.81 M	18.2%	\$384.68 M	18.2%
Utilities	\$9.33 M	7.8%	\$43.57 M	7.6%	\$160.18 M	7.6%

Educational Attainment (2019)

Adult Population Age 25 Years or Over	4,194		17,348		61,649	
Elementary (Grade Level 0 to 8)	116	2.8%	326	1.9%	1,025	1.7%
Some High School (Grade Level 9 to 11)	189	4.5%	795	4.6%	2,624	4.3%
High School Graduate	1,801	42.9%	6,619	38.2%	22,148	35.9%
Some College	897	21.4%	3,374	19.4%	11,948	19.4%
Associate Degree Only	396	9.4%	2,043	11.8%	7,197	11.7%
Bachelor Degree Only	536	12.8%	2,952	17.0%	10,955	17.8%
Graduate Degree	261	6.2%	1,240	7.1%	5,751	9.3%

This report was produced using data from private and government sources deemed to be reliable. The information herein is provided without representation or warranty.

EXPANDED PROFILE

2000-2010 Census, 2019 Estimates with 2024 Projections

Calculated using Weighted Block Centroid from Block Groups

Lat/Lon: 40.2917/-79.8901

RF5

700 Worthington Ave

Clairton, PA 15025

Units In Structure (2019)

	1 mi radius		3 mi radius		5 mi radius	
1 Detached Unit	1,980	72.4%	8,126	78.6%	28,280	77.7%
1 Attached Unit	292	10.7%	834	8.1%	2,573	7.1%
2 to 4 Units	192	7.0%	659	6.4%	1,782	4.9%
5 to 9 Units	78	2.9%	319	3.1%	1,516	4.2%
10 to 19 Units	102	3.7%	230	2.2%	1,042	2.9%
20 to 49 Units	40	1.5%	155	1.5%	849	2.3%
50 or More Units	90	3.3%	233	2.3%	1,381	3.8%
Mobile Home or Trailer	2	-	102	1.0%	282	0.8%
Other Structure	-	-	-	-	-	-

Homes Built By Year (2019)

Homes Built 2010 or later	35	1.3%	193	1.9%	780	2.1%
Homes Built 2000 to 2009	54	2.0%	328	3.2%	1,347	3.7%
Homes Built 1990 to 1999	31	1.1%	333	3.2%	1,515	4.2%
Homes Built 1980 to 1989	61	2.2%	515	5.0%	2,064	5.7%
Homes Built 1970 to 1979	125	4.6%	988	9.5%	4,424	12.2%
Homes Built 1960 to 1969	119	4.4%	935	9.0%	4,727	13.0%
Homes Built 1950 to 1959	717	26.2%	2,633	25.5%	8,971	24.7%
Homes Built Before 1949	1,633	59.7%	4,733	45.8%	13,877	38.2%

Home Values (2019)

Home Values \$1,000,000 or More	5	0.3%	24	0.3%	75	0.3%
Home Values \$500,000 to \$999,999	50	2.9%	248	3.4%	901	3.5%
Home Values \$400,000 to \$499,999	39	2.3%	184	2.5%	639	2.5%
Home Values \$300,000 to \$399,999	98	5.8%	559	7.6%	1,976	7.7%
Home Values \$200,000 to \$299,999	202	11.9%	975	13.3%	3,846	14.9%
Home Values \$150,000 to \$199,999	172	10.1%	886	12.1%	3,848	14.9%
Home Values \$100,000 to \$149,999	198	11.7%	1,314	17.9%	5,109	19.8%
Home Values \$70,000 to \$99,999	206	12.2%	1,236	16.8%	4,136	16.0%
Home Values \$50,000 to \$69,999	232	13.7%	797	10.9%	2,467	9.6%
Home Values \$25,000 to \$49,999	358	21.1%	942	12.8%	2,549	9.9%
Home Values Under \$25,000	141	8.3%	337	4.6%	1,148	4.5%
Owner-Occupied Median Home Value	\$83,721		\$114,198		\$125,144	
Renter-Occupied Median Rent	\$583		\$598		\$577	

Transportation To Work (2019)

Drive to Work Alone	2,241	75.5%	9,192	76.6%	32,589	76.0%
Drive to Work in Carpool	248	8.4%	1,010	8.4%	3,659	8.5%
Travel to Work by Public Transportation	292	9.8%	877	7.3%	3,262	7.6%
Drive to Work on Motorcycle	-	-	7	-	26	-
Walk or Bicycle to Work	94	3.2%	436	3.6%	1,570	3.7%
Other Means	17	0.6%	78	0.7%	329	0.8%
Work at Home	75	2.5%	392	3.3%	1,443	3.4%

Travel Time (2019)

Travel to Work in 14 Minutes or Less	454	15.3%	2,338	19.5%	8,741	20.4%
Travel to Work in 15 to 29 Minutes	781	26.3%	3,690	30.8%	12,041	28.1%
Travel to Work in 30 to 59 Minutes	886	29.8%	3,729	31.1%	13,886	32.4%
Travel to Work in 60 Minutes or More	354	11.9%	1,394	11.6%	4,784	11.2%
Average Minutes Travel to Work	27.5		25.6		26.2	

This report was produced using data from private and government sources deemed to be reliable. The information herein is provided without representation or warranty.