

COCCA DEVELOPMENT

RETAIL SPACE FOR LEASE

14770 SNOW ROAD

BROOK PARK, OH 44142



- Former Eagle Rental Purchase—interior completely remodeled 2015; new and updated mechanicals
- Ample parking with approximately 60 parking spaces
- Adjacent to Giant Eagle parking lot
- Brook Park is approximately 14 minutes from downtown Cleveland via I-71

AVAILABLE AREA—\$12/square foot NNN:

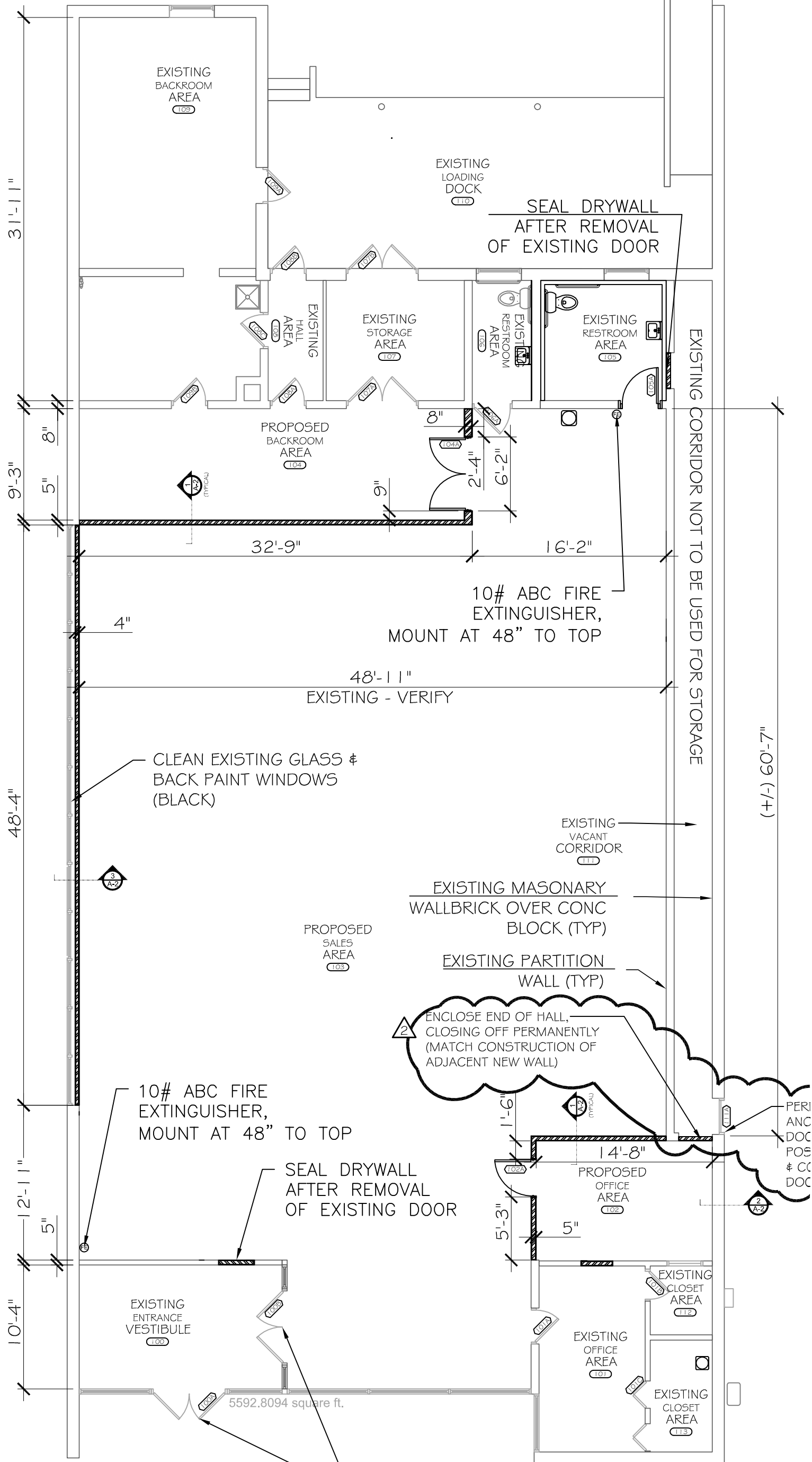
Approximately 5,400 square feet*

*Can be split

NNN: Base rent plus prorata share of Real Estate Taxes, Insurance, and Common Area expenses, including but not limited to snow removal, lawn care, and parking lot maintenance. Tenant pays separately metered utilities for gas, electric, water, sewer, & trash removal.

CALL 330-729-1010 FOR MORE INFORMATION

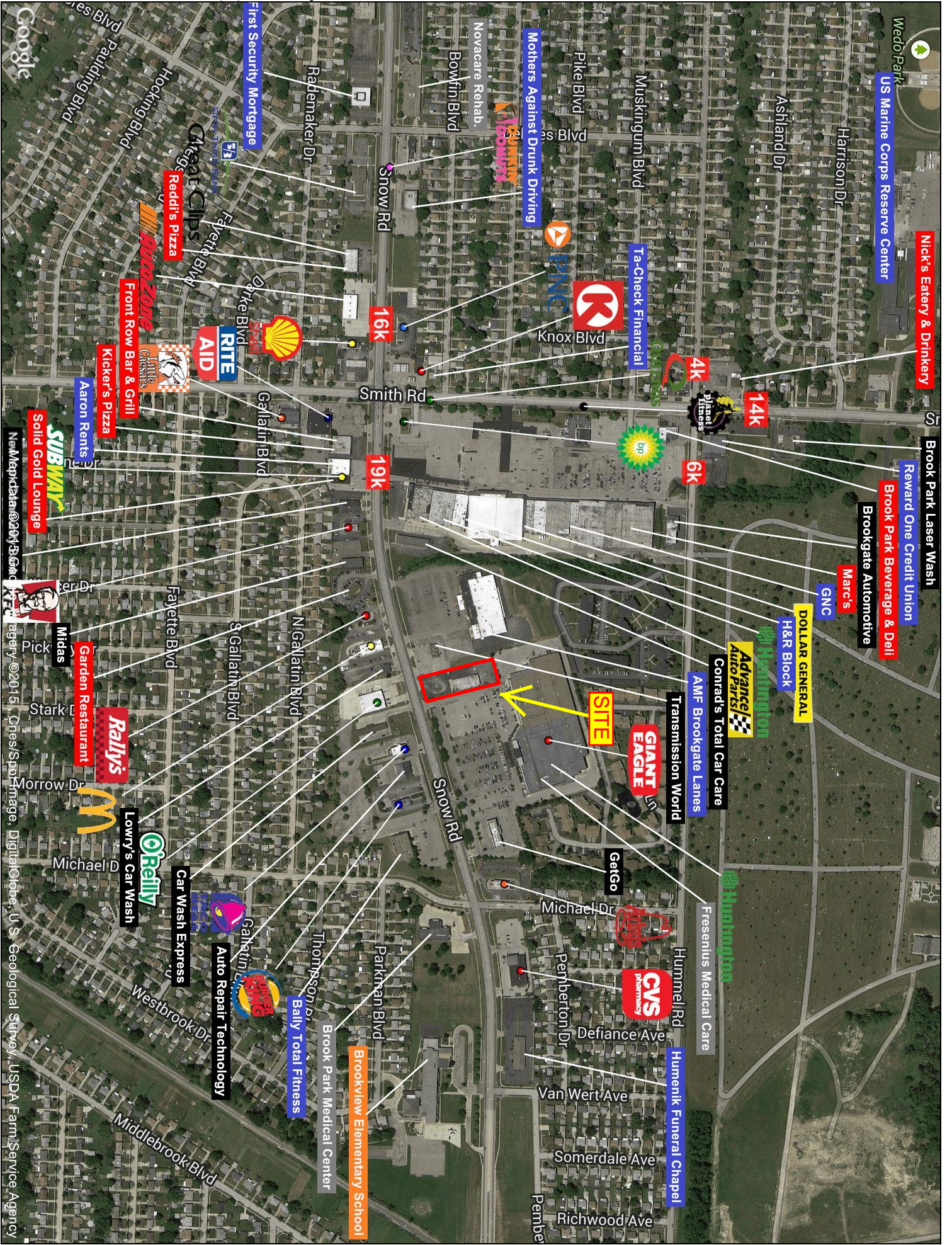
www.coccadevelopment.com



THESE DOORS TO REMAIN UNLOCKED WHEN BUILDING IS OCCUPIED.

PROPOSED FLOOR PLAN

SCALE = 1/8" = 1'



This map was produced using data from private and government sources deemed to be reliable. The information herein is provided without representation or warranty.

COCCA DEVELOPMENT, LTD

14710 Snow Road

Brook Park, OH 44142

AT A GLANCE

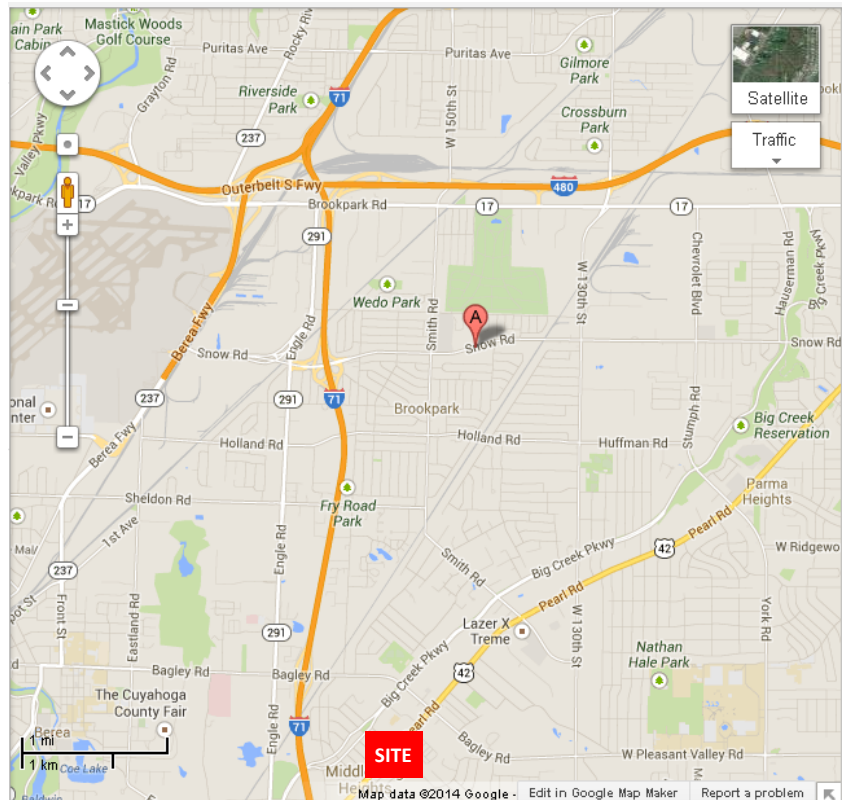
- ◆ Brook Park became a city in 1950; located in Cuyahoga County, Ohio it is a suburb of Cleveland
- ◆ The city shot to national attention when 21 Marines of the 25th Marine Regiment, 3rd battalion, 4th division headquartered in the city were killed in combat in Iraq on August 1, 2005 and August 3, 2005. The unit lost 48 Marines during the course of the deployment
- ◆ Brook Park is the hometown of Melanie Murphy who was crowned Miss Ohio for 2006 and represented Ohio in Miss America
- ◆ Brook Park Mayor Thomas J. Coyne Jr. was recently re-elected on November 5, 2013, after 12 years out of the office, which had been held by Mark J. Elliot. Coyne had been the Mayor of Brook Park from 1981 to 2002.

14710 Snow Road

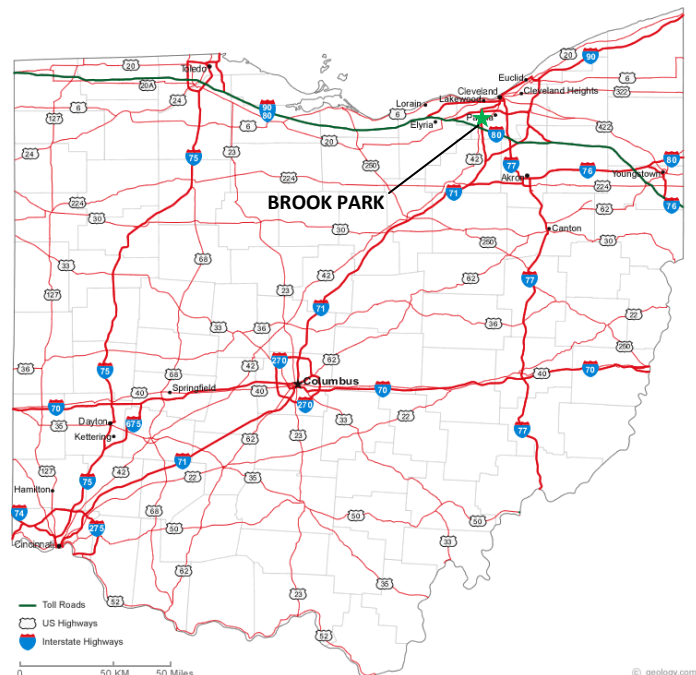
Brook Park, OH 44142

The site is located on Snow Road, 1 mile east of I-71 and 2 miles from I-480.

The average daily traffic count on Snow Road in front of the center is approximately 19,000.



The location is approximately 3 miles east of Cleveland Hopkins International Airport and 14 minutes from downtown Cleveland via I-71, which has 3 major sports teams: Cleveland Cavaliers of the NBA; Cleveland Indians of the MLB; and Cleveland Browns of the NFL, and is home to the Rock and Roll Hall of Fame and JACK Casino, along with many other major attractions.



GRAPHIC PROFILE

2000-2010 Census, 2017 Estimates with 2022 Projections

Calculated using Weighted Block Centroid from Block Groups

Lat/Lon: 41.4049/-81.7992

RGRAP3

14770 Snow Rd

Brook Park, OH 44142

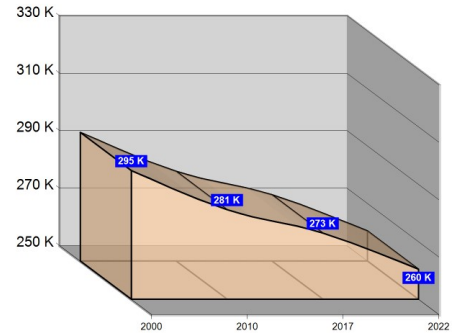
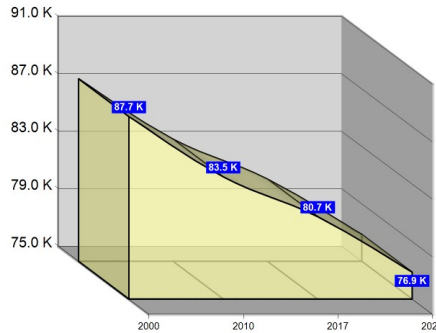
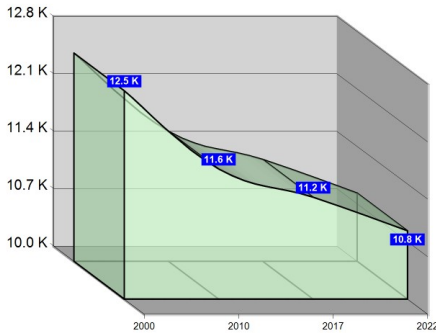
1 mi radius

3 mi radius

5 mi radius

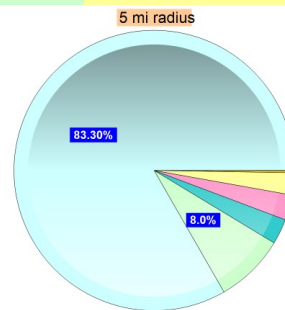
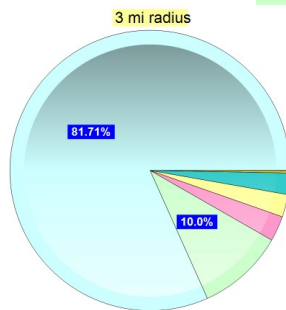
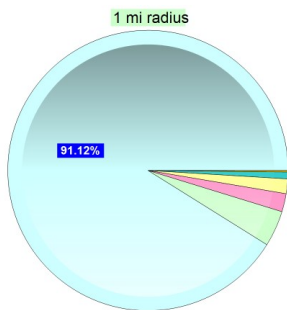
Population

Estimated Population (2017)	11,241	80,724	273,053
Projected Population (2022)	10,830	76,861	260,479
Census Population (2010)	11,585	83,501	281,219
Census Population (2000)	12,538	87,700	294,789
Projected Annual Growth (2017-2022)	-411 -0.7%	-3,863 -1.0%	-12,574 -0.9%
Historical Annual Growth (2010-2017)	-344 -1.2%	-2,777 -0.7%	-8,166 -0.7%
Historical Annual Growth (2000-2010)	-953 -0.8%	-4,199 -0.5%	-13,570 -0.5%
Estimated Population Density (2017)	3,580 <i>psm</i>	2,856 <i>psm</i>	3,478 <i>psm</i>
Trade Area Size	3.1 <i>sq mi</i>	28.3 <i>sq mi</i>	78.5 <i>sq mi</i>



Race and Ethnicity (2017)

	1 mi radius	3 mi radius	5 mi radius
Not Hispanic or Latino Population	10,777 95.9%	74,878 92.8%	250,924 91.9%
White	9,929 92.1%	63,137 84.3%	216,839 86.4%
Black or African American	439 4.1%	7,693 10.3%	20,631 8.2%
American Indian or Alaska Native	19 0.2%	162 0.2%	494 0.2%
Asian	236 2.2%	2,309 3.1%	7,852 3.1%
Hawaiian or Pacific Islander	- -	20 -	52 -
Other Race	10 0.1%	44 0.1%	131 0.1%
Two or More Races	144 1.3%	1,513 2.0%	4,924 2.0%
Hispanic or Latino Population	464 4.1%	5,846 7.2%	22,129 8.1%
White	313 67.5%	2,821 48.3%	10,620 48.0%
Black or African American	26 5.5%	394 6.7%	1,342 6.1%
American Indian or Alaska Native	1 0.2%	49 0.8%	162 0.7%
Asian	- -	42 0.7%	108 0.5%
Hispanic Hawaiian or Pacific Islander	- -	6 0.1%	21 0.1%
Other Race	77 16.7%	1,955 33.4%	7,847 35.5%
Two or More Races	47 10.1%	578 9.9%	2,030 9.2%



White Black or African American American Indian or Alaska Native Asian Hawaiian or Pacific Islander Other Race 2+ Races

This report was produced using data from private and government sources deemed to be reliable. The information herein is provided without representation or warranty.

GRAPHIC PROFILE

2000-2010 Census, 2017 Estimates with 2022 Projections

Calculated using Weighted Block Centroid from Block Groups

Lat/Lon: 41.4049/-81.7992

RGRAP3

14770 Snow Rd

Brook Park, OH 44142

1 mi radius

3 mi radius

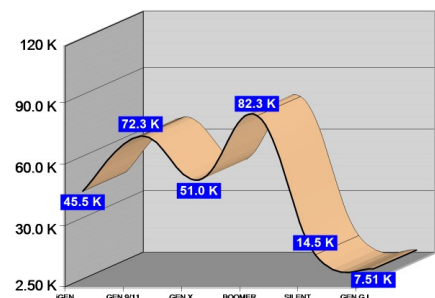
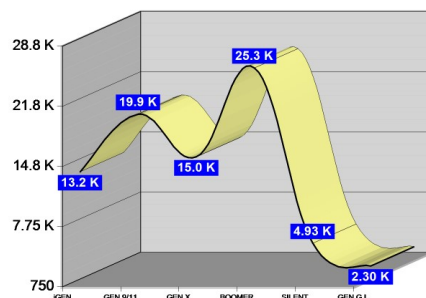
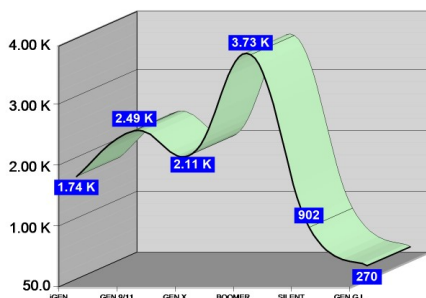
5 mi radius

Age Distribution (2017)

	1 mi radius	3 mi radius	5 mi radius
Age Under 5 Years	480 4.3%	4,531 5.6%	15,764 5.8%
Age 5 to 9 Years	564 5.0%	4,342 5.4%	14,644 5.4%
Age 10 to 14 Years	692 6.2%	4,372 5.4%	15,057 5.5%
Age 15 to 19 Years	689 6.1%	4,512 5.6%	16,275 6.0%
Age 20 to 24 Years	586 5.2%	4,655 5.8%	17,496 6.4%
Age 25 to 29 Years	574 5.1%	5,218 6.5%	18,834 6.9%
Age 30 to 34 Years	638 5.7%	5,551 6.9%	19,731 7.2%
Age 35 to 39 Years	667 5.9%	5,080 6.3%	17,664 6.5%
Age 40 to 44 Years	694 6.2%	4,690 5.8%	16,158 5.9%
Age 45 to 49 Years	749 6.7%	5,215 6.5%	17,179 6.3%
Age 50 to 54 Years	852 7.6%	5,722 7.1%	18,867 6.9%
Age 55 to 59 Years	772 6.9%	5,732 7.1%	19,520 7.1%
Age 60 to 64 Years	757 6.7%	5,442 6.7%	17,733 6.5%
Age 65 to 69 Years	726 6.5%	4,754 5.9%	14,960 5.5%
Age 70 to 74 Years	629 5.6%	3,678 4.6%	11,194 4.1%
Age 75 to 79 Years	579 5.1%	2,924 3.6%	8,382 3.1%
Age 80 to 84 Years	323 2.9%	2,002 2.5%	6,086 2.2%
Age 85 Years or Over	270 2.4%	2,305 2.9%	7,507 2.7%
Median Age	44.1	41.5	39.9

Generation (2017)

	1 mi radius	3 mi radius	5 mi radius
iGeneration (Age Under 15 Years)	1,736 15.4%	13,245 16.4%	45,465 16.7%
Generation 9/11 Millennials (Age 15 to 34 Years)	2,488 22.1%	19,936 24.7%	72,336 26.5%
Gen Xers (Age 35 to 49 Years)	2,110 18.8%	14,985 18.6%	51,002 18.7%
Baby Boomers (Age 50 to 74 Years)	3,735 33.2%	25,327 31.4%	82,274 30.1%
Silent Generation (Age 75 to 84 Years)	902 8.0%	4,927 6.1%	14,468 5.3%
G.I. Generation (Age 85 Years or Over)	270 2.4%	2,305 2.9%	7,507 2.7%



This report was produced using data from private and government sources deemed to be reliable. The information herein is provided without representation or warranty.

GRAPHIC PROFILE

2000-2010 Census, 2017 Estimates with 2022 Projections

Calculated using Weighted Block Centroid from Block Groups

Lat/Lon: 41.4049/-81.7992

RGRAP3

14770 Snow Rd

Brook Park, OH 44142

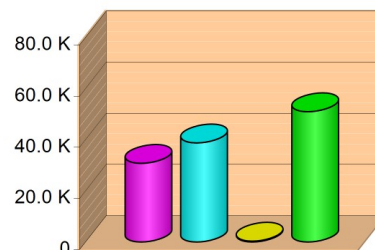
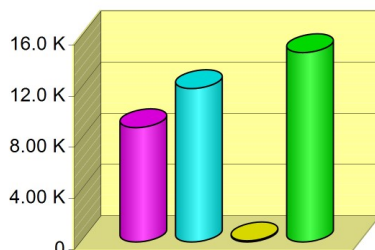
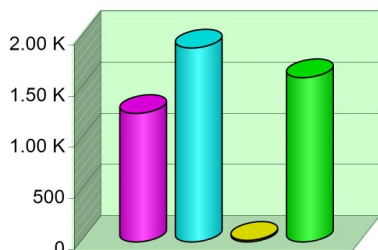
1 mi radius

3 mi radius

5 mi radius

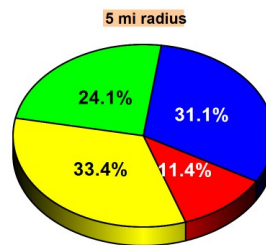
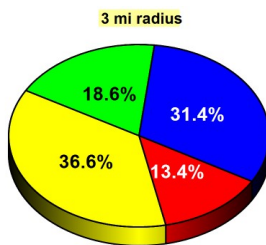
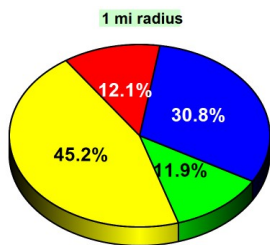
Household Type (2017)

	1 mi radius	3 mi radius	5 mi radius
Total Households	4,775	35,855	120,847
Family Households	3,153 39.7%	20,947 33.5%	69,535 32.1%
Family Households with Children	1,256 39.9%	8,946 42.7%	30,779 44.3%
Family Households No Children	1,896 60.1%	12,002 57.3%	38,757 55.7%
Non-Family Households	1,622 39.7%	14,908 33.5%	51,312 32.1%
Non-Family Households with Children	16 1.0%	94 0.6%	345 0.7%
Non-Family Households No Children	1,606 99.0%	14,814 99.4%	50,966 99.3%



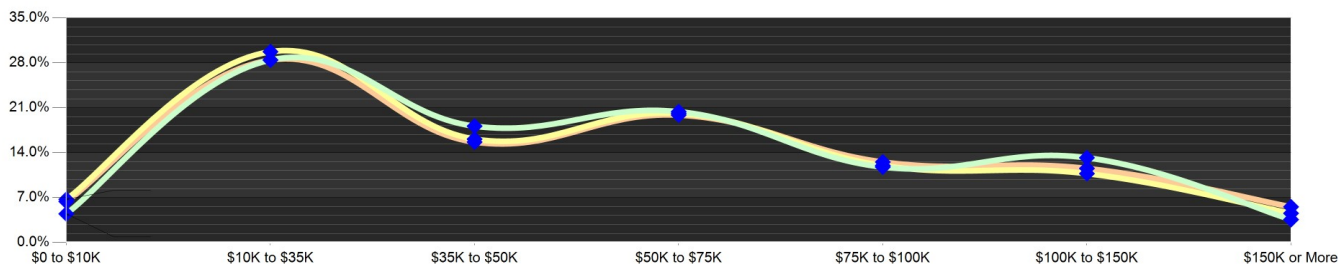
Education Attainment (2017)

	1 mi radius	3 mi radius	5 mi radius
Elementary or Some High School	993 12.1%	7,796 13.4%	22,118 11.4%
High School Graduate	3,723 45.2%	21,315 36.6%	64,645 33.4%
Some College or Associate Degree	2,538 30.8%	18,335 31.4%	60,329 31.1%
Bachelor or Graduate Degree	975 11.9%	10,866 18.6%	46,724 24.1%



Household Income (2017)

	1 mi radius	3 mi radius	5 mi radius
Estimated Average Household Income	\$59,087	\$56,224	\$60,129
Estimated Median Household Income	\$49,759	\$49,109	\$51,373
HH Income Under \$10,000	213 4.5%	2,411 6.7%	7,714 6.4%
HH Income \$10,000 to \$34,999	1,359 28.5%	10,667 29.7%	34,376 28.4%
HH Income \$35,000 to \$49,999	866 18.1%	5,779 16.1%	18,924 15.7%
HH Income \$50,000 to \$74,999	974 20.4%	7,217 20.1%	24,006 19.9%
HH Income \$75,000 to \$99,999	631 13.2%	3,852 10.7%	13,955 11.5%
HH Income \$100,000 to \$149,999	631 13.2%	3,852 10.7%	13,955 11.5%
HH Income \$150,000 or More	170 3.6%	1,631 4.5%	6,708 5.6%



This report was produced using data from private and government sources deemed to be reliable. The information herein is provided without representation or warranty.

EXPANDED PROFILE

2000-2010 Census, 2017 Estimates with 2022 Projections

Calculated using Weighted Block Centroid from Block Groups

Lat/Lon: 41.4049/-81.7992

RF5

14770 Snow Rd Brook Park, OH 44142	1 mi radius	3 mi radius	5 mi radius
Population			
Estimated Population (2017)	11,241	80,724	273,053
Projected Population (2022)	10,830	76,861	260,479
Census Population (2010)	11,585	83,501	281,219
Census Population (2000)	12,538	87,700	294,789
Projected Annual Growth (2017 to 2022)	-411 -0.7%	-3,863 -1.0%	-12,574 -0.9%
Historical Annual Growth (2010 to 2017)	-344 -0.4%	-2,777 -0.5%	-8,166 -0.4%
Historical Annual Growth (2000 to 2010)	-953 -0.8%	-4,199 -0.5%	-13,570 -0.5%
Estimated Population Density (2017)	3,580 <i>psm</i>	2,856 <i>psm</i>	3,478 <i>psm</i>
Trade Area Size	3.14 <i>sq mi</i>	28.26 <i>sq mi</i>	78.51 <i>sq mi</i>
Households			
Estimated Households (2017)	4,775	35,855	120,847
Projected Households (2022)	4,753	35,214	118,862
Census Households (2010)	4,778	36,041	120,853
Census Households (2000)	4,906	36,881	124,611
Estimated Households with Children (2017)	1,273 26.6%	9,040 25.2%	31,124 25.8%
Estimated Average Household Size (2017)	2.35	2.22	2.22
Average Household Income			
Estimated Average Household Income (2017)	\$59,087	\$56,224	\$60,129
Projected Average Household Income (2022)	\$70,722	\$68,596	\$73,405
Estimated Average Family Income (2017)	\$69,965	\$67,731	\$73,928
Median Household Income			
Estimated Median Household Income (2017)	\$49,759	\$49,109	\$51,373
Projected Median Household Income (2022)	\$59,540	\$58,568	\$61,123
Estimated Median Family Income (2017)	\$63,846	\$62,008	\$66,599
Per Capita Income			
Estimated Per Capita Income (2017)	\$25,108	\$25,082	\$26,711
Projected Per Capita Income (2022)	\$31,045	\$31,542	\$33,600
Estimated Per Capita Income 5 Year Growth	\$5,937 23.6%	\$6,459 25.8%	\$6,889 25.8%
Estimated Average Household Net Worth (2017)	\$296,797	\$309,273	\$340,722
Daytime Demos (2017)			
Total Businesses	417	3,599	9,800
Total Employees	5,462	67,195	146,225
Company Headquarter Businesses	6 1.6%	54 1.5%	81 0.8%
Company Headquarter Employees	369 6.8%	6,620 9.9%	14,786 10.1%
Employee Population per Business	13.1	18.7	14.9
Residential Population per Business	26.9	22.4	27.9

This report was produced using data from private and government sources deemed to be reliable. The information herein is provided without representation or warranty.

EXPANDED PROFILE

2000-2010 Census, 2017 Estimates with 2022 Projections

Calculated using Weighted Block Centroid from Block Groups

Lat/Lon: 41.4049/-81.7992

RF5

14770 Snow Rd

Brook Park, OH 44142

Race & Ethnicity

	1 mi radius		3 mi radius		5 mi radius	
White (2017)	10,242	91.1%	65,958	81.7%	227,459	83.3%
Black or African American (2017)	465	4.1%	8,087	10.0%	21,973	8.0%
American Indian or Alaska Native (2017)	20	0.2%	211	0.3%	656	0.2%
Asian (2017)	236	2.1%	2,352	2.9%	7,960	2.9%
Hawaiian or Pacific Islander (2017)	-	-	26	-	73	-
Other Race (2017)	88	0.8%	1,999	2.5%	7,978	2.9%
Two or More Races (2017)	190	1.7%	2,091	2.6%	6,954	2.5%
Not Hispanic or Latino Population (2017)	10,777	95.9%	74,878	92.8%	250,924	91.9%
Hispanic or Latino Population (2017)	464	4.1%	5,846	7.2%	22,129	8.1%
Not Hispanic or Latino Population (2022)	10,293	95.0%	70,428	91.6%	235,962	90.6%
Hispanic or Latino Population (2022)	538	5.0%	6,433	8.4%	24,517	9.4%
Not Hispanic or Latino Population (2010)	11,186	96.6%	78,185	93.6%	261,092	92.8%
Hispanic or Latino Population (2010)	399	3.4%	5,316	6.4%	20,127	7.2%
Not Hispanic or Latino Population (2000)	12,303	98.1%	84,950	96.9%	283,904	96.3%
Hispanic or Latino Population (2000)	235	1.9%	2,751	3.1%	10,886	3.7%
Projected Hispanic Annual Growth (2017 to 2022)	74	3.2%	587	2.0%	2,388	2.2%
Historic Hispanic Annual Growth (2000 to 2017)	229	5.7%	3,095	6.6%	11,244	6.1%

Age Distribution (2017)

Age Under 5	480	4.3%	4,531	5.6%	15,764	5.8%
Age 5 to 9 Years	564	5.0%	4,342	5.4%	14,644	5.4%
Age 10 to 14 Years	692	6.2%	4,372	5.4%	15,057	5.5%
Age 15 to 19 Years	689	6.1%	4,512	5.6%	16,275	6.0%
Age 20 to 24 Years	586	5.2%	4,655	5.8%	17,496	6.4%
Age 25 to 29 Years	574	5.1%	5,218	6.5%	18,834	6.9%
Age 30 to 34 Years	638	5.7%	5,551	6.9%	19,731	7.2%
Age 35 to 39 Years	667	5.9%	5,080	6.3%	17,664	6.5%
Age 40 to 44 Years	694	6.2%	4,690	5.8%	16,158	5.9%
Age 45 to 49 Years	749	6.7%	5,215	6.5%	17,179	6.3%
Age 50 to 54 Years	852	7.6%	5,722	7.1%	18,867	6.9%
Age 55 to 59 Years	772	6.9%	5,732	7.1%	19,520	7.1%
Age 60 to 64 Years	757	6.7%	5,442	6.7%	17,733	6.5%
Age 65 to 74 Years	1,355	12.1%	8,432	10.4%	26,154	9.6%
Age 75 to 84 Years	902	8.0%	4,927	6.1%	14,468	5.3%
Age 85 Years or Over	270	2.4%	2,305	2.9%	7,507	2.7%
Median Age	44.1		41.5		39.9	

Gender Age Distribution (2017)

Female Population	5,730	51.0%	42,050	52.1%	140,830	51.6%
Age 0 to 19 Years	1,146	20.0%	8,706	20.7%	30,010	21.3%
Age 20 to 64 Years	3,089	53.9%	24,003	57.1%	82,136	58.3%
Age 65 Years or Over	1,495	26.1%	9,341	22.2%	28,684	20.4%
Female Median Age	46.5		43.4		41.7	
Male Population	5,511	49.0%	38,675	47.9%	132,223	48.4%
Age 0 to 19 Years	1,280	23.2%	9,051	23.4%	31,730	24.0%
Age 20 to 64 Years	3,200	58.1%	23,301	60.2%	81,048	61.3%
Age 65 Years or Over	1,031	18.7%	6,323	16.3%	19,445	14.7%
Male Median Age	41.7		39.4		38.1	

This report was produced using data from private and government sources deemed to be reliable. The information herein is provided without representation or warranty.

EXPANDED PROFILE

2000-2010 Census, 2017 Estimates with 2022 Projections

Calculated using Weighted Block Centroid from Block Groups

Lat/Lon: 41.4049/-81.7992

RF5

14770 Snow Rd Brook Park, OH 44142	1 mi radius		3 mi radius		5 mi radius	
Household Income Distribution (2017)						
HH Income \$200,000 or More	48	1.0%	547	1.5%	2,560	2.1%
HH Income \$150,000 to \$199,999	123	2.6%	1,084	3.0%	4,148	3.4%
HH Income \$100,000 to \$149,999	631	13.2%	3,852	10.7%	13,955	11.5%
HH Income \$75,000 to \$99,999	562	11.8%	4,298	12.0%	15,163	12.5%
HH Income \$50,000 to \$74,999	974	20.4%	7,217	20.1%	24,006	19.9%
HH Income \$35,000 to \$49,999	866	18.1%	5,779	16.1%	18,924	15.7%
HH Income \$25,000 to \$34,999	665	13.9%	4,158	11.6%	13,788	11.4%
HH Income \$15,000 to \$24,999	487	10.2%	4,517	12.6%	14,261	11.8%
HH Income Under \$15,000	420	8.8%	4,403	12.3%	14,042	11.6%
HH Income \$35,000 or More	3,203	67.1%	22,777	63.5%	78,756	65.2%
HH Income \$75,000 or More	1,363	28.5%	9,781	27.3%	35,827	29.6%
Housing (2017)						
Total Housing Units	4,979		38,296		130,155	
Housing Units Occupied	4,775	95.9%	35,855	93.6%	120,847	92.8%
Housing Units Owner-Occupied	3,939	82.5%	24,979	69.7%	80,147	66.3%
Housing Units, Renter-Occupied	836	17.5%	10,876	30.3%	40,700	33.7%
Housing Units, Vacant	204	4.1%	2,441	6.4%	9,308	7.2%
Marital Status (2017)						
Never Married	2,954	31.1%	23,466	34.8%	81,013	35.6%
Currently Married	4,058	42.7%	27,278	40.4%	93,754	41.2%
Separated	274	2.9%	2,210	3.3%	7,176	3.2%
Widowed	873	9.2%	5,068	7.5%	14,940	6.6%
Divorced	1,346	14.2%	9,457	14.0%	30,704	13.5%
Household Type (2017)						
Population Family	9,379	83.4%	62,258	77.1%	208,271	76.3%
Population Non-Family	1,852	16.5%	17,180	21.3%	60,025	22.0%
Population Group Quarters	10	0.1%	1,286	1.6%	4,756	1.7%
Family Households	3,153	66.0%	20,947	58.4%	69,535	57.5%
Non-Family Households	1,622	34.0%	14,908	41.6%	51,312	42.5%
Married Couple with Children	780	19.2%	5,053	18.5%	18,287	19.5%
Average Family Household Size	3.0		3.0		3.0	
Household Size (2017)						
1 Person Households	1,431	30.0%	12,934	36.1%	43,864	36.3%
2 Person Households	1,680	35.2%	11,811	32.9%	39,014	32.3%
3 Person Households	746	15.6%	5,001	13.9%	16,935	14.0%
4 Person Households	550	11.5%	3,599	10.0%	12,629	10.5%
5 Person Households	234	4.9%	1,632	4.6%	5,416	4.5%
6 or More Person Households	135	2.8%	879	2.5%	2,989	2.5%
Household Vehicles (2017)						
Households with 0 Vehicles Available	202	4.2%	2,728	7.6%	9,728	8.0%
Households with 1 Vehicles Available	1,982	41.5%	15,333	42.8%	50,136	41.5%
Households with 2 or More Vehicles Available	2,591	54.3%	17,794	49.6%	60,983	50.5%
Total Vehicles Available	8,634		58,012		196,392	
Average Vehicles Per Household	1.8		1.6		1.6	

This report was produced using data from private and government sources deemed to be reliable. The information herein is provided without representation or warranty.

EXPANDED PROFILE

2000-2010 Census, 2017 Estimates with 2022 Projections

Calculated using Weighted Block Centroid from Block Groups

Lat/Lon: 41.4049/-81.7992

RF5

14770 Snow Rd Brook Park, OH 44142	1 mi radius	3 mi radius	5 mi radius
Labor Force (2017)			
Estimated Labor Population Age 16 Years or Over	9,355	66,592	224,601
Estimated Civilian Employed	5,644 60.3%	40,145 60.3%	140,988 62.8%
Estimated Civilian Unemployed	192 2.0%	1,823 2.7%	5,475 2.4%
Estimated in Armed Forces	3 -	25 -	67 -
Estimated Not in Labor Force	3,516 37.6%	24,599 36.9%	78,071 34.8%
Unemployment Rate	2.0%	2.7%	2.4%
Occupation (2010)			
Occupation: Population Age 16 Years or Over	5,642	40,138	141,070
Management, Business, Financial Operations	579 10.3%	5,347 13.3%	19,430 13.8%
Professional, Related	811 14.4%	6,668 16.6%	26,602 18.9%
Service	1,063 18.8%	7,500 18.7%	26,138 18.5%
Sales, Office	1,584 28.1%	10,651 26.5%	36,360 25.8%
Farming, Fishing, Forestry	10 0.2%	34 0.1%	173 0.1%
Construct, Extraction, Maintenance	565 10.0%	2,847 7.1%	9,810 7.0%
Production, Transport Material Moving	1,030 18.3%	7,091 17.7%	22,558 16.0%
White Collar Workers	2,975 52.7%	22,666 56.5%	82,392 58.4%
Blue Collar Workers	2,668 47.3%	17,472 43.5%	58,679 41.6%
Consumer Expenditure (2017)			
Total Household Expenditure	\$234 M	\$1.69 B	\$5.97 B
Total Non-Retail Expenditure	\$126 M 53.9%	\$912 M 53.9%	\$3.22 B 53.9%
Total Retail Expenditure	\$108 M 46.1%	\$781 M 46.1%	\$2.75 B 46.1%
Apparel	\$8.04 M 3.4%	\$58.4 M 3.4%	\$206 M 3.5%
Contributions	\$9.21 M 3.9%	\$67.6 M 4.0%	\$242 M 4.1%
Education	\$7.58 M 3.2%	\$56.4 M 3.3%	\$204 M 3.4%
Entertainment	\$13.0 M 5.6%	\$94.0 M 5.6%	\$332 M 5.6%
Food and Beverages	\$35.0 M 15.0%	\$253 M 14.9%	\$889 M 14.9%
Furnishings and Equipment	\$7.83 M 3.3%	\$56.6 M 3.3%	\$201 M 3.4%
Gifts	\$5.41 M 2.3%	\$39.5 M 2.3%	\$141 M 2.4%
Health Care	\$19.6 M 8.4%	\$142 M 8.4%	\$495 M 8.3%
Household Operations	\$6.23 M 2.7%	\$45.4 M 2.7%	\$162 M 2.7%
Miscellaneous Expenses	\$3.54 M 1.5%	\$25.6 M 1.5%	\$90.0 M 1.5%
Personal Care	\$3.04 M 1.3%	\$22.0 M 1.3%	\$77.7 M 1.3%
Personal Insurance	\$1.60 M 0.7%	\$11.7 M 0.7%	\$41.8 M 0.7%
Reading	\$517 K 0.2%	\$3.75 M 0.2%	\$13.3 M 0.2%
Shelter	\$48.1 M 20.6%	\$349 M 20.6%	\$1.23 B 20.6%
Tobacco	\$1.57 M 0.7%	\$11.4 M 0.7%	\$39.3 M 0.7%
Transportation	\$45.4 M 19.4%	\$326 M 19.2%	\$1.15 B 19.2%
Utilities	\$18.2 M 7.8%	\$132 M 7.8%	\$462 M 7.7%
Educational Attainment (2017)			
Adult Population Age 25 Years or Over	8,230	58,312	193,817
Elementary (Grade Level 0 to 8)	231 2.8%	2,040 3.5%	6,412 3.3%
Some High School (Grade Level 9 to 11)	762 9.3%	5,756 9.9%	15,706 8.1%
High School Graduate	3,723 45.2%	21,315 36.6%	64,645 33.4%
Some College	1,993 24.2%	13,640 23.4%	44,732 23.1%
Associate Degree Only	545 6.6%	4,696 8.1%	15,597 8.0%
Bachelor Degree Only	689 8.4%	7,169 12.3%	30,830 15.9%
Graduate Degree	287 3.5%	3,698 6.3%	15,894 8.2%

This report was produced using data from private and government sources deemed to be reliable. The information herein is provided without representation or warranty.

EXPANDED PROFILE

2000-2010 Census, 2017 Estimates with 2022 Projections

Calculated using Weighted Block Centroid from Block Groups

Lat/Lon: 41.4049/-81.7992

RF5

14770 Snow Rd

Brook Park, OH 44142

Units In Structure (2010)

	1 mi radius		3 mi radius		5 mi radius	
1 Detached Unit	4,123	86.3%	26,484	73.5%	85,413	70.7%
1 Attached Unit	128	2.7%	1,908	5.3%	5,162	4.3%
2 to 4 Units	121	2.5%	1,633	4.5%	9,216	7.6%
5 to 9 Units	110	2.3%	1,443	4.0%	4,232	3.5%
10 to 19 Units	111	2.3%	1,714	4.8%	5,829	4.8%
20 to 49 Units	52	1.1%	662	1.8%	2,557	2.1%
50 or More Units	124	2.6%	1,883	5.2%	8,108	6.7%
Mobile Home or Trailer	5	0.1%	125	0.3%	360	0.3%
Other Structure	-	-	-	-	28	-

Homes Built By Year (2010)

Homes Built 2005 or later	2	-	21	0.1%	98	0.1%
Homes Built 2000 to 2004	40	0.8%	1,040	2.9%	3,159	2.6%
Homes Built 1990 to 1999	170	3.6%	1,834	5.1%	5,055	4.2%
Homes Built 1980 to 1989	169	3.5%	1,494	4.1%	4,695	3.9%
Homes Built 1970 to 1979	241	5.0%	3,666	10.2%	12,722	10.5%
Homes Built 1960 to 1969	1,452	30.4%	7,459	20.7%	21,369	17.7%
Homes Built 1950 to 1959	2,243	46.9%	12,836	35.6%	34,131	28.2%
Homes Built Before 1949	450	9.4%	7,387	20.5%	39,230	32.5%

Home Values (2010)

Home Values \$1,000,000 or More	8	0.2%	65	0.3%	219	0.3%
Home Values \$500,000 to \$999,999	35	0.9%	223	0.9%	750	0.9%
Home Values \$400,000 to \$499,999	55	1.4%	357	1.4%	1,245	1.5%
Home Values \$300,000 to \$399,999	70	1.8%	563	2.2%	2,140	2.7%
Home Values \$200,000 to \$299,999	202	5.1%	1,857	7.4%	6,807	8.4%
Home Values \$150,000 to \$199,999	329	8.3%	3,062	12.1%	12,077	15.0%
Home Values \$100,000 to \$149,999	1,800	45.6%	8,241	32.7%	24,426	30.3%
Home Values \$70,000 to \$99,999	928	23.5%	5,715	22.7%	17,699	22.0%
Home Values \$50,000 to \$69,999	289	7.3%	2,753	10.9%	8,419	10.4%
Home Values \$25,000 to \$49,999	128	3.2%	1,578	6.3%	4,723	5.9%
Home Values Under \$25,000	89	2.2%	539	2.1%	1,611	2.0%
Owner-Occupied Median Home Value	\$110,943		\$110,618		\$117,146	
Renter-Occupied Median Rent	\$782		\$640		\$644	

Transportation To Work (2010)

Drive to Work Alone	4,660	85.9%	32,952	84.8%	109,808	82.8%
Drive to Work in Carpool	347	6.4%	2,853	7.3%	10,281	7.8%
Travel to Work by Public Transportation	150	2.8%	1,201	3.1%	4,962	3.7%
Drive to Work on Motorcycle	-	-	11	-	69	0.1%
Walk or Bicycle to Work	100	1.9%	785	2.0%	3,117	2.4%
Other Means	25	0.5%	167	0.4%	825	0.6%
Work at Home	139	2.6%	907	2.3%	3,565	2.7%

Travel Time (2010)

Travel to Work in 14 Minutes or Less	1,724	32.6%	10,335	27.2%	33,346	25.8%
Travel to Work in 15 to 29 Minutes	2,153	40.8%	16,386	43.2%	59,541	46.1%
Travel to Work in 30 to 59 Minutes	1,448	27.4%	11,130	29.3%	39,718	30.8%
Travel to Work in 60 Minutes or More	173	3.3%	1,414	3.7%	4,784	3.7%
Average Minutes Travel to Work	20.1		21.7		21.9	

This report was produced using data from private and government sources deemed to be reliable. The information herein is provided without representation or warranty.