

# COCCA DEVELOPMENT

## RETAIL SPACE FOR LEASE 3050 GUERNSEY STREET BELLAIRE, OH 43906



- Join Dollar Tree & Valley Rehab in the approximately 16,000 sq. ft. building located on Guernsey Street between Crescent Street and 31st Street
- Nearly 16,000 cars travel thru Bellaire daily with its close proximity to the Ohio River and the West Virginia border
- Bellaire is rich in history dating back to the Revolutionary War and playing a significant part in the Civil War as well as being the site for filming of several major motion pictures

### AVAILABLE SUITE AREA—\$8/square foot NNN:

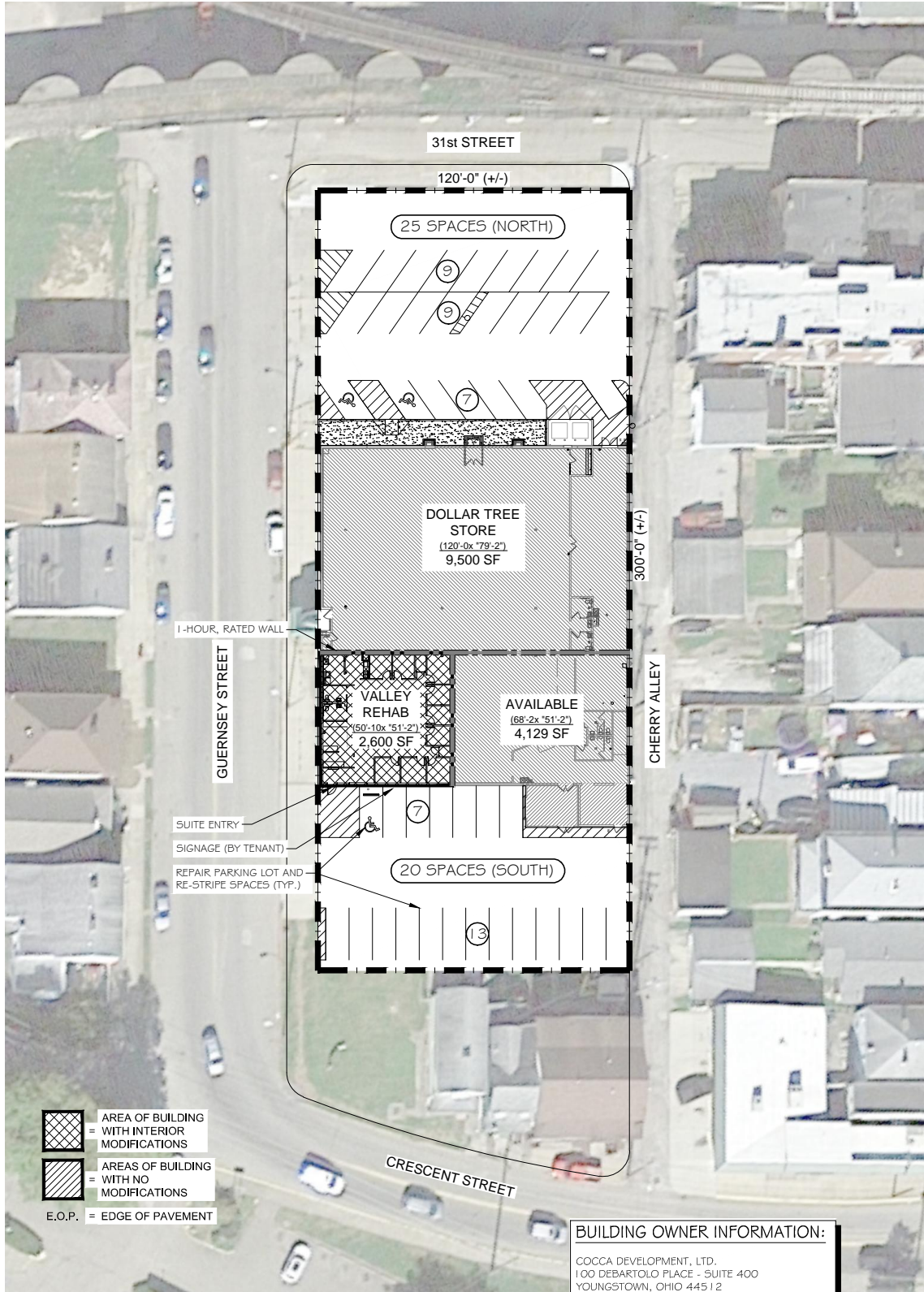
Approximately 4,260 square feet\*

\*Can be reduced for smaller space per needs

NNN: Base rent plus prorata share of Real Estate Taxes, Insurance, and Common Area expenses, including but not limited to snow removal, lawn care, and parking lot maintenance. Tenant pays separately metered utilities for gas, electric, water, sewer, & trash removal.

CALL 330-729-1010 FOR MORE INFORMATION

[www.coccadevelopment.com](http://www.coccadevelopment.com)



-  AREA OF BUILDING WITH INTERIOR MODIFICATIONS
-  AREAS OF BUILDING WITH NO MODIFICATIONS
- E.O.P. = EDGE OF PAVEMENT

**BUILDING OWNER INFORMATION:**  
 COCCA DEVELOPMENT, LTD.  
 100 DEBARTOLO PLACE - SUITE 400  
 YOUNGSTOWN, OHIO 44512  
 PH: 330-729-1010 / FAX: 330-729-1008

**NOTE:**  
 BUILDING AND PARKING LOT ARE EXISTING, THESE DRAWINGS ARE FOR BUILDING MODIFICATIONS, INTERIOR FINISHING & ( WHERE APPLICABLE ) PARKING LOT MODIFICATIONS ONLY.

 **GENERAL SITE PLAN**  
 SCALE: 1" = 60'-0"

3050 Guernsey St  
Bellaire, OH 43906-1540

November 2015  
Traffic Counts



Lat: 40.01422 Long: -80.74397 Zoom: 0.85 m

Logos are for identification purposes only and may be trademarks of their respective companies.

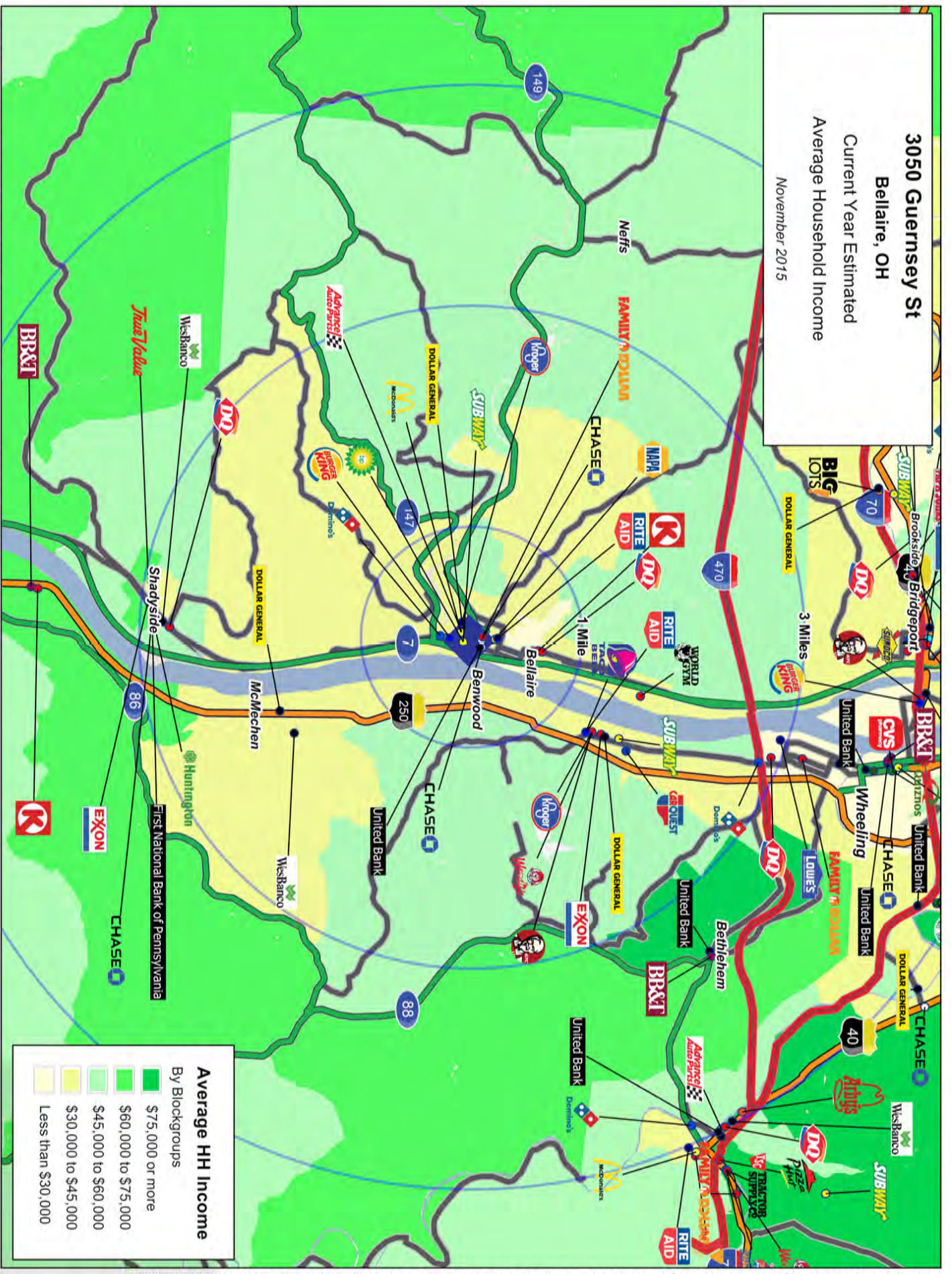
©2015, SITES USA Inc., Chandler, AZ (480) 491-1112. All Rights Reserved.

Google

Imagery ©2015, DigitalGlobe, USDA Farm Service Agency

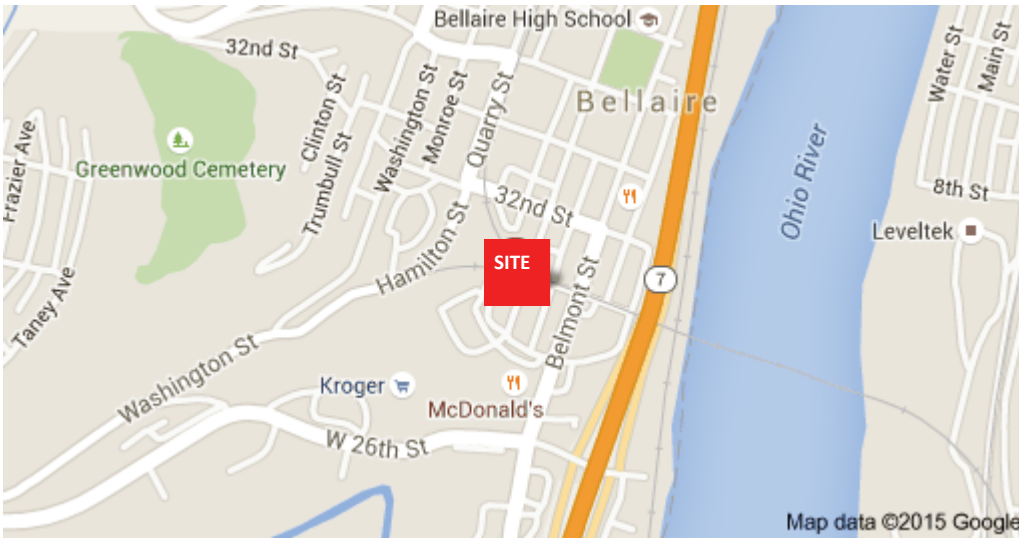
This map was produced using data from private and government sources deemed to be reliable. The information herein is provided without representation or warranty

**3050 Guernsey St**  
**Bellaire, OH**  
 Current Year Estimated  
 Average Household Income  
 November 2015



This map was produced using data from private and government sources deemed to be reliable. The information herein is provided without representation or warranty.

# 3050 Guernsey Street Bellaire, OH 43906



The site is located on Guernsey Street, approximately 5.3 miles southeast of Wheeling, WV and 3/10 of a mile off the Ohio River.

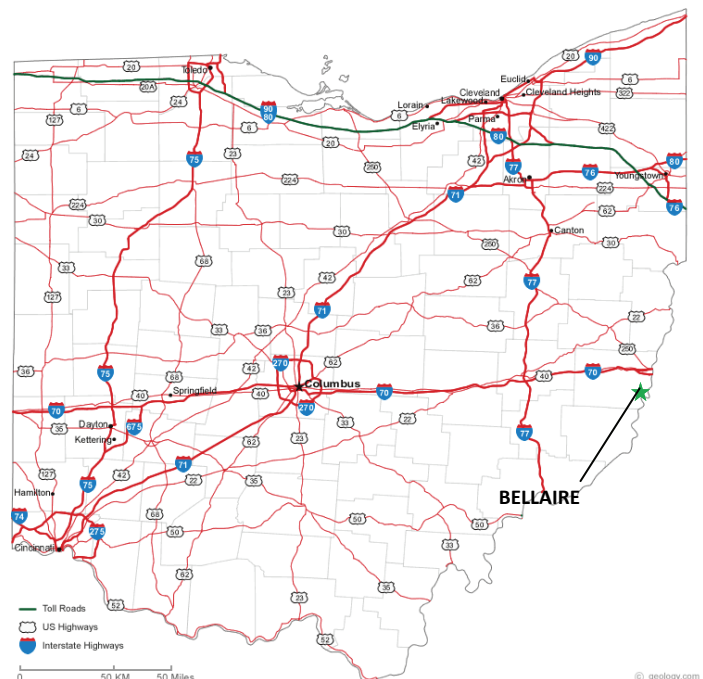
It is roughly 1.68 total square miles.

Bellaire is rich in history due to its close proximity to the Ohio River.

George Washington explored the area and surveyed the lands prior to the Revolutionary War.

It also had strategic importance during the Civil War, as it is located on the border of the State of Ohio (pro-Union) and the State of West Virginia (voted to secede from the Union).

Railroads on both sides added to the strategic significance. Camp Jefferson was thus established in Bellaire as a military training camp and was often a departure point for Union soldiers using the Baltimore & Ohio Railroad to move to the southeast.



# COCCA DEVELOPMENT, LTD

**3050 Guernsey Street    Bellaire, OH 43906**

## **AT A GLANCE**

- ◆ Bellaire is a village in Belmont County, Ohio, along the Ohio River, and is part of the Wheeling, West Virginia Metropolitan Statistical Area
- ◆ The Bellaire toll bridge, now abandoned and closed, was filmed in the 1991 motion picture, *The Silence of the Lambs*, while the curved viaduct and bridge over the Ohio River (the B&O Railroad Viaduct) were featured in the 2010 film *Unstoppable*, and is a registered historic structure
- ◆ Bellaire earned the title of “Glass City” for the period of 1870 to 1885, since it boasted modern transportation, an energy source, and a skilled workforce; glass making facilities included the Belmont Glass Works and the Imperial Glass Company
- ◆ Some notable Bellaire residents include Nate Davis, former NFL quarterback; Andy Dorris, former NFL defensive lineman; Joey Galloway, former NFL wide receiver and ESPN analyst; and actor Ted Levine

# GRAPHIC PROFILE

2000-2010 Census, 2014 Estimates with 2019 Projections

Calculated using Proportional Block Groups

Lat/Lon: 40.0129/-80.7451

RGRAP3

## 3050 Guernsey St

### Bellaire, OH

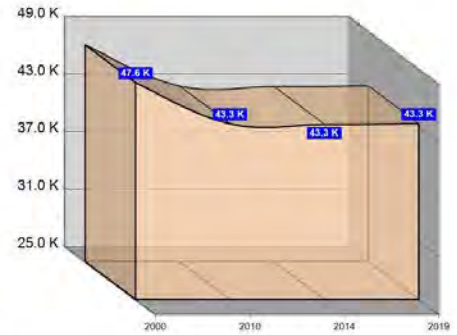
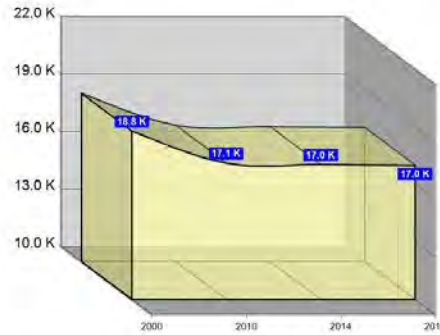
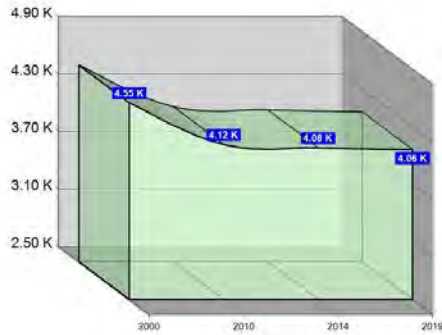
1 Mile

3 Miles

5 Miles

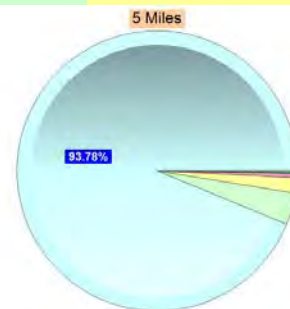
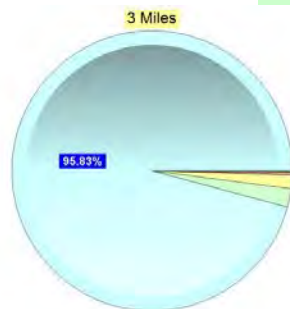
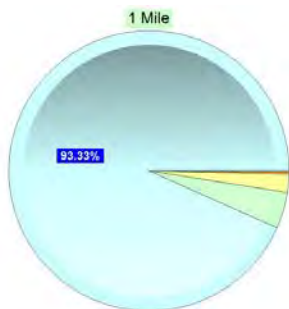
#### Population

Estimated Population (2014)	4,083	17,035	43,270
Projected Population (2019)	4,063	16,992	43,331
Census Population (2010)	4,117	17,116	43,319
Census Population (2000)	4,552	18,782	47,633
Projected Annual Growth (2014-2019)	-20 -0.1%	-43 -0.1%	60 -
Historical Annual Growth (2010-2014)	-34 -2.6%	-80 -2.4%	-49 -2.5%
Historical Annual Growth (2000-2010)	-435 -1.0%	-1,666 -0.9%	-4,314 -0.9%
Estimated Population Density (2014)	1,301 <i>psm</i>	603 <i>psm</i>	551 <i>psm</i>
Trade Area Size	3.1 <i>sq mi</i>	28.3 <i>sq mi</i>	78.5 <i>sq mi</i>



#### Race and Ethnicity (2014)

Not Hispanic or Latino Population	4,038 98.9%	16,905 99.2%	42,920 99.2%
White	3,774 93.5%	16,227 96.0%	40,336 94.0%
Black or African American	171 4.2%	360 2.1%	1,556 3.6%
American Indian or Alaska Native	9 0.2%	20 0.1%	59 0.1%
Asian	7 0.2%	41 0.2%	198 0.5%
Hawaiian or Pacific Islander	- -	2 -	5 -
Other Race	- -	13 0.1%	42 0.1%
Two or More Races	77 1.9%	243 1.4%	724 1.7%
Hispanic or Latino Population	45 1.1%	130 0.8%	350 0.8%
White	37 80.7%	99 75.6%	240 68.6%
Black or African American	- 0.6%	3 2.5%	23 6.7%
American Indian or Alaska Native	- -	4 2.9%	7 1.9%
Asian	- 0.7%	2 1.6%	6 1.7%
Hispanic Hawaiian or Pacific Islander	- -	- -	3 0.9%
Other Race	- -	4 3.1%	27 7.6%
Two or More Races	8 18.0%	19 14.3%	44 12.7%



White Black or African American American Indian or Alaska Native Asian Hawaiian or Pacific Islander Other Race 2+ Races

This report was produced using data from private and government sources deemed to be reliable. The information herein is provided without representation or warranty.

# GRAPHIC PROFILE

2000-2010 Census, 2014 Estimates with 2019 Projections

Calculated using Proportional Block Groups

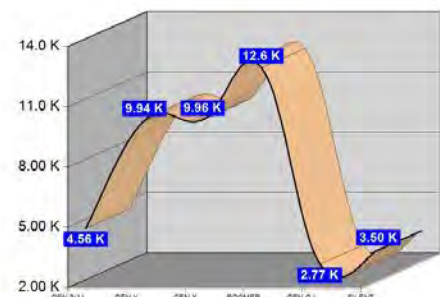
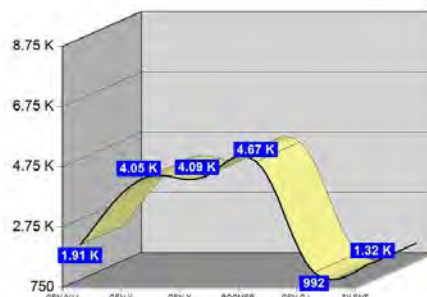
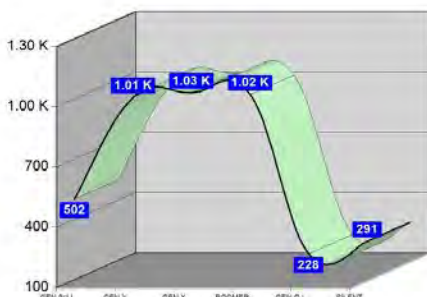
Lat/Lon: 40.0129/-80.7451

RGRAP3

## 3050 Guernsey St Bellaire, OH

	1 Mile	3 Miles	5 Miles
<b>Age Distribution (2014)</b>			
Age Under 5 Years	250 6.1%	977 5.7%	2,323 5.4%
Age 5 to 9 Years	252 6.2%	936 5.5%	2,234 5.2%
Age 10 to 14 Years	251 6.1%	985 5.8%	2,276 5.3%
Age 15 to 19 Years	265 6.5%	1,007 5.9%	2,574 5.9%
Age 20 to 24 Years	276 6.8%	1,047 6.1%	2,606 6.0%
Age 25 to 29 Years	240 5.9%	1,051 6.2%	2,503 5.8%
Age 30 to 34 Years	246 6.0%	917 5.4%	2,258 5.2%
Age 35 to 39 Years	257 6.3%	1,023 6.0%	2,395 5.5%
Age 40 to 44 Years	252 6.2%	1,007 5.9%	2,490 5.8%
Age 45 to 49 Years	254 6.2%	1,099 6.4%	2,794 6.5%
Age 50 to 54 Years	283 6.9%	1,238 7.3%	3,247 7.5%
Age 55 to 59 Years	286 7.0%	1,344 7.9%	3,583 8.3%
Age 60 to 64 Years	253 6.2%	1,212 7.1%	3,277 7.6%
Age 65 to 69 Years	201 4.9%	880 5.2%	2,448 5.7%
Age 70 to 74 Years	159 3.9%	714 4.2%	1,943 4.5%
Age 75 to 79 Years	132 3.2%	607 3.6%	1,555 3.6%
Age 80 to 84 Years	109 2.7%	475 2.8%	1,301 3.0%
Age 85 Years or Over	119 2.9%	516 3.0%	1,464 3.4%
Median Age	39.3	41.9	43.7

	1 Mile	3 Miles	5 Miles
<b>Generation (2014)</b>			
Generation 9/11 Millennials (Age Under 10 Years)	502 12.3%	1,913 11.2%	4,557 10.5%
Gen Y to Echo Boomers (Age 10 to 29 Years)	1,031 25.2%	4,091 24.0%	9,959 23.0%
Gen Xers (Age 30 to 49 Years)	1,009 24.7%	4,046 23.8%	9,937 23.0%
Baby Boomers (Age 50 to 69 Years)	1,022 25.0%	4,674 27.4%	12,555 29.0%
Silent Generation (Age 70 to 79 Years)	291 7.1%	1,320 7.7%	3,497 8.1%
G.I. Generation (Age 80 Years or Over)	228 5.6%	992 5.8%	2,765 6.4%



This report was produced using data from private and government sources deemed to be reliable. The information herein is provided without representation or warranty.



# GRAPHIC PROFILE

2000-2010 Census, 2014 Estimates with 2019 Projections

Calculated using Proportional Block Groups

Lat/Lon: 40.0129/-80.7451

RGRAP3

## 3050 Guernsey St

### Bellaire, OH

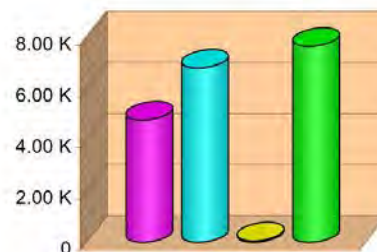
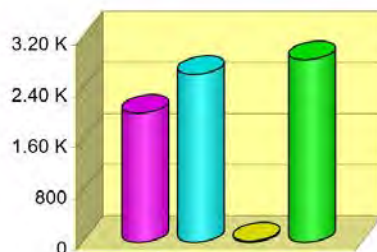
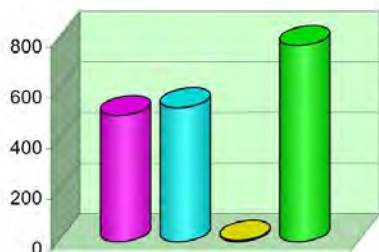
1 Mile

3 Miles

5 Miles

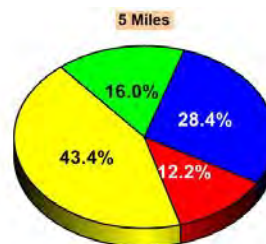
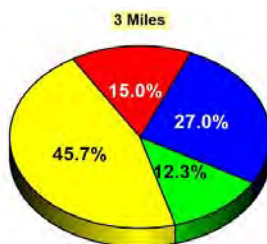
#### Household Type (2014)

	1 Mile	3 Miles	5 Miles
Total Households	1,812	7,520	19,311
Family Households	1,030 29.3%	4,644 34.9%	11,595 35.3%
Family Households with Children	500 48.5%	2,019 43.5%	4,782 41.2%
Family Households No Children	530 51.5%	2,625 56.5%	6,813 58.8%
Non-Family Households	782 29.3%	2,875 34.9%	7,716 35.3%
Non-Family Households with Children	5 0.7%	20 0.7%	54 0.7%
Non-Family Households No Children	777 99.3%	2,856 99.3%	7,662 99.3%



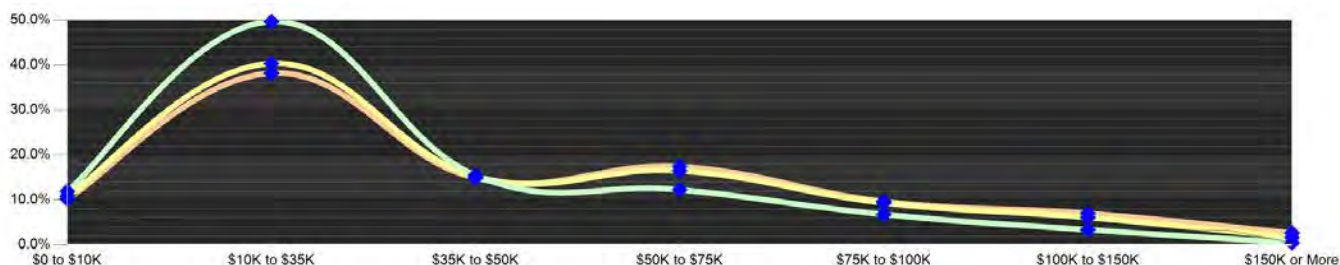
#### Education Attainment (2014)

	1 Mile	3 Miles	5 Miles
Elementary or Some High School	566 20.4%	1,802 15.0%	3,736 12.2%
High School Graduate	1,366 49.2%	5,492 45.7%	13,297 43.4%
Some College or Associate Degree	650 23.4%	3,237 27.0%	8,698 28.4%
Bachelor or Graduate Degree	193 7.0%	1,477 12.3%	4,908 16.0%



#### Household Income (2014)

	1 Mile	3 Miles	5 Miles
Estimated Average Household Income	\$31,835	\$39,237	\$43,363
Estimated Median Household Income	\$28,535	\$32,775	\$35,443
HH Income Under \$10,000	216 11.9%	815 10.8%	1,964 10.2%
HH Income \$10,000 to \$34,999	901 49.7%	3,038 40.4%	7,383 38.2%
HH Income \$35,000 to \$49,999	281 15.5%	1,144 15.2%	2,875 14.9%
HH Income \$50,000 to \$74,999	222 12.3%	1,240 16.5%	3,363 17.4%
HH Income \$75,000 to \$99,999	61 3.4%	458 6.1%	1,352 7.0%
HH Income \$100,000 to \$149,999	61 3.4%	458 6.1%	1,352 7.0%
HH Income \$150,000 or More	9 0.5%	123 1.6%	508 2.6%



This report was produced using data from private and government sources deemed to be reliable. The information herein is provided without representation or warranty.

# EXPANDED PROFILE

2000-2010 Census, 2014 Estimates with 2019 Projections

Calculated using Proportional Block Groups

Lat/Lon: 40.0129/-80.7451

RF5

## 3050 Guernsey St

### Bellaire, OH

#### Population

	1 Mile	3 Miles	5 Miles
Estimated Population (2014)	4,083	17,035	43,270
Projected Population (2019)	4,063	16,992	43,331
Census Population (2010)	4,117	17,116	43,319
Census Population (2000)	4,552	18,782	47,633
Projected Annual Growth (2014 to 2019)	-20 -0.1%	-43 -0.1%	60 -
Historical Annual Growth (2010 to 2014)	-34 -0.2%	-80 -0.1%	-49 -
Historical Annual Growth (2000 to 2010)	-435 -1.0%	-1,666 -0.9%	-4,314 -0.9%
Estimated Population Density (2014)	1,301 <i>psm</i>	603 <i>psm</i>	551 <i>psm</i>
Trade Area Size	3.14 <i>sq mi</i>	28.26 <i>sq mi</i>	78.49 <i>sq mi</i>

#### Households

Estimated Households (2014)	1,812	7,520	19,311
Projected Households (2019)	1,841	7,646	19,639
Census Households (2010)	1,792	7,420	19,018
Census Households (2000)	1,983	8,069	20,488
Estimated Households with Children (2014)	505 27.9%	2,038 27.1%	4,836 25.0%
Estimated Average Household Size (2014)	2.24	2.25	2.19

#### Average Household Income

Estimated Average Household Income (2014)	\$34,962	\$43,346	\$47,051
Projected Average Household Income (2019)	\$37,821	\$46,809	\$51,001
Estimated Average Family Income (2014)	\$40,613	\$53,240	\$59,248

#### Median Household Income

Estimated Median Household Income (2014)	\$29,253	\$35,363	\$38,483
Projected Median Household Income (2019)	\$31,778	\$38,361	\$41,672
Estimated Median Family Income (2014)	\$37,665	\$46,860	\$51,169

#### Per Capita Income

Estimated Per Capita Income (2014)	\$15,571	\$19,169	\$21,160
Projected Per Capita Income (2019)	\$17,202	\$21,104	\$23,292
Estimated Per Capita income 5 Year Growth	\$1,631 10.5%	\$1,934 10.1%	\$2,132 10.1%
Estimated Average Household Net Worth (2014)	\$222,690	\$258,959	\$283,902

#### Daytime Demos (2014)

Total Businesses	249	710	2,550
Total Employees	1,848	6,612	28,041
Company Headquarter Businesses	1 0.6%	3 0.4%	13 0.5%
Company Headquarter Employees	35 1.9%	339 5.1%	1,110 4.0%
Employee Population per Business	7.4	9.3	11.0
Residential Population per Business	16.4	24.0	17.0

This report was produced using data from private and government sources deemed to be reliable. The information herein is provided without representation or warranty.

# EXPANDED PROFILE

2000-2010 Census, 2014 Estimates with 2019 Projections

Calculated using Proportional Block Groups

Lat/Lon: 40.0129/-80.7451

RF5

3050 Guernsey St Bellaire, OH	1 Mile		3 Miles		5 Miles	
<b>Race &amp; Ethnicity</b>						
White (2014)	3,811	93.3%	16,325	95.8%	40,577	93.8%
Black or African American (2014)	171	4.2%	363	2.1%	1,579	3.7%
American Indian or Alaska Native (2014)	9	0.2%	23	0.1%	65	0.2%
Asian (2014)	7	0.2%	43	0.3%	204	0.5%
Hawaiian or Pacific Islander (2014)	-	-	2	-	8	-
Other Race (2014)	-	-	17	0.1%	68	0.2%
Two or More Races (2014)	86	2.1%	261	1.5%	769	1.8%
Not Hispanic or Latino Population (2014)	4,038	98.9%	16,905	99.2%	42,920	99.2%
Hispanic or Latino Population (2014)	45	1.1%	130	0.8%	350	0.8%
Not Hispanic or Latino Population (2019)	4,010	98.7%	16,838	99.1%	42,909	99.0%
Hispanic or Latino Population (2019)	53	1.3%	154	0.9%	422	1.0%
Not Hispanic or Latino Population (2010)	4,082	99.1%	17,011	99.4%	43,034	99.3%
Hispanic or Latino Population (2010)	35	0.9%	105	0.6%	285	0.7%
Not Hispanic or Latino Population (2000)	4,541	99.8%	18,728	99.7%	47,447	99.6%
Hispanic or Latino Population (2000)	11	0.2%	54	0.3%	186	0.4%
Projected Hispanic Annual Growth (2014 to 2019)	8	3.5%	24	3.7%	72	4.1%
Historic Hispanic Annual Growth (2000 to 2014)	35	22.8%	76	10.1%	164	6.3%
<b>Age Distribution (2014)</b>						
Age Under 5	250	6.1%	977	5.7%	2,323	5.4%
Age 5 to 9 Years	252	6.2%	936	5.5%	2,234	5.2%
Age 10 to 14 Years	251	6.1%	985	5.8%	2,276	5.3%
Age 15 to 19 Years	265	6.5%	1,007	5.9%	2,574	5.9%
Age 20 to 24 Years	276	6.8%	1,047	6.1%	2,606	6.0%
Age 25 to 29 Years	240	5.9%	1,051	6.2%	2,503	5.8%
Age 30 to 34 Years	246	6.0%	917	5.4%	2,258	5.2%
Age 35 to 39 Years	257	6.3%	1,023	6.0%	2,395	5.5%
Age 40 to 44 Years	252	6.2%	1,007	5.9%	2,490	5.8%
Age 45 to 49 Years	254	6.2%	1,099	6.4%	2,794	6.5%
Age 50 to 54 Years	283	6.9%	1,238	7.3%	3,247	7.5%
Age 55 to 59 Years	286	7.0%	1,344	7.9%	3,583	8.3%
Age 60 to 64 Years	253	6.2%	1,212	7.1%	3,277	7.6%
Age 65 to 74 Years	360	8.8%	1,594	9.4%	4,391	10.1%
Age 75 to 84 Years	242	5.9%	1,082	6.4%	2,856	6.6%
Age 85 Years or Over	119	2.9%	516	3.0%	1,464	3.4%
Median Age	39.3		41.9		43.7	
<b>Gender Age Distribution (2014)</b>						
Female Population	2,136	52.3%	8,834	51.9%	22,483	52.0%
Age 0 to 19 Years	500	23.4%	1,856	21.0%	4,593	20.4%
Age 20 to 64 Years	1,199	56.1%	5,116	57.9%	12,825	57.0%
Age 65 Years or Over	438	20.5%	1,862	21.1%	5,065	22.5%
Female Median Age	41.4		44.0		45.5	
Male Population	1,947	47.7%	8,201	48.1%	20,787	48.0%
Age 0 to 19 Years	517	26.6%	2,050	25.0%	4,814	23.2%
Age 20 to 64 Years	1,147	58.9%	4,822	58.8%	12,328	59.3%
Age 65 Years or Over	283	14.5%	1,329	16.2%	3,646	17.5%
Male Median Age	37.5		39.8		41.7	

This report was produced using data from private and government sources deemed to be reliable. The information herein is provided without representation or warranty.

# EXPANDED PROFILE

2000-2010 Census, 2014 Estimates with 2019 Projections

Calculated using Proportional Block Groups

Lat/Lon: 40.0129/-80.7451

RF5

## 3050 Guernsey St

### Bellaire, OH

#### Household Income Distribution (2014)

	1 Mile		3 Miles		5 Miles	
HH Income \$200,000 or More	1	-	31	0.4%	185	1.0%
HH Income \$150,000 to \$199,999	8	0.4%	92	1.2%	324	1.7%
HH Income \$100,000 to \$149,999	61	3.4%	458	6.1%	1,352	7.0%
HH Income \$75,000 to \$99,999	123	6.8%	702	9.3%	1,867	9.7%
HH Income \$50,000 to \$74,999	222	12.3%	1,240	16.5%	3,363	17.4%
HH Income \$35,000 to \$49,999	281	15.5%	1,144	15.2%	2,875	14.9%
HH Income \$25,000 to \$34,999	329	18.1%	1,224	16.3%	2,733	14.2%
HH Income \$15,000 to \$24,999	409	22.6%	1,187	15.8%	3,052	15.8%
HH Income Under \$15,000	379	20.9%	1,442	19.2%	3,563	18.4%
HH Income \$35,000 or More	695	38.4%	3,667	48.8%	9,964	51.6%
HH Income \$75,000 or More	192	10.6%	1,283	17.1%	3,726	19.3%

#### Housing (2014)

	1 Mile		3 Miles		5 Miles	
Total Housing Units	2,100		8,468		21,461	
Housing Units Occupied	1,812	86.3%	7,520	88.8%	19,311	90.0%
Housing Units Owner-Occupied	991	54.7%	5,027	66.8%	13,046	67.6%
Housing Units, Renter-Occupied	821	45.3%	2,493	33.2%	6,265	32.4%
Housing Units, Vacant	288	13.7%	948	11.2%	2,151	10.0%

#### Marital Status (2014)

	1 Mile		3 Miles		5 Miles	
Never Married	981	29.5%	4,086	28.9%	10,360	28.4%
Currently Married	1,314	39.4%	6,509	46.0%	16,750	46.0%
Separated	109	3.3%	372	2.6%	1,089	3.0%
Widowed	311	9.3%	1,284	9.1%	3,547	9.7%
Divorced	616	18.5%	1,887	13.3%	4,691	12.9%

#### Household Type (2014)

	1 Mile		3 Miles		5 Miles	
Population Family	3,053	74.8%	13,297	78.1%	32,551	75.2%
Population Non-Family	1,007	24.7%	3,656	21.5%	9,715	22.5%
Population Group Quarters	23	0.6%	83	0.5%	1,004	2.3%
Family Households	1,030	56.8%	4,644	61.8%	11,595	60.0%
Non-Family Households	782	43.2%	2,875	38.2%	7,716	40.0%
Married Couple with Children	240	18.3%	1,111	17.1%	2,757	16.5%
Average Family Household Size	3.0		2.9		2.8	

#### Household Size (2014)

	1 Mile		3 Miles		5 Miles	
1 Person Households	672	37.1%	2,487	33.1%	6,704	34.7%
2 Person Households	534	29.5%	2,495	33.2%	6,534	33.8%
3 Person Households	266	14.7%	1,176	15.6%	2,892	15.0%
4 Person Households	192	10.6%	828	11.0%	1,967	10.2%
5 Person Households	94	5.2%	367	4.9%	853	4.4%
6 or More Person Households	54	3.0%	167	2.2%	359	1.9%

#### Household Vehicles (2014)

	1 Mile		3 Miles		5 Miles	
Households with 0 Vehicles Available	337	18.6%	907	12.1%	2,516	13.0%
Households with 1 Vehicles Available	733	40.5%	2,985	39.7%	7,583	39.3%
Households with 2 or More Vehicles Available	741	40.9%	3,628	48.2%	9,212	47.7%
Total Vehicles Available	2,519		11,656		29,787	
Average Vehicles Per Household	1.4		1.6		1.5	

This report was produced using data from private and government sources deemed to be reliable. The information herein is provided without representation or warranty.

# EXPANDED PROFILE

2000-2010 Census, 2014 Estimates with 2019 Projections

Calculated using Proportional Block Groups

Lat/Lon: 40.0129/-80.7451

RF5

## 3050 Guernsey St

### Bellaire, OH

#### Labor Force (2014)

	1 Mile	3 Miles	5 Miles
Estimated Labor Population Age 16 Years or Over	3,258	13,853	34,976
Estimated Civilian Employed	1,454 44.6%	6,803 49.1%	17,785 50.9%
Estimated Civilian Unemployed	137 4.2%	670 4.8%	1,613 4.6%
Estimated in Armed Forces	- -	1 -	40 0.1%
Estimated Not in Labor Force	1,667 51.1%	6,379 46.0%	15,537 44.4%
Unemployment Rate	4.2%	4.8%	4.6%

#### Occupation (2010)

	1 Mile	3 Miles	5 Miles
Occupation: Population Age 16 Years or Over	1,597	7,121	18,476
Management, Business, Financial Operations	68 4.3%	461 6.5%	1,530 8.3%
Professional, Related	307 19.2%	1,357 19.1%	3,676 19.9%
Service	415 26.0%	1,719 24.1%	4,447 24.1%
Sales, Office	502 31.4%	1,981 27.8%	4,861 26.3%
Farming, Fishing, Forestry	1 0.1%	2 -	27 0.1%
Construct, Extraction, Maintenance	139 8.7%	718 10.1%	1,751 9.5%
Production, Transport Material Moving	165 10.3%	882 12.4%	2,182 11.8%
White Collar Workers	877 54.9%	3,799 53.3%	10,068 54.5%
Blue Collar Workers	720 45.1%	3,322 46.7%	8,408 45.5%

#### Consumer Expenditure (2014)

	1 Mile	3 Miles	5 Miles
Total Household Expenditure	\$63.2 M	\$299 M	\$809 M
Total Non-Retail Expenditure	\$35.9 M 56.7%	\$171 M 57.0%	\$462 M 57.1%
Total Retail Expenditure	\$27.3 M 43.3%	\$129 M 43.0%	\$347 M 42.9%
Apparel	\$3.00 M 4.8%	\$14.2 M 4.8%	\$38.5 M 4.8%
Contributions	\$2.07 M 3.3%	\$10.2 M 3.4%	\$28.1 M 3.5%
Education	\$1.33 M 2.1%	\$6.46 M 2.2%	\$17.9 M 2.2%
Entertainment	\$3.46 M 5.5%	\$16.5 M 5.5%	\$44.6 M 5.5%
Food and Beverages	\$10.1 M 16.0%	\$47.3 M 15.8%	\$127 M 15.7%
Furnishings and Equipment	\$2.56 M 4.1%	\$12.5 M 4.2%	\$34.1 M 4.2%
Gifts	\$1.52 M 2.4%	\$7.41 M 2.5%	\$20.4 M 2.5%
Health Care	\$4.25 M 6.7%	\$19.6 M 6.5%	\$52.4 M 6.5%
Household Operations	\$2.04 M 3.2%	\$9.95 M 3.3%	\$27.3 M 3.4%
Miscellaneous Expenses	\$1.11 M 1.8%	\$5.18 M 1.7%	\$13.9 M 1.7%
Personal Care	\$928 K 1.5%	\$4.38 M 1.5%	\$11.8 M 1.5%
Personal Insurance	\$579 K 0.9%	\$2.83 M 0.9%	\$7.78 M 1.0%
Reading	\$207 K 0.3%	\$983 K 0.3%	\$2.66 M 0.3%
Shelter	\$12.1 M 19.2%	\$57.5 M 19.2%	\$156 M 19.2%
Tobacco	\$497 K 0.8%	\$2.23 M 0.7%	\$5.85 M 0.7%
Transportation	\$12.6 M 19.9%	\$60.1 M 20.1%	\$162 M 20.0%
Utilities	\$4.81 M 7.6%	\$22.1 M 7.4%	\$59.1 M 7.3%

#### Educational Attainment (2014)

	1 Mile	3 Miles	5 Miles
Adult Population Age 25 Years or Over	2,775	12,008	30,638
Elementary (Grade Level 0 to 8)	147 5.3%	453 3.8%	941 3.1%
Some High School (Grade Level 9 to 11)	419 15.1%	1,349 11.2%	2,795 9.1%
High School Graduate	1,366 49.2%	5,492 45.7%	13,297 43.4%
Some College	419 15.1%	2,341 19.5%	6,487 21.2%
Associate Degree Only	231 8.3%	896 7.5%	2,210 7.2%
Bachelor Degree Only	140 5.0%	1,074 8.9%	3,259 10.6%
Graduate Degree	54 1.9%	403 3.4%	1,648 5.4%

This report was produced using data from private and government sources deemed to be reliable. The information herein is provided without representation or warranty.

# EXPANDED PROFILE

2000-2010 Census, 2014 Estimates with 2019 Projections

Calculated using Proportional Block Groups

Lat/Lon: 40.0129/-80.7451

RF5

## 3050 Guernsey St

### Bellaire, OH

#### Units In Structure (2010)

	1 Mile		3 Miles		5 Miles	
1 Detached Unit	1,150	64.2%	5,442	73.3%	13,587	71.4%
1 Attached Unit	77	4.3%	272	3.7%	576	3.0%
2 to 4 Units	340	19.0%	814	11.0%	2,034	10.7%
5 to 9 Units	84	4.7%	368	5.0%	703	3.7%
10 to 19 Units	10	0.5%	67	0.9%	241	1.3%
20 to 49 Units	46	2.6%	89	1.2%	203	1.1%
50 or More Units	68	3.8%	109	1.5%	780	4.1%
Mobile Home or Trailer	18	1.0%	259	3.5%	892	4.7%
Other Structure	-	-	-	-	2	-

#### Homes Built By Year (2010)

	1 Mile		3 Miles		5 Miles	
Homes Built 2005 or later	35	2.0%	144	1.9%	348	1.8%
Homes Built 2000 to 2004	33	1.9%	205	2.8%	601	3.2%
Homes Built 1990 to 1999	100	5.6%	481	6.5%	1,425	7.5%
Homes Built 1980 to 1989	120	6.7%	551	7.4%	1,551	8.2%
Homes Built 1970 to 1979	179	10.0%	908	12.2%	2,656	14.0%
Homes Built 1960 to 1969	197	11.0%	750	10.1%	2,194	11.5%
Homes Built 1950 to 1959	226	12.6%	1,075	14.5%	2,711	14.3%
Homes Built Before 1949	901	50.3%	3,307	44.6%	7,531	39.6%

#### Home Values (2010)

	1 Mile		3 Miles		5 Miles	
Home Values \$1,000,000 or More	-	-	1	-	10	0.1%
Home Values \$500,000 to \$999,999	2	0.2%	10	0.2%	52	0.4%
Home Values \$400,000 to \$499,999	2	0.2%	17	0.3%	50	0.4%
Home Values \$300,000 to \$399,999	4	0.4%	66	1.3%	209	1.6%
Home Values \$200,000 to \$299,999	19	2.0%	218	4.4%	987	7.7%
Home Values \$150,000 to \$199,999	43	4.4%	432	8.7%	1,302	10.1%
Home Values \$100,000 to \$149,999	102	10.4%	600	12.1%	2,135	16.6%
Home Values \$70,000 to \$99,999	179	18.3%	1,192	24.1%	3,032	23.6%
Home Values \$50,000 to \$69,999	205	21.0%	1,026	20.7%	2,099	16.3%
Home Values \$25,000 to \$49,999	255	26.2%	932	18.8%	1,925	15.0%
Home Values Under \$25,000	165	16.9%	455	9.2%	1,039	8.1%
Owner-Occupied Median Home Value	\$56,903		\$72,725		\$85,452	
Renter-Occupied Median Rent	\$357		\$370		\$388	

#### Transportation To Work (2010)

	1 Mile		3 Miles		5 Miles	
Drive to Work Alone	1,239	80.2%	5,788	83.7%	14,898	82.6%
Drive to Work in Carpool	205	13.3%	617	8.9%	1,452	8.0%
Travel to Work by Public Transportation	20	1.3%	81	1.2%	219	1.2%
Drive to Work on Motorcycle	1	0.1%	4	0.1%	17	0.1%
Walk or Bicycle to Work	45	2.9%	241	3.5%	901	5.0%
Other Means	13	0.8%	62	0.9%	107	0.6%
Work at Home	23	1.5%	118	1.7%	447	2.5%

#### Travel Time (2010)

	1 Mile		3 Miles		5 Miles	
Travel to Work in 14 Minutes or Less	408	26.8%	2,194	32.3%	6,795	38.6%
Travel to Work in 15 to 29 Minutes	819	53.8%	3,206	47.2%	7,371	41.9%
Travel to Work in 30 to 59 Minutes	259	17.0%	1,051	15.5%	2,560	14.6%
Travel to Work in 60 Minutes or More	37	2.4%	344	5.1%	867	4.9%
Average Minutes Travel to Work	19.1		18.0		16.9	

This report was produced using data from private and government sources deemed to be reliable. The information herein is provided without representation or warranty.