

COCCA DEVELOPMENT

RETAIL SPACE FOR LEASE

5532 MAHONING AVENUE

AUSTINTOWN, OH 44515



- Join Kay's Jewelers and T-Mobile in new plaza to be constructed mid-2017; building will be 8,400 square feet total with 4,000 square feet remaining
- Front walls signs plus large tenant pylon sign; wide frontage on tenant space
- Large ample parking lot
- Easy ingress and egress to Mahoning Avenue

AVAILABLE SUITE AREA—\$27/square foot NNN:

Approximately 4,000 square feet*

*Can be split per space needs

NNN: Base rent plus prorata share of Real Estate Taxes, Insurance, and Common Area expenses, including but not limited to snow removal, lawn care, and parking lot maintenance. Tenant pays separately metered utilities for gas, electric, water, sewer, & trash removal.

CALL 330-729-1010 FOR MORE INFORMATION

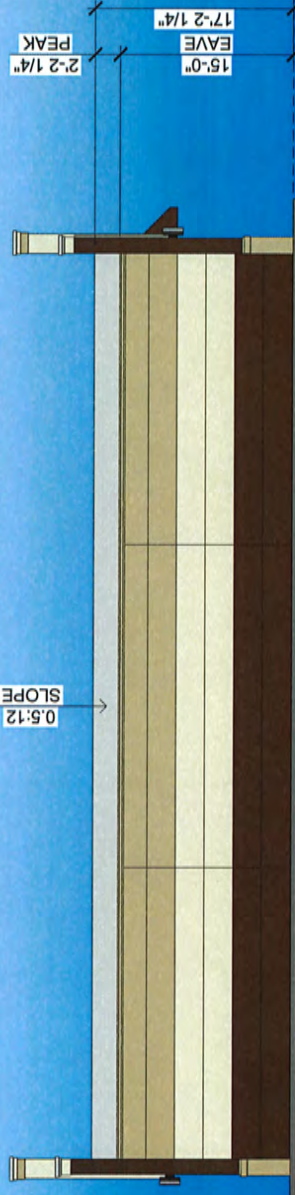
www.coccadevelopment.com



WEST ELEVATION

SOUTH ELEVATION

0.5:12
SLOPE



EAST ELEVATION



NORTH ELEVATION

DEVELOPED & MANAGED BY
Cocca Development, LTD
 100 DEBARTOLO PLACE, SUITE 400
 COLUMBUS, OH 43215
 PHONE: 614-293-0118
 FAX: 614-293-1008

RETAIL PLAZA
 5532 MAHONING AVENUE
 AUSTINTOWN, OH

10/10/16

5532 MAHONING AVENUE
YOUNGSTOWN, OHIO

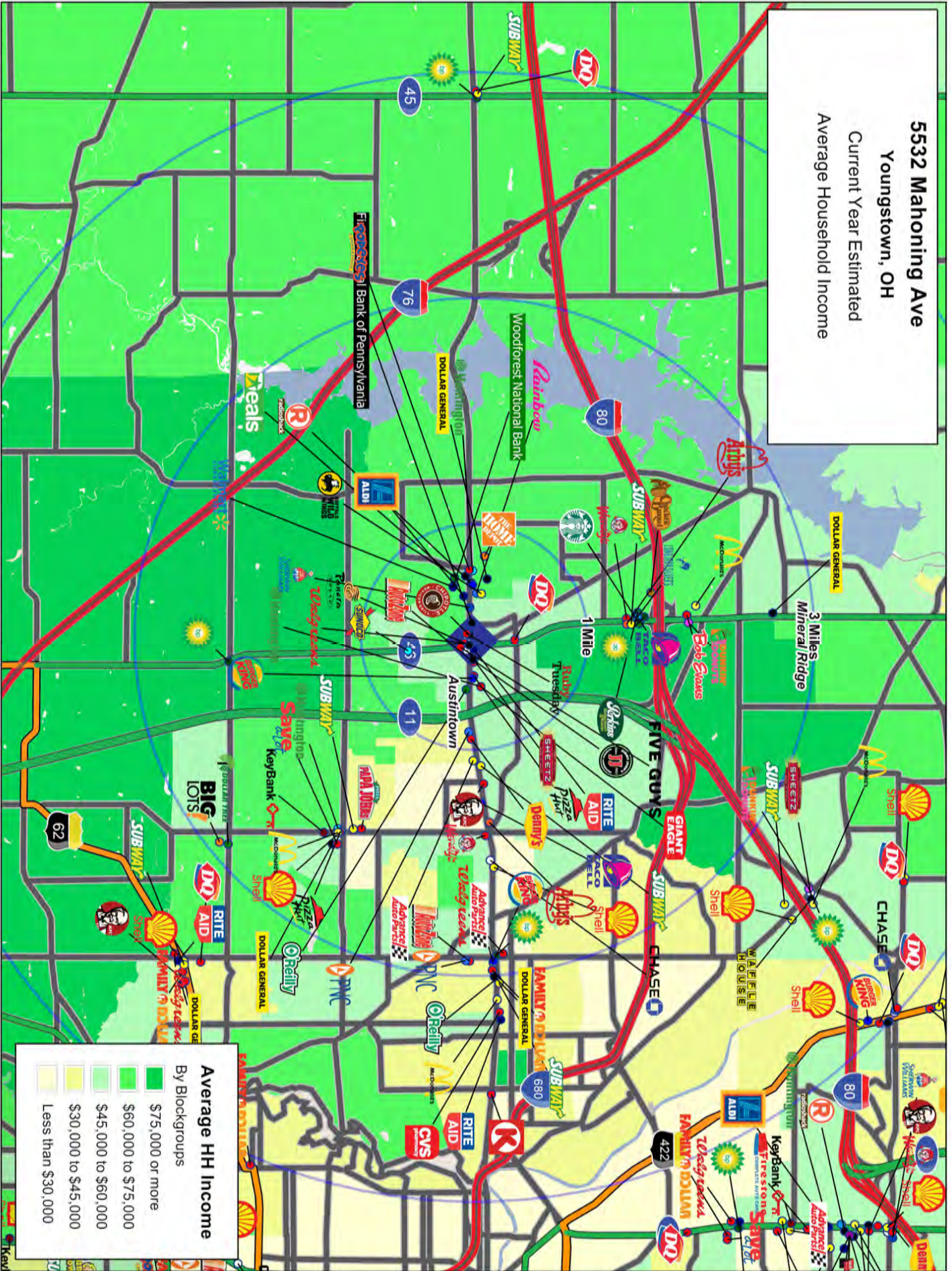


This map was produced using data from private and government sources deemed to be reliable. The information herein is provided without representation or warranty.

©2018 STES USA Inc. Chandler, AZ 4801 491-1112 All Rights Reserved.

Logos are for identification purposes only and may be trademarks of their respective companies.

5532 Mahoning Ave
 Youngstown, OH
 Current Year Estimated
 Average Household Income



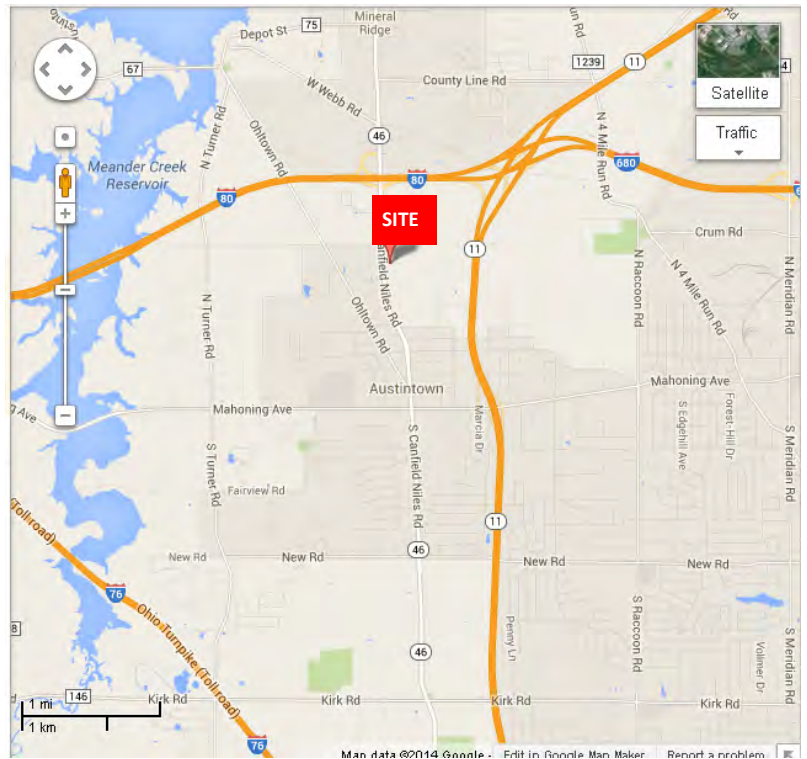
Average HH Income
 By Blockgroups

Dark Green	\$75,000 or more
Medium Green	\$60,000 to \$75,000
Light Green	\$45,000 to \$60,000
Yellow-Green	\$30,000 to \$45,000
Yellow	Less than \$30,000

This map was produced using data from private and government sources deemed to be reliable. The information herein is provided without representation or warranty.

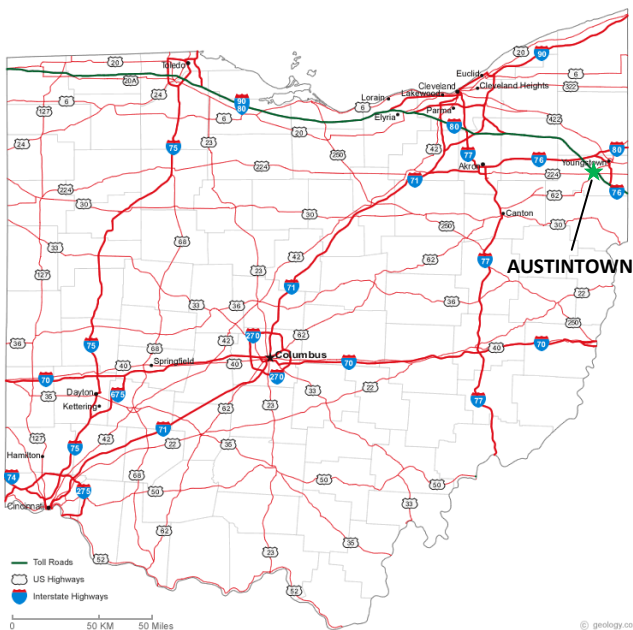
5532 Mahoning Avenue Austintown, OH 44515

The site is located on Mahoning Avenue near the corner of North Canfield Niles Road (Route 46), 3 mile south of I-80 and 5 miles from OH-11. Easily accessible and near main travel plaza off Interstate 80.



Ohio's State Route 11 is a north-south freeway which passes through with access from Exit 39. Interstate 680 passes east-to-west through the northern part of the area but provides no access. Interstate 80 passes to the north of the area and has access from Exit

223



The average daily traffic count on N Canfield Niles Rd. is approximately 17,000.

Located near the Hollywood Gaming Casino and Racetrack which opened Fall 2014.

COCCA DEVELOPMENT, LTD

5532 Mahoning Avenue Austintown, OH 44515

AT A GLANCE

- ◆ Austintown is located inside Austintown Township, founded in 1793 in a section that used to be known as the Connecticut Western Reserve, in Mahoning County, and is part of the Youngstown-Warren-Boardman OH-PA Metropolitan Statistical Area which contains approximately 250 acres of park land.
- ◆ Austintown was named for Warren resident and Western Reserve Judge, Calvin Austin
- Birthplace to Jeff Wilkins (former American Football placekicker lastly with the St. Louis Rams) and Mike McGlynn (current American Football player with the Kansas City Chiefs)
- Newly opened (October 2014), the Hollywood Racino is just off Interstate 80 at 655 N. Canfield-Niles Road and consists of 1,000 video lottery terminals as well as a thoroughbred race track.

GRAPHIC PROFILE

2000-2010 Census, 2014 Estimates with 2019 Projections

Calculated using Proportional Block Groups

Lat/Lon: 41.1002/-80.7654

RGRAP3

5532 Mahoning Ave

Youngstown, OH

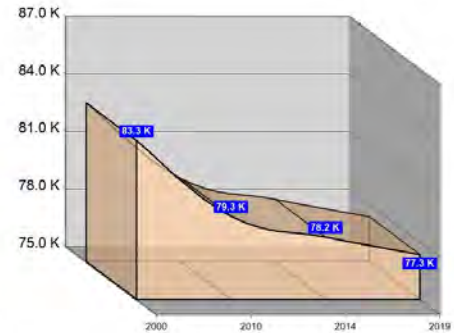
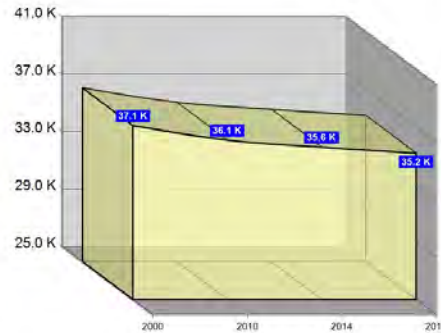
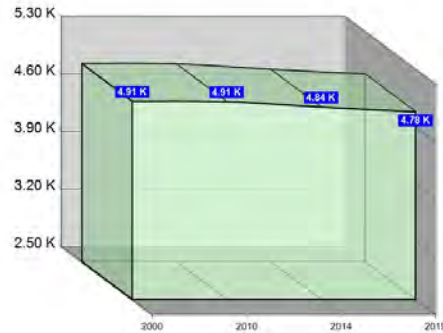
1 Mile

3 Miles

5 Miles

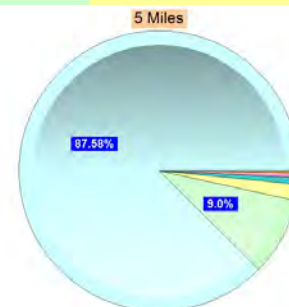
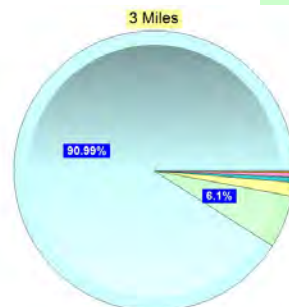
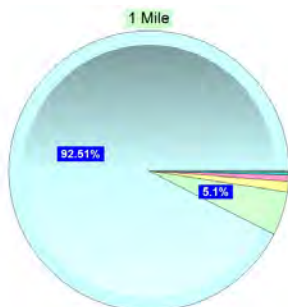
Population

Estimated Population (2014)	4,842	35,600	78,249
Projected Population (2019)	4,785	35,172	77,335
Census Population (2010)	4,907	36,086	79,332
Census Population (2000)	4,914	37,097	83,284
Projected Annual Growth (2014-2019)	-57 -0.2%	-428 -0.2%	-913 -0.2%
Historical Annual Growth (2010-2014)	-65 -	-486 -0.7%	-1,083 -1.2%
Historical Annual Growth (2000-2010)	-6 -	-1,011 -0.3%	-3,953 -0.5%
Estimated Population Density (2014)	1,543 <i>psm</i>	1,260 <i>psm</i>	997 <i>psm</i>
Trade Area Size	3.1 <i>sq mi</i>	28.3 <i>sq mi</i>	78.5 <i>sq mi</i>



Race and Ethnicity (2014)

Not Hispanic or Latino Population	4,714 97.4%	34,556 97.1%	75,468 96.4%
White	4,387 93.1%	31,743 91.9%	66,936 88.7%
Black or African American	237 5.0%	2,107 6.1%	6,786 9.0%
American Indian or Alaska Native	4 0.1%	47 0.1%	116 0.2%
Asian	34 0.7%	188 0.5%	448 0.6%
Hawaiian or Pacific Islander	- -	8 -	10 -
Other Race	3 0.1%	14 -	43 0.1%
Two or More Races	48 1.0%	449 1.3%	1,128 1.5%
Hispanic or Latino Population	128 2.6%	1,044 2.9%	2,781 3.6%
White	92 71.9%	651 62.3%	1,598 57.5%
Black or African American	7 5.6%	64 6.1%	241 8.7%
American Indian or Alaska Native	1 0.5%	13 1.2%	32 1.2%
Asian	1 1.1%	5 0.4%	7 0.3%
Hispanic Hawaiian or Pacific Islander	- 0.1%	1 0.1%	1 -
Other Race	16 12.3%	194 18.6%	555 20.0%
Two or More Races	11 8.4%	116 11.1%	346 12.5%



White Black or African American American Indian or Alaska Native Asian Hawaiian or Pacific Islander Other Race 2+ Races

This report was produced using data from private and government sources deemed to be reliable. The information herein is provided without representation or warranty.

GRAPHIC PROFILE

2000-2010 Census, 2014 Estimates with 2019 Projections

Calculated using Proportional Block Groups

Lat/Lon: 41.1002/-80.7654

RGRAP3

5532 Mahoning Ave

Youngstown, OH

1 Mile

3 Miles

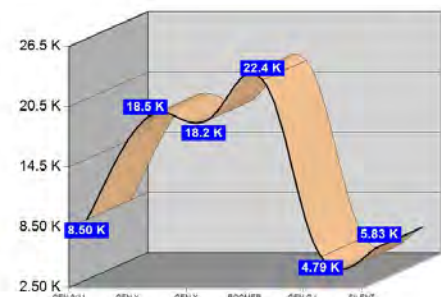
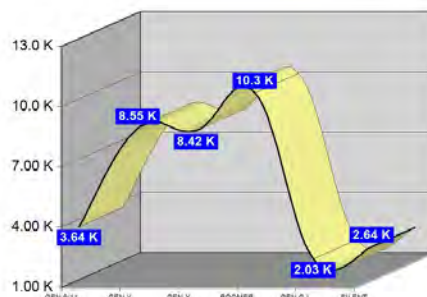
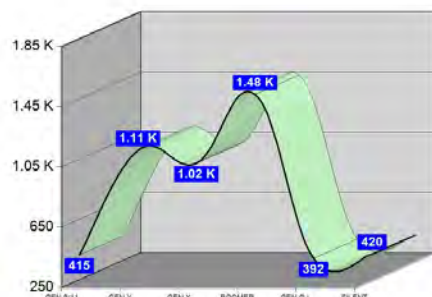
5 Miles

Age Distribution (2014)

	1 Mile	3 Miles	5 Miles
Age Under 5 Years	199 4.1%	1,743 4.9%	4,101 5.2%
Age 5 to 9 Years	216 4.5%	1,897 5.3%	4,396 5.6%
Age 10 to 14 Years	240 5.0%	2,043 5.7%	4,679 6.0%
Age 15 to 19 Years	248 5.1%	1,973 5.5%	4,487 5.7%
Age 20 to 24 Years	284 5.9%	2,304 6.5%	4,696 6.0%
Age 25 to 29 Years	253 5.2%	2,101 5.9%	4,358 5.6%
Age 30 to 34 Years	258 5.3%	2,049 5.8%	4,402 5.6%
Age 35 to 39 Years	247 5.1%	2,033 5.7%	4,355 5.6%
Age 40 to 44 Years	293 6.0%	2,252 6.3%	4,836 6.2%
Age 45 to 49 Years	312 6.4%	2,218 6.2%	4,932 6.3%
Age 50 to 54 Years	347 7.2%	2,545 7.1%	5,742 7.3%
Age 55 to 59 Years	393 8.1%	2,802 7.9%	6,301 8.1%
Age 60 to 64 Years	414 8.5%	2,757 7.7%	5,829 7.4%
Age 65 to 69 Years	328 6.8%	2,212 6.2%	4,521 5.8%
Age 70 to 74 Years	224 4.6%	1,524 4.3%	3,319 4.2%
Age 75 to 79 Years	196 4.1%	1,116 3.1%	2,508 3.2%
Age 80 to 84 Years	169 3.5%	878 2.5%	2,148 2.7%
Age 85 Years or Over	223 4.6%	1,154 3.2%	2,639 3.4%
Median Age	46.9	42.8	42.8

Generation (2014)

	1 Mile	3 Miles	5 Miles
Generation 9/11 Millennials (Age Under 10 Years)	415 8.6%	3,640 10.2%	8,497 10.9%
Gen Y to Echo Boomers (Age 10 to 29 Years)	1,025 21.2%	8,421 23.7%	18,220 23.3%
Gen Xers (Age 30 to 49 Years)	1,110 22.9%	8,551 24.0%	18,525 23.7%
Baby Boomers (Age 50 to 69 Years)	1,481 30.6%	10,316 29.0%	22,393 28.6%
Silent Generation (Age 70 to 79 Years)	420 8.7%	2,640 7.4%	5,827 7.4%
G.I. Generation (Age 80 Years or Over)	392 8.1%	2,032 5.7%	4,787 6.1%



This report was produced using data from private and government sources deemed to be reliable. The information herein is provided without representation or warranty.

GRAPHIC PROFILE

2000-2010 Census, 2014 Estimates with 2019 Projections

Calculated using Proportional Block Groups

Lat/Lon: 41.1002/-80.7654

RGRAP3

5532 Mahoning Ave

Youngstown, OH

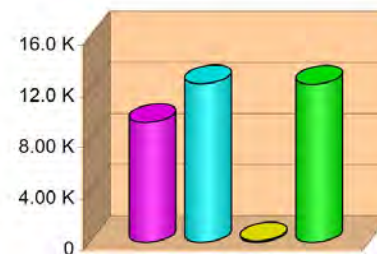
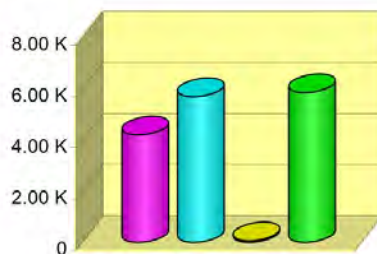
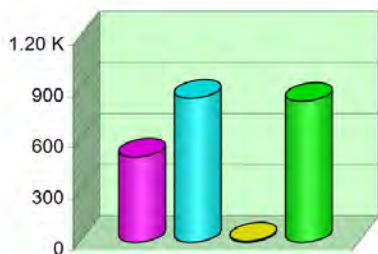
1 Mile

3 Miles

5 Miles

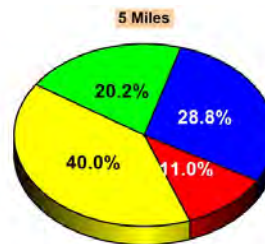
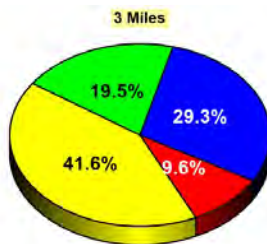
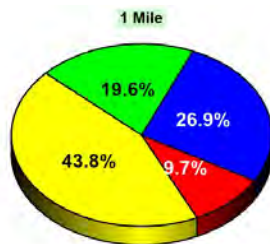
Household Type (2014)

	1 Mile	3 Miles	5 Miles
Total Households	2,180	15,814	34,251
Family Households	1,345 38.8%	9,898 36.0%	21,779 36.2%
Family Households with Children	500 37.2%	4,201 42.4%	9,376 43.1%
Family Households No Children	845 62.8%	5,697 57.6%	12,403 56.9%
Non-Family Households	835 38.8%	5,916 36.0%	12,472 36.2%
Non-Family Households with Children	7 0.9%	61 1.0%	112 0.9%
Non-Family Households No Children	828 99.1%	5,855 99.0%	12,360 99.1%



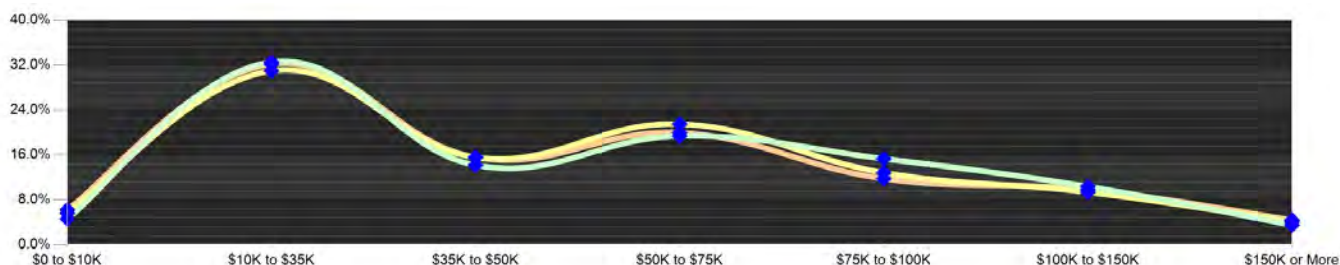
Education Attainment (2014)

	1 Mile	3 Miles	5 Miles
Elementary or Some High School	339 9.7%	2,402 9.6%	6,010 11.0%
High School Graduate	1,534 43.8%	10,395 41.6%	21,874 40.0%
Some College or Associate Degree	941 26.9%	7,309 29.3%	15,750 28.8%
Bachelor or Graduate Degree	685 19.6%	4,870 19.5%	11,027 20.2%



Household Income (2014)

	1 Mile	3 Miles	5 Miles
Estimated Average Household Income	\$57,957	\$52,685	\$53,780
Estimated Median Household Income	\$50,473	\$45,958	\$44,408
HH Income Under \$10,000	101 4.6%	891 5.6%	2,141 6.3%
HH Income \$10,000 to \$34,999	709 32.5%	4,901 31.0%	11,019 32.2%
HH Income \$35,000 to \$49,999	309 14.2%	2,464 15.6%	5,339 15.6%
HH Income \$50,000 to \$74,999	423 19.4%	3,401 21.5%	6,840 20.0%
HH Income \$75,000 to \$99,999	226 10.4%	1,485 9.4%	3,365 9.8%
HH Income \$100,000 to \$149,999	226 10.4%	1,485 9.4%	3,365 9.8%
HH Income \$150,000 or More	77 3.5%	638 4.0%	1,513 4.4%



This report was produced using data from private and government sources deemed to be reliable. The information herein is provided without representation or warranty.

EXPANDED PROFILE

2000-2010 Census, 2014 Estimates with 2019 Projections

Calculated using Proportional Block Groups

Lat/Lon: 41.1002/-80.7654

RF5

5532 Mahoning Ave Youngstown, OH	1 Mile	3 Miles	5 Miles
Population			
Estimated Population (2014)	4,842	35,600	78,249
Projected Population (2019)	4,785	35,172	77,335
Census Population (2010)	4,907	36,086	79,332
Census Population (2000)	4,914	37,097	83,284
Projected Annual Growth (2014 to 2019)	-57 -0.2%	-428 -0.2%	-913 -0.2%
Historical Annual Growth (2010 to 2014)	-65 -0.3%	-486 -0.3%	-1,083 -0.3%
Historical Annual Growth (2000 to 2010)	-6 -	-1,011 -0.3%	-3,953 -0.5%
Estimated Population Density (2014)	1,543 <i>psm</i>	1,260 <i>psm</i>	997 <i>psm</i>
Trade Area Size	3.14 <i>sq mi</i>	28.26 <i>sq mi</i>	78.49 <i>sq mi</i>
Households			
Estimated Households (2014)	2,180	15,814	34,251
Projected Households (2019)	2,216	16,068	34,795
Census Households (2010)	2,144	15,551	33,673
Census Households (2000)	1,942	15,221	33,913
Estimated Households with Children (2014)	507 23.3%	4,262 26.9%	9,488 27.7%
Estimated Average Household Size (2014)	2.15	2.21	2.25
Average Household Income			
Estimated Average Household Income (2014)	\$57,308	\$57,216	\$58,307
Projected Average Household Income (2019)	\$62,114	\$61,958	\$63,195
Estimated Average Family Income (2014)	\$67,271	\$67,114	\$69,646
Median Household Income			
Estimated Median Household Income (2014)	\$49,751	\$49,426	\$48,459
Projected Median Household Income (2019)	\$54,066	\$53,216	\$52,351
Estimated Median Family Income (2014)	\$65,163	\$61,415	\$59,841
Per Capita Income			
Estimated Per Capita Income (2014)	\$26,026	\$25,554	\$25,641
Projected Per Capita Income (2019)	\$29,022	\$28,461	\$28,567
Estimated Per Capita income 5 Year Growth	\$2,996 11.5%	\$2,907 11.4%	\$2,926 11.4%
Estimated Average Household Net Worth (2014)	\$386,713	\$359,817	\$364,763
Daytime Demos (2014)			
Total Businesses	335	1,398	2,793
Total Employees	3,635	19,680	33,409
Company Headquarter Businesses	1 0.2%	4 0.3%	11 0.4%
Company Headquarter Employees	88 2.4%	700 3.6%	987 3.0%
Employee Population per Business	10.9	14.1	12.0
Residential Population per Business	14.5	25.5	28.0

This report was produced using data from private and government sources deemed to be reliable. The information herein is provided without representation or warranty.

EXPANDED PROFILE

2000-2010 Census, 2014 Estimates with 2019 Projections

Calculated using Proportional Block Groups

Lat/Lon: 41.1002/-80.7654

RF5

5532 Mahoning Ave

Youngstown, OH

Race & Ethnicity

	1 Mile		3 Miles		5 Miles	
White (2014)	4,479	92.5%	32,394	91.0%	68,534	87.6%
Black or African American (2014)	245	5.1%	2,171	6.1%	7,027	9.0%
American Indian or Alaska Native (2014)	4	0.1%	60	0.2%	148	0.2%
Asian (2014)	35	0.7%	193	0.5%	455	0.6%
Hawaiian or Pacific Islander (2014)	1	-	9	-	11	-
Other Race (2014)	19	0.4%	208	0.6%	599	0.8%
Two or More Races (2014)	59	1.2%	565	1.6%	1,475	1.9%
Not Hispanic or Latino Population (2014)	4,714	97.4%	34,556	97.1%	75,468	96.4%
Hispanic or Latino Population (2014)	128	2.6%	1,044	2.9%	2,781	3.6%
Not Hispanic or Latino Population (2019)	4,648	97.1%	34,052	96.8%	74,340	96.1%
Hispanic or Latino Population (2019)	137	2.9%	1,119	3.2%	2,995	3.9%
Not Hispanic or Latino Population (2010)	4,792	97.7%	35,148	97.4%	76,836	96.9%
Hispanic or Latino Population (2010)	115	2.3%	938	2.6%	2,495	3.1%
Not Hispanic or Latino Population (2000)	4,838	98.5%	36,460	98.3%	81,749	98.2%
Hispanic or Latino Population (2000)	76	1.5%	636	1.7%	1,536	1.8%
Projected Hispanic Annual Growth (2014 to 2019)	9	1.4%	75	1.4%	215	1.5%
Historic Hispanic Annual Growth (2000 to 2014)	52	4.9%	408	4.6%	1,245	5.8%

Age Distribution (2014)

Age Under 5	199	4.1%	1,743	4.9%	4,101	5.2%
Age 5 to 9 Years	216	4.5%	1,897	5.3%	4,396	5.6%
Age 10 to 14 Years	240	5.0%	2,043	5.7%	4,679	6.0%
Age 15 to 19 Years	248	5.1%	1,973	5.5%	4,487	5.7%
Age 20 to 24 Years	284	5.9%	2,304	6.5%	4,696	6.0%
Age 25 to 29 Years	253	5.2%	2,101	5.9%	4,358	5.6%
Age 30 to 34 Years	258	5.3%	2,049	5.8%	4,402	5.6%
Age 35 to 39 Years	247	5.1%	2,033	5.7%	4,355	5.6%
Age 40 to 44 Years	293	6.0%	2,252	6.3%	4,836	6.2%
Age 45 to 49 Years	312	6.4%	2,218	6.2%	4,932	6.3%
Age 50 to 54 Years	347	7.2%	2,545	7.1%	5,742	7.3%
Age 55 to 59 Years	393	8.1%	2,802	7.9%	6,301	8.1%
Age 60 to 64 Years	414	8.5%	2,757	7.7%	5,829	7.4%
Age 65 to 74 Years	551	11.4%	3,737	10.5%	7,839	10.0%
Age 75 to 84 Years	365	7.5%	1,993	5.6%	4,656	5.9%
Age 85 Years or Over	223	4.6%	1,154	3.2%	2,639	3.4%
Median Age	46.9		42.8		42.8	

Gender Age Distribution (2014)

Female Population	2,577	53.2%	18,620	52.3%	40,859	52.2%
Age 0 to 19 Years	444	17.2%	3,751	20.1%	8,608	21.1%
Age 20 to 64 Years	1,428	55.4%	10,774	57.9%	23,315	57.1%
Age 65 Years or Over	705	27.3%	4,095	22.0%	8,936	21.9%
Female Median Age	49.8		44.8		44.7	
Male Population	2,265	46.8%	16,980	47.7%	37,390	47.8%
Age 0 to 19 Years	459	20.3%	3,905	23.0%	9,055	24.2%
Age 20 to 64 Years	1,372	60.6%	10,285	60.6%	22,136	59.2%
Age 65 Years or Over	434	19.2%	2,789	16.4%	6,198	16.6%
Male Median Age	43.8		40.6		40.6	

This report was produced using data from private and government sources deemed to be reliable. The information herein is provided without representation or warranty.

EXPANDED PROFILE

2000-2010 Census, 2014 Estimates with 2019 Projections

Calculated using Proportional Block Groups

Lat/Lon: 41.1002/-80.7654

RF5

5532 Mahoning Ave

Youngstown, OH

Household Income Distribution (2014)

	1 Mile		3 Miles		5 Miles	
HH Income \$200,000 or More	25	1.1%	193	1.2%	544	1.6%
HH Income \$150,000 to \$199,999	52	2.4%	445	2.8%	969	2.8%
HH Income \$100,000 to \$149,999	226	10.4%	1,485	9.4%	3,365	9.8%
HH Income \$75,000 to \$99,999	334	15.3%	2,032	12.8%	4,035	11.8%
HH Income \$50,000 to \$74,999	423	19.4%	3,401	21.5%	6,840	20.0%
HH Income \$35,000 to \$49,999	309	14.2%	2,464	15.6%	5,339	15.6%
HH Income \$25,000 to \$34,999	283	13.0%	2,064	13.1%	4,519	13.2%
HH Income \$15,000 to \$24,999	279	12.8%	1,937	12.2%	4,464	13.0%
HH Income Under \$15,000	248	11.4%	1,792	11.3%	4,176	12.2%
HH Income \$35,000 or More	1,369	62.8%	10,021	63.4%	21,092	61.6%
HH Income \$75,000 or More	637	29.2%	4,155	26.3%	8,912	26.0%

Housing (2014)

	1 Mile		3 Miles		5 Miles	
Total Housing Units	2,289		16,830		36,828	
Housing Units Occupied	2,180	95.2%	15,814	94.0%	34,251	93.0%
Housing Units Owner-Occupied	1,540	70.7%	10,916	69.0%	24,711	72.1%
Housing Units, Renter-Occupied	639	29.3%	4,897	31.0%	9,540	27.9%
Housing Units, Vacant	109	4.8%	1,016	6.0%	2,577	7.0%

Marital Status (2014)

	1 Mile		3 Miles		5 Miles	
Never Married	1,315	31.4%	8,541	28.6%	18,733	28.8%
Currently Married	1,866	44.6%	14,039	46.9%	30,592	47.0%
Separated	164	3.9%	846	2.8%	2,039	3.1%
Widowed	357	8.5%	2,466	8.2%	5,473	8.4%
Divorced	485	11.6%	4,025	13.5%	8,235	12.7%

Household Type (2014)

	1 Mile		3 Miles		5 Miles	
Population Family	3,637	75.1%	27,471	77.2%	61,376	78.4%
Population Non-Family	1,048	21.6%	7,456	20.9%	15,614	20.0%
Population Group Quarters	158	3.3%	673	1.9%	1,258	1.6%
Family Households	1,345	61.7%	9,898	62.6%	21,779	63.6%
Non-Family Households	835	38.3%	5,916	37.4%	12,472	36.4%
Married Couple with Children	331	17.8%	2,669	19.0%	5,679	18.6%
Average Family Household Size	2.7		2.8		2.8	

Household Size (2014)

	1 Mile		3 Miles		5 Miles	
1 Person Households	722	33.1%	5,117	32.4%	10,851	31.7%
2 Person Households	794	36.4%	5,483	34.7%	11,733	34.3%
3 Person Households	311	14.2%	2,385	15.1%	5,268	15.4%
4 Person Households	225	10.3%	1,795	11.3%	3,877	11.3%
5 Person Households	94	4.3%	738	4.7%	1,733	5.1%
6 or More Person Households	34	1.6%	296	1.9%	789	2.3%

Household Vehicles (2014)

	1 Mile		3 Miles		5 Miles	
Households with 0 Vehicles Available	122	5.6%	952	6.0%	2,302	6.7%
Households with 1 Vehicles Available	852	39.1%	5,954	37.7%	12,692	37.1%
Households with 2 or More Vehicles Available	1,206	55.3%	8,907	56.3%	19,256	56.2%
Total Vehicles Available	3,818		27,786		59,445	
Average Vehicles Per Household	1.8		1.8		1.7	

This report was produced using data from private and government sources deemed to be reliable. The information herein is provided without representation or warranty.

EXPANDED PROFILE

2000-2010 Census, 2014 Estimates with 2019 Projections

Calculated using Proportional Block Groups

Lat/Lon: 41.1002/-80.7654

RF5

5532 Mahoning Ave Youngstown, OH	1 Mile	3 Miles	5 Miles
Labor Force (2014)			
Estimated Labor Population Age 16 Years or Over	3,984	28,851	62,929
Estimated Civilian Employed	2,436 61.1%	16,982 58.9%	35,981 57.2%
Estimated Civilian Unemployed	144 3.6%	1,180 4.1%	2,519 4.0%
Estimated in Armed Forces	6 0.2%	33 0.1%	42 0.1%
Estimated Not in Labor Force	1,398 35.1%	10,656 36.9%	24,387 38.8%
Unemployment Rate	3.6%	4.1%	4.0%
Occupation (2010)			
Occupation: Population Age 16 Years or Over	2,260	16,497	34,523
Management, Business, Financial Operations	267 11.8%	1,952 11.8%	4,049 11.7%
Professional, Related	482 21.3%	3,173 19.2%	6,644 19.2%
Service	322 14.3%	2,820 17.1%	6,507 18.8%
Sales, Office	585 25.9%	4,493 27.2%	9,125 26.4%
Farming, Fishing, Forestry	5 0.2%	32 0.2%	51 0.1%
Construct, Extraction, Maintenance	142 6.3%	1,290 7.8%	2,670 7.7%
Production, Transport Material Moving	456 20.2%	2,738 16.6%	5,477 15.9%
White Collar Workers	1,335 59.1%	9,618 58.3%	19,819 57.4%
Blue Collar Workers	925 40.9%	6,880 41.7%	14,705 42.6%
Consumer Expenditure (2014)			
Total Household Expenditure	\$104 M	\$755 M	\$1.65 B
Total Non-Retail Expenditure	\$59.9 M 57.3%	\$433 M 57.4%	\$947 M 57.3%
Total Retail Expenditure	\$44.5 M 42.7%	\$322 M 42.6%	\$704 M 42.7%
Apparel	\$4.95 M 4.7%	\$35.9 M 4.8%	\$78.7 M 4.8%
Contributions	\$3.70 M 3.5%	\$26.9 M 3.6%	\$59.4 M 3.6%
Education	\$2.32 M 2.2%	\$16.9 M 2.2%	\$37.4 M 2.3%
Entertainment	\$5.80 M 5.6%	\$42.0 M 5.6%	\$91.9 M 5.6%
Food and Beverages	\$16.2 M 15.5%	\$117 M 15.5%	\$256 M 15.5%
Furnishings and Equipment	\$4.52 M 4.3%	\$32.6 M 4.3%	\$71.2 M 4.3%
Gifts	\$2.67 M 2.6%	\$19.4 M 2.6%	\$42.7 M 2.6%
Health Care	\$6.62 M 6.3%	\$47.6 M 6.3%	\$104 M 6.3%
Household Operations	\$3.60 M 3.4%	\$26.1 M 3.5%	\$57.5 M 3.5%
Miscellaneous Expenses	\$1.77 M 1.7%	\$12.8 M 1.7%	\$27.9 M 1.7%
Personal Care	\$1.52 M 1.5%	\$11.0 M 1.5%	\$24.0 M 1.5%
Personal Insurance	\$1.02 M 1.0%	\$7.44 M 1.0%	\$16.4 M 1.0%
Reading	\$345 K 0.3%	\$2.49 M 0.3%	\$5.44 M 0.3%
Shelter	\$20.1 M 19.2%	\$145 M 19.2%	\$318 M 19.3%
Tobacco	\$720 K 0.7%	\$5.19 M 0.7%	\$11.3 M 0.7%
Transportation	\$21.1 M 20.2%	\$153 M 20.2%	\$332 M 20.1%
Utilities	\$7.46 M 7.1%	\$53.9 M 7.1%	\$118 M 7.1%
Educational Attainment (2014)			
Adult Population Age 25 Years or Over	3,499	24,976	54,662
Elementary (Grade Level 0 to 8)	67 1.9%	570 2.3%	1,494 2.7%
Some High School (Grade Level 9 to 11)	272 7.8%	1,832 7.3%	4,517 8.3%
High School Graduate	1,534 43.8%	10,395 41.6%	21,874 40.0%
Some College	737 21.1%	5,468 21.9%	12,049 22.0%
Associate Degree Only	204 5.8%	1,841 7.4%	3,701 6.8%
Bachelor Degree Only	417 11.9%	3,100 12.4%	7,118 13.0%
Graduate Degree	268 7.7%	1,771 7.1%	3,909 7.2%

This report was produced using data from private and government sources deemed to be reliable. The information herein is provided without representation or warranty.

EXPANDED PROFILE

2000-2010 Census, 2014 Estimates with 2019 Projections

Calculated using Proportional Block Groups

Lat/Lon: 41.1002/-80.7654

RF5

5532 Mahoning Ave Youngstown, OH	1 Mile		3 Miles		5 Miles	
Units In Structure (2010)						
1 Detached Unit	1,489	69.4%	11,006	70.8%	25,838	76.7%
1 Attached Unit	121	5.6%	777	5.0%	1,401	4.2%
2 to 4 Units	102	4.8%	797	5.1%	1,810	5.4%
5 to 9 Units	104	4.9%	795	5.1%	1,180	3.5%
10 to 19 Units	62	2.9%	869	5.6%	1,361	4.0%
20 to 49 Units	89	4.1%	480	3.1%	704	2.1%
50 or More Units	158	7.4%	660	4.2%	852	2.5%
Mobile Home or Trailer	20	0.9%	168	1.1%	528	1.6%
Other Structure	-	-	-	-	-	-
Homes Built By Year (2010)						
Homes Built 2005 or later	62	2.9%	383	2.5%	829	2.5%
Homes Built 2000 to 2004	144	6.7%	812	5.2%	1,553	4.6%
Homes Built 1990 to 1999	293	13.6%	1,833	11.8%	3,497	10.4%
Homes Built 1980 to 1989	278	13.0%	1,313	8.4%	2,574	7.6%
Homes Built 1970 to 1979	331	15.4%	3,480	22.4%	5,940	17.6%
Homes Built 1960 to 1969	310	14.5%	2,538	16.3%	4,909	14.6%
Homes Built 1950 to 1959	419	19.6%	2,805	18.0%	6,900	20.5%
Homes Built Before 1949	307	14.3%	2,386	15.3%	7,471	22.2%
Home Values (2010)						
Home Values \$1,000,000 or More	1	0.1%	12	0.1%	46	0.2%
Home Values \$500,000 to \$999,999	8	0.5%	44	0.4%	149	0.6%
Home Values \$400,000 to \$499,999	9	0.6%	91	0.8%	302	1.2%
Home Values \$300,000 to \$399,999	28	1.8%	152	1.4%	637	2.6%
Home Values \$200,000 to \$299,999	194	12.8%	797	7.4%	1,939	8.0%
Home Values \$150,000 to \$199,999	233	15.4%	1,665	15.5%	3,124	12.9%
Home Values \$100,000 to \$149,999	322	21.3%	3,152	29.4%	5,844	24.1%
Home Values \$70,000 to \$99,999	482	31.8%	3,078	28.7%	6,267	25.8%
Home Values \$50,000 to \$69,999	110	7.3%	1,077	10.0%	3,267	13.5%
Home Values \$25,000 to \$49,999	86	5.7%	392	3.7%	1,657	6.8%
Home Values Under \$25,000	41	2.7%	266	2.5%	1,044	4.3%
Owner-Occupied Median Home Value	\$111,760		\$112,004		\$109,005	
Renter-Occupied Median Rent	\$524		\$499		\$480	
Transportation To Work (2010)						
Drive to Work Alone	1,938	86.4%	14,065	88.0%	29,471	87.6%
Drive to Work in Carpool	129	5.7%	1,101	6.9%	2,188	6.5%
Travel to Work by Public Transportation	108	4.8%	151	0.9%	468	1.4%
Drive to Work on Motorcycle	-	-	2	-	11	-
Walk or Bicycle to Work	11	0.5%	179	1.1%	345	1.0%
Other Means	1	-	153	1.0%	382	1.1%
Work at Home	56	2.5%	337	2.1%	779	2.3%
Travel Time (2010)						
Travel to Work in 14 Minutes or Less	659	30.1%	4,999	31.9%	10,706	32.6%
Travel to Work in 15 to 29 Minutes	952	43.5%	7,436	47.5%	15,509	47.2%
Travel to Work in 30 to 59 Minutes	469	21.4%	2,395	15.3%	4,931	15.0%
Travel to Work in 60 Minutes or More	107	4.9%	821	5.2%	1,718	5.2%
Average Minutes Travel to Work	19.8		18.7		18.5	

This report was produced using data from private and government sources deemed to be reliable. The information herein is provided without representation or warranty.