

COCCA DEVELOPMENT

RETAIL SPACE FOR LEASE 1000 SOUTH FIRST STREET ROCK FALLS, IL 61071



- Join Dollar General and Rent-A-Center
- Enterprise zone incentives and property tax abatements available
- Large parking lot and tenant road sign

AVAILABLE SUITE AREA—\$12/square foot NNN:

- Approximately 10,800 square feet*
- Approximately 8,300 square feet*
- Approximately 7,300 square feet*
- Approximately 2,100 square feet*
- Approximately 1,400 square feet*
- Approximately 2,700 square feet

AVAILABLE SUITE AREA—\$3/square foot NNN:

- Approximately 8,300 square feet
- Approximately 1,700 square feet*
- Approximately 2,000 square feet*
- Approximately 865 square feet

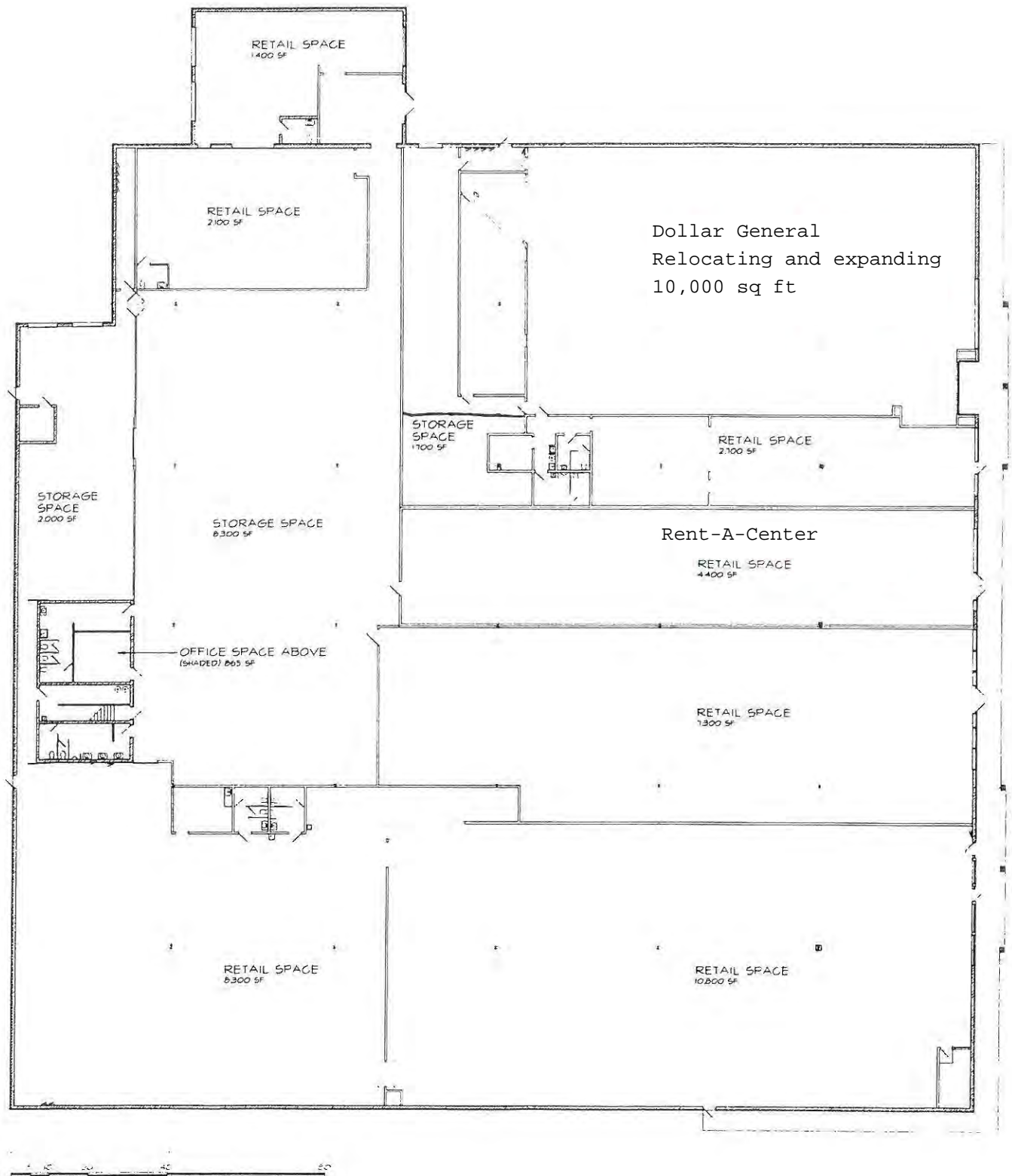
*Can be reduced or combined per space needs

NNN: Base rent plus prorata share of Real Estate Taxes, Insurance, and Common Area expenses, including but not limited to snow removal, lawn care, and parking lot maintenance. Tenant pays separately metered utilities for gas, electric, water, sewer, & trash removal.

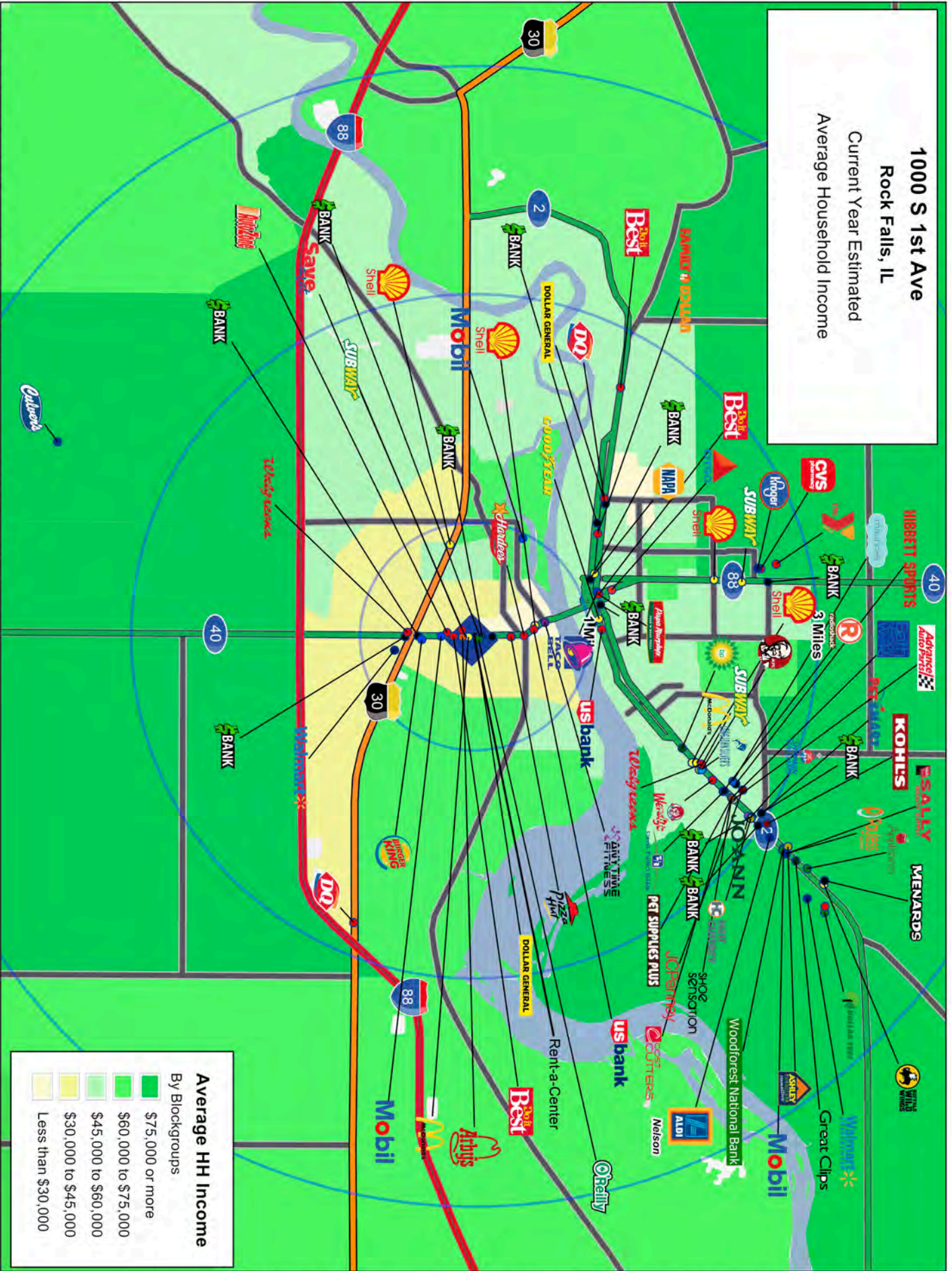


CALL 330-729-1010 FOR MORE INFORMATION

www.coccadevelopment.com



1000 S 1st Ave
Rock Falls, IL
 Current Year Estimated
 Average Household Income

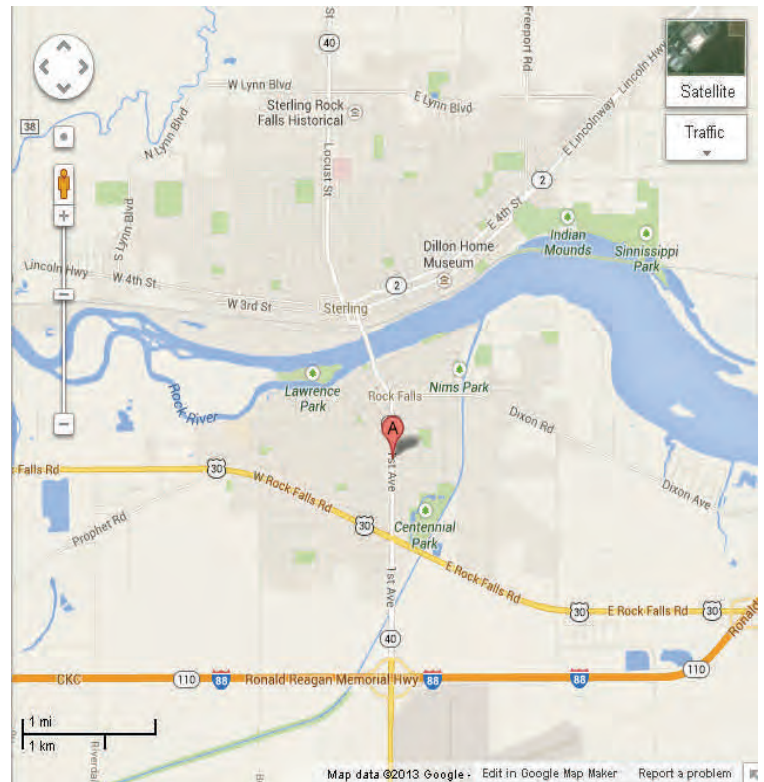


This map was produced using data from private and government sources deemed to be reliable. The information herein is provided without representation or warranty.

1000 South First Avenue Rock Falls, IL 61071

The site is ideally located on South First Avenue, approximately 1/2 mile north of Route 30 (Rock Falls Road).

The average daily traffic count directly in front of the center is approximately 19,000. It's midway between Chicago and the Quad cities. There's a supportive, small town atmosphere with approximately 10,000 residents.



Rock Falls is in Whiteside County and is separated from its sister city, Sterling, to the north by the Rock River. You can easily get to Rock Falls by interstate 88 or scenic highway US Route 30 or Illinois Route 40.

COCCA DEVELOPMENT, LTD

1000 South First Avenue Rock Falls, IL 61071

AT A GLANCE

- ◆ Over the past decade the State of Illinois has become a leading advocate for historic preservation
- ◆ Located 641 feet above sea level
- ◆ Rock Falls was incorporated in 1889
- ◆ City has 19 parks totaling over 100 acres
- ◆ Birthplace of baseball players Cal Howe and Gary Kolb and actress Zelma O'Neal.

GRAPHIC PROFILE

2000-2010 Census, 2014 Estimates with 2019 Projections

Calculated using Proportional Block Groups

Lat/Lon: 41.7734/-89.6894

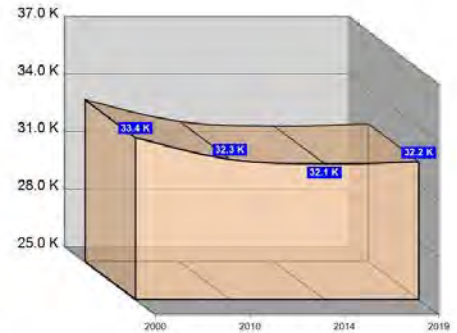
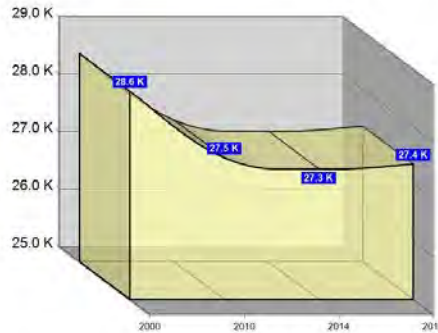
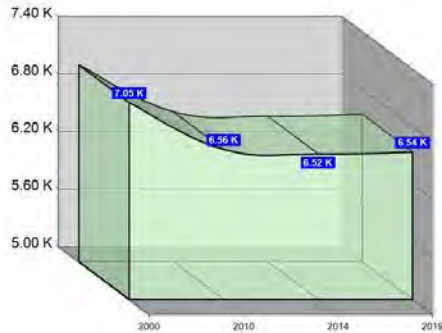
RGRAP3

1000 S 1st Ave

Rock Falls, IL

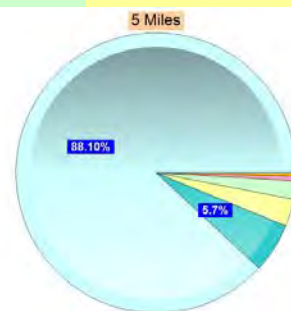
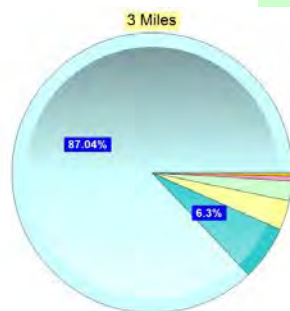
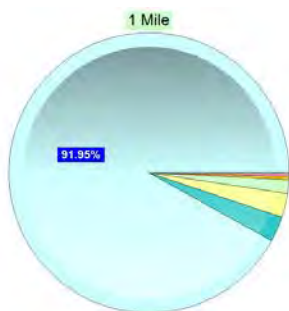
Population

	1 Mile	3 Miles	5 Miles
Estimated Population (2014)	6,516	27,266	32,078
Projected Population (2019)	6,538	27,351	32,179
Census Population (2010)	6,564	27,462	32,310
Census Population (2000)	7,053	28,620	33,441
Projected Annual Growth (2014-2019)	21 0.1%	85 0.1%	101 0.1%
Historical Annual Growth (2010-2014)	-48 -1.9%	-196 -1.1%	-232 -0.9%
Historical Annual Growth (2000-2010)	-489 -0.7%	-1,158 -0.4%	-1,131 -0.3%
Estimated Population Density (2014)	2,076 psm	965 psm	409 psm
Trade Area Size	3.1 sq mi	28.3 sq mi	78.5 sq mi



Race and Ethnicity (2014)

	1 Mile	3 Miles	5 Miles
Not Hispanic or Latino Population	5,492 84.3%	21,663 79.5%	26,016 81.1%
White	5,269 95.9%	20,531 94.8%	24,754 95.2%
Black or African American	88 1.6%	543 2.5%	600 2.3%
American Indian or Alaska Native	14 0.3%	33 0.2%	40 0.2%
Asian	21 0.4%	141 0.7%	168 0.6%
Hawaiian or Pacific Islander	- -	- -	- -
Other Race	- -	5 -	5 -
Two or More Races	100 1.8%	410 1.9%	448 1.7%
Hispanic or Latino Population	1,024 15.7%	5,603 20.5%	6,063 18.9%
White	722 70.5%	3,203 57.2%	3,508 57.9%
Black or African American	15 1.5%	79 1.4%	80 1.3%
American Indian or Alaska Native	9 0.9%	68 1.2%	74 1.2%
Asian	2 0.2%	7 0.1%	7 0.1%
Hispanic Hawaiian or Pacific Islander	5 0.5%	6 0.1%	6 0.1%
Other Race	190 18.6%	1,718 30.7%	1,829 30.2%
Two or More Races	81 7.9%	523 9.3%	559 9.2%



White Black or African American American Indian or Alaska Native Asian Hawaiian or Pacific Islander Other Race 2+ Races

This report was produced using data from private and government sources deemed to be reliable. The information herein is provided without representation or warranty.

GRAPHIC PROFILE

2000-2010 Census, 2014 Estimates with 2019 Projections

Calculated using Proportional Block Groups

Lat/Lon: 41.7734/-89.6894

RGRAP3

1000 S 1st Ave Rock Falls, IL	1 Mile	3 Miles	5 Miles
Age Distribution (2014)			
Age Under 5 Years	450 6.9%	1,870 6.9%	2,090 6.5%
Age 5 to 9 Years	421 6.5%	1,818 6.7%	2,079 6.5%
Age 10 to 14 Years	409 6.3%	1,764 6.5%	2,049 6.4%
Age 15 to 19 Years	387 5.9%	1,750 6.4%	2,051 6.4%
Age 20 to 24 Years	472 7.2%	1,891 6.9%	2,102 6.6%
Age 25 to 29 Years	394 6.1%	1,637 6.0%	1,817 5.7%
Age 30 to 34 Years	375 5.8%	1,628 6.0%	1,851 5.8%
Age 35 to 39 Years	373 5.7%	1,532 5.6%	1,770 5.5%
Age 40 to 44 Years	403 6.2%	1,620 5.9%	1,894 5.9%
Age 45 to 49 Years	403 6.2%	1,685 6.2%	2,004 6.2%
Age 50 to 54 Years	468 7.2%	1,877 6.9%	2,258 7.0%
Age 55 to 59 Years	489 7.5%	1,882 6.9%	2,317 7.2%
Age 60 to 64 Years	413 6.3%	1,651 6.1%	2,041 6.4%
Age 65 to 69 Years	324 5.0%	1,323 4.9%	1,642 5.1%
Age 70 to 74 Years	239 3.7%	1,020 3.7%	1,272 4.0%
Age 75 to 79 Years	183 2.8%	884 3.2%	1,052 3.3%
Age 80 to 84 Years	150 2.3%	685 2.5%	820 2.6%
Age 85 Years or Over	163 2.5%	750 2.7%	968 3.0%
Median Age	38.7	38.4	39.8
Generation (2014)			
Generation 9/11 Millennials (Age Under 10 Years)	871 13.4%	3,688 13.5%	4,169 13.0%
Gen Y to Echo Boomers (Age 10 to 29 Years)	1,663 25.5%	7,042 25.8%	8,020 25.0%
Gen Xers (Age 30 to 49 Years)	1,553 23.8%	6,466 23.7%	7,519 23.4%
Baby Boomers (Age 50 to 69 Years)	1,694 26.0%	6,732 24.7%	8,258 25.7%
Silent Generation (Age 70 to 79 Years)	423 6.5%	1,903 7.0%	2,324 7.2%
G.I. Generation (Age 80 Years or Over)	313 4.8%	1,435 5.3%	1,788 5.6%

This report was produced using data from private and government sources deemed to be reliable. The information herein is provided without representation or warranty.

GRAPHIC PROFILE

2000-2010 Census, 2014 Estimates with 2019 Projections

Calculated using Proportional Block Groups

Lat/Lon: 41.7734/-89.6894

RGRAP3

1000 S 1st Ave

Rock Falls, IL

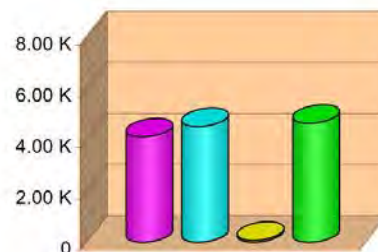
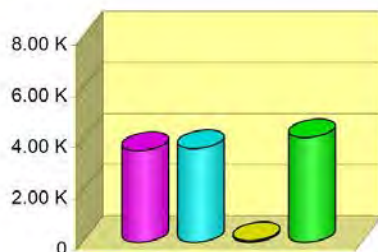
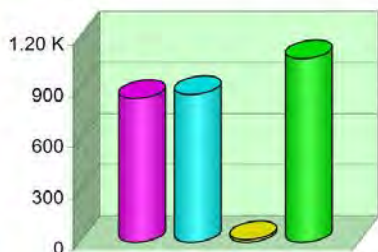
1 Mile

3 Miles

5 Miles

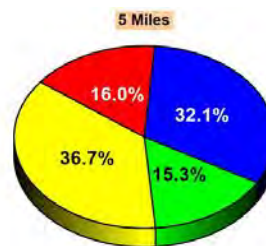
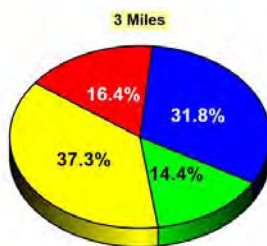
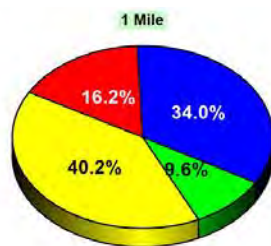
Household Type (2014)

	1 Mile	3 Miles	5 Miles
Total Households	2,803	11,405	13,373
Family Households	1,711 30.9%	7,247 32.1%	8,645 33.8%
Family Households with Children	844 49.3%	3,584 49.5%	4,120 47.7%
Family Households No Children	867 50.7%	3,663 50.5%	4,524 52.3%
Non-Family Households	1,092 30.9%	4,158 32.1%	4,728 33.8%
Non-Family Households with Children	15 1.4%	64 1.5%	75 1.6%
Non-Family Households No Children	1,077 98.6%	4,093 98.5%	4,654 98.4%



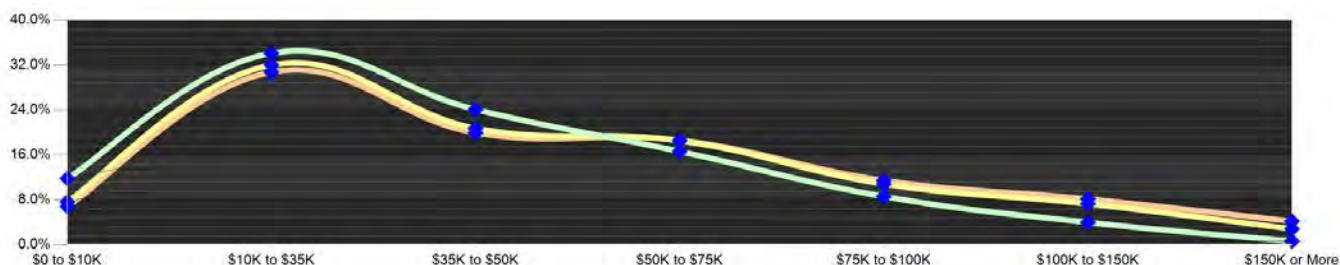
Education Attainment (2014)

	1 Mile	3 Miles	5 Miles
Elementary or Some High School	702 16.2%	2,925 16.4%	3,387 16.0%
High School Graduate	1,747 40.2%	6,647 37.3%	7,775 36.7%
Some College or Associate Degree	1,476 34.0%	5,660 31.8%	6,799 32.1%
Bachelor or Graduate Degree	418 9.6%	2,571 14.4%	3,243 15.3%



Household Income (2014)

	1 Mile	3 Miles	5 Miles
Estimated Average Household Income	\$40,447	\$46,908	\$50,942
Estimated Median Household Income	\$36,454	\$39,029	\$41,797
HH Income Under \$10,000	332 11.8%	875 7.7%	913 6.8%
HH Income \$10,000 to \$34,999	957 34.1%	3,653 32.0%	4,116 30.8%
HH Income \$35,000 to \$49,999	676 24.1%	2,368 20.8%	2,669 20.0%
HH Income \$50,000 to \$74,999	466 16.6%	2,116 18.6%	2,491 18.6%
HH Income \$75,000 to \$99,999	112 4.0%	832 7.3%	1,091 8.2%
HH Income \$100,000 to \$149,999	112 4.0%	832 7.3%	1,091 8.2%
HH Income \$150,000 or More	18 0.6%	324 2.8%	560 4.2%



This report was produced using data from private and government sources deemed to be reliable. The information herein is provided without representation or warranty.

EXPANDED PROFILE

2000-2010 Census, 2014 Estimates with 2019 Projections

Calculated using Proportional Block Groups

Lat/Lon: 41.7734/-89.6894

RF5

1000 S 1st Ave Rock Falls, IL	1 Mile	3 Miles	5 Miles
Population			
Estimated Population (2014)	6,516	27,266	32,078
Projected Population (2019)	6,538	27,351	32,179
Census Population (2010)	6,564	27,462	32,310
Census Population (2000)	7,053	28,620	33,441
Projected Annual Growth (2014 to 2019)	21 0.1%	85 0.1%	101 0.1%
Historical Annual Growth (2010 to 2014)	-48 -0.2%	-196 -0.2%	-232 -0.2%
Historical Annual Growth (2000 to 2010)	-489 -0.7%	-1,158 -0.4%	-1,131 -0.3%
Estimated Population Density (2014)	2,076 <i>psm</i>	965 <i>psm</i>	409 <i>psm</i>
Trade Area Size	3.14 <i>sq mi</i>	28.26 <i>sq mi</i>	78.49 <i>sq mi</i>
Households			
Estimated Households (2014)	2,803	11,405	13,373
Projected Households (2019)	2,863	11,650	13,660
Census Households (2010)	2,762	11,238	13,177
Census Households (2000)	2,916	11,554	13,313
Estimated Households with Children (2014)	859 30.6%	3,648 32.0%	4,195 31.4%
Estimated Average Household Size (2014)	2.31	2.36	2.36
Average Household Income			
Estimated Average Household Income (2014)	\$41,776	\$52,182	\$57,207
Projected Average Household Income (2019)	\$45,068	\$56,624	\$62,087
Estimated Average Family Income (2014)	\$48,086	\$59,668	\$65,805
Median Household Income			
Estimated Median Household Income (2014)	\$36,593	\$42,536	\$45,385
Projected Median Household Income (2019)	\$39,349	\$45,893	\$48,961
Estimated Median Family Income (2014)	\$42,464	\$50,719	\$54,673
Per Capita Income			
Estimated Per Capita Income (2014)	\$18,017	\$21,929	\$23,960
Projected Per Capita Income (2019)	\$19,786	\$24,231	\$26,479
Estimated Per Capita income 5 Year Growth	\$1,769 9.8%	\$2,301 10.5%	\$2,519 10.5%
Estimated Average Household Net Worth (2014)	\$269,433	\$310,401	\$338,154
Daytime Demos (2014)			
Total Businesses	305	1,188	1,426
Total Employees	2,686	12,880	17,676
Company Headquarter Businesses	3 0.9%	7 0.6%	9 0.6%
Company Headquarter Employees	160 6.0%	431 3.3%	655 3.7%
Employee Population per Business	8.8	10.8	12.4
Residential Population per Business	21.4	23.0	22.5

This report was produced using data from private and government sources deemed to be reliable. The information herein is provided without representation or warranty.

EXPANDED PROFILE

2000-2010 Census, 2014 Estimates with 2019 Projections

Calculated using Proportional Block Groups

Lat/Lon: 41.7734/-89.6894

RF5

1000 S 1st Ave Rock Falls, IL	1 Mile		3 Miles		5 Miles	
Race & Ethnicity						
White (2014)	5,992	91.9%	23,733	87.0%	28,262	88.1%
Black or African American (2014)	103	1.6%	622	2.3%	680	2.1%
American Indian or Alaska Native (2014)	24	0.4%	101	0.4%	114	0.4%
Asian (2014)	23	0.3%	148	0.5%	175	0.5%
Hawaiian or Pacific Islander (2014)	5	0.1%	6	-	6	-
Other Race (2014)	190	2.9%	1,723	6.3%	1,834	5.7%
Two or More Races (2014)	181	2.8%	933	3.4%	1,008	3.1%
Not Hispanic or Latino Population (2014)	5,492	84.3%	21,663	79.5%	26,016	81.1%
Hispanic or Latino Population (2014)	1,024	15.7%	5,603	20.5%	6,063	18.9%
Not Hispanic or Latino Population (2019)	5,434	83.1%	21,319	77.9%	25,652	79.7%
Hispanic or Latino Population (2019)	1,104	16.9%	6,032	22.1%	6,527	20.3%
Not Hispanic or Latino Population (2010)	5,594	85.2%	22,155	80.7%	26,568	82.2%
Hispanic or Latino Population (2010)	970	14.8%	5,307	19.3%	5,742	17.8%
Not Hispanic or Latino Population (2000)	6,233	88.4%	24,201	84.6%	28,644	85.7%
Hispanic or Latino Population (2000)	820	11.6%	4,419	15.4%	4,797	14.3%
Projected Hispanic Annual Growth (2014 to 2019)	80	1.6%	429	1.5%	465	1.5%
Historic Hispanic Annual Growth (2000 to 2014)	204	1.8%	1,184	1.9%	1,266	1.9%
Age Distribution (2014)						
Age Under 5	450	6.9%	1,870	6.9%	2,090	6.5%
Age 5 to 9 Years	421	6.5%	1,818	6.7%	2,079	6.5%
Age 10 to 14 Years	409	6.3%	1,764	6.5%	2,049	6.4%
Age 15 to 19 Years	387	5.9%	1,750	6.4%	2,051	6.4%
Age 20 to 24 Years	472	7.2%	1,891	6.9%	2,102	6.6%
Age 25 to 29 Years	394	6.1%	1,637	6.0%	1,817	5.7%
Age 30 to 34 Years	375	5.8%	1,628	6.0%	1,851	5.8%
Age 35 to 39 Years	373	5.7%	1,532	5.6%	1,770	5.5%
Age 40 to 44 Years	403	6.2%	1,620	5.9%	1,894	5.9%
Age 45 to 49 Years	403	6.2%	1,685	6.2%	2,004	6.2%
Age 50 to 54 Years	468	7.2%	1,877	6.9%	2,258	7.0%
Age 55 to 59 Years	489	7.5%	1,882	6.9%	2,317	7.2%
Age 60 to 64 Years	413	6.3%	1,651	6.1%	2,041	6.4%
Age 65 to 74 Years	563	8.6%	2,342	8.6%	2,914	9.1%
Age 75 to 84 Years	333	5.1%	1,569	5.8%	1,873	5.8%
Age 85 Years or Over	163	2.5%	750	2.7%	968	3.0%
Median Age	38.7		38.4		39.8	
Gender Age Distribution (2014)						
Female Population	3,333	51.1%	14,097	51.7%	16,556	51.6%
Age 0 to 19 Years	806	24.2%	3,540	25.1%	4,063	24.5%
Age 20 to 64 Years	1,925	57.8%	7,795	55.3%	9,130	55.1%
Age 65 Years or Over	602	18.1%	2,762	19.6%	3,362	20.3%
Female Median Age	39.9		40.2		41.5	
Male Population	3,183	48.9%	13,168	48.3%	15,523	48.4%
Age 0 to 19 Years	861	27.1%	3,662	27.8%	4,206	27.1%
Age 20 to 64 Years	1,865	58.6%	7,608	57.8%	8,925	57.5%
Age 65 Years or Over	457	14.4%	1,899	14.4%	2,392	15.4%
Male Median Age	37.2		36.6		38.1	

This report was produced using data from private and government sources deemed to be reliable. The information herein is provided without representation or warranty.

EXPANDED PROFILE

2000-2010 Census, 2014 Estimates with 2019 Projections

Calculated using Proportional Block Groups

Lat/Lon: 41.7734/-89.6894

RF5

1000 S 1st Ave Rock Falls, IL	1 Mile		3 Miles		5 Miles	
Household Income Distribution (2014)						
HH Income \$200,000 or More	11	0.4%	123	1.1%	236	1.8%
HH Income \$150,000 to \$199,999	7	0.3%	200	1.8%	324	2.4%
HH Income \$100,000 to \$149,999	112	4.0%	832	7.3%	1,091	8.2%
HH Income \$75,000 to \$99,999	242	8.6%	1,237	10.8%	1,533	11.5%
HH Income \$50,000 to \$74,999	466	16.6%	2,116	18.6%	2,491	18.6%
HH Income \$35,000 to \$49,999	676	24.1%	2,368	20.8%	2,669	20.0%
HH Income \$25,000 to \$34,999	389	13.9%	1,637	14.4%	1,835	13.7%
HH Income \$15,000 to \$24,999	443	15.8%	1,583	13.9%	1,780	13.3%
HH Income Under \$15,000	456	16.3%	1,308	11.5%	1,413	10.6%
HH Income \$35,000 or More	1,515	54.0%	6,876	60.3%	8,344	62.4%
HH Income \$75,000 or More	372	13.3%	2,393	21.0%	3,185	23.8%
Housing (2014)						
Total Housing Units	3,010		12,250		14,337	
Housing Units Occupied	2,803	93.1%	11,405	93.1%	13,373	93.3%
Housing Units Owner-Occupied	1,750	62.4%	7,449	65.3%	9,129	68.3%
Housing Units, Renter-Occupied	1,053	37.6%	3,955	34.7%	4,244	31.7%
Housing Units, Vacant	207	6.9%	845	6.9%	964	6.7%
Marital Status (2014)						
Never Married	1,607	30.7%	6,468	29.6%	7,366	28.5%
Currently Married	2,220	42.4%	9,783	44.8%	12,101	46.8%
Separated	232	4.4%	850	3.9%	920	3.6%
Widowed	444	8.5%	1,743	8.0%	2,099	8.1%
Divorced	734	14.0%	2,970	13.6%	3,375	13.1%
Household Type (2014)						
Population Family	4,991	76.6%	21,248	77.9%	25,155	78.4%
Population Non-Family	1,490	22.9%	5,630	20.6%	6,387	19.9%
Population Group Quarters	35	0.5%	388	1.4%	536	1.7%
Family Households	1,711	61.0%	7,247	63.5%	8,645	64.6%
Non-Family Households	1,092	39.0%	4,158	36.5%	4,728	35.4%
Married Couple with Children	432	19.5%	1,924	19.7%	2,322	19.2%
Average Family Household Size	2.9		2.9		2.9	
Household Size (2014)						
1 Person Households	921	32.8%	3,545	31.1%	4,038	30.2%
2 Person Households	888	31.7%	3,735	32.8%	4,538	33.9%
3 Person Households	431	15.4%	1,715	15.0%	1,980	14.8%
4 Person Households	313	11.2%	1,335	11.7%	1,582	11.8%
5 Person Households	165	5.9%	679	6.0%	786	5.9%
6 or More Person Households	86	3.1%	394	3.5%	449	3.4%
Household Vehicles (2014)						
Households with 0 Vehicles Available	272	9.7%	938	8.2%	1,032	7.7%
Households with 1 Vehicles Available	1,310	46.7%	4,717	41.4%	5,250	39.3%
Households with 2 or More Vehicles Available	1,221	43.6%	5,749	50.4%	7,091	53.0%
Total Vehicles Available	4,157		18,204		22,212	
Average Vehicles Per Household	1.5		1.6		1.7	

This report was produced using data from private and government sources deemed to be reliable. The information herein is provided without representation or warranty.

EXPANDED PROFILE

2000-2010 Census, 2014 Estimates with 2019 Projections

Calculated using Proportional Block Groups

Lat/Lon: 41.7734/-89.6894

RF5

1000 S 1st Ave

Rock Falls, IL

Labor Force (2014)

	1 Mile		3 Miles		5 Miles	
Estimated Labor Population Age 16 Years or Over	5,123		21,099		24,933	
Estimated Civilian Employed	2,831	55.3%	11,771	55.8%	13,931	55.9%
Estimated Civilian Unemployed	364	7.1%	1,392	6.6%	1,518	6.1%
Estimated in Armed Forces	-	-	1	-	2	-
Estimated Not in Labor Force	1,928	37.6%	7,935	37.6%	9,482	38.0%
Unemployment Rate	7.1%		6.6%		6.1%	

Occupation (2010)

	1 Mile		3 Miles		5 Miles	
Occupation: Population Age 16 Years or Over	2,910		12,009		14,265	
Management, Business, Financial Operations	207	7.1%	1,053	8.8%	1,309	9.2%
Professional, Related	382	13.1%	1,992	16.6%	2,462	17.3%
Service	563	19.3%	2,422	20.2%	2,849	20.0%
Sales, Office	815	28.0%	3,145	26.2%	3,701	25.9%
Farming, Fishing, Forestry	4	0.1%	27	0.2%	41	0.3%
Construct, Extraction, Maintenance	224	7.7%	768	6.4%	960	6.7%
Production, Transport Material Moving	715	24.6%	2,603	21.7%	2,942	20.6%
White Collar Workers	1,404	48.2%	6,189	51.5%	7,472	52.4%
Blue Collar Workers	1,506	51.8%	5,820	48.5%	6,792	47.6%

Consumer Expenditure (2014)

	1 Mile		3 Miles		5 Miles	
Total Household Expenditure	\$109 M		\$512 M		\$638 M	
Total Non-Retail Expenditure	\$62.2 M	57.1%	\$293 M	57.3%	\$366 M	57.3%
Total Retail Expenditure	\$46.8 M	42.9%	\$219 M	42.7%	\$272 M	42.7%
Apparel	\$5.19 M	4.8%	\$24.4 M	4.8%	\$30.4 M	4.8%
Contributions	\$3.61 M	3.3%	\$17.8 M	3.5%	\$22.8 M	3.6%
Education	\$2.28 M	2.1%	\$11.2 M	2.2%	\$14.2 M	2.2%
Entertainment	\$6.00 M	5.5%	\$28.4 M	5.5%	\$35.5 M	5.6%
Food and Beverages	\$17.3 M	15.9%	\$80.2 M	15.7%	\$99.1 M	15.5%
Furnishings and Equipment	\$4.52 M	4.1%	\$21.7 M	4.2%	\$27.3 M	4.3%
Gifts	\$2.63 M	2.4%	\$12.8 M	2.5%	\$16.3 M	2.6%
Health Care	\$7.17 M	6.6%	\$32.9 M	6.4%	\$40.4 M	6.3%
Household Operations	\$3.55 M	3.3%	\$17.3 M	3.4%	\$21.9 M	3.4%
Miscellaneous Expenses	\$1.89 M	1.7%	\$8.80 M	1.7%	\$10.9 M	1.7%
Personal Care	\$1.59 M	1.5%	\$7.46 M	1.5%	\$9.26 M	1.5%
Personal Insurance	\$1.01 M	0.9%	\$4.94 M	1.0%	\$6.28 M	1.0%
Reading	\$357 K	0.3%	\$1.68 M	0.3%	\$2.09 M	0.3%
Shelter	\$20.8 M	19.1%	\$98.1 M	19.2%	\$123 M	19.2%
Tobacco	\$831 K	0.8%	\$3.68 M	0.7%	\$4.46 M	0.7%
Transportation	\$22.1 M	20.2%	\$104 M	20.2%	\$128 M	20.1%
Utilities	\$8.16 M	7.5%	\$37.3 M	7.3%	\$45.8 M	7.2%

Educational Attainment (2014)

	1 Mile		3 Miles		5 Miles	
Adult Population Age 25 Years or Over	4,343		17,803		21,205	
Elementary (Grade Level 0 to 8)	211	4.9%	1,169	6.6%	1,342	6.3%
Some High School (Grade Level 9 to 11)	491	11.3%	1,756	9.9%	2,044	9.6%
High School Graduate	1,747	40.2%	6,647	37.3%	7,775	36.7%
Some College	1,137	26.2%	4,162	23.4%	4,933	23.3%
Associate Degree Only	339	7.8%	1,499	8.4%	1,866	8.8%
Bachelor Degree Only	318	7.3%	1,805	10.1%	2,237	10.5%
Graduate Degree	100	2.3%	766	4.3%	1,007	4.7%

This report was produced using data from private and government sources deemed to be reliable. The information herein is provided without representation or warranty.

EXPANDED PROFILE

2000-2010 Census, 2014 Estimates with 2019 Projections

Calculated using Proportional Block Groups

Lat/Lon: 41.7734/-89.6894

RF5

1000 S 1st Ave

Rock Falls, IL

Units In Structure (2010)

	1 Mile		3 Miles		5 Miles	
1 Detached Unit	2,041	73.9%	8,369	74.5%	10,014	76.0%
1 Attached Unit	95	3.4%	289	2.6%	363	2.8%
2 to 4 Units	344	12.4%	1,179	10.5%	1,239	9.4%
5 to 9 Units	80	2.9%	470	4.2%	498	3.8%
10 to 19 Units	44	1.6%	146	1.3%	147	1.1%
20 to 49 Units	49	1.8%	218	1.9%	236	1.8%
50 or More Units	85	3.1%	301	2.7%	317	2.4%
Mobile Home or Trailer	24	0.9%	267	2.4%	363	2.8%
Other Structure	-	-	-	-	-	-

Homes Built By Year (2010)

Homes Built 2005 or later	54	2.0%	294	2.6%	407	3.1%
Homes Built 2000 to 2004	72	2.6%	459	4.1%	580	4.4%
Homes Built 1990 to 1999	154	5.6%	843	7.5%	1,092	8.3%
Homes Built 1980 to 1989	134	4.9%	620	5.5%	788	6.0%
Homes Built 1970 to 1979	392	14.2%	1,598	14.2%	2,018	15.3%
Homes Built 1960 to 1969	431	15.6%	1,519	13.5%	1,808	13.7%
Homes Built 1950 to 1959	444	16.1%	1,987	17.7%	2,207	16.7%
Homes Built Before 1949	1,080	39.1%	3,918	34.9%	4,277	32.5%

Home Values (2010)

Home Values \$1,000,000 or More	6	0.4%	29	0.4%	38	0.4%
Home Values \$500,000 to \$999,999	38	2.2%	120	1.6%	179	2.0%
Home Values \$400,000 to \$499,999	21	1.2%	95	1.3%	129	1.4%
Home Values \$300,000 to \$399,999	43	2.5%	256	3.5%	358	4.0%
Home Values \$200,000 to \$299,999	91	5.3%	514	7.0%	762	8.5%
Home Values \$150,000 to \$199,999	76	4.4%	624	8.5%	936	10.4%
Home Values \$100,000 to \$149,999	271	15.8%	1,492	20.4%	1,878	20.9%
Home Values \$70,000 to \$99,999	563	32.8%	2,136	29.2%	2,351	26.2%
Home Values \$50,000 to \$69,999	377	22.0%	1,279	17.5%	1,396	15.6%
Home Values \$25,000 to \$49,999	202	11.8%	540	7.4%	629	7.0%
Home Values Under \$25,000	29	1.7%	228	3.1%	312	3.5%
Owner-Occupied Median Home Value	\$82,796		\$95,958		\$103,891	
Renter-Occupied Median Rent	\$468		\$494		\$491	

Transportation To Work (2010)

Drive to Work Alone	2,365	82.4%	9,502	80.7%	11,457	81.9%
Drive to Work in Carpool	300	10.5%	1,367	11.6%	1,502	10.7%
Travel to Work by Public Transportation	47	1.6%	153	1.3%	171	1.2%
Drive to Work on Motorcycle	-	-	6	0.1%	8	0.1%
Walk or Bicycle to Work	113	3.9%	456	3.9%	488	3.5%
Other Means	12	0.4%	58	0.5%	66	0.5%
Work at Home	35	1.2%	235	2.0%	304	2.2%

Travel Time (2010)

Travel to Work in 14 Minutes or Less	1,513	53.3%	6,321	54.8%	7,405	54.1%
Travel to Work in 15 to 29 Minutes	930	32.8%	3,542	30.7%	4,251	31.1%
Travel to Work in 30 to 59 Minutes	327	11.5%	1,311	11.4%	1,464	10.7%
Travel to Work in 60 Minutes or More	66	2.3%	368	3.2%	571	4.2%
Average Minutes Travel to Work	13.4		12.9		13.1	

This report was produced using data from private and government sources deemed to be reliable. The information herein is provided without representation or warranty.