

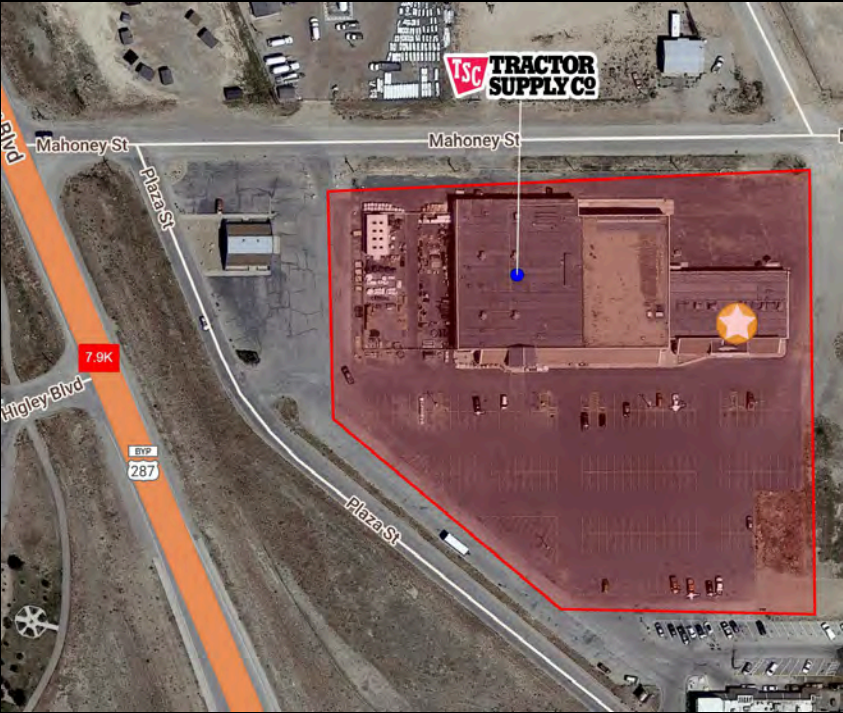
RETAIL SPACE FOR LEASE

2201 East Cedar Street
Rawlins, WY 82301

\$10/sf + NNN*

*\$1.25/sf NNN includes but not limited to Real Estate Taxes, Insurance, and CAM (such as parking lot maintenance, snow removal, lawn care, etc.)

Aerial – Site View



Demographic Data

	1 mi radius	5 mi radius	10 mi radius
Estimated Population (2021)	1,831	8,908	8,998
Projected Population (2026)	1,749	8,597	8,686
Estimated Households (2021)	718	3,577	3,616
Projected Households (2026)	650	3,265	3,300
Estimated Average Household Income (2021)	\$110,624	\$103,626	\$103,876
Projected Average Household Income (2026)	\$133,954	\$120,593	\$120,898
Total Businesses	112	362	364
Total Employees	858	3,249	3,263

Space Details



Up to 28,767 sf available in center with Tractor Supply – currently separate suites but can be combined as needed per tenant specs
18,776 sf – former grocery store
9,991 sf – former Dollar Tree

Large parking lot; tenant pylon sign

COCCA DEVELOPMENT, LTD

100 DEBARTOLO PLACE SUITE 400 BOARDMAN, OHIO 44512

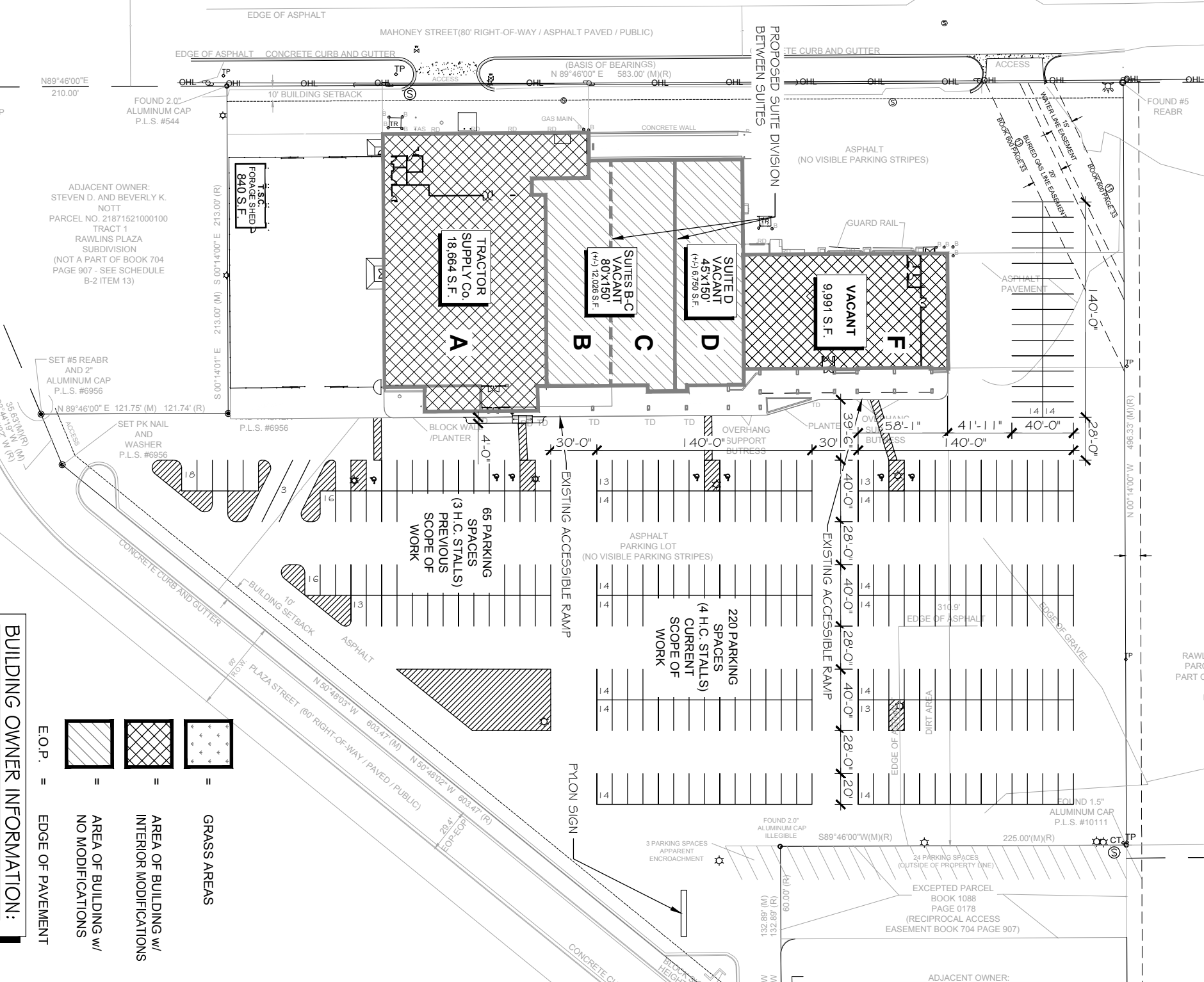
(330) 729-1010

WWW.COCCADEVELOPMENT.COM



GENERAL SITE PLAN

SCALE: 1" = 80'-0"



BUILDING OWNER INFORMATION:

COCCA DEVELOPMENT, LTD.
100 DEBAROLO PLACE - SUITE 400
YOUNGSTOWN, OHIO 44512

- E.O.P. = EDGE OF PAVEMENT
- [Hatched Box] = AREA OF BUILDING W/ NO MODIFICATIONS
 - [Cross-hatched Box] = AREA OF BUILDING W/ INTERIOR MODIFICATIONS
 - [Dotted Box] = GRASS AREAS





10 mi Radius

5 mi Radius

1 mi Radius

Rowles

71

80

80

80

76

80

Hwy 287

Haystack
Mountains HP

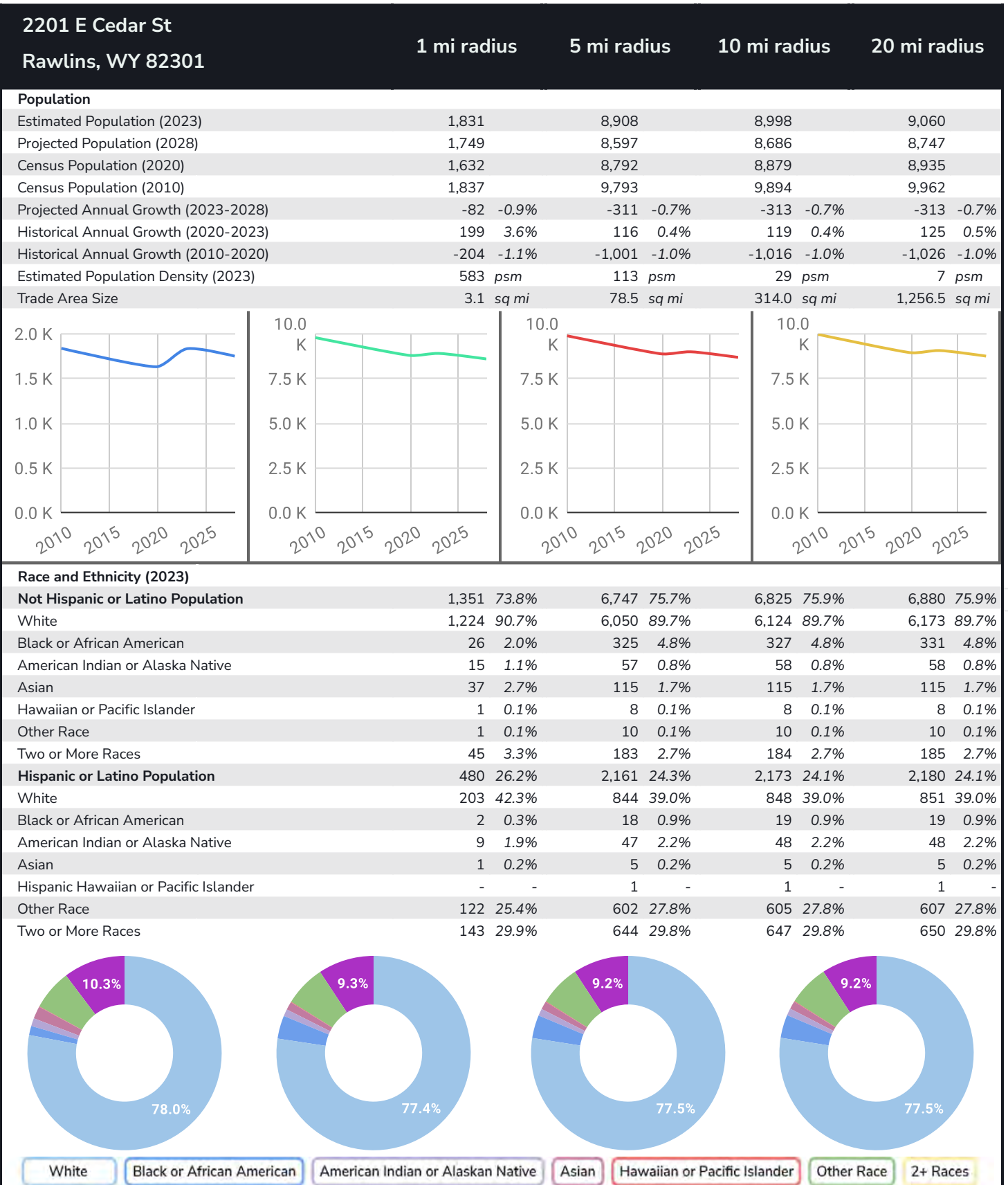
Cherokee Peak

Chokecherry
Knob

Graphic Profile

2010-2020 Census, 2023 Estimates with 2028 Projections
Calculated using Weighted Block Centroid from Block Groups

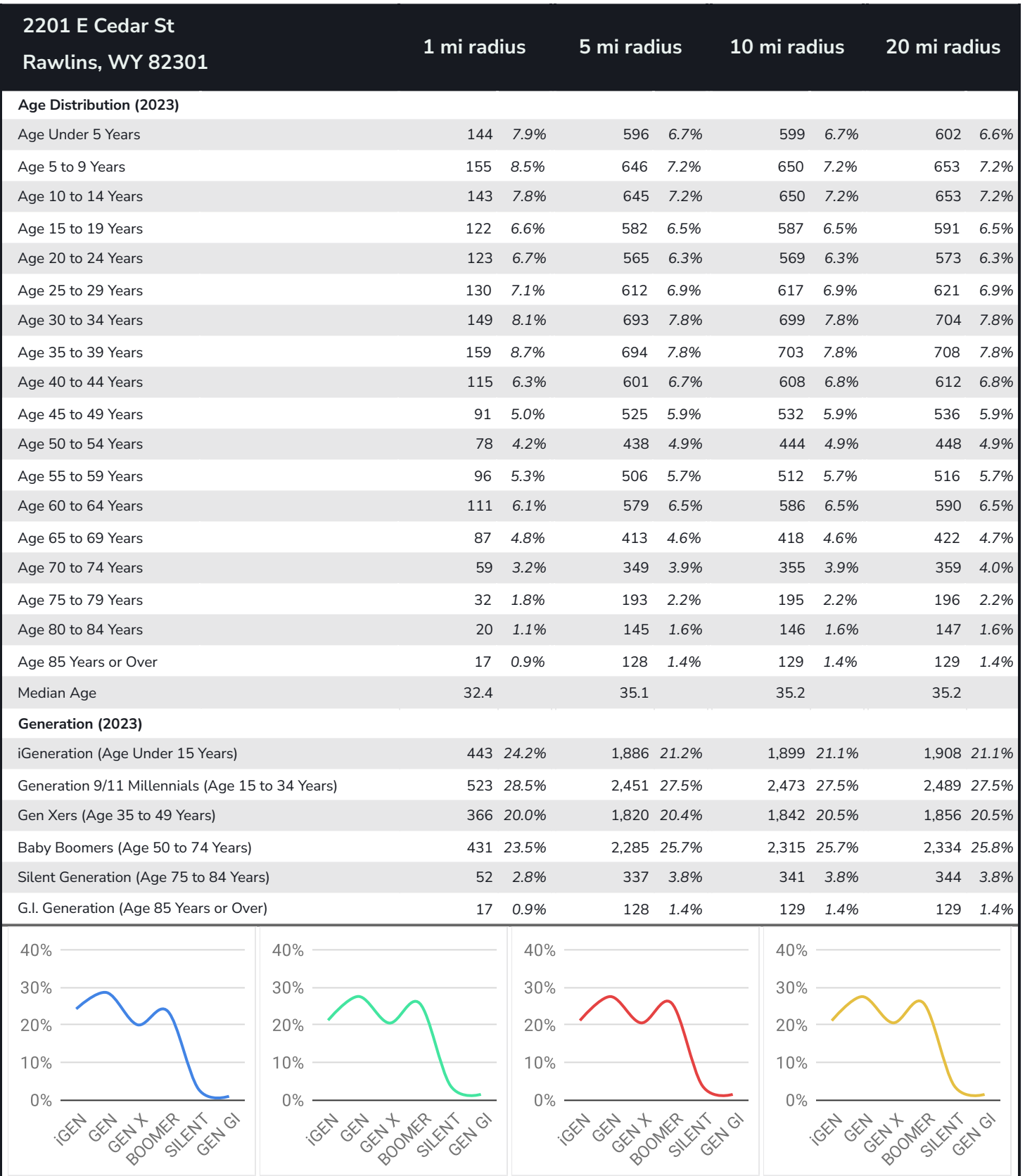
Lat/Lon: 41.7947/-107.2122



Graphic Profile

2010-2020 Census, 2023 Estimates with 2028 Projections
Calculated using Weighted Block Centroid from Block Groups

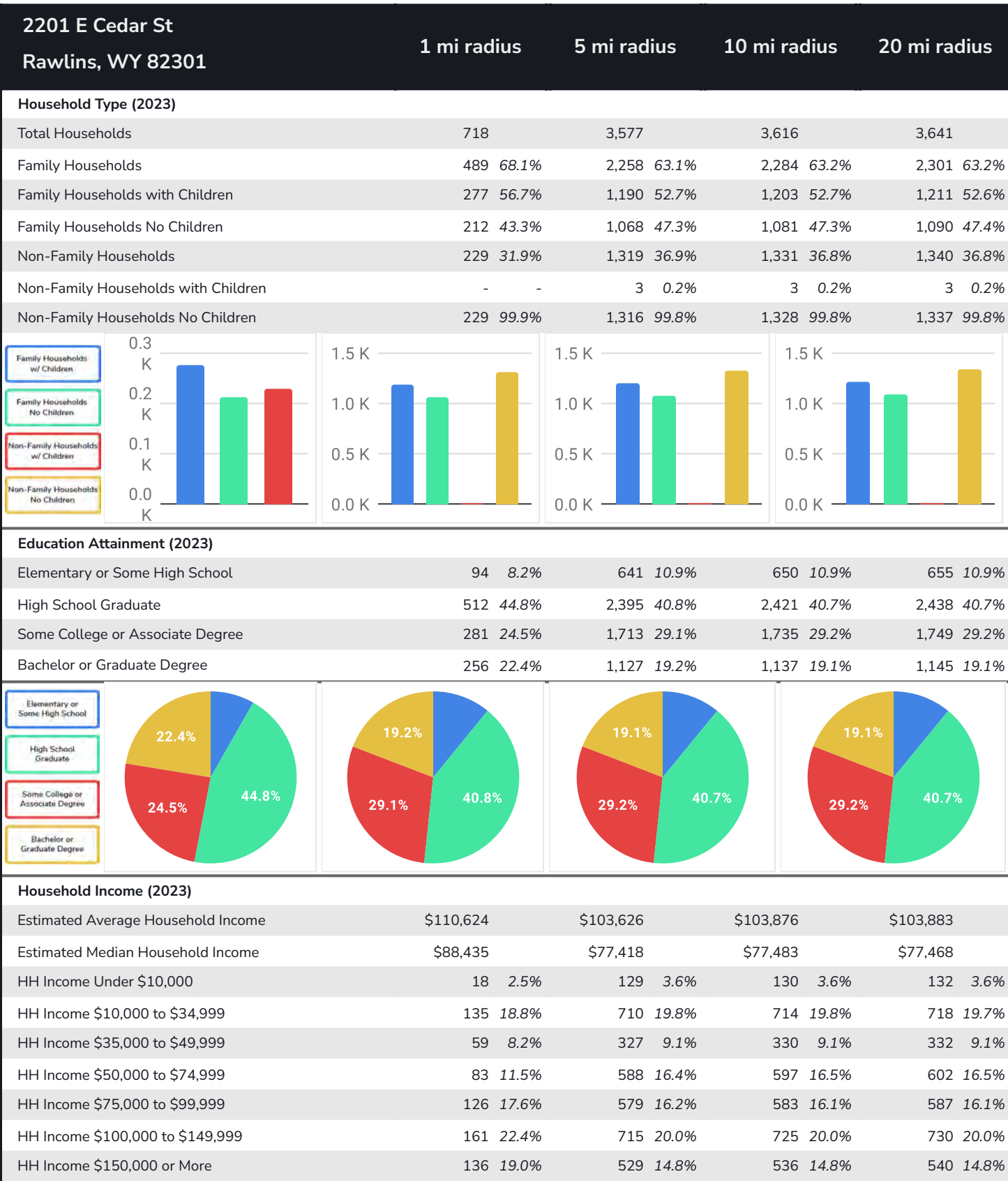
Lat/Lon: 41.7947/-107.2122



Graphic Profile

2010-2020 Census, 2023 Estimates with 2028 Projections
Calculated using Weighted Block Centroid from Block Groups

Lat/Lon: 41.7947/-107.2122



Expanded Profile

2010-2020 Census, 2023 Estimates with 2028 Projections
Calculated using Weighted Block Centroid from Block Groups

Lat/Lon: 41.7947/-107.2122

2201 E Cedar St Rawlins, WY 82301									
		1 mi radius		5 mi radius		10 mi radius		20 mi radius	
Population									
Estimated Population (2023)		1,831		8,908		8,998		9,060	
Projected Population (2028)		1,749		8,597		8,686		8,747	
Census Population (2020)		1,632		8,792		8,879		8,935	
Census Population (2010)		1,837		9,793		9,894		9,962	
Projected Annual Growth (2023 to 2028)		-82	-0.9%	-311	-0.7%	-313	-0.7%	-313	-0.7%
Historical Annual Growth (2020 to 2023)		199	4.1%	116	0.4%	119	0.4%	125	0.5%
Historical Annual Growth (2010 to 2020)		-204	-3.7%	-1,001	-3.4%	-1,016	-3.4%	-1,026	-3.4%
Estimated Population Density (2023)		583	psm	113	psm	29	psm	7	psm
Trade Area Size		3.1	sq mi	78.5	sq mi	314.0	sq mi	1,256.5	sq mi
Households									
Estimated Households (2023)		718		3,577		3,616		3,641	
Projected Households (2028)		650		3,265		3,300		3,325	
Census Households (2020)		634		3,505		3,542		3,565	
Census Households (2010)		696		3,832		3,872		3,898	
Estimated Households with Children (2023)		277	38.6%	1,193	33.4%	1,206	33.4%	1,214	33.3%
Estimated Average Household Size (2023)		2.55		2.42		2.42		2.42	
Average Household Income									
Estimated Average Household Income (2023)		\$110,624		\$103,626		\$103,876		\$103,883	
Projected Average Household Income (2028)		\$133,954		\$120,593		\$120,898		\$120,877	
Estimated Average Family Income (2023)		\$129,471		\$124,145		\$124,487		\$124,530	
Median Household Income									
Estimated Median Household Income (2023)		\$88,435		\$77,418		\$77,483		\$77,468	
Projected Median Household Income (2028)		\$84,469		\$72,448		\$72,546		\$72,543	
Estimated Median Family Income (2023)		\$103,155		\$95,417		\$95,372		\$95,298	
Per Capita Income									
Estimated Per Capita Income (2023)		\$43,363		\$42,076		\$42,202		\$42,216	
Projected Per Capita Income (2028)		\$49,766		\$46,275		\$46,418		\$46,425	
Estimated Per Capita Income 5 Year Growth		\$6,402	14.8%	\$4,199	10.0%	\$4,216	10.0%	\$4,209	10.0%
Estimated Average Household Net Worth (2023)		\$766,963		\$708,064		\$709,111		\$709,060	
Daytime Demos (2023)									
Total Businesses		112		362		364		364	
Total Employees		858		3,249		3,263		3,265	
Company Headquarter Businesses		4	3.7%	13	3.5%	13	3.5%	13	3.5%
Company Headquarter Employees		98	11.4%	280	8.6%	280	8.6%	280	8.6%
Employee Population per Business		7.6		9.0		9.0		9.0	
Residential Population per Business		16.3		24.6		24.7		24.9	

Expanded Profile

2010-2020 Census, 2023 Estimates with 2028 Projections

Calculated using Weighted Block Centroid from Block Groups

Lat/Lon: 41.7947/-107.2122

2201 E Cedar St

Rawlins, WY 82301

1 mi radius

5 mi radius

10 mi radius

20 mi radius

Race & Ethnicity

White (2023)	1,428	78.0%	6,894	77.4%	6,972	77.5%	7,023	77.5%
Black or African American (2023)	28	1.5%	343	3.9%	346	3.8%	350	3.9%
American Indian or Alaska Native (2023)	24	1.3%	104	1.2%	105	1.2%	106	1.2%
Asian (2023)	38	2.1%	120	1.3%	120	1.3%	120	1.3%
Hawaiian or Pacific Islander (2023)	1	-	9	0.1%	9	0.1%	9	-
Other Race (2023)	123	6.7%	612	6.9%	615	6.8%	617	6.8%
Two or More Races (2023)	188	10.3%	827	9.3%	832	9.2%	835	9.2%
Not Hispanic or Latino Population (2023)	1,351	73.8%	6,747	75.7%	6,825	75.9%	6,880	75.9%
Hispanic or Latino Population (2023)	480	26.2%	2,161	24.3%	2,173	24.1%	2,180	24.1%
Not Hispanic or Latino Population (2028)	1,286	73.5%	6,517	75.8%	6,594	75.9%	6,648	76.0%
Hispanic or Latino Population (2028)	463	26.5%	2,080	24.2%	2,091	24.1%	2,099	24.0%
Not Hispanic or Latino Population (2020)	1,192	73.0%	6,630	75.4%	6,708	75.5%	6,759	75.6%
Hispanic or Latino Population (2020)	440	27.0%	2,162	24.6%	2,171	24.5%	2,177	24.4%
Not Hispanic or Latino Population (2010)	1,399	76.2%	7,502	76.6%	7,596	76.8%	7,658	76.9%
Hispanic or Latino Population (2010)	438	23.8%	2,291	23.4%	2,298	23.2%	2,304	23.1%
Projected Hispanic Annual Growth (2023 to 2028)	-18	-0.7%	-81	-0.8%	-81	-0.7%	-81	-0.7%
Historic Hispanic Annual Growth (2010 to 2023)	43	0.7%	-130	-0.4%	-126	-0.4%	-124	-0.4%

Age Distribution (2023)

Age Under 5	144	7.9%	596	6.7%	599	6.7%	602	6.6%
Age 5 to 9 Years	155	8.5%	646	7.2%	650	7.2%	653	7.2%
Age 10 to 14 Years	143	7.8%	645	7.2%	650	7.2%	653	7.2%
Age 15 to 19 Years	122	6.6%	582	6.5%	587	6.5%	591	6.5%
Age 20 to 24 Years	123	6.7%	565	6.3%	569	6.3%	573	6.3%
Age 25 to 29 Years	130	7.1%	612	6.9%	617	6.9%	621	6.9%
Age 30 to 34 Years	149	8.1%	693	7.8%	699	7.8%	704	7.8%
Age 35 to 39 Years	159	8.7%	694	7.8%	703	7.8%	708	7.8%
Age 40 to 44 Years	115	6.3%	601	6.7%	608	6.8%	612	6.8%
Age 45 to 49 Years	91	5.0%	525	5.9%	532	5.9%	536	5.9%
Age 50 to 54 Years	78	4.2%	438	4.9%	444	4.9%	448	4.9%
Age 55 to 59 Years	96	5.3%	506	5.7%	512	5.7%	516	5.7%
Age 60 to 64 Years	111	6.1%	579	6.5%	586	6.5%	590	6.5%
Age 65 to 74 Years	146	8.0%	762	8.6%	773	8.6%	780	8.6%
Age 75 to 84 Years	52	2.8%	337	3.8%	341	3.8%	344	3.8%
Age 85 Years or Over	17	0.9%	128	1.4%	129	1.4%	129	1.4%
Median Age	32.4		35.1		35.2		35.2	

Gender Age Distribution (2023)

Female Population	888	48.5%	4,198	47.1%	4,240	47.1%	4,267	47.1%
Age 0 to 19 Years	275	30.9%	1,181	28.1%	1,190	28.1%	1,196	28.0%
Age 20 to 64 Years	503	56.7%	2,373	56.5%	2,399	56.6%	2,415	56.6%
Age 65 Years or Over	110	12.4%	644	15.3%	652	15.4%	657	15.4%
Female Median Age	32.7		35.7		35.7		35.8	
Male Population	943	51.5%	4,710	52.9%	4,758	52.9%	4,793	52.9%
Age 0 to 19 Years	290	30.7%	1,286	27.3%	1,296	27.2%	1,304	27.2%
Age 20 to 64 Years	548	58.2%	2,840	60.3%	2,871	60.3%	2,893	60.4%
Age 65 Years or Over	105	11.1%	583	12.4%	590	12.4%	596	12.4%
Male Median Age	32.2		34.8		34.9		34.9	

Expanded Profile

2010-2020 Census, 2023 Estimates with 2028 Projections

Calculated using Weighted Block Centroid from Block Groups

Lat/Lon: 41.7947/-107.2122

2201 E Cedar St

Rawlins, WY 82301

1 mi radius

5 mi radius

10 mi radius

20 mi radius

Household Income Distribution (2023)

HH Income \$200,000 or More	52	7.3%	249	7.0%	253	7.0%	254	7.0%
HH Income \$150,000 to \$199,999	84	11.7%	280	7.8%	284	7.8%	286	7.8%
HH Income \$100,000 to \$149,999	161	22.4%	715	20.0%	725	20.0%	730	20.0%
HH Income \$75,000 to \$99,999	126	17.6%	579	16.2%	583	16.1%	587	16.1%
HH Income \$50,000 to \$74,999	83	11.5%	588	16.4%	597	16.5%	602	16.5%
HH Income \$35,000 to \$49,999	59	8.2%	327	9.1%	330	9.1%	332	9.1%
HH Income \$25,000 to \$34,999	47	6.5%	259	7.2%	260	7.2%	262	7.2%
HH Income \$15,000 to \$24,999	50	7.0%	272	7.6%	273	7.6%	275	7.5%
HH Income Under \$15,000	56	7.8%	308	8.6%	311	8.6%	313	8.6%
HH Income \$35,000 or More	565	78.7%	2,739	76.6%	2,771	76.6%	2,792	76.7%
HH Income \$75,000 or More	424	59.0%	1,824	51.0%	1,845	51.0%	1,857	51.0%

Housing (2023)

Total Housing Units	900		4,596		4,661		4,703	
Housing Units Occupied	718	79.7%	3,577	77.8%	3,616	77.6%	3,641	77.4%
Housing Units Owner-Occupied	561	78.2%	2,607	72.9%	2,638	73.0%	2,658	73.0%
Housing Units, Renter-Occupied	157	21.8%	970	27.1%	978	27.0%	983	27.0%
Housing Units, Vacant	183	25.4%	1,019	28.5%	1,045	28.9%	1,062	29.2%

Marital Status (2023)

Never Married	392	28.2%	2,096	29.9%	2,106	29.7%	2,114	29.6%
Currently Married	814	58.7%	3,514	50.0%	3,571	50.3%	3,605	50.4%
Separated	43	3.1%	386	5.5%	386	5.4%	388	5.4%
Widowed	28	2.0%	220	3.1%	222	3.1%	224	3.1%
Divorced	110	7.9%	805	11.5%	814	11.5%	821	11.5%

Household Type (2023)

Population Family	1,539	84.1%	6,924	77.7%	6,997	77.8%	7,045	77.8%
Population Non-Family	292	15.9%	1,725	19.4%	1,740	19.3%	1,750	19.3%
Population Group Quarters	-	-	259	2.9%	261	2.9%	265	2.9%
Family Households	489	68.1%	2,258	63.1%	2,284	63.2%	2,301	63.2%
Non-Family Households	229	31.9%	1,319	36.9%	1,331	36.8%	1,340	36.8%
Married Couple with Children	184	22.6%	822	23.4%	833	23.3%	839	23.3%
Average Family Household Size	3.1		3.1		3.1		3.1	

Household Size (2023)

1 Person Households	191	26.6%	1,116	31.2%	1,127	31.2%	1,135	31.2%
2 Person Households	257	35.8%	1,266	35.4%	1,281	35.4%	1,291	35.5%
3 Person Households	114	15.9%	520	14.5%	526	14.5%	529	14.5%
4 Person Households	89	12.4%	380	10.6%	385	10.6%	387	10.6%
5 Person Households	44	6.1%	198	5.5%	199	5.5%	200	5.5%
6 or More Person Households	23	3.2%	97	2.7%	98	2.7%	98	2.7%

Household Vehicles (2023)

Households with 0 Vehicles Available	16	2.2%	140	3.9%	142	3.9%	143	3.9%
Households with 1 Vehicles Available	148	20.6%	813	22.7%	820	22.7%	825	22.7%
Households with 2 or More Vehicles Available	554	77.2%	2,624	73.4%	2,654	73.4%	2,673	73.4%
Total Vehicles Available	1,634		8,018		8,110		8,169	
Average Vehicles Per Household	2.3		2.2		2.2		2.2	

Expanded Profile

2010-2020 Census, 2023 Estimates with 2028 Projections
Calculated using Weighted Block Centroid from Block Groups

Lat/Lon: 41.7947/-107.2122

2201 E Cedar St

Rawlins, WY 82301

1 mi radius

5 mi radius

10 mi radius

20 mi radius

Labor Force (2023)

Estimated Labor Population Age 16 Years or Over	1,362		6,890		6,966		7,018	
Estimated Civilian Employed	787	57.8%	3,580	52.0%	3,624	52.0%	3,651	52.0%
Estimated Civilian Unemployed	53	3.9%	275	4.0%	275	3.9%	275	3.9%
Estimated in Armed Forces	-	-	-	-	-	-	-	-
Estimated Not in Labor Force	522	38.3%	3,035	44.1%	3,067	44.0%	3,091	44.0%
Unemployment Rate	3.9%		4.0%		3.9%		3.9%	

Occupation (2023)

Occupation: Population Age 16 Years or Over	787		3,580		3,624		3,651	
Management, Business, Financial Operations	99	12.6%	354	9.9%	362	10.0%	367	10.1%
Professional, Related	148	18.8%	601	16.8%	605	16.7%	608	16.7%
Service	132	16.7%	618	17.3%	625	17.2%	629	17.2%
Sales, Office	129	16.4%	697	19.5%	705	19.5%	709	19.4%
Farming, Fishing, Forestry	3	0.3%	21	0.6%	22	0.6%	22	0.6%
Construct, Extraction, Maintenance	128	16.3%	605	16.9%	611	16.9%	616	16.9%
Production, Transport Material Moving	148	18.9%	684	19.1%	694	19.1%	699	19.1%
White Collar Workers	376	47.8%	1,652	46.2%	1,673	46.1%	1,684	46.1%
Blue Collar Workers	411	52.2%	1,927	53.8%	1,952	53.9%	1,967	53.9%

Consumer Expenditure (2023)

Total Household Expenditure	\$54.12 M		\$259.12 M		\$262.37 M		\$264.23 M	
Total Non-Retail Expenditure	\$28.53 M	52.7%	\$136.61 M	52.7%	\$138.32 M	52.7%	\$139.3 M	52.7%
Total Retail Expenditure	\$25.59 M	47.3%	\$122.51 M	47.3%	\$124.05 M	47.3%	\$124.93 M	47.3%
Apparel	\$1.93 M	3.6%	\$9.11 M	3.5%	\$9.23 M	3.5%	\$9.29 M	3.5%
Contributions	\$1.79 M	3.3%	\$8.46 M	3.3%	\$8.56 M	3.3%	\$8.63 M	3.3%
Education	\$1.68 M	3.1%	\$7.72 M	3.0%	\$7.82 M	3.0%	\$7.87 M	3.0%
Entertainment	\$3.11 M	5.7%	\$14.71 M	5.7%	\$14.9 M	5.7%	\$15 M	5.7%
Food and Beverages	\$7.95 M	14.7%	\$38.16 M	14.7%	\$38.64 M	14.7%	\$38.91 M	14.7%
Furnishings and Equipment	\$1.93 M	3.6%	\$9.14 M	3.5%	\$9.25 M	3.5%	\$9.32 M	3.5%
Gifts	\$1.31 M	2.4%	\$6.35 M	2.4%	\$6.43 M	2.5%	\$6.47 M	2.5%
Health Care	\$4.52 M	8.3%	\$21.91 M	8.5%	\$22.19 M	8.5%	\$22.35 M	8.5%
Household Operations	\$2.13 M	3.9%	\$10.15 M	3.9%	\$10.28 M	3.9%	\$10.35 M	3.9%
Miscellaneous Expenses	\$1.02 M	1.9%	\$4.89 M	1.9%	\$4.96 M	1.9%	\$4.99 M	1.9%
Personal Care	\$727.69 K	1.3%	\$3.48 M	1.3%	\$3.52 M	1.3%	\$3.55 M	1.3%
Personal Insurance	\$391.6 K	0.7%	\$1.83 M	0.7%	\$1.85 M	0.7%	\$1.87 M	0.7%
Reading	\$117.86 K	0.2%	\$564.15 K	0.2%	\$571.27 K	0.2%	\$575.37 K	0.2%
Shelter	\$11.39 M	21.1%	\$54.64 M	21.1%	\$55.32 M	21.1%	\$55.71 M	21.1%
Tobacco	\$309.15 K	0.6%	\$1.56 M	0.6%	\$1.57 M	0.6%	\$1.59 M	0.6%
Transportation	\$9.91 M	18.3%	\$47.39 M	18.3%	\$47.98 M	18.3%	\$48.33 M	18.3%
Utilities	\$3.91 M	7.2%	\$19.05 M	7.4%	\$19.29 M	7.4%	\$19.42 M	7.4%

Educational Attainment (2023)

Adult Population Age 25 Years or Over	1,144		5,876		5,943		5,988	
Elementary (Grade Level 0 to 8)	20	1.7%	171	2.9%	172	2.9%	173	2.9%
Some High School (Grade Level 9 to 11)	74	6.5%	469	8.0%	478	8.0%	482	8.1%
High School Graduate	512	44.8%	2,395	40.8%	2,421	40.7%	2,438	40.7%
Some College	193	16.8%	1,250	21.3%	1,264	21.3%	1,274	21.3%
Associate Degree Only	88	7.7%	462	7.9%	470	7.9%	475	7.9%
Bachelor Degree Only	187	16.4%	827	14.1%	836	14.1%	842	14.1%
Graduate Degree	69	6.0%	300	5.1%	301	5.1%	303	5.1%

Expanded Profile

2010-2020 Census, 2023 Estimates with 2028 Projections

Calculated using Weighted Block Centroid from Block Groups

Lat/Lon: 41.7947/-107.2122

2201 E Cedar St									
Rawlins, WY 82301									
	1 mi radius			5 mi radius		10 mi radius		20 mi radius	
Units In Structure (2023)									
1 Detached Unit	491	70.5%		2,552	66.6%		2,588	66.8%	2,610 66.9%
1 Attached Unit	12	1.7%		54	1.4%		55	1.4%	55 1.4%
2 to 4 Units	37	5.3%		209	5.5%		209	5.4%	210 5.4%
5 to 9 Units	19	2.7%		155	4.0%		155	4.0%	155 4.0%
10 to 19 Units	-	-		8	0.2%		8	0.2%	8 0.2%
20 to 49 Units	24	3.4%		89	2.3%		89	2.3%	89 2.3%
50 or More Units	17	2.5%		67	1.8%		67	1.7%	67 1.7%
Mobile Home or Trailer	118	16.9%		442	11.5%		444	11.5%	447 11.5%
Other Structure	-	-	-	-	-	-	-	-	-
Homes Built By Year (2023)									
Homes Built 2010 or later	15	2.2%		65	1.7%		67	1.7%	68 1.8%
Homes Built 2000 to 2009	120	17.2%		333	8.7%		334	8.6%	335 8.6%
Homes Built 1990 to 1999	46	6.6%		196	5.1%		201	5.2%	203 5.2%
Homes Built 1980 to 1989	108	15.4%		320	8.3%		320	8.3%	321 8.2%
Homes Built 1970 to 1979	244	35.0%		781	20.4%		789	20.4%	795 20.4%
Homes Built 1960 to 1969	22	3.1%		205	5.3%		205	5.3%	206 5.3%
Homes Built 1950 to 1959	87	12.5%		731	19.1%		732	18.9%	733 18.8%
Homes Built Before 1949	77	11.0%		946	24.7%		968	25.0%	979 25.1%
Home Values (2023)									
Home Values \$1,000,000 or More	4	0.7%		16	0.6%		17	0.6%	17 0.6%
Home Values \$500,000 to \$999,999	9	1.7%		42	1.6%		44	1.7%	46 1.7%
Home Values \$400,000 to \$499,999	13	2.3%		109	4.2%		109	4.1%	109 4.1%
Home Values \$300,000 to \$399,999	75	13.4%		321	12.3%		326	12.4%	329 12.4%
Home Values \$200,000 to \$299,999	216	38.5%		801	30.7%		806	30.6%	810 30.5%
Home Values \$150,000 to \$199,999	79	14.2%		562	21.5%		567	21.5%	570 21.4%
Home Values \$100,000 to \$149,999	62	11.1%		450	17.3%		460	17.4%	465 17.5%
Home Values \$70,000 to \$99,999	28	5.1%		85	3.3%		86	3.3%	87 3.3%
Home Values \$50,000 to \$69,999	11	1.9%		41	1.6%		42	1.6%	43 1.6%
Home Values \$25,000 to \$49,999	6	1.0%		35	1.3%		35	1.3%	36 1.3%
Home Values Under \$25,000	57	10.2%		145	5.6%		146	5.5%	147 5.5%
Owner-Occupied Median Home Value	\$213,586			\$206,019			\$205,697		\$205,483
Renter-Occupied Median Rent	\$636			\$641			\$641		\$642
Transportation To Work (2023)									
Drive to Work Alone	670	85.2%		2,936	82.0%		2,975	82.1%	2,997 82.1%
Drive to Work in Carpool	72	9.2%		322	9.0%		322	8.9%	323 8.8%
Travel to Work by Public Transportation	-	-		2	-		2	-	2 -
Drive to Work on Motorcycle	-	-	-	-	-	-	-	-	-
Walk or Bicycle to Work	25	3.2%		105	2.9%		107	3.0%	108 3.0%
Other Means	4	0.6%		14	0.4%		14	0.4%	14 0.4%
Work at Home	15	1.9%		200	5.6%		204	5.6%	207 5.7%
Travel Time (2023)									
Travel to Work in 14 Minutes or Less	558	70.9%		2,518	70.3%		2,542	70.1%	2,555 70.0%
Travel to Work in 15 to 29 Minutes	165	20.9%		619	17.3%		633	17.5%	639 17.5%
Travel to Work in 30 to 59 Minutes	31	3.9%		162	4.5%		164	4.5%	167 4.6%
Travel to Work in 60 Minutes or More	19	2.4%		80	2.2%		81	2.2%	82 2.3%
Average Minutes Travel to Work	8.8			8.9			8.9		8.9