

COCCA DEVELOPMENT

RETAIL SPACE FOR LEASE

1210 ROCKINGHAM ROAD

ROCKINGHAM, NC 28379



- Nearly 58,000 sq. ft. plaza with Dreamworks Day Spa, Welcome Finance, Beltone, The Hive, & Wellspring Baptist Church
- Tractor Supply currently under construction for 24,181 sq. ft.
- Great location with high visibility and large ample parking lot
- Roughly 16,000+ cars pass on one side of the plaza and another 8,000+ daily along the other side street

AVAILABLE SUITE AREA—\$10 square foot NNN

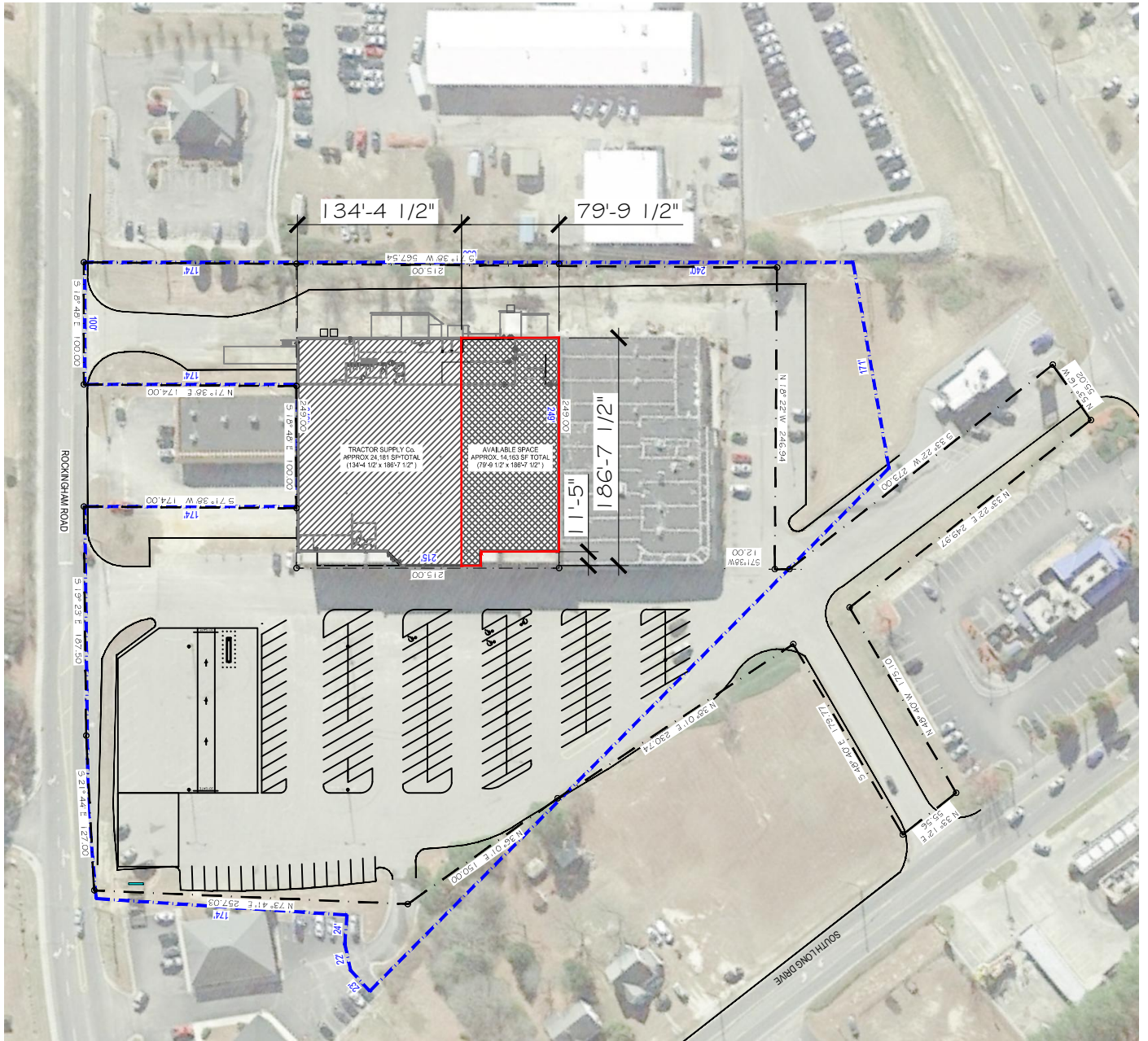
Approximately 14,163 square feet*

*Can be split per space needs

NNN: Base rent plus prorata share of Real Estate Taxes, Insurance, and Common Area expenses, including but not limited to snow removal, lawn care, and parking lot maintenance. Tenant pays separately metered utilities for gas, electric, water, sewer, & trash removal.

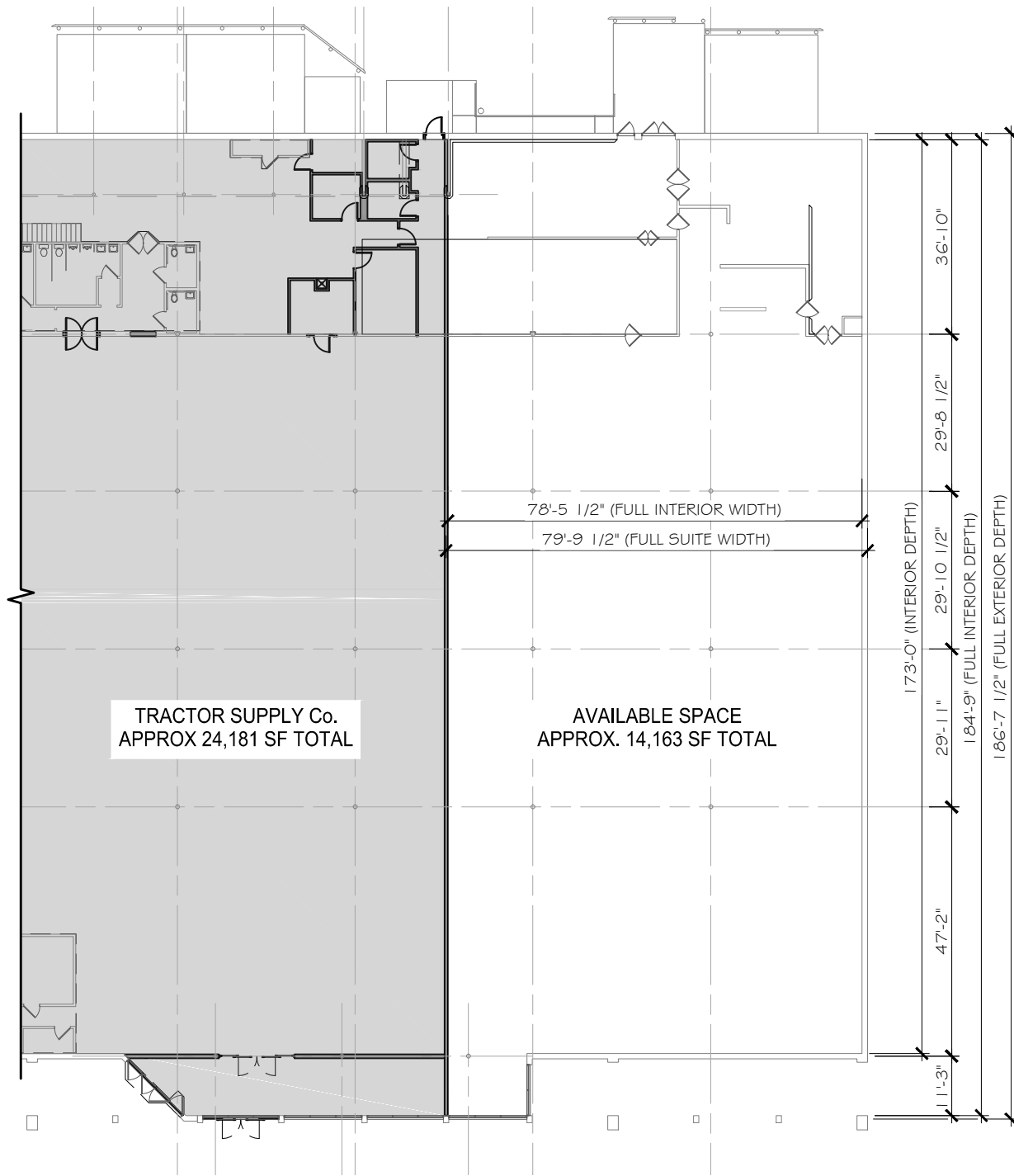
CALL 330-729-1010 FOR MORE INFORMATION

www.coccadevelopment.com



SITE PLAN

SCALE: 1/128" = 1'-0"



FLOOR PLAN

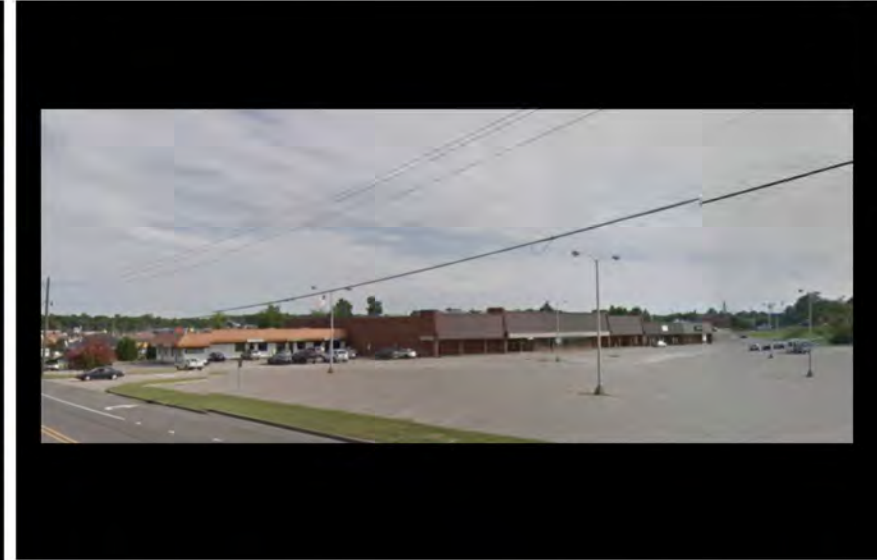
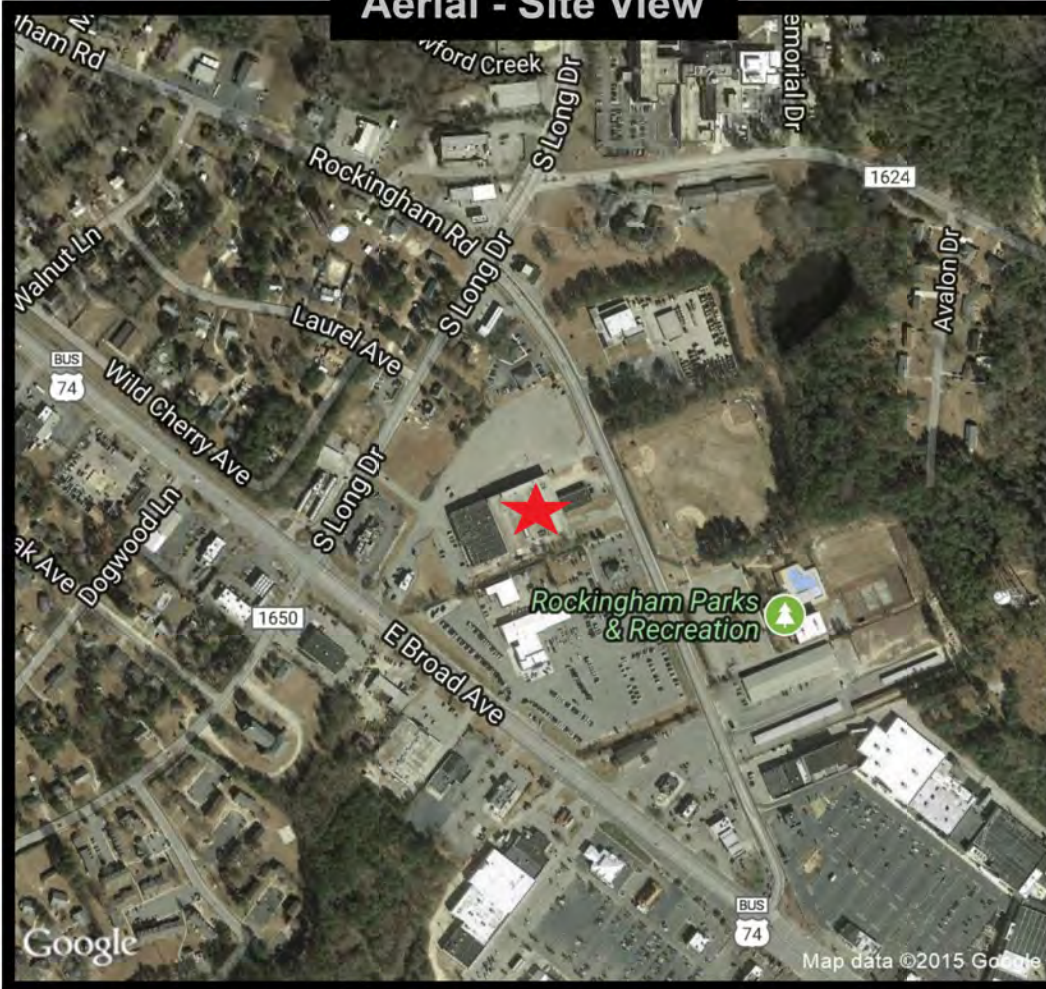
SCALE: 1" = 30'-0"

1210 Rockingham Road
 Rockingham, NC 28379

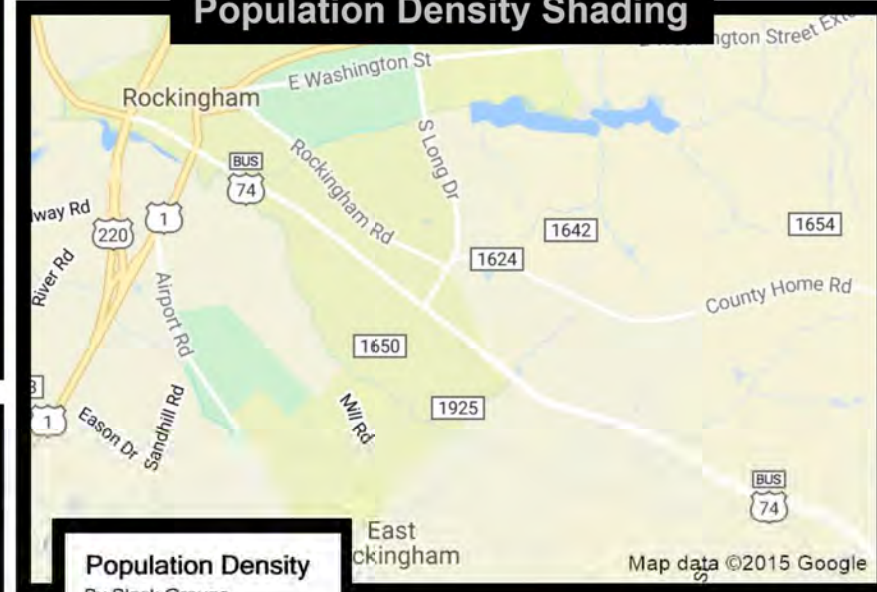
14,163 sq. ft. available for lease \$10/sq/ ft/ NNN

RETAIL SPACE FOR LEASE

Aerial - Site View



Population Density Shading



Demographic Data	1 mi radius	3 mi radius	5 mi radius
Population (2017)	3,573	17,616	31,751
Households (2017)	1,526	7,497	13,313
Median household income (2017)	\$23,981	\$34,761	\$37,349
Total Employees	2,191	6,755	10,952
Total Establishments	289	881	1,349

Cocca Development
(330) 729-1010

This map was produced using data from private and government sources deemed to be reliable. The information herein is provided without representation or warranty.

1210 Rockingham Road
Rockingham, NC 28379



FAMILY DOLLAR

Godfather's Pizza

SONIC

BURGER KING

Wendy's

Speedway

Arbys

DUNKIN' DONUTS

CVS pharmacy

Badcock & more

CAPTAIN D'S

DOLLAR GENERAL

LOWE'S

McDonald's

Pizza Inn

Kentucky Fried Chicken

Walgreens

BELTONE
DREAMWORKS DAY SPA
WELLSPRING BAPTIST CHURCH
THE HIVE
WELCOME FINANCE

TSC TRACTOR SUPPLY CO.

Domino's

Rockingham Parks & Recreation

belk

Save a lot

HIBBETT SPORTS

JCPenney

SHOE SHOW

Little Caesars Pizza

GNC LIVE WELL

Firestone

Wendy's

COCCA DEVELOPMENT, LTD

1210 Rockingham Road

Rockingham, NC 28379

AT A GLANCE

- ◆ Rockingham is a city in Richmond County named after the Marquis of Rockingham.
- ◆ It is the home to Rockingham Speedway, formerly the North Carolina Speedway, which was a staple of the NASCAR schedule for nearly 40 years before it was discontinued in 2004.
- ◆ In 1950, the town fielded a professional minor baseball team, the Rockingham Eagles, in the Class D Tobacco State League, which won the playoff title in their only season before disbanding.
- ◆ Leon Levine, founder of Family Dollar, Bucky Covington, country singer and finalist on the 5th season of American Idol, and Dannell Ellerbe, linebacker currently with the NFL Miami Dolphins and formerly with the Super Champion Baltimore Ravens are notable people born in Rockingham.

EXPANDED PROFILE

2000-2010 Census, 2017 Estimates with 2022 Projections

Calculated using Weighted Block Centroid from Block Groups

Lat/Lon: 34.9251/-79.7515

RF5

1210 Rockingham Road Rockingham, NC 28379	1 mi radius	3 mi radius	5 mi radius
Population			
Estimated Population (2017)	3,573	17,616	31,751
Projected Population (2022)	3,345	16,626	29,928
Census Population (2010)	3,780	18,459	32,992
Census Population (2000)	3,744	18,338	32,947
Projected Annual Growth (2017 to 2022)	-228 -1.3%	-990 -1.1%	-1,823 -1.1%
Historical Annual Growth (2010 to 2017)	-207 -0.8%	-843 -0.7%	-1,241 -0.5%
Historical Annual Growth (2000 to 2010)	36 0.1%	121 0.1%	45 -
Estimated Population Density (2017)	1,138 <i>psm</i>	623 <i>psm</i>	404 <i>psm</i>
Trade Area Size	3.14 <i>sq mi</i>	28.26 <i>sq mi</i>	78.51 <i>sq mi</i>
Households			
Estimated Households (2017)	1,526	7,497	13,313
Projected Households (2022)	1,540	7,646	13,561
Census Households (2010)	1,559	7,555	13,302
Census Households (2000)	1,506	7,340	13,003
Estimated Households with Children (2017)	498 32.6%	2,307 30.8%	4,174 31.4%
Estimated Average Household Size (2017)	2.25	2.31	2.34
Average Household Income			
Estimated Average Household Income (2017)	\$40,661	\$51,519	\$51,739
Projected Average Household Income (2022)	\$51,289	\$62,214	\$62,268
Estimated Average Family Income (2017)	\$53,310	\$62,069	\$59,508
Median Household Income			
Estimated Median Household Income (2017)	\$23,981	\$34,761	\$37,349
Projected Median Household Income (2022)	\$27,937	\$40,720	\$43,729
Estimated Median Family Income (2017)	\$31,423	\$44,810	\$45,765
Per Capita Income			
Estimated Per Capita Income (2017)	\$17,605	\$22,106	\$21,901
Projected Per Capita Income (2022)	\$23,864	\$28,800	\$28,436
Estimated Per Capita Income 5 Year Growth	\$6,259 35.6%	\$6,695 30.3%	\$6,535 29.8%
Estimated Average Household Net Worth (2017)	\$167,381	\$251,930	\$249,583
Daytime Demos (2017)			
Total Businesses	289	881	1,349
Total Employees	2,191	6,755	10,952
Company Headquarter Businesses	1 0.3%	1 0.1%	2 0.1%
Company Headquarter Employees	39 1.8%	70 1.0%	207 1.9%
Employee Population per Business	7.6	7.7	8.1
Residential Population per Business	12.4	20.0	23.5

This report was produced using data from private and government sources deemed to be reliable. The information herein is provided without representation or warranty.

EXPANDED PROFILE

2000-2010 Census, 2017 Estimates with 2022 Projections

Calculated using Weighted Block Centroid from Block Groups

Lat/Lon: 34.9251/-79.7515

RF5

1210 Rockingham Road

Rockingham, NC 28379

Race & Ethnicity

	1 mi radius		3 mi radius		5 mi radius	
White (2017)	1,716	48.0%	10,412	59.1%	18,817	59.3%
Black or African American (2017)	1,386	38.8%	5,357	30.4%	10,077	31.7%
American Indian or Alaska Native (2017)	74	2.1%	320	1.8%	563	1.8%
Asian (2017)	64	1.8%	273	1.5%	373	1.2%
Hawaiian or Pacific Islander (2017)	1	-	6	-	16	0.1%
Other Race (2017)	252	7.1%	855	4.9%	1,172	3.7%
Two or More Races (2017)	80	2.2%	394	2.2%	733	2.3%
Not Hispanic or Latino Population (2017)	3,193	89.4%	16,357	92.9%	30,008	94.5%
Hispanic or Latino Population (2017)	380	10.6%	1,259	7.1%	1,743	5.5%
Not Hispanic or Latino Population (2022)	2,965	88.6%	15,363	92.4%	28,180	94.2%
Hispanic or Latino Population (2022)	381	11.4%	1,263	7.6%	1,748	5.8%
Not Hispanic or Latino Population (2010)	3,378	89.4%	17,173	93.0%	31,220	94.6%
Hispanic or Latino Population (2010)	402	10.6%	1,286	7.0%	1,771	5.4%
Not Hispanic or Latino Population (2000)	3,593	96.0%	17,830	97.2%	32,197	97.7%
Hispanic or Latino Population (2000)	150	4.0%	509	2.8%	750	2.3%
Projected Hispanic Annual Growth (2017 to 2022)	1	0.1%	4	0.1%	5	0.1%
Historic Hispanic Annual Growth (2000 to 2017)	229	9.0%	750	8.7%	993	7.8%

Age Distribution (2017)

Age Under 5	281	7.9%	1,085	6.2%	1,936	6.1%
Age 5 to 9 Years	254	7.1%	1,177	6.7%	2,062	6.5%
Age 10 to 14 Years	222	6.2%	1,148	6.5%	2,062	6.5%
Age 15 to 19 Years	222	6.2%	1,117	6.3%	2,008	6.3%
Age 20 to 24 Years	276	7.7%	1,103	6.3%	2,011	6.3%
Age 25 to 29 Years	263	7.4%	1,190	6.8%	2,148	6.8%
Age 30 to 34 Years	206	5.8%	1,023	5.8%	1,762	5.5%
Age 35 to 39 Years	210	5.9%	1,017	5.8%	1,830	5.8%
Age 40 to 44 Years	199	5.6%	1,064	6.0%	1,887	5.9%
Age 45 to 49 Years	205	5.7%	1,088	6.2%	2,021	6.4%
Age 50 to 54 Years	192	5.4%	1,148	6.5%	2,098	6.6%
Age 55 to 59 Years	237	6.6%	1,236	7.0%	2,217	7.0%
Age 60 to 64 Years	200	5.6%	1,123	6.4%	2,099	6.6%
Age 65 to 74 Years	305	8.5%	1,716	9.7%	3,256	10.3%
Age 75 to 84 Years	213	6.0%	1,002	5.7%	1,702	5.4%
Age 85 Years or Over	90	2.5%	378	2.1%	653	2.1%
Median Age	35.9		38.8		39.1	

Gender Age Distribution (2017)

Female Population	1,955	54.7%	9,354	53.1%	16,725	52.7%
Age 0 to 19 Years	470	24.0%	2,197	23.5%	3,916	23.4%
Age 20 to 64 Years	1,091	55.8%	5,254	56.2%	9,442	56.5%
Age 65 Years or Over	394	20.1%	1,903	20.3%	3,367	20.1%
Female Median Age	38.5		41.1		41.1	
Male Population	1,618	45.3%	8,262	46.9%	15,026	47.3%
Age 0 to 19 Years	508	31.4%	2,330	28.2%	4,152	27.6%
Age 20 to 64 Years	896	55.4%	4,738	57.3%	8,630	57.4%
Age 65 Years or Over	213	13.2%	1,194	14.5%	2,244	14.9%
Male Median Age	32.9		36.3		36.9	

This report was produced using data from private and government sources deemed to be reliable. The information herein is provided without representation or warranty.

EXPANDED PROFILE

2000-2010 Census, 2017 Estimates with 2022 Projections

Calculated using Weighted Block Centroid from Block Groups

Lat/Lon: 34.9251/-79.7515

RF5

1210 Rockingham Road Rockingham, NC 28379	1 mi radius		3 mi radius		5 mi radius	
Household Income Distribution (2017)						
HH Income \$200,000 or More	10	0.7%	131	1.7%	200	1.5%
HH Income \$150,000 to \$199,999	13	0.8%	137	1.8%	239	1.8%
HH Income \$100,000 to \$149,999	41	2.7%	519	6.9%	975	7.3%
HH Income \$75,000 to \$99,999	77	5.0%	619	8.3%	1,212	9.1%
HH Income \$50,000 to \$74,999	215	14.1%	1,108	14.8%	2,049	15.4%
HH Income \$35,000 to \$49,999	183	12.0%	1,042	13.9%	2,068	15.5%
HH Income \$25,000 to \$34,999	195	12.8%	1,015	13.5%	1,723	12.9%
HH Income \$15,000 to \$24,999	361	23.7%	1,150	15.3%	2,101	15.8%
HH Income Under \$15,000	432	28.3%	1,777	23.7%	2,745	20.6%
HH Income \$35,000 or More	538	35.3%	3,556	47.4%	6,744	50.7%
HH Income \$75,000 or More	141	9.2%	1,406	18.8%	2,627	19.7%
Housing (2017)						
Total Housing Units	1,741		8,542		15,241	
Housing Units Occupied	1,526	87.7%	7,497	87.8%	13,313	87.4%
Housing Units Owner-Occupied	600	39.3%	4,363	58.2%	8,299	62.3%
Housing Units, Renter-Occupied	926	60.7%	3,133	41.8%	5,014	37.7%
Housing Units, Vacant	214	12.3%	1,045	12.2%	1,928	12.6%
Marital Status (2017)						
Never Married	1,109	39.4%	5,045	35.5%	8,866	34.5%
Currently Married	889	31.6%	5,404	38.0%	9,956	38.8%
Separated	264	9.4%	769	5.4%	1,343	5.2%
Widowed	275	9.8%	1,443	10.2%	2,422	9.4%
Divorced	280	9.9%	1,545	10.9%	3,104	12.1%
Household Type (2017)						
Population Family	2,716	76.0%	14,068	79.9%	25,650	80.8%
Population Non-Family	716	20.0%	3,216	18.3%	5,461	17.2%
Population Group Quarters	141	3.9%	331	1.9%	640	2.0%
Family Households	894	58.6%	4,687	62.5%	8,552	64.2%
Non-Family Households	632	41.4%	2,810	37.5%	4,760	35.8%
Married Couple with Children	159	17.9%	1,067	19.7%	2,016	20.3%
Average Family Household Size	3.0		3.0		3.0	
Household Size (2017)						
1 Person Households	561	36.7%	2,494	33.3%	4,224	31.7%
2 Person Households	452	29.6%	2,415	32.2%	4,375	32.9%
3 Person Households	236	15.5%	1,162	15.5%	2,107	15.8%
4 Person Households	157	10.3%	823	11.0%	1,523	11.4%
5 Person Households	73	4.8%	370	4.9%	671	5.0%
6 or More Person Households	47	3.1%	233	3.1%	413	3.1%
Household Vehicles (2017)						
Households with 0 Vehicles Available	232	15.2%	769	10.3%	1,283	9.6%
Households with 1 Vehicles Available	640	42.0%	2,918	38.9%	5,051	37.9%
Households with 2 or More Vehicles Available	654	42.8%	3,810	50.8%	6,979	52.4%
Total Vehicles Available	2,196		12,639		23,193	
Average Vehicles Per Household	1.4		1.7		1.7	

This report was produced using data from private and government sources deemed to be reliable. The information herein is provided without representation or warranty.

EXPANDED PROFILE

2000-2010 Census, 2017 Estimates with 2022 Projections

Calculated using Weighted Block Centroid from Block Groups

Lat/Lon: 34.9251/-79.7515

RF5

1210 Rockingham Road

Rockingham, NC 28379

Labor Force (2017)

	1 mi radius		3 mi radius		5 mi radius	
Estimated Labor Population Age 16 Years or Over	2,780		13,990		25,313	
Estimated Civilian Employed	1,351	48.6%	7,142	51.0%	12,693	50.1%
Estimated Civilian Unemployed	123	4.4%	491	3.5%	877	3.5%
Estimated in Armed Forces	-	-	-	-	7	-
Estimated Not in Labor Force	1,306	47.0%	6,357	45.4%	11,736	46.4%
Unemployment Rate	4.4%		3.5%		3.5%	

Occupation (2015)

	1 mi radius		3 mi radius		5 mi radius	
Occupation: Population Age 16 Years or Over	1,368		7,150		12,701	
Management, Business, Financial Operations	142	10.4%	759	10.6%	1,227	9.7%
Professional, Related	290	21.2%	1,371	19.2%	2,227	17.5%
Service	202	14.8%	1,230	17.2%	2,305	18.2%
Sales, Office	251	18.3%	1,511	21.1%	2,849	22.4%
Farming, Fishing, Forestry	67	4.9%	145	2.0%	199	1.6%
Construct, Extraction, Maintenance	169	12.3%	795	11.1%	1,311	10.3%
Production, Transport Material Moving	247	18.1%	1,340	18.7%	2,583	20.3%
White Collar Workers	683	49.9%	3,641	50.9%	6,303	49.6%
Blue Collar Workers	685	50.1%	3,509	49.1%	6,398	50.4%

Consumer Expenditure (2017)

	1 mi radius		3 mi radius		5 mi radius	
Total Household Expenditure	\$58.4 M		\$333 M		\$594 M	
Total Non-Retail Expenditure	\$30.1 M	51.6%	\$172 M	51.6%	\$306 M	51.5%
Total Retail Expenditure	\$28.2 M	48.4%	\$161 M	48.4%	\$288 M	48.5%
Apparel	\$2.02 M	3.5%	\$11.5 M	3.5%	\$20.5 M	3.5%
Contributions	\$2.12 M	3.6%	\$12.9 M	3.9%	\$23.0 M	3.9%
Education	\$1.88 M	3.2%	\$11.1 M	3.3%	\$19.5 M	3.3%
Entertainment	\$3.15 M	5.4%	\$18.3 M	5.5%	\$32.6 M	5.5%
Food and Beverages	\$8.99 M	15.4%	\$50.4 M	15.1%	\$89.7 M	15.1%
Furnishings and Equipment	\$1.81 M	3.1%	\$10.8 M	3.2%	\$19.3 M	3.3%
Gifts	\$1.26 M	2.2%	\$7.56 M	2.3%	\$13.4 M	2.3%
Health Care	\$5.13 M	8.8%	\$28.4 M	8.5%	\$50.5 M	8.5%
Household Operations	\$1.46 M	2.5%	\$8.72 M	2.6%	\$15.5 M	2.6%
Miscellaneous Expenses	\$896 K	1.5%	\$5.04 M	1.5%	\$8.98 M	1.5%
Personal Care	\$765 K	1.3%	\$4.34 M	1.3%	\$7.73 M	1.3%
Personal Insurance	\$375 K	0.6%	\$2.25 M	0.7%	\$4.01 M	0.7%
Reading	\$128 K	0.2%	\$733 K	0.2%	\$1.30 M	0.2%
Shelter	\$12.1 M	20.7%	\$69.0 M	20.7%	\$123 M	20.7%
Tobacco	\$445 K	0.8%	\$2.36 M	0.7%	\$4.19 M	0.7%
Transportation	\$11.0 M	18.9%	\$63.3 M	19.0%	\$113 M	19.1%
Utilities	\$4.84 M	8.3%	\$26.5 M	8.0%	\$47.2 M	7.9%

Educational Attainment (2017)

	1 mi radius		3 mi radius		5 mi radius	
Adult Population Age 25 Years or Over	2,319		11,986		21,672	
Elementary (Grade Level 0 to 8)	225	9.7%	732	6.1%	1,158	5.3%
Some High School (Grade Level 9 to 11)	348	15.0%	1,408	11.8%	2,379	11.0%
High School Graduate	789	34.0%	4,205	35.1%	8,034	37.1%
Some College	411	17.7%	2,509	20.9%	4,599	21.2%
Associate Degree Only	257	11.1%	1,259	10.5%	2,382	11.0%
Bachelor Degree Only	239	10.3%	1,311	10.9%	2,158	10.0%
Graduate Degree	50	2.2%	562	4.7%	962	4.4%

This report was produced using data from private and government sources deemed to be reliable. The information herein is provided without representation or warranty.

EXPANDED PROFILE

2000-2010 Census, 2017 Estimates with 2022 Projections

Calculated using Weighted Block Centroid from Block Groups

Lat/Lon: 34.9251/-79.7515

RF5

1210 Rockingham Road

Rockingham, NC 28379

Units In Structure (2015)

	1 mi radius		3 mi radius		5 mi radius	
1 Detached Unit	777	49.8%	5,312	70.3%	9,571	72.0%
1 Attached Unit	27	1.7%	56	0.7%	120	0.9%
2 to 4 Units	188	12.0%	613	8.1%	906	6.8%
5 to 9 Units	202	12.9%	303	4.0%	368	2.8%
10 to 19 Units	53	3.4%	65	0.9%	65	0.5%
20 to 49 Units	31	2.0%	63	0.8%	97	0.7%
50 or More Units	8	0.5%	19	0.3%	19	0.1%
Mobile Home or Trailer	259	16.6%	1,074	14.2%	2,168	16.3%
Other Structure	-	-	-	-	-	-

Homes Built By Year (2015)

Homes Built 2010 or later	-	-	-	-	-	-
Homes Built 2000 to 2009	187	12.0%	602	8.0%	1,056	7.9%
Homes Built 1990 to 1999	137	8.8%	675	8.9%	1,642	12.3%
Homes Built 1980 to 1989	262	16.8%	1,085	14.4%	1,945	14.6%
Homes Built 1970 to 1979	316	20.3%	1,460	19.3%	2,590	19.5%
Homes Built 1960 to 1969	243	15.6%	1,334	17.7%	2,083	15.7%
Homes Built 1950 to 1959	191	12.2%	1,114	14.7%	1,884	14.2%
Homes Built Before 1949	204	13.1%	1,189	15.7%	2,020	15.2%

Home Values (2015)

Home Values \$1,000,000 or More	-	-	19	0.4%	20	0.2%
Home Values \$500,000 to \$999,999	2	0.4%	45	1.0%	102	1.2%
Home Values \$400,000 to \$499,999	2	0.4%	34	0.8%	82	1.0%
Home Values \$300,000 to \$399,999	15	2.4%	94	2.2%	177	2.1%
Home Values \$200,000 to \$299,999	9	1.5%	132	3.0%	436	5.3%
Home Values \$150,000 to \$199,999	25	4.0%	404	9.2%	684	8.3%
Home Values \$100,000 to \$149,999	120	19.6%	885	20.2%	1,565	18.9%
Home Values \$70,000 to \$99,999	149	24.4%	1,075	24.5%	1,950	23.5%
Home Values \$50,000 to \$69,999	94	15.3%	670	15.3%	1,430	17.3%
Home Values \$25,000 to \$49,999	109	17.8%	714	16.3%	1,230	14.8%
Home Values Under \$25,000	77	12.6%	282	6.4%	603	7.3%
Owner-Occupied Median Home Value	\$74,924		\$85,682		\$84,482	
Renter-Occupied Median Rent	\$423		\$432		\$418	

Transportation To Work (2015)

Drive to Work Alone	1,192	84.6%	5,755	83.3%	10,139	81.4%
Drive to Work in Carpool	167	11.9%	883	12.8%	1,783	14.3%
Travel to Work by Public Transportation	-	-	-	-	45	0.4%
Drive to Work on Motorcycle	-	-	-	-	-	-
Walk or Bicycle to Work	36	2.5%	164	2.4%	300	2.4%
Other Means	-	-	27	0.4%	72	0.6%
Work at Home	14	1.0%	79	1.1%	120	1.0%

Travel Time (2015)

Travel to Work in 14 Minutes or Less	741	53.1%	3,683	53.9%	5,714	46.3%
Travel to Work in 15 to 29 Minutes	382	27.4%	1,763	25.8%	3,763	30.5%
Travel to Work in 30 to 59 Minutes	205	14.7%	1,372	20.1%	2,564	20.8%
Travel to Work in 60 Minutes or More	22	1.6%	242	3.5%	531	4.3%
Average Minutes Travel to Work	13.4		14.2		15.4	

This report was produced using data from private and government sources deemed to be reliable. The information herein is provided without representation or warranty.

GRAPHIC PROFILE

2000-2010 Census, 2017 Estimates with 2022 Projections

Calculated using Weighted Block Centroid from Block Groups

Lat/Lon: 34.9251/-79.7515

RGRAP3

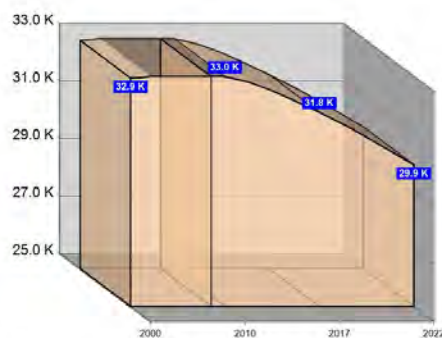
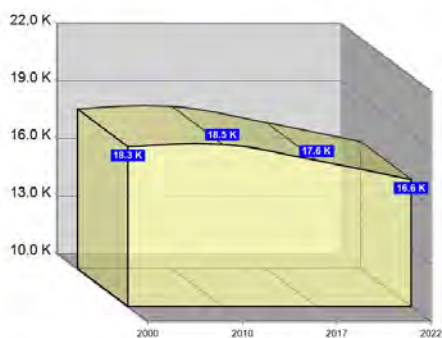
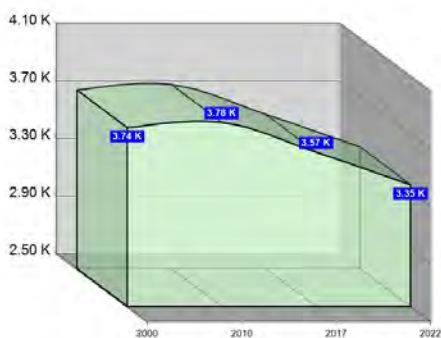
1210 Rockingham Road

Rockingham, NC 28379

1 mi radius 3 mi radius 5 mi radius

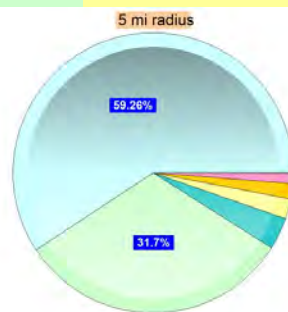
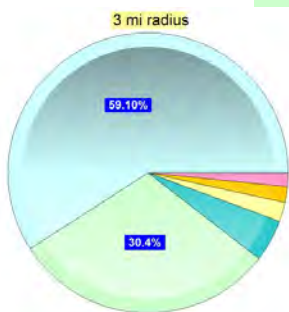
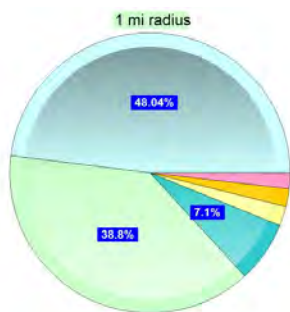
Population

Estimated Population (2017)	3,573	17,616	31,751
Projected Population (2022)	3,345	16,626	29,928
Census Population (2010)	3,780	18,459	32,992
Census Population (2000)	3,744	18,338	32,947
Projected Annual Growth (2017-2022)	-228 -1.3%	-990 -1.1%	-1,823 -1.1%
Historical Annual Growth (2010-2017)	-207 0.1%	-843 0.1%	-1,241 -
Historical Annual Growth (2000-2010)	36 0.1%	121 0.1%	45 -
Estimated Population Density (2017)	1,138 <i>psm</i>	623 <i>psm</i>	404 <i>psm</i>
Trade Area Size	3.1 <i>sq mi</i>	28.3 <i>sq mi</i>	78.5 <i>sq mi</i>



Race and Ethnicity (2017)

Not Hispanic or Latino Population	3,193 89.4%	16,357 92.9%	30,008 94.5%
White	1,634 51.2%	10,130 61.9%	18,397 61.3%
Black or African American	1,370 42.9%	5,312 32.5%	9,999 33.3%
American Indian or Alaska Native	56 1.7%	275 1.7%	505 1.7%
Asian	62 1.9%	271 1.7%	370 1.2%
Hawaiian or Pacific Islander	- -	3 -	11 -
Other Race	9 0.3%	42 0.3%	91 0.3%
Two or More Races	62 1.9%	325 2.0%	636 2.1%
Hispanic or Latino Population	380 10.6%	1,259 7.1%	1,743 5.5%
White	82 21.6%	282 22.4%	420 24.1%
Black or African American	15 4.0%	46 3.6%	78 4.5%
American Indian or Alaska Native	18 4.8%	45 3.6%	59 3.4%
Asian	2 0.5%	2 0.2%	3 0.2%
Hispanic Hawaiian or Pacific Islander	1 0.1%	3 0.2%	6 0.3%
Other Race	243 64.1%	813 64.6%	1,081 62.0%
Two or More Races	18 4.8%	68 5.4%	98 5.6%



White Black or African American American Indian or Alaska Native Asian Hawaiian or Pacific Islander Other Race 2+ Races

This report was produced using data from private and government sources deemed to be reliable. The information herein is provided without representation or warranty.

GRAPHIC PROFILE

2000-2010 Census, 2017 Estimates with 2022 Projections

Calculated using Weighted Block Centroid from Block Groups

Lat/Lon: 34.9251/-79.7515

RGRAP3

1210 Rockingham Road

Rockingham, NC 28379

1 mi radius

3 mi radius

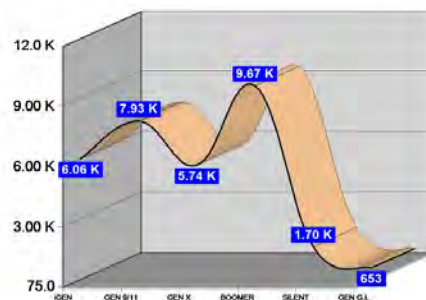
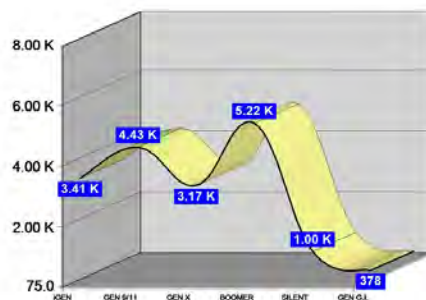
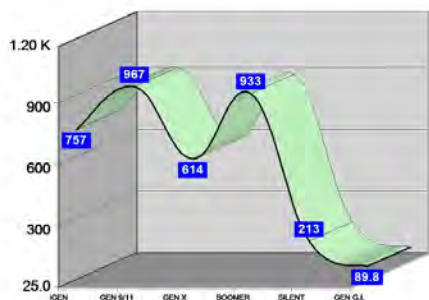
5 mi radius

Age Distribution (2017)

	1 mi radius	3 mi radius	5 mi radius
Age Under 5 Years	281 7.9%	1,085 6.2%	1,936 6.1%
Age 5 to 9 Years	254 7.1%	1,177 6.7%	2,062 6.5%
Age 10 to 14 Years	222 6.2%	1,148 6.5%	2,062 6.5%
Age 15 to 19 Years	222 6.2%	1,117 6.3%	2,008 6.3%
Age 20 to 24 Years	276 7.7%	1,103 6.3%	2,011 6.3%
Age 25 to 29 Years	263 7.4%	1,190 6.8%	2,148 6.8%
Age 30 to 34 Years	206 5.8%	1,023 5.8%	1,762 5.5%
Age 35 to 39 Years	210 5.9%	1,017 5.8%	1,830 5.8%
Age 40 to 44 Years	199 5.6%	1,064 6.0%	1,887 5.9%
Age 45 to 49 Years	205 5.7%	1,088 6.2%	2,021 6.4%
Age 50 to 54 Years	192 5.4%	1,148 6.5%	2,098 6.6%
Age 55 to 59 Years	237 6.6%	1,236 7.0%	2,217 7.0%
Age 60 to 64 Years	200 5.6%	1,123 6.4%	2,099 6.6%
Age 65 to 69 Years	161 4.5%	949 5.4%	1,822 5.7%
Age 70 to 74 Years	144 4.0%	768 4.4%	1,433 4.5%
Age 75 to 79 Years	121 3.4%	596 3.4%	1,037 3.3%
Age 80 to 84 Years	91 2.6%	407 2.3%	665 2.1%
Age 85 Years or Over	90 2.5%	378 2.1%	653 2.1%
Median Age	35.9	38.8	39.1

Generation (2017)

	1 mi radius	3 mi radius	5 mi radius
iGeneration (Age Under 15 Years)	757 21.2%	3,410 19.4%	6,060 19.1%
Generation 9/11 Millennials (Age 15 to 34 Years)	967 27.1%	4,434 25.2%	7,928 25.0%
Gen Xers (Age 35 to 49 Years)	614 17.2%	3,169 18.0%	5,737 18.1%
Baby Boomers (Age 50 to 74 Years)	933 26.1%	5,223 29.6%	9,670 30.5%
Silent Generation (Age 75 to 84 Years)	213 6.0%	1,002 5.7%	1,702 5.4%
G.I. Generation (Age 85 Years or Over)	90 2.5%	378 2.1%	653 2.1%



This report was produced using data from private and government sources deemed to be reliable. The information herein is provided without representation or warranty.

GRAPHIC PROFILE

2000-2010 Census, 2017 Estimates with 2022 Projections

Calculated using Weighted Block Centroid from Block Groups

Lat/Lon: 34.9251/-79.7515

RGRAP3

1210 Rockingham Road

Rockingham, NC 28379

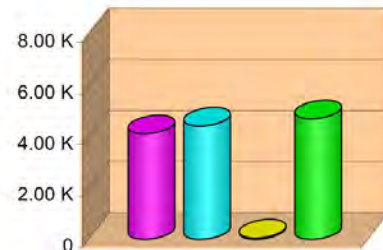
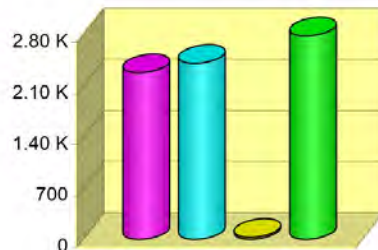
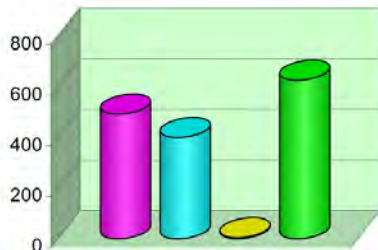
1 mi radius

3 mi radius

5 mi radius

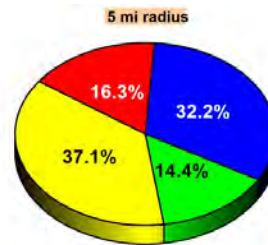
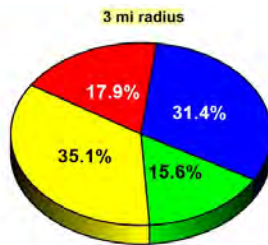
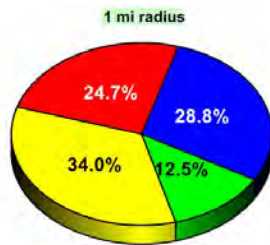
Household Type (2017)

	1 mi radius	3 mi radius	5 mi radius
Total Households	1,526	7,497	13,313
Family Households	894 26.3%	4,687 32.1%	8,552 33.3%
Family Households with Children	493 55.2%	2,280 48.6%	4,125 48.2%
Family Households No Children	401 44.8%	2,408 51.4%	4,427 51.8%
Non-Family Households	632 26.3%	2,810 32.1%	4,760 33.3%
Non-Family Households with Children	4 0.7%	27 1.0%	49 1.0%
Non-Family Households No Children	628 99.3%	2,783 99.0%	4,711 99.0%



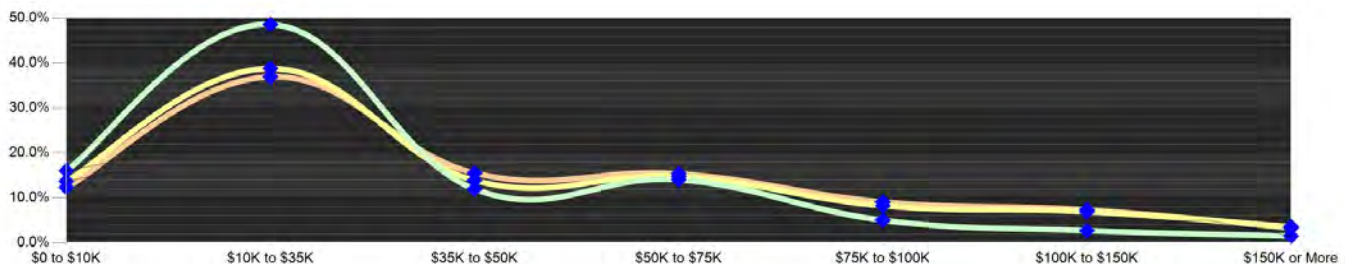
Education Attainment (2017)

	1 mi radius	3 mi radius	5 mi radius
Elementary or Some High School	573 24.7%	2,140 17.9%	3,537 16.3%
High School Graduate	789 34.0%	4,205 35.1%	8,034 37.1%
Some College or Associate Degree	668 28.8%	3,768 31.4%	6,982 32.2%
Bachelor or Graduate Degree	289 12.5%	1,873 15.6%	3,120 14.4%



Household Income (2017)

	1 mi radius	3 mi radius	5 mi radius
Estimated Average Household Income	\$40,661	\$51,519	\$51,739
Estimated Median Household Income	\$23,981	\$34,761	\$37,349
HH Income Under \$10,000	245 16.1%	1,030 13.7%	1,644 12.3%
HH Income \$10,000 to \$34,999	742 48.6%	2,911 38.8%	4,925 37.0%
HH Income \$35,000 to \$49,999	183 12.0%	1,042 13.9%	2,068 15.5%
HH Income \$50,000 to \$74,999	215 14.1%	1,108 14.8%	2,049 15.4%
HH Income \$75,000 to \$99,999	41 2.7%	519 6.9%	975 7.3%
HH Income \$100,000 to \$149,999	41 2.7%	519 6.9%	975 7.3%
HH Income \$150,000 or More	23 1.5%	268 3.6%	440 3.3%



This report was produced using data from private and government sources deemed to be reliable. The information herein is provided without representation or warranty.