

COCCA DEVELOPMENT

RETAIL SPACE FOR LEASE

619 MAIN STREET

RIMERSBURG, PA 16248



- Former Dollar General located at busy intersection of Main Street and East Broad Street, next to Northwest Savings Bank and across from Clarion County Savings Bank
- Great location with high visibility; roughly 6,000+ cars pass in front of the site daily
- This site was a high traffic/high sales location for Dollar General which they outgrew

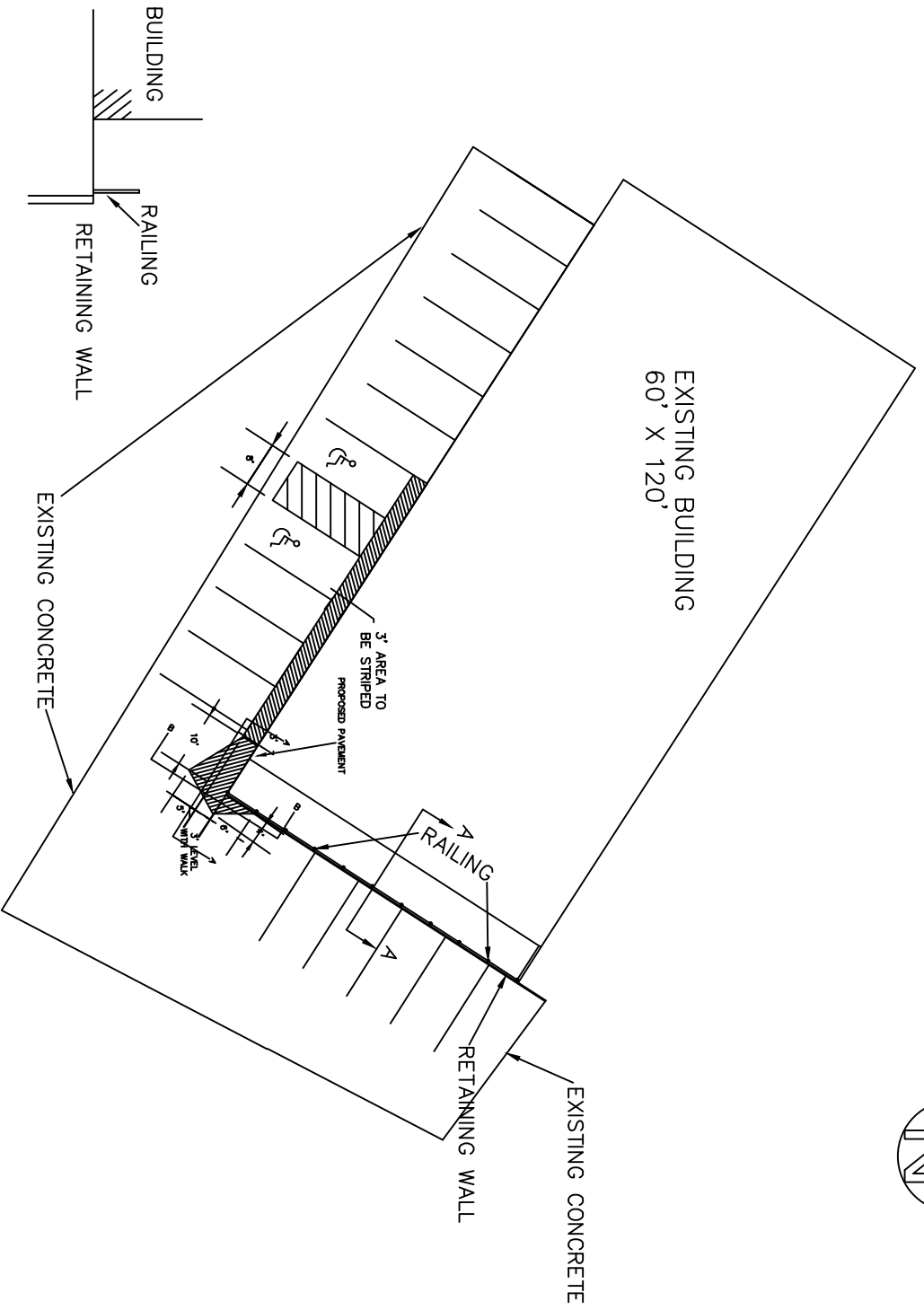
AVAILABLE SUITE AREA—\$6square foot NN*

Approximately 7,200 square feet

* Includes Real Estate Taxes and Insurance

CALL 330-729-1010 FOR MORE INFORMATION

www.coccadevelopment.com



SECTION A-A
1" = 10'

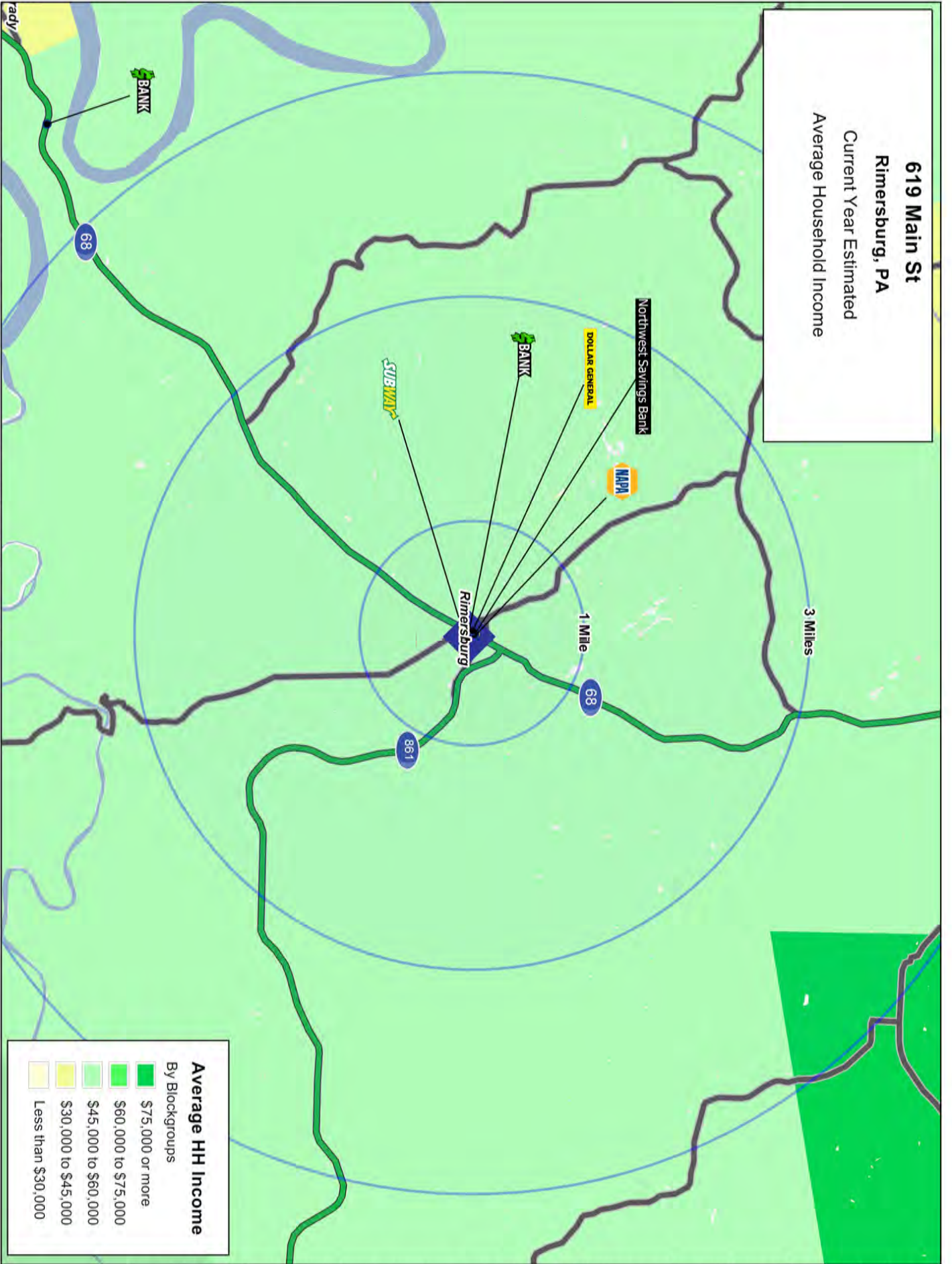
GRAPHIC SCALE





Top Green Sun

619 Main St
Rimersburg, PA
 Current Year Estimated
 Average Household Income



Average HH Income
 By Blockgroups

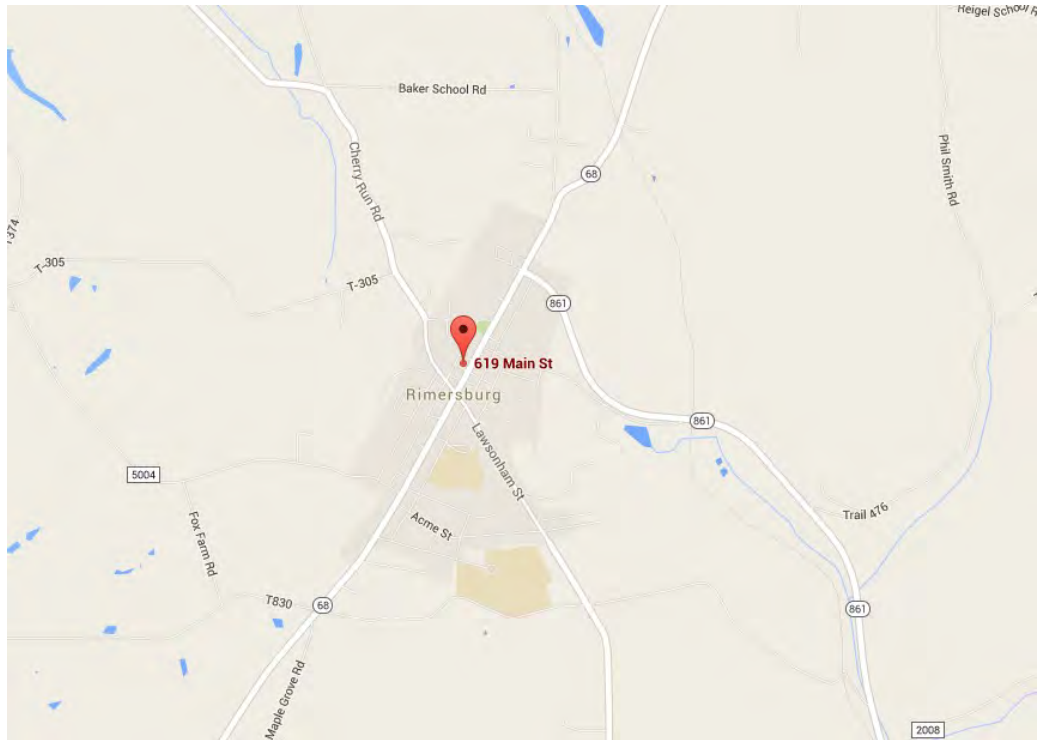
Dark Green	\$75,000 or more
Medium Green	\$60,000 to \$75,000
Light Green	\$45,000 to \$60,000
Yellow-Green	\$30,000 to \$45,000
Yellow	Less than \$30,000

This map was produced using data from private and government sources deemed to be reliable. The information herein is provided without representation or warranty.

619 Main Street

Rimersburg, PA 16248

The site is ideally located just under 14 miles south of Interstate 80 and 2.5 miles south of PA Route 861. It is 5 miles southeast of the town of Sligo and 16 miles southwest of Clarion.



It is also approximately 38.5 miles southwest of Cooks Forest an 8,500 acre Natural National Landmark. This is a popular camping destination which boasts 27 marked hiking trails totaling some 29 miles, bridle & bike trails, a public pool, and approximately 5,000 acres for hunting and trapping.

Rimersburg has a population density of 2,961 people per square mile.



It was incorporated as a borough in 1853 and is situated in the southwest part of Clarion County with part in Madison Township and the largest part in Toby Township.

COCCA DEVELOPMENT, LTD

619 Main Street

Rimersburg, PA 16248

AT A GLANCE

- The Borough of Rimersburg was originally settled in 1829 when John Rimer built a rude cabin which became the first tavern in the area and served old-time rye whiskey. It quickly became a popular spot and was often the scene of boisterous revelry.
- Rimersburg is comprised of 97.9% white population.
- The borough boasts 34.7% German, 7.1% Irish, and 6.3% Italian descendants
- There are 3 main religions—Catholic 22.7%, Mainline Protestant 20.1%, and Evangelical Protestant 12.8%. 43.9% of its residents do not practice a religious affiliation.
- Rimersburg is a large Republican battleground during elections.

GRAPHIC PROFILE

2000-2010 Census, 2014 Estimates with 2019 Projections

Calculated using Proportional Block Groups

Lat/Lon: 41.0426/-79.5023

RGRAP3

619 Main St

Rimersburg, PA

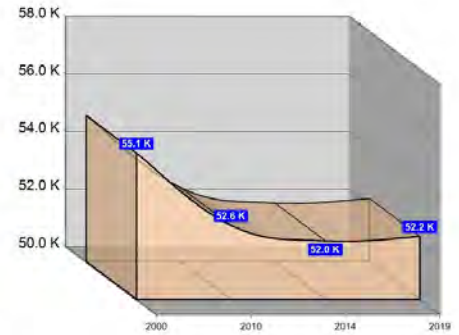
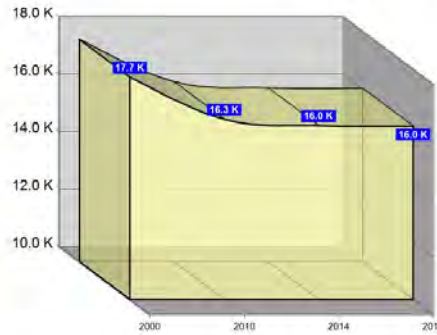
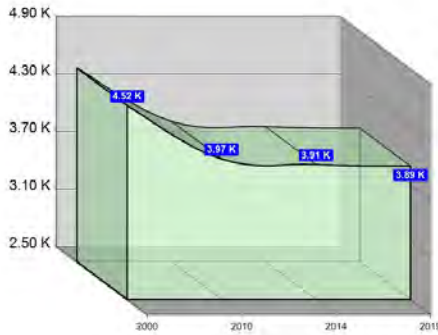
5 Miles

10 Miles

15 Miles

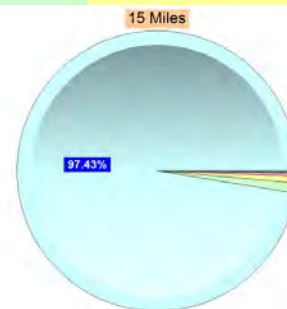
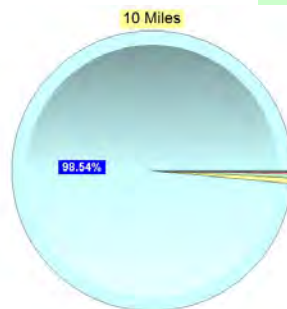
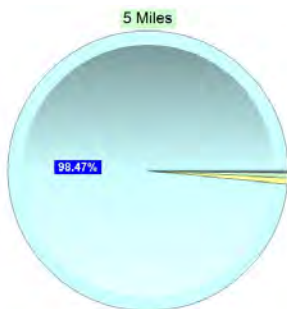
Population

Estimated Population (2014)	3,907	16,050	52,029
Projected Population (2019)	3,888	16,032	52,185
Census Population (2010)	3,965	16,268	52,571
Census Population (2000)	4,521	17,732	55,086
Projected Annual Growth (2014-2019)	-18 -0.1%	-17 -	157 0.1%
Historical Annual Growth (2010-2014)	-59 -3.5%	-218 -2.3%	-543 -1.2%
Historical Annual Growth (2000-2010)	-556 -1.2%	-1,464 -0.8%	-2,514 -0.5%
Estimated Population Density (2014)	50 <i>psm</i>	51 <i>psm</i>	74 <i>psm</i>
Trade Area Size	78.5 <i>sq mi</i>	314.0 <i>sq mi</i>	706.6 <i>sq mi</i>



Race and Ethnicity (2014)

Not Hispanic or Latino Population	3,884 99.4%	15,976 99.5%	51,670 99.3%
White	3,833 98.7%	15,767 98.7%	50,455 97.6%
Black or African American	21 0.5%	68 0.4%	590 1.1%
American Indian or Alaska Native	- -	7 -	44 0.1%
Asian	6 0.2%	36 0.2%	206 0.4%
Hawaiian or Pacific Islander	- -	- -	7 -
Other Race	2 0.1%	4 -	22 -
Two or More Races	22 0.6%	94 0.6%	347 0.7%
Hispanic or Latino Population	22 0.6%	73 0.5%	358 0.7%
White	14 62.5%	48 65.9%	238 66.3%
Black or African American	- -	1 0.8%	22 6.2%
American Indian or Alaska Native	- 0.7%	5 6.5%	8 2.4%
Asian	- -	- -	2 0.5%
Hispanic Hawaiian or Pacific Islander	- -	1 0.8%	4 1.0%
Other Race	2 11.1%	8 10.7%	46 12.8%
Two or More Races	6 25.7%	11 15.3%	39 10.9%



White Black or African American American Indian or Alaska Native Asian Hawaiian or Pacific Islander Other Race 2+ Races

This report was produced using data from private and government sources deemed to be reliable. The information herein is provided without representation or warranty.

GRAPHIC PROFILE

2000-2010 Census, 2014 Estimates with 2019 Projections

Calculated using Proportional Block Groups

Lat/Lon: 41.0426/-79.5023

RGRAP3

619 Main St

Rimersburg, PA

5 Miles

10 Miles

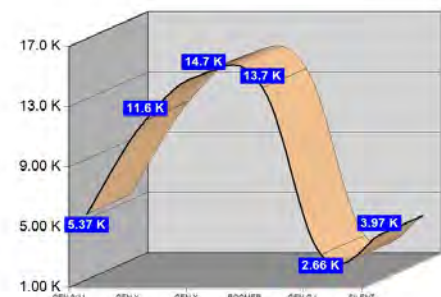
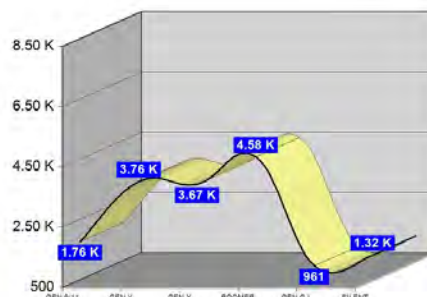
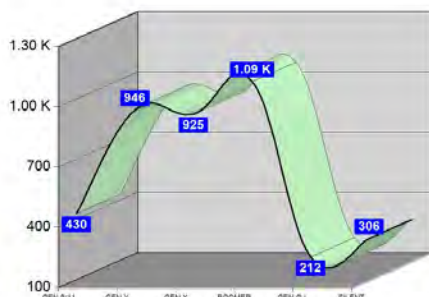
15 Miles

Age Distribution (2014)

	5 Miles	10 Miles	15 Miles
Age Under 5 Years	232 5.9%	911 5.7%	2,713 5.2%
Age 5 to 9 Years	198 5.1%	854 5.3%	2,658 5.1%
Age 10 to 14 Years	232 5.9%	924 5.8%	2,851 5.5%
Age 15 to 19 Years	226 5.8%	883 5.5%	4,065 7.8%
Age 20 to 24 Years	191 4.9%	849 5.3%	4,614 8.9%
Age 25 to 29 Years	276 7.1%	1,011 6.3%	3,153 6.1%
Age 30 to 34 Years	228 5.8%	862 5.4%	2,620 5.0%
Age 35 to 39 Years	222 5.7%	878 5.5%	2,651 5.1%
Age 40 to 44 Years	233 6.0%	921 5.7%	2,976 5.7%
Age 45 to 49 Years	262 6.7%	1,100 6.9%	3,348 6.4%
Age 50 to 54 Years	280 7.2%	1,211 7.5%	3,706 7.1%
Age 55 to 59 Years	305 7.8%	1,250 7.8%	3,758 7.2%
Age 60 to 64 Years	267 6.8%	1,147 7.1%	3,441 6.6%
Age 65 to 69 Years	236 6.0%	971 6.0%	2,839 5.5%
Age 70 to 74 Years	173 4.4%	743 4.6%	2,273 4.4%
Age 75 to 79 Years	133 3.4%	575 3.6%	1,701 3.3%
Age 80 to 84 Years	102 2.6%	450 2.8%	1,302 2.5%
Age 85 Years or Over	111 2.8%	511 3.2%	1,360 2.6%
Median Age	42.0	43.5	40.2

Generation (2014)

	5 Miles	10 Miles	15 Miles
Generation 9/11 Millennials (Age Under 10 Years)	430 11.0%	1,765 11.0%	5,371 10.3%
Gen Y to Echo Boomers (Age 10 to 29 Years)	925 23.7%	3,667 22.8%	14,683 28.2%
Gen Xers (Age 30 to 49 Years)	946 24.2%	3,761 23.4%	11,594 22.3%
Baby Boomers (Age 50 to 69 Years)	1,088 27.8%	4,578 28.5%	13,744 26.4%
Silent Generation (Age 70 to 79 Years)	306 7.8%	1,318 8.2%	3,974 7.6%
G.I. Generation (Age 80 Years or Over)	212 5.4%	961 6.0%	2,662 5.1%



This report was produced using data from private and government sources deemed to be reliable. The information herein is provided without representation or warranty.

GRAPHIC PROFILE

2000-2010 Census, 2014 Estimates with 2019 Projections

Calculated using Proportional Block Groups

Lat/Lon: 41.0426/-79.5023

RGRAP3

619 Main St

Rimersburg, PA

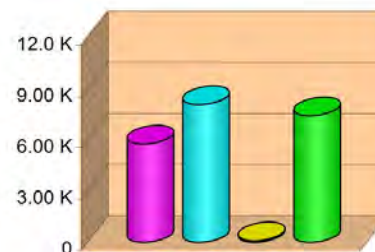
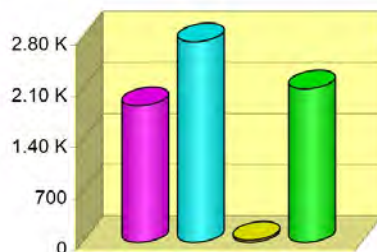
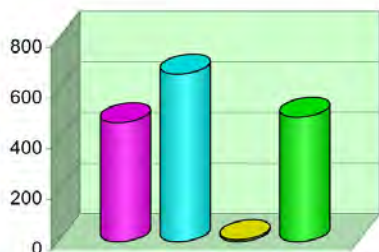
5 Miles

10 Miles

15 Miles

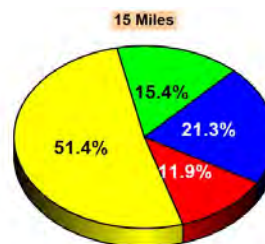
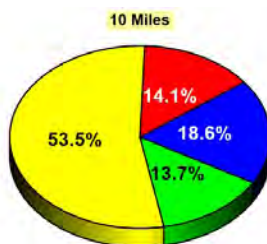
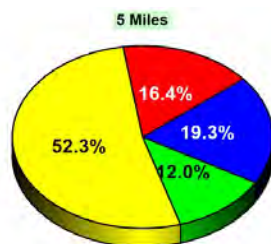
Household Type (2014)

	5 Miles	10 Miles	15 Miles
Total Households	1,635	6,740	21,357
Family Households	1,135 40.6%	4,612 40.7%	13,842 37.8%
Family Households with Children	471 41.5%	1,868 40.5%	5,768 41.7%
Family Households No Children	664 58.5%	2,744 59.5%	8,074 58.3%
Non-Family Households	501 40.6%	2,129 40.7%	7,514 37.8%
Non-Family Households with Children	8 1.6%	29 1.4%	92 1.2%
Non-Family Households No Children	493 98.4%	2,099 98.6%	7,422 98.8%



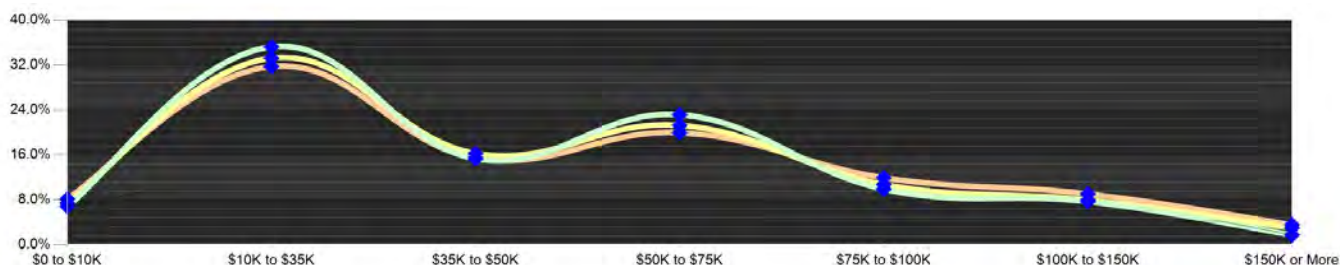
Education Attainment (2014)

	5 Miles	10 Miles	15 Miles
Elementary or Some High School	462 16.4%	1,624 14.1%	4,114 11.9%
High School Graduate	1,470 52.3%	6,151 53.5%	17,796 51.4%
Some College or Associate Degree	543 19.3%	2,138 18.6%	7,376 21.3%
Bachelor or Graduate Degree	336 12.0%	1,576 13.7%	5,333 15.4%



Household Income (2014)

	5 Miles	10 Miles	15 Miles
Estimated Average Household Income	\$45,405	\$48,686	\$49,792
Estimated Median Household Income	\$39,384	\$40,476	\$40,736
HH Income Under \$10,000	112 6.8%	500 7.4%	1,748 8.2%
HH Income \$10,000 to \$34,999	577 35.3%	2,243 33.3%	6,784 31.8%
HH Income \$35,000 to \$49,999	251 15.3%	1,097 16.3%	3,305 15.5%
HH Income \$50,000 to \$74,999	379 23.2%	1,435 21.3%	4,268 20.0%
HH Income \$75,000 to \$99,999	126 7.7%	538 8.0%	1,936 9.1%
HH Income \$100,000 to \$149,999	126 7.7%	538 8.0%	1,936 9.1%
HH Income \$150,000 or More	29 1.8%	202 3.0%	763 3.6%



This report was produced using data from private and government sources deemed to be reliable. The information herein is provided without representation or warranty.

EXPANDED PROFILE

2000-2010 Census, 2014 Estimates with 2019 Projections

Calculated using Proportional Block Groups

Lat/Lon: 41.0426/-79.5023

RF5

619 Main St

Rimersburg, PA

Population

	5 Miles	10 Miles	15 Miles
Estimated Population (2014)	3,907	16,050	52,029
Projected Population (2019)	3,888	16,032	52,185
Census Population (2010)	3,965	16,268	52,571
Census Population (2000)	4,521	17,732	55,086
Projected Annual Growth (2014 to 2019)	-18 -0.1%	-17 -	157 0.1%
Historical Annual Growth (2010 to 2014)	-59 -0.4%	-218 -0.3%	-543 -0.3%
Historical Annual Growth (2000 to 2010)	-556 -1.2%	-1,464 -0.8%	-2,514 -0.5%
Estimated Population Density (2014)	50 <i>psm</i>	51 <i>psm</i>	74 <i>psm</i>
Trade Area Size	78.49 <i>sq mi</i>	314.02 <i>sq mi</i>	706.57 <i>sq mi</i>

Households

Estimated Households (2014)	1,635	6,740	21,357
Projected Households (2019)	1,672	6,889	21,889
Census Households (2010)	1,614	6,653	21,041
Census Households (2000)	1,773	7,000	21,081
Estimated Households with Children (2014)	479 29.3%	1,897 28.1%	5,860 27.4%
Estimated Average Household Size (2014)	2.38	2.36	2.34

Average Household Income

Estimated Average Household Income (2014)	\$49,535	\$53,218	\$55,230
Projected Average Household Income (2019)	\$53,991	\$57,705	\$60,053
Estimated Average Family Income (2014)	\$55,155	\$62,311	\$66,542

Median Household Income

Estimated Median Household Income (2014)	\$41,463	\$43,427	\$44,962
Projected Median Household Income (2019)	\$45,310	\$47,179	\$48,961
Estimated Median Family Income (2014)	\$48,102	\$52,645	\$57,451

Per Capita Income

Estimated Per Capita Income (2014)	\$20,788	\$22,476	\$22,923
Projected Per Capita Income (2019)	\$23,278	\$24,937	\$25,468
Estimated Per Capita income 5 Year Growth	\$2,490 12.0%	\$2,461 11.0%	\$2,545 11.1%
Estimated Average Household Net Worth (2014)	\$301,289	\$312,861	\$325,426

Daytime Demos (2014)

Total Businesses	132	646	2,031
Total Employees	851	5,558	17,929
Company Headquarter Businesses	- -	1 0.2%	11 0.5%
Company Headquarter Employees	- -	3 -	379 2.1%
Employee Population per Business	6.5	8.6	8.8
Residential Population per Business	29.7	24.9	25.6

This report was produced using data from private and government sources deemed to be reliable. The information herein is provided without representation or warranty.

EXPANDED PROFILE

2000-2010 Census, 2014 Estimates with 2019 Projections

Calculated using Proportional Block Groups

Lat/Lon: 41.0426/-79.5023

RF5

619 Main St Rimersburg, PA	5 Miles		10 Miles		15 Miles	
Race & Ethnicity						
White (2014)	3,847	98.5%	15,815	98.5%	50,692	97.4%
Black or African American (2014)	21	0.5%	68	0.4%	612	1.2%
American Indian or Alaska Native (2014)	-	-	12	0.1%	52	0.1%
Asian (2014)	6	0.2%	36	0.2%	207	0.4%
Hawaiian or Pacific Islander (2014)	-	-	1	-	10	-
Other Race (2014)	5	0.1%	12	0.1%	68	0.1%
Two or More Races (2014)	28	0.7%	105	0.7%	387	0.7%
Not Hispanic or Latino Population (2014)	3,884	99.4%	15,976	99.5%	51,670	99.3%
Hispanic or Latino Population (2014)	22	0.6%	73	0.5%	358	0.7%
Not Hispanic or Latino Population (2019)	3,859	99.3%	15,938	99.4%	51,736	99.1%
Hispanic or Latino Population (2019)	29	0.7%	95	0.6%	449	0.9%
Not Hispanic or Latino Population (2010)	3,947	99.5%	16,207	99.6%	52,272	99.4%
Hispanic or Latino Population (2010)	19	0.5%	61	0.4%	299	0.6%
Not Hispanic or Latino Population (2000)	4,505	99.7%	17,672	99.7%	54,862	99.6%
Hispanic or Latino Population (2000)	16	0.3%	60	0.3%	224	0.4%
Projected Hispanic Annual Growth (2014 to 2019)	7	6.3%	21	5.8%	90	5.0%
Historic Hispanic Annual Growth (2000 to 2014)	6	2.9%	13	1.5%	135	4.3%
Age Distribution (2014)						
Age Under 5	232	5.9%	911	5.7%	2,713	5.2%
Age 5 to 9 Years	198	5.1%	854	5.3%	2,658	5.1%
Age 10 to 14 Years	232	5.9%	924	5.8%	2,851	5.5%
Age 15 to 19 Years	226	5.8%	883	5.5%	4,065	7.8%
Age 20 to 24 Years	191	4.9%	849	5.3%	4,614	8.9%
Age 25 to 29 Years	276	7.1%	1,011	6.3%	3,153	6.1%
Age 30 to 34 Years	228	5.8%	862	5.4%	2,620	5.0%
Age 35 to 39 Years	222	5.7%	878	5.5%	2,651	5.1%
Age 40 to 44 Years	233	6.0%	921	5.7%	2,976	5.7%
Age 45 to 49 Years	262	6.7%	1,100	6.9%	3,348	6.4%
Age 50 to 54 Years	280	7.2%	1,211	7.5%	3,706	7.1%
Age 55 to 59 Years	305	7.8%	1,250	7.8%	3,758	7.2%
Age 60 to 64 Years	267	6.8%	1,147	7.1%	3,441	6.6%
Age 65 to 74 Years	409	10.5%	1,714	10.7%	5,112	9.8%
Age 75 to 84 Years	235	6.0%	1,025	6.4%	3,003	5.8%
Age 85 Years or Over	111	2.8%	511	3.2%	1,360	2.6%
Median Age	42.0		43.5		40.2	
Gender Age Distribution (2014)						
Female Population	1,980	50.7%	8,109	50.5%	26,681	51.3%
Age 0 to 19 Years	425	21.4%	1,735	21.4%	6,185	23.2%
Age 20 to 64 Years	1,141	57.6%	4,563	56.3%	15,155	56.8%
Age 65 Years or Over	414	20.9%	1,811	22.3%	5,341	20.0%
Female Median Age	42.6		44.6		40.9	
Male Population	1,926	49.3%	7,941	49.5%	25,348	48.7%
Age 0 to 19 Years	463	24.1%	1,837	23.1%	6,103	24.1%
Age 20 to 64 Years	1,123	58.3%	4,665	58.7%	15,111	59.6%
Age 65 Years or Over	340	17.7%	1,439	18.1%	4,134	16.3%
Male Median Age	41.1		42.3		39.4	

This report was produced using data from private and government sources deemed to be reliable. The information herein is provided without representation or warranty.

EXPANDED PROFILE

2000-2010 Census, 2014 Estimates with 2019 Projections

Calculated using Proportional Block Groups

Lat/Lon: 41.0426/-79.5023

RF5

619 Main St

Rimersburg, PA

Household Income Distribution (2014)

	5 Miles		10 Miles		15 Miles	
HH Income \$200,000 or More	8	0.5%	71	1.1%	294	1.4%
HH Income \$150,000 to \$199,999	21	1.3%	131	1.9%	470	2.2%
HH Income \$100,000 to \$149,999	126	7.7%	538	8.0%	1,936	9.1%
HH Income \$75,000 to \$99,999	162	9.9%	725	10.8%	2,553	12.0%
HH Income \$50,000 to \$74,999	379	23.2%	1,435	21.3%	4,268	20.0%
HH Income \$35,000 to \$49,999	251	15.3%	1,097	16.3%	3,305	15.5%
HH Income \$25,000 to \$34,999	207	12.6%	836	12.4%	2,590	12.1%
HH Income \$15,000 to \$24,999	248	15.2%	938	13.9%	2,829	13.2%
HH Income Under \$15,000	234	14.3%	968	14.4%	3,113	14.6%
HH Income \$35,000 or More	947	57.9%	3,997	59.3%	12,825	60.1%
HH Income \$75,000 or More	317	19.4%	1,465	21.7%	5,252	24.6%

Housing (2014)

	5 Miles		10 Miles		15 Miles	
Total Housing Units	1,918		8,250		24,452	
Housing Units Occupied	1,635	85.3%	6,740	81.7%	21,357	87.3%
Housing Units Owner-Occupied	1,182	72.3%	5,001	74.2%	15,033	70.4%
Housing Units, Renter-Occupied	453	27.7%	1,739	25.8%	6,323	29.6%
Housing Units, Vacant	282	14.7%	1,509	18.3%	3,095	12.7%

Marital Status (2014)

	5 Miles		10 Miles		15 Miles	
Never Married	929	28.6%	3,610	27.0%	13,601	31.0%
Currently Married	1,669	51.5%	7,090	53.1%	21,551	49.2%
Separated	74	2.3%	452	3.4%	1,528	3.5%
Widowed	254	7.8%	1,035	7.7%	3,189	7.3%
Divorced	318	9.8%	1,174	8.8%	3,936	9.0%

Household Type (2014)

	5 Miles		10 Miles		15 Miles	
Population Family	3,256	83.3%	13,206	82.3%	39,301	75.5%
Population Non-Family	631	16.2%	2,674	16.7%	10,723	20.6%
Population Group Quarters	19	0.5%	170	1.1%	2,004	3.9%
Family Households	1,135	69.4%	4,612	68.4%	13,842	64.8%
Non-Family Households	501	30.6%	2,129	31.6%	7,514	35.2%
Married Couple with Children	311	18.6%	1,344	19.0%	4,026	18.7%
Average Family Household Size	2.9		2.9		2.8	

Household Size (2014)

	5 Miles		10 Miles		15 Miles	
1 Person Households	418	25.5%	1,809	26.8%	5,859	27.4%
2 Person Households	609	37.3%	2,494	37.0%	7,836	36.7%
3 Person Households	279	17.1%	1,078	16.0%	3,392	15.9%
4 Person Households	198	12.1%	843	12.5%	2,698	12.6%
5 Person Households	84	5.2%	342	5.1%	1,049	4.9%
6 or More Person Households	46	2.8%	174	2.6%	523	2.4%

Household Vehicles (2014)

	5 Miles		10 Miles		15 Miles	
Households with 0 Vehicles Available	130	8.0%	486	7.2%	1,674	7.8%
Households with 1 Vehicles Available	432	26.4%	1,970	29.2%	6,959	32.6%
Households with 2 or More Vehicles Available	1,073	65.6%	4,284	63.6%	12,723	59.6%
Total Vehicles Available	2,989		12,454		38,165	
Average Vehicles Per Household	1.8		1.8		1.8	

This report was produced using data from private and government sources deemed to be reliable. The information herein is provided without representation or warranty.

EXPANDED PROFILE

2000-2010 Census, 2014 Estimates with 2019 Projections

Calculated using Proportional Block Groups

Lat/Lon: 41.0426/-79.5023

RF5

619 Main St

Rimersburg, PA

Labor Force (2014)

	5 Miles	10 Miles	15 Miles
Estimated Labor Population Age 16 Years or Over	3,190	13,055	41,347
Estimated Civilian Employed	1,615 50.6%	6,812 52.2%	22,205 53.7%
Estimated Civilian Unemployed	156 4.9%	575 4.4%	1,848 4.5%
Estimated in Armed Forces	- -	2 -	4 -
Estimated Not in Labor Force	1,419 44.5%	5,666 43.4%	17,290 41.8%
Unemployment Rate	4.9%	4.4%	4.5%

Occupation (2010)

	5 Miles	10 Miles	15 Miles
Occupation: Population Age 16 Years or Over	1,660	6,733	22,657
Management, Business, Financial Operations	108 6.5%	529 7.9%	2,014 8.9%
Professional, Related	292 17.6%	1,218 18.1%	4,564 20.1%
Service	350 21.1%	1,286 19.1%	4,270 18.8%
Sales, Office	367 22.1%	1,366 20.3%	4,915 21.7%
Farming, Fishing, Forestry	22 1.3%	66 1.0%	236 1.0%
Construct, Extraction, Maintenance	192 11.6%	901 13.4%	2,518 11.1%
Production, Transport Material Moving	330 19.9%	1,367 20.3%	4,139 18.3%
White Collar Workers	766 46.1%	3,113 46.2%	11,493 50.7%
Blue Collar Workers	894 53.9%	3,620 53.8%	11,164 49.3%

Consumer Expenditure (2014)

	5 Miles	10 Miles	15 Miles
Total Household Expenditure	\$71.1 M	\$307 M	\$998 M
Total Non-Retail Expenditure	\$40.7 M 57.2%	\$176 M 57.2%	\$572 M 57.3%
Total Retail Expenditure	\$30.4 M 42.8%	\$131 M 42.8%	\$426 M 42.7%
Apparel	\$3.37 M 4.7%	\$14.6 M 4.8%	\$47.6 M 4.8%
Contributions	\$2.41 M 3.4%	\$10.7 M 3.5%	\$35.0 M 3.5%
Education	\$1.50 M 2.1%	\$6.68 M 2.2%	\$22.2 M 2.2%
Entertainment	\$3.94 M 5.5%	\$17.0 M 5.5%	\$55.4 M 5.5%
Food and Beverages	\$11.2 M 15.7%	\$48.0 M 15.6%	\$156 M 15.6%
Furnishings and Equipment	\$3.00 M 4.2%	\$13.1 M 4.2%	\$42.7 M 4.3%
Gifts	\$1.76 M 2.5%	\$7.74 M 2.5%	\$25.3 M 2.5%
Health Care	\$4.59 M 6.5%	\$19.7 M 6.4%	\$63.5 M 6.4%
Household Operations	\$2.38 M 3.4%	\$10.4 M 3.4%	\$34.1 M 3.4%
Miscellaneous Expenses	\$1.22 M 1.7%	\$5.24 M 1.7%	\$17.0 M 1.7%
Personal Care	\$1.04 M 1.5%	\$4.47 M 1.5%	\$14.5 M 1.5%
Personal Insurance	\$678 K 1.0%	\$2.98 M 1.0%	\$9.76 M 1.0%
Reading	\$233 K 0.3%	\$1.01 M 0.3%	\$3.28 M 0.3%
Shelter	\$13.7 M 19.2%	\$59.1 M 19.2%	\$192 M 19.2%
Tobacco	\$517 K 0.7%	\$2.19 M 0.7%	\$7.01 M 0.7%
Transportation	\$14.4 M 20.3%	\$62.1 M 20.2%	\$201 M 20.2%
Utilities	\$5.19 M 7.3%	\$22.2 M 7.2%	\$71.9 M 7.2%

Educational Attainment (2014)

	5 Miles	10 Miles	15 Miles
Adult Population Age 25 Years or Over	2,811	11,490	34,619
Elementary (Grade Level 0 to 8)	173 6.2%	553 4.8%	1,387 4.0%
Some High School (Grade Level 9 to 11)	288 10.3%	1,071 9.3%	2,727 7.9%
High School Graduate	1,470 52.3%	6,151 53.5%	17,796 51.4%
Some College	338 12.0%	1,384 12.0%	4,684 13.5%
Associate Degree Only	205 7.3%	755 6.6%	2,692 7.8%
Bachelor Degree Only	228 8.1%	1,039 9.0%	3,434 9.9%
Graduate Degree	108 3.9%	537 4.7%	1,899 5.5%

This report was produced using data from private and government sources deemed to be reliable. The information herein is provided without representation or warranty.

EXPANDED PROFILE

2000-2010 Census, 2014 Estimates with 2019 Projections

Calculated using Proportional Block Groups

Lat/Lon: 41.0426/-79.5023

RF5

619 Main St Rimersburg, PA	5 Miles		10 Miles		15 Miles	
Units In Structure (2010)						
1 Detached Unit	1,261	78.1%	5,209	78.3%	15,338	72.9%
1 Attached Unit	49	3.0%	206	3.1%	654	3.1%
2 to 4 Units	38	2.4%	222	3.3%	1,170	5.6%
5 to 9 Units	24	1.5%	75	1.1%	544	2.6%
10 to 19 Units	29	1.8%	72	1.1%	303	1.4%
20 to 49 Units	27	1.7%	64	1.0%	351	1.7%
50 or More Units	2	0.2%	129	1.9%	265	1.3%
Mobile Home or Trailer	184	11.4%	676	10.2%	2,408	11.4%
Other Structure	-	-	-	-	10	-
Homes Built By Year (2010)						
Homes Built 2005 or later	45	2.8%	173	2.6%	497	2.4%
Homes Built 2000 to 2004	50	3.1%	257	3.9%	898	4.3%
Homes Built 1990 to 1999	119	7.4%	549	8.3%	1,954	9.3%
Homes Built 1980 to 1989	182	11.3%	658	9.9%	2,218	10.5%
Homes Built 1970 to 1979	233	14.4%	886	13.3%	3,017	14.3%
Homes Built 1960 to 1969	132	8.2%	562	8.4%	1,786	8.5%
Homes Built 1950 to 1959	188	11.6%	768	11.5%	2,623	12.5%
Homes Built Before 1949	665	41.2%	2,800	42.1%	8,048	38.2%
Home Values (2010)						
Home Values \$1,000,000 or More	10	0.9%	23	0.5%	84	0.6%
Home Values \$500,000 to \$999,999	21	1.8%	85	1.7%	222	1.5%
Home Values \$400,000 to \$499,999	14	1.2%	63	1.3%	184	1.2%
Home Values \$300,000 to \$399,999	37	3.2%	172	3.5%	528	3.6%
Home Values \$200,000 to \$299,999	81	7.0%	443	9.0%	1,510	10.2%
Home Values \$150,000 to \$199,999	126	10.8%	570	11.6%	1,989	13.5%
Home Values \$100,000 to \$149,999	174	15.0%	933	19.0%	3,028	20.5%
Home Values \$70,000 to \$99,999	240	20.7%	930	18.9%	2,758	18.7%
Home Values \$50,000 to \$69,999	193	16.7%	692	14.1%	1,783	12.1%
Home Values \$25,000 to \$49,999	173	14.9%	594	12.1%	1,575	10.7%
Home Values Under \$25,000	91	7.9%	409	8.3%	1,082	7.3%
Owner-Occupied Median Home Value	\$86,057		\$95,137		\$104,629	
Renter-Occupied Median Rent	\$322		\$372		\$417	
Transportation To Work (2010)						
Drive to Work Alone	1,363	84.2%	5,417	82.1%	17,821	80.2%
Drive to Work in Carpool	151	9.3%	696	10.5%	2,199	9.9%
Travel to Work by Public Transportation	7	0.4%	31	0.5%	134	0.6%
Drive to Work on Motorcycle	2	0.1%	8	0.1%	16	0.1%
Walk or Bicycle to Work	30	1.9%	184	2.8%	1,152	5.2%
Other Means	10	0.6%	48	0.7%	107	0.5%
Work at Home	55	3.4%	213	3.2%	788	3.5%
Travel Time (2010)						
Travel to Work in 14 Minutes or Less	435	27.8%	1,754	27.5%	7,183	33.5%
Travel to Work in 15 to 29 Minutes	467	29.8%	2,042	32.0%	6,736	31.4%
Travel to Work in 30 to 59 Minutes	524	33.5%	2,041	32.0%	5,679	26.5%
Travel to Work in 60 Minutes or More	138	8.8%	547	8.6%	1,830	8.5%
Average Minutes Travel to Work	25.4		24.5		21.6	

This report was produced using data from private and government sources deemed to be reliable. The information herein is provided without representation or warranty.