

COCCA DEVELOPMENT

RETAIL SPACE FOR LEASE

8735 NIAGARA FALLS BOULEVARD

NIAGARA FALLS, NY 14304



- Join Dollar General in the heart of Niagara Falls, NY
- Formerly Krow's Nest Indoor Sports Center
- Large ample parking lot
- Easy ingress/egress on to Niagara Falls Boulevard

AVAILABLE SUITE AREA—\$7/square foot NNN:

Approximately 13,088 square feet*

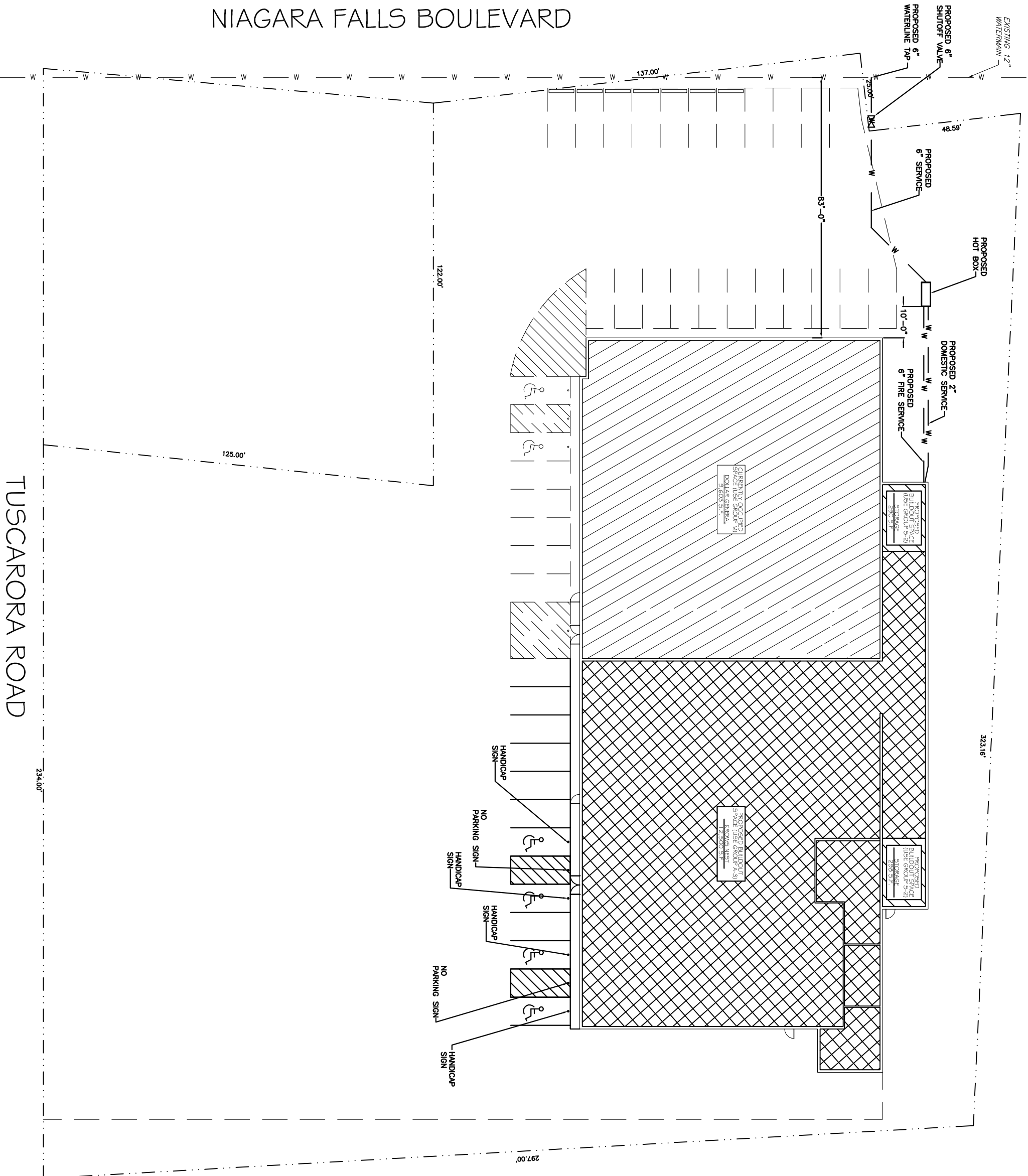
*Can be reduced for smaller space per needs

NNN: Base rent plus prorata share of Real Estate Taxes, Insurance, and Common Area expenses, including but not limited to snow removal, lawn care, and parking lot maintenance. Tenant pays separately metered utilities for gas, electric, water, sewer, & trash removal.

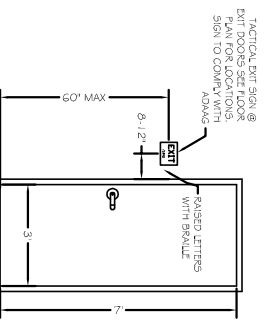
CALL 330-729-1010 FOR MORE INFORMATION

www.coccadevelopment.com

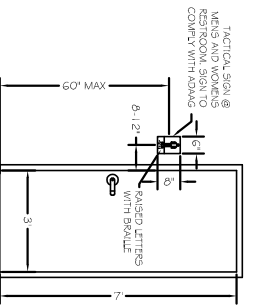
NIAGARA FALLS BOULEVARD



TUSCARORA ROAD



TACTICAL EXIT SIGNS
SCALE: 3/8" = 1'-0"



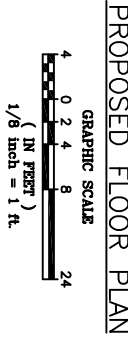
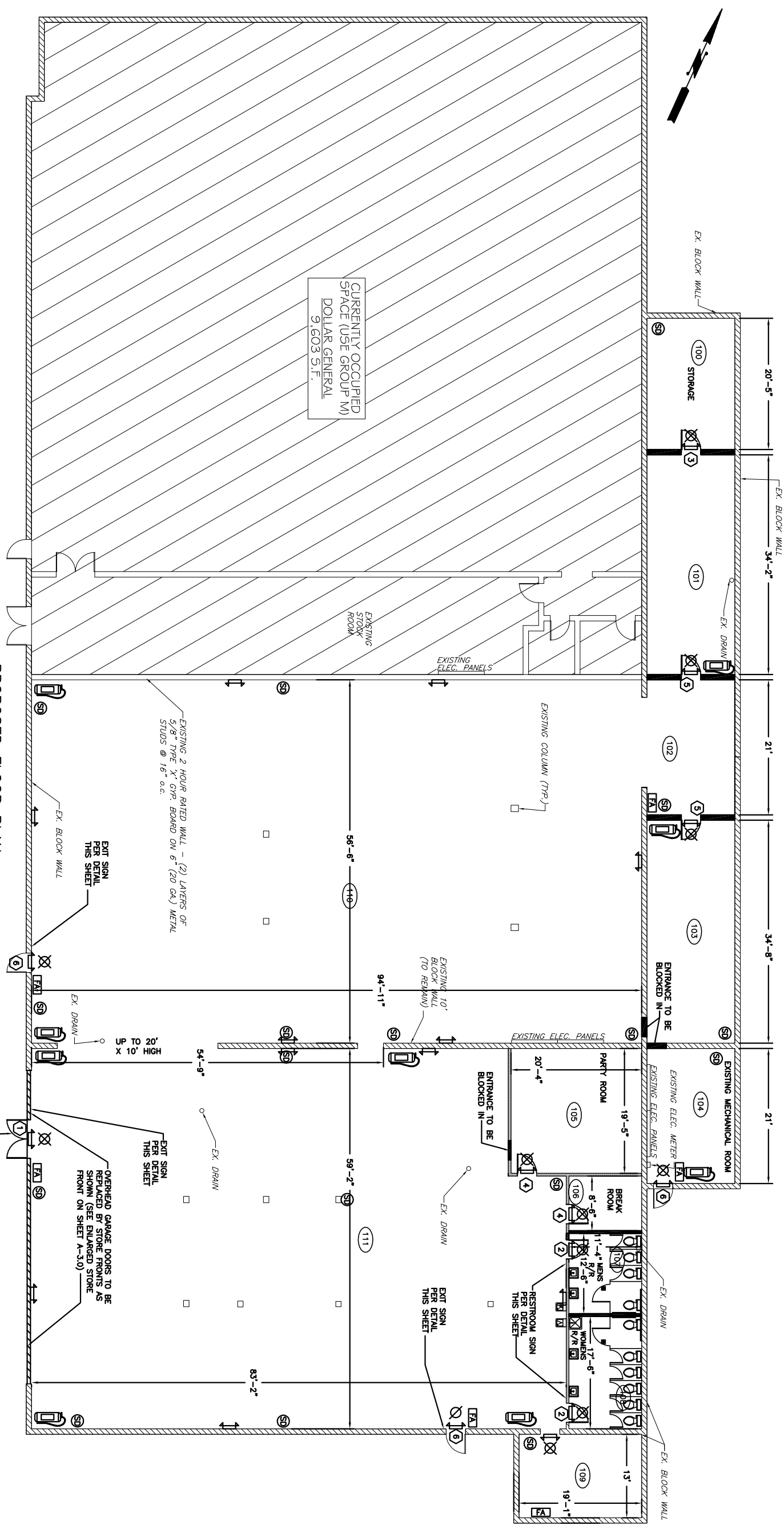
ANSI ICC/ANSI A117.1-2003 RESTROOM SIGNS
SCALE: 3/8" = 1'-0"

WALL HATCH LEGEND

- EXISTING MASONRY WALLS
- EXISTING FRAME WALL
- NEW INTERIOR WALLS

LEGEND

- FIRE EXTINGUISHER
- MANUAL/AUTOMATIC FIRE ALARM TIED TO HVAC/FAN SYSTEMS
- SMOKE DETECTORS TIED TO FIRE ALARM SYSTEM
- COMMUNICATIONS SYSTEM TIED TO EXIT LIGHTING AND MESSAGE TELLING PATRONS TO PROCEED TO THE NEAREST EXIT
- DOOR TYPE (SEE NEXT SHEET FOR DESCRIPTION)
- SMOKE DETECTORS TIED TO FIRE ALARM SYSTEM
- EXIT LIGHT
- EMERGENCY LIGHT
- EMERGENCY LIGHT
- EMERGENCY LIGHT



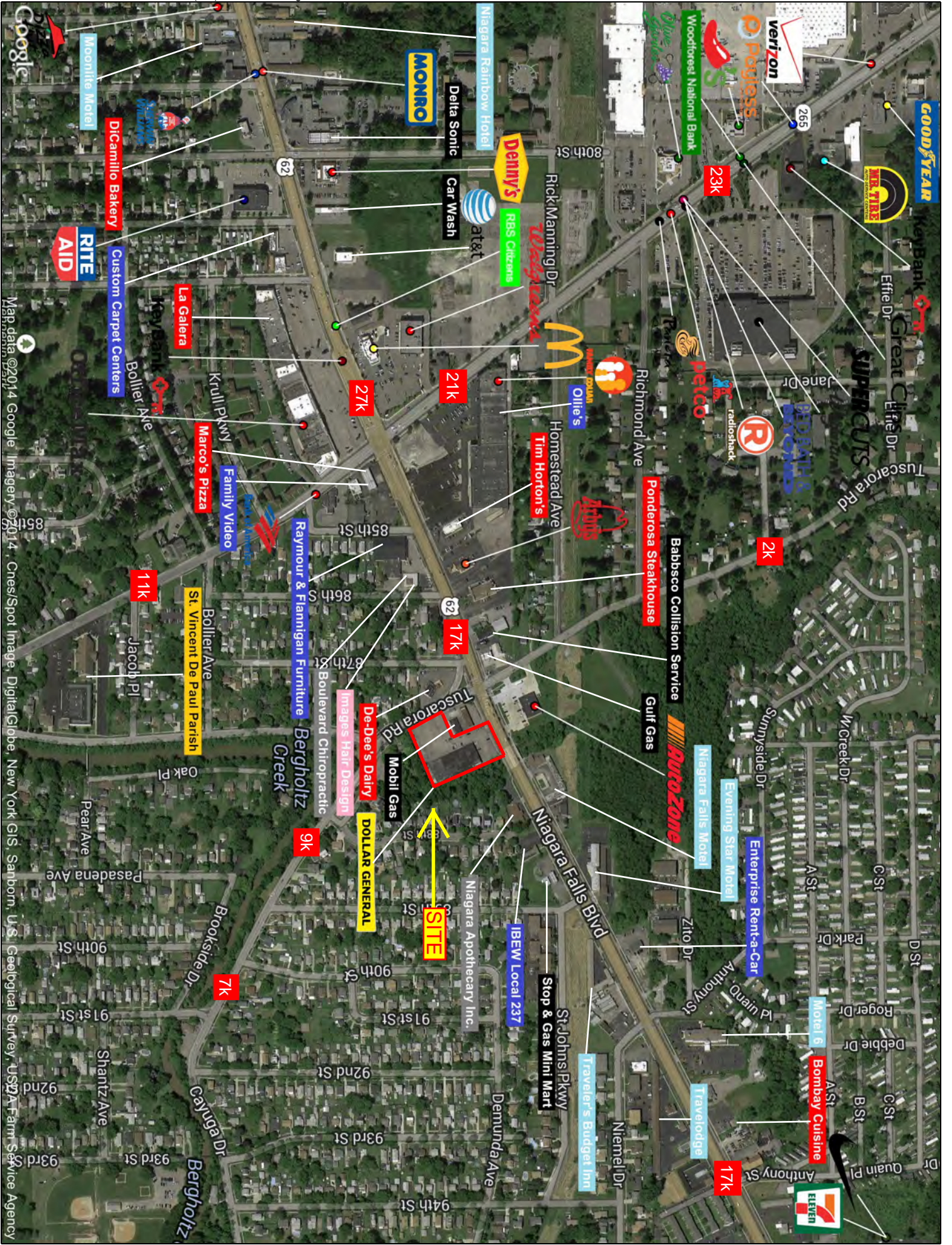
COCCA PROPERTIES 3, LLC
100 DEBARTOLO PLACE SUITE 400
BOARDMAN, OH 44512
PHONE : 330-729-1010
FAX: 330-729-1008

REVISIONS
1 2/23/09

KROWS NEST
8735 NIAGARA FALLS BLVD., SUITE B
CITY OF NIAGARA FALLS
NIAGARA COUNTY

PROPOSED FLOOR PLAN

DATE: 7/31/09
SCALE: 1/8" = 1'
DRAWN BY: SL
SHEET: A-2.0



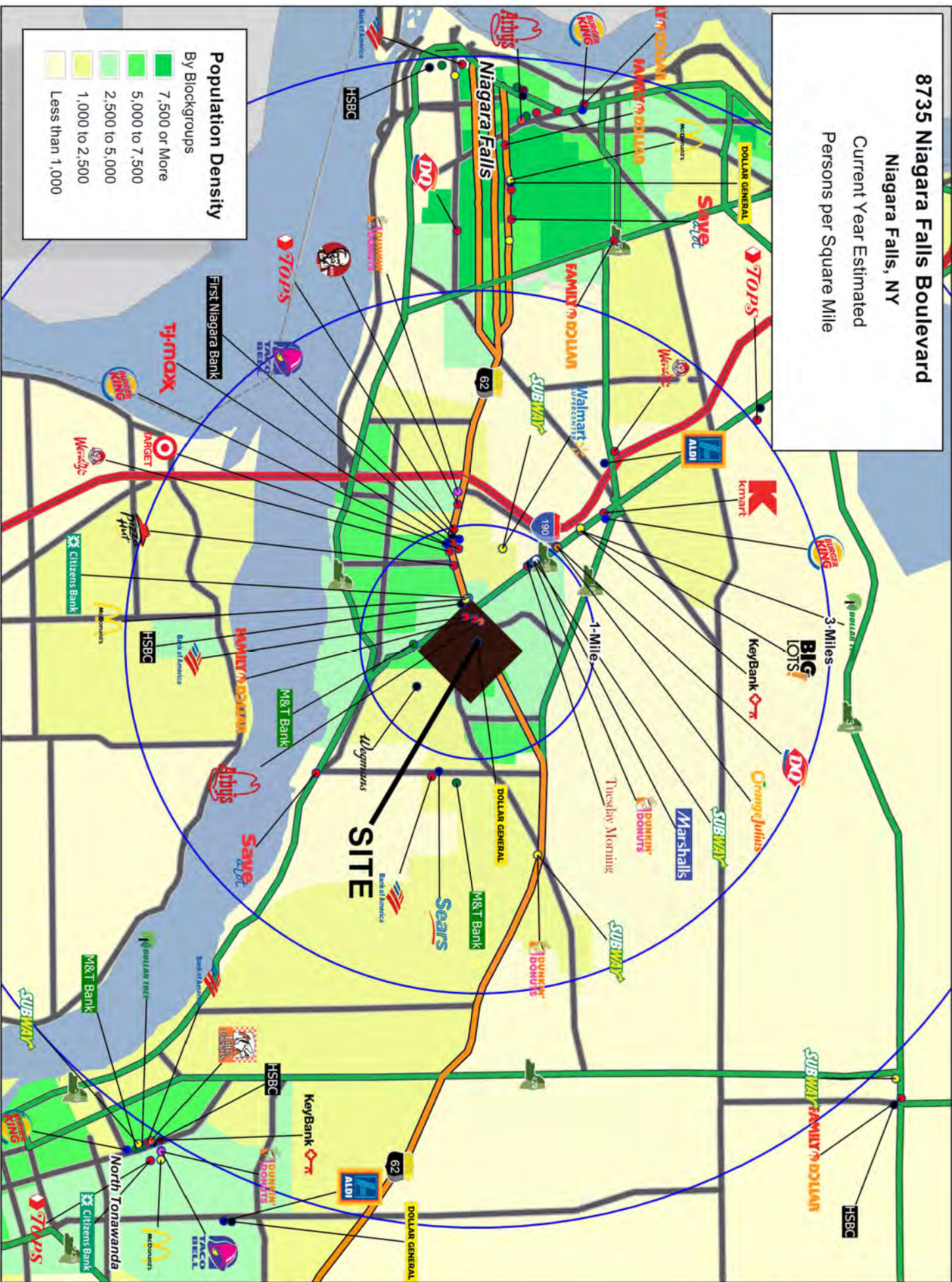
This map was produced using data from private and government sources deemed to be reliable. The information herein is provided without representation or warranty.

Map data ©2014 Google, Imagery ©2014 Cnes/Spot Image, DigitalGlobe, New York GIS, Sanborn, U.S. Geological Survey, USDA-Farm Service Agency

8735 Niagara Falls Boulevard

Niagara Falls, NY

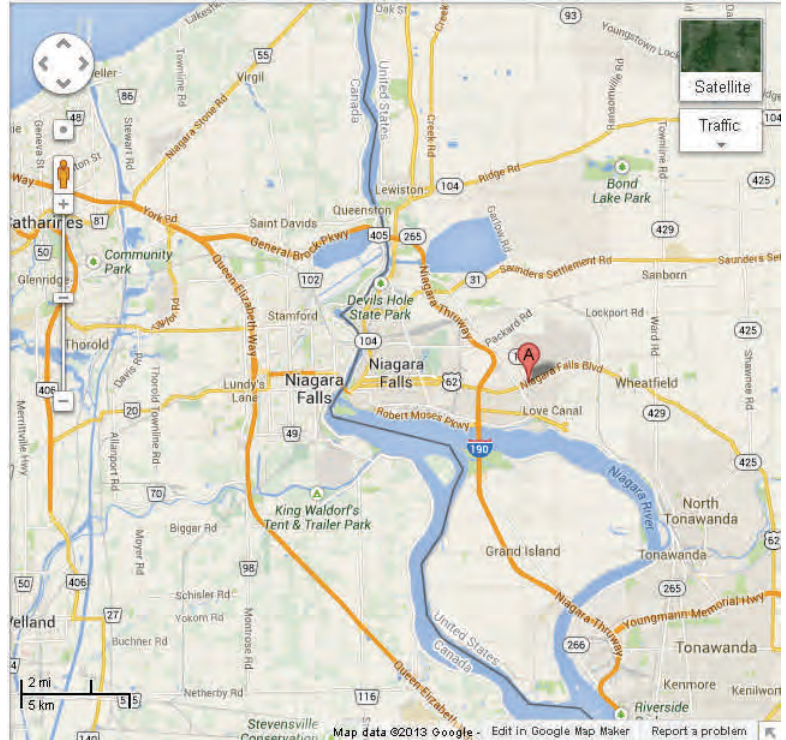
Current Year Estimated
Persons per Square Mile



This map was produced using data from private and government sources deemed to be reliable. The information herein is provided without representation or warranty.

8735 Niagara Falls Boulevard Niagara Falls, NY 14304

The site is ideally located at the intersection of Niagara Falls Boulevard and Cayuga Drive, approximately 1.5 miles east of I-190 and approximately 2 miles north of the LaSalle Expressway.



Niagara is the collective name for three waterfalls that straddle the international border between Canada and the United States, more specifically province of Ontario and state of New York. They form the southern end of the Niagara Gorge.



COCCA DEVELOPMENT, LTD

8737 Niagara Falls Boulevard

Niagara Falls, NY 14304

AT A GLANCE

- ◆ Located in Niagara County, New York
- ◆ Historically the city was built around factories utilizing power of the falling water for energy
- ◆ Visited by 10 million people annually. One of the US's top ten tourist destinations
- ◆ Currently the city's main industry is tourism with the addition of the Seneca casino in 2002
- ◆ Built along the Niagara Falls waterfalls and the Niagara Gorge which is located next to the Niagara River which flows from Lake Erie to Lake Ontario.

GRAPHIC PROFILE

2000-2010 Census, 2014 Estimates with 2019 Projections

Calculated using Proportional Block Groups

Lat/Lon: 43.0912/-78.9625

RGRAP3

8735 Niagara Falls Boulevard

Niagara Falls, NY

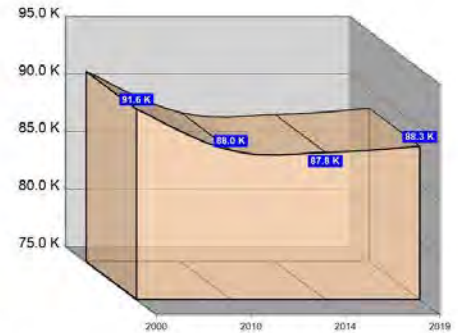
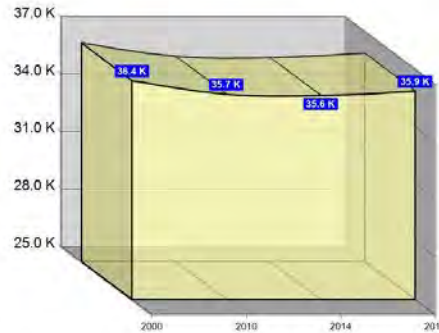
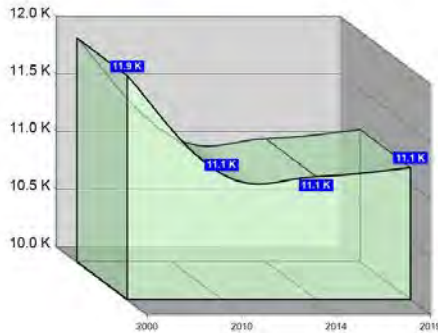
1 Mile

3 Miles

5 Miles

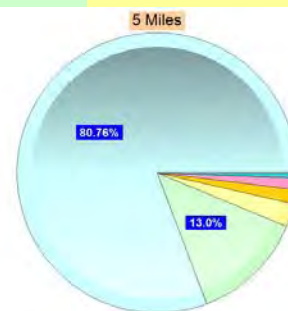
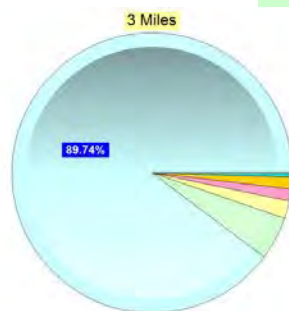
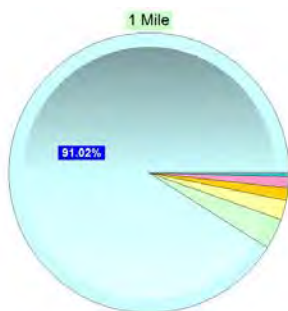
Population

Estimated Population (2014)	11,068	35,645	87,783
Projected Population (2019)	11,147	35,875	88,323
Census Population (2010)	11,089	35,717	87,965
Census Population (2000)	11,946	36,418	91,554
Projected Annual Growth (2014-2019)	78 0.1%	230 0.1%	540 0.1%
Historical Annual Growth (2010-2014)	-21 -1.9%	-72 -0.5%	-183 -1.0%
Historical Annual Growth (2000-2010)	-857 -0.7%	-701 -0.2%	-3,588 -0.4%
Estimated Population Density (2014)	3,526 psm	1,261 psm	1,118 psm
Trade Area Size	3.1 sq mi	28.3 sq mi	78.5 sq mi



Race and Ethnicity (2014)

Not Hispanic or Latino Population	10,869 98.2%	34,918 98.0%	85,422 97.3%
White	9,944 91.5%	31,492 90.2%	69,546 81.4%
Black or African American	386 3.6%	1,737 5.0%	11,157 13.1%
American Indian or Alaska Native	150 1.4%	463 1.3%	1,365 1.6%
Asian	141 1.3%	494 1.4%	1,134 1.3%
Hawaiian or Pacific Islander	1 -	4 -	9 -
Other Race	14 0.1%	57 0.2%	107 0.1%
Two or More Races	232 2.1%	671 1.9%	2,103 2.5%
Hispanic or Latino Population	200 1.8%	727 2.0%	2,361 2.7%
White	131 65.7%	495 68.1%	1,350 57.2%
Black or African American	7 3.6%	44 6.1%	242 10.3%
American Indian or Alaska Native	9 4.3%	16 2.2%	65 2.8%
Asian	1 0.5%	1 0.1%	11 0.5%
Hispanic Hawaiian or Pacific Islander	- -	- -	5 0.2%
Other Race	34 17.1%	118 16.3%	434 18.4%
Two or More Races	17 8.7%	52 7.1%	253 10.7%



■ White
 ■ Black or African American
 ■ American Indian or Alaska Native
 ■ Asian
 ■ Hawaiian or Pacific Islander
 ■ Other Race
 ■ 2+ Races

This report was produced using data from private and government sources deemed to be reliable. The information herein is provided without representation or warranty.

GRAPHIC PROFILE

2000-2010 Census, 2014 Estimates with 2019 Projections

Calculated using Proportional Block Groups

Lat/Lon: 43.0912/-78.9625

RGRAP3

8735 Niagara Falls Boulevard

Niagara Falls, NY

1 Mile

3 Miles

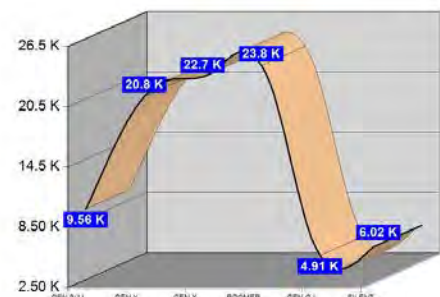
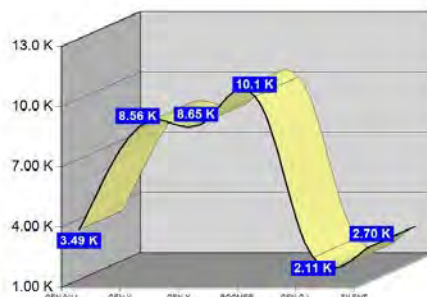
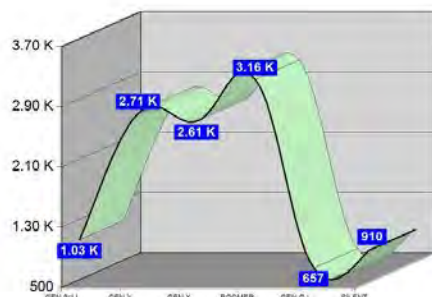
5 Miles

Age Distribution (2014)

Age Group	1 Mile	3 Miles	5 Miles
Age Under 5 Years	525 4.7%	1,708 4.8%	4,758 5.4%
Age 5 to 9 Years	504 4.6%	1,786 5.0%	4,798 5.5%
Age 10 to 14 Years	630 5.7%	2,004 5.6%	5,054 5.8%
Age 15 to 19 Years	589 5.3%	2,121 5.9%	5,771 6.6%
Age 20 to 24 Years	712 6.4%	2,316 6.5%	6,381 7.3%
Age 25 to 29 Years	673 6.1%	2,209 6.2%	5,496 6.3%
Age 30 to 34 Years	687 6.2%	2,116 5.9%	5,077 5.8%
Age 35 to 39 Years	658 5.9%	1,949 5.5%	4,659 5.3%
Age 40 to 44 Years	657 5.9%	2,102 5.9%	5,076 5.8%
Age 45 to 49 Years	706 6.4%	2,397 6.7%	5,956 6.8%
Age 50 to 54 Years	853 7.7%	2,833 7.9%	6,998 8.0%
Age 55 to 59 Years	917 8.3%	2,950 8.3%	6,798 7.7%
Age 60 to 64 Years	766 6.9%	2,436 6.8%	5,610 6.4%
Age 65 to 69 Years	623 5.6%	1,912 5.4%	4,420 5.0%
Age 70 to 74 Years	513 4.6%	1,519 4.3%	3,358 3.8%
Age 75 to 79 Years	398 3.6%	1,176 3.3%	2,659 3.0%
Age 80 to 84 Years	311 2.8%	991 2.8%	2,194 2.5%
Age 85 Years or Over	346 3.1%	1,121 3.1%	2,720 3.1%
Median Age	43.3	42.7	40.8

Generation (2014)

Generation	1 Mile	3 Miles	5 Miles
Generation 9/11 Millennials (Age Under 10 Years)	1,028 9.3%	3,495 9.8%	9,556 10.9%
Gen Y to Echo Boomers (Age 10 to 29 Years)	2,605 23.5%	8,649 24.3%	22,703 25.9%
Gen Xers (Age 30 to 49 Years)	2,708 24.5%	8,563 24.0%	20,768 23.7%
Baby Boomers (Age 50 to 69 Years)	3,160 28.5%	10,131 28.4%	23,826 27.1%
Silent Generation (Age 70 to 79 Years)	910 8.2%	2,695 7.6%	6,017 6.9%
G.I. Generation (Age 80 Years or Over)	657 5.9%	2,111 5.9%	4,914 5.6%



This report was produced using data from private and government sources deemed to be reliable. The information herein is provided without representation or warranty.

GRAPHIC PROFILE

2000-2010 Census, 2014 Estimates with 2019 Projections

Calculated using Proportional Block Groups

Lat/Lon: 43.0912/-78.9625

RGRAP3

8735 Niagara Falls Boulevard

Niagara Falls, NY

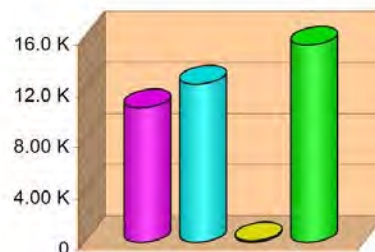
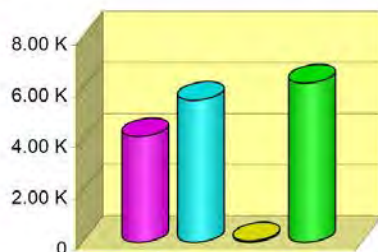
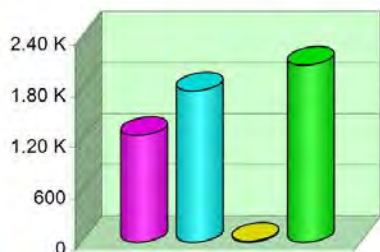
1 Mile

3 Miles

5 Miles

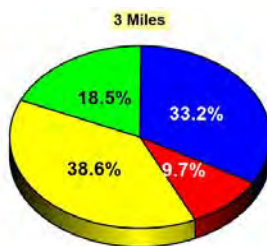
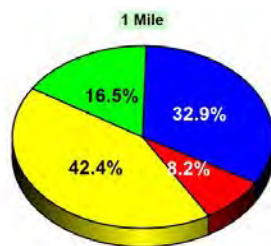
Household Type (2014)

	1 Mile	3 Miles	5 Miles
Total Households	5,119	15,967	38,435
Family Households	3,029 34.7%	9,685 34.8%	22,891 32.2%
Family Households with Children	1,254 41.4%	4,131 42.6%	10,519 46.0%
Family Households No Children	1,775 58.6%	5,554 57.4%	12,372 54.0%
Non-Family Households	2,090 34.7%	6,282 34.8%	15,544 32.2%
Non-Family Households with Children	13 0.6%	56 0.9%	122 0.8%
Non-Family Households No Children	2,077 99.4%	6,226 99.1%	15,422 99.2%



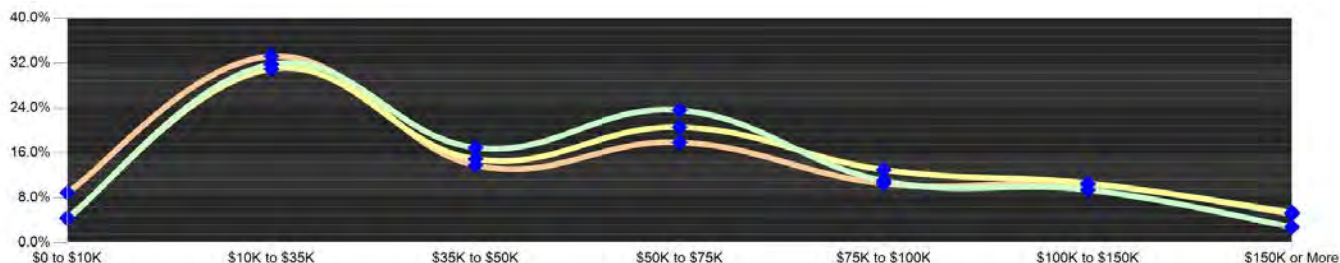
Education Attainment (2014)

	1 Mile	3 Miles	5 Miles
Elementary or Some High School	667 8.2%	2,479 9.7%	7,401 12.3%
High School Graduate	3,434 42.4%	9,857 38.6%	21,975 36.5%
Some College or Associate Degree	2,667 32.9%	8,477 33.2%	19,256 32.0%
Bachelor or Graduate Degree	1,336 16.5%	4,735 18.5%	11,583 19.2%



Household Income (2014)

	1 Mile	3 Miles	5 Miles
Estimated Average Household Income	\$47,963	\$54,149	\$51,417
Estimated Median Household Income	\$43,319	\$47,152	\$43,213
HH Income Under \$10,000	221 4.3%	715 4.5%	3,439 8.9%
HH Income \$10,000 to \$34,999	1,628 31.8%	4,944 31.0%	12,776 33.2%
HH Income \$35,000 to \$49,999	868 17.0%	2,384 14.9%	5,310 13.8%
HH Income \$50,000 to \$74,999	1,209 23.6%	3,289 20.6%	6,880 17.9%
HH Income \$75,000 to \$99,999	483 9.4%	1,693 10.6%	3,997 10.4%
HH Income \$100,000 to \$149,999	483 9.4%	1,693 10.6%	3,997 10.4%
HH Income \$150,000 or More	144 2.8%	865 5.4%	1,979 5.1%



This report was produced using data from private and government sources deemed to be reliable. The information herein is provided without representation or warranty.

EXPANDED PROFILE

2000-2010 Census, 2014 Estimates with 2019 Projections

Calculated using Proportional Block Groups

Lat/Lon: 43.0912/-78.9625

RF5

8735 Niagara Falls Boulevard Niagara Falls, NY	1 Mile	3 Miles	5 Miles
Population			
Estimated Population (2014)	11,068	35,645	87,783
Projected Population (2019)	11,147	35,875	88,323
Census Population (2010)	11,089	35,717	87,965
Census Population (2000)	11,946	36,418	91,554
Projected Annual Growth (2014 to 2019)	78 0.1%	230 0.1%	540 0.1%
Historical Annual Growth (2010 to 2014)	-21 -	-72 -0.1%	-183 -0.1%
Historical Annual Growth (2000 to 2010)	-857 -0.7%	-701 -0.2%	-3,588 -0.4%
Estimated Population Density (2014)	3,526 <i>psm</i>	1,261 <i>psm</i>	1,118 <i>psm</i>
Trade Area Size	3.14 <i>sq mi</i>	28.26 <i>sq mi</i>	78.49 <i>sq mi</i>
Households			
Estimated Households (2014)	5,119	15,967	38,435
Projected Households (2019)	5,243	16,365	39,402
Census Households (2010)	5,030	15,693	37,778
Census Households (2000)	5,110	14,976	37,693
Estimated Households with Children (2014)	1,266 24.7%	4,186 26.2%	10,641 27.7%
Estimated Average Household Size (2014)	2.16	2.22	2.24
Average Household Income			
Estimated Average Household Income (2014)	\$54,646	\$60,057	\$56,686
Projected Average Household Income (2019)	\$59,436	\$65,313	\$61,565
Estimated Average Family Income (2014)	\$65,395	\$72,652	\$70,760
Median Household Income			
Estimated Median Household Income (2014)	\$47,671	\$50,698	\$46,195
Projected Median Household Income (2019)	\$52,112	\$55,335	\$50,396
Estimated Median Family Income (2014)	\$58,528	\$65,586	\$61,452
Per Capita Income			
Estimated Per Capita Income (2014)	\$25,275	\$26,933	\$24,917
Projected Per Capita Income (2019)	\$27,962	\$29,827	\$27,560
Estimated Per Capita income 5 Year Growth	\$2,688 10.6%	\$2,894 10.7%	\$2,644 10.6%
Estimated Average Household Net Worth (2014)	\$322,318	\$370,958	\$354,435
Daytime Demos (2014)			
Total Businesses	415	1,457	3,340
Total Employees	3,998	16,394	37,918
Company Headquarter Businesses	- -	6 0.4%	16 0.5%
Company Headquarter Employees	9 0.2%	445 2.7%	1,239 3.3%
Employee Population per Business	9.6	11.2	11.4
Residential Population per Business	26.7	24.5	26.3

This report was produced using data from private and government sources deemed to be reliable. The information herein is provided without representation or warranty.

EXPANDED PROFILE

2000-2010 Census, 2014 Estimates with 2019 Projections

Calculated using Proportional Block Groups

Lat/Lon: 43.0912/-78.9625

RF5

8735 Niagara Falls Boulevard						
Niagara Falls, NY						
	1 Mile		3 Miles		5 Miles	
Race & Ethnicity						
White (2014)	10,075	91.0%	31,987	89.7%	70,895	80.8%
Black or African American (2014)	394	3.6%	1,781	5.0%	11,399	13.0%
American Indian or Alaska Native (2014)	158	1.4%	479	1.3%	1,430	1.6%
Asian (2014)	142	1.3%	495	1.4%	1,145	1.3%
Hawaiian or Pacific Islander (2014)	1	-	4	-	14	-
Other Race (2014)	49	0.4%	176	0.5%	542	0.6%
Two or More Races (2014)	250	2.3%	723	2.0%	2,357	2.7%
Not Hispanic or Latino Population (2014)	10,869	98.2%	34,918	98.0%	85,422	97.3%
Hispanic or Latino Population (2014)	200	1.8%	727	2.0%	2,361	2.7%
Not Hispanic or Latino Population (2019)	10,923	98.0%	35,060	97.7%	85,681	97.0%
Hispanic or Latino Population (2019)	223	2.0%	814	2.3%	2,642	3.0%
Not Hispanic or Latino Population (2010)	10,912	98.4%	35,067	98.2%	85,845	97.6%
Hispanic or Latino Population (2010)	177	1.6%	650	1.8%	2,120	2.4%
Not Hispanic or Latino Population (2000)	11,828	99.0%	36,046	99.0%	90,150	98.5%
Hispanic or Latino Population (2000)	119	1.0%	373	1.0%	1,404	1.5%
Projected Hispanic Annual Growth (2014 to 2019)	24	2.4%	88	2.4%	281	2.4%
Historic Hispanic Annual Growth (2000 to 2014)	81	4.9%	354	6.8%	957	4.9%
Age Distribution (2014)						
Age Under 5	525	4.7%	1,708	4.8%	4,758	5.4%
Age 5 to 9 Years	504	4.6%	1,786	5.0%	4,798	5.5%
Age 10 to 14 Years	630	5.7%	2,004	5.6%	5,054	5.8%
Age 15 to 19 Years	589	5.3%	2,121	5.9%	5,771	6.6%
Age 20 to 24 Years	712	6.4%	2,316	6.5%	6,381	7.3%
Age 25 to 29 Years	673	6.1%	2,209	6.2%	5,496	6.3%
Age 30 to 34 Years	687	6.2%	2,116	5.9%	5,077	5.8%
Age 35 to 39 Years	658	5.9%	1,949	5.5%	4,659	5.3%
Age 40 to 44 Years	657	5.9%	2,102	5.9%	5,076	5.8%
Age 45 to 49 Years	706	6.4%	2,397	6.7%	5,956	6.8%
Age 50 to 54 Years	853	7.7%	2,833	7.9%	6,998	8.0%
Age 55 to 59 Years	917	8.3%	2,950	8.3%	6,798	7.7%
Age 60 to 64 Years	766	6.9%	2,436	6.8%	5,610	6.4%
Age 65 to 74 Years	1,136	10.3%	3,431	9.6%	7,777	8.9%
Age 75 to 84 Years	708	6.4%	2,167	6.1%	4,852	5.5%
Age 85 Years or Over	346	3.1%	1,121	3.1%	2,720	3.1%
Median Age	43.3		42.7		40.8	
Gender Age Distribution (2014)						
Female Population	5,702	51.5%	18,469	51.8%	45,545	51.9%
Age 0 to 19 Years	1,087	19.1%	3,701	20.0%	10,013	22.0%
Age 20 to 64 Years	3,370	59.1%	10,899	59.0%	26,638	58.5%
Age 65 Years or Over	1,244	21.8%	3,870	21.0%	8,894	19.5%
Female Median Age	45.2		44.5		42.3	
Male Population	5,367	48.5%	17,175	48.2%	42,238	48.1%
Age 0 to 19 Years	1,161	21.6%	3,918	22.8%	10,369	24.5%
Age 20 to 64 Years	3,260	60.8%	10,409	60.6%	25,413	60.2%
Age 65 Years or Over	946	17.6%	2,849	16.6%	6,457	15.3%
Male Median Age	41.2		40.8		39.2	

This report was produced using data from private and government sources deemed to be reliable. The information herein is provided without representation or warranty.

EXPANDED PROFILE

2000-2010 Census, 2014 Estimates with 2019 Projections

Calculated using Proportional Block Groups

Lat/Lon: 43.0912/-78.9625

RF5

8735 Niagara Falls Boulevard

Niagara Falls, NY

Household Income Distribution (2014)

	1 Mile		3 Miles		5 Miles	
HH Income \$200,000 or More	73	1.4%	312	2.0%	712	1.9%
HH Income \$150,000 to \$199,999	71	1.4%	553	3.5%	1,267	3.3%
HH Income \$100,000 to \$149,999	483	9.4%	1,693	10.6%	3,997	10.4%
HH Income \$75,000 to \$99,999	566	11.1%	2,078	13.0%	4,055	10.6%
HH Income \$50,000 to \$74,999	1,209	23.6%	3,289	20.6%	6,880	17.9%
HH Income \$35,000 to \$49,999	868	17.0%	2,384	14.9%	5,310	13.8%
HH Income \$25,000 to \$34,999	572	11.2%	1,784	11.2%	4,948	12.9%
HH Income \$15,000 to \$24,999	763	14.9%	2,249	14.1%	5,350	13.9%
HH Income Under \$15,000	513	10.0%	1,625	10.2%	5,916	15.4%
HH Income \$35,000 or More	3,270	63.9%	10,308	64.6%	22,221	57.8%
HH Income \$75,000 or More	1,192	23.3%	4,636	29.0%	10,032	26.1%

Housing (2014)

	1 Mile		3 Miles		5 Miles	
Total Housing Units	5,310		16,723		42,164	
Housing Units Occupied	5,119	96.4%	15,967	95.5%	38,435	91.2%
Housing Units Owner-Occupied	3,870	75.6%	11,381	71.3%	24,259	63.1%
Housing Units, Renter-Occupied	1,248	24.4%	4,586	28.7%	14,177	36.9%
Housing Units, Vacant	191	3.6%	757	4.5%	3,729	8.8%

Marital Status (2014)

	1 Mile		3 Miles		5 Miles	
Never Married	3,044	32.4%	9,628	31.9%	25,473	34.8%
Currently Married	4,055	43.1%	13,238	43.9%	30,204	41.3%
Separated	525	5.6%	1,485	4.9%	3,532	4.8%
Widowed	693	7.4%	2,297	7.6%	5,419	7.4%
Divorced	1,092	11.6%	3,498	11.6%	8,544	11.7%

Household Type (2014)

	1 Mile		3 Miles		5 Miles	
Population Family	8,433	76.2%	27,393	76.9%	66,192	75.4%
Population Non-Family	2,630	23.8%	8,081	22.7%	20,069	22.9%
Population Group Quarters	5	-	170	0.5%	1,522	1.7%
Family Households	3,029	59.2%	9,685	60.7%	22,891	59.6%
Non-Family Households	2,090	40.8%	6,282	39.3%	15,544	40.4%
Married Couple with Children	742	18.3%	2,438	18.4%	5,581	18.5%
Average Family Household Size	2.8		2.8		2.9	

Household Size (2014)

	1 Mile		3 Miles		5 Miles	
1 Person Households	1,787	34.9%	5,331	33.4%	13,194	34.3%
2 Person Households	1,738	34.0%	5,379	33.7%	12,307	32.0%
3 Person Households	792	15.5%	2,472	15.5%	5,866	15.3%
4 Person Households	500	9.8%	1,769	11.1%	4,307	11.2%
5 Person Households	211	4.1%	692	4.3%	1,839	4.8%
6 or More Person Households	89	1.7%	324	2.0%	921	2.4%

Household Vehicles (2014)

	1 Mile		3 Miles		5 Miles	
Households with 0 Vehicles Available	491	9.6%	1,392	8.7%	5,678	14.8%
Households with 1 Vehicles Available	2,405	47.0%	7,047	44.1%	15,930	41.4%
Households with 2 or More Vehicles Available	2,223	43.4%	7,528	47.1%	16,828	43.8%
Total Vehicles Available	7,497		24,473		55,260	
Average Vehicles Per Household	1.5		1.5		1.4	

This report was produced using data from private and government sources deemed to be reliable. The information herein is provided without representation or warranty.

EXPANDED PROFILE

2000-2010 Census, 2014 Estimates with 2019 Projections

Calculated using Proportional Block Groups

Lat/Lon: 43.0912/-78.9625

RF5

8735 Niagara Falls Boulevard

Niagara Falls, NY

Labor Force (2014)

	1 Mile	3 Miles	5 Miles
Estimated Labor Population Age 16 Years or Over	9,295	29,596	70,669
Estimated Civilian Employed	5,497 59.1%	17,102 57.8%	38,425 54.4%
Estimated Civilian Unemployed	412 4.4%	1,332 4.5%	3,335 4.7%
Estimated in Armed Forces	16 0.2%	59 0.2%	89 0.1%
Estimated Not in Labor Force	3,370 36.3%	11,103 37.5%	28,820 40.8%
Unemployment Rate	4.4%	4.5%	4.7%

Occupation (2010)

	1 Mile	3 Miles	5 Miles
Occupation: Population Age 16 Years or Over	5,260	16,418	38,164
Management, Business, Financial Operations	472 9.0%	2,055 12.5%	4,626 12.1%
Professional, Related	833 15.8%	2,854 17.4%	6,704 17.6%
Service	1,139 21.7%	3,298 20.1%	8,170 21.4%
Sales, Office	1,480 28.1%	4,576 27.9%	10,485 27.5%
Farming, Fishing, Forestry	- -	5 -	100 0.3%
Construct, Extraction, Maintenance	436 8.3%	1,348 8.2%	2,959 7.8%
Production, Transport Material Moving	899 17.1%	2,282 13.9%	5,121 13.4%
White Collar Workers	2,785 53.0%	9,485 57.8%	21,815 57.2%
Blue Collar Workers	2,475 47.0%	6,933 42.2%	16,349 42.8%

Consumer Expenditure (2014)

	1 Mile	3 Miles	5 Miles
Total Household Expenditure	\$237 M	\$789 M	\$1.82 B
Total Non-Retail Expenditure	\$136 M 57.3%	\$453 M 57.4%	\$1.04 B 57.3%
Total Retail Expenditure	\$101 M 42.7%	\$336 M 42.6%	\$777 M 42.7%
Apparel	\$11.3 M 4.8%	\$37.7 M 4.8%	\$87.0 M 4.8%
Contributions	\$8.26 M 3.5%	\$28.7 M 3.6%	\$65.8 M 3.6%
Education	\$5.19 M 2.2%	\$18.2 M 2.3%	\$42.7 M 2.3%
Entertainment	\$13.1 M 5.5%	\$43.9 M 5.6%	\$101 M 5.5%
Food and Beverages	\$37.0 M 15.6%	\$122 M 15.4%	\$282 M 15.5%
Furnishings and Equipment	\$10.2 M 4.3%	\$34.2 M 4.3%	\$78.4 M 4.3%
Gifts	\$6.03 M 2.5%	\$20.6 M 2.6%	\$47.5 M 2.6%
Health Care	\$15.2 M 6.4%	\$49.4 M 6.3%	\$114 M 6.3%
Household Operations	\$8.10 M 3.4%	\$27.7 M 3.5%	\$63.6 M 3.5%
Miscellaneous Expenses	\$4.08 M 1.7%	\$13.3 M 1.7%	\$30.9 M 1.7%
Personal Care	\$3.46 M 1.5%	\$11.5 M 1.5%	\$26.5 M 1.5%
Personal Insurance	\$2.30 M 1.0%	\$7.90 M 1.0%	\$18.1 M 1.0%
Reading	\$784 K 0.3%	\$2.61 M 0.3%	\$6.01 M 0.3%
Shelter	\$45.5 M 19.2%	\$152 M 19.3%	\$351 M 19.3%
Tobacco	\$1.67 M 0.7%	\$5.32 M 0.7%	\$12.4 M 0.7%
Transportation	\$48.1 M 20.2%	\$158 M 20.1%	\$363 M 19.9%
Utilities	\$17.1 M 7.2%	\$55.9 M 7.1%	\$130 M 7.1%

Educational Attainment (2014)

	1 Mile	3 Miles	5 Miles
Adult Population Age 25 Years or Over	8,104	25,549	60,215
Elementary (Grade Level 0 to 8)	209 2.6%	521 2.0%	2,010 3.3%
Some High School (Grade Level 9 to 11)	459 5.7%	1,958 7.7%	5,391 9.0%
High School Graduate	3,434 42.4%	9,857 38.6%	21,975 36.5%
Some College	1,663 20.5%	4,955 19.4%	12,195 20.3%
Associate Degree Only	1,004 12.4%	3,522 13.8%	7,061 11.7%
Bachelor Degree Only	818 10.1%	2,863 11.2%	6,805 11.3%
Graduate Degree	519 6.4%	1,872 7.3%	4,777 7.9%

This report was produced using data from private and government sources deemed to be reliable. The information herein is provided without representation or warranty.

EXPANDED PROFILE

2000-2010 Census, 2014 Estimates with 2019 Projections

Calculated using Proportional Block Groups

Lat/Lon: 43.0912/-78.9625

RF5

8735 Niagara Falls Boulevard

Niagara Falls, NY

Units In Structure (2010)

	1 Mile		3 Miles		5 Miles	
1 Detached Unit	3,393	67.4%	10,579	67.4%	23,940	63.4%
1 Attached Unit	79	1.6%	369	2.4%	832	2.2%
2 to 4 Units	294	5.9%	1,404	8.9%	6,397	16.9%
5 to 9 Units	163	3.2%	618	3.9%	1,753	4.6%
10 to 19 Units	266	5.3%	837	5.3%	1,203	3.2%
20 to 49 Units	160	3.2%	325	2.1%	806	2.1%
50 or More Units	67	1.3%	539	3.4%	1,670	4.4%
Mobile Home or Trailer	608	12.1%	1,020	6.5%	1,151	3.0%
Other Structure	-	-	2	-	26	0.1%

Homes Built By Year (2010)

Homes Built 2005 or later	74	1.5%	446	2.8%	1,099	2.9%
Homes Built 2000 to 2004	87	1.7%	468	3.0%	1,068	2.8%
Homes Built 1990 to 1999	247	4.9%	1,033	6.6%	2,390	6.3%
Homes Built 1980 to 1989	449	8.9%	1,329	8.5%	2,617	6.9%
Homes Built 1970 to 1979	583	11.6%	1,904	12.1%	4,077	10.8%
Homes Built 1960 to 1969	539	10.7%	1,751	11.2%	3,928	10.4%
Homes Built 1950 to 1959	1,245	24.7%	3,222	20.5%	6,973	18.5%
Homes Built Before 1949	1,807	35.9%	5,539	35.3%	15,626	41.4%

Home Values (2010)

Home Values \$1,000,000 or More	48	1.3%	130	1.2%	284	1.2%
Home Values \$500,000 to \$999,999	256	6.7%	662	5.9%	1,311	5.5%
Home Values \$400,000 to \$499,999	114	3.0%	337	3.0%	781	3.3%
Home Values \$300,000 to \$399,999	132	3.5%	442	3.9%	1,084	4.5%
Home Values \$200,000 to \$299,999	158	4.1%	917	8.2%	2,164	9.1%
Home Values \$150,000 to \$199,999	174	4.6%	1,106	9.9%	2,603	10.9%
Home Values \$100,000 to \$149,999	396	10.4%	1,750	15.6%	3,738	15.7%
Home Values \$70,000 to \$99,999	1,251	32.9%	2,689	24.0%	4,894	20.5%
Home Values \$50,000 to \$69,999	717	18.9%	1,689	15.1%	3,311	13.9%
Home Values \$25,000 to \$49,999	232	6.1%	751	6.7%	2,417	10.1%
Home Values Under \$25,000	325	8.5%	718	6.4%	1,271	5.3%
Owner-Occupied Median Home Value	\$81,678		\$102,876		\$106,820	
Renter-Occupied Median Rent	\$504		\$563		\$510	

Transportation To Work (2010)

Drive to Work Alone	4,187	81.7%	13,328	83.0%	29,926	80.1%
Drive to Work in Carpool	483	9.4%	1,327	8.3%	3,085	8.3%
Travel to Work by Public Transportation	189	3.7%	632	3.9%	1,751	4.7%
Drive to Work on Motorcycle	8	0.2%	15	0.1%	56	0.2%
Walk or Bicycle to Work	150	2.9%	382	2.4%	1,635	4.4%
Other Means	54	1.1%	111	0.7%	304	0.8%
Work at Home	53	1.0%	269	1.7%	624	1.7%

Travel Time (2010)

Travel to Work in 14 Minutes or Less	2,386	47.1%	6,733	42.6%	14,877	40.5%
Travel to Work in 15 to 29 Minutes	1,745	34.4%	5,912	37.4%	14,324	39.0%
Travel to Work in 30 to 59 Minutes	812	16.0%	2,804	17.7%	6,746	18.4%
Travel to Work in 60 Minutes or More	128	2.5%	347	2.2%	809	2.2%
Average Minutes Travel to Work	15.1		16.1		16.9	

This report was produced using data from private and government sources deemed to be reliable. The information herein is provided without representation or warranty.