

# COCCA DEVELOPMENT

## RETAIL SPACE FOR LEASE

**11651 STATE ROUTE 44**

MANTUA, OH 44255



- Next to Dollar General, Teresa's Pizza, Nationwide Insurance, & Best Friends Animal Clinic, with Cortland Bank on adjacent lot
- Wide frontage on tenant space; front wall sign plus large tenant pylon sign

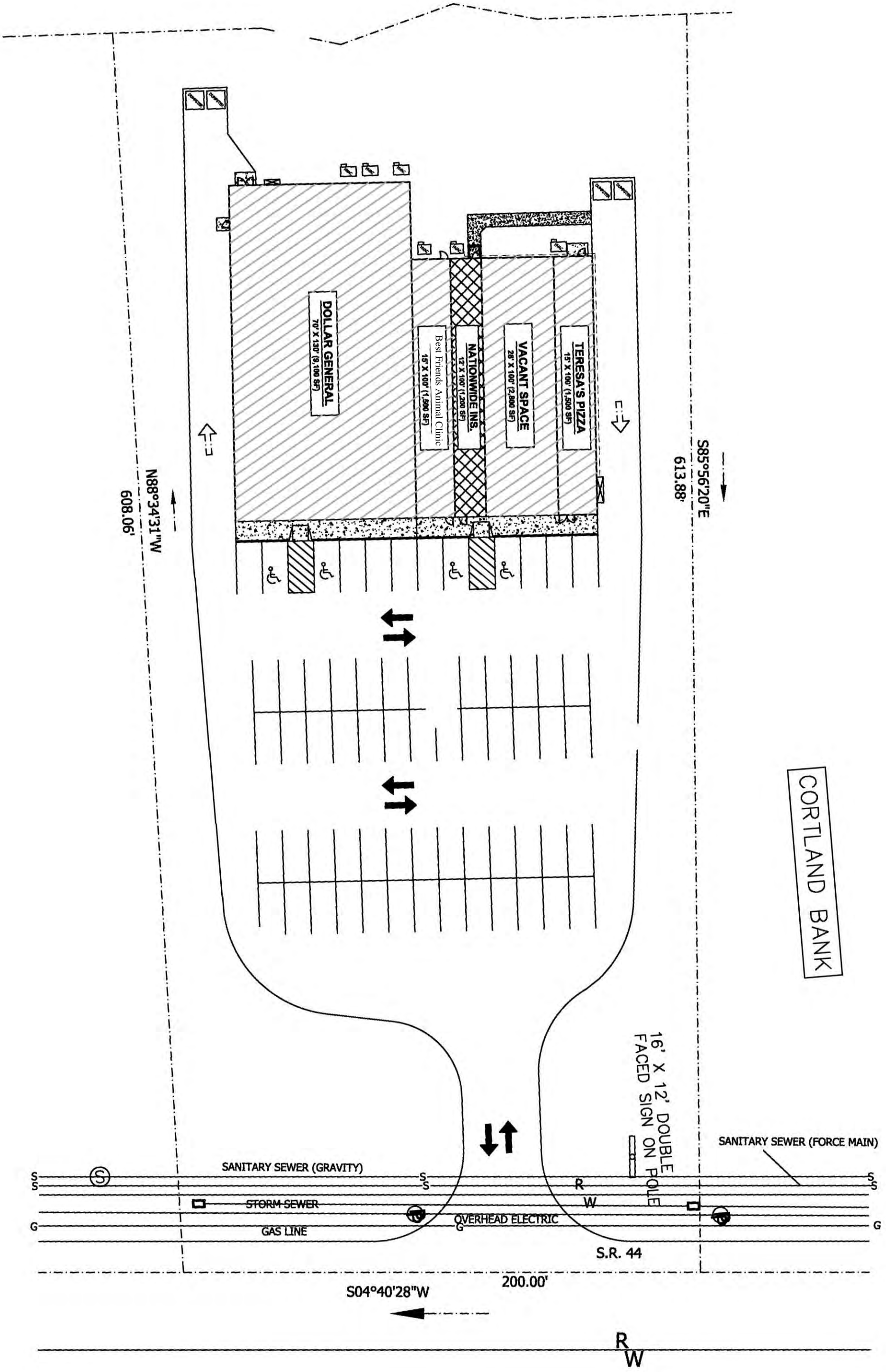
**AVAILABLE SUITE AREA—\$9/square foot NNN:**

Approximately 2,800 square feet

NNN: Base rent plus prorata share of Real Estate Taxes, Insurance, and Common Area expenses, including but not limited to snow removal, lawn care, and parking lot maintenance. Tenant pays separately metered utilities for gas, electric, water, sewer, & trash removal.

**CALL 330-729-1010 FOR MORE INFORMATION**

**[www.coccadevelopment.com](http://www.coccadevelopment.com)**



CORTLAND BANK

16' X 12' DOUBLE FACED SIGN ON POLE

SANITARY SEWER (FORCE MAIN)

SANITARY SEWER (GRAVITY)

STORM SEWER

GAS LINE

OVERHEAD ELECTRIC

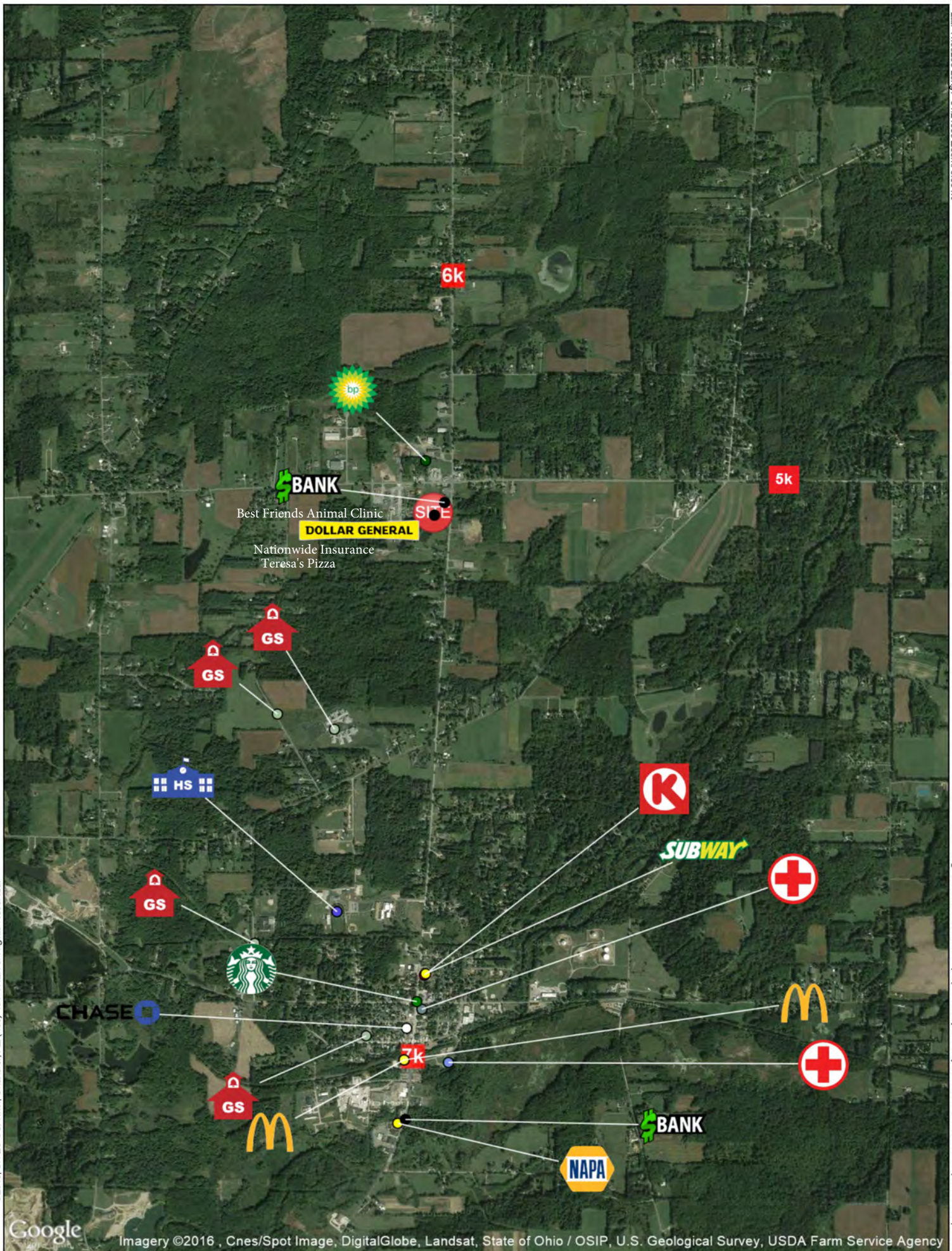
S.R. 44

S04°40'28"W

200.00'

R  
W







**11651 State Route 44**  
**Mantua, OH**  
 Current Year Estimated  
 Average Household Income



**Average HH Income**  
 By Blockgroups

	\$75,000 or more
	\$60,000 to \$75,000
	\$45,000 to \$60,000
	\$30,000 to \$45,000
	Less than \$30,000

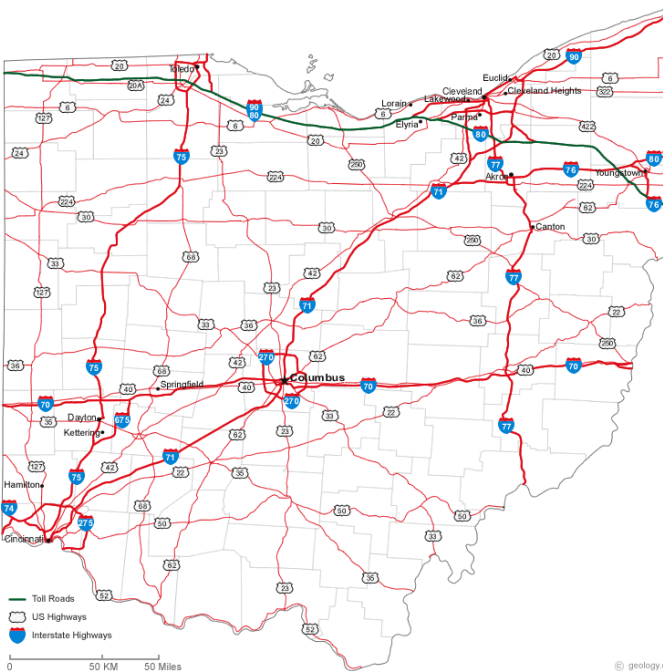
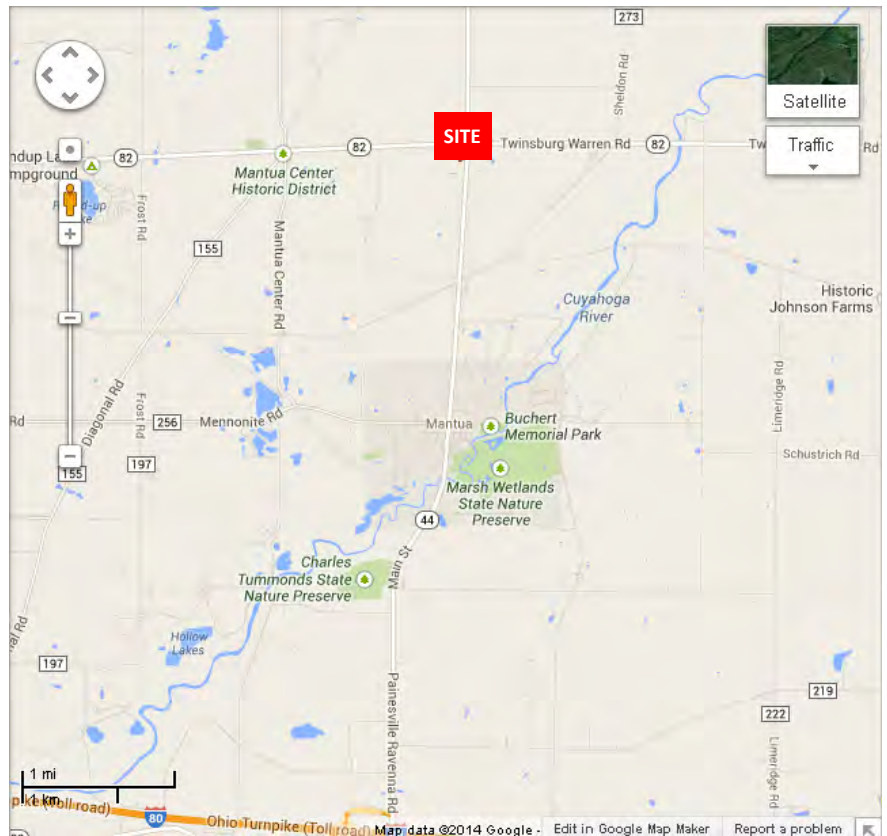
This map was produced using data from private and government sources deemed to be reliable. The information herein is provided without representation or warranty.

# 11651 State Route 44

# Mantua, OH 44255

The site is conveniently located on State Route 44, 5.5 miles south of Route 422, approximately 7 miles north of I-80.

It is just ten miles North of Ravenna (the Portage County Seat), 20 miles Northeast of Akron, and 27 miles Southeast of Cleveland.



Today, with access to the Ohio Turnpike just two miles to the South and access to US Route 422 seven miles to the North, it is believed this area will soon be the fastest-growing and most sought-after region in Northeast Ohio

# COCCA DEVELOPMENT, LTD

**11651 State Route 44**

**Mantua, OH 44255**

## **AT A GLANCE**

- ◆ Mantua is a village in Portage County. It was named after a famous city in Northern Italy and was formed from portions of Mantua Township in the Connecticut Western Reserve and is part of the Akron Metropolitan Statistical Area.
- ◆ The Cuyahoga River flows through the southern part of the village
- ◆ Mantua includes three properties on the National Register of Historic Places: the Horace L. Hine House, the Mantua Station Brick Commercial District, and the William H. Crafts House
- ◆ The village has hosted the Potato Festival annually over 30 years and an Ox Roast, a huge fundraiser for St. Joseph Church.
- ◆ Notable former residents include Brett Simon, internet icon and musician, and Jack Lambert, former Pittsburgh Steelers middle Linebacker who is enshrined in the Pro Football Hall of Fame.



# GRAPHIC PROFILE

2000-2010 Census, 2014 Estimates with 2019 Projections

Calculated using Proportional Block Groups

Lat/Lon: 41.3088/-81.2228

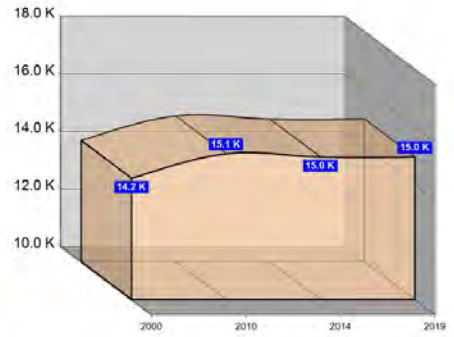
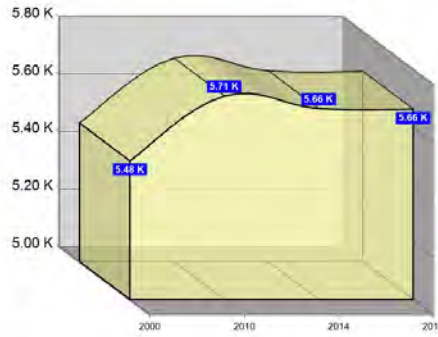
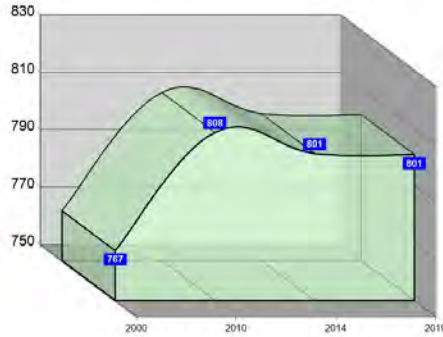
RGRAP3

## 11651 State Route 44

### Mantua, OH

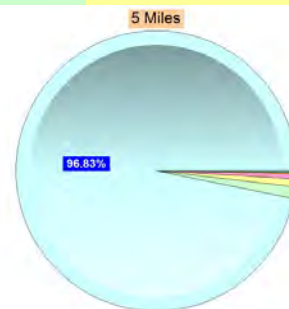
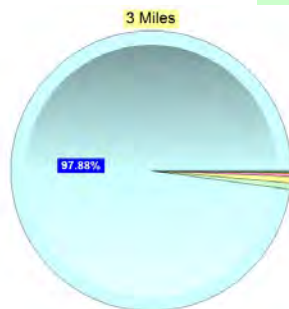
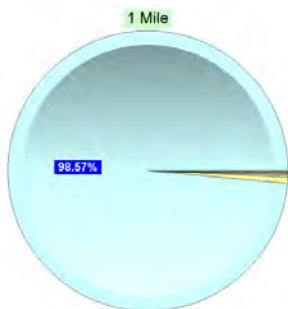
#### Population

	1 Mile	3 Miles	5 Miles
Estimated Population (2014)	801	5,664	14,955
Projected Population (2019)	801	5,662	14,958
Census Population (2010)	808	5,708	15,068
Census Population (2000)	767	5,482	14,218
Projected Annual Growth (2014-2019)	-	-2	3
Historical Annual Growth (2010-2014)	-7 1.3%	-44 1.0%	-113 1.4%
Historical Annual Growth (2000-2010)	41 0.5%	226 0.4%	851 0.6%
Estimated Population Density (2014)	255 <i>psm</i>	200 <i>psm</i>	191 <i>psm</i>
Trade Area Size	3.1 <i>sq mi</i>	28.3 <i>sq mi</i>	78.5 <i>sq mi</i>



#### Race and Ethnicity (2014)

	1 Mile	3 Miles	5 Miles
Not Hispanic or Latino Population	794 99.1%	5,610 99.1%	14,782 98.8%
White	784 98.7%	5,499 98.0%	14,344 97.0%
Black or African American	2 0.2%	41 0.7%	199 1.3%
American Indian or Alaska Native	1 0.2%	7 0.1%	17 0.1%
Asian	2 0.2%	22 0.4%	90 0.6%
Hawaiian or Pacific Islander	-	1	2
Other Race	-	1	6
Two or More Races	6 0.7%	39 0.7%	123 0.8%
Hispanic or Latino Population	7 0.9%	54 0.9%	173 1.2%
White	6 85.5%	44 82.7%	137 79.1%
Black or African American	-	- 0.3%	1 0.6%
American Indian or Alaska Native	-	1 1.2%	6 3.4%
Asian	-	- 0.3%	1 0.4%
Hispanic Hawaiian or Pacific Islander	-	-	-
Other Race	1 13.1%	6 11.5%	16 9.3%
Two or More Races	- 1.4%	2 4.0%	12 7.2%



White Black or African American American Indian or Alaska Native Asian Hawaiian or Pacific Islander Other Race 2+ Races

This report was produced using data from private and government sources deemed to be reliable. The information herein is provided without representation or warranty.

# GRAPHIC PROFILE

2000-2010 Census, 2014 Estimates with 2019 Projections

Calculated using Proportional Block Groups

Lat/Lon: 41.3088/-81.2228

RGRAP3

## 11651 State Route 44

### Mantua, OH

1 Mile

3 Miles

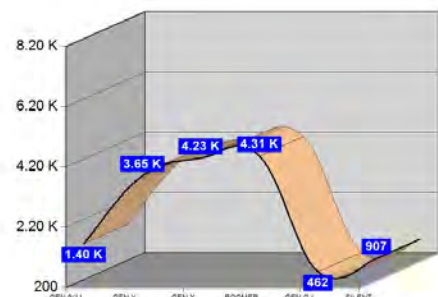
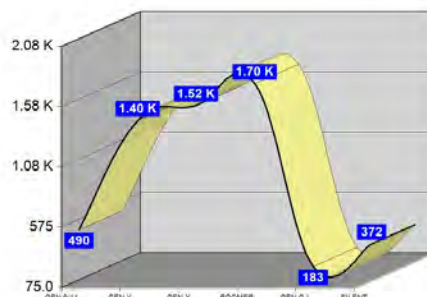
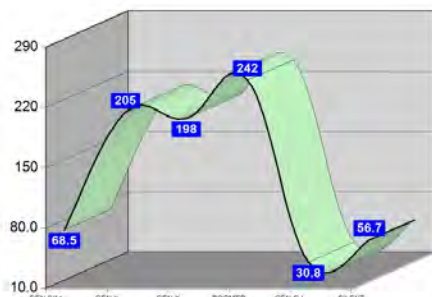
5 Miles

#### Age Distribution (2014)

	1 Mile	3 Miles	5 Miles
Age Under 5 Years	30 3.8%	227 4.0%	625 4.2%
Age 5 to 9 Years	38 4.8%	264 4.7%	770 5.2%
Age 10 to 14 Years	51 6.3%	335 5.9%	978 6.5%
Age 15 to 19 Years	61 7.6%	461 8.1%	1,279 8.6%
Age 20 to 24 Years	43 5.3%	412 7.3%	1,197 8.0%
Age 25 to 29 Years	43 5.4%	312 5.5%	780 5.2%
Age 30 to 34 Years	34 4.2%	249 4.4%	664 4.4%
Age 35 to 39 Years	41 5.1%	272 4.8%	728 4.9%
Age 40 to 44 Years	57 7.1%	382 6.7%	977 6.5%
Age 45 to 49 Years	73 9.1%	494 8.7%	1,281 8.6%
Age 50 to 54 Years	76 9.4%	539 9.5%	1,367 9.1%
Age 55 to 59 Years	69 8.6%	486 8.6%	1,220 8.2%
Age 60 to 64 Years	56 6.9%	382 6.7%	964 6.4%
Age 65 to 69 Years	42 5.2%	295 5.2%	755 5.1%
Age 70 to 74 Years	32 4.1%	219 3.9%	527 3.5%
Age 75 to 79 Years	24 3.0%	153 2.7%	381 2.5%
Age 80 to 84 Years	14 1.8%	85 1.5%	221 1.5%
Age 85 Years or Over	17 2.1%	98 1.7%	241 1.6%
Median Age	44.1	42.0	40.2

#### Generation (2014)

	1 Mile	3 Miles	5 Miles
Generation 9/11 Millennials (Age Under 10 Years)	69 8.6%	490 8.7%	1,395 9.3%
Gen Y to Echo Boomers (Age 10 to 29 Years)	198 24.7%	1,519 26.8%	4,234 28.3%
Gen Xers (Age 30 to 49 Years)	205 25.6%	1,397 24.7%	3,649 24.4%
Baby Boomers (Age 50 to 69 Years)	242 30.2%	1,702 30.1%	4,307 28.8%
Silent Generation (Age 70 to 79 Years)	57 7.1%	372 6.6%	907 6.1%
G.I. Generation (Age 80 Years or Over)	31 3.8%	183 3.2%	462 3.1%



This report was produced using data from private and government sources deemed to be reliable. The information herein is provided without representation or warranty.



# GRAPHIC PROFILE

2000-2010 Census, 2014 Estimates with 2019 Projections

Calculated using Proportional Block Groups

Lat/Lon: 41.3088/-81.2228

RGRAP3

## 11651 State Route 44 Mantua, OH

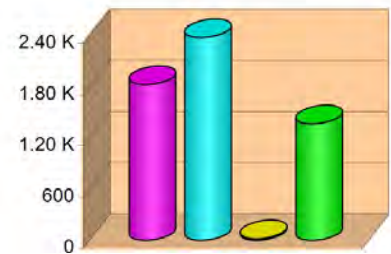
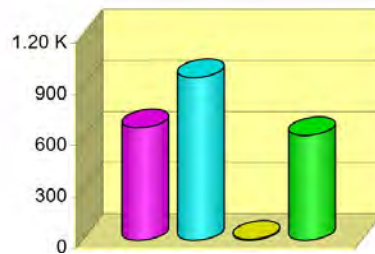
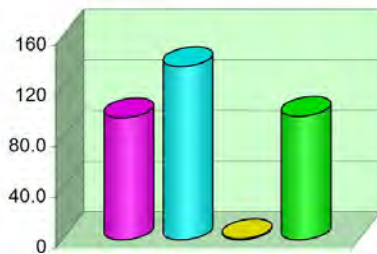
1 Mile

3 Miles

5 Miles

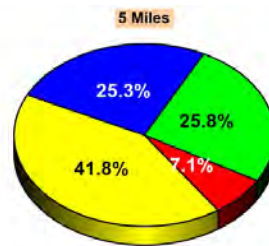
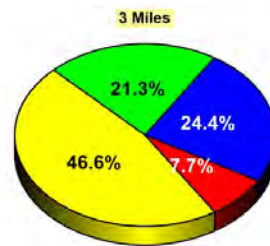
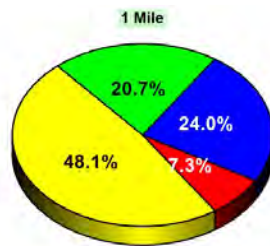
### Household Type (2014)

	1 Mile	3 Miles	5 Miles
Total Households	332	2,234	5,588
Family Households	233 41.3%	1,614 42.7%	4,203 42.5%
Family Households with Children	96 41.3%	659 40.9%	1,826 43.4%
Family Households No Children	137 58.7%	954 59.1%	2,377 56.6%
Non-Family Households	98 41.3%	621 42.7%	1,385 42.5%
Non-Family Households with Children	1 0.9%	6 0.9%	18 1.3%
Non-Family Households No Children	98 99.1%	615 99.1%	1,367 98.7%



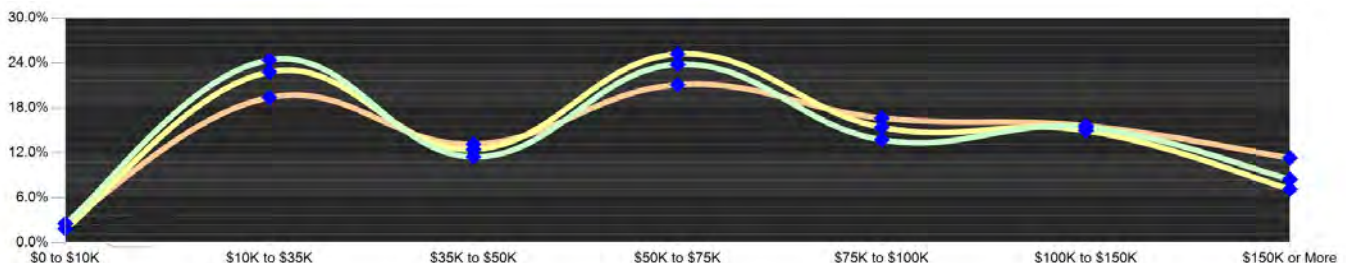
### Education Attainment (2014)

	1 Mile	3 Miles	5 Miles
Elementary or Some High School	42 7.3%	304 7.7%	711 7.1%
High School Graduate	278 48.1%	1,843 46.6%	4,187 41.8%
Some College or Associate Degree	139 24.0%	965 24.4%	2,532 25.8%
Bachelor or Graduate Degree	119 20.7%	842 21.3%	2,583 25.8%



### Household Income (2014)

	1 Mile	3 Miles	5 Miles
Estimated Average Household Income	\$68,198	\$66,958	\$75,512
Estimated Median Household Income	\$57,133	\$56,404	\$61,635
HH Income Under \$10,000	8 2.6%	41 1.9%	145 2.6%
HH Income \$10,000 to \$34,999	81 24.4%	510 22.8%	1,085 19.4%
HH Income \$35,000 to \$49,999	38 11.5%	279 12.5%	737 13.2%
HH Income \$50,000 to \$74,999	79 23.8%	564 25.2%	1,180 21.1%
HH Income \$75,000 to \$99,999	51 15.4%	335 15.0%	875 15.7%
HH Income \$100,000 to \$149,999	51 15.4%	335 15.0%	875 15.7%
HH Income \$150,000 or More	28 8.5%	160 7.2%	634 11.3%



This report was produced using data from private and government sources deemed to be reliable. The information herein is provided without representation or warranty.

# EXPANDED PROFILE

2000-2010 Census, 2014 Estimates with 2019 Projections

Calculated using Proportional Block Groups

Lat/Lon: 41.3088/-81.2228

RF5

## 11651 State Route 44

### Mantua, OH

#### Population

	1 Mile	3 Miles	5 Miles
Estimated Population (2014)	801	5,664	14,955
Projected Population (2019)	801	5,662	14,958
Census Population (2010)	808	5,708	15,068
Census Population (2000)	767	5,482	14,218
Projected Annual Growth (2014 to 2019)	-	-2	3
Historical Annual Growth (2010 to 2014)	-7 -0.2%	-44 -0.2%	-113 -0.2%
Historical Annual Growth (2000 to 2010)	41 0.5%	226 0.4%	851 0.6%
Estimated Population Density (2014)	255 <i>psm</i>	200 <i>psm</i>	191 <i>psm</i>
Trade Area Size	3.14 <i>sq mi</i>	28.26 <i>sq mi</i>	78.49 <i>sq mi</i>

#### Households

Estimated Households (2014)	332	2,234	5,588
Projected Households (2019)	348	2,344	5,851
Census Households (2010)	320	2,158	5,407
Census Households (2000)	293	1,988	4,920
Estimated Households with Children (2014)	97 29.3%	665 29.8%	1,844 33.0%
Estimated Average Household Size (2014)	2.41	2.45	2.54

#### Average Household Income

Estimated Average Household Income (2014)	\$70,596	\$70,422	\$81,754
Projected Average Household Income (2019)	\$76,672	\$76,471	\$88,847
Estimated Average Family Income (2014)	\$80,302	\$78,526	\$89,299

#### Median Household Income

Estimated Median Household Income (2014)	\$58,876	\$60,301	\$69,284
Projected Median Household Income (2019)	\$62,665	\$64,277	\$74,479
Estimated Median Family Income (2014)	\$71,742	\$71,167	\$79,719

#### Per Capita Income

Estimated Per Capita Income (2014)	\$29,244	\$27,913	\$30,777
Projected Per Capita Income (2019)	\$33,348	\$31,812	\$35,013
Estimated Per Capita income 5 Year Growth	\$4,103 14.0%	\$3,899 14.0%	\$4,235 13.8%
Estimated Average Household Net Worth (2014)	\$562,427	\$531,499	\$581,483

#### Daytime Demos (2014)

Total Businesses	40	214	476
Total Employees	292	1,529	4,202
Company Headquarter Businesses	-	-	1 0.3%
Company Headquarter Employees	-	-	168 4.0%
Employee Population per Business	7.4	7.1	8.8
Residential Population per Business	20.2	26.5	31.4

This report was produced using data from private and government sources deemed to be reliable. The information herein is provided without representation or warranty.



# EXPANDED PROFILE

2000-2010 Census, 2014 Estimates with 2019 Projections

Calculated using Proportional Block Groups

Lat/Lon: 41.3088/-81.2228

RF5

11651 State Route 44 Mantua, OH	1 Mile		3 Miles		5 Miles	
<b>Race &amp; Ethnicity</b>						
White (2014)	790	98.6%	5,544	97.9%	14,481	96.8%
Black or African American (2014)	2	0.2%	41	0.7%	200	1.3%
American Indian or Alaska Native (2014)	1	0.2%	8	0.1%	23	0.2%
Asian (2014)	2	0.2%	22	0.4%	91	0.6%
Hawaiian or Pacific Islander (2014)	-	-	1	-	3	-
Other Race (2014)	1	0.1%	7	0.1%	22	0.1%
Two or More Races (2014)	6	0.7%	41	0.7%	136	0.9%
Not Hispanic or Latino Population (2014)	794	99.1%	5,610	99.1%	14,782	98.8%
Hispanic or Latino Population (2014)	7	0.9%	54	0.9%	173	1.2%
Not Hispanic or Latino Population (2019)	793	99.0%	5,602	98.9%	14,763	98.7%
Hispanic or Latino Population (2019)	8	1.0%	60	1.1%	194	1.3%
Not Hispanic or Latino Population (2010)	803	99.3%	5,662	99.2%	14,920	99.0%
Hispanic or Latino Population (2010)	6	0.7%	46	0.8%	148	1.0%
Not Hispanic or Latino Population (2000)	763	99.5%	5,446	99.3%	14,123	99.3%
Hispanic or Latino Population (2000)	4	0.5%	36	0.7%	95	0.7%
Projected Hispanic Annual Growth (2014 to 2019)	1	2.6%	7	2.5%	22	2.5%
Historic Hispanic Annual Growth (2000 to 2014)	3	4.8%	18	3.6%	78	5.8%
<b>Age Distribution (2014)</b>						
Age Under 5	30	3.8%	227	4.0%	625	4.2%
Age 5 to 9 Years	38	4.8%	264	4.7%	770	5.2%
Age 10 to 14 Years	51	6.3%	335	5.9%	978	6.5%
Age 15 to 19 Years	61	7.6%	461	8.1%	1,279	8.6%
Age 20 to 24 Years	43	5.3%	412	7.3%	1,197	8.0%
Age 25 to 29 Years	43	5.4%	312	5.5%	780	5.2%
Age 30 to 34 Years	34	4.2%	249	4.4%	664	4.4%
Age 35 to 39 Years	41	5.1%	272	4.8%	728	4.9%
Age 40 to 44 Years	57	7.1%	382	6.7%	977	6.5%
Age 45 to 49 Years	73	9.1%	494	8.7%	1,281	8.6%
Age 50 to 54 Years	76	9.4%	539	9.5%	1,367	9.1%
Age 55 to 59 Years	69	8.6%	486	8.6%	1,220	8.2%
Age 60 to 64 Years	56	6.9%	382	6.7%	964	6.4%
Age 65 to 74 Years	74	9.3%	514	9.1%	1,282	8.6%
Age 75 to 84 Years	38	4.8%	237	4.2%	602	4.0%
Age 85 Years or Over	17	2.1%	98	1.7%	241	1.6%
Median Age	44.1		42.0		40.2	
<b>Gender Age Distribution (2014)</b>						
Female Population	403	50.3%	2,830	50.0%	7,463	49.9%
Age 0 to 19 Years	87	21.7%	634	22.4%	1,782	23.9%
Age 20 to 64 Years	241	59.9%	1,732	61.2%	4,545	60.9%
Age 65 Years or Over	74	18.4%	464	16.4%	1,136	15.2%
Female Median Age	45.0		42.6		40.8	
Male Population	398	49.7%	2,834	50.0%	7,492	50.1%
Age 0 to 19 Years	93	23.4%	652	23.0%	1,870	25.0%
Age 20 to 64 Years	250	62.8%	1,796	63.4%	4,633	61.8%
Age 65 Years or Over	55	13.8%	386	13.6%	989	13.2%
Male Median Age	43.0		41.3		39.6	

This report was produced using data from private and government sources deemed to be reliable. The information herein is provided without representation or warranty.

# EXPANDED PROFILE

2000-2010 Census, 2014 Estimates with 2019 Projections

Calculated using Proportional Block Groups

Lat/Lon: 41.3088/-81.2228

RF5

11651 State Route 44 Mantua, OH	1 Mile		3 Miles		5 Miles	
<b>Household Income Distribution (2014)</b>						
HH Income \$200,000 or More	4	1.2%	36	1.6%	280	5.0%
HH Income \$150,000 to \$199,999	24	7.3%	124	5.6%	354	6.3%
HH Income \$100,000 to \$149,999	51	15.4%	335	15.0%	875	15.7%
HH Income \$75,000 to \$99,999	46	13.8%	345	15.4%	932	16.7%
HH Income \$50,000 to \$74,999	79	23.8%	564	25.2%	1,180	21.1%
HH Income \$35,000 to \$49,999	38	11.5%	279	12.5%	737	13.2%
HH Income \$25,000 to \$34,999	41	12.5%	278	12.4%	597	10.7%
HH Income \$15,000 to \$24,999	28	8.3%	174	7.8%	376	6.7%
HH Income Under \$15,000	21	6.2%	100	4.5%	258	4.6%
HH Income \$35,000 or More	242	73.0%	1,683	75.3%	4,358	78.0%
HH Income \$75,000 or More	125	37.7%	840	37.6%	2,441	43.7%
<b>Housing (2014)</b>						
Total Housing Units	344		2,320		5,817	
Housing Units Occupied	332	96.5%	2,234	96.3%	5,588	96.1%
Housing Units Owner-Occupied	256	77.2%	1,822	81.6%	4,761	85.2%
Housing Units, Renter-Occupied	76	22.8%	412	18.4%	827	14.8%
Housing Units, Vacant	12	3.5%	86	3.7%	229	3.9%
<b>Marital Status (2014)</b>						
Never Married	171	25.1%	1,338	27.7%	3,608	28.7%
Currently Married	393	57.6%	2,665	55.1%	7,000	55.6%
Separated	16	2.3%	106	2.2%	279	2.2%
Widowed	36	5.2%	238	4.9%	572	4.5%
Divorced	67	9.8%	491	10.1%	1,122	8.9%
<b>Household Type (2014)</b>						
Population Family	669	83.6%	4,629	81.7%	12,268	82.0%
Population Non-Family	131	16.4%	847	14.9%	1,940	13.0%
Population Group Quarters	-	-	188	3.3%	747	5.0%
Family Households	233	70.3%	1,614	72.2%	4,203	75.2%
Non-Family Households	98	29.7%	621	27.8%	1,385	24.8%
Married Couple with Children	69	17.5%	489	18.3%	1,407	20.1%
Average Family Household Size	2.9		2.9		2.9	
<b>Household Size (2014)</b>						
1 Person Households	79	23.8%	494	22.1%	1,097	19.6%
2 Person Households	124	37.3%	833	37.3%	2,063	36.9%
3 Person Households	54	16.4%	384	17.2%	979	17.5%
4 Person Households	44	13.2%	314	14.1%	866	15.5%
5 Person Households	18	5.4%	131	5.8%	381	6.8%
6 or More Person Households	13	3.9%	78	3.5%	203	3.6%
<b>Household Vehicles (2014)</b>						
Households with 0 Vehicles Available	8	2.5%	44	2.0%	125	2.2%
Households with 1 Vehicles Available	84	25.3%	569	25.5%	1,279	22.9%
Households with 2 or More Vehicles Available	240	72.2%	1,621	72.5%	4,185	74.9%
Total Vehicles Available	718		4,871		12,502	
Average Vehicles Per Household	2.2		2.2		2.2	

This report was produced using data from private and government sources deemed to be reliable. The information herein is provided without representation or warranty.



# EXPANDED PROFILE

2000-2010 Census, 2014 Estimates with 2019 Projections

Calculated using Proportional Block Groups

Lat/Lon: 41.3088/-81.2228

RF5

## 11651 State Route 44

### Mantua, OH

#### Labor Force (2014)

	1 Mile	3 Miles	5 Miles
Estimated Labor Population Age 16 Years or Over	672	4,590	11,664
Estimated Civilian Employed	460 68.4%	3,120 68.0%	7,635 65.5%
Estimated Civilian Unemployed	26 3.9%	187 4.1%	479 4.1%
Estimated in Armed Forces	- -	- -	7 0.1%
Estimated Not in Labor Force	186 27.7%	1,282 27.9%	3,543 30.4%
Unemployment Rate	3.9%	4.1%	4.1%

#### Occupation (2010)

	1 Mile	3 Miles	5 Miles
Occupation: Population Age 16 Years or Over	428	3,032	7,597
Management, Business, Financial Operations	59 13.9%	395 13.0%	1,037 13.7%
Professional, Related	67 15.6%	514 16.9%	1,418 18.7%
Service	65 15.1%	481 15.9%	1,207 15.9%
Sales, Office	135 31.5%	889 29.3%	1,993 26.2%
Farming, Fishing, Forestry	- -	1 -	2 -
Construct, Extraction, Maintenance	41 9.7%	310 10.2%	839 11.0%
Production, Transport Material Moving	61 14.2%	442 14.6%	1,101 14.5%
White Collar Workers	261 61.0%	1,798 59.3%	4,448 58.6%
Blue Collar Workers	167 39.0%	1,234 40.7%	3,149 41.4%

#### Consumer Expenditure (2014)

	1 Mile	3 Miles	5 Miles
Total Household Expenditure	\$18.4 M	\$123 M	\$338 M
Total Non-Retail Expenditure	\$10.6 M 57.6%	\$71.1 M 57.6%	\$195 M 57.8%
Total Retail Expenditure	\$7.81 M 42.4%	\$52.2 M 42.4%	\$143 M 42.2%
Apparel	\$882 K 4.8%	\$5.89 M 4.8%	\$16.2 M 4.8%
Contributions	\$693 K 3.8%	\$4.58 M 3.7%	\$13.4 M 3.9%
Education	\$437 K 2.4%	\$2.87 M 2.3%	\$8.39 M 2.5%
Entertainment	\$1.03 M 5.6%	\$6.93 M 5.6%	\$19.1 M 5.6%
Food and Beverages	\$2.81 M 15.2%	\$18.8 M 15.3%	\$50.9 M 15.1%
Furnishings and Equipment	\$813 K 4.4%	\$5.46 M 4.4%	\$15.2 M 4.5%
Gifts	\$494 K 2.7%	\$3.27 M 2.7%	\$9.33 M 2.8%
Health Care	\$1.12 M 6.1%	\$7.50 M 6.1%	\$20.1 M 5.9%
Household Operations	\$666 K 3.6%	\$4.43 M 3.6%	\$12.6 M 3.7%
Miscellaneous Expenses	\$305 K 1.7%	\$2.05 M 1.7%	\$5.52 M 1.6%
Personal Care	\$266 K 1.4%	\$1.78 M 1.4%	\$4.86 M 1.4%
Personal Insurance	\$190 K 1.0%	\$1.26 M 1.0%	\$3.62 M 1.1%
Reading	\$60.7 K 0.3%	\$405 K 0.3%	\$1.11 M 0.3%
Shelter	\$3.56 M 19.4%	\$23.8 M 19.3%	\$65.6 M 19.4%
Tobacco	\$117 K 0.6%	\$786 K 0.6%	\$2.04 M 0.6%
Transportation	\$3.71 M 20.1%	\$25.0 M 20.3%	\$67.5 M 20.0%
Utilities	\$1.27 M 6.9%	\$8.50 M 6.9%	\$22.8 M 6.7%

#### Educational Attainment (2014)

	1 Mile	3 Miles	5 Miles
Adult Population Age 25 Years or Over	578	3,954	10,014
Elementary (Grade Level 0 to 8)	7 1.3%	51 1.3%	120 1.2%
Some High School (Grade Level 9 to 11)	35 6.0%	252 6.4%	592 5.9%
High School Graduate	278 48.1%	1,843 46.6%	4,187 41.8%
Some College	110 19.1%	772 19.5%	1,930 19.3%
Associate Degree Only	28 4.9%	193 4.9%	602 6.0%
Bachelor Degree Only	90 15.5%	616 15.6%	1,745 17.4%
Graduate Degree	30 5.2%	225 5.7%	838 8.4%

This report was produced using data from private and government sources deemed to be reliable. The information herein is provided without representation or warranty.

# EXPANDED PROFILE

2000-2010 Census, 2014 Estimates with 2019 Projections

Calculated using Proportional Block Groups

Lat/Lon: 41.3088/-81.2228

RF5

11651 State Route 44 Mantua, OH	1 Mile		3 Miles		5 Miles	
<b>Units In Structure (2010)</b>						
1 Detached Unit	272	85.0%	1,835	85.1%	4,667	86.3%
1 Attached Unit	3	0.8%	39	1.8%	136	2.5%
2 to 4 Units	34	10.7%	141	6.5%	182	3.4%
5 to 9 Units	7	2.1%	28	1.3%	49	0.9%
10 to 19 Units	1	0.2%	5	0.2%	18	0.3%
20 to 49 Units	-	0.1%	1	-	18	0.3%
50 or More Units	-	0.1%	1	0.1%	43	0.8%
Mobile Home or Trailer	4	1.1%	107	4.9%	293	5.4%
Other Structure	-	-	-	-	-	-
<b>Homes Built By Year (2010)</b>						
Homes Built 2005 or later	8	2.6%	55	2.6%	218	4.0%
Homes Built 2000 to 2004	14	4.4%	107	5.0%	343	6.3%
Homes Built 1990 to 1999	35	11.0%	248	11.5%	880	16.3%
Homes Built 1980 to 1989	22	6.7%	189	8.8%	535	9.9%
Homes Built 1970 to 1979	70	21.8%	482	22.3%	977	18.1%
Homes Built 1960 to 1969	33	10.3%	253	11.7%	706	13.1%
Homes Built 1950 to 1959	57	17.7%	357	16.5%	744	13.8%
Homes Built Before 1949	82	25.6%	468	21.7%	1,004	18.6%
<b>Home Values (2010)</b>						
Home Values \$1,000,000 or More	2	0.6%	20	1.1%	46	1.0%
Home Values \$500,000 to \$999,999	4	1.5%	33	1.9%	172	3.7%
Home Values \$400,000 to \$499,999	4	1.7%	37	2.1%	134	2.9%
Home Values \$300,000 to \$399,999	16	6.7%	112	6.4%	453	9.8%
Home Values \$200,000 to \$299,999	71	28.7%	501	28.5%	1,259	27.3%
Home Values \$150,000 to \$199,999	54	21.9%	376	21.4%	876	19.0%
Home Values \$100,000 to \$149,999	60	24.2%	354	20.1%	865	18.8%
Home Values \$70,000 to \$99,999	21	8.7%	149	8.5%	363	7.9%
Home Values \$50,000 to \$69,999	5	2.1%	37	2.1%	101	2.2%
Home Values \$25,000 to \$49,999	3	1.1%	15	0.9%	64	1.4%
Home Values Under \$25,000	7	3.0%	124	7.1%	273	5.9%
Owner-Occupied Median Home Value	\$173,178		\$174,456		\$191,655	
Renter-Occupied Median Rent	\$503		\$513		\$648	
<b>Transportation To Work (2010)</b>						
Drive to Work Alone	400	94.0%	2,683	89.5%	6,431	86.1%
Drive to Work in Carpool	17	4.1%	177	5.9%	474	6.4%
Travel to Work by Public Transportation	-	0.1%	13	0.4%	28	0.4%
Drive to Work on Motorcycle	-	-	-	-	-	-
Walk or Bicycle to Work	1	0.3%	49	1.6%	194	2.6%
Other Means	-	0.1%	3	0.1%	11	0.2%
Work at Home	6	1.5%	72	2.4%	331	4.4%
<b>Travel Time (2010)</b>						
Travel to Work in 14 Minutes or Less	102	24.2%	718	24.6%	1,735	24.3%
Travel to Work in 15 to 29 Minutes	146	34.8%	1,017	34.8%	2,439	34.2%
Travel to Work in 30 to 59 Minutes	157	37.5%	1,074	36.7%	2,619	36.7%
Travel to Work in 60 Minutes or More	15	3.5%	114	3.9%	346	4.8%
Average Minutes Travel to Work	24.1		24.0		24.1	

This report was produced using data from private and government sources deemed to be reliable. The information herein is provided without representation or warranty.