

# COCCA DEVELOPMENT

## RETAIL SPACE FOR LEASE

**1899 EAST STATE STREET**

HERMITAGE, PA 16148



- Formerly Medicine Shoppe
- Easy ingress/egress onto East State Street
- Home to Buhl Park and just up the road from Daffin's Chocolates as well as Philadelphia Candies, two large candy makers in the area

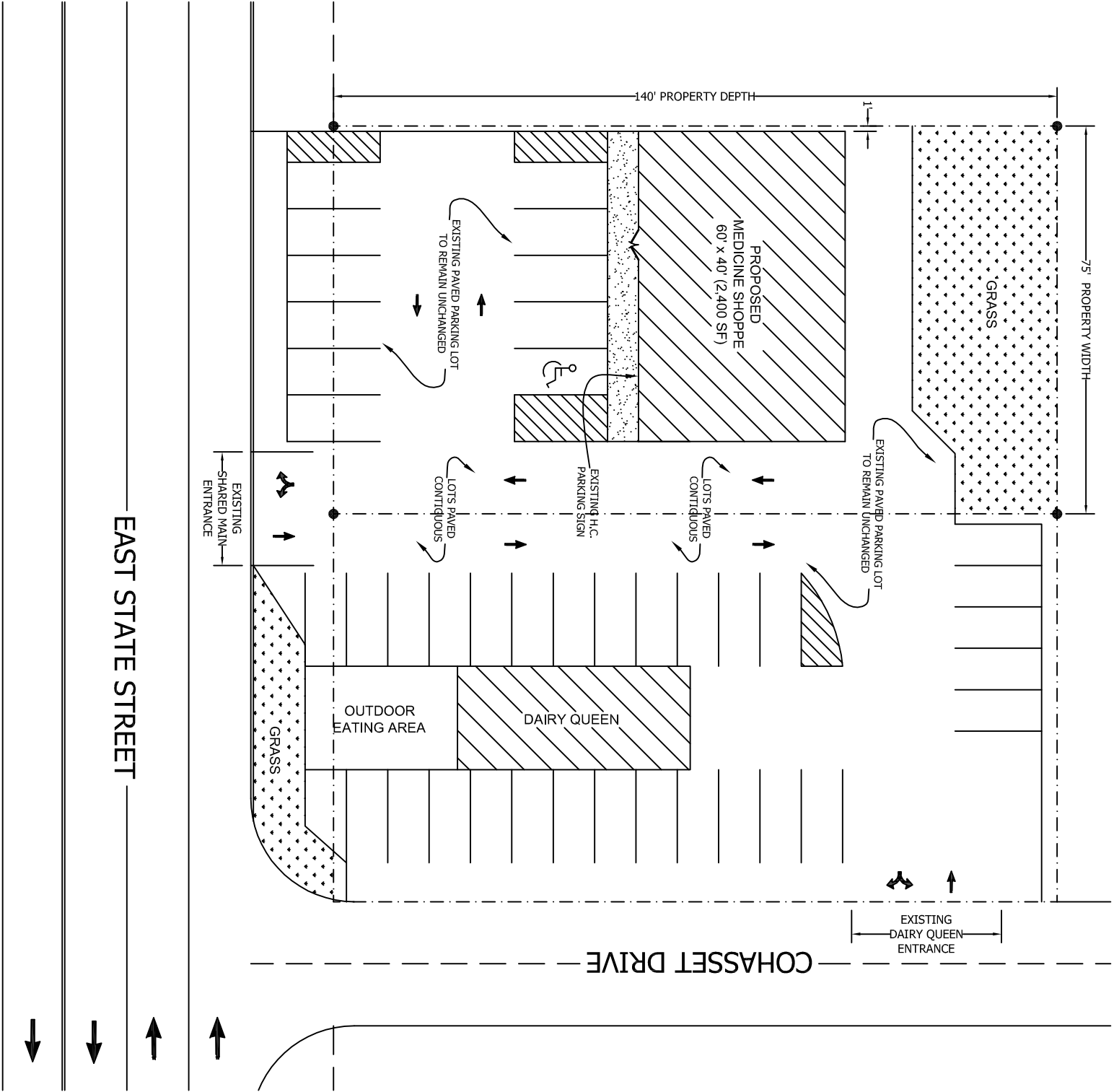
**AVAILABLE SUITE AREA—\$13.50/square foot NN (self CAM):**

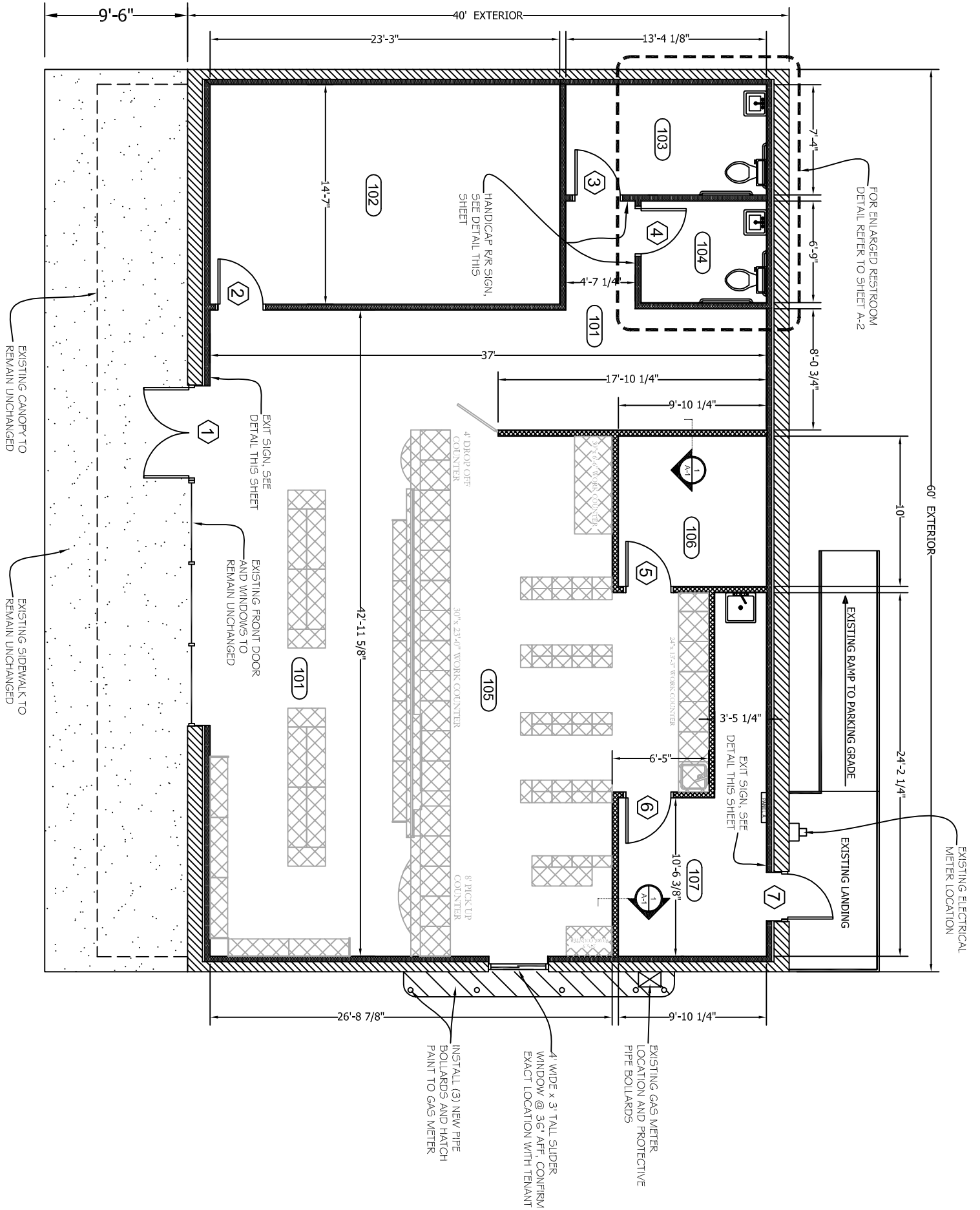
Approximately 2,400 sq ft available

NN: Base rent plus prorata share of Real Estate Taxes, and Insurance. Tenant responsible for own CAM including but not limited to snow removal, parking lot, and exterior clean up. Tenant pays separately metered utilities for gas, electric, water, sewer, & trash removal.

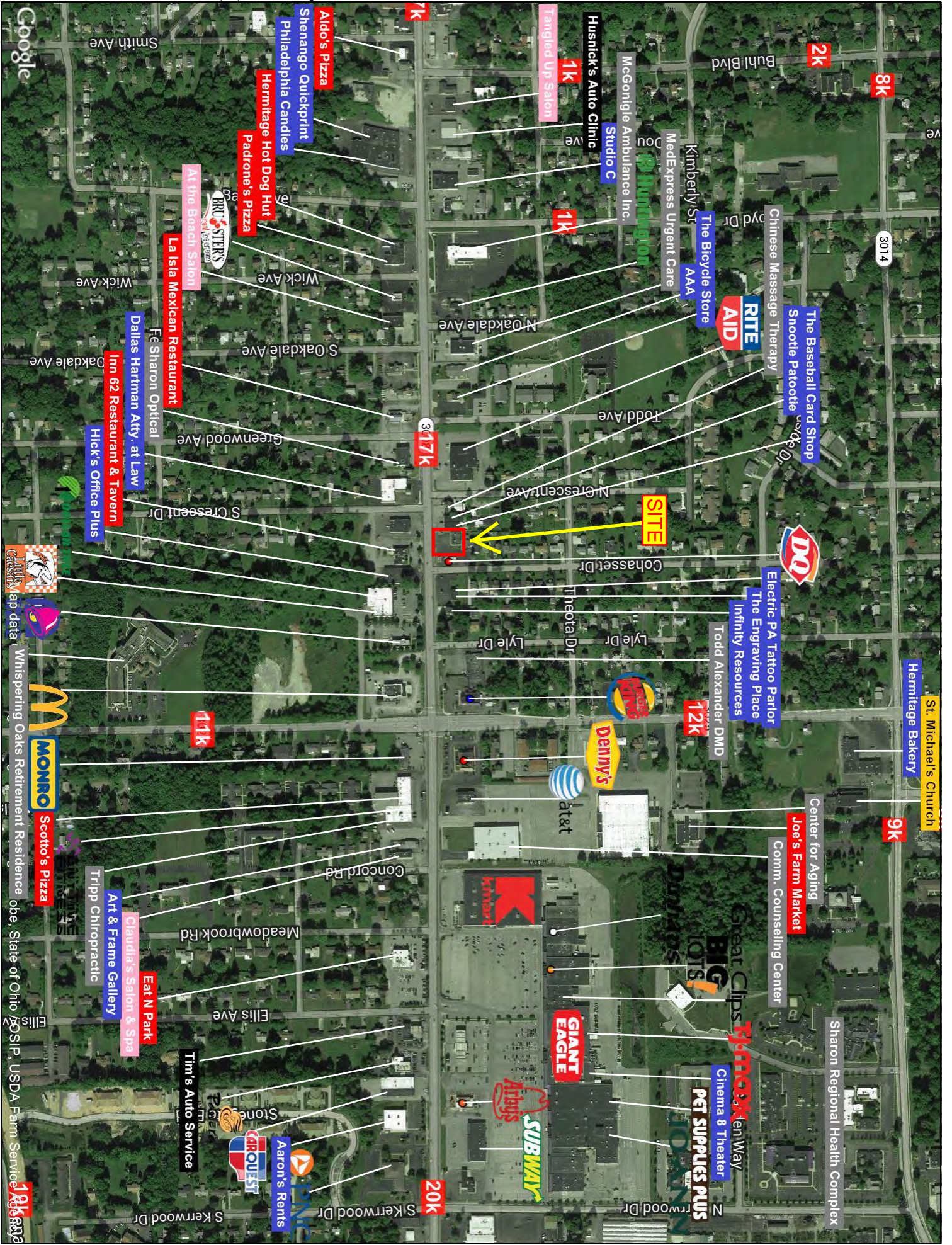
**CALL 330-729-1010 FOR MORE INFORMATION**

**[www.coccadevelopment.com](http://www.coccadevelopment.com)**









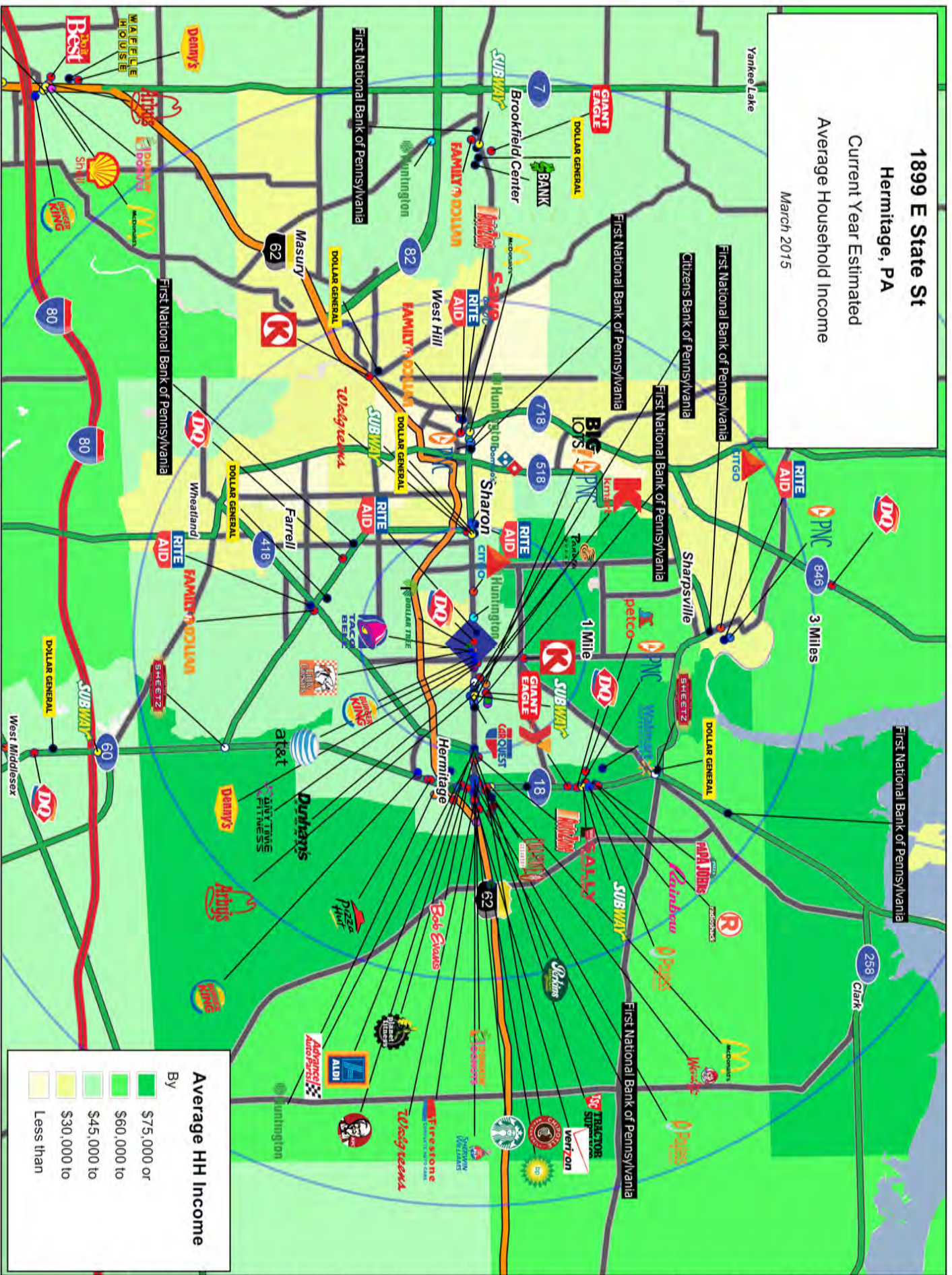
This map was produced using data from private and government sources deemed to be reliable. The information herein is provided without representation or warranty.





**1899 E State St**  
**Hermitage, PA**  
 Current Year Estimated  
 Average Household Income

March 2015



**Average HH Income**

By

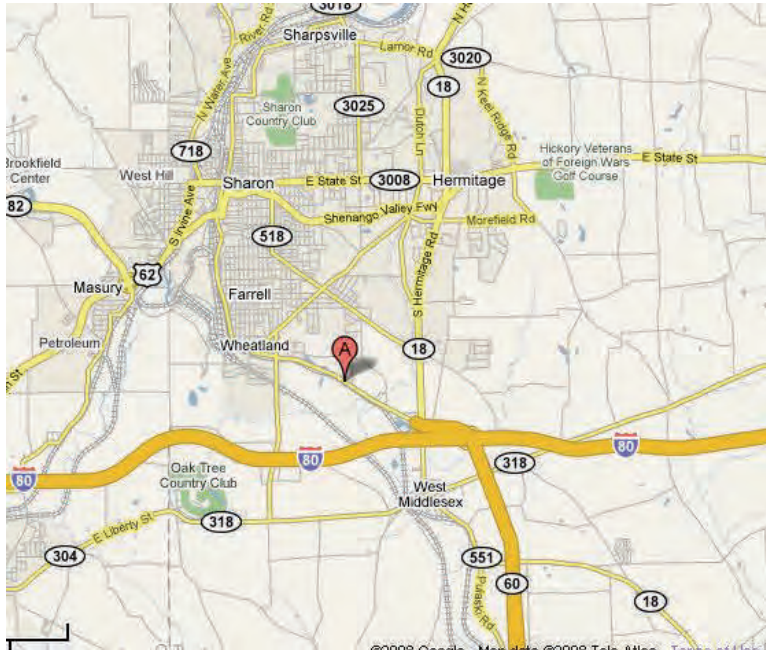
- \$75,000 or more
- \$60,000 to \$74,999
- \$45,000 to \$59,999
- \$30,000 to \$44,999
- Less than \$29,999

This map was produced using data from private and government sources deemed to be reliable. The information herein is provided without representation or warranty.



# 1899 East State Street

# Hermitage, PA 16148



This property is located approximately 7 miles off of US-62. Some of the largest cities nearby are Sharon (1.4 miles), Youngstown (13.6 miles), and Akron (56.2 miles).

Hermitage is nestled in western Pennsylvania midway between Pittsburgh, Erie, Chicago and New York City, at the junction of Interstates 79 and 80.



# COCCA DEVELOPMENT, LTD

**1899 East State Street Hermitage, PA 16148**

## **AT A GLANCE**

- ◆ Hermitage is a city in Mercer County, Pennsylvania and was first settled in 1796 and incorporated in 1832
- ◆ The Shenango River north of Hermitage is run by the US Army Corps of Engineers
- ◆ Credit Donkey (popular credit card comparison and financial education website) named The City of Hermitage the best city to live in Pennsylvania
- ◆ Home to Buhl Park, a beautiful 380 acre recreational facility with pool, picnic areas, tennis, trails, playgrounds, 9 hole golf course and more
- ◆ Some of the many nearby attractions include the Premium Outlets Grove City, Reyers, Kraynaks, 12 public golf courses and 4 lakes for fishing and boating.



# GRAPHIC PROFILE

2000-2010 Census, 2014 Estimates with 2019 Projections

Calculated using Proportional Block Groups

Lat/Lon: 41.2334/-80.4747

RGRAP3

## 1899 E State St

## Hermitage, PA

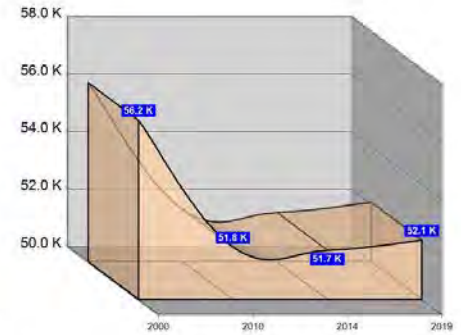
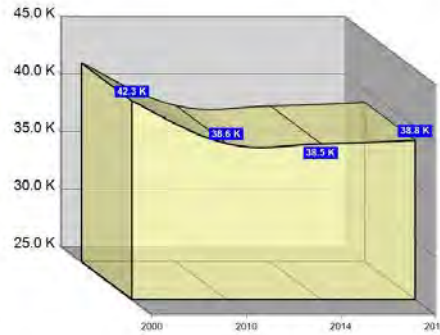
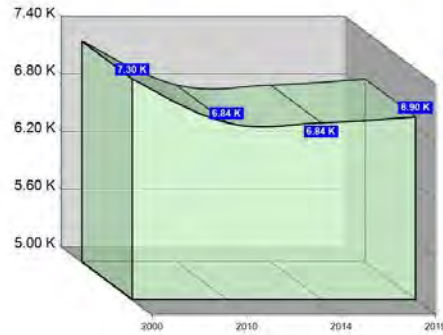
1 Mile

3 Miles

5 Miles

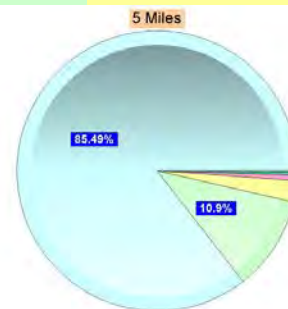
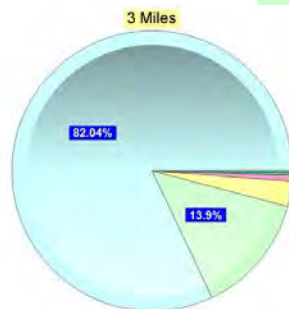
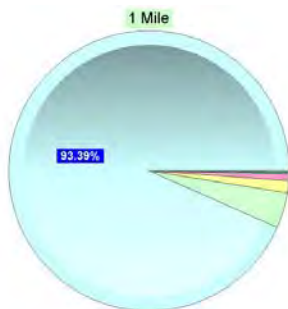
### Population

Estimated Population (2014)	6,844	38,524	51,703
Projected Population (2019)	6,905	38,841	52,057
Census Population (2010)	6,844	38,556	51,814
Census Population (2000)	7,302	42,266	56,235
Projected Annual Growth (2014-2019)	61 0.2%	316 0.2%	354 0.1%
Historical Annual Growth (2010-2014)	- -1.7%	-31 -2.4%	-111 -2.1%
Historical Annual Growth (2000-2010)	-458 -0.6%	-3,711 -0.9%	-4,421 -0.8%
Estimated Population Density (2014)	2,180 <i>psm</i>	1,363 <i>psm</i>	659 <i>psm</i>
Trade Area Size	3.1 <i>sq mi</i>	28.3 <i>sq mi</i>	78.5 <i>sq mi</i>



### Race and Ethnicity (2014)

Not Hispanic or Latino Population	6,749 98.6%	37,931 98.5%	50,986 98.6%
White	6,329 93.8%	31,301 82.5%	43,822 85.9%
Black or African American	271 4.0%	5,238 13.8%	5,536 10.9%
American Indian or Alaska Native	8 0.1%	57 0.2%	64 0.1%
Asian	54 0.8%	265 0.7%	327 0.6%
Hawaiian or Pacific Islander	1 -	5 -	6 -
Other Race	5 0.1%	62 0.2%	81 0.2%
Two or More Races	82 1.2%	1,002 2.6%	1,151 2.3%
Hispanic or Latino Population	94 1.4%	593 1.5%	718 1.4%
White	62 65.2%	303 51.1%	381 53.1%
Black or African American	9 9.1%	104 17.5%	109 15.2%
American Indian or Alaska Native	- -	7 1.2%	8 1.1%
Asian	- -	2 0.3%	2 0.3%
Hispanic Hawaiian or Pacific Islander	- -	- -	- -
Other Race	10 10.2%	70 11.8%	98 13.7%
Two or More Races	15 15.5%	107 18.0%	119 16.6%



White Black or African American American Indian or Alaska Native Asian Hawaiian or Pacific Islander Other Race 2+ Races

This report was produced using data from private and government sources deemed to be reliable. The information herein is provided without representation or warranty.



# GRAPHIC PROFILE

2000-2010 Census, 2014 Estimates with 2019 Projections

Calculated using Proportional Block Groups

Lat/Lon: 41.2334/-80.4747

RGRAP3

## 1899 E State St

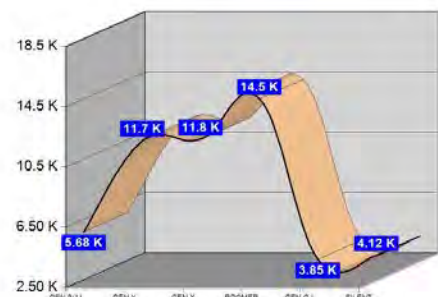
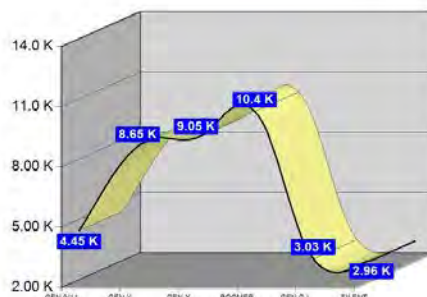
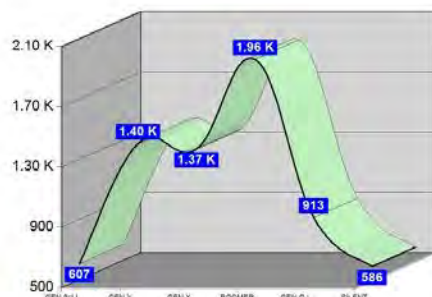
## Hermitage, PA

### Age Distribution (2014)

	1 Mile		3 Miles		5 Miles	
Age Under 5 Years	294	4.3%	2,211	5.7%	2,762	5.3%
Age 5 to 9 Years	313	4.6%	2,241	5.8%	2,920	5.6%
Age 10 to 14 Years	342	5.0%	2,283	5.9%	3,061	5.9%
Age 15 to 19 Years	331	4.8%	2,409	6.3%	3,194	6.2%
Age 20 to 24 Years	333	4.9%	2,209	5.7%	2,857	5.5%
Age 25 to 29 Years	364	5.3%	2,146	5.6%	2,708	5.2%
Age 30 to 34 Years	303	4.4%	2,097	5.4%	2,684	5.2%
Age 35 to 39 Years	327	4.8%	1,956	5.1%	2,634	5.1%
Age 40 to 44 Years	344	5.0%	2,124	5.5%	2,988	5.8%
Age 45 to 49 Years	431	6.3%	2,470	6.4%	3,420	6.6%
Age 50 to 54 Years	497	7.3%	2,825	7.3%	3,904	7.6%
Age 55 to 59 Years	538	7.9%	2,905	7.5%	4,043	7.8%
Age 60 to 64 Years	500	7.3%	2,547	6.6%	3,628	7.0%
Age 65 to 69 Years	428	6.3%	2,104	5.5%	2,932	5.7%
Age 70 to 74 Years	311	4.6%	1,592	4.1%	2,272	4.4%
Age 75 to 79 Years	275	4.0%	1,372	3.6%	1,846	3.6%
Age 80 to 84 Years	326	4.8%	1,257	3.3%	1,650	3.2%
Age 85 Years or Over	587	8.6%	1,777	4.6%	2,202	4.3%
Median Age	49.2		42.6		43.6	

### Generation (2014)

	1 Mile		3 Miles		5 Miles	
Generation 9/11 Millennials (Age Under 10 Years)	607	8.9%	4,452	11.6%	5,681	11.0%
Gen Y to Echo Boomers (Age 10 to 29 Years)	1,369	20.0%	9,047	23.5%	11,820	22.9%
Gen Xers (Age 30 to 49 Years)	1,405	20.5%	8,648	22.4%	11,726	22.7%
Baby Boomers (Age 50 to 69 Years)	1,963	28.7%	10,381	26.9%	14,507	28.1%
Silent Generation (Age 70 to 79 Years)	586	8.6%	2,963	7.7%	4,118	8.0%
G.I. Generation (Age 80 Years or Over)	913	13.3%	3,034	7.9%	3,852	7.4%



This report was produced using data from private and government sources deemed to be reliable. The information herein is provided without representation or warranty.

# GRAPHIC PROFILE

2000-2010 Census, 2014 Estimates with 2019 Projections

Calculated using Proportional Block Groups

Lat/Lon: 41.2334/-80.4747

RGRAP3

## 1899 E State St

## Hermitage, PA

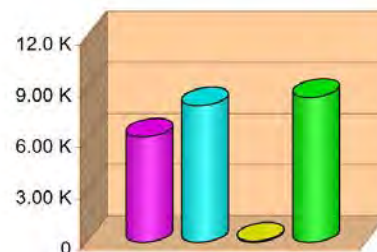
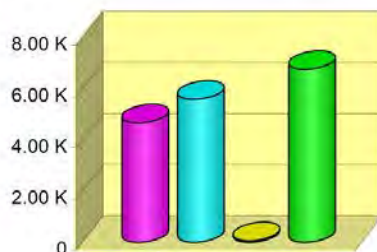
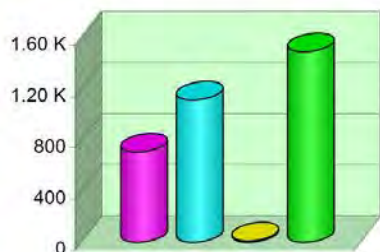
1 Mile

3 Miles

5 Miles

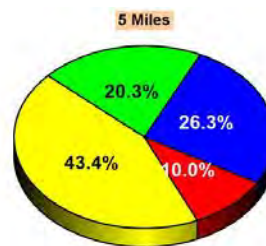
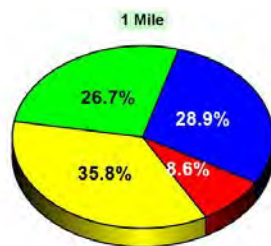
### Household Type (2014)

	1 Mile	3 Miles	5 Miles
Total Households	3,320	17,084	22,749
Family Households	1,819 33.5%	10,263 32.7%	14,180 35.2%
Family Households with Children	705 38.8%	4,671 45.5%	6,175 43.5%
Family Households No Children	1,114 61.2%	5,591 54.5%	8,005 56.5%
Non-Family Households	1,501 33.5%	6,821 32.7%	8,569 35.2%
Non-Family Households with Children	11 0.7%	60 0.9%	70 0.8%
Non-Family Households No Children	1,490 99.3%	6,761 99.1%	8,499 99.2%



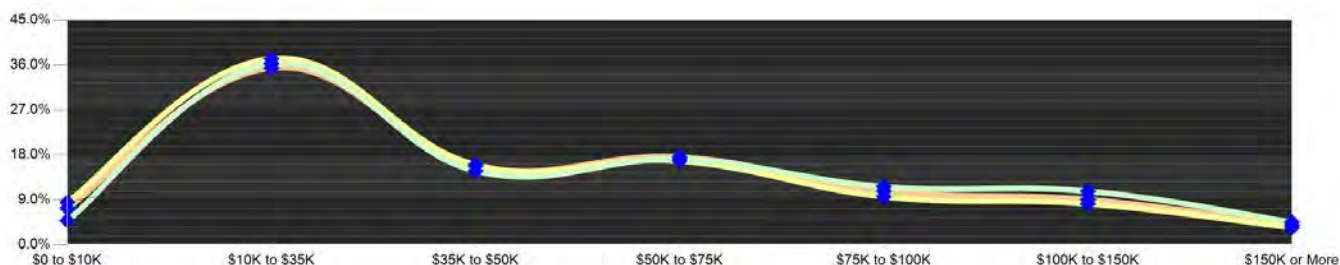
### Education Attainment (2014)

	1 Mile	3 Miles	5 Miles
Elementary or Some High School	437 8.6%	2,801 10.6%	3,618 10.0%
High School Graduate	1,818 35.8%	11,435 43.1%	15,717 43.4%
Some College or Associate Degree	1,466 28.9%	7,160 27.0%	9,509 26.3%
Bachelor or Graduate Degree	1,354 26.7%	5,118 19.3%	7,348 20.3%



### Household Income (2014)

	1 Mile	3 Miles	5 Miles
Estimated Average Household Income	\$51,254	\$46,097	\$49,269
Estimated Median Household Income	\$43,316	\$38,337	\$41,286
HH Income Under \$10,000	161 4.9%	1,462 8.6%	1,669 7.3%
HH Income \$10,000 to \$34,999	1,206 36.3%	6,373 37.3%	8,063 35.4%
HH Income \$35,000 to \$49,999	492 14.8%	2,738 16.0%	3,606 15.9%
HH Income \$50,000 to \$74,999	567 17.1%	2,871 16.8%	4,002 17.6%
HH Income \$75,000 to \$99,999	356 10.7%	1,401 8.2%	2,062 9.1%
HH Income \$100,000 to \$149,999	356 10.7%	1,401 8.2%	2,062 9.1%
HH Income \$150,000 or More	150 4.5%	590 3.5%	892 3.9%



This report was produced using data from private and government sources deemed to be reliable. The information herein is provided without representation or warranty.



# EXPANDED PROFILE

2000-2010 Census, 2014 Estimates with 2019 Projections

Calculated using Proportional Block Groups

Lat/Lon: 41.2334/-80.4747

RF5

1899 E State St Hermitage, PA	1 Mile	3 Miles	5 Miles
<b>Population</b>			
Estimated Population (2014)	6,844	38,524	51,703
Projected Population (2019)	6,905	38,841	52,057
Census Population (2010)	6,844	38,556	51,814
Census Population (2000)	7,302	42,266	56,235
Projected Annual Growth (2014 to 2019)	61 0.2%	316 0.2%	354 0.1%
Historical Annual Growth (2010 to 2014)	- -	-31 -	-111 -0.1%
Historical Annual Growth (2000 to 2010)	-458 -0.6%	-3,711 -0.9%	-4,421 -0.8%
Estimated Population Density (2014)	2,180 <i>psm</i>	1,363 <i>psm</i>	659 <i>psm</i>
Trade Area Size	3.14 <i>sq mi</i>	28.26 <i>sq mi</i>	78.49 <i>sq mi</i>
<b>Households</b>			
Estimated Households (2014)	3,320	17,084	22,749
Projected Households (2019)	3,393	17,454	23,229
Census Households (2010)	3,266	16,805	22,373
Census Households (2000)	3,167	17,740	23,350
Estimated Households with Children (2014)	716 21.6%	4,731 27.7%	6,245 27.5%
Estimated Average Household Size (2014)	2.01	2.21	2.24
<b>Average Household Income</b>			
Estimated Average Household Income (2014)	\$58,144	\$51,593	\$54,519
Projected Average Household Income (2019)	\$62,804	\$55,969	\$59,229
Estimated Average Family Income (2014)	\$79,012	\$64,522	\$67,147
<b>Median Household Income</b>			
Estimated Median Household Income (2014)	\$46,177	\$41,778	\$45,178
Projected Median Household Income (2019)	\$49,933	\$45,073	\$48,905
Estimated Median Family Income (2014)	\$65,715	\$54,806	\$57,900
<b>Per Capita Income</b>			
Estimated Per Capita Income (2014)	\$28,416	\$23,082	\$24,148
Projected Per Capita Income (2019)	\$31,091	\$25,374	\$26,606
Estimated Per Capita income 5 Year Growth	\$2,675 9.4%	\$2,292 9.9%	\$2,457 10.2%
Estimated Average Household Net Worth (2014)	\$324,201	\$307,369	\$328,405
<b>Daytime Demos (2014)</b>			
Total Businesses	460	1,875	2,483
Total Employees	4,406	22,806	29,893
Company Headquarter Businesses	1 0.1%	14 0.7%	16 0.7%
Company Headquarter Employees	31 0.7%	1,000 4.4%	1,224 4.1%
Employee Population per Business	9.6	12.2	12.0
Residential Population per Business	14.9	20.5	20.8

This report was produced using data from private and government sources deemed to be reliable. The information herein is provided without representation or warranty.

# EXPANDED PROFILE

2000-2010 Census, 2014 Estimates with 2019 Projections

Calculated using Proportional Block Groups

Lat/Lon: 41.2334/-80.4747

RF5

1899 E State St Hermitage, PA	1 Mile		3 Miles		5 Miles	
<b>Race &amp; Ethnicity</b>						
White (2014)	6,391	93.4%	31,604	82.0%	44,203	85.5%
Black or African American (2014)	279	4.1%	5,342	13.9%	5,645	10.9%
American Indian or Alaska Native (2014)	8	0.1%	64	0.2%	72	0.1%
Asian (2014)	54	0.8%	267	0.7%	329	0.6%
Hawaiian or Pacific Islander (2014)	1	-	5	-	6	-
Other Race (2014)	14	0.2%	132	0.3%	179	0.3%
Two or More Races (2014)	96	1.4%	1,109	2.9%	1,270	2.5%
Not Hispanic or Latino Population (2014)	6,749	98.6%	37,931	98.5%	50,986	98.6%
Hispanic or Latino Population (2014)	94	1.4%	593	1.5%	718	1.4%
Not Hispanic or Latino Population (2019)	6,788	98.3%	38,121	98.1%	51,186	98.3%
Hispanic or Latino Population (2019)	116	1.7%	719	1.9%	871	1.7%
Not Hispanic or Latino Population (2010)	6,761	98.8%	38,043	98.7%	51,193	98.8%
Hispanic or Latino Population (2010)	82	1.2%	513	1.3%	621	1.2%
Not Hispanic or Latino Population (2000)	7,249	99.3%	41,935	99.2%	55,828	99.3%
Hispanic or Latino Population (2000)	53	0.7%	331	0.8%	407	0.7%
Projected Hispanic Annual Growth (2014 to 2019)	22	4.7%	126	4.3%	153	4.3%
Historic Hispanic Annual Growth (2000 to 2014)	41	5.6%	262	5.6%	311	5.5%
<b>Age Distribution (2014)</b>						
Age Under 5	294	4.3%	2,211	5.7%	2,762	5.3%
Age 5 to 9 Years	313	4.6%	2,241	5.8%	2,920	5.6%
Age 10 to 14 Years	342	5.0%	2,283	5.9%	3,061	5.9%
Age 15 to 19 Years	331	4.8%	2,409	6.3%	3,194	6.2%
Age 20 to 24 Years	333	4.9%	2,209	5.7%	2,857	5.5%
Age 25 to 29 Years	364	5.3%	2,146	5.6%	2,708	5.2%
Age 30 to 34 Years	303	4.4%	2,097	5.4%	2,684	5.2%
Age 35 to 39 Years	327	4.8%	1,956	5.1%	2,634	5.1%
Age 40 to 44 Years	344	5.0%	2,124	5.5%	2,988	5.8%
Age 45 to 49 Years	431	6.3%	2,470	6.4%	3,420	6.6%
Age 50 to 54 Years	497	7.3%	2,825	7.3%	3,904	7.6%
Age 55 to 59 Years	538	7.9%	2,905	7.5%	4,043	7.8%
Age 60 to 64 Years	500	7.3%	2,547	6.6%	3,628	7.0%
Age 65 to 74 Years	739	10.8%	3,696	9.6%	5,203	10.1%
Age 75 to 84 Years	601	8.8%	2,629	6.8%	3,495	6.8%
Age 85 Years or Over	587	8.6%	1,777	4.6%	2,202	4.3%
Median Age	49.2		42.6		43.6	
<b>Gender Age Distribution (2014)</b>						
Female Population	3,779	55.2%	20,566	53.4%	27,290	52.8%
Age 0 to 19 Years	649	17.2%	4,483	21.8%	5,858	21.5%
Age 20 to 64 Years	1,919	50.8%	11,179	54.4%	14,983	54.9%
Age 65 Years or Over	1,210	32.0%	4,904	23.8%	6,448	23.6%
Female Median Age	51.8		44.5		45.2	
Male Population	3,065	44.8%	17,959	46.6%	24,414	47.2%
Age 0 to 19 Years	631	20.6%	4,660	25.9%	6,078	24.9%
Age 20 to 64 Years	1,717	56.0%	10,100	56.2%	13,883	56.9%
Age 65 Years or Over	716	23.4%	3,198	17.8%	4,453	18.2%
Male Median Age	46.2		40.6		41.8	

This report was produced using data from private and government sources deemed to be reliable. The information herein is provided without representation or warranty.



# EXPANDED PROFILE

2000-2010 Census, 2014 Estimates with 2019 Projections

Calculated using Proportional Block Groups

Lat/Lon: 41.2334/-80.4747

RF5

1899 E State St Hermitage, PA	1 Mile		3 Miles		5 Miles	
<b>Household Income Distribution (2014)</b>						
HH Income \$200,000 or More	84	2.5%	305	1.8%	418	1.8%
HH Income \$150,000 to \$199,999	66	2.0%	284	1.7%	475	2.1%
HH Income \$100,000 to \$149,999	356	10.7%	1,401	8.2%	2,062	9.1%
HH Income \$75,000 to \$99,999	387	11.7%	1,649	9.7%	2,455	10.8%
HH Income \$50,000 to \$74,999	567	17.1%	2,871	16.8%	4,002	17.6%
HH Income \$35,000 to \$49,999	492	14.8%	2,738	16.0%	3,606	15.9%
HH Income \$25,000 to \$34,999	451	13.6%	2,568	15.0%	3,353	14.7%
HH Income \$15,000 to \$24,999	582	17.5%	2,570	15.0%	3,247	14.3%
HH Income Under \$15,000	334	10.1%	2,697	15.8%	3,133	13.8%
HH Income \$35,000 or More	1,953	58.8%	9,249	54.1%	13,017	57.2%
HH Income \$75,000 or More	894	26.9%	3,640	21.3%	5,409	23.8%
<b>Housing (2014)</b>						
Total Housing Units	3,635		19,026		25,071	
Housing Units Occupied	3,320	91.3%	17,084	89.8%	22,749	90.7%
Housing Units Owner-Occupied	2,081	62.7%	10,618	62.2%	15,160	66.6%
Housing Units, Renter-Occupied	1,239	37.3%	6,465	37.8%	7,590	33.4%
Housing Units, Vacant	316	8.7%	1,942	10.2%	2,321	9.3%
<b>Marital Status (2014)</b>						
Never Married	1,210	20.5%	8,547	26.9%	10,853	25.3%
Currently Married	3,171	53.8%	14,833	46.7%	21,138	49.2%
Separated	238	4.0%	1,423	4.5%	1,794	4.2%
Widowed	676	11.5%	3,008	9.5%	3,889	9.1%
Divorced	599	10.2%	3,979	12.5%	5,288	12.3%
<b>Household Type (2014)</b>						
Population Family	4,916	71.8%	29,373	76.2%	40,283	77.9%
Population Non-Family	1,769	25.8%	8,416	21.8%	10,626	20.6%
Population Group Quarters	158	2.3%	736	1.9%	795	1.5%
Family Households	1,819	54.8%	10,263	60.1%	14,180	62.3%
Non-Family Households	1,501	45.2%	6,821	39.9%	8,569	37.7%
Married Couple with Children	454	14.3%	2,401	16.2%	3,461	16.4%
Average Family Household Size	2.7		2.9		2.8	
<b>Household Size (2014)</b>						
1 Person Households	1,364	41.1%	6,062	35.5%	7,585	33.3%
2 Person Households	1,109	33.4%	5,533	32.4%	7,690	33.8%
3 Person Households	404	12.2%	2,560	15.0%	3,478	15.3%
4 Person Households	282	8.5%	1,727	10.1%	2,418	10.6%
5 Person Households	117	3.5%	761	4.5%	1,011	4.4%
6 or More Person Households	43	1.3%	441	2.6%	568	2.5%
<b>Household Vehicles (2014)</b>						
Households with 0 Vehicles Available	374	11.3%	2,100	12.3%	2,369	10.4%
Households with 1 Vehicles Available	1,591	47.9%	7,398	43.3%	9,316	41.0%
Households with 2 or More Vehicles Available	1,355	40.8%	7,586	44.4%	11,064	48.6%
Total Vehicles Available	4,638		25,127		35,550	
Average Vehicles Per Household	1.4		1.5		1.6	

This report was produced using data from private and government sources deemed to be reliable. The information herein is provided without representation or warranty.

# EXPANDED PROFILE

2000-2010 Census, 2014 Estimates with 2019 Projections

Calculated using Proportional Block Groups

Lat/Lon: 41.2334/-80.4747

RF5

## 1899 E State St

### Hermitage, PA

#### Labor Force (2014)

	1 Mile	3 Miles	5 Miles
Estimated Labor Population Age 16 Years or Over	5,671	30,641	41,598
Estimated Civilian Employed	3,079 54.3%	15,796 51.6%	21,712 52.2%
Estimated Civilian Unemployed	152 2.7%	1,327 4.3%	1,734 4.2%
Estimated in Armed Forces	1 -	31 0.1%	31 0.1%
Estimated Not in Labor Force	2,439 43.0%	13,487 44.0%	18,120 43.6%
Unemployment Rate	2.7%	4.3%	4.2%

#### Occupation (2010)

	1 Mile	3 Miles	5 Miles
Occupation: Population Age 16 Years or Over	2,759	15,155	21,057
Management, Business, Financial Operations	267 9.7%	1,399 9.2%	2,093 9.9%
Professional, Related	850 30.8%	3,283 21.7%	4,528 21.5%
Service	471 17.1%	3,314 21.9%	4,349 20.7%
Sales, Office	695 25.2%	3,734 24.6%	5,192 24.7%
Farming, Fishing, Forestry	4 0.2%	27 0.2%	55 0.3%
Construct, Extraction, Maintenance	177 6.4%	988 6.5%	1,530 7.3%
Production, Transport Material Moving	295 10.7%	2,410 15.9%	3,310 15.7%
White Collar Workers	1,812 65.7%	8,415 55.5%	11,813 56.1%
Blue Collar Workers	947 34.3%	6,740 44.5%	9,244 43.9%

#### Consumer Expenditure (2014)

	1 Mile	3 Miles	5 Miles
Total Household Expenditure	\$160 M	\$759 M	\$1.05 B
Total Non-Retail Expenditure	\$91.5 M 57.2%	\$434 M 57.2%	\$601 M 57.2%
Total Retail Expenditure	\$68.5 M 42.8%	\$325 M 42.8%	\$449 M 42.8%
Apparel	\$7.59 M 4.7%	\$36.1 M 4.8%	\$49.9 M 4.8%
Contributions	\$5.80 M 3.6%	\$26.8 M 3.5%	\$37.4 M 3.6%
Education	\$3.67 M 2.3%	\$17.1 M 2.3%	\$23.7 M 2.3%
Entertainment	\$8.88 M 5.6%	\$42.0 M 5.5%	\$58.2 M 5.5%
Food and Beverages	\$24.8 M 15.5%	\$118 M 15.6%	\$163 M 15.5%
Furnishings and Equipment	\$6.89 M 4.3%	\$32.3 M 4.3%	\$45.0 M 4.3%
Gifts	\$4.19 M 2.6%	\$19.4 M 2.6%	\$27.0 M 2.6%
Health Care	\$10.2 M 6.4%	\$48.7 M 6.4%	\$66.8 M 6.4%
Household Operations	\$5.55 M 3.5%	\$25.9 M 3.4%	\$36.2 M 3.4%
Miscellaneous Expenses	\$2.75 M 1.7%	\$13.0 M 1.7%	\$17.9 M 1.7%
Personal Care	\$2.32 M 1.5%	\$11.1 M 1.5%	\$15.3 M 1.5%
Personal Insurance	\$1.58 M 1.0%	\$7.40 M 1.0%	\$10.3 M 1.0%
Reading	\$532 K 0.3%	\$2.50 M 0.3%	\$3.46 M 0.3%
Shelter	\$30.9 M 19.3%	\$146 M 19.2%	\$202 M 19.2%
Tobacco	\$1.10 M 0.7%	\$5.38 M 0.7%	\$7.32 M 0.7%
Transportation	\$31.9 M 20.0%	\$152 M 20.0%	\$210 M 20.1%
Utilities	\$11.4 M 7.1%	\$55.0 M 7.2%	\$75.4 M 7.2%

#### Educational Attainment (2014)

	1 Mile	3 Miles	5 Miles
Adult Population Age 25 Years or Over	5,074	26,513	36,192
Elementary (Grade Level 0 to 8)	116 2.3%	757 2.9%	1,011 2.8%
Some High School (Grade Level 9 to 11)	321 6.3%	2,043 7.7%	2,607 7.2%
High School Graduate	1,818 35.8%	11,435 43.1%	15,717 43.4%
Some College	939 18.5%	4,921 18.6%	6,726 18.6%
Associate Degree Only	526 10.4%	2,239 8.4%	2,783 7.7%
Bachelor Degree Only	993 19.6%	3,530 13.3%	5,090 14.1%
Graduate Degree	361 7.1%	1,588 6.0%	2,258 6.2%

This report was produced using data from private and government sources deemed to be reliable. The information herein is provided without representation or warranty.



# EXPANDED PROFILE

2000-2010 Census, 2014 Estimates with 2019 Projections

Calculated using Proportional Block Groups

Lat/Lon: 41.2334/-80.4747

RF5

## 1899 E State St

### Hermitage, PA

#### Units In Structure (2010)

	1 Mile		3 Miles		5 Miles	
1 Detached Unit	2,063	63.2%	11,431	68.0%	15,790	70.6%
1 Attached Unit	167	5.1%	880	5.2%	1,145	5.1%
2 to 4 Units	298	9.1%	1,766	10.5%	2,117	9.5%
5 to 9 Units	214	6.5%	883	5.3%	1,011	4.5%
10 to 19 Units	322	9.9%	690	4.1%	786	3.5%
20 to 49 Units	23	0.7%	265	1.6%	313	1.4%
50 or More Units	138	4.2%	621	3.7%	651	2.9%
Mobile Home or Trailer	42	1.3%	267	1.6%	560	2.5%
Other Structure	-	-	-	-	-	-

#### Homes Built By Year (2010)

Homes Built 2005 or later	92	2.8%	364	2.2%	496	2.2%
Homes Built 2000 to 2004	91	2.8%	654	3.9%	979	4.4%
Homes Built 1990 to 1999	182	5.6%	1,030	6.1%	1,678	7.5%
Homes Built 1980 to 1989	184	5.6%	1,009	6.0%	1,491	6.7%
Homes Built 1970 to 1979	317	9.7%	1,951	11.6%	2,758	12.3%
Homes Built 1960 to 1969	427	13.1%	2,008	11.9%	2,714	12.1%
Homes Built 1950 to 1959	751	23.0%	3,053	18.2%	4,023	18.0%
Homes Built Before 1949	1,222	37.4%	6,737	40.1%	8,234	36.8%

#### Home Values (2010)

Home Values \$1,000,000 or More	8	0.4%	33	0.3%	43	0.3%
Home Values \$500,000 to \$999,999	35	1.7%	167	1.6%	230	1.5%
Home Values \$400,000 to \$499,999	27	1.3%	158	1.5%	250	1.7%
Home Values \$300,000 to \$399,999	51	2.5%	315	3.0%	520	3.5%
Home Values \$200,000 to \$299,999	156	7.6%	948	9.1%	1,540	10.3%
Home Values \$150,000 to \$199,999	255	12.4%	1,118	10.7%	1,951	13.1%
Home Values \$100,000 to \$149,999	534	26.0%	1,846	17.6%	2,877	19.3%
Home Values \$70,000 to \$99,999	568	27.7%	2,230	21.3%	2,925	19.6%
Home Values \$50,000 to \$69,999	283	13.8%	1,577	15.1%	1,990	13.3%
Home Values \$25,000 to \$49,999	82	4.0%	1,244	11.9%	1,566	10.5%
Home Values Under \$25,000	54	2.6%	828	7.9%	1,033	6.9%
Owner-Occupied Median Home Value	\$107,977		\$96,507		\$106,069	
Renter-Occupied Median Rent	\$520		\$448		\$456	

#### Transportation To Work (2010)

Drive to Work Alone	2,410	89.5%	12,965	88.5%	18,109	88.7%
Drive to Work in Carpool	149	5.5%	792	5.4%	1,104	5.4%
Travel to Work by Public Transportation	6	0.2%	51	0.3%	72	0.4%
Drive to Work on Motorcycle	-	-	4	-	11	0.1%
Walk or Bicycle to Work	64	2.4%	275	1.9%	324	1.6%
Other Means	7	0.3%	79	0.5%	96	0.5%
Work at Home	57	2.1%	481	3.3%	708	3.5%

#### Travel Time (2010)

Travel to Work in 14 Minutes or Less	1,587	60.2%	7,539	53.2%	9,817	49.8%
Travel to Work in 15 to 29 Minutes	468	17.7%	3,852	27.2%	6,048	30.7%
Travel to Work in 30 to 59 Minutes	487	18.5%	2,174	15.3%	3,012	15.3%
Travel to Work in 60 Minutes or More	95	3.6%	601	4.2%	839	4.3%
Average Minutes Travel to Work	14.5		14.2		14.9	

This report was produced using data from private and government sources deemed to be reliable. The information herein is provided without representation or warranty.