

COCCA DEVELOPMENT

RETAIL SPACE FOR LEASE
39 NORTH STATE HIGHWAY 16
HEBBRONVILLE, TX 78361



- Former Alco Department Store
- Large ample parking lot with approximately 70 spaces
- Hebbronville is considered the hub of the ranching & cattle industry
- Census-designated place (CDP) and county seat of Jim Hogg County

AVAILABLE SUITE AREA—\$7/square foot NN (Self CAM):

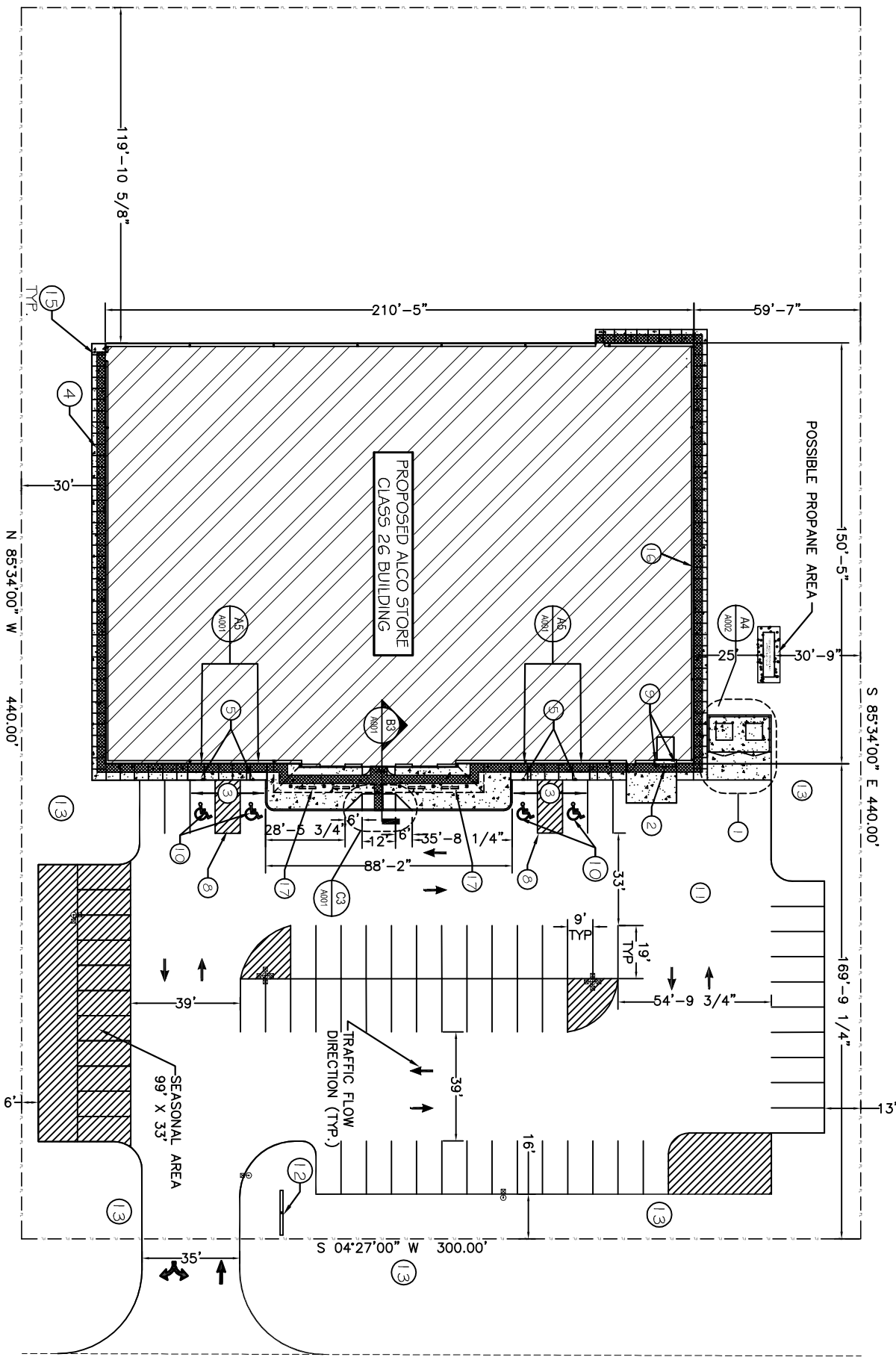
Approximately 31,500 square feet

NN: Base rent plus Real Estate Taxes and Insurance; tenant responsible for all common area maintenance

CALL 330-729-1010 FOR MORE INFORMATION

www.coccadevelopment.com

N 04°27'00" E 300.00'



A1
SITE PLAN
 SCALE: 1/32" = 1'



TO HEBBRONVILLE, TX

EDGE OF PAVEMENT

TO FREER, TX

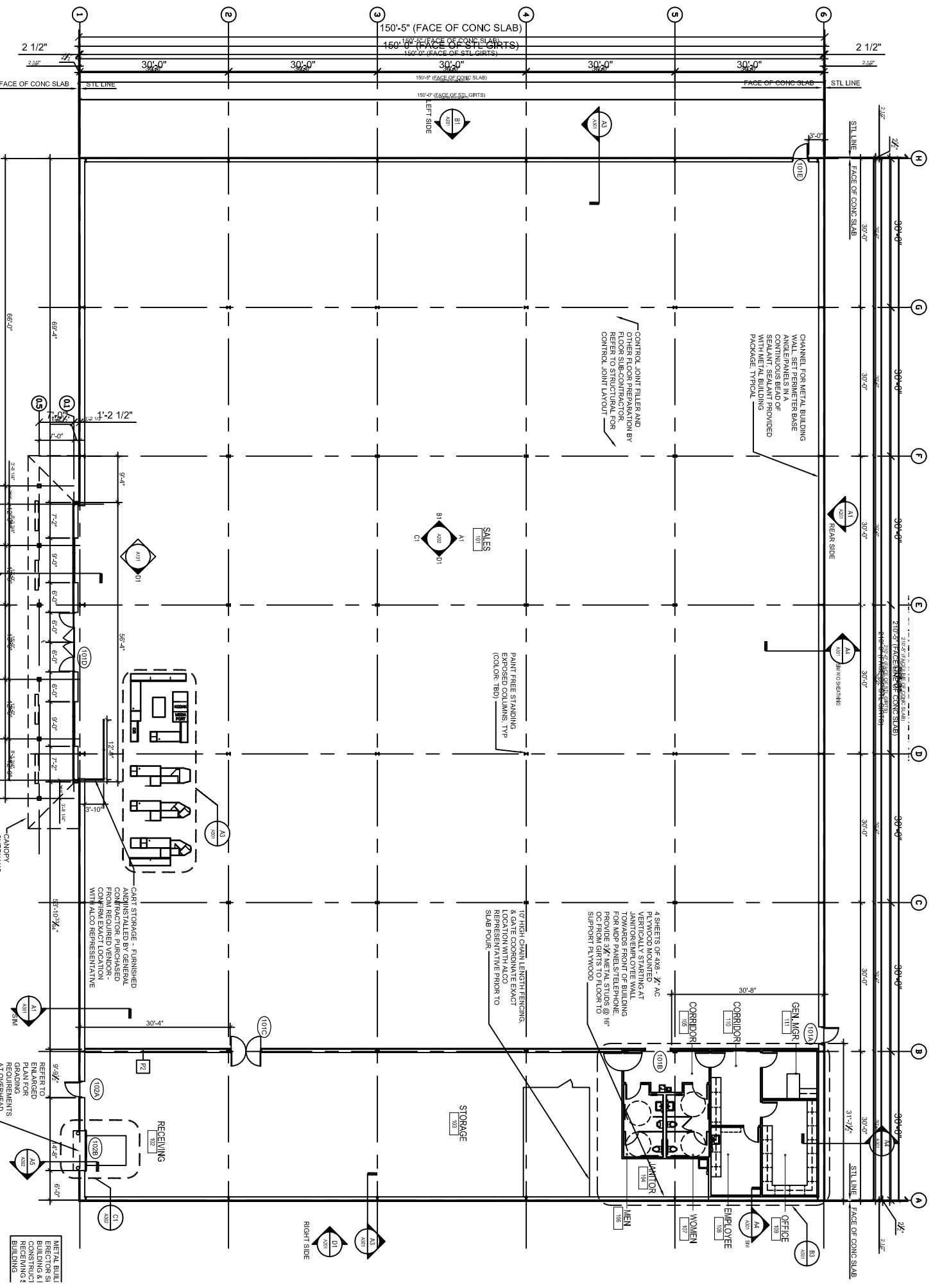
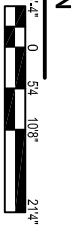
(120' R.O.W.)

STATE HIGHWAY 16

40' E/E)

SIGN

FLOOR PLAN
SCALE: 3/32"=1'-0"



METAL BUILD ERECTORS AND RECEIVING & BUILDING

CART STORAGE - FURNISHED AND INSTALLED BY GENERAL CONTRACTOR, PURCHASED FROM REQUIRED VENDOR - CONFIRM EXACT LOCATION WITH ALSO REPRESENTATIVE

RECEIVING

STORAGE

TO HIGH-CAPACITY LENGTHENING, REFER TO CONTRACT DRAWING LOCATION WITH ALSO REPRESENTATIVE PRIOR TO SLAB POUR

GEN. MGR.

CORRIDOR

CORRIDOR

JANITOR

WOMEN

EMPLOYEE

OFFICE

SALES

SALES

SALES

SALES

SALES

SALES

SALES

SALES

SALES

SALES

SALES

SALES

SALES

SALES

SALES

SALES

SALES

SALES

SALES

39 North Highway 16
Hebbronville, TX 78361



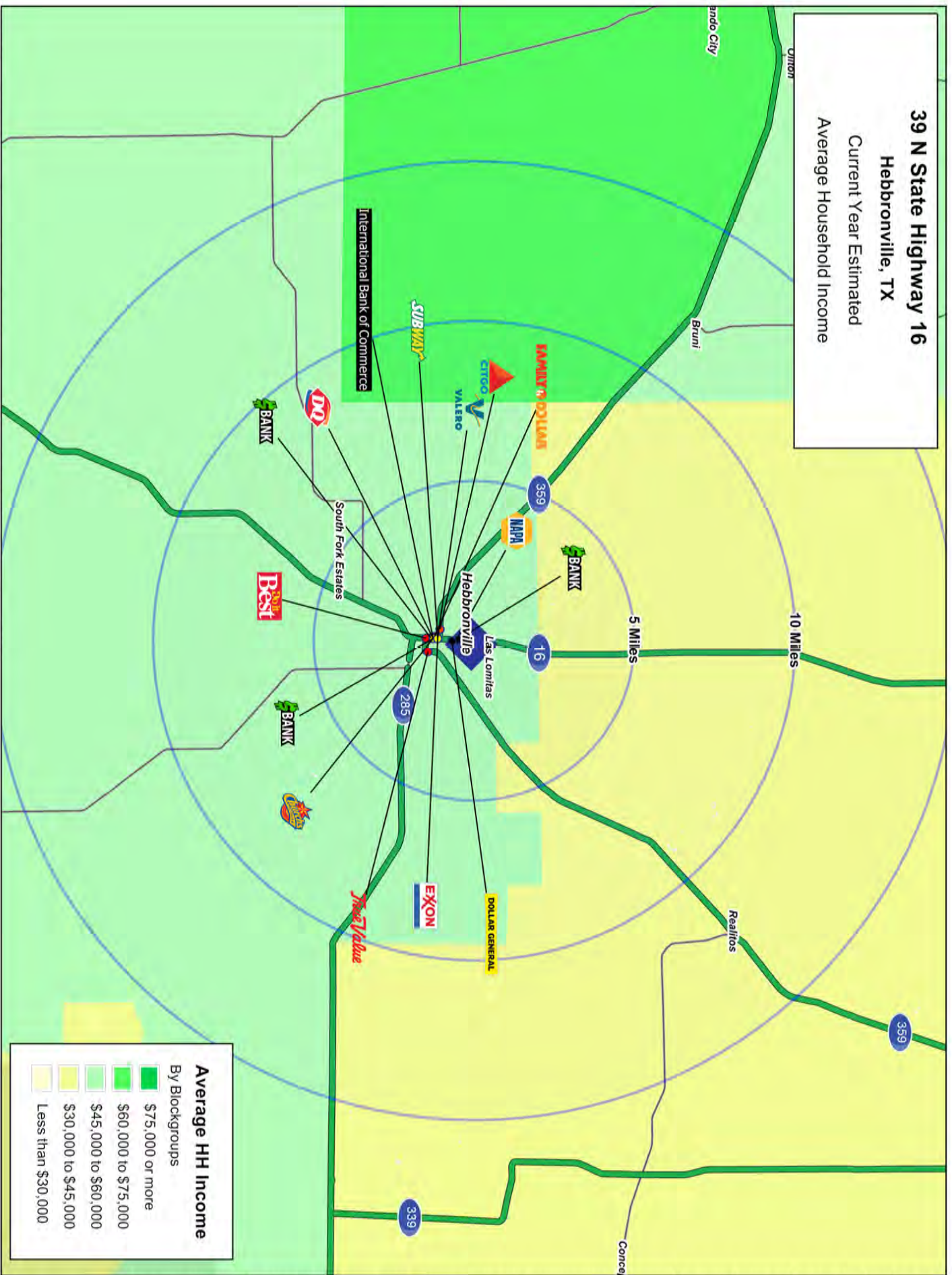
This map was produced using data from private and Government sources deemed to be reliable. The information herein is provided without representation or warranty.

©2016 STSS USA Inc. Chandler, AZ 86015-4917-1112 All Rights Reserved.

Logos are for identification purposes only and may be trademarks of their respective companies.

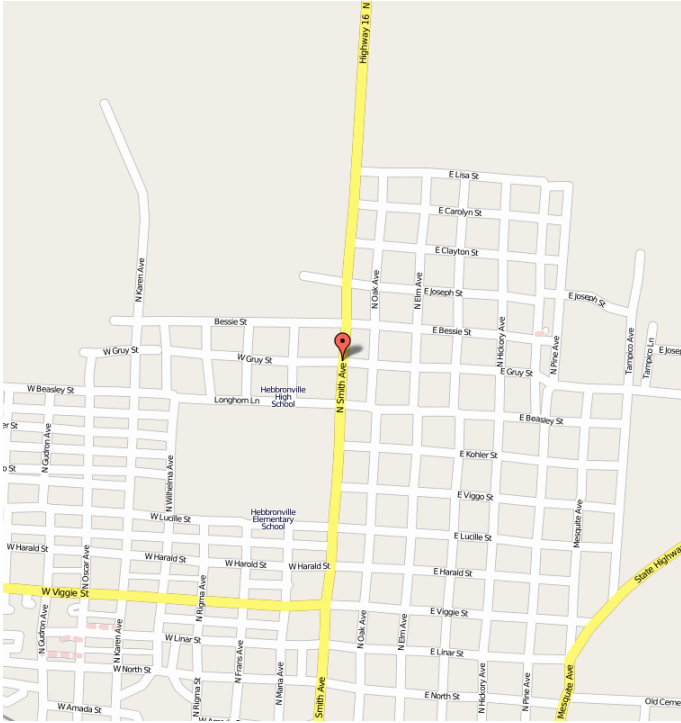
Lat: 27.31655 Long: -98.07429 Zoom: 16

39 N State Highway 16
Hebbronville, TX
 Current Year Estimated
 Average Household Income



This map was produced using data from private and government sources deemed to be reliable. The information herein is provided without representation or warranty.

39 North State Highway 16 Hebronville, TX 78361



The site is located approximately 150 miles south of San Antonio, 230 miles south of Austin, and 295 miles southwest of Houston.

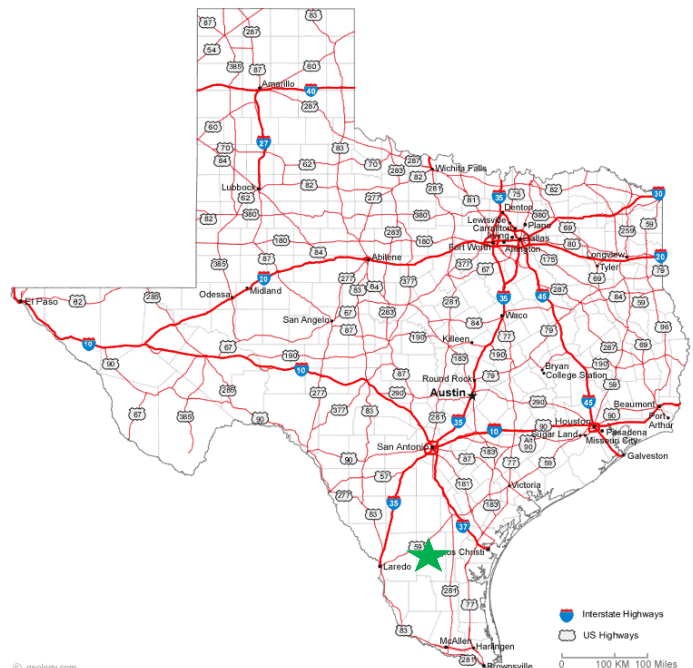
The nearest city to the site is Las Lomitas, approximately 1.5 miles Northeast, while North Jim Hogg is 1.7 Southwest, South Fork Estates is 2 miles Northwest, and

Bruni is 3.5 miles Northwest.

Hebronville is located on land which once formed part of the Las Noriecitias, one of the earliest ranches founded in the area in Jim Hogg County.

Created in 1883 when the Texas-Mexican Railway Company built a railroad through the area.

Hebronville is known as the “Vaquero Capitol of Texas and the United States”.



COCCA DEVELOPMENT, LTD

39 North State Highway 16 Hebronville, TX 78361

AT A GLANCE

- Hebronville is a census-designated place (CDP) and the county seat of Jim Hogg County.
- The town's namesake, James Richard Hebron, acquired approximately 18,000 acres along with 2 others, around 1880. Hebronville was then created in 1883 when the Texas-Mexican Railway Company built a railroad thru the area.
- In 1918, Helen Sewell Harbison of Hebronville became the first woman in Texas to cast a ballot, two years before the implementation of the Nineteenth Amendment to the United States Constitution.
- The community calls itself "Vaquero Capitol of Texas and the USA".
- For a time, Hebronville ranked as the largest cattle-shipping center in the country and it continues to be a hub of ranching activity.
- Median age is 34 years and it boasts a 92.8% Hispanic population.

GRAPHIC PROFILE

2000-2010 Census, 2014 Estimates with 2019 Projections

Calculated using Proportional Block Groups

Lat/Lon: 27.3283/-98.6769

RGRAP3

39 N State Highway 16

Hebbronville, TX

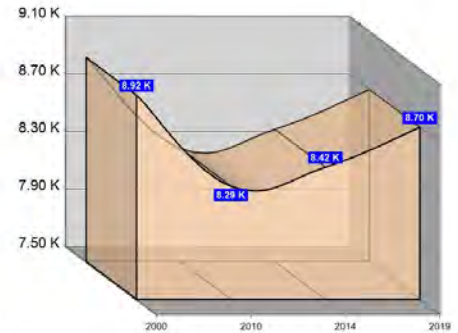
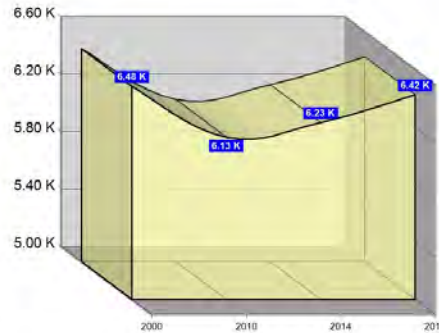
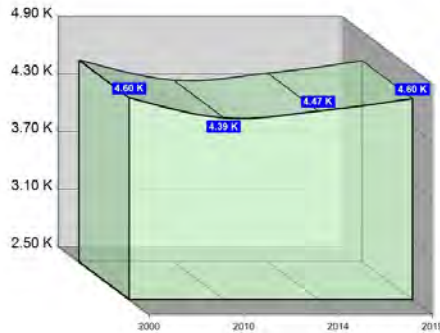
15 Miles

20 Miles

25 Miles

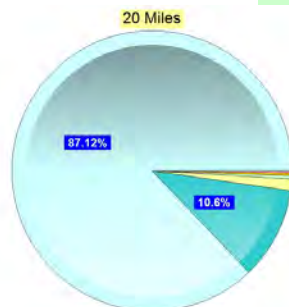
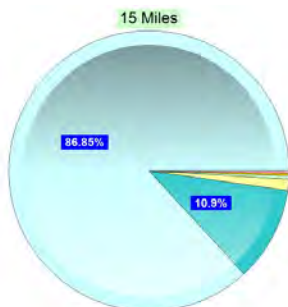
Population

Estimated Population (2014)	4,466	6,231	8,420
Projected Population (2019)	4,595	6,424	8,697
Census Population (2010)	4,394	6,128	8,286
Census Population (2000)	4,605	6,483	8,922
Projected Annual Growth (2014-2019)	130 0.6%	193 0.6%	277 0.7%
Historical Annual Growth (2010-2014)	71 -1.2%	103 -1.4%	134 -1.9%
Historical Annual Growth (2000-2010)	-210 -0.5%	-355 -0.5%	-636 -0.7%
Estimated Population Density (2014)	6 psm	5 psm	4 psm
Trade Area Size	706.6 sq mi	1,256.1 sq mi	1,962.6 sq mi



Race and Ethnicity (2014)

Not Hispanic or Latino Population	331 7.4%	472 7.6%	649 7.7%
White	285 85.9%	411 87.0%	571 88.0%
Black or African American	14 4.3%	19 3.9%	22 3.4%
American Indian or Alaska Native	9 2.8%	14 2.9%	17 2.6%
Asian	11 3.4%	13 2.7%	15 2.3%
Hawaiian or Pacific Islander	- -	- -	2 0.3%
Other Race	- 0.1%	1 0.2%	3 0.4%
Two or More Races	12 3.5%	16 3.3%	20 3.0%
Hispanic or Latino Population	4,134 92.6%	5,759 92.4%	7,772 92.3%
White	3,594 86.9%	5,018 87.1%	6,791 87.4%
Black or African American	4 0.1%	6 0.1%	9 0.1%
American Indian or Alaska Native	3 0.1%	6 0.1%	8 0.1%
Asian	1 -	2 -	2 -
Hispanic Hawaiian or Pacific Islander	- -	- -	- -
Other Race	486 11.8%	659 11.4%	865 11.1%
Two or More Races	45 1.1%	68 1.2%	97 1.2%



White Black or African American American Indian or Alaska Native Asian Hawaiian or Pacific Islander Other Race 2+ Races

This report was produced using data from private and government sources deemed to be reliable. The information herein is provided without representation or warranty.

GRAPHIC PROFILE

2000-2010 Census, 2014 Estimates with 2019 Projections

Calculated using Proportional Block Groups

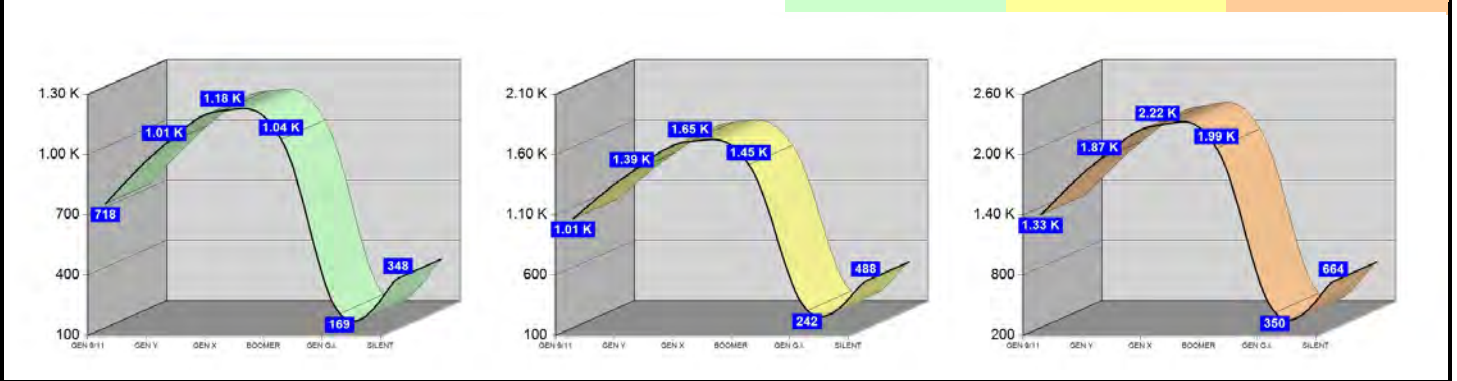
Lat/Lon: 27.3283/-98.6769

RGRAP3

39 N State Highway 16 Hebbronville, TX

	15 Miles	20 Miles	25 Miles
Age Distribution (2014)			
Age Under 5 Years	354 7.9%	506 8.1%	672 8.0%
Age 5 to 9 Years	364 8.2%	500 8.0%	656 7.8%
Age 10 to 14 Years	342 7.7%	471 7.6%	635 7.5%
Age 15 to 19 Years	313 7.0%	438 7.0%	595 7.1%
Age 20 to 24 Years	267 6.0%	379 6.1%	508 6.0%
Age 25 to 29 Years	259 5.8%	358 5.8%	480 5.7%
Age 30 to 34 Years	262 5.9%	360 5.8%	475 5.6%
Age 35 to 39 Years	243 5.4%	333 5.3%	440 5.2%
Age 40 to 44 Years	244 5.5%	336 5.4%	456 5.4%
Age 45 to 49 Years	262 5.9%	366 5.9%	503 6.0%
Age 50 to 54 Years	255 5.7%	360 5.8%	505 6.0%
Age 55 to 59 Years	269 6.0%	379 6.1%	516 6.1%
Age 60 to 64 Years	254 5.7%	355 5.7%	487 5.8%
Age 65 to 69 Years	261 5.8%	361 5.8%	480 5.7%
Age 70 to 74 Years	204 4.6%	281 4.5%	383 4.6%
Age 75 to 79 Years	144 3.2%	207 3.3%	280 3.3%
Age 80 to 84 Years	99 2.2%	143 2.3%	199 2.4%
Age 85 Years or Over	70 1.6%	99 1.6%	151 1.8%
Median Age	35.6	35.7	36.3

	15 Miles	20 Miles	25 Miles
Generation (2014)			
Generation 9/11 Millennials (Age Under 10 Years)	718 16.1%	1,006 16.1%	1,327 15.8%
Gen Y to Echo Boomers (Age 10 to 29 Years)	1,181 26.5%	1,646 26.4%	2,217 26.3%
Gen Xers (Age 30 to 49 Years)	1,011 22.6%	1,395 22.4%	1,875 22.3%
Baby Boomers (Age 50 to 69 Years)	1,038 23.2%	1,454 23.3%	1,988 23.6%
Silent Generation (Age 70 to 79 Years)	348 7.8%	488 7.8%	664 7.9%
G.I. Generation (Age 80 Years or Over)	169 3.8%	242 3.9%	350 4.2%



This report was produced using data from private and government sources deemed to be reliable. The information herein is provided without representation or warranty.

GRAPHIC PROFILE

2000-2010 Census, 2014 Estimates with 2019 Projections

Calculated using Proportional Block Groups

Lat/Lon: 27.3283/-98.6769

RGRAP3

39 N State Highway 16 Hebbronville, TX

15 Miles

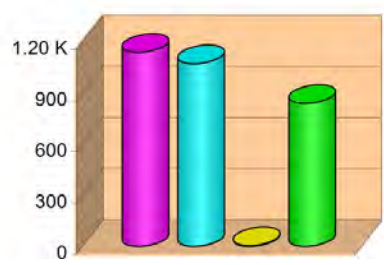
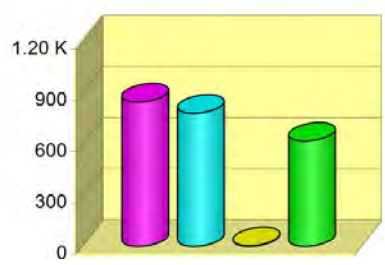
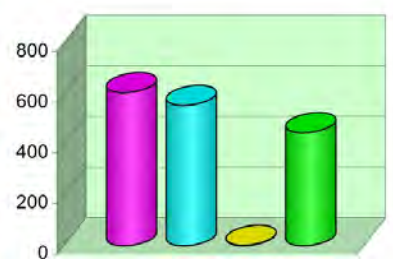
20 Miles

25 Miles

Household Type (2014)

	15 Miles	20 Miles	25 Miles
Total Households	1,611	2,246	3,051
Family Households	1,162 34.5%	1,626 34.7%	2,209 35.1%
Family Households with Children	606 52.2%	846 52.0%	1,138 51.5%
Family Households No Children	556 47.8%	780 48.0%	1,071 48.5%
Non-Family Households	449 34.5%	620 34.7%	842 35.1%
Non-Family Households with Children	2 0.4%	3 0.5%	4 0.5%
Non-Family Households No Children	447 99.6%	617 99.5%	838 99.5%

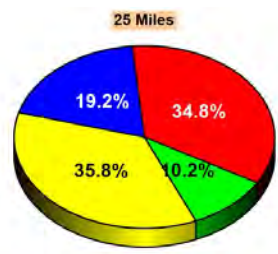
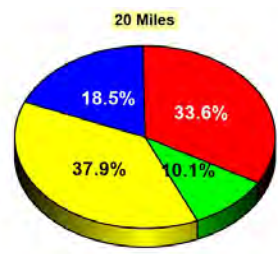
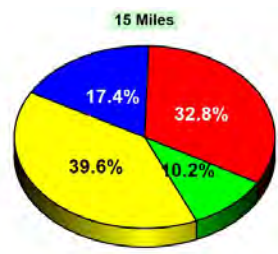
- Family Households with Children
- Family Households No Children
- Non-Family Households with Children
- Non-Family Households No Children



Education Attainment (2014)

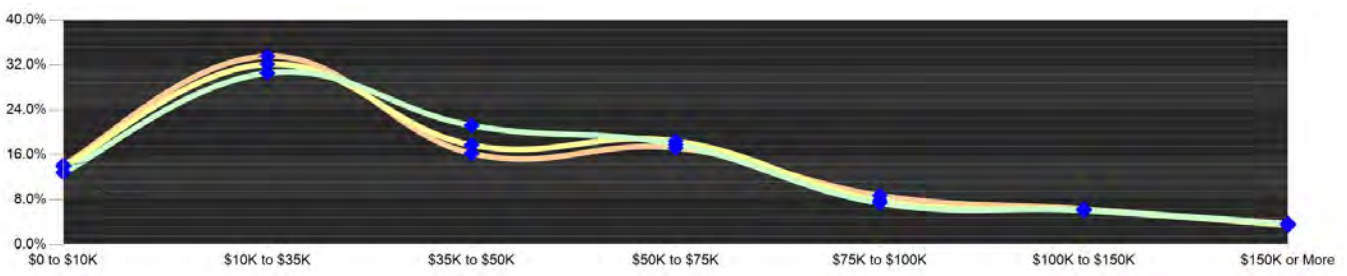
	15 Miles	20 Miles	25 Miles
Elementary or Some High School	927 32.8%	1,321 33.6%	1,864 34.8%
High School Graduate	1,119 39.6%	1,490 37.9%	1,916 35.8%
Some College or Associate Degree	490 17.4%	726 18.5%	1,026 19.2%
Bachelor or Graduate Degree	287 10.2%	397 10.1%	545 10.2%

- Elementary or Some High School
- High School Graduate
- Some College or Associate Degree
- Bachelor or Graduate Degree



Household Income (2014)

	15 Miles	20 Miles	25 Miles
Estimated Average Household Income	\$45,550	\$45,211	\$45,307
Estimated Median Household Income	\$36,065	\$36,898	\$36,185
HH Income Under \$10,000	208 12.9%	313 13.9%	434 14.2%
HH Income \$10,000 to \$34,999	493 30.6%	723 32.2%	1,026 33.6%
HH Income \$35,000 to \$49,999	343 21.3%	400 17.8%	497 16.3%
HH Income \$50,000 to \$74,999	288 17.9%	415 18.5%	527 17.3%
HH Income \$75,000 to \$99,999	99 6.1%	138 6.1%	194 6.4%
HH Income \$100,000 to \$149,999	99 6.1%	138 6.1%	194 6.4%
HH Income \$150,000 or More	61 3.8%	81 3.6%	106 3.5%



This report was produced using data from private and government sources deemed to be reliable. The information herein is provided without representation or warranty.

EXPANDED PROFILE

2000-2010 Census, 2014 Estimates with 2019 Projections

Calculated using Proportional Block Groups

Lat/Lon: 27.3283/-98.6769

RF5

39 N State Highway 16 Hebbronville, TX	15 Miles	20 Miles	25 Miles
Population			
Estimated Population (2014)	4,466	6,231	8,420
Projected Population (2019)	4,595	6,424	8,697
Census Population (2010)	4,394	6,128	8,286
Census Population (2000)	4,605	6,483	8,922
Projected Annual Growth (2014 to 2019)	130 0.6%	193 0.6%	277 0.7%
Historical Annual Growth (2010 to 2014)	71 0.4%	103 0.4%	134 0.4%
Historical Annual Growth (2000 to 2010)	-210 -0.5%	-355 -0.5%	-636 -0.7%
Estimated Population Density (2014)	6 psm	5 psm	4 psm
Trade Area Size	706.57 sq mi	1,256.06 sq mi	1,962.65 sq mi
Households			
Estimated Households (2014)	1,611	2,246	3,051
Projected Households (2019)	1,648	2,302	3,130
Census Households (2010)	1,584	2,207	2,998
Census Households (2000)	1,544	2,179	3,017
Estimated Households with Children (2014)	608 37.7%	849 37.8%	1,142 37.4%
Estimated Average Household Size (2014)	2.77	2.77	2.76
Average Household Income			
Estimated Average Household Income (2014)	\$47,321	\$47,010	\$46,814
Projected Average Household Income (2019)	\$51,609	\$51,210	\$50,894
Estimated Average Family Income (2014)	\$56,354	\$55,322	\$54,747
Median Household Income			
Estimated Median Household Income (2014)	\$36,605	\$35,804	\$35,559
Projected Median Household Income (2019)	\$39,625	\$38,748	\$38,451
Estimated Median Family Income (2014)	\$44,487	\$44,891	\$44,215
Per Capita Income			
Estimated Per Capita Income (2014)	\$17,082	\$16,959	\$16,977
Projected Per Capita Income (2019)	\$18,522	\$18,358	\$18,329
Estimated Per Capita income 5 Year Growth	\$1,440 8.4%	\$1,400 8.3%	\$1,352 8.0%
Estimated Average Household Net Worth (2014)	\$297,196	\$290,374	\$288,112
Daytime Demos (2014)			
Total Businesses	104	150	205
Total Employees	1,292	1,613	2,092
Company Headquarter Businesses	-	-	-
Company Headquarter Employees	-	-	-
Employee Population per Business	12.4	10.8	10.2
Residential Population per Business	42.9	41.7	41.0

This report was produced using data from private and government sources deemed to be reliable. The information herein is provided without representation or warranty.

EXPANDED PROFILE

2000-2010 Census, 2014 Estimates with 2019 Projections

Calculated using Proportional Block Groups

Lat/Lon: 27.3283/-98.6769

RF5

39 N State Highway 16

Hebbronville, TX

Race & Ethnicity

	15 Miles		20 Miles		25 Miles	
White (2014)	3,879	86.9%	5,429	87.1%	7,362	87.4%
Black or African American (2014)	18	0.4%	25	0.4%	31	0.4%
American Indian or Alaska Native (2014)	13	0.3%	20	0.3%	24	0.3%
Asian (2014)	12	0.3%	15	0.2%	17	0.2%
Hawaiian or Pacific Islander (2014)	-	-	-	-	2	-
Other Race (2014)	487	10.9%	660	10.6%	868	10.3%
Two or More Races (2014)	57	1.3%	83	1.3%	116	1.4%
Not Hispanic or Latino Population (2014)	331	7.4%	472	7.6%	649	7.7%
Hispanic or Latino Population (2014)	4,134	92.6%	5,759	92.4%	7,772	92.3%
Not Hispanic or Latino Population (2019)	330	7.2%	472	7.3%	650	7.5%
Hispanic or Latino Population (2019)	4,265	92.8%	5,952	92.7%	8,048	92.5%
Not Hispanic or Latino Population (2010)	328	7.5%	464	7.6%	635	7.7%
Hispanic or Latino Population (2010)	4,067	92.5%	5,664	92.4%	7,651	92.3%
Not Hispanic or Latino Population (2000)	458	9.9%	650	10.0%	847	9.5%
Hispanic or Latino Population (2000)	4,147	90.1%	5,833	90.0%	8,075	90.5%
Projected Hispanic Annual Growth (2014 to 2019)	131	0.6%	194	0.7%	276	0.7%
Historic Hispanic Annual Growth (2000 to 2014)	-13	-	-74	-0.1%	-303	-0.3%

Age Distribution (2014)

Age Under 5	354	7.9%	506	8.1%	672	8.0%
Age 5 to 9 Years	364	8.2%	500	8.0%	656	7.8%
Age 10 to 14 Years	342	7.7%	471	7.6%	635	7.5%
Age 15 to 19 Years	313	7.0%	438	7.0%	595	7.1%
Age 20 to 24 Years	267	6.0%	379	6.1%	508	6.0%
Age 25 to 29 Years	259	5.8%	358	5.8%	480	5.7%
Age 30 to 34 Years	262	5.9%	360	5.8%	475	5.6%
Age 35 to 39 Years	243	5.4%	333	5.3%	440	5.2%
Age 40 to 44 Years	244	5.5%	336	5.4%	456	5.4%
Age 45 to 49 Years	262	5.9%	366	5.9%	503	6.0%
Age 50 to 54 Years	255	5.7%	360	5.8%	505	6.0%
Age 55 to 59 Years	269	6.0%	379	6.1%	516	6.1%
Age 60 to 64 Years	254	5.7%	355	5.7%	487	5.8%
Age 65 to 74 Years	464	10.4%	642	10.3%	864	10.3%
Age 75 to 84 Years	243	5.5%	350	5.6%	479	5.7%
Age 85 Years or Over	70	1.6%	99	1.6%	151	1.8%
Median Age	35.6		35.7		36.3	

Gender Age Distribution (2014)

Female Population	2,262	50.7%	3,143	50.4%	4,233	50.3%
Age 0 to 19 Years	683	30.2%	944	30.0%	1,252	29.6%
Age 20 to 64 Years	1,148	50.7%	1,599	50.9%	2,160	51.0%
Age 65 Years or Over	432	19.1%	600	19.1%	820	19.4%
Female Median Age	36.9		36.9		37.6	
Male Population	2,204	49.3%	3,088	49.6%	4,188	49.7%
Age 0 to 19 Years	691	31.3%	971	31.4%	1,305	31.2%
Age 20 to 64 Years	1,167	53.0%	1,627	52.7%	2,209	52.8%
Age 65 Years or Over	346	15.7%	490	15.9%	673	16.1%
Male Median Age	34.4		34.5		35.2	

This report was produced using data from private and government sources deemed to be reliable. The information herein is provided without representation or warranty.

EXPANDED PROFILE

2000-2010 Census, 2014 Estimates with 2019 Projections

Calculated using Proportional Block Groups

Lat/Lon: 27.3283/-98.6769

RF5

39 N State Highway 16

Hebbronville, TX

Household Income Distribution (2014)

	15 Miles		20 Miles		25 Miles	
HH Income \$200,000 or More	25	1.5%	34	1.5%	41	1.4%
HH Income \$150,000 to \$199,999	36	2.3%	47	2.1%	65	2.1%
HH Income \$100,000 to \$149,999	99	6.1%	138	6.1%	194	6.4%
HH Income \$75,000 to \$99,999	120	7.5%	177	7.9%	268	8.8%
HH Income \$50,000 to \$74,999	288	17.9%	415	18.5%	527	17.3%
HH Income \$35,000 to \$49,999	343	21.3%	400	17.8%	497	16.3%
HH Income \$25,000 to \$34,999	226	14.0%	309	13.8%	402	13.2%
HH Income \$15,000 to \$24,999	186	11.5%	295	13.1%	444	14.5%
HH Income Under \$15,000	289	17.9%	432	19.2%	613	20.1%
HH Income \$35,000 or More	910	56.5%	1,210	53.9%	1,592	52.2%
HH Income \$75,000 or More	280	17.4%	395	17.6%	568	18.6%

Housing (2014)

	15 Miles		20 Miles		25 Miles	
Total Housing Units	2,055		2,936		4,093	
Housing Units Occupied	1,611	78.4%	2,246	76.5%	3,051	74.5%
Housing Units Owner-Occupied	1,240	77.0%	1,732	77.1%	2,377	77.9%
Housing Units, Renter-Occupied	371	23.0%	514	22.9%	674	22.1%
Housing Units, Vacant	444	21.6%	690	23.5%	1,042	25.5%

Marital Status (2014)

	15 Miles		20 Miles		25 Miles	
Never Married	1,012	29.7%	1,423	29.9%	1,925	29.8%
Currently Married	1,477	43.4%	2,091	44.0%	2,832	43.9%
Separated	338	9.9%	448	9.4%	569	8.8%
Widowed	308	9.1%	418	8.8%	616	9.5%
Divorced	269	7.9%	374	7.9%	516	8.0%

Household Type (2014)

	15 Miles		20 Miles		25 Miles	
Population Family	3,900	87.3%	5,444	87.4%	7,349	87.3%
Population Non-Family	563	12.6%	782	12.6%	1,064	12.6%
Population Group Quarters	3	0.1%	5	0.1%	8	0.1%
Family Households	1,162	72.1%	1,626	72.4%	2,209	72.4%
Non-Family Households	449	27.9%	620	27.6%	842	27.6%
Married Couple with Children	397	26.9%	550	26.3%	739	26.1%
Average Family Household Size	3.4		3.3		3.3	

Household Size (2014)

	15 Miles		20 Miles		25 Miles	
1 Person Households	409	25.4%	564	25.1%	765	25.1%
2 Person Households	460	28.6%	650	28.9%	902	29.6%
3 Person Households	255	15.9%	359	16.0%	485	15.9%
4 Person Households	238	14.8%	327	14.6%	434	14.2%
5 Person Households	137	8.5%	194	8.6%	263	8.6%
6 or More Person Households	111	6.9%	152	6.8%	202	6.6%

Household Vehicles (2014)

	15 Miles		20 Miles		25 Miles	
Households with 0 Vehicles Available	99	6.2%	159	7.1%	271	8.9%
Households with 1 Vehicles Available	620	38.5%	848	37.7%	1,121	36.7%
Households with 2 or More Vehicles Available	892	55.3%	1,239	55.2%	1,660	54.4%
Total Vehicles Available	2,758		3,849		5,179	
Average Vehicles Per Household	1.7		1.7		1.7	

This report was produced using data from private and government sources deemed to be reliable. The information herein is provided without representation or warranty.

EXPANDED PROFILE

2000-2010 Census, 2014 Estimates with 2019 Projections

Calculated using Proportional Block Groups

Lat/Lon: 27.3283/-98.6769

RF5

39 N State Highway 16

Hebbronville, TX

Labor Force (2014)

	15 Miles	20 Miles	25 Miles
Estimated Labor Population Age 16 Years or Over	3,357	4,683	6,355
Estimated Civilian Employed	1,884 56.1%	2,547 54.4%	3,344 52.6%
Estimated Civilian Unemployed	77 2.3%	116 2.5%	156 2.5%
Estimated in Armed Forces	- -	- -	- -
Estimated Not in Labor Force	1,396 41.6%	2,021 43.2%	2,854 44.9%
Unemployment Rate	2.3%	2.5%	2.5%

Occupation (2010)

	15 Miles	20 Miles	25 Miles
Occupation: Population Age 16 Years or Over	1,531	2,121	2,889
Management, Business, Financial Operations	153 10.0%	215 10.1%	300 10.4%
Professional, Related	213 13.9%	308 14.5%	441 15.3%
Service	346 22.6%	478 22.6%	654 22.7%
Sales, Office	298 19.5%	415 19.6%	524 18.1%
Farming, Fishing, Forestry	41 2.6%	58 2.7%	76 2.6%
Construct, Extraction, Maintenance	250 16.4%	314 14.8%	431 14.9%
Production, Transport Material Moving	231 15.1%	334 15.7%	463 16.0%
White Collar Workers	663 43.3%	937 44.2%	1,265 43.8%
Blue Collar Workers	868 56.7%	1,184 55.8%	1,624 56.2%

Consumer Expenditure (2014)

	15 Miles	20 Miles	25 Miles
Total Household Expenditure	\$67.9 M	\$94.3 M	\$128 M
Total Non-Retail Expenditure	\$38.9 M 57.2%	\$54.0 M 57.2%	\$73.1 M 57.2%
Total Retail Expenditure	\$29.1 M 42.8%	\$40.3 M 42.8%	\$54.7 M 42.8%
Apparel	\$3.26 M 4.8%	\$4.53 M 4.8%	\$6.13 M 4.8%
Contributions	\$2.38 M 3.5%	\$3.29 M 3.5%	\$4.45 M 3.5%
Education	\$1.50 M 2.2%	\$2.10 M 2.2%	\$2.85 M 2.2%
Entertainment	\$3.75 M 5.5%	\$5.21 M 5.5%	\$7.06 M 5.5%
Food and Beverages	\$10.7 M 15.7%	\$14.9 M 15.8%	\$20.1 M 15.8%
Furnishings and Equipment	\$2.85 M 4.2%	\$3.95 M 4.2%	\$5.36 M 4.2%
Gifts	\$1.69 M 2.5%	\$2.34 M 2.5%	\$3.18 M 2.5%
Health Care	\$4.34 M 6.4%	\$6.02 M 6.4%	\$8.17 M 6.4%
Household Operations	\$2.30 M 3.4%	\$3.20 M 3.4%	\$4.33 M 3.4%
Miscellaneous Expenses	\$1.16 M 1.7%	\$1.60 M 1.7%	\$2.17 M 1.7%
Personal Care	\$987 K 1.5%	\$1.37 M 1.5%	\$1.86 M 1.5%
Personal Insurance	\$656 K 1.0%	\$910 K 1.0%	\$1.23 M 1.0%
Reading	\$220 K 0.3%	\$306 K 0.3%	\$414 K 0.3%
Shelter	\$13.1 M 19.2%	\$18.2 M 19.2%	\$24.6 M 19.3%
Tobacco	\$494 K 0.7%	\$684 K 0.7%	\$927 K 0.7%
Transportation	\$13.6 M 20.1%	\$18.9 M 20.1%	\$25.6 M 20.0%
Utilities	\$4.95 M 7.3%	\$6.87 M 7.3%	\$9.31 M 7.3%

Educational Attainment (2014)

	15 Miles	20 Miles	25 Miles
Adult Population Age 25 Years or Over	2,823	3,933	5,350
Elementary (Grade Level 0 to 8)	441 15.6%	648 16.5%	964 18.0%
Some High School (Grade Level 9 to 11)	486 17.2%	672 17.1%	900 16.8%
High School Graduate	1,119 39.6%	1,490 37.9%	1,916 35.8%
Some College	467 16.5%	682 17.4%	939 17.5%
Associate Degree Only	23 0.8%	43 1.1%	87 1.6%
Bachelor Degree Only	199 7.0%	257 6.5%	347 6.5%
Graduate Degree	88 3.1%	140 3.6%	198 3.7%

This report was produced using data from private and government sources deemed to be reliable. The information herein is provided without representation or warranty.

EXPANDED PROFILE

2000-2010 Census, 2014 Estimates with 2019 Projections

Calculated using Proportional Block Groups

Lat/Lon: 27.3283/-98.6769

RF5

39 N State Highway 16

Hebbronville, TX

Units In Structure (2010)

	15 Miles		20 Miles		25 Miles	
1 Detached Unit	1,313	82.9%	1,812	82.1%	2,466	82.3%
1 Attached Unit	29	1.8%	47	2.1%	58	1.9%
2 to 4 Units	68	4.3%	99	4.5%	119	4.0%
5 to 9 Units	5	0.3%	8	0.4%	19	0.6%
10 to 19 Units	6	0.4%	9	0.4%	15	0.5%
20 to 49 Units	7	0.5%	11	0.5%	13	0.4%
50 or More Units	4	0.3%	6	0.3%	8	0.3%
Mobile Home or Trailer	147	9.3%	209	9.5%	293	9.8%
Other Structure	3	0.2%	6	0.2%	6	0.2%

Homes Built By Year (2010)

	15 Miles		20 Miles		25 Miles	
Homes Built 2005 or later	85	5.4%	113	5.1%	146	4.9%
Homes Built 2000 to 2004	75	4.7%	106	4.8%	151	5.0%
Homes Built 1990 to 1999	294	18.6%	388	17.6%	516	17.2%
Homes Built 1980 to 1989	227	14.3%	333	15.1%	461	15.4%
Homes Built 1970 to 1979	262	16.6%	369	16.7%	503	16.8%
Homes Built 1960 to 1969	205	12.9%	270	12.2%	351	11.7%
Homes Built 1950 to 1959	134	8.5%	188	8.5%	287	9.6%
Homes Built Before 1949	301	19.0%	440	19.9%	583	19.4%

Home Values (2010)

	15 Miles		20 Miles		25 Miles	
Home Values \$1,000,000 or More	2	0.1%	2	0.1%	4	0.2%
Home Values \$500,000 to \$999,999	5	0.4%	13	0.8%	37	1.6%
Home Values \$400,000 to \$499,999	4	0.3%	6	0.4%	9	0.4%
Home Values \$300,000 to \$399,999	15	1.3%	22	1.3%	29	1.2%
Home Values \$200,000 to \$299,999	64	5.3%	79	4.6%	98	4.2%
Home Values \$150,000 to \$199,999	96	7.9%	128	7.5%	159	6.8%
Home Values \$100,000 to \$149,999	221	18.2%	286	16.9%	381	16.4%
Home Values \$70,000 to \$99,999	256	21.1%	342	20.2%	434	18.6%
Home Values \$50,000 to \$69,999	158	13.0%	219	12.9%	293	12.6%
Home Values \$25,000 to \$49,999	210	17.3%	326	19.2%	458	19.7%
Home Values Under \$25,000	183	15.1%	272	16.0%	425	18.3%
Owner-Occupied Median Home Value	\$77,774		\$73,153		\$68,885	
Renter-Occupied Median Rent	\$422		\$411		\$417	

Transportation To Work (2010)

	15 Miles		20 Miles		25 Miles	
Drive to Work Alone	1,121	74.1%	1,579	75.5%	2,132	75.1%
Drive to Work in Carpool	231	15.3%	296	14.1%	398	14.0%
Travel to Work by Public Transportation	4	0.3%	7	0.3%	10	0.4%
Drive to Work on Motorcycle	-	-	-	-	-	-
Walk or Bicycle to Work	28	1.9%	48	2.3%	64	2.2%
Other Means	14	1.0%	23	1.1%	34	1.2%
Work at Home	114	7.6%	140	6.7%	200	7.0%

Travel Time (2010)

	15 Miles		20 Miles		25 Miles	
Travel to Work in 14 Minutes or Less	803	57.4%	1,087	55.7%	1,397	53.0%
Travel to Work in 15 to 29 Minutes	155	11.1%	257	13.2%	375	14.2%
Travel to Work in 30 to 59 Minutes	260	18.6%	344	17.6%	490	18.6%
Travel to Work in 60 Minutes or More	181	12.9%	265	13.6%	376	14.3%
Average Minutes Travel to Work	12.4		13.1		14.4	

This report was produced using data from private and government sources deemed to be reliable. The information herein is provided without representation or warranty.