

COCCA DEVELOPMENT

RETAIL SPACE FOR LEASE

2221 EAST CEDAR STREET

RAWLINS, WY 82301



- Join Tractor Supply Company & Dollar Tree
- Loading docks in back of building
- Large parking lot with ample parking
- Located approximately 1.5 miles from the Lincoln Highway (I-80)

AVAILABLE SUITE AREA—\$10/square foot NNN:

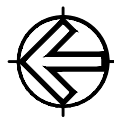
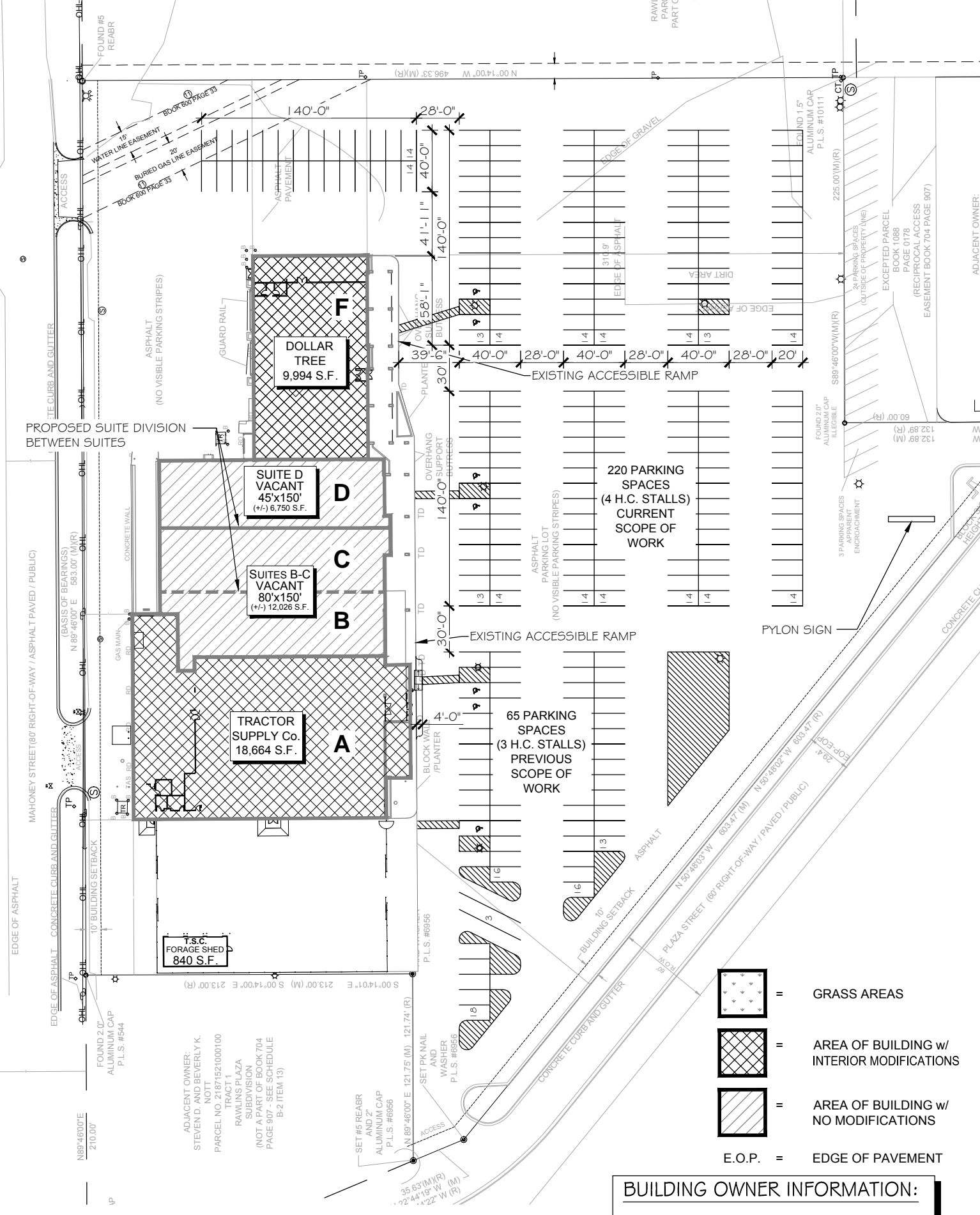
Approximately 19,500 square feet*

*Can be reduced for smaller space per needs

NNN: Base rent plus prorata share of Real Estate Taxes, Insurance, and Common Area expenses, including but not limited to snow removal, lawn care, and parking lot maintenance. Tenant pays separately metered utilities for gas, electric, water, sewer, & trash removal.

CALL 330-729-1010 FOR MORE INFORMATION

www.coccadevelopment.com



GENERAL SITE PLAN

SCALE: 1" = 80'-0"

BUILDING OWNER INFORMATION:
 COCCA DEVELOPMENT, LTD.
 100 DEBARTOLO PLACE - SUITE 400
 YOUNGSTOWN, OHIO 44512



This map was produced using data from private and government sources deemed to be reliable. The information herein is provided without representation or warranty.

Map data ©2015 Google, Imagery ©2015 DigitalGlobe, USDA Farm Service Agency

Logos are for identification purposes only and may be trademarks of their respective companies.

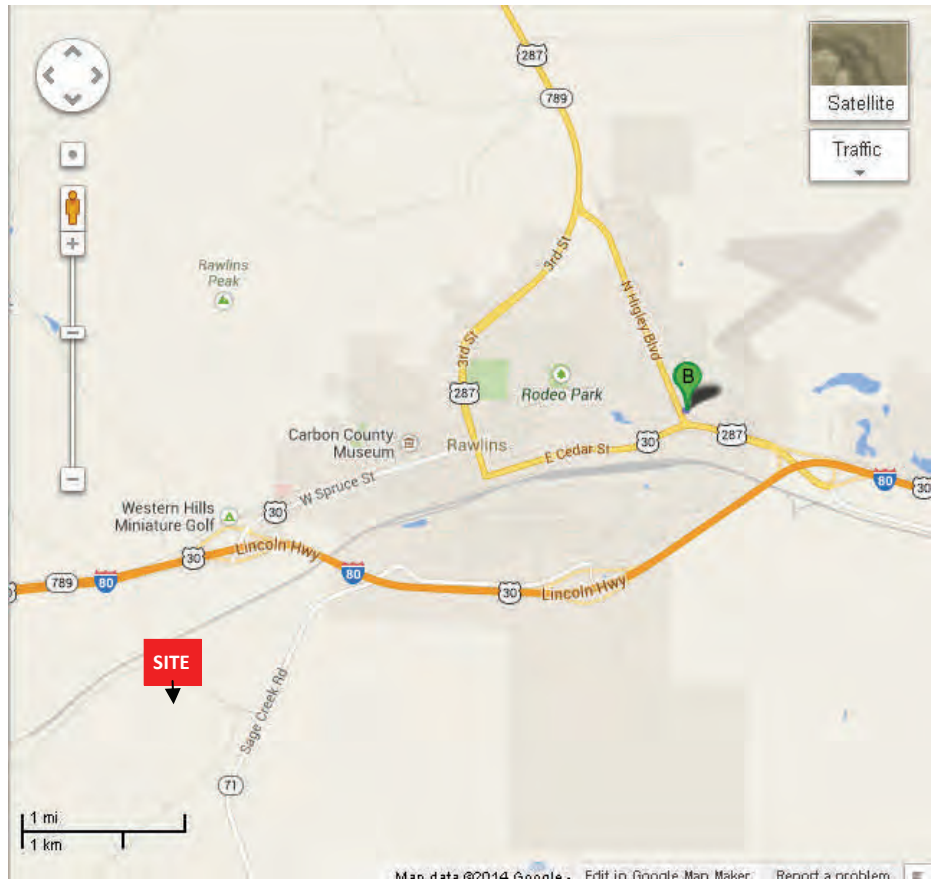
Lat: 41.79608 Long: -107.21770 Zoom: 2.18 mi

2201 East Cedar Street

Rawlins, WY 82301

The site is ideally located on East Cedar Street, approximately 2 miles north of I-80, 2.5 miles from Sinclair, and 5.7 miles from Saratoga.

The average daily traffic count on East Cedar Street in front of the center is approximately 7,000.



The city is served by the Rawlins Municipal Airport. It was named after General John A. Rawlins and eventually became the county seat. Some of the most common industries include manufacturing (21%), public administration (14%), and construction (13%).



COCCA DEVELOPMENT, LTD

2201 East Cedar Street

Rawlins, WY 82301

AT A GLANCE

- ◆ “Rawlins Red” is a red pigment containing hematite, an oxide of iron that was mined near Rawlins. Paint containing Rawlins Red has anti-rust properties, and is thought to have been used as the original paint on the Brooklyn Bridge
- ◆ Located approximately 2.5 miles from Sinclair, WY and approximately 5.7 miles from Saratoga, WY
- ◆ Wyoming Department of Corrections State Penitentiary is located in Rawlins
- ◆ Larry Wilcox, co-star of 1970’s television show CHIPS grew up in Rawlins
- ◆ Most common industries include manufacturing (21%), public administration (14%), and construction (13%).

GRAPHIC PROFILE

2000-2010 Census, 2014 Estimates with 2019 Projections

Calculated using Proportional Block Groups

Lat/Lon: 41.7924/-107.2153

RGRAP3

2221 E Cedar St

Rawlins, WY

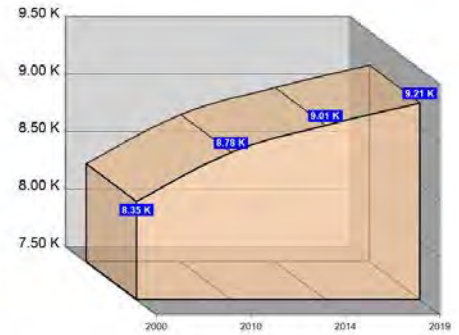
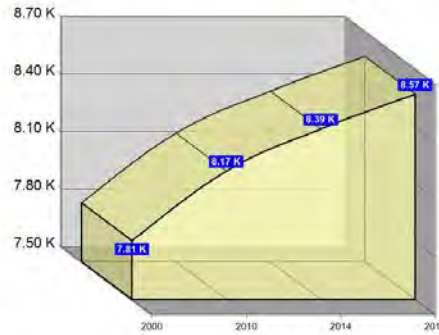
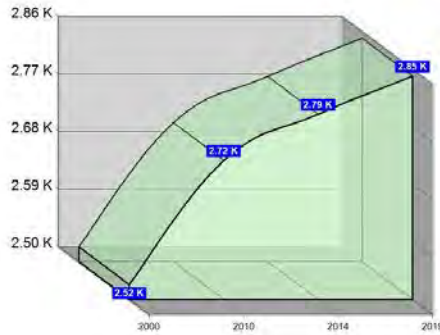
1 Mile

3 Miles

5 Miles

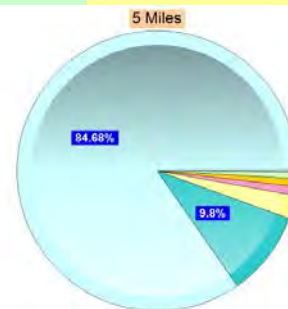
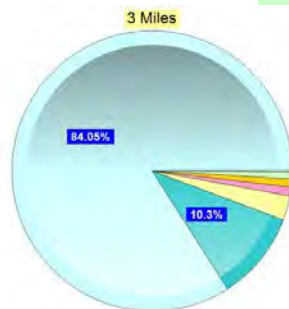
Population

Estimated Population (2014)	2,790	8,389	9,013
Projected Population (2019)	2,850	8,570	9,208
Census Population (2010)	2,717	8,170	8,779
Census Population (2000)	2,523	7,807	8,352
Projected Annual Growth (2014-2019)	60 0.4%	181 0.4%	195 0.4%
Historical Annual Growth (2010-2014)	72 1.8%	219 1.1%	235 1.2%
Historical Annual Growth (2000-2010)	194 0.8%	363 0.5%	427 0.5%
Estimated Population Density (2014)	889 <i>psm</i>	297 <i>psm</i>	115 <i>psm</i>
Trade Area Size	3.1 <i>sq mi</i>	28.3 <i>sq mi</i>	78.5 <i>sq mi</i>



Race and Ethnicity (2014)

Not Hispanic or Latino Population	1,931 69.2%	6,152 73.3%	6,707 74.4%
White	1,840 95.3%	5,856 95.2%	6,396 95.4%
Black or African American	27 1.4%	65 1.1%	67 1.0%
American Indian or Alaska Native	15 0.8%	53 0.9%	56 0.8%
Asian	17 0.9%	79 1.3%	86 1.3%
Hawaiian or Pacific Islander	- -	12 0.2%	12 0.2%
Other Race	- -	3 -	3 -
Two or More Races	32 1.6%	85 1.4%	88 1.3%
Hispanic or Latino Population	859 30.8%	2,237 26.7%	2,306 25.6%
White	428 49.8%	1,195 53.4%	1,237 53.6%
Black or African American	- -	2 0.1%	2 0.1%
American Indian or Alaska Native	12 1.3%	26 1.2%	26 1.1%
Asian	- -	6 0.3%	6 0.3%
Hispanic Hawaiian or Pacific Islander	- -	- -	- -
Other Race	363 42.3%	858 38.3%	880 38.2%
Two or More Races	57 6.6%	150 6.7%	155 6.7%



White Black or African American American Indian or Alaska Native Asian Hawaiian or Pacific Islander Other Race 2+ Races

This report was produced using data from private and government sources deemed to be reliable. The information herein is provided without representation or warranty.

GRAPHIC PROFILE

2000-2010 Census, 2014 Estimates with 2019 Projections

Calculated using Proportional Block Groups

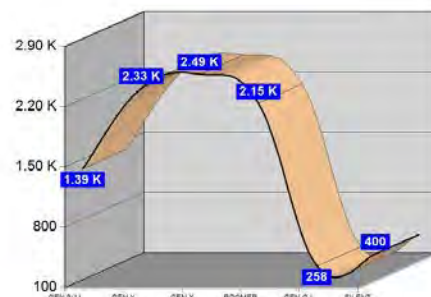
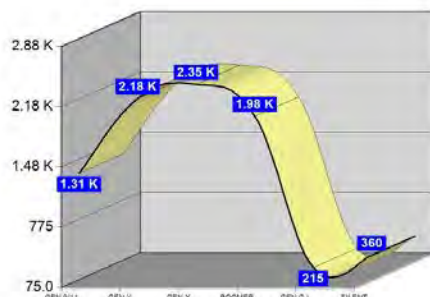
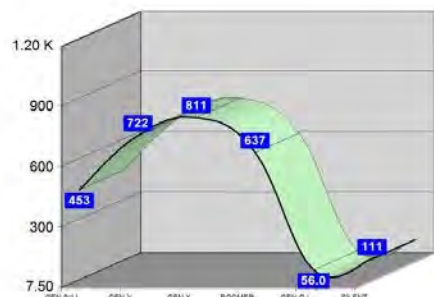
Lat/Lon: 41.7924/-107.2153

RGRAP3

2221 E Cedar St Rawlins, WY

	1 Mile	3 Miles	5 Miles
Age Distribution (2014)			
Age Under 5 Years	224 8.0%	661 7.9%	707 7.8%
Age 5 to 9 Years	229 8.2%	651 7.8%	683 7.6%
Age 10 to 14 Years	209 7.5%	597 7.1%	631 7.0%
Age 15 to 19 Years	198 7.1%	548 6.5%	584 6.5%
Age 20 to 24 Years	204 7.3%	570 6.8%	605 6.7%
Age 25 to 29 Years	200 7.2%	631 7.5%	670 7.4%
Age 30 to 34 Years	220 7.9%	632 7.5%	667 7.4%
Age 35 to 39 Years	184 6.6%	566 6.8%	601 6.7%
Age 40 to 44 Years	161 5.8%	490 5.8%	526 5.8%
Age 45 to 49 Years	156 5.6%	493 5.9%	533 5.9%
Age 50 to 54 Years	159 5.7%	556 6.6%	597 6.6%
Age 55 to 59 Years	185 6.6%	580 6.9%	634 7.0%
Age 60 to 64 Years	185 6.6%	522 6.2%	569 6.3%
Age 65 to 69 Years	108 3.9%	318 3.8%	350 3.9%
Age 70 to 74 Years	64 2.3%	217 2.6%	240 2.7%
Age 75 to 79 Years	47 1.7%	143 1.7%	160 1.8%
Age 80 to 84 Years	32 1.1%	114 1.4%	134 1.5%
Age 85 Years or Over	24 0.9%	102 1.2%	124 1.4%
Median Age	31.9	33.7	34.3

	1 Mile	3 Miles	5 Miles
Generation (2014)			
Generation 9/11 Millennials (Age Under 10 Years)	453 16.3%	1,312 15.6%	1,390 15.4%
Gen Y to Echo Boomers (Age 10 to 29 Years)	811 29.1%	2,346 28.0%	2,490 27.6%
Gen Xers (Age 30 to 49 Years)	722 25.9%	2,181 26.0%	2,327 25.8%
Baby Boomers (Age 50 to 69 Years)	637 22.8%	1,975 23.5%	2,149 23.8%
Silent Generation (Age 70 to 79 Years)	111 4.0%	360 4.3%	400 4.4%
G.I. Generation (Age 80 Years or Over)	56 2.0%	215 2.6%	258 2.9%



This report was produced using data from private and government sources deemed to be reliable. The information herein is provided without representation or warranty.

GRAPHIC PROFILE

2000-2010 Census, 2014 Estimates with 2019 Projections

Calculated using Proportional Block Groups

Lat/Lon: 41.7924/-107.2153

RGRAP3

2221 E Cedar St

Rawlins, WY

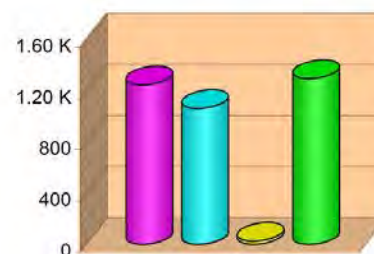
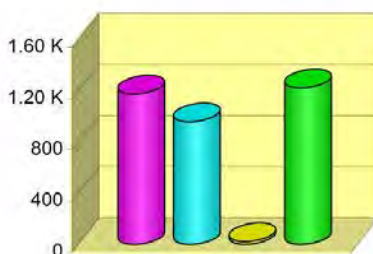
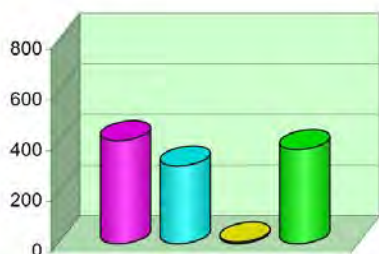
1 Mile

3 Miles

5 Miles

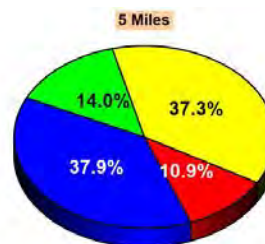
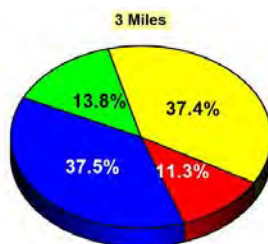
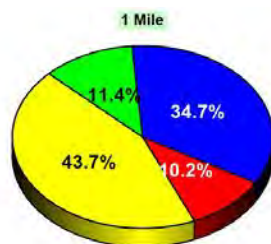
Household Type (2014)

	1 Mile	3 Miles	5 Miles
Total Households	1,095	3,381	3,631
Family Households	715 28.1%	2,135 28.4%	2,310 29.3%
Family Households with Children	408 57.0%	1,176 55.1%	1,248 54.0%
Family Households No Children	308 43.0%	959 44.9%	1,063 46.0%
Non-Family Households	379 28.1%	1,246 28.4%	1,321 29.3%
Non-Family Households with Children	7 1.7%	22 1.8%	25 1.9%
Non-Family Households No Children	373 98.3%	1,224 98.2%	1,296 98.1%



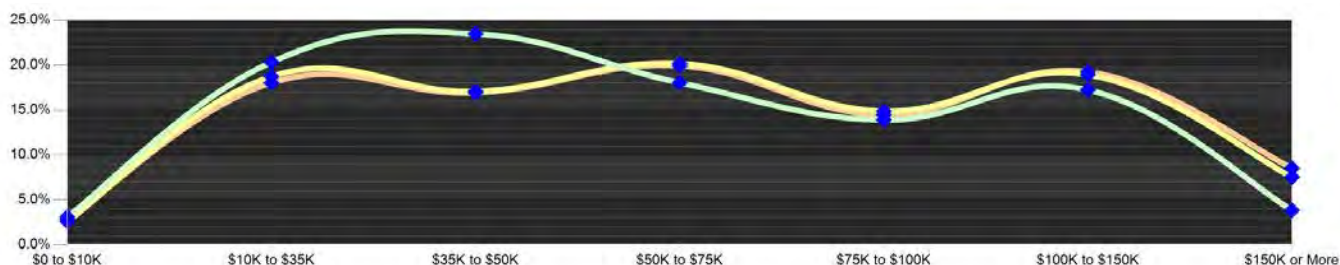
Education Attainment (2014)

	1 Mile	3 Miles	5 Miles
Elementary or Some High School	171 10.2%	596 11.3%	619 10.9%
High School Graduate	737 43.7%	1,978 37.4%	2,126 37.3%
Some College or Associate Degree	584 34.7%	1,983 37.5%	2,159 37.9%
Bachelor or Graduate Degree	193 11.4%	730 13.8%	795 14.0%



Household Income (2014)

	1 Mile	3 Miles	5 Miles
Estimated Average Household Income	\$62,545	\$65,638	\$67,274
Estimated Median Household Income	\$54,857	\$60,571	\$61,494
HH Income Under \$10,000	34 3.1%	88 2.6%	102 2.8%
HH Income \$10,000 to \$34,999	223 20.3%	634 18.7%	655 18.0%
HH Income \$35,000 to \$49,999	257 23.5%	578 17.1%	615 16.9%
HH Income \$50,000 to \$74,999	198 18.1%	682 20.2%	724 19.9%
HH Income \$75,000 to \$99,999	189 17.2%	640 18.9%	699 19.3%
HH Income \$100,000 to \$149,999	189 17.2%	640 18.9%	699 19.3%
HH Income \$150,000 or More	42 3.8%	255 7.5%	310 8.5%



This report was produced using data from private and government sources deemed to be reliable. The information herein is provided without representation or warranty.

EXPANDED PROFILE

2000-2010 Census, 2014 Estimates with 2019 Projections

Calculated using Proportional Block Groups

Lat/Lon: 41.7924/-107.2153

RF5

2221 E Cedar St Rawlins, WY	1 Mile	3 Miles	5 Miles
Population			
Estimated Population (2014)	2,790	8,389	9,013
Projected Population (2019)	2,850	8,570	9,208
Census Population (2010)	2,717	8,170	8,779
Census Population (2000)	2,523	7,807	8,352
Projected Annual Growth (2014 to 2019)	60 0.4%	181 0.4%	195 0.4%
Historical Annual Growth (2010 to 2014)	72 0.7%	219 0.7%	235 0.7%
Historical Annual Growth (2000 to 2010)	194 0.8%	363 0.5%	427 0.5%
Estimated Population Density (2014)	889 <i>psm</i>	297 <i>psm</i>	115 <i>psm</i>
Trade Area Size	3.14 <i>sq mi</i>	28.26 <i>sq mi</i>	78.49 <i>sq mi</i>
Households			
Estimated Households (2014)	1,095	3,381	3,631
Projected Households (2019)	1,116	3,447	3,703
Census Households (2010)	1,060	3,272	3,515
Census Households (2000)	1,010	3,167	3,373
Estimated Households with Children (2014)	414 37.8%	1,198 35.4%	1,273 35.1%
Estimated Average Household Size (2014)	2.50	2.46	2.45
Average Household Income			
Estimated Average Household Income (2014)	\$64,178	\$75,646	\$78,456
Projected Average Household Income (2019)	\$70,199	\$82,534	\$85,483
Estimated Average Family Income (2014)	\$74,087	\$87,069	\$91,244
Median Household Income			
Estimated Median Household Income (2014)	\$58,615	\$66,401	\$68,319
Projected Median Household Income (2019)	\$63,484	\$70,991	\$73,024
Estimated Median Family Income (2014)	\$68,107	\$78,084	\$80,258
Per Capita Income			
Estimated Per Capita Income (2014)	\$25,471	\$30,634	\$31,789
Projected Per Capita Income (2019)	\$27,793	\$33,352	\$34,564
Estimated Per Capita income 5 Year Growth	\$2,322 9.1%	\$2,718 8.9%	\$2,775 8.7%
Estimated Average Household Net Worth (2014)	\$398,464	\$391,357	\$399,085
Daytime Demos (2014)			
Total Businesses	127	487	511
Total Employees	1,222	4,001	4,377
Company Headquarter Businesses	- 0.1%	4 0.8%	4 0.8%
Company Headquarter Employees	3 0.3%	97 2.4%	97 2.2%
Employee Population per Business	9.6	8.2	8.6
Residential Population per Business	22.0	17.2	17.6

This report was produced using data from private and government sources deemed to be reliable. The information herein is provided without representation or warranty.

EXPANDED PROFILE

2000-2010 Census, 2014 Estimates with 2019 Projections

Calculated using Proportional Block Groups

Lat/Lon: 41.7924/-107.2153

RF5

2221 E Cedar St

Rawlins, WY

Race & Ethnicity

	1 Mile		3 Miles		5 Miles	
White (2014)	2,267	81.3%	7,051	84.1%	7,632	84.7%
Black or African American (2014)	27	1.0%	67	0.8%	69	0.8%
American Indian or Alaska Native (2014)	27	1.0%	79	0.9%	82	0.9%
Asian (2014)	17	0.6%	85	1.0%	92	1.0%
Hawaiian or Pacific Islander (2014)	-	-	12	0.1%	12	0.1%
Other Race (2014)	363	13.0%	861	10.3%	883	9.8%
Two or More Races (2014)	89	3.2%	235	2.8%	243	2.7%
Not Hispanic or Latino Population (2014)	1,931	69.2%	6,152	73.3%	6,707	74.4%
Hispanic or Latino Population (2014)	859	30.8%	2,237	26.7%	2,306	25.6%
Not Hispanic or Latino Population (2019)	1,936	67.9%	6,191	72.2%	6,756	73.4%
Hispanic or Latino Population (2019)	914	32.1%	2,379	27.8%	2,452	26.6%
Not Hispanic or Latino Population (2010)	1,907	70.2%	6,061	74.2%	6,605	75.2%
Hispanic or Latino Population (2010)	810	29.8%	2,109	25.8%	2,174	24.8%
Not Hispanic or Latino Population (2000)	1,917	76.0%	6,084	77.9%	6,561	78.6%
Hispanic or Latino Population (2000)	607	24.0%	1,723	22.1%	1,791	21.4%
Projected Hispanic Annual Growth (2014 to 2019)	54	1.3%	142	1.3%	146	1.3%
Historic Hispanic Annual Growth (2000 to 2014)	253	3.0%	514	2.1%	515	2.1%

Age Distribution (2014)

Age Under 5	224	8.0%	661	7.9%	707	7.8%
Age 5 to 9 Years	229	8.2%	651	7.8%	683	7.6%
Age 10 to 14 Years	209	7.5%	597	7.1%	631	7.0%
Age 15 to 19 Years	198	7.1%	548	6.5%	584	6.5%
Age 20 to 24 Years	204	7.3%	570	6.8%	605	6.7%
Age 25 to 29 Years	200	7.2%	631	7.5%	670	7.4%
Age 30 to 34 Years	220	7.9%	632	7.5%	667	7.4%
Age 35 to 39 Years	184	6.6%	566	6.8%	601	6.7%
Age 40 to 44 Years	161	5.8%	490	5.8%	526	5.8%
Age 45 to 49 Years	156	5.6%	493	5.9%	533	5.9%
Age 50 to 54 Years	159	5.7%	556	6.6%	597	6.6%
Age 55 to 59 Years	185	6.6%	580	6.9%	634	7.0%
Age 60 to 64 Years	185	6.6%	522	6.2%	569	6.3%
Age 65 to 74 Years	172	6.2%	535	6.4%	590	6.5%
Age 75 to 84 Years	78	2.8%	257	3.1%	293	3.3%
Age 85 Years or Over	24	0.9%	102	1.2%	124	1.4%
Median Age	31.9		33.7		34.3	

Gender Age Distribution (2014)

Female Population	1,371	49.1%	4,065	48.5%	4,374	48.5%
Age 0 to 19 Years	423	30.8%	1,188	29.2%	1,261	28.8%
Age 20 to 64 Years	804	58.7%	2,408	59.2%	2,583	59.1%
Age 65 Years or Over	144	10.5%	469	11.5%	529	12.1%
Female Median Age	32.5		34.0		34.7	
Male Population	1,419	50.9%	4,324	51.5%	4,639	51.5%
Age 0 to 19 Years	437	30.8%	1,269	29.3%	1,344	29.0%
Age 20 to 64 Years	851	60.0%	2,630	60.8%	2,818	60.7%
Age 65 Years or Over	131	9.2%	425	9.8%	478	10.3%
Male Median Age	31.5		33.5		34.0	

This report was produced using data from private and government sources deemed to be reliable. The information herein is provided without representation or warranty.

EXPANDED PROFILE

2000-2010 Census, 2014 Estimates with 2019 Projections

Calculated using Proportional Block Groups

Lat/Lon: 41.7924/-107.2153

RF5

2221 E Cedar St

Rawlins, WY

Household Income Distribution (2014)

	1 Mile	3 Miles	5 Miles
HH Income \$200,000 or More	9 0.9%	92 2.7%	120 3.3%
HH Income \$150,000 to \$199,999	33 3.0%	163 4.8%	191 5.3%
HH Income \$100,000 to \$149,999	189 17.2%	640 18.9%	699 19.3%
HH Income \$75,000 to \$99,999	152 13.9%	503 14.9%	526 14.5%
HH Income \$50,000 to \$74,999	198 18.1%	682 20.2%	724 19.9%
HH Income \$35,000 to \$49,999	257 23.5%	578 17.1%	615 16.9%
HH Income \$25,000 to \$34,999	77 7.0%	246 7.3%	261 7.2%
HH Income \$15,000 to \$24,999	107 9.8%	278 8.2%	282 7.8%
HH Income Under \$15,000	72 6.6%	198 5.9%	214 5.9%
HH Income \$35,000 or More	838 76.6%	2,659 78.6%	2,874 79.1%
HH Income \$75,000 or More	383 35.0%	1,399 41.4%	1,536 42.3%

Housing (2014)

	1 Mile	3 Miles	5 Miles
Total Housing Units	1,202	3,791	4,067
Housing Units Occupied	1,095 91.1%	3,381 89.2%	3,631 89.3%
Housing Units Owner-Occupied	719 65.7%	2,296 67.9%	2,500 68.9%
Housing Units, Renter-Occupied	376 34.3%	1,085 32.1%	1,131 31.1%
Housing Units, Vacant	107 8.9%	410 10.8%	436 10.7%

Marital Status (2014)

	1 Mile	3 Miles	5 Miles
Never Married	458 21.5%	1,338 20.7%	1,433 20.5%
Currently Married	1,162 54.6%	3,811 58.8%	4,162 59.5%
Separated	121 5.7%	210 3.2%	215 3.1%
Widowed	113 5.3%	265 4.1%	275 3.9%
Divorced	273 12.8%	855 13.2%	908 13.0%

Household Type (2014)

	1 Mile	3 Miles	5 Miles
Population Family	2,204 79.0%	6,549 78.1%	7,035 78.1%
Population Non-Family	537 19.3%	1,756 20.9%	1,862 20.7%
Population Group Quarters	49 1.8%	85 1.0%	116 1.3%
Family Households	715 65.3%	2,135 63.2%	2,310 63.6%
Non-Family Households	379 34.7%	1,246 36.8%	1,321 36.4%
Married Couple with Children	237 20.4%	762 20.0%	817 19.6%
Average Family Household Size	3.1	3.1	3.0

Household Size (2014)

	1 Mile	3 Miles	5 Miles
1 Person Households	302 27.6%	997 29.5%	1,057 29.1%
2 Person Households	352 32.2%	1,090 32.2%	1,197 33.0%
3 Person Households	192 17.5%	538 15.9%	574 15.8%
4 Person Households	133 12.2%	400 11.8%	431 11.9%
5 Person Households	76 7.0%	238 7.0%	250 6.9%
6 or More Person Households	40 3.6%	117 3.5%	123 3.4%

Household Vehicles (2014)

	1 Mile	3 Miles	5 Miles
Households with 0 Vehicles Available	26 2.4%	101 3.0%	108 3.0%
Households with 1 Vehicles Available	422 38.6%	927 27.4%	977 26.9%
Households with 2 or More Vehicles Available	647 59.1%	2,352 69.6%	2,546 70.1%
Total Vehicles Available	2,118	7,346	7,919
Average Vehicles Per Household	1.9	2.2	2.2

This report was produced using data from private and government sources deemed to be reliable. The information herein is provided without representation or warranty.

EXPANDED PROFILE

2000-2010 Census, 2014 Estimates with 2019 Projections

Calculated using Proportional Block Groups

Lat/Lon: 41.7924/-107.2153

RF5

2221 E Cedar St

Rawlins, WY

Labor Force (2014)

	1 Mile	3 Miles	5 Miles
Estimated Labor Population Age 16 Years or Over	2,033	6,273	6,749
Estimated Civilian Employed	1,448 71.2%	4,341 69.2%	4,657 69.0%
Estimated Civilian Unemployed	62 3.1%	204 3.3%	220 3.3%
Estimated in Armed Forces	1 -	1 -	1 -
Estimated Not in Labor Force	523 25.7%	1,726 27.5%	1,871 27.7%
Unemployment Rate	3.1%	3.3%	3.3%

Occupation (2010)

	1 Mile	3 Miles	5 Miles
Occupation: Population Age 16 Years or Over	1,513	4,385	4,654
Management, Business, Financial Operations	114 7.6%	368 8.4%	411 8.8%
Professional, Related	238 15.8%	727 16.6%	768 16.5%
Service	310 20.5%	770 17.6%	800 17.2%
Sales, Office	351 23.2%	1,125 25.6%	1,221 26.2%
Farming, Fishing, Forestry	6 0.4%	15 0.3%	15 0.3%
Construct, Extraction, Maintenance	219 14.4%	696 15.9%	719 15.5%
Production, Transport Material Moving	275 18.2%	685 15.6%	720 15.5%
White Collar Workers	704 46.5%	2,220 50.6%	2,400 51.6%
Blue Collar Workers	810 53.5%	2,165 49.4%	2,254 48.4%

Consumer Expenditure (2014)

	1 Mile	3 Miles	5 Miles
Total Household Expenditure	\$56.7 M	\$196 M	\$216 M
Total Non-Retail Expenditure	\$32.6 M 57.5%	\$113 M 57.6%	\$125 M 57.6%
Total Retail Expenditure	\$24.1 M 42.5%	\$83.2 M 42.4%	\$91.6 M 42.4%
Apparel	\$2.70 M 4.8%	\$9.37 M 4.8%	\$10.3 M 4.8%
Contributions	\$1.98 M 3.5%	\$7.28 M 3.7%	\$8.15 M 3.8%
Education	\$1.31 M 2.3%	\$4.77 M 2.4%	\$5.33 M 2.5%
Entertainment	\$3.16 M 5.6%	\$11.0 M 5.6%	\$12.1 M 5.6%
Food and Beverages	\$8.74 M 15.4%	\$29.9 M 15.2%	\$32.8 M 15.2%
Furnishings and Equipment	\$2.48 M 4.4%	\$8.71 M 4.4%	\$9.62 M 4.4%
Gifts	\$1.47 M 2.6%	\$5.29 M 2.7%	\$5.89 M 2.7%
Health Care	\$3.50 M 6.2%	\$11.8 M 6.0%	\$13.0 M 6.0%
Household Operations	\$1.99 M 3.5%	\$7.09 M 3.6%	\$7.87 M 3.6%
Miscellaneous Expenses	\$959 K 1.7%	\$3.28 M 1.7%	\$3.60 M 1.7%
Personal Care	\$825 K 1.5%	\$2.84 M 1.4%	\$3.12 M 1.4%
Personal Insurance	\$564 K 1.0%	\$2.02 M 1.0%	\$2.25 M 1.0%
Reading	\$187 K 0.3%	\$647 K 0.3%	\$712 K 0.3%
Shelter	\$10.9 M 19.2%	\$38.0 M 19.3%	\$41.9 M 19.4%
Tobacco	\$378 K 0.7%	\$1.23 M 0.6%	\$1.34 M 0.6%
Transportation	\$11.5 M 20.4%	\$39.6 M 20.2%	\$43.4 M 20.1%
Utilities	\$4.01 M 7.1%	\$13.5 M 6.9%	\$14.8 M 6.9%

Educational Attainment (2014)

	1 Mile	3 Miles	5 Miles
Adult Population Age 25 Years or Over	1,685	5,288	5,700
Elementary (Grade Level 0 to 8)	42 2.5%	195 3.7%	203 3.6%
Some High School (Grade Level 9 to 11)	129 7.7%	401 7.6%	416 7.3%
High School Graduate	737 43.7%	1,978 37.4%	2,126 37.3%
Some College	390 23.2%	1,347 25.5%	1,472 25.8%
Associate Degree Only	194 11.5%	636 12.0%	687 12.1%
Bachelor Degree Only	145 8.6%	513 9.7%	542 9.5%
Graduate Degree	48 2.9%	218 4.1%	253 4.4%

This report was produced using data from private and government sources deemed to be reliable. The information herein is provided without representation or warranty.

EXPANDED PROFILE

2000-2010 Census, 2014 Estimates with 2019 Projections

Calculated using Proportional Block Groups

Lat/Lon: 41.7924/-107.2153

RF5

2221 E Cedar St Rawlins, WY	1 Mile		3 Miles		5 Miles	
Units In Structure (2010)						
1 Detached Unit	522	49.2%	2,134	65.2%	2,328	66.2%
1 Attached Unit	112	10.6%	186	5.7%	186	5.3%
2 to 4 Units	91	8.6%	242	7.4%	243	6.9%
5 to 9 Units	14	1.3%	151	4.6%	158	4.5%
10 to 19 Units	4	0.4%	25	0.8%	28	0.8%
20 to 49 Units	89	8.4%	145	4.4%	156	4.4%
50 or More Units	2	0.2%	7	0.2%	7	0.2%
Mobile Home or Trailer	225	21.2%	383	11.7%	407	11.6%
Other Structure	-	-	1	-	1	-
Homes Built By Year (2010)						
Homes Built 2005 or later	96	9.0%	210	6.4%	232	6.6%
Homes Built 2000 to 2004	44	4.1%	141	4.3%	157	4.5%
Homes Built 1990 to 1999	57	5.4%	212	6.5%	240	6.8%
Homes Built 1980 to 1989	175	16.5%	384	11.7%	418	11.9%
Homes Built 1970 to 1979	344	32.5%	820	25.1%	871	24.8%
Homes Built 1960 to 1969	95	8.9%	256	7.8%	272	7.7%
Homes Built 1950 to 1959	69	6.5%	484	14.8%	541	15.4%
Homes Built Before 1949	181	17.1%	765	23.4%	783	22.3%
Home Values (2010)						
Home Values \$1,000,000 or More	2	0.3%	9	0.4%	12	0.5%
Home Values \$500,000 to \$999,999	5	0.7%	17	0.8%	19	0.8%
Home Values \$400,000 to \$499,999	4	0.5%	21	0.9%	29	1.2%
Home Values \$300,000 to \$399,999	23	3.3%	83	3.8%	95	3.9%
Home Values \$200,000 to \$299,999	94	13.6%	335	15.2%	394	16.4%
Home Values \$150,000 to \$199,999	118	17.1%	545	24.7%	611	25.4%
Home Values \$100,000 to \$149,999	125	18.1%	358	16.2%	372	15.5%
Home Values \$70,000 to \$99,999	89	12.9%	323	14.6%	332	13.8%
Home Values \$50,000 to \$69,999	55	7.9%	154	7.0%	155	6.4%
Home Values \$25,000 to \$49,999	65	9.3%	182	8.2%	195	8.1%
Home Values Under \$25,000	112	16.2%	181	8.2%	190	7.9%
Owner-Occupied Median Home Value	\$114,407		\$130,910		\$135,322	
Renter-Occupied Median Rent	\$675		\$690		\$688	
Transportation To Work (2010)						
Drive to Work Alone	1,219	81.2%	3,632	84.1%	3,875	84.5%
Drive to Work in Carpool	206	13.7%	437	10.1%	448	9.8%
Travel to Work by Public Transportation	7	0.5%	22	0.5%	23	0.5%
Drive to Work on Motorcycle	1	0.1%	2	-	2	-
Walk or Bicycle to Work	49	3.2%	121	2.8%	128	2.8%
Other Means	1	0.1%	4	0.1%	4	0.1%
Work at Home	18	1.2%	102	2.4%	107	2.3%
Travel Time (2010)						
Travel to Work in 14 Minutes or Less	1,138	76.7%	3,123	74.0%	3,320	74.1%
Travel to Work in 15 to 29 Minutes	146	9.8%	501	11.9%	530	11.8%
Travel to Work in 30 to 59 Minutes	180	12.1%	493	11.7%	517	11.5%
Travel to Work in 60 Minutes or More	20	1.3%	100	2.4%	113	2.5%
Average Minutes Travel to Work	10.7		9.8		9.8	

This report was produced using data from private and government sources deemed to be reliable. The information herein is provided without representation or warranty.