

# COCCA DEVELOPMENT

**RETAIL OR OFFICE SPACE FOR LEASE**

**231 ALLEGHENY BOULEVARD**

BROOKVILLE, PA 15825



- Join Family Dollar & Verizon Wireless; formerly I Medical
- Center is approximately 100 miles northeast of Pittsburgh
- Ideally located on busy Allegheny Boulevard with great visibility

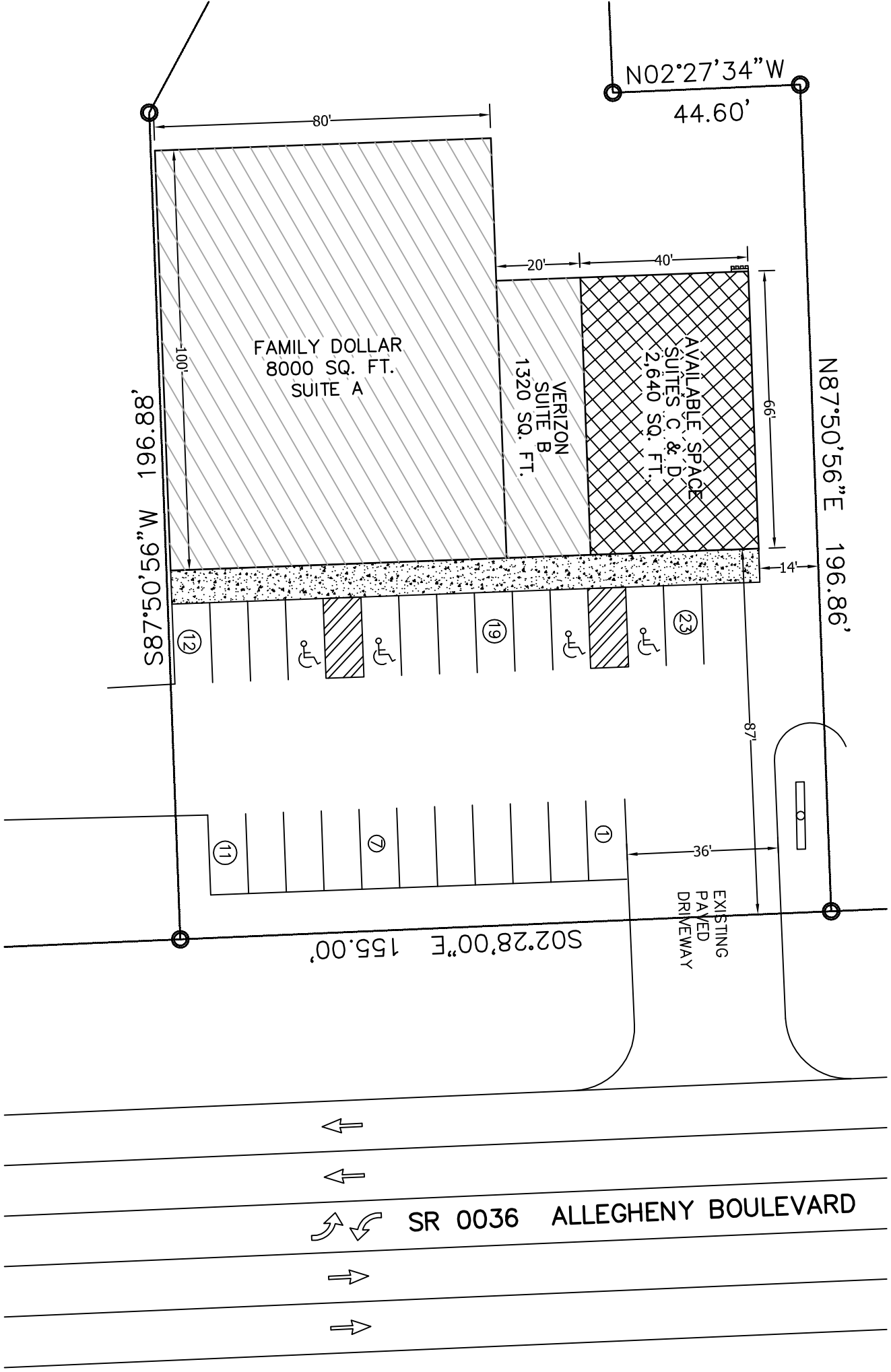
**AVAILABLE SUITE AREA—\$14/square foot (NNN)**

Approximately 2,640 square feet

NNN: Base rent plus prorata share of Real Estate Taxes, Insurance, and Common Area expenses, including but not limited to snow removal, lawn care, and parking lot maintenance. Tenant pays separately metered utilities for gas, electric, water, sewer, & trash removal.

**CALL 330-729-1010 FOR MORE INFORMATION**

**[www.coccadevelopment.com](http://www.coccadevelopment.com)**





Google



DOLLAR GENERAL

BANK

SHETZ



16K



SUBWAY

This map was produced using data from private and government sources deemed to be reliable. The information herein is provided without representation or warranty.

Imagery ©2016 DigitalGlobe, USDA Farm Service Agency

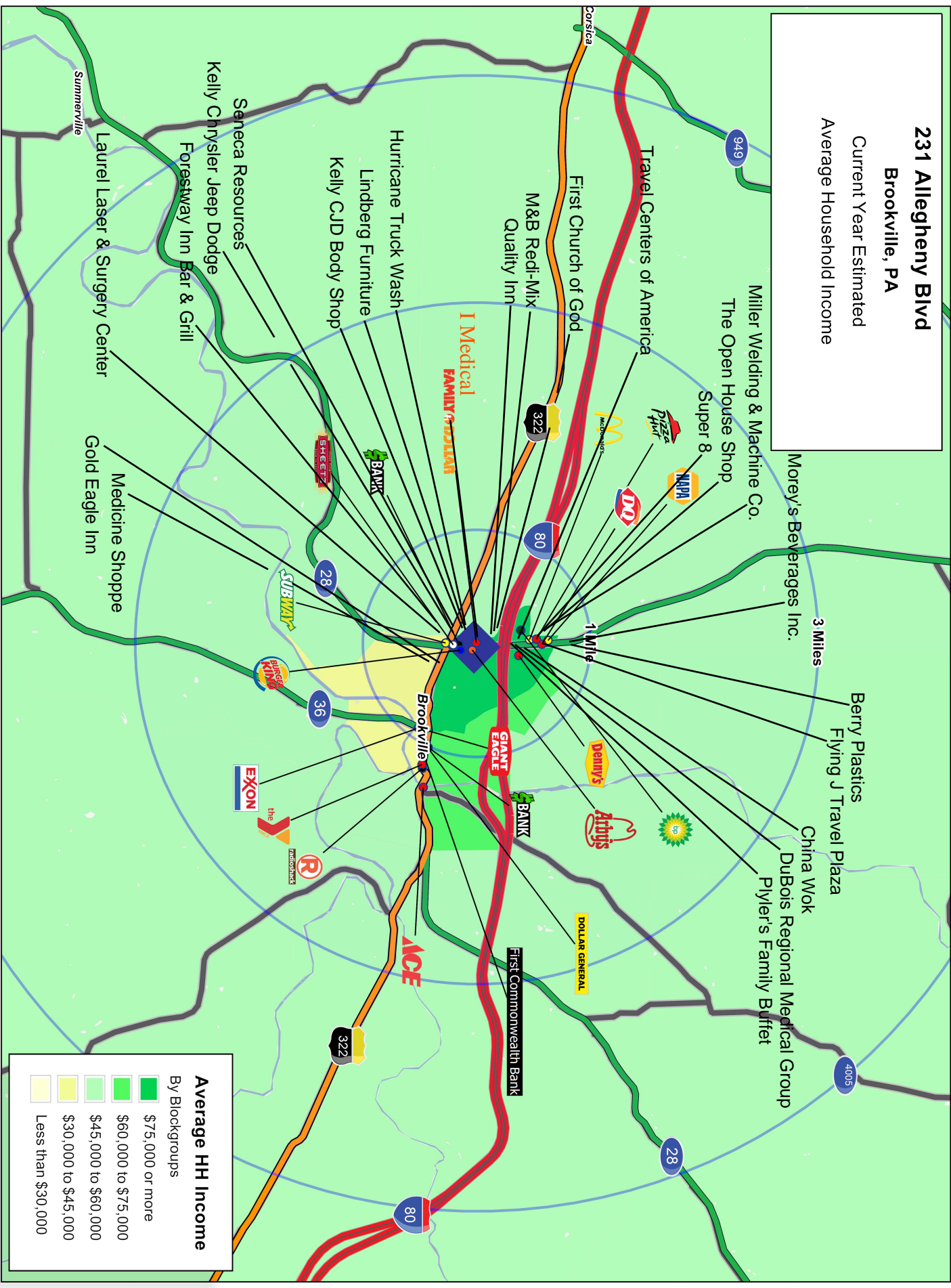
Logos are for identification purposes only and may be trademarks of their respective companies.

Lat: 41.16566 Long: -79.09891 Zoom: 0.55 m

# 231 Allegheny Blvd

Brookville, PA

Current Year Estimated  
Average Household Income

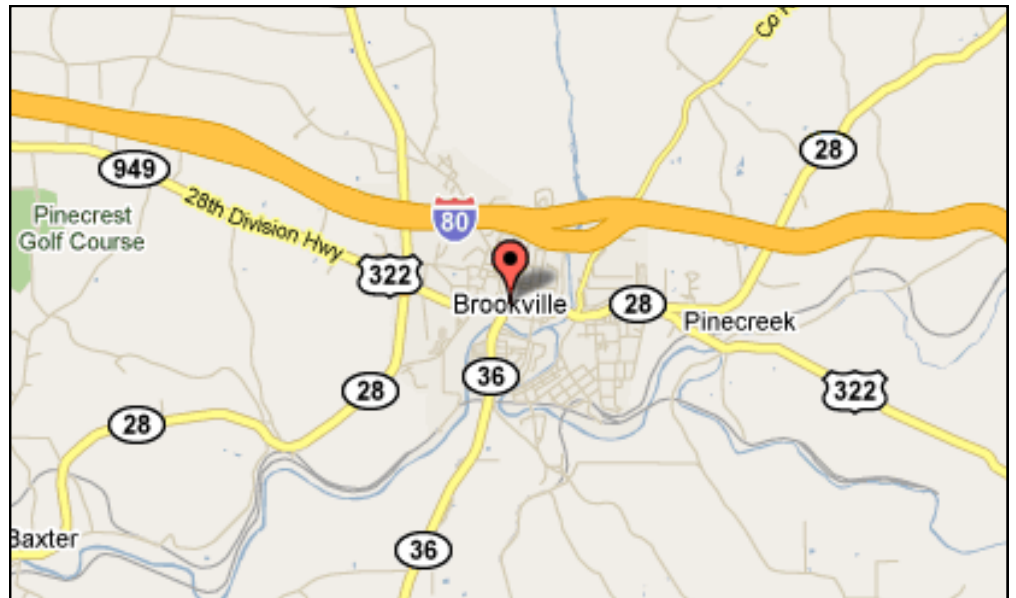


Average HH Income	
By Blockgroups	
<span style="display:inline-block; width:15px; height:15px; background-color:#008000;"></span>	\$75,000 or more
<span style="display:inline-block; width:15px; height:15px; background-color:#00C000;"></span>	\$60,000 to \$75,000
<span style="display:inline-block; width:15px; height:15px; background-color:#90EE90;"></span>	\$45,000 to \$60,000
<span style="display:inline-block; width:15px; height:15px; background-color:#FFFF00;"></span>	\$30,000 to \$45,000
<span style="display:inline-block; width:15px; height:15px; background-color:#FFFACD;"></span>	Less than \$30,000

This map was produced using data from private and government sources deemed to be reliable. The information herein is provided without representation or warranty.

# 231 Allegheny Boulevard Brookville, PA 15825

The site is ideally located 100 miles northeast of Pittsburgh and is in the county seat of Jefferson County. Clarion University, Indiana University and Penn State University campuses can be found in the neighboring



towns of Clarion, Punxsutawney and DuBois, all just a 20 minute drive from Brookville. The larger cities of Erie, Pittsburgh and Altoona can all be reached within one to two hours.

Brookville is the common name for the community and surrounding area while the formal name is the Borough of Brookville. Throughout the year, Brookville hosts several festivals and is the home of the award winning Jefferson County



History Center. The Coolspring Power Museum is just 10 miles south on route 36. Hunting and fishing and other outdoor recreations are popular as well.

# COCCA DEVELOPMENT, LTD

**231 Allegheny Boulevard Brookville, PA 15825**

## **AT A GLANCE**

- Brookville's main source of economic development throughout the 19th century was the lumber industry. Brookville's many streams and its connection to larger rivers (the Clarion and later, the Allegheny) allowed for extensive construction of lumber mills along the watersheds and the floating of timber to markets in Pittsburgh. The town still supports the lumber industry, but coal has given way to natural gas.
- The Brookville Historic District, Brookville Presbyterian Church and Manse, Gray-Taylor House, Joseph E. Hall House, and Phillip Taylor House are listed on the National Register of Historic Places.
- Located on the Allegheny Plateau, Brookville, PA, is surrounded by the lush green forests of Cook Forest and Clear Creek State Parks
- Brookville is the smallest community in the nation that can boast a full service YMCA.

# GRAPHIC PROFILE

2000-2010 Census, 2014 Estimates with 2019 Projections

Calculated using Proportional Block Groups

Lat/Lon: 41.1671/-79.0984

RGRAP3

## 231 Allegheny Blvd

### Brookville, PA

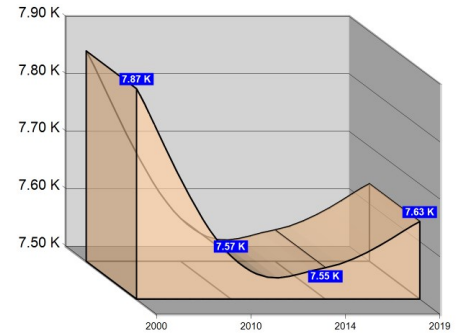
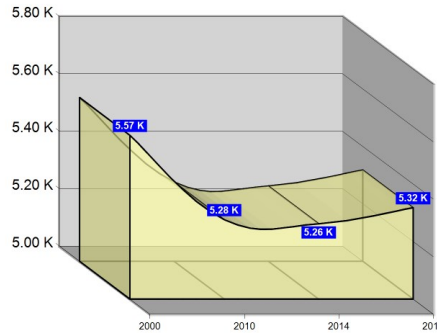
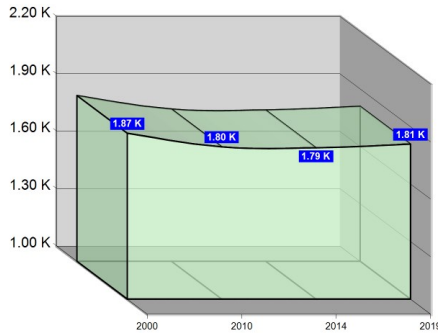
1 Mile

3 Miles

5 Miles

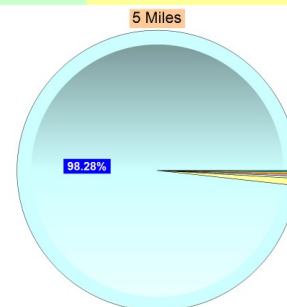
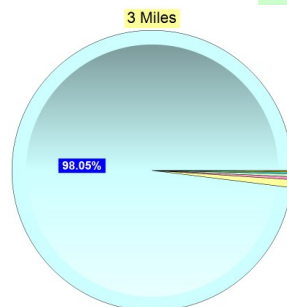
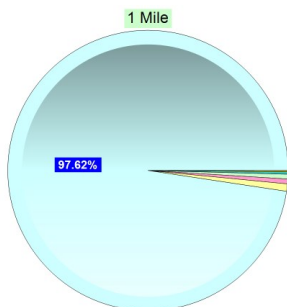
#### Population

Estimated Population (2014)	1,790	5,262	7,555
Projected Population (2019)	1,809	5,318	7,635
Census Population (2010)	1,795	5,276	7,575
Census Population (2000)	1,866	5,570	7,866
Projected Annual Growth (2014-2019)	19 0.2%	56 0.2%	80 0.2%
Historical Annual Growth (2010-2014)	-5 -1.0%	-14 -1.4%	-20 -1.0%
Historical Annual Growth (2000-2010)	-71 -0.4%	-294 -0.5%	-291 -0.4%
Estimated Population Density (2014)	570 psm	186 psm	96 psm
Trade Area Size	3.1 sq mi	28.3 sq mi	78.5 sq mi



#### Race and Ethnicity (2014)

Not Hispanic or Latino Population	1,769 98.8%	5,201 98.8%	7,480 99.0%
White	1,732 97.9%	5,111 98.3%	7,369 98.5%
Black or African American	9 0.5%	16 0.3%	19 0.3%
American Indian or Alaska Native	3 0.1%	7 0.1%	13 0.2%
Asian	10 0.6%	18 0.3%	19 0.3%
Hawaiian or Pacific Islander	- -	1 -	1 -
Other Race	- -	1 -	2 -
Two or More Races	15 0.9%	47 0.9%	57 0.8%
Hispanic or Latino Population	21 1.2%	61 1.2%	75 1.0%
White	15 73.2%	48 78.9%	55 74.0%
Black or African American	1 2.5%	1 1.6%	1 1.3%
American Indian or Alaska Native	- -	1 1.5%	3 4.6%
Asian	- -	- -	- -
Hispanic Hawaiian or Pacific Islander	- -	- -	- -
Other Race	5 24.3%	10 16.9%	11 15.0%
Two or More Races	- -	1 1.0%	4 5.1%



White Black or African American American Indian or Alaska Native Asian Hawaiian or Pacific Islander Other Race 2+ Races

This report was produced using data from private and government sources deemed to be reliable. The information herein is provided without representation or warranty.

# GRAPHIC PROFILE

2000-2010 Census, 2014 Estimates with 2019 Projections

Calculated using Proportional Block Groups

Lat/Lon: 41.1671/-79.0984

RGRAP3

## 231 Allegheny Blvd

### Brookville, PA

1 Mile

3 Miles

5 Miles

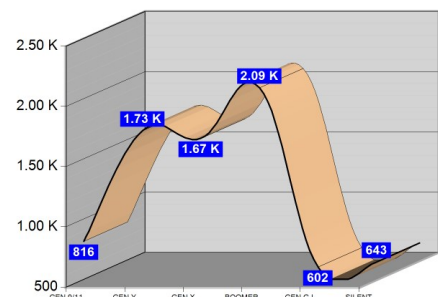
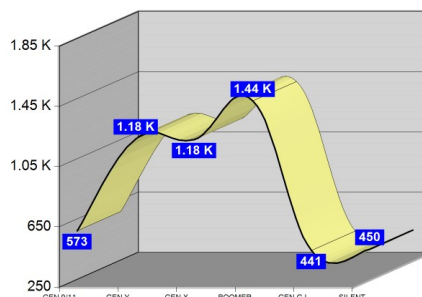
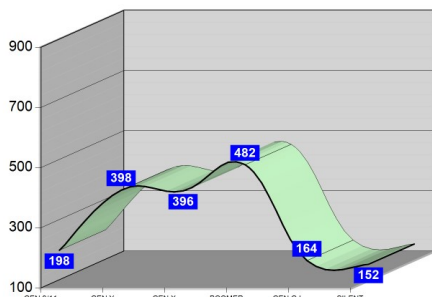
#### Age Distribution (2014)

Age Group	1 Mile	3 Miles	5 Miles
Age Under 5 Years	94 5.3%	289 5.5%	406 5.4%
Age 5 to 9 Years	104 5.8%	284 5.4%	410 5.4%
Age 10 to 14 Years	99 5.5%	271 5.1%	405 5.4%
Age 15 to 19 Years	80 4.5%	270 5.1%	394 5.2%
Age 20 to 24 Years	104 5.8%	296 5.6%	413 5.5%
Age 25 to 29 Years	112 6.3%	342 6.5%	459 6.1%
Age 30 to 34 Years	101 5.7%	303 5.8%	437 5.8%
Age 35 to 39 Years	97 5.4%	269 5.1%	402 5.3%
Age 40 to 44 Years	94 5.2%	289 5.5%	422 5.6%
Age 45 to 49 Years	106 5.9%	322 6.1%	472 6.3%
Age 50 to 54 Years	129 7.2%	397 7.6%	589 7.8%
Age 55 to 59 Years	138 7.7%	406 7.7%	595 7.9%
Age 60 to 64 Years	119 6.6%	348 6.6%	498 6.6%
Age 65 to 69 Years	96 5.4%	284 5.4%	407 5.4%
Age 70 to 74 Years	76 4.2%	229 4.4%	337 4.5%
Age 75 to 79 Years	76 4.3%	221 4.2%	305 4.0%
Age 80 to 84 Years	60 3.4%	187 3.6%	262 3.5%
Age 85 Years or Over	103 5.8%	254 4.8%	340 4.5%
Median Age	44.4	44.3	44.3

#### Generation (2014)

Generation	1 Mile	3 Miles	5 Miles
Generation 9/11 Millennials (Age Under 10 Years)	198 11.1%	573 10.9%	816 10.8%
Gen Y to Echo Boomers (Age 10 to 29 Years)	396 22.1%	1,179 22.4%	1,671 22.1%
Gen Xers (Age 30 to 49 Years)	398 22.2%	1,184 22.5%	1,733 22.9%
Baby Boomers (Age 50 to 69 Years)	482 26.9%	1,435 27.3%	2,090 27.7%
Silent Generation (Age 70 to 79 Years)	152 8.5%	450 8.6%	643 8.5%
G.I. Generation (Age 80 Years or Over)	164 9.1%	441 8.4%	602 8.0%

This report was produced using data from private and government sources deemed to be reliable. The information herein is provided without representation or warranty.





# GRAPHIC PROFILE

2000-2010 Census, 2014 Estimates with 2019 Projections

Calculated using Proportional Block Groups

Lat/Lon: 41.1671/-79.0984

RGRAP3

## 231 Allegheny Blvd Brookville, PA

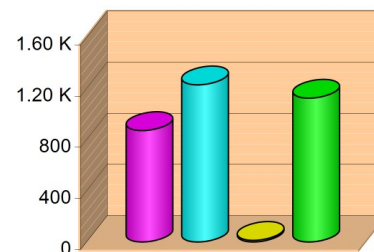
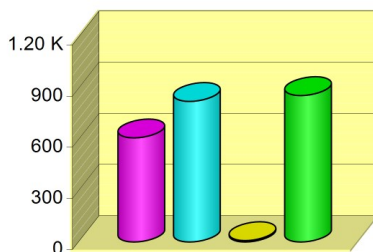
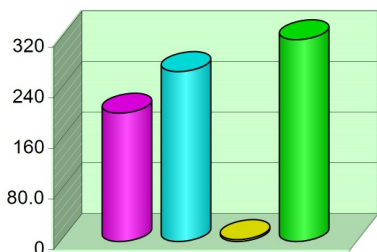
1 Mile

3 Miles

5 Miles

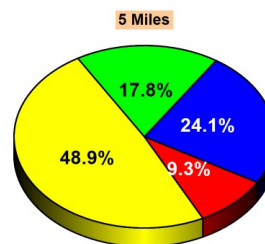
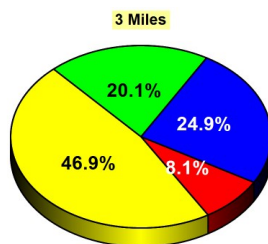
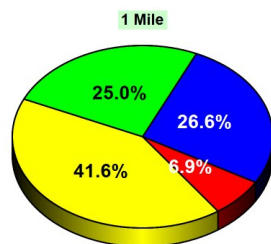
### Household Type (2014)

	1 Mile	3 Miles	5 Miles
Total Households	793	2,303	3,239
Family Households	471 33.9%	1,436 35.8%	2,101 38.0%
Family Households with Children	203 43.0%	611 42.5%	872 41.5%
Family Households No Children	269 57.0%	825 57.5%	1,229 58.5%
Non-Family Households	322 33.9%	868 35.8%	1,138 38.0%
Non-Family Households with Children	3 0.9%	8 1.0%	13 1.1%
Non-Family Households No Children	319 99.1%	859 99.0%	1,125 98.9%



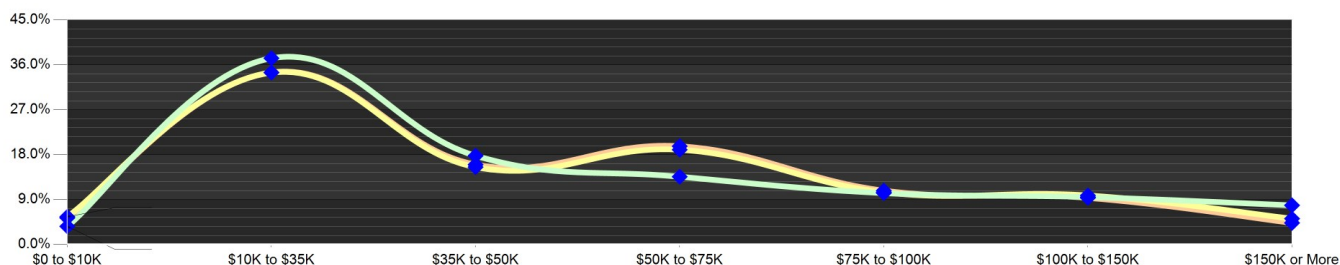
### Education Attainment (2014)

	1 Mile	3 Miles	5 Miles
Elementary or Some High School	85 6.9%	296 8.1%	489 9.3%
High School Graduate	513 41.6%	1,721 46.9%	2,580 48.9%
Some College or Associate Degree	328 26.6%	915 24.9%	1,270 24.1%
Bachelor or Graduate Degree	309 25.0%	737 20.1%	940 17.8%



### Household Income (2014)

	1 Mile	3 Miles	5 Miles
Estimated Average Household Income	\$67,694	\$54,448	\$52,235
Estimated Median Household Income	\$35,196	\$38,215	\$38,630
HH Income Under \$10,000	29 3.6%	128 5.6%	173 5.3%
HH Income \$10,000 to \$34,999	296 37.3%	794 34.5%	1,117 34.5%
HH Income \$35,000 to \$49,999	141 17.8%	357 15.5%	518 16.0%
HH Income \$50,000 to \$74,999	108 13.6%	438 19.0%	638 19.7%
HH Income \$75,000 to \$99,999	75 9.5%	226 9.8%	303 9.3%
HH Income \$100,000 to \$149,999	75 9.5%	226 9.8%	303 9.3%
HH Income \$150,000 or More	62 7.8%	119 5.2%	140 4.3%



This report was produced using data from private and government sources deemed to be reliable. The information herein is provided without representation or warranty.

# EXPANDED PROFILE

2000-2010 Census, 2014 Estimates with 2019 Projections

Calculated using Proportional Block Groups

Lat/Lon: 41.1671/-79.0984

RF5

## 231 Allegheny Blvd

### Brookville, PA

#### Population

	1 Mile	3 Miles	5 Miles
Estimated Population (2014)	1,790	5,262	7,555
Projected Population (2019)	1,809	5,318	7,635
Census Population (2010)	1,795	5,276	7,575
Census Population (2000)	1,866	5,570	7,866
Projected Annual Growth (2014 to 2019)	19 0.2%	56 0.2%	80 0.2%
Historical Annual Growth (2010 to 2014)	-5 -0.1%	-14 -0.1%	-20 -0.1%
Historical Annual Growth (2000 to 2010)	-71 -0.4%	-294 -0.5%	-291 -0.4%
Estimated Population Density (2014)	570 <i>psm</i>	186 <i>psm</i>	96 <i>psm</i>
Trade Area Size	3.14 <i>sq mi</i>	28.26 <i>sq mi</i>	78.49 <i>sq mi</i>

#### Households

Estimated Households (2014)	793	2,303	3,239
Projected Households (2019)	813	2,360	3,319
Census Households (2010)	782	2,271	3,193
Census Households (2000)	836	2,352	3,228
Estimated Households with Children (2014)	206 25.9%	619 26.9%	885 27.3%
Estimated Average Household Size (2014)	2.16	2.20	2.25

#### Average Household Income

Estimated Average Household Income (2014)	\$78,269	\$63,550	\$60,576
Projected Average Household Income (2019)	\$84,333	\$68,655	\$65,419
Estimated Average Family Income (2014)	\$109,112	\$82,987	\$76,616

#### Median Household Income

Estimated Median Household Income (2014)	\$42,219	\$44,910	\$44,590
Projected Median Household Income (2019)	\$45,556	\$48,280	\$48,029
Estimated Median Family Income (2014)	\$66,065	\$61,254	\$58,809

#### Per Capita Income

Estimated Per Capita Income (2014)	\$35,054	\$28,161	\$26,320
Projected Per Capita Income (2019)	\$38,310	\$30,847	\$28,814
Estimated Per Capita income 5 Year Growth	\$3,255 9.3%	\$2,685 9.5%	\$2,494 9.5%
Estimated Average Household Net Worth (2014)	\$334,728	\$314,116	\$310,630

#### Daytime Demos (2014)

Total Businesses	199	450	524
Total Employees	2,383	5,295	5,907
Company Headquarter Businesses	- 0.2%	2 0.4%	2 0.4%
Company Headquarter Employees	55 2.3%	220 4.2%	220 3.7%
Employee Population per Business	12.0	11.8	11.3
Residential Population per Business	9.0	11.7	14.4

This report was produced using data from private and government sources deemed to be reliable. The information herein is provided without representation or warranty.

# EXPANDED PROFILE

2000-2010 Census, 2014 Estimates with 2019 Projections

Calculated using Proportional Block Groups

Lat/Lon: 41.1671/-79.0984

RF5

## 231 Allegheny Blvd

### Brookville, PA

#### Race & Ethnicity

	1 Mile		3 Miles		5 Miles	
White (2014)	1,748	97.6%	5,159	98.1%	7,424	98.3%
Black or African American (2014)	10	0.5%	17	0.3%	20	0.3%
American Indian or Alaska Native (2014)	3	0.1%	8	0.2%	16	0.2%
Asian (2014)	10	0.6%	18	0.3%	19	0.3%
Hawaiian or Pacific Islander (2014)	-	-	1	-	1	-
Other Race (2014)	5	0.3%	12	0.2%	13	0.2%
Two or More Races (2014)	15	0.8%	47	0.9%	61	0.8%
Not Hispanic or Latino Population (2014)	1,769	98.8%	5,201	98.8%	7,480	99.0%
Hispanic or Latino Population (2014)	21	1.2%	61	1.2%	75	1.0%
Not Hispanic or Latino Population (2019)	1,780	98.4%	5,234	98.4%	7,533	98.7%
Hispanic or Latino Population (2019)	29	1.6%	83	1.6%	102	1.3%
Not Hispanic or Latino Population (2010)	1,778	99.1%	5,228	99.1%	7,515	99.2%
Hispanic or Latino Population (2010)	17	0.9%	48	0.9%	59	0.8%
Not Hispanic or Latino Population (2000)	1,858	99.6%	5,548	99.6%	7,840	99.7%
Hispanic or Latino Population (2000)	7	0.4%	22	0.4%	26	0.3%
Projected Hispanic Annual Growth (2014 to 2019)	8	7.7%	23	7.5%	27	7.3%
Historic Hispanic Annual Growth (2000 to 2014)	14	13.0%	39	12.7%	49	13.4%

#### Age Distribution (2014)

	1 Mile		3 Miles		5 Miles	
Age Under 5	94	5.3%	289	5.5%	406	5.4%
Age 5 to 9 Years	104	5.8%	284	5.4%	410	5.4%
Age 10 to 14 Years	99	5.5%	271	5.1%	405	5.4%
Age 15 to 19 Years	80	4.5%	270	5.1%	394	5.2%
Age 20 to 24 Years	104	5.8%	296	5.6%	413	5.5%
Age 25 to 29 Years	112	6.3%	342	6.5%	459	6.1%
Age 30 to 34 Years	101	5.7%	303	5.8%	437	5.8%
Age 35 to 39 Years	97	5.4%	269	5.1%	402	5.3%
Age 40 to 44 Years	94	5.2%	289	5.5%	422	5.6%
Age 45 to 49 Years	106	5.9%	322	6.1%	472	6.3%
Age 50 to 54 Years	129	7.2%	397	7.6%	589	7.8%
Age 55 to 59 Years	138	7.7%	406	7.7%	595	7.9%
Age 60 to 64 Years	119	6.6%	348	6.6%	498	6.6%
Age 65 to 74 Years	172	9.6%	514	9.8%	744	9.9%
Age 75 to 84 Years	136	7.6%	408	7.7%	567	7.5%
Age 85 Years or Over	103	5.8%	254	4.8%	340	4.5%
Median Age	44.4		44.3		44.3	

#### Gender Age Distribution (2014)

	1 Mile		3 Miles		5 Miles	
Female Population	967	54.0%	2,791	53.0%	3,928	52.0%
Age 0 to 19 Years	197	20.3%	549	19.7%	783	19.9%
Age 20 to 64 Years	505	52.2%	1,506	53.9%	2,147	54.7%
Age 65 Years or Over	265	27.4%	736	26.4%	999	25.4%
Female Median Age	46.9		47.1		46.8	
Male Population	823	46.0%	2,471	47.0%	3,626	48.0%
Age 0 to 19 Years	181	22.0%	564	22.8%	832	23.0%
Age 20 to 64 Years	496	60.2%	1,467	59.4%	2,141	59.0%
Age 65 Years or Over	147	17.8%	440	17.8%	653	18.0%
Male Median Age	41.5		40.8		41.3	

This report was produced using data from private and government sources deemed to be reliable. The information herein is provided without representation or warranty.

# EXPANDED PROFILE

2000-2010 Census, 2014 Estimates with 2019 Projections

Calculated using Proportional Block Groups

Lat/Lon: 41.1671/-79.0984

RF5

## 231 Allegheny Blvd

### Brookville, PA

#### Household Income Distribution (2014)

	1 Mile		3 Miles		5 Miles	
HH Income \$200,000 or More	30	3.7%	47	2.0%	56	1.7%
HH Income \$150,000 to \$199,999	33	4.1%	72	3.1%	84	2.6%
HH Income \$100,000 to \$149,999	75	9.5%	226	9.8%	303	9.3%
HH Income \$75,000 to \$99,999	82	10.3%	241	10.5%	350	10.8%
HH Income \$50,000 to \$74,999	108	13.6%	438	19.0%	638	19.7%
HH Income \$35,000 to \$49,999	141	17.8%	357	15.5%	518	16.0%
HH Income \$25,000 to \$34,999	76	9.5%	231	10.0%	354	10.9%
HH Income \$15,000 to \$24,999	167	21.1%	437	19.0%	583	18.0%
HH Income Under \$15,000	82	10.4%	254	11.0%	353	10.9%
HH Income \$35,000 or More	468	59.0%	1,382	60.0%	1,949	60.2%
HH Income \$75,000 or More	219	27.7%	587	25.5%	793	24.5%

#### Housing (2014)

	1 Mile		3 Miles		5 Miles	
Total Housing Units	890		2,571		3,714	
Housing Units Occupied	793	89.2%	2,303	89.6%	3,239	87.2%
Housing Units Owner-Occupied	516	65.0%	1,583	68.7%	2,340	72.2%
Housing Units, Renter-Occupied	277	35.0%	720	31.3%	899	27.8%
Housing Units, Vacant	96	10.8%	267	10.4%	476	12.8%

#### Marital Status (2014)

	1 Mile		3 Miles		5 Miles	
Never Married	489	32.8%	1,316	29.8%	1,766	27.9%
Currently Married	647	43.3%	2,111	47.8%	3,160	49.9%
Separated	40	2.7%	149	3.4%	213	3.4%
Widowed	128	8.5%	383	8.7%	532	8.4%
Divorced	189	12.7%	460	10.4%	662	10.4%

#### Household Type (2014)

	1 Mile		3 Miles		5 Miles	
Population Family	1,295	72.4%	3,963	75.3%	5,833	77.2%
Population Non-Family	421	23.5%	1,109	21.1%	1,460	19.3%
Population Group Quarters	74	4.1%	189	3.6%	261	3.5%
Family Households	471	59.4%	1,436	62.3%	2,101	64.9%
Non-Family Households	322	40.6%	868	37.7%	1,138	35.1%
Married Couple with Children	138	21.4%	411	19.5%	602	19.1%
Average Family Household Size	2.7		2.8		2.8	

#### Household Size (2014)

	1 Mile		3 Miles		5 Miles	
1 Person Households	271	34.2%	743	32.3%	976	30.1%
2 Person Households	278	35.1%	821	35.6%	1,184	36.5%
3 Person Households	116	14.6%	366	15.9%	520	16.0%
4 Person Households	85	10.7%	245	10.6%	366	11.3%
5 Person Households	33	4.2%	94	4.1%	140	4.3%
6 or More Person Households	10	1.3%	35	1.5%	53	1.6%

#### Household Vehicles (2014)

	1 Mile		3 Miles		5 Miles	
Households with 0 Vehicles Available	66	8.3%	189	8.2%	241	7.4%
Households with 1 Vehicles Available	350	44.1%	891	38.7%	1,201	37.1%
Households with 2 or More Vehicles Available	378	47.7%	1,224	53.1%	1,797	55.5%
Total Vehicles Available	1,289		3,774		5,490	
Average Vehicles Per Household	1.6		1.6		1.7	

This report was produced using data from private and government sources deemed to be reliable. The information herein is provided without representation or warranty.

# EXPANDED PROFILE

2000-2010 Census, 2014 Estimates with 2019 Projections

Calculated using Proportional Block Groups

Lat/Lon: 41.1671/-79.0984

RF5

## 231 Allegheny Blvd

### Brookville, PA

#### Labor Force (2014)

	1 Mile	3 Miles	5 Miles
Estimated Labor Population Age 16 Years or Over	1,401	4,179	6,000
Estimated Civilian Employed	818 58.4%	2,404 57.5%	3,406 56.8%
Estimated Civilian Unemployed	35 2.5%	140 3.4%	211 3.5%
Estimated in Armed Forces	4 0.3%	6 0.1%	7 0.1%
Estimated Not in Labor Force	545 38.9%	1,629 39.0%	2,376 39.6%
Unemployment Rate	2.5%	3.4%	3.5%

#### Occupation (2010)

	1 Mile	3 Miles	5 Miles
Occupation: Population Age 16 Years or Over	851	2,571	3,627
Management, Business, Financial Operations	86 10.1%	206 8.0%	284 7.8%
Professional, Related	183 21.5%	517 20.1%	680 18.7%
Service	185 21.8%	551 21.4%	773 21.3%
Sales, Office	140 16.5%	565 22.0%	762 21.0%
Farming, Fishing, Forestry	15 1.8%	29 1.1%	35 1.0%
Construct, Extraction, Maintenance	87 10.2%	247 9.6%	379 10.4%
Production, Transport Material Moving	154 18.2%	457 17.8%	714 19.7%
White Collar Workers	409 48.0%	1,288 50.1%	1,726 47.6%
Blue Collar Workers	442 52.0%	1,284 49.9%	1,901 52.4%

#### Consumer Expenditure (2014)

	1 Mile	3 Miles	5 Miles
Total Household Expenditure	\$46.9 M	\$118 M	\$161 M
Total Non-Retail Expenditure	\$26.8 M 57.2%	\$67.5 M 57.2%	\$91.9 M 57.2%
Total Retail Expenditure	\$20.0 M 42.8%	\$50.4 M 42.8%	\$68.7 M 42.8%
Apparel	\$2.23 M 4.8%	\$5.61 M 4.8%	\$7.63 M 4.8%
Contributions	\$1.78 M 3.8%	\$4.30 M 3.6%	\$5.77 M 3.6%
Education	\$1.11 M 2.4%	\$2.70 M 2.3%	\$3.60 M 2.2%
Entertainment	\$2.61 M 5.6%	\$6.55 M 5.6%	\$8.92 M 5.6%
Food and Beverages	\$7.19 M 15.3%	\$18.2 M 15.5%	\$24.9 M 15.5%
Furnishings and Equipment	\$2.02 M 4.3%	\$5.06 M 4.3%	\$6.88 M 4.3%
Gifts	\$1.26 M 2.7%	\$3.08 M 2.6%	\$4.15 M 2.6%
Health Care	\$2.95 M 6.3%	\$7.47 M 6.3%	\$10.2 M 6.4%
Household Operations	\$1.68 M 3.6%	\$4.12 M 3.5%	\$5.56 M 3.5%
Miscellaneous Expenses	\$791 K 1.7%	\$2.01 M 1.7%	\$2.74 M 1.7%
Personal Care	\$680 K 1.5%	\$1.71 M 1.5%	\$2.33 M 1.5%
Personal Insurance	\$483 K 1.0%	\$1.18 M 1.0%	\$1.59 M 1.0%
Reading	\$155 K 0.3%	\$390 K 0.3%	\$529 K 0.3%
Shelter	\$9.05 M 19.3%	\$22.7 M 19.3%	\$30.9 M 19.3%
Tobacco	\$317 K 0.7%	\$813 K 0.7%	\$1.12 M 0.7%
Transportation	\$9.23 M 19.7%	\$23.5 M 20.0%	\$32.2 M 20.1%
Utilities	\$3.32 M 7.1%	\$8.42 M 7.1%	\$11.5 M 7.2%

#### Educational Attainment (2014)

	1 Mile	3 Miles	5 Miles
Adult Population Age 25 Years or Over	1,234	3,669	5,279
Elementary (Grade Level 0 to 8)	20 1.6%	85 2.3%	140 2.7%
Some High School (Grade Level 9 to 11)	65 5.2%	210 5.7%	349 6.6%
High School Graduate	513 41.6%	1,721 46.9%	2,580 48.9%
Some College	243 19.7%	618 16.8%	833 15.8%
Associate Degree Only	85 6.9%	298 8.1%	438 8.3%
Bachelor Degree Only	167 13.5%	440 12.0%	585 11.1%
Graduate Degree	142 11.5%	297 8.1%	355 6.7%

This report was produced using data from private and government sources deemed to be reliable. The information herein is provided without representation or warranty.

# EXPANDED PROFILE

2000-2010 Census, 2014 Estimates with 2019 Projections

Calculated using Proportional Block Groups

Lat/Lon: 41.1671/-79.0984

RF5

231 Allegheny Blvd Brookville, PA	1 Mile		3 Miles		5 Miles	
<b>Units In Structure (2010)</b>						
1 Detached Unit	519	66.3%	1,578	69.5%	2,296	71.9%
1 Attached Unit	31	4.0%	85	3.8%	123	3.9%
2 to 4 Units	143	18.3%	266	11.7%	304	9.5%
5 to 9 Units	25	3.2%	62	2.7%	77	2.4%
10 to 19 Units	16	2.0%	31	1.4%	32	1.0%
20 to 49 Units	25	3.2%	27	1.2%	27	0.8%
50 or More Units	9	1.1%	82	3.6%	84	2.6%
Mobile Home or Trailer	15	1.9%	139	6.1%	249	7.8%
Other Structure	-	-	-	-	-	-
<b>Homes Built By Year (2010)</b>						
Homes Built 2005 or later	33	4.2%	84	3.7%	113	3.6%
Homes Built 2000 to 2004	45	5.8%	100	4.4%	137	4.3%
Homes Built 1990 to 1999	47	6.0%	194	8.5%	267	8.3%
Homes Built 1980 to 1989	45	5.7%	152	6.7%	253	7.9%
Homes Built 1970 to 1979	112	14.3%	339	14.9%	453	14.2%
Homes Built 1960 to 1969	47	6.0%	135	5.9%	198	6.2%
Homes Built 1950 to 1959	103	13.2%	305	13.4%	406	12.7%
Homes Built Before 1949	351	44.9%	961	42.3%	1,365	42.8%
<b>Home Values (2010)</b>						
Home Values \$1,000,000 or More	1	0.2%	5	0.3%	8	0.4%
Home Values \$500,000 to \$999,999	11	2.3%	29	1.8%	38	1.7%
Home Values \$400,000 to \$499,999	24	4.8%	34	2.2%	42	1.8%
Home Values \$300,000 to \$399,999	10	1.9%	32	2.0%	54	2.3%
Home Values \$200,000 to \$299,999	31	6.1%	120	7.7%	201	8.7%
Home Values \$150,000 to \$199,999	67	13.1%	190	12.2%	277	12.0%
Home Values \$100,000 to \$149,999	141	27.7%	350	22.5%	465	20.2%
Home Values \$70,000 to \$99,999	103	20.3%	385	24.7%	553	24.0%
Home Values \$50,000 to \$69,999	61	11.9%	186	11.9%	298	12.9%
Home Values \$25,000 to \$49,999	51	10.1%	164	10.5%	269	11.7%
Home Values Under \$25,000	8	1.6%	67	4.3%	99	4.3%
Owner-Occupied Median Home Value	\$104,533		\$97,726		\$95,292	
Renter-Occupied Median Rent	\$356		\$370		\$375	
<b>Transportation To Work (2010)</b>						
Drive to Work Alone	769	89.7%	2,308	90.1%	3,220	89.5%
Drive to Work in Carpool	45	5.2%	135	5.3%	196	5.4%
Travel to Work by Public Transportation	1	0.1%	4	0.2%	7	0.2%
Drive to Work on Motorcycle	-	-	2	0.1%	2	0.1%
Walk or Bicycle to Work	30	3.5%	55	2.2%	75	2.1%
Other Means	1	0.1%	6	0.2%	13	0.4%
Work at Home	12	1.4%	52	2.0%	84	2.3%
<b>Travel Time (2010)</b>						
Travel to Work in 14 Minutes or Less	547	64.6%	1,562	62.2%	1,992	56.7%
Travel to Work in 15 to 29 Minutes	122	14.4%	493	19.6%	880	25.1%
Travel to Work in 30 to 59 Minutes	144	17.1%	369	14.7%	517	14.7%
Travel to Work in 60 Minutes or More	33	3.9%	88	3.5%	125	3.6%
Average Minutes Travel to Work	10.4		10.9		12.3	

This report was produced using data from private and government sources deemed to be reliable. The information herein is provided without representation or warranty.